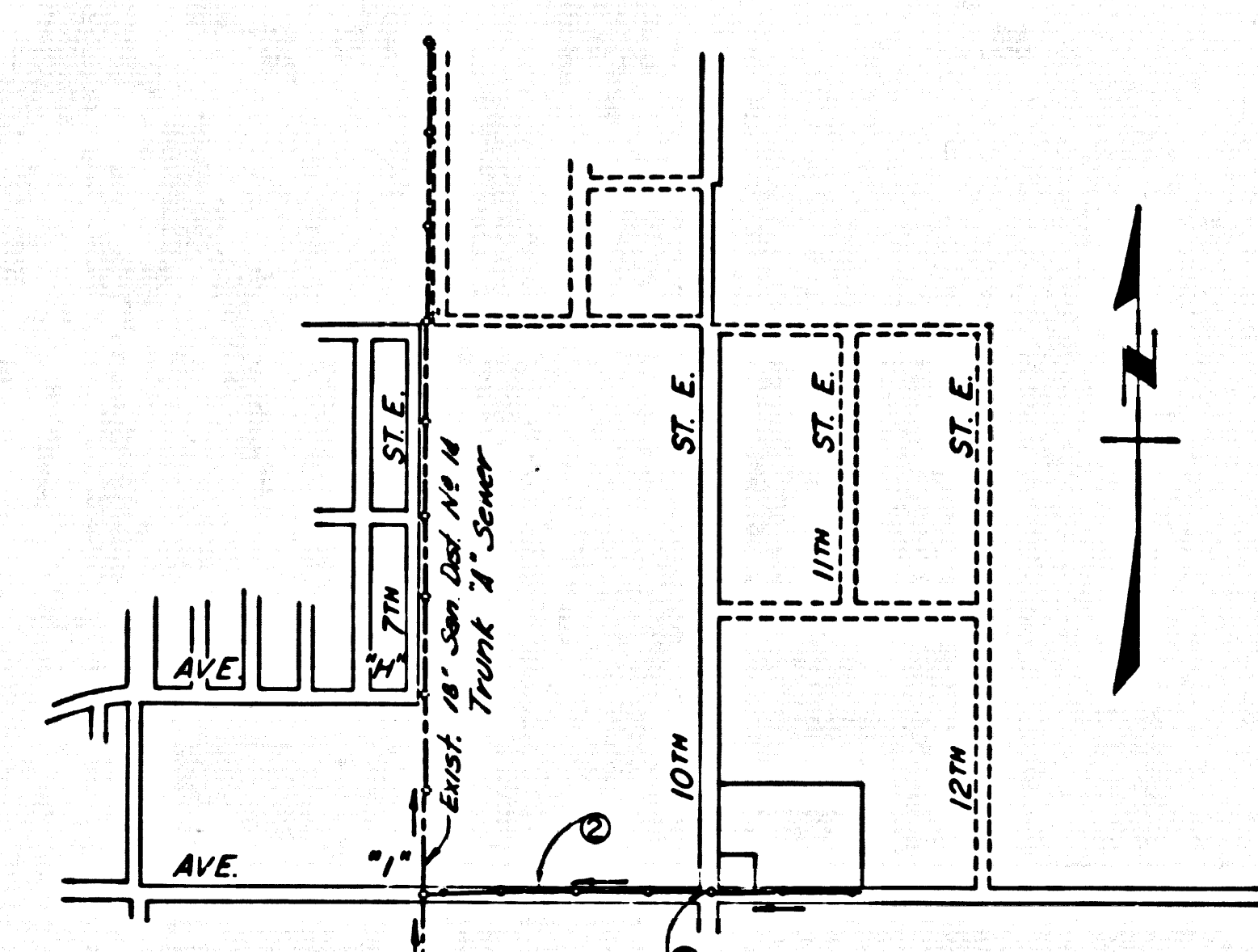


B.M. 84-58 ELEV. 2360.92  
 U.S.C. & G.S. Brass Cap in concrete post  
 8" up 48" N. 83.36' E. of C.V. Line  
 Int. Ave. 1' 8" 10' M.S.T. E. Marked (2015, 1941)  
 LANCASTER QUAD. 19 62



INDEX MAP  
 Scale: 1" = 800'  
 P.C. 8834

GENERAL NOTES:

1. EXISTING AND NEW SANITARY SEWERS SHALL BE CONSTRUCTED IN ACCORDANCE WITH THE STANDARD SPECIFICATIONS FOR PUBLIC WORKS CONSTRUCTION (P.W.C.) WITH THE SUPPLEMENT AND COUNTY ENGINEER SPECIAL PROVISIONS FOR THE CONSTRUCTION OF SANITARY SEWERS DATED APRIL 22, 1972 AND SHALL BE PROTECTED ONLY BY THE PROVISIONS OF THE COUNTY ENGINEER.
2. THE CONTRACTOR SHALL NOTIFY THE COUNTY ENGINEER OF THE PROPOSED WORK, INCLUDING A PLAN, AT LEAST TWENTY (20) DAYS PRIOR TO THE COMMENCEMENT OF WORK UNDER THIS CONTRACT.
3. HOUSE LATERALS TO BE CONSTRUCTED WITH INVERTS AT PROPERTY LINE AND A FEET BELOW CURB GRADE EXCEPT AS NOTED.
4. WYE OR TEE MANHOLES MAY BE USED FOR CONNECTIONS TO MAINLINE SEWERS EXCEPT AS NOTED.
5. ALL STRUCTURES SHALL BE BUILT WITH MANHOLES PER 8.0 ON PRECAST CONCRETE MANHOLES PER 8.0, EXCEPT AS NOTED.
6. POWER STAKES ON THE PROPERTY LINE OR PROPERTY LINES PROTECTED AT RIGHT ANGLES TO THE SEWER LINE AT THE CENTER LINE OF EACH MANHOLE.
7. MANHOLES SHALL BE UNBARRICADED UNLESS OTHERWISE SPECIFIED.
8. VENTING CAPS AND JOINTS SHALL BE TYPE "C" OR "D" PER STANDARD SPECIFICATIONS SECTION 805-2.
9. IF A POWER POLE IS WITHIN THREE FEET OF THE SEWER, THE SEWER SHALL BE BARRICADED PER 8.0, CASE B, TWO FEET ON EACH SIDE FROM THE POINT OF INTERFERENCE.
10. IF DURING THE COURSE OF CONSTRUCTION IT IS DETERMINED THAT THERE IS LESS THAN FOUR FEET OF COVER OVER THE TOP OF A MAIN LINE OR HOUSE LATERAL V.C.P. SEWER WHICH IS NOT INDICATED ON THE PLAN, THE PIPE SHALL BE BARRICADED PER 8.0, CASE B UNLESS OTHERWISE SPECIFIED BY THE COUNTY ENGINEER.
11. ALL JOINTS BETWEEN CAST IRON PIPE AND VITRIFIED CLAY PIPE SHALL BE MADE WITH A RUBBER GUYE JOINT, TYPE "C" OR "D", FIFTH EDITION IF NECESSARY PER STANDARD SPECIFICATIONS, SECTION 805-2.
12. BEFORE TO BE OPENED FOR REPAIRS THE SECTION 805-2.2 OF THE STANDARD SPECIFICATIONS AND SPECIAL PROVISIONS.
13. RESURFACE ALL TRENCHES WITHIN PAVED AREAS TO MEET L.A. COUNTY ROAD DEPT. OR CALIFORNIA STATE HIGHWAY REQUIREMENTS IN ACCORDANCE WITH PERMITS.

CONSTRUCTED IN  
**AVENUE "I" EAST, LANCASTER  
 ALPHA BETA**

PRIVATE CONTRACT NO. 8834

W.S. 70  
 2 SHEETS; 3 PAGES  
 SCALE: HORIZ. 1" = 40' VERT. 1" = 4'  
 AUGUST, 1972  
 PREPARED IN THE OFFICES OF  
 MASON, VANCUREN & WACHOB  
 CIVIL ENGINEERS & SURVEYORS  
 2200 F STREET, BAKERSFIELD, CALIF. 93301  
 BY: *M. J. ...*  
 REG. C. E. No. 14729

THE FOLLOWING LATEST REVISED STANDARD PLANS ON FILE IN THE OFFICE OF THE COUNTY ENGINEER SHALL APPLY IN THE CONSTRUCTION OF THIS PROJECT.

LEADERS	8-1
MINIMUM PUBLIC SAFETY REQUIREMENTS	8-2
BRICK MANHOLE	8-3
STANDARD MANHOLE STEP	8-17
REBARRED FOR SEWER PIPE	8-20
CHANGES AND REVISIONS	8-22
WYE OR TEE SUPPORT	8-26
ALUMINUM FINNED FRONTS	8-28
LOCKING MANHOLE FRAME AND COVER	8-28
NON-BARRICADED PRECAST CONCRETE MANHOLE	8-28

COUNTY OF LOS ANGELES, CALIFORNIA  
 HARVEY T. BRANDT, COUNTY ENGINEER JOHN D. PARKHURST, CHIEF ENGINEER  
 APPROVED: *[Signature]* 11/6/72 REGIONAL ENGINEER DATE APPROVED: *[Signature]* OFFICE ENGINEER  
 CHECKED: *R. L. Kopychuk* 11/6/72 DATE  
 REG. C. E. No. 16712  
 LANCASTER - BLDG DIST. 80 1 N 0371 60

