

B.M. 22" R.O.L.S. 0021 ELEV. 89.55
 S.W. Cor. of Compton Ave.
 & 120th St.
 L. & B. 131' N10 WCR
 WATTS QUAD. 1965

CASH CONTRACT No 8443

PROFILE, ALIGNMENT AND GRADE OF
 SANITARY SEWERS
 TO BE CONSTRUCTED IN

120th STREET (REALIGNED)
 AND OTHER RIGHTS OF WAY

2 SHEETS, 4 PAGES

13139

SCALE: VERT. 1" = 4'
 HORIZ. 1" = 40'

APRIL 1970

COUNTY OF LOS ANGELES, CALIFORNIA

JOHN A. LAMBIE

COUNTY ENGINEER

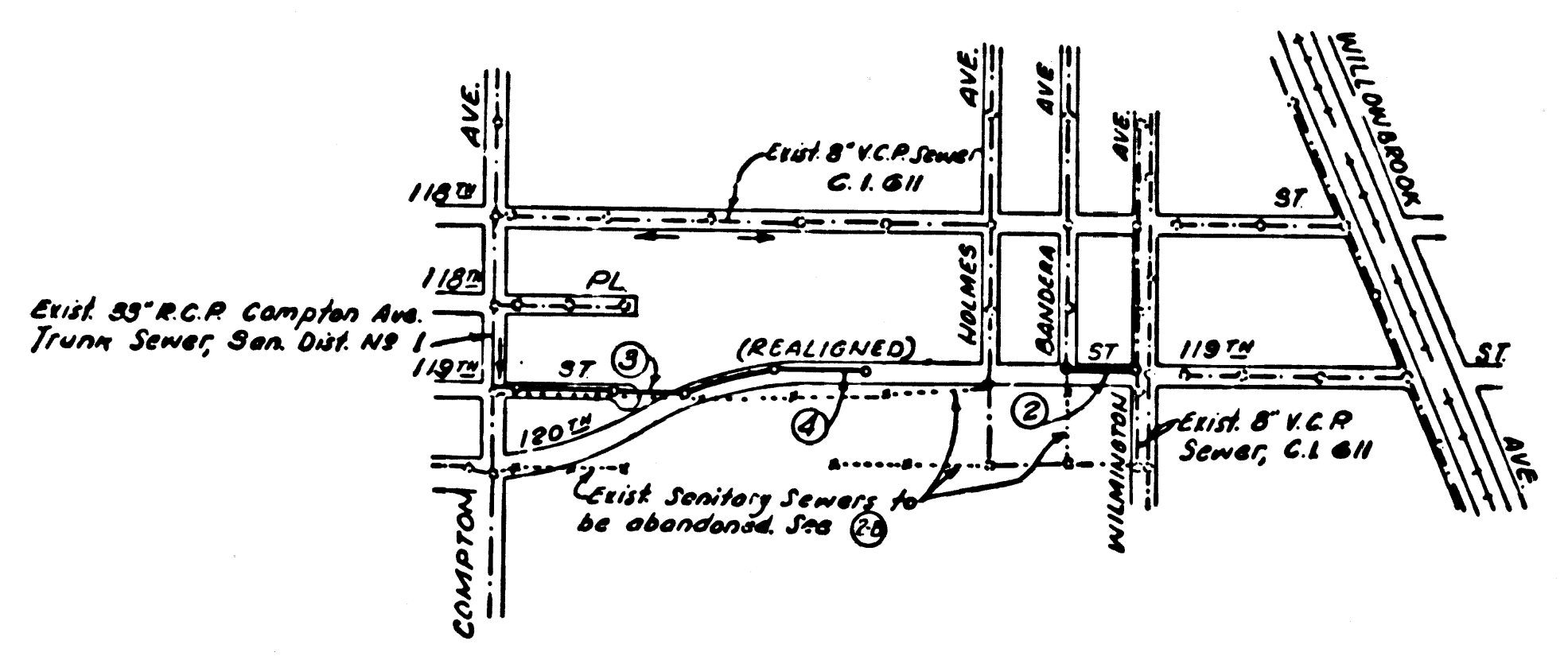
APPROVED BY *[Signature]*
 SANITATION DISTRICT ENGINEER

J. D. PARKHURST
 COUNTY ENGINEER OF COUNTY
 SANITATION DISTRICT NO. 7

DESIGNED BY *[Signature]*
 SEC. C. E. NO. 10475 8-7-70

NOTES:
 1. WORK SHALL BE CONSTRUCTED ACCORDING TO STANDARD SPECIFICATIONS FOR PUBLIC WORKS
 COUNTY OF LOS ANGELES (1970 EDITION WITH 1971 AMENDMENTS) AND COUNTY ENGINEER SPECIFICATIONS FOR THE CONSTRUCTION
 OF SANITARY SEWERS DATED APRIL 5, 1970 AND SHALL BE PARALLELED ONLY IN THE PRESENCE OF THE COUNTY ENGINEER.
 2. GRADES TO WHICH THE IMPROVEMENT IS TO BE CONSTRUCTED ARE SHOWN ON PLANS AND PROFILE GRADE POINTS FOR TOP
 OF CURB. CENTER LINE OF STREET OR CENTER LINE OF ALLEY ARE SHOWN BY CIRCLES ON PROFILES AT ALL POINTS BETWEEN BEING
 HATED POINTS THE GRADE SHALL BE ESTABLISHED AS TO CONFORM TO A STRAIGHT LINE BETWEEN SAID DESIGNATED
 POINTS.
 3. REVISIONS ARE IN PENCIL ABOVE S.F.C. & S.E. (SEE DATE) OF THIS
 4. UNIT PRICES FOR ADDITIONAL WORK WHICH MAY BE REQUIRED BUT WHICH CANNOT BE ASCERTAINED IN ADVANCE, SHALL BE
 DETERMINED BY THE PROPOSAL.
 5. THIS DRAWING AND THE DATA HEREON ARE HEREBY MADE A PART OF THE SPECIFICATIONS.

LAYOUT	10/28/69	APRIL 1970	UNDERGROUND	
TRACED	10/28/69	APRIL 1970	BENCH MARKS	
CHECKED	1/14/70	APRIL 1970	MAINTENANCE	
F. B. R.O.L.S. 0021			INSPECTOR	
A. B.		W.S. 28	RECORD PLANS	



INDEX MAP
 120th ST. (REALIGNED)
 C.C. 8443
 SCALE: 1" = 600'

Note: Number in circles indicates page numbers.
 Exist. mainline sewers and manholes to be
 abandoned shown thus *[Symbol]*

NOTICE TO CONTRACTOR

THE EXISTENCE AND LOCATION OF ANY UNDERGROUND
 UTILITY, TRENCH OR STRUCTURE SHOWN ON THESE PLANS WAS
 OBTAINED BY A SEARCH OF THE AVAILABLE RECORDS, TO THE BEST
 OF OUR KNOWLEDGE THERE ARE NO EXISTING UTILITIES LOCATED
 AS NOTED ON THIS MAP.
 THE CONTRACTOR IS REQUIRED TO TAKE PRECAUTIONARY
 MEASURES TO PROTECT THE UTILITIES, TRENCHES AND
 ANY OTHER LINES NOT OF RECORD OR NOT SHOWN
 ON THESE PLANS.

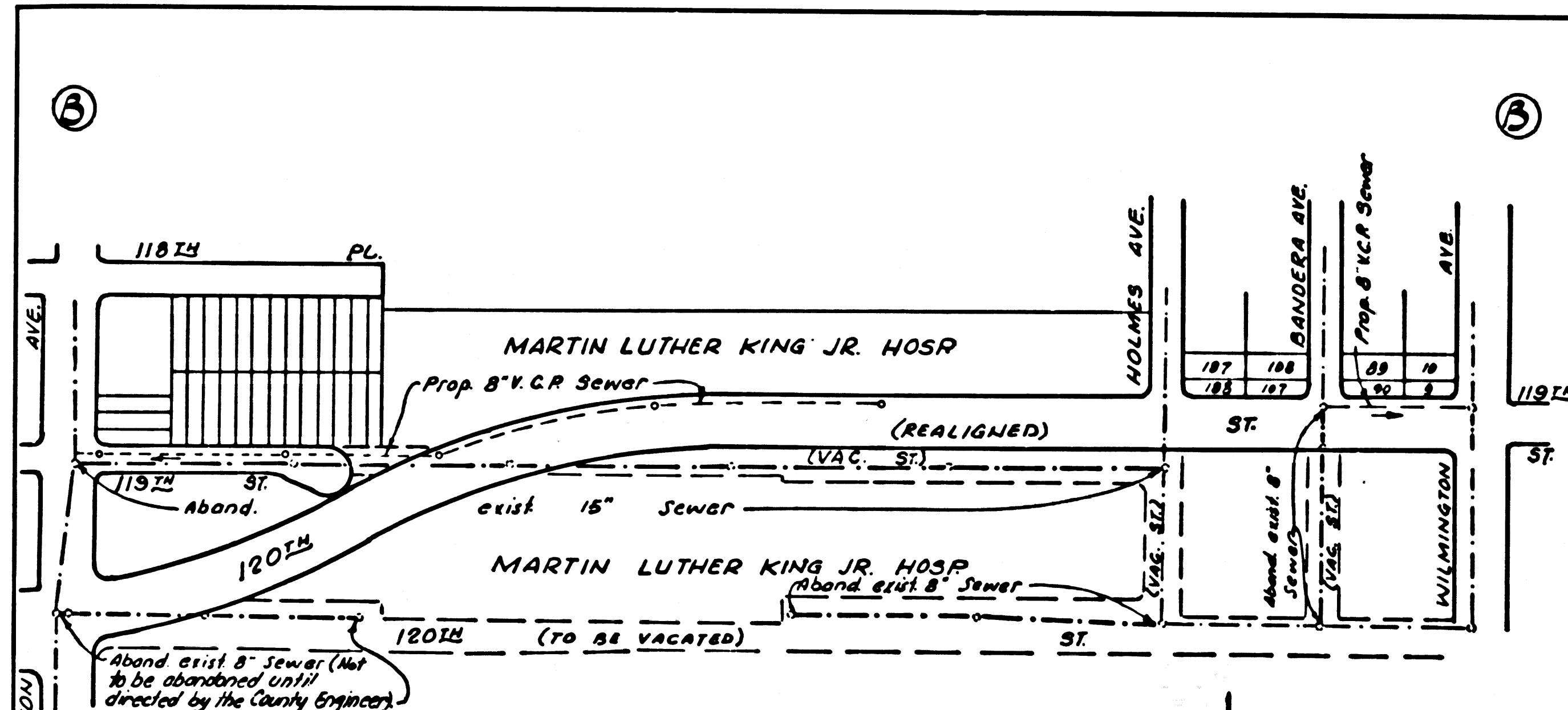
NO CHARGE FOR
 CONNECTIONS
 ROY ANDERSON

USE EXTRA STRENGTH PIPE. ALL PIPE IS STANDARD WEIGHT.
 VITRIFIED CLAY PIPE JOINTS SHALL BE TYPE "D"; 8" & 10" PER SEC. 306-2 OF STANDARD SPEC.
 ALL STRUCTURES SHALL BE EITHER BRICK PER S.F.C. OR PRECAST CONCRETE PER S-36.
 USE STANDARD MANHOLE FRAMES AND COVERS, EXCEPT AS NOTED.
 SEWERS TO BE TESTED AND LEAKAGE PER S.F.C. 306-2 & 3 OF THE STANDARD SPEC. AND SPEC. PROVISIONS.
 CONTRACTOR SHALL LATERALS WITH INVERTS AT PROPERTY LINE & FEET BELOW CURB GRADE, OR GRADE OF CENTER LINE OF STREET,
 EXCEPT AS NOTED.
 7" & 8" BRANCHES MAY BE USED FOR CONNECTIONS TO MAIN LINE SEWER.
 PROFILES OF CURBS AT SIDES OF HOUSE LATERALS INDICATE TYPE SHALL BE Laid HORIZONTAL AND HOUSE LATERALS SHALL BE CON-
 STRUCTED WITH 1/2" DIA. FOR HOOD TO PROPERTY LINE.
 ALL HOUSE LATERALS SHALL BE CONSTRUCTED IN A STRAIGHT ALIGNMENT AT RIGHT ANGLES FROM THE MAIN LINE SEWER EXCEPT AS
 SHOWN ON THE PLANS.
 THE CONTRACTOR SHALL NOTIFY THE CONSTRUCTION DIVISION BY TELEPHONE HOURS 9:00 A.M. TO 5:00 P.M. AT LEAST 24 HOURS BEFORE
 STARTING ANY WORK UNDER THIS CONTRACT.
 NO REVISIONS SHALL BE MADE IN THESE PLANS WITHOUT THE APPROVAL OF THE COUNTY ENGINEER.
 REFER TO SECTION 7-10.1.1 OF THE STANDARD SPEC. REGARDING SAFETY ORDERS.
 REVISIONS SHOULD BE MADE WITHIN 100' AREA WITH TYPE 3 GRANULAR CONCRETE 3" MINIMUM IN
 THICKNESS BY 4" MINIMUM OF REBARRETE BASE MATERIALS, EXCEPT AS NOTED.
 STREET REVISIONS METHODS SHALL BE IN ACCORDANCE WITH SEC. 306-1.1.1.9 OF THE SPEC. PROVISIONS.
 THE REVISIONED AREA SHALL BE REBARRED WITH #2 CHAIRS AND 3" COARSE SAND.
 PRIOR TO CONSTRUCTION, THE CONTRACTOR SHALL SECURE A PERMIT FROM THE COUNTY ROAD DEPARTMENT, 1125 S. GARFIELD AVE., SOUTH GATE.
 ALL CONCRETE CROSS CURBS, CURBS, GUTTERS, PAVEMENT, AND SIDEWALKS SHALL BE TURNED ON ACCESS FOR SIDE WALKS
 COUNTY ROAD DEPARTMENT.
 THE FOLLOWING LATEST REVISED STANDARD PLANS ON FILE IN THE OFFICE OF COUNTY ENGINEER SHALL APPLY IN THE CONSTRUCTION
 OF THIS PROJECT:

PAGE NO.	STREET	STATION LIMITS	TYPE OF REVISIONS
1	PRELIMINARY PLANS	1+00 TO 1+80	TYPE 2, 5" A.C. ON 10" APPROXIMATE BASE MATERIALS
2	COMPTON AVE.	1+80 TO 1+85	

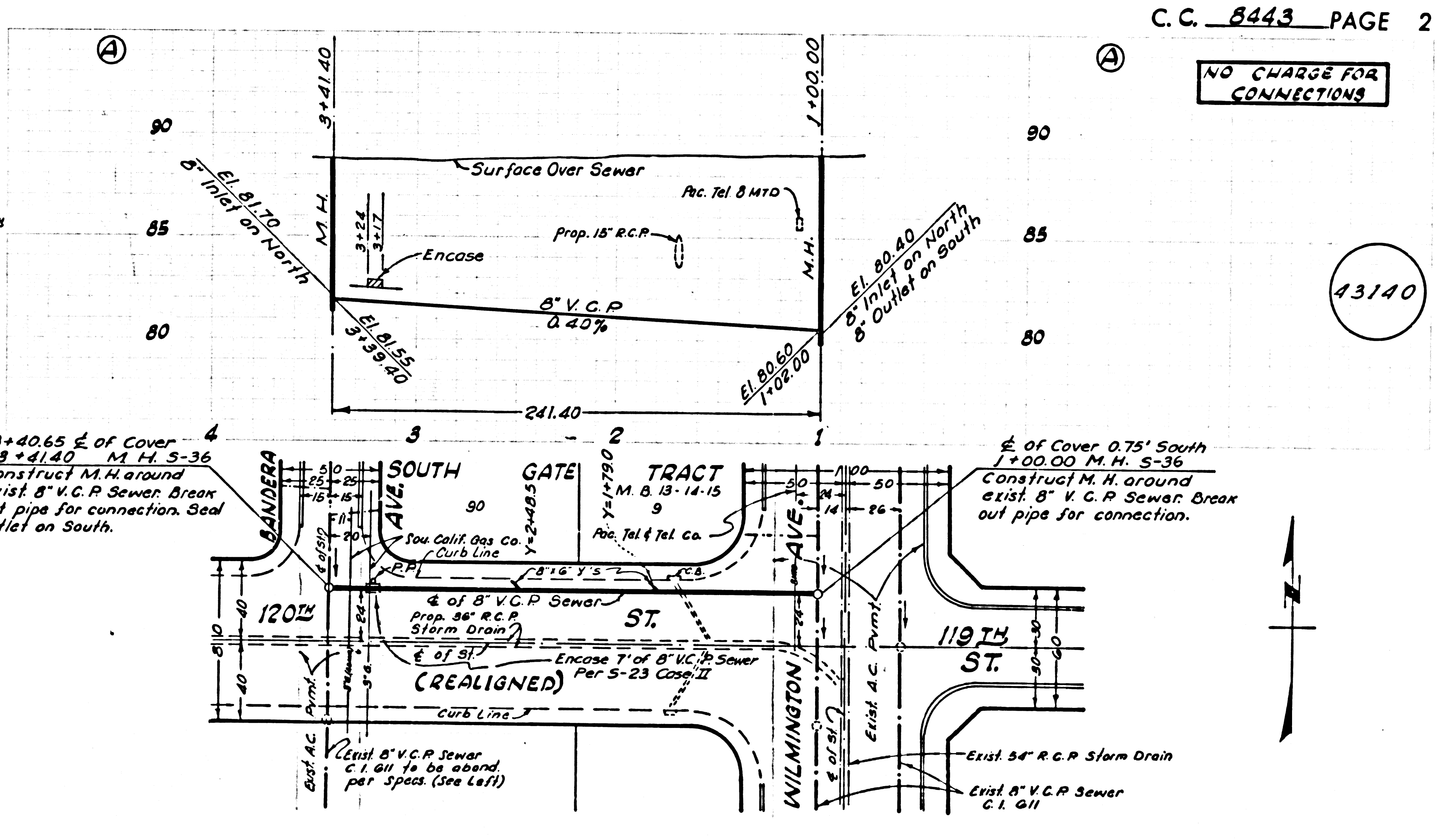
County Sanitation Districts shall be notified prior to the following work that requires investigation and approval (Phone 537-1025 or 634-8097):
 Core Drilling District trunk sewer.
 Abandonment of the project.

No connections for the disposal of industrial wastes shall be made to sewers shown on these drawings without written permission from the Chief Engineer and General Manager of the County Sanitation Districts.



EXISTING SEWERS TO BE ABANDONED
 SCALE: 1" = 200'

NOTE:
 1. Existing sewers to be abandoned per Sec. 306-2 of Special Provisions.

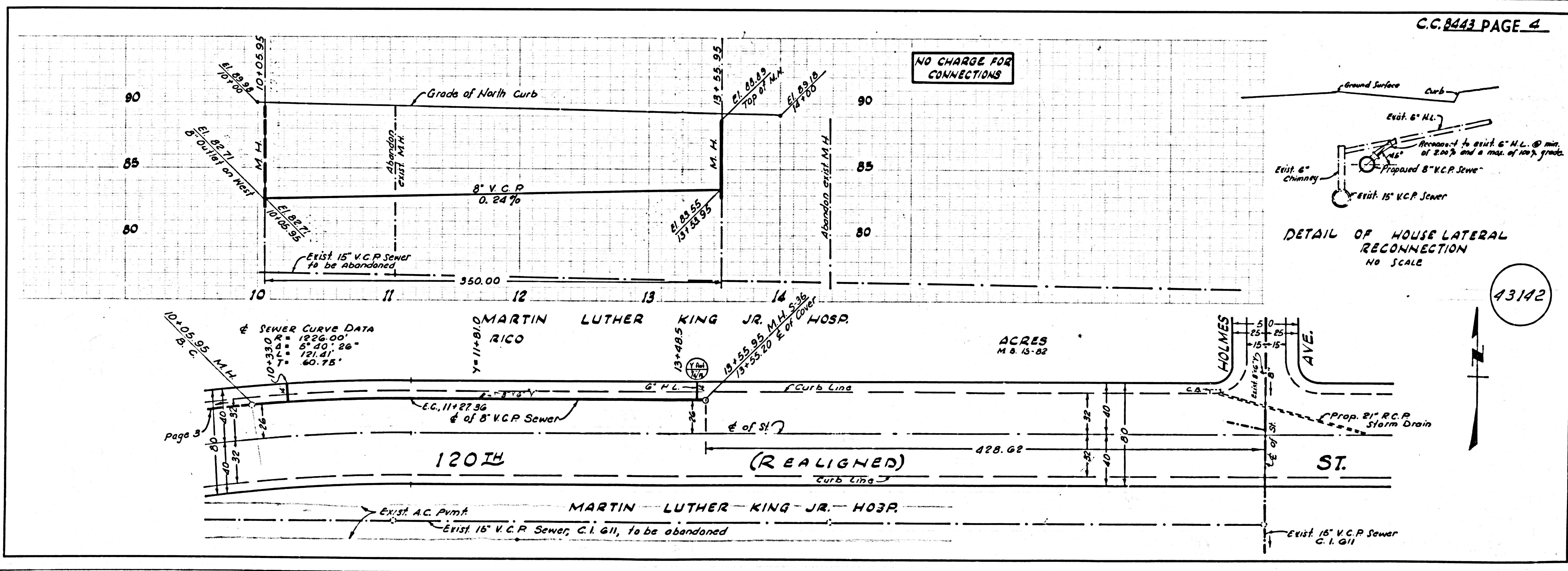
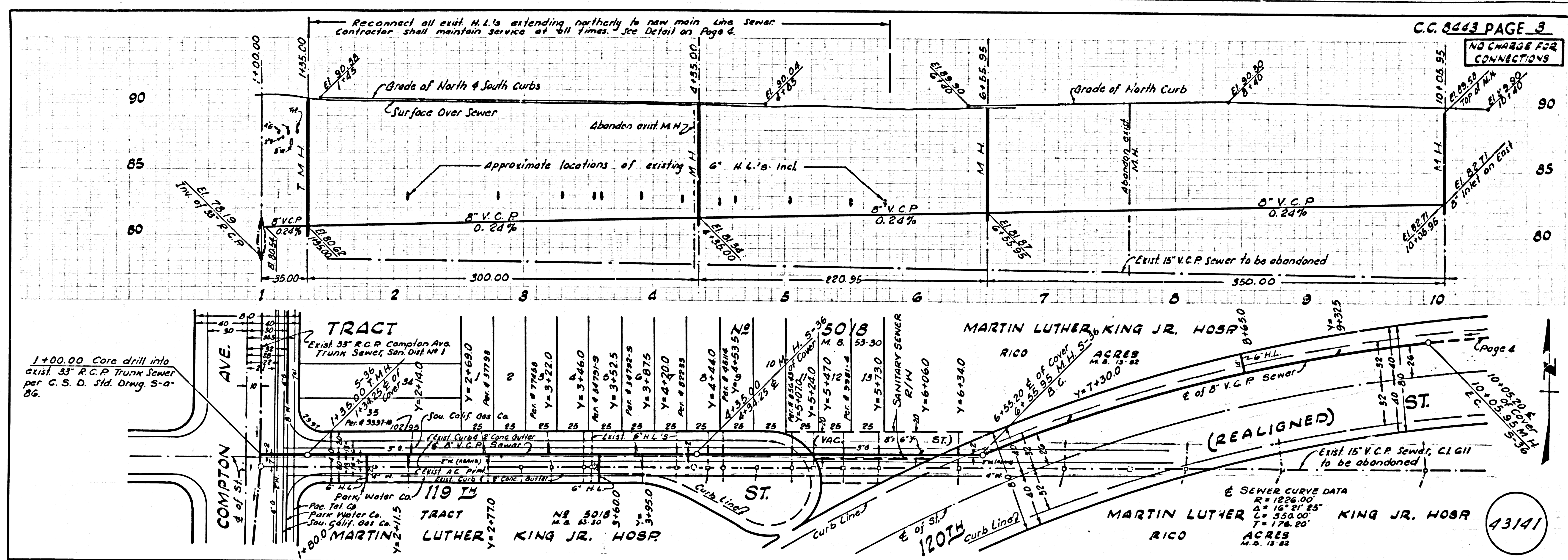


NO CHARGE FOR
 CONNECTIONS

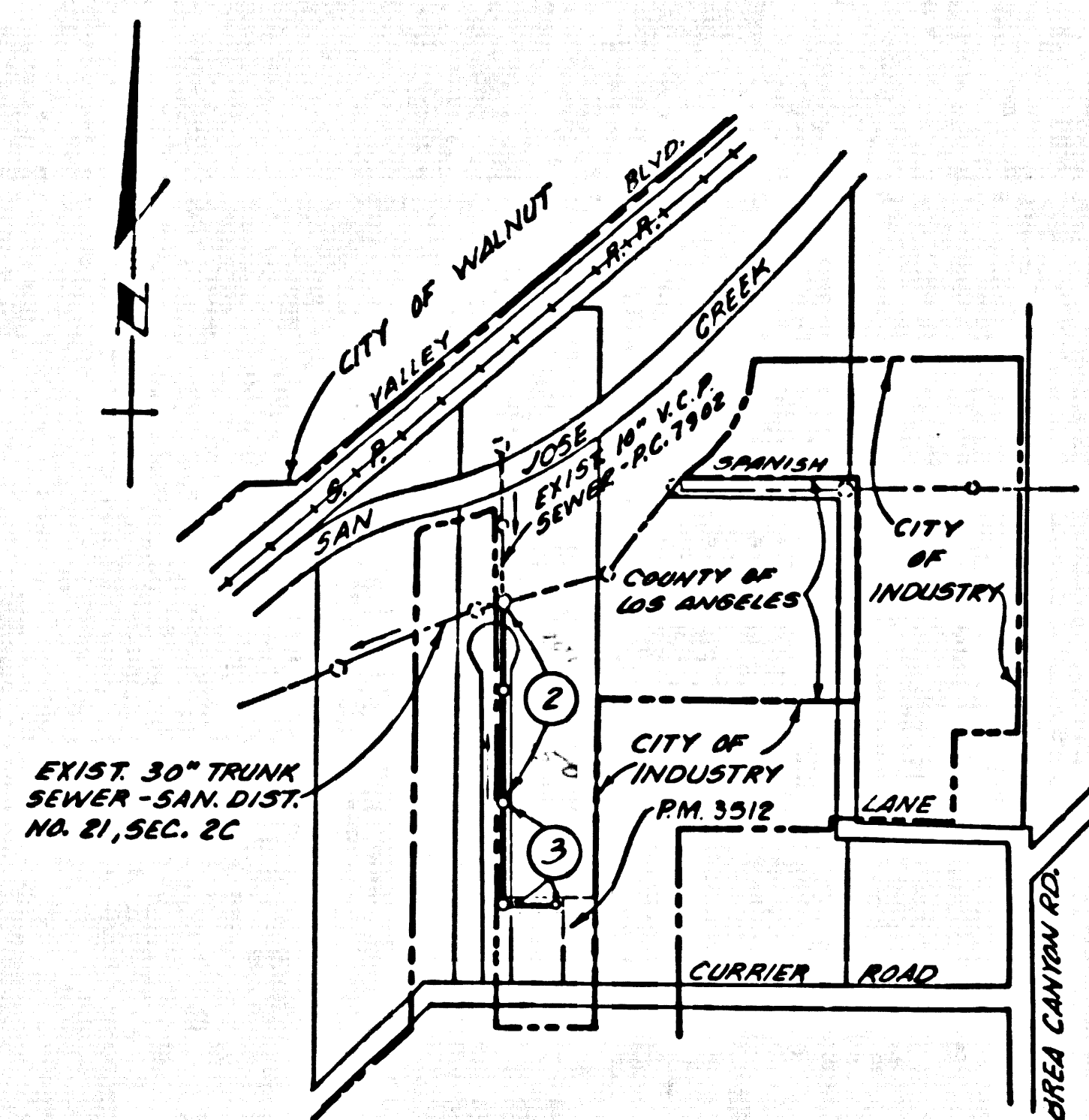
13140

3+40.65 E of Cover - 4
 3+41.80 M.H. S-36
 Construct M.H. around
 exist. 8" V.C.P. Sewer. Break
 out pipe for connection. Seal
 outlet on South.

E of Cover 0.75' South
 1+00.00 M.H. S-36
 Construct M.H. around
 exist. 8" V.C.P. Sewer. Break
 out pipe for connection.



B.M. B.G. 1789 ELEV. 527.364
 Rd. Dept. B.M. tag W. end conc. Advul. 17' S. of E
 Currier Rd. ± 46' E. of E Lemon Rd.
 Offerbein QUAD. 1965



INDEX MAP
 SCALE: 1"=600'
 P.C. - 8843

No connections for the disposal of industrial wastes shall be made to sewers shown on these drawings without written permission from the Chief Engineer and General Manager of the County Sanitation Districts.

County Sanitation Districts shall be notified prior to the following so that required inspection can be made (Phone 337-1025 - - - - -)

Breaking into existing manhole on District trunk sewer.

Acceptance of the project.

The following latest revised standard plans on file in the office of the County Engineer shall apply in the construction of this project.

Legend	3-1
Minimum Public Safety Requirements	3-2
Standard Manhole Step	3-7
Bedding for Sewer Pipe	3-21
Cradling and Encasement	3-23
Wye of Tee Support	3-26
Allowable Trench Widths	3-33
Loading Manhole Frame and Cover	3-35
Non-reinforced Precast Concrete Manhole	3-36
Brick Manhole	3-37

COLLECT CHARGES AS INDICATED

L.A. PUENTE BLDG. DIST. NO. 2.0

- NOTE:
1. PROFILE STAGES ON THE PROPERTY LINE OR PROPERTY LINES PRODUCED AT RIGHT ANGLES TO THE SEWER LINE AT THE CENTER LINE OF EACH MANHOLE.
 2. NO REPRESENTATIVE OF THE COUNTY ENGINEER WILL SURVEY OR LAY OUT ANY PORTION OF THE WORK.
 3. THE PRIVATE ENGINEER SHALL FURNISH THE COUNTY ENGINEER WITH GRADE SHEETS AND STATIONING FOR ALL HOUSE LATERALS AND "T" OR "Y" BRANCHES AND SHALL PROVIDE STAGES FOR THEM AT THEIR PROPER LOCATIONS WITH STATIONING PLAINLY MARKED. ALL HOUSE LATERALS SHALL BE CONSTRUCTED IN A STRAIGHT ALIGNMENT AT RIGHT ANGLES FROM THE MAIN LINE SEWER EXCEPT AS SHOWN ON THE PLANS. HOUSE LATERALS FROM CHIMNEYS SHALL NOT HAVE AN ANGLE OF LESS THAN 45° WITH THE MAIN LINE SEWER. ANY CHANGE IN ALIGNMENT SHALL BE REQUESTED IN WRITING BY THE PRIVATE ENGINEER.
 4. THE PRIVATE ENGINEER SHALL FURNISH THE HOUSE LATERAL DEPTH AT THE PROPERTY LINE BELOW THE TOP OF CURB ELEVATION FOR EACH HOUSE LATERAL ON THE GRADE SHEET.
 5. NO REVISIONS SHALL BE MADE IN THESE PLANS WITHOUT THE APPROVAL OF THE COUNTY ENGINEER.
 6. THE CONTRACTOR SHALL NOTIFY THE CONSTRUCTION DIVISION BY TELEPHONE, MADISON 5-467, EXT. 8158, AT LEAST TWENTY-FOUR HOURS BEFORE STATING ANY WORK UNDER THIS CONTRACT.
 7. ALL STRUCTURES SHALL BE EITHER BRICK MANHOLES PER 3-3 OR PRECAST CONCRETE MANHOLES PER 3-36 EXCEPT AS NOTED.
 8. WYES OR TEE BRANCHES MAY BE USED FOR CONNECTIONS TO MAINLINE SEWERS EXCEPT AS NOTED.
 9. MANHOLE TOPS IN UNIMPROVED RIGHTS-OF-WAY TO BE SIX INCHES ABOVE FINISHED GRADE.
 10. ALL JOINTS BETWEEN CAST IRON PIPE AND WITHIN CAST IRON SHALL BE MADE WITH A RUBBER GASKET JOINT, TYPE "C" OR "D", (WITH GASKETS IF NECESSARY) PER STANDARD SPEC., SECTION 288-2.
 11. IF A POWER POLE IS WITHIN THREE FEET OF THE SEWER, THE SEWER SHALL BE ENCASED, PER 3-25, CASE 2, TWO FEET ON EACH SIDE FROM THE POINT OF INTERFERENCE.
 12. IF DURING THE COURSE OF CONSTRUCTION IT IS DETERMINED THAT THERE IS LESS THAN FOUR FEET OF COVER OVER THE TOP OF A MAIN LINE OR HOUSE LATERAL V.C.P. SEWER WHICH IS NOT INDICATED ON THE PLANS, THE PIPE SHALL BE ENCASED PER 3-25, CASE 2, UNLESS OTHERWISE APPROVED BY THE COUNTY ENGINEER.
 13. HOUSE LATERALS TO BE CONSTRUCTED WITH WASTES AT PROPERTY LINE ± FEET BELOW CURB GRADE EXCEPT AS NOTED.
 14. RESURFACE ALL TRENCHES WITHIN PAVED AREAS TO MEET L.A. COUNTY ROAD DIST. OR CALIFORNIA STATE HIGHWAY REQUIREMENTS IN ACCORDANCE WITH PERMITS.
 15. SEWERS TO BE TESTED FOR LEAKAGE PER SECTION 306.2.2 UNIFORM STANDARD SPECIFICATIONS AND SPECIAL PROVISIONS.
 16. REFER TO SECTION 7-10.8.1 OF THE STANDARD SPECIFICATIONS, REGARDING SAFETY BARRIERS.
 17. WITHIN TRENCH CURB AND JAMBS SHALL BE TYPE "A", "B", OR "C" PER STANDARD SPECIFICATIONS SECTION 288-2.

PROFILE ALIGNMENT AND GRADE OF
 SANITARY SEWERS
 TO BE CONSTRUCTED IN

PRIVATE STREET N. OF CURRIER RD.
 PM 3512
 PRIVATE CONTRACT NO. 8843

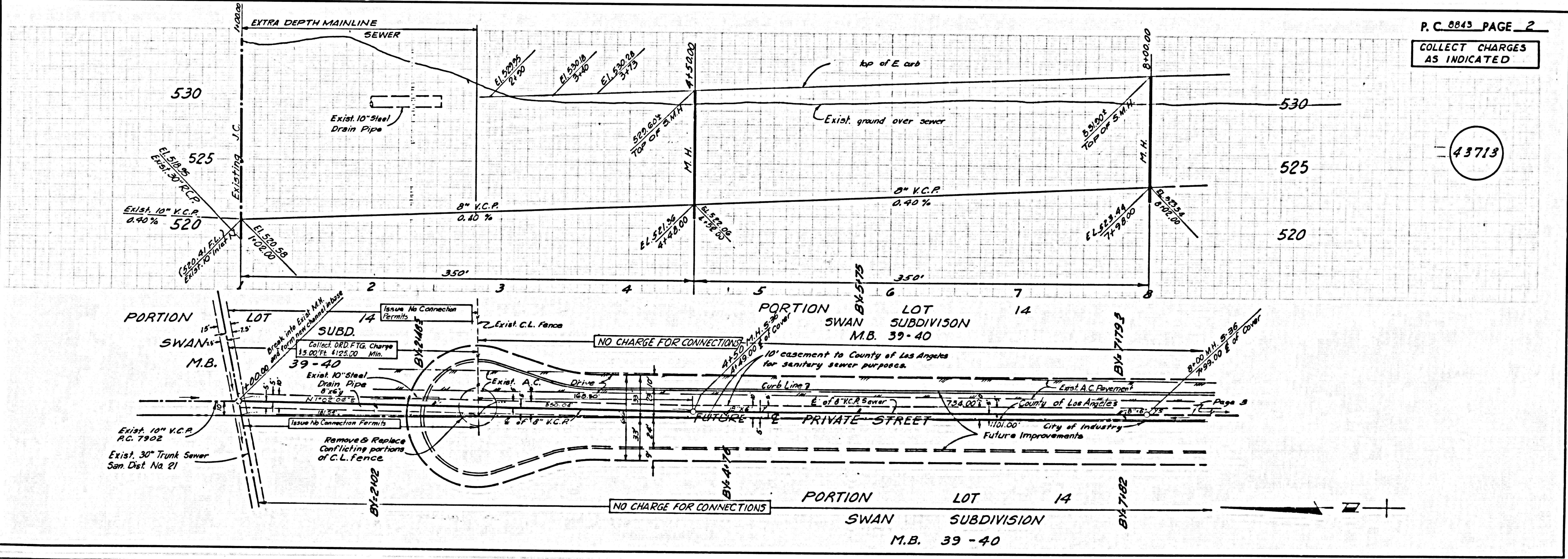
W.S. 39-43
 2 SHEETS, 3 PAGES
 SCALE: VERT. 1"=4'
 HORIZ. 1"=40'
 AUGUST, 1972
 PREPARED IN THE OFFICES OF
 NATIONAL ENGINEERING CO.
 255 N. MACIENDA BLVD.
 CITY OF INDUSTRY, CA.
 BY: George A. Cook 10/15/72
 REG. C. E. NO. 12582 43712
 FOR LEGEND SEE PLAN NO. S-1

NOTE:
 GRADES TO WHICH THIS IMPROVEMENT IS TO BE CONSTRUCTED ARE SHOWN ON PLANS AND INCHES ABOVE FOR TOP OF CURB. CENTER LINE OF STRUTS OR CENTER LINE OF ALLEYS ARE SHOWN BY CIRCLES ON PROFILES AT ALL POINTS BETWEEN DESIGNATED POINTS. THE GRADE SHALL BE ESTABLISHED SO AS TO CONFORM TO A STRAIGHT LINE DRAWN BETWEEN SAID DESIGNATED POINTS. ELEVATIONS ARE IN FEET ABOVE U.S.C. & G.S. MEAN SEA LEVEL DATUM OF 1929.
 THE DRAWING AND THE DATA HEREON ARE HEREBY MADE A PART OF THE SPECIFICATIONS.
 WORK SHALL BE CONSTRUCTED ACCORDING TO THE UNIFORM STANDARD SPECIFICATIONS FOR PUBLIC WORKS CONSTRUCTION, 1970 EDITION WITH 1971 AND 1972 ADDENDUMS AND COUNTY ENGINEER SPECIAL PROVISIONS DATED APRIL 18, 1972. BEFORE WORK CAN BE STARTED, THE CONTRACTOR MUST OBTAIN A PERMIT TO EXCAVATE IN COUNTY STREETS FROM THE L.A. COUNTY DEPARTMENT OF PUBLIC WORKS, DIVISION OF STREET AND TRAFFIC CONTROL, 1100 N. GARDEN ST., PASADENA, CALIF. 91768. PERMIT FEE IS \$100.00. ROAD DIST. OFFICE NO. 1100 N. GARDEN ST., PASADENA, CALIF. 91768. ROAD DIST. OFFICE NO. 1100 N. GARDEN ST., PASADENA, CALIF. 91768. ROAD DIST. OFFICE NO. 1100 N. GARDEN ST., PASADENA, CALIF. 91768. ROAD DIST. OFFICE NO. 1100 N. GARDEN ST., PASADENA, CALIF. 91768.
 APPROVAL OF THIS PLAN BY THE COUNTY OF LOS ANGELES DOES NOT CONSTITUTE A REPRESENTATION AS TO THE ACCURACY OF THE INFORMATION HEREON, NOR DOES IT GUARANTEE THE EXISTENCE OR NON-EXISTENCE OF ANY UNDERGROUND UTILITY PIPE, OR STRUCTURE WITHIN THE LIMITS OF THE PROJECT. THIS NOTE APPLIES TO ALL PAGES.
 IF WORK IS TO BE DONE IN A STATE HIGHWAY, A PERMIT MUST BE OBTAINED FROM THE STATE OF CALIFORNIA, DIVISION OF HIGHWAYS, 120 SOUTH SPRING STREET, LOS ANGELES, CALIFORNIA.

COUNTY OF LOS ANGELES, CALIFORNIA
 HARVEY T. BRANDT, COUNTY ENGINEER
 APPROVED BY: B. J. Parkhurst
 SAN GABRIEL REGIONAL ENGINEER

J. D. PARKHURST, CHIEF ENGINEER
 APPROVED BY: J. D. Parkhurst
 COUNTY ENGINEER
 CHECKED BY: Thomas J. Edwards
 DATE: 10/15/72
 REG. C. E. NO. 12582

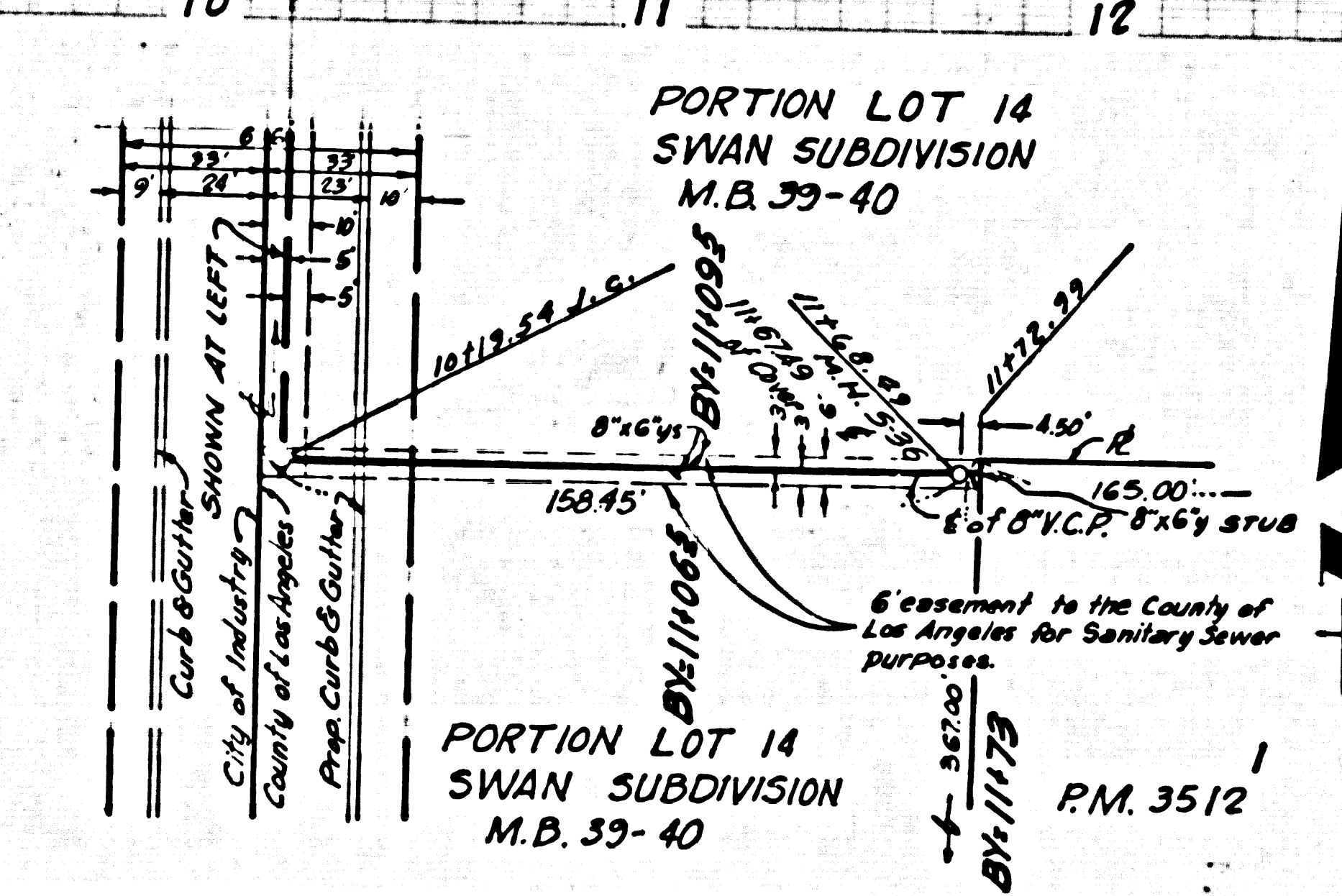
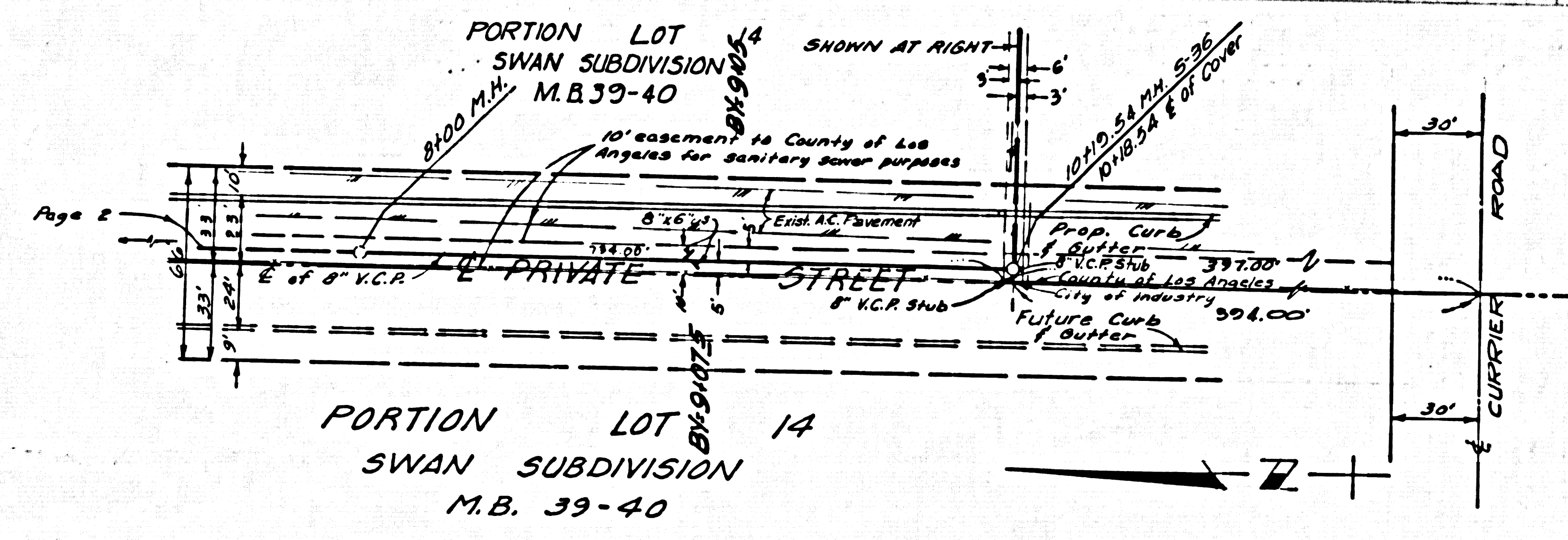
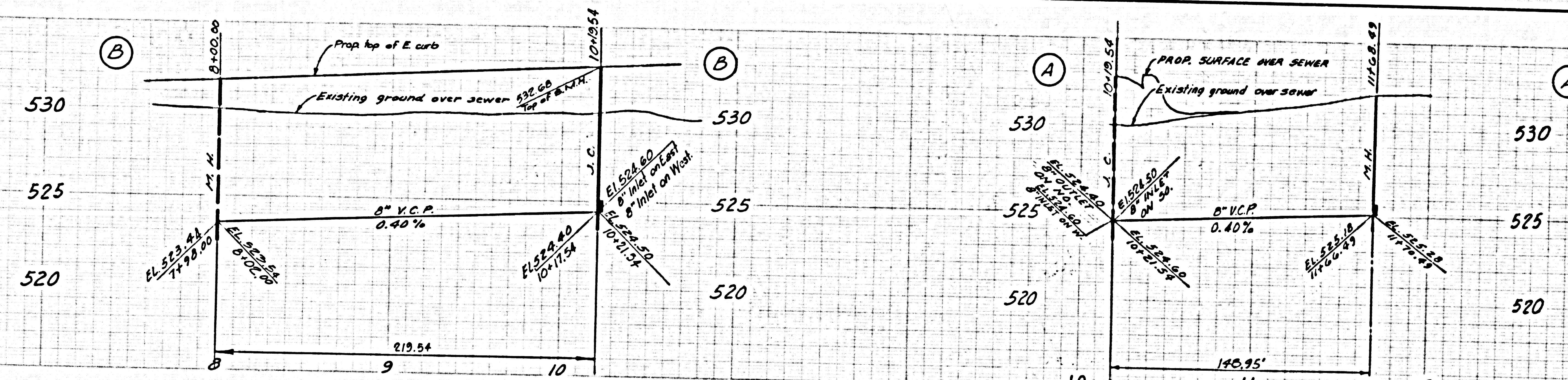
J. N. 025205



P. C. 8843 PAGE 2
 COLLECT CHARGES AS INDICATED

43713

NO CHARGE FOR CONNECTIONS



43714