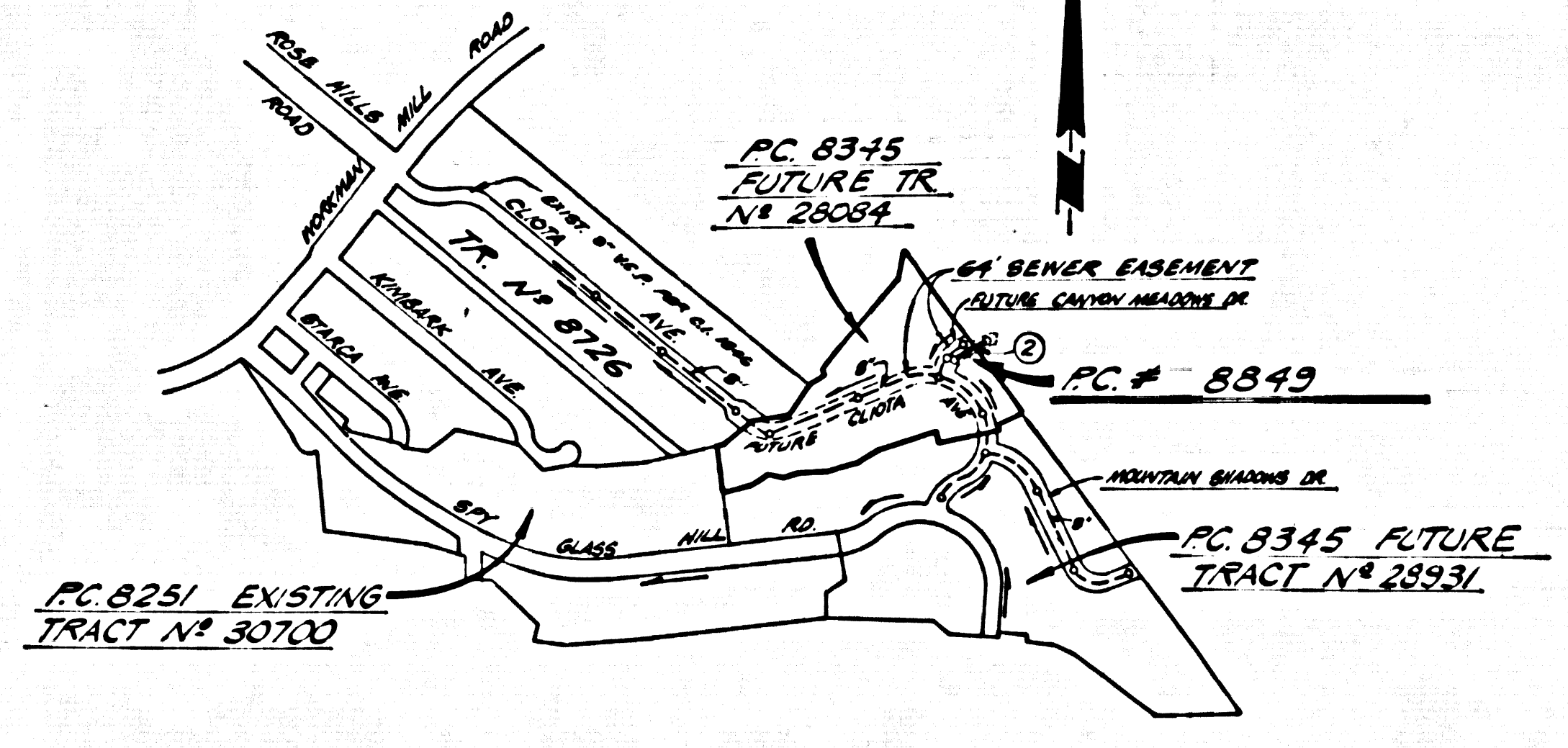


B.M. BY 4638 ELEV. 225.632  
 3247 5/4" LEAD 24" W/D EAST END OF  
 CONC. HEADWALL OF DRAIN @ STA 10+15.0  
 @ 18" HILLS & W/D ROSS HILLS ROAD  
 ON WEST SIDE OF MORTIMER HILL ROAD  
 WHITTIER QUAD. 19 65 A.U.

No Actual Use of This 6" House Lateral Shall Be Permitted Until the Following Requirements Have Been Met:  
 1. Sewer Easement has been Accepted for Public Use by the County of Los Angeles.  
 2. Easement for the Main Line Sewer Under This Private Contract has been Accepted by the County of Los Angeles.  
 3. The Private Sewer Easement to Serve the Stoddy Property has been Accepted and Evidence of its Recordation has been Submitted to the County Engineer.  
 4. This Project (PC 8849) has been Accepted for Public Use by the County Engineer.



VICINITY & SHEET INDEX MAP  
 SCALE 1"=400'  
 STODDY PROPERTY  
 PC 8849

No connections for the disposal of industrial wastes shall be made to sewers shown on these drawings without written permission from the Chief Engineer and General Manager of the County Sanitation Districts.  
 County Sanitation Districts shall be notified prior to the following so that required inspection can be made (Phone-464-4444 - 838-1181)  
 Acceptance of the project.

- GENERAL NOTES:**
- SEWERAGE AS PER THIS PLAN SHALL BE CONSTRUCTED IN ACCORDANCE WITH THE STANDARD SPECIFICATIONS FOR PUBLIC WORKS CONSTRUCTION (1978 EDITION) WITH THE SUPPLEMENT AND COUNTY ENGINEER SPECIAL PROVISIONS FOR THE CONSTRUCTION OF SANITARY SEWERS DATED APRIL 28, 1972. ALL WORK SHALL BE PROSECUTED ONLY IN THE PRESENCE OF THE COUNTY ENGINEER.
  - THE CONTRACTOR SHALL NOTIFY THE CONSTRUCTION DIVISION BY TELEPHONE, 8-4-46, EXT. 8188, AT LEAST TWENTY-FOUR HOURS BEFORE STARTING ANY WORK UNDER THIS CONTRACT.
  - HOUSE LATERALS TO BE CONSTRUCTED WITH APPROVED AT PROPERTY LINE & FEET SHOW CURB GRADE EXCEPT AS NOTED.
  - TYPE OF PIPE BRANCHES MAY BE USED FOR CONNECTIONS TO MAINLINE SEWERS EXCEPT AS NOTED.
  - ALL STRUCTURES SHALL BE BUILT BRICK OR CONCRETE UNLESS OTHERWISE SPECIFIED PER S.S. EXCEPT AS NOTED.
  - PROVIDE GRADE ON THE PROPERTY LINE OR PROPERTY LINE PROXIMATE AT RIGHT ANGLES TO THE SEWER LINE AT THE CENTER LINE OF EACH ALIQUOT.
  - MANHOLE TOPS OR UNIMPROVED HEIGHTS OF WALL TO BE SIX INCHES ABOVE FINISHED GRADE.
  - VERTICAL CURVE JOINTS SHALL BE TYPE "B", "C", OR "D" PER STANDARD SPECIFICATIONS SECTION 304-3.
  - IF A POWER POLE IS WITHIN THREE FEET OF THE SEWER, THE SEWER SHALL BE ENCASED, PER S.S. CASE 2, TWO FEET ON EACH SIDE FROM THE POINT OF INTERFERENCE.
  - IF DURING THE COURSE OF CONSTRUCTION IT IS DETERMINED THAT THERE IS LESS THAN FOUR FEET OF COVER OVER THE TOP OF A MAIN LINE OR HOUSE LATERAL V.C.P. SEWER WHICH IS NOT INDICATED ON THE PLANS, THE PIPE SHALL BE ENCASED PER S.S. CASE 2, UNLESS OTHERWISE APPROVED BY THE COUNTY ENGINEER.
  - ALL JOINTS BETWEEN CAST IRON PIPE AND VITRIFIED CLAY PIPE SHALL BE MADE WITH A RUBBER SERVE JOINT, TYPE "C" OR "D", WITH GASKETS IF NECESSARY PER STANDARD SPECIFICATIONS, SECTION 304-3.
  - SEWERS TO BE TESTED FOR LEAKAGE PER SECTION 304-3.17 OF THE STANDARD SPECIFICATIONS AND SPECIAL PROVISIONS.
  - REINFORCE ALL TRENCHES WITHIN PAVED AREAS TO MEET L.A. COUNTY ROAD DEPT. OR CALIFORNIA STATE HIGHWAY REQUIREMENTS IN ACCORDANCE WITH PERMITS.
  - INSTALL THREE (3) "4" POSTS, EIGHT FEET LONG, SET THREE FEET INTO THE GROUND AROUND THE PERIMETER OF THE MANHOLE. THE POSTS ARE TO BE MAINTAINED IN PLACE UNTIL FINAL GRADE AND THE START OF FINAL PAVING OPERATIONS HAVE BEGUN.
  - CONCRETE AROUND EXIST "6" V.C.P. SEWER AND BREAK OUT PIPE FOR CONNECTION. PLUS INLET ON EAST WITH A LEAK TEST OF SEWER.

PROFILE, ALIGNMENT AND GRADE OF  
**SANITARY SEWERS** PAGE 1  
 TO BE CONSTRUCTED IN  
 PROPOSED CANYON MEADOWS DRIVE  
 FOR STODDY PROPERTY  
 PRIVATE CONTRACT NO. 8849  
 W.S. 37  
 SHEET 1 OF 2 PAGES  
 SCALE: HORIZ. 1"=40' VERT. 1"=4'  
 NOV. 1972  
 PREPARED IN THE OFFICES OF  
 WILL DAN ENGINEERING ASSOC.  
 125 So. Cloudbury St.  
 Anaheim, Calif.  
 BY: *Will Dan*  
 REG. C. E. No. 13588

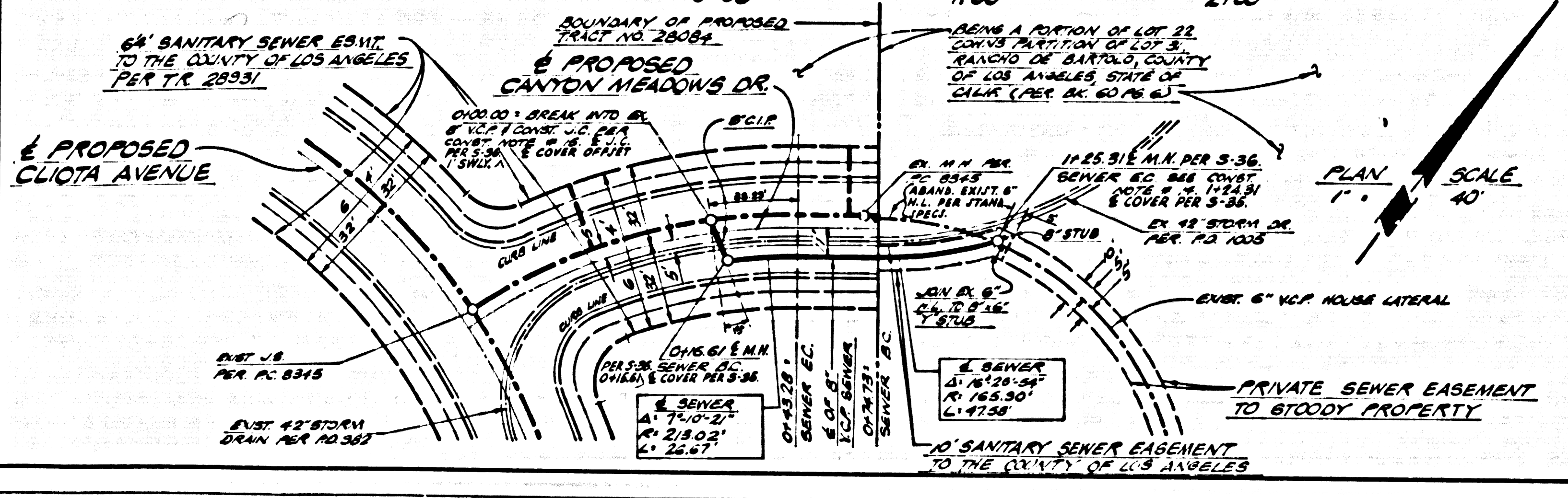
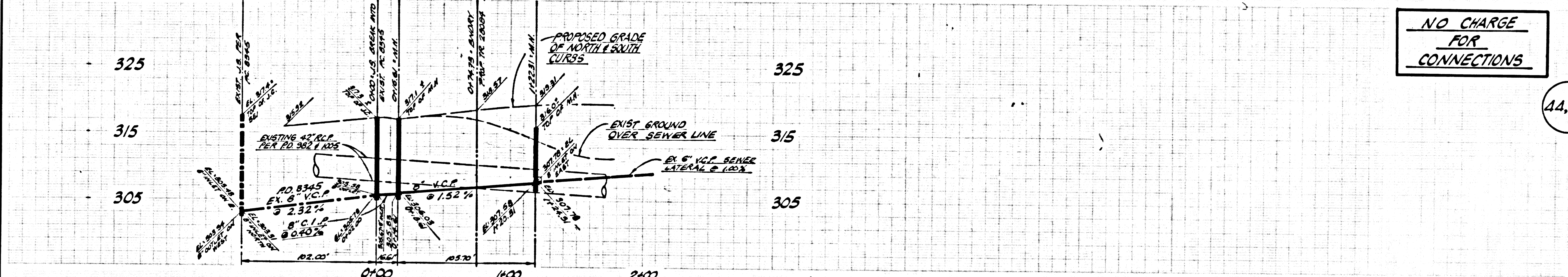
- CONSTRUCTION NOTES:**
- WORK SHALL BE CONSTRUCTED ACCORDING TO THE STANDARD SPECIFICATIONS FOR PUBLIC WORKS CONSTRUCTION (1978 EDITION) WITH THE SUPPLEMENT AND COUNTY ENGINEER SPECIAL PROVISIONS FOR THE CONSTRUCTION OF SANITARY SEWERS DATED APRIL 28, 1972. ALL WORK SHALL BE PROSECUTED ONLY IN THE PRESENCE OF THE COUNTY ENGINEER.
  - THE CONTRACTOR SHALL NOTIFY THE CONSTRUCTION DIVISION BY TELEPHONE, 8-4-46, EXT. 8188, AT LEAST TWENTY-FOUR HOURS BEFORE STARTING ANY WORK UNDER THIS CONTRACT.
  - HOUSE LATERALS TO BE CONSTRUCTED WITH APPROVED AT PROPERTY LINE & FEET SHOW CURB GRADE EXCEPT AS NOTED.
  - TYPE OF PIPE BRANCHES MAY BE USED FOR CONNECTIONS TO MAINLINE SEWERS EXCEPT AS NOTED.
  - ALL STRUCTURES SHALL BE BUILT BRICK OR CONCRETE UNLESS OTHERWISE SPECIFIED PER S.S. EXCEPT AS NOTED.
  - PROVIDE GRADE ON THE PROPERTY LINE OR PROPERTY LINE PROXIMATE AT RIGHT ANGLES TO THE SEWER LINE AT THE CENTER LINE OF EACH ALIQUOT.
  - MANHOLE TOPS OR UNIMPROVED HEIGHTS OF WALL TO BE SIX INCHES ABOVE FINISHED GRADE.
  - VERTICAL CURVE JOINTS SHALL BE TYPE "B", "C", OR "D" PER STANDARD SPECIFICATIONS SECTION 304-3.
  - IF A POWER POLE IS WITHIN THREE FEET OF THE SEWER, THE SEWER SHALL BE ENCASED, PER S.S. CASE 2, TWO FEET ON EACH SIDE FROM THE POINT OF INTERFERENCE.
  - IF DURING THE COURSE OF CONSTRUCTION IT IS DETERMINED THAT THERE IS LESS THAN FOUR FEET OF COVER OVER THE TOP OF A MAIN LINE OR HOUSE LATERAL V.C.P. SEWER WHICH IS NOT INDICATED ON THE PLANS, THE PIPE SHALL BE ENCASED PER S.S. CASE 2, UNLESS OTHERWISE APPROVED BY THE COUNTY ENGINEER.
  - ALL JOINTS BETWEEN CAST IRON PIPE AND VITRIFIED CLAY PIPE SHALL BE MADE WITH A RUBBER SERVE JOINT, TYPE "C" OR "D", WITH GASKETS IF NECESSARY PER STANDARD SPECIFICATIONS, SECTION 304-3.
  - SEWERS TO BE TESTED FOR LEAKAGE PER SECTION 304-3.17 OF THE STANDARD SPECIFICATIONS AND SPECIAL PROVISIONS.
  - REINFORCE ALL TRENCHES WITHIN PAVED AREAS TO MEET L.A. COUNTY ROAD DEPT. OR CALIFORNIA STATE HIGHWAY REQUIREMENTS IN ACCORDANCE WITH PERMITS.
  - INSTALL THREE (3) "4" POSTS, EIGHT FEET LONG, SET THREE FEET INTO THE GROUND AROUND THE PERIMETER OF THE MANHOLE. THE POSTS ARE TO BE MAINTAINED IN PLACE UNTIL FINAL GRADE AND THE START OF FINAL PAVING OPERATIONS HAVE BEGUN.
  - CONCRETE AROUND EXIST "6" V.C.P. SEWER AND BREAK OUT PIPE FOR CONNECTION. PLUS INLET ON EAST WITH A LEAK TEST OF SEWER.

THE FOLLOWING LISTED REVISED STANDARD PLANS ON FILE IN THE OFFICE OF THE COUNTY ENGINEER SHALL APPLY IN THE CONSTRUCTION OF THIS PROJECT:

SEWER	3-0
SEWER PUBLIC SAFETY REQUIREMENTS	3-0
SEWER MANHOLE	3-0
STANDARD MANHOLE STEP	3-0
SEWER FOR SEWER PIPE	3-0
CALLING AND INCASUREMENT	3-0
TYPE OF THE SUPPORT	3-0
ALLOWABLE TRENCH WIDTH	3-0
SEWER MANHOLE FRAME AND COVER	3-0
NON-REINFORCED PRECAST CONCRETE MANHOLE	3-0

COUNTY OF LOS ANGELES, CALIFORNIA  
 HARVEY T. BRANDT, COUNTY ENGINEER  
 JOHN D. PARKHURST, CHIEF ENGINEER  
 APPROVED: *Harvey T. Brandt* DATE: *11/15/72*  
 APPROVED: *John D. Parkhurst* DATE: *11/15/72*  
 CHECKED: *Quill E. McCall* DATE: *11/15/72*  
 NO. CE NO. 15931  
 WHITTIER BLDG. DIST. 11 I.N. 037175

Double Scale Vertical



NO CHARGE FOR CONNECTIONS

44,718