

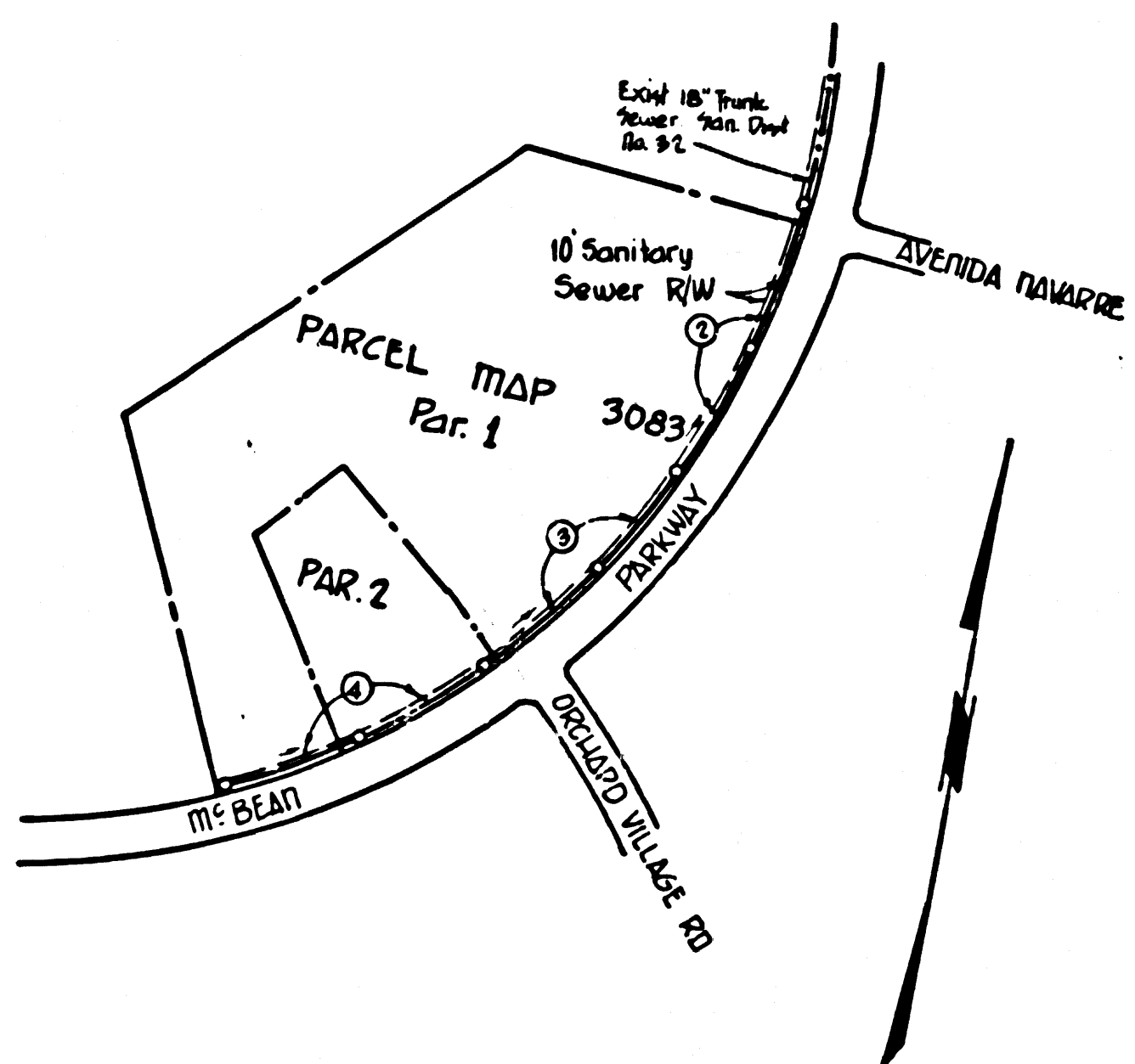
B.M. EL 2011 ELEV. 1128.101  
 F.G. MON. CONC. WIDWL. B 278+57.20  
 FT. W & SAN FERNANDO RD. + 0.8 MI. S.  
 OF SAUBUS RR.  
 STA. MKD. (B.M. 128 00910)  
 NEWHALL QUAD. 19 25

**NOTICE TO CONTRACTOR**

The existence and location of any underground utility pipes or structures shown on these plans are obtained by a search of the available record. To the best of my knowledge there are no existing utilities except those shown on these plans. The contractor is required to take the precautionary measures to locate the utility lines shown and any other lines not of record or not shown on these plans.

*Ronald R. Ruffalo* 10/23  
 R.E.

**ISSUE NO HOUSE CONNECTION PERMITS UNTIL R/W IS CLEAR & OUTLET FACILITIES ARE ACCEPTED**



INDEX MAP  
 SCALE: 1"=100'

**GENERAL NOTES:**

- ELEVATIONS ARE IN FEET ABOVE U.S.C. & G.S. SEA LEVEL DATUM OF 1929
- NO REVISIONS SHALL BE MADE IN THESE PLANS WITHOUT THE APPROVAL OF THE COUNTY ENGINEER.
- NO REPRESENTATIVE OF THE COUNTY ENGINEER WILL BE ON SITE AT ANY POSITION OF THE WORK.
- GRADES TO WHICH THIS IMPROVEMENT IS TO BE CONSTRUCTED ARE SHOWN ON PLANS AND PROFILES. GRADE POINTS FOR TOP OF CURBS, CENTER LINE OF STREETS, OR CENTER LINE OF ALLEYS ARE SHOWN BY CIRCLES ON PROFILES. AT ALL POINTS BETWEEN DESIGNATED POINTS THE GRADE SHALL BE ESTABLISHED SO AS TO CONFORM TO A STRAIGHT LINE DRAWN BETWEEN SAID DESIGNATED POINTS.
- THE PRIVATE ENGINEER SHALL FURNISH THE COUNTY ENGINEER WITH GRADE SHEETS AND STATIONING FOR ALL HOUSE LATERALS AND "T" OR "Y" BRANCHES AND SHALL PROVIDE STAKES FOR THEM AT THEIR PROPER LOCATIONS WITH STATIONING PLAINLY MARKED. ALL HOUSE LATERALS SHALL BE CONSTRUCTED BY A STRAIGHT ALIGNMENT AT RIGHT ANGLES FROM THE MAIN LINE SEWER EXCEPT AS SHOWN ON THE PLANS. HOUSE LATERALS FROM CHIMNEYS SHALL NOT HAVE AN ANGLE OF LESS THAN 45° WITH THE MAIN LINE SEWER. ANY CHANGE IN ALIGNMENT SHALL BE REQUESTED IN WRITING BY THE PRIVATE ENGINEER.
- THE PRIVATE ENGINEER SHALL FURNISH THE HOUSE LATERAL BIRTH AT THE PROPERTY LINE BELOW THE TOP OF CURB ELEVATION FOR EACH HOUSE LATERAL ON THE GRADE SHEET.
- BEFORE WORK CAN BE STARTED, THE CONTRACTOR MUST OBTAIN A PERMIT TO EXCAVATE IN COUNTY STREETS FROM THE L.A. COUNTY ROAD DEPT., DISTRICT OFFICE NO. 2, AND PAY A FEE TO THE COUNTY ENGINEER, BLDG. EAST IMPERIAL, BEAUNOY, DOWNEY, CALIFORNIA. REGIONAL OFFICE, TO COVER THE COST OF CONSTRUCTION INSPECTION AND RECORD PLANS.
- IF WORK IS TO BE DONE IN A STATE HIGHWAY, A PERMIT MUST BE OBTAINED FROM THE STATE OF CALIFORNIA, DIVISION OF HIGHWAYS, 126 SOUTH SPRING STREET, LOS ANGELES, CALIFORNIA.
- APPROVAL OF THIS PLAN BY THE COUNTY OF LOS ANGELES DOES NOT CONSTITUTE A REPRESENTATION AS TO THE ACCURACY OF THE LOCATION OF OR THE EXISTENCE OR NON-EXISTENCE OF ANY UNDERGROUND UTILITY PIPE, OR STRUCTURE WITHIN THE LIMITS OF THIS PROJECT. THIS NOTE APPLIES TO ALL PAGES.
- REFER TO SECTION 7-18.4.1 OF THE STANDARD SPECIFICATIONS, REGARDING SAFETY ORDERS.

County Sanitation Districts shall be notified prior to the following so that required inspections can be made (Phone 337-1023 - 638-1161)

No connections for the disposal of industrial wastes shall be made to sewers shown on these drawings without permission from the Chief Engineer and General Manager of the County Sanitation Districts.

**CONSTRUCTION NOTES:**

- WORK SHALL BE CONSTRUCTED ACCORDING TO THE STANDARD SPECIFICATIONS FOR PUBLIC WORKS CONSTRUCTION (1976 EDITION WITH 1971 SUPPLEMENTS) AND COUNTY ENGINEER SPECIAL PROVISIONS FOR THE CONSTRUCTION OF SANITARY SEWERS DATED APRIL 17, 1972 AND SHALL BE PROSECUTED ONLY IN THE PRESENCE OF THE COUNTY ENGINEER.
- THE CONTRACTOR SHALL NOTIFY THE CONSTRUCTION DIVISION BY TELEPHONE, AIRMAIL 9-642, ST. 81331, AT LEAST TWENTY-FOUR HOURS BEFORE STARTING ANY WORK UNDER THIS CONTRACT.
- HOUSE LATERALS TO BE CONSTRUCTED WITH INVERTS AT PROPERTY LINE 6 FEET BELOW CURB GRADE EXCEPT AS NOTED.
- WPE OR THE BRANCHES MAY BE USED FOR CONNECTIONS TO MAINLINE SEWERS EXCEPT AS NOTED.
- ALL STRUCTURES SHALL BE EITHER BRICK MANHOLES PER 8.3 OR PRECAST CONCRETE MANHOLES PER 8.3A, EXCEPT AS NOTED.
- PROVIDE STAKES ON THE PROPERTY LINE OR PROPERTY LINES PRODUCED AT RIGHT ANGLES TO THE SEWER LINE AT THE CENTER LINE OF EACH MANHOLE.
- MANHOLE TOPS IN UNIMPROVED RIGHTS OF WAY TO BE SIX INCHES ABOVE FINISHED GRADE.
- VITRIFIED CLAY PIPE JOINTS SHALL BE TYPE "B", "C", OR "D" PER STANDARD SPECIFICATIONS SECTION 808.2.
- IF A POWER POLE IS WITHIN THREE FEET OF THE SEWER, THE SEWER SHALL BE ENCASED, PER 8.23, CASE II, TWO FEET ON EACH SIDE FROM THE POINT OF INTERFERENCE.
- IF DURING THE COURSE OF CONSTRUCTION IT IS DETERMINED THAT THERE IS LESS THAN FOUR FEET OF COVER OVER THE TOP OF A MAIN LINE OR HOUSE LATERAL V.C.P. SEWER WHICH IS NOT INDICATED ON THE PLANS, THE PIPE SHALL BE ENCASED PER 8.23, CASE II UNLESS OTHERWISE APPROVED BY THE COUNTY ENGINEER.
- ALL JOINTS BETWEEN CAST IRON PIPE AND VITRIFIED CLAY PIPE SHALL BE MADE WITH A RUBBER SLEEVE JOINT, TYPE "C" OR "B", WITH RUBBERING IF NECESSARY PER STANDARD SPECIFICATIONS SECTION 808.2.
- SEWERS TO BE TESTED FOR LEAKAGE PER SECTION 306-2.32 OF THE STANDARD SPECIFICATIONS AND SPECIAL PROVISIONS.
- RESURFACE ALL TRENCHES WITHIN PAVED AREAS TO MEET L.A. COUNTY ROAD DEPT. OR CALIFORNIA STATE HIGHWAY REQUIREMENTS IN ACCORDANCE WITH PERMITS.
- SPECIAL BACKFILL IN DESIGNATED AREAS
- ALL BACKFILL AND SAFETY RELATED SHALL BE COMPACTED TO A MINIMUM OF 90% OF MAXIMUM DENSITY PER A.S.T.M. STANDARD METHOD OF TEST 3498-87T AS MODIFIED. ACCEPTABLE CERTIFICATION OF SUCH COMPACTED SHALL BE SUBMITTED TO THE CONSTRUCTION DIVISION.
- BACKFILL TRENCH AND REPLACE OTHER EARTH REMOVED SO AS TO ACHIEVE THE NATURAL OR FINISHED GRADES AND SLOPES SHOWN ON THE SEWER PLAN.

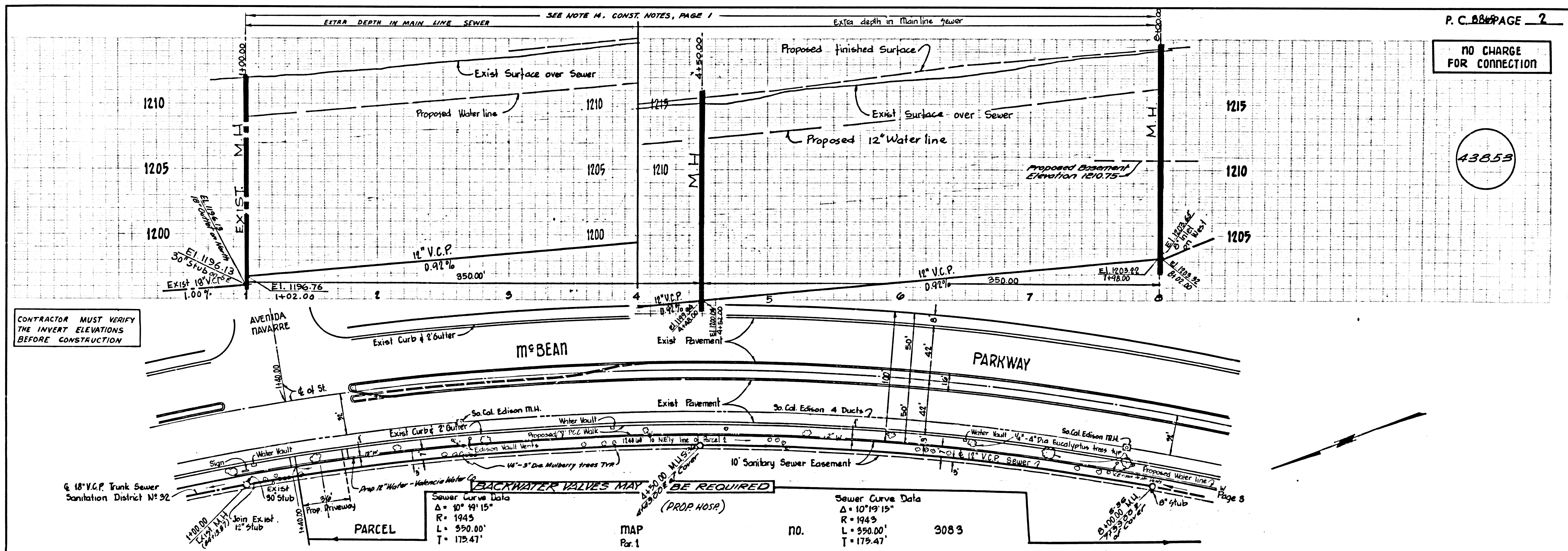
PROFILE, ALIGNMENT AND GRADE OF  
**SANITARY SEWERS** PAGE 1

CONSTRUCTED IN  
 R/W ADJACENT TO  
 Mc BEAN PARKWAY  
 FOR P.M. 3083  
**PRIVATE CONTRACT NO. 8865**  
 INDEX MAP 259 5 117  
 W.S. 61  
 2 SHEETS; 4 PAGES  
 SCALE: VERT. 1"=4'  
 HORIZ. 1"=40'  
 PREPARED IN THE OFFICES OF  
 R. E. RUFFALO & ASSOCIATES, INC.  
 18386 MULLENBURN, HOLLYWOOD,  
 SAN PETERS, CALIFORNIA 91607  
 BY: *Ronald R. Ruffalo*  
 REG. C. E. NO. 10913

THE FOLLOWING LATEST REVISED STANDARD PLANS ON FILE IN THE OFFICE OF THE COUNTY ENGINEER SHALL APPLY IN THE CONSTRUCTION OF THIS PROJECT.

LEGEND	81
MINIMUM PUBLIC SAFETY REQUIREMENTS	82
BRICK MANHOLE	83
STANDARD MANHOLE STEP	87
BEDDING FOR SEWER PIPE	88
CRACKING AND IMPEASEMENT	89
WYE OR TEE SUPPORT	90
ALLOWABLE TRENCH WIDTHS	93
LOCKING MANHOLE FRAME AND COVER	95
NON-REINFORCED PRECAST CONCRETE MANHOLE	96

COUNTY OF LOS ANGELES, CALIFORNIA  
 HARVEY T. BRANDT, COUNTY ENGINEER  
 JOHN D. PARKHURST, CHIEF ENGINEER  
 APPROVED *Am. R. D. 3-6-73* APPROVED *S. P. ...*  
 CHECKED *Rudolph J. Yehliak* 3-6-73  
 REG. C. E. NO. 14390  
 NEWHALL BLDG. DIST. 8.1 J.N. 0150.05



CONTRACTOR MUST VERIFY THE INVERT ELEVATIONS BEFORE CONSTRUCTION

SEWER CURVE DATA  
 $\Delta = 10^\circ 19' 15''$   
 $R = 194.3$   
 $L = 350.00'$   
 $T = 175.47'$

SEWER CURVE DATA  
 $\Delta = 10^\circ 19' 15''$   
 $R = 194.3$   
 $L = 350.00'$   
 $T = 175.47'$

P. C. 8865 PAGE 2  
 NO CHARGE FOR CONNECTION

43855

