

B.M. BY 3250 ELEV. 239.100
 LYT S. CURB SHERBILL ST. 75' E
 C/L PIONEER BLVD. 4' E. OF END
 OFF CURB C/P. H.S.E. NO. 10204
 WHITTIER QUAD. 19.65

THE FOLLOWING LATEST REVISED STANDARD PLANS FILE IN THE OFFICE OF THE COUNTY ENGINEER SHALL APPLY IN THE CONSTRUCTION OF THIS PROJECT:

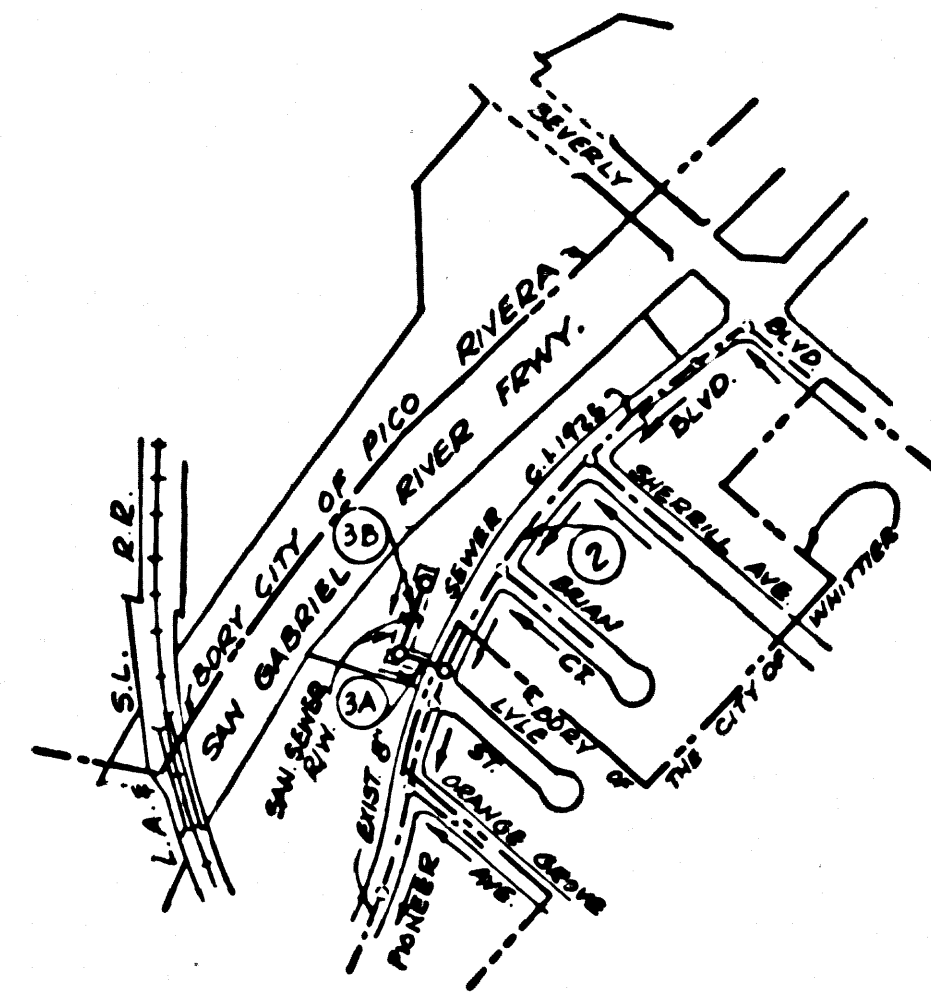
LEGEND	3-1
MINIMUM PUBLIC SAFETY REQUIREMENTS	3-2
BRICK MANHOLE	3-3
STANDARD MANHOLE STEP	3-17
BEDDING FOR SEWER PIPE	3-21
CRADLING AND ENCASEMENT	3-23
WYE OR TEE SUPPORT	3-26
ALLOWABLE TRENCH WIDTHS	3-33
LOCKING MANHOLE FRAME AND COVER	3-35
NON-REINFORCED PRECAST CONCRETE MANHOLE	3-36
SADDLES FOR HOUSE LATERALS	3-28

REVISION NO. 2 SEPTEMBER 11, 1973
 1. DELETED ENCASEMENT OF H.L. ACROSS 30" WATER ON PIONEER BLVD.
 2. ADDED 6" C.I.P. H.L. ACROSS 30" WATER ON PIONEER BLVD.

APPROVED: *R.P. Murphy* DATE: 9-12-73
 OFFICE OF THE COUNTY ENGINEER

REVISION NO. 1 AUGUST 14, 1973
 1. DELETED 4" H.L. AT 0454, 0459, 1105 & 1109 ON PG. 3-A
 2. ADDED 6" H.L. AT 0454 & 6" WYE 1/2" H.L. TO 5" W. AT 1109 ON PG. 3-A
 3. DELETED 4" H.L. AT 1152, 1170, 2102, 2120, 2127, 2148 & 2152 ON PG. 3-B
 4. ADDED 6" H.L. AT 2148 ON PG. 3-B
 5. CORRECTED SIDELINE DIMENSIONS OF R/W ON PGS. 3-A & B.

APPROVED: *R.P. Murphy* DATE: 8-15-73
 OFFICE OF THE COUNTY ENGINEER



INDEX MAP
 SCALE: 1"=600'
 P.C. 8869

County Sanitation Districts shall be notified prior to the following so that required inspection can be made (Phone 337-1023 x 5306-1181)

No connections for the disposal of industrial wastes shall be made to sewers shown on these drawings without written permission from the Chief Engineer and General Manager of the County Sanitation Districts.

WHITTIER BLDG. DIST. NO. 11

PROFILE, ALIGNMENT AND GRADE OF
 SANITARY SEWERS PAGE 1
 TO BE CONSTRUCTED IN

TRACT NO. 27620 (44,341)

PRIVATE CONTRACT NO. 8869

W.S. 37

2 SHEETS, 3 PAGES

SCALE: HORIZ. 1"=40' VERT. 1"=4'

DATE: DECEMBER, 1972

PREPARED IN THE OFFICE OF
 TECHNOLOGICAL ENGINEERING CORP
 4921 DURFEE AVE. P.O. BOX 337
 PICO RIVERA, CALIFORNIA 90660

BY: *J.H. Vallis*
 REG. C.E. NO. 10410

FOR LEGEND SEE PLAN NO. 1

NOTE:

- PROVIDE STAKES ON THE PROPERTY LINE OR PROPERTY LINES PRODUCED AT RIGHT ANGLES TO THE SEWER LINE AT THE CENTER LINE OF EACH MANHOLE.
- NO REPRESENTATIVE OF THE COUNTY ENGINEER WILL SURVEY OR LAY OUT ANY PORTION OF THE WORK.
- THE PRIVATE ENGINEER SHALL FURNISH THE COUNTY ENGINEER WITH GRADE SHEETS AND STATIONING FOR ALL HOUSE LATERALS AND "T" BRANCHES AND SHALL PROVIDE STAKES FOR THEM AT THEIR PROPER LOCATIONS WITH STATIONING PLAINLY MARKED. ALL HOUSE LATERALS SHALL BE CONSTRUCTED AT RIGHT ANGLES FROM THE MAIN LINE SEWER EXCEPT AS SHOWN ON THE PLANS. HOUSE LATERALS FROM CHIMNEYS SHALL NOT HAVE AN ANGLE OF LESS THAN 45° WITH THE MAIN LINE SEWER. ANY CHANGE IN ALIGNMENT SHALL BE REQUESTED IN WRITING BY THE PRIVATE ENGINEER.
- THE PRIVATE ENGINEER SHALL FURNISH THE HOUSE LATERAL DEPTH AT THE PROPERTY LINE BELOW THE TOP OF CURB ELEVATION FOR EACH HOUSE LATERAL ON THE GRADE SHEET.
- NO REVISIONS SHALL BE MADE IN THESE PLANS WITHOUT THE APPROVAL OF THE COUNTY ENGINEER.
- THE CONTRACTOR SHALL NOTIFY THE CONSTRUCTION DIVISION BY TELEPHONE, MADISON 6-6749, EXT. 81381, AT LEAST TWENTY-FOUR HOURS BEFORE STARTING ANY WORK UNDER THIS CONTRACT.
- ALL STRUCTURES SHALL BE: 6" BRICK MANHOLES PER S-3 OR PRECAST CONCRETE MANHOLES PER S-36, EXCEPT AS NOTED.
- USE STANDARD MANHOLE FRAMES AND COVERS, E.S.E.
- MANHOLE TOPS IN IMPROVED RIGHTS-OF-WAY TO BE AT FINISH GRADE.
- USE EXTRA STRENGTH PIPE. ALL PIPE IS STANDARD DEPTH EXCEPT AS NOTED.
- USE MECHANICAL COMPRESSION JOINTS FOR ALL V.C.P. JOINTS PER SPEC. SECS. 208-2 TYPE "D", "H" OR "O".
- IF A POWER POLE IS WITHIN THREE FEET OF THE SEWER, THE SEWER SHALL BE ENCASED, PER S-23, TWO FEET ON EACH SIDE FROM THE POINT OF INTERFERENCE.
- IF DURING THE COURSE OF CONSTRUCTION IT IS DETERMINED THAT THERE IS LESS THAN FOUR FEET OF COVER OVER THE 30" MAIN LINE OR HOUSE LATERAL V.C.P. SEWER WHICH IS NOT INDICATED ON THE PLANS, THE PIPE SHALL BE ENCASED PER S-23, TWO FEET OTHERWISE APPROVED BY THE COUNTY ENGINEER.
- HOUSE LATERALS TO BE CONSTRUCTED WITH 1/2" HIGH PINE PHOTO BIRCH, TO PROPERTY LINE.
- RESURFACE ALL TRENCHES WITHIN PAVED AREAS TO MEET L.A. COUNTY ROAD DEPT. OR CALIFORNIA STATE HIGHWAY REQUIREMENTS IN ACCORDANCE WITH PERMITS.
- SEWERS TO BE TESTED FOR LEAKAGE PER SECTION 306-2.5.7 OF THE STANDARD SPECIFICATIONS AND SPECIAL PROVISIONS.
- SEWERS TO BE TESTED FOR LEAKAGE PER SECTION 306-2.5.7 OF THE STANDARD SPECIFICATIONS AND SPECIAL PROVISIONS.
- ALL JOINTS BETWEEN CAST-IRON PIPE AND VITRIFIED CLAY PIPE SHALL BE MADE WITH A GUBBER GLENN JOINT TYPE "C" OR "D" (WHICH IS NEAREST TO THE JOINT) PER STANDARD SPECIFICATIONS, SECTION 306-2.
- FULL COMPLIANCE WITH SECTION 306-1.8.3 OF THE SPECIAL PROVISIONS WILL BE REQUIRED FOR BACKFILL IN BATTERIES. CERTIFICATION OF BACKFILL COMPACTION AND SAND EQUIVALENTS BY A QUALIFIED, INDEPENDENT TESTING LABORATORY SHALL BE PROVIDED BY THE PERMITTED PRIOR TO ISSUANCE OF A CERTIFICATE OF PARTIAL ACCEPTANCE.

NOTICE TO CONTRACTOR

The existence and location of any underground utility pipes or structures shown on these plans are obtained by a search of the available records. To the best of my knowledge there are no existing utilities except as shown on these plans. The contractor is required to take due precautionary measures to protect the utility lines shown and other lines not of record or not shown on these plans.

COLLECT CHARGES AS INDICATED

GRADERS TO WHICH THIS IMPROVEMENT IS TO BE CONSTRUCTED ARE SHOWN ON PLANS AND PROFILE. GRADE POINTS FOR TOP OF CURB, CENTER LINE OF STREETS, OR CENTER LINE OF ALLEYS ARE SHOWN BY CIRCLES ON PROFILES. AT ALL POINTS BETWEEN DESIGNATED ELEVATIONS ARE IN FEET ABOVE U.S.C. & G.S. MEAN SEA LEVEL, DATUM OF 1929.

THIS DRAWING AND THE DATA HEREON ARE HEREBY MADE A PART OF THE SPECIFICATIONS.

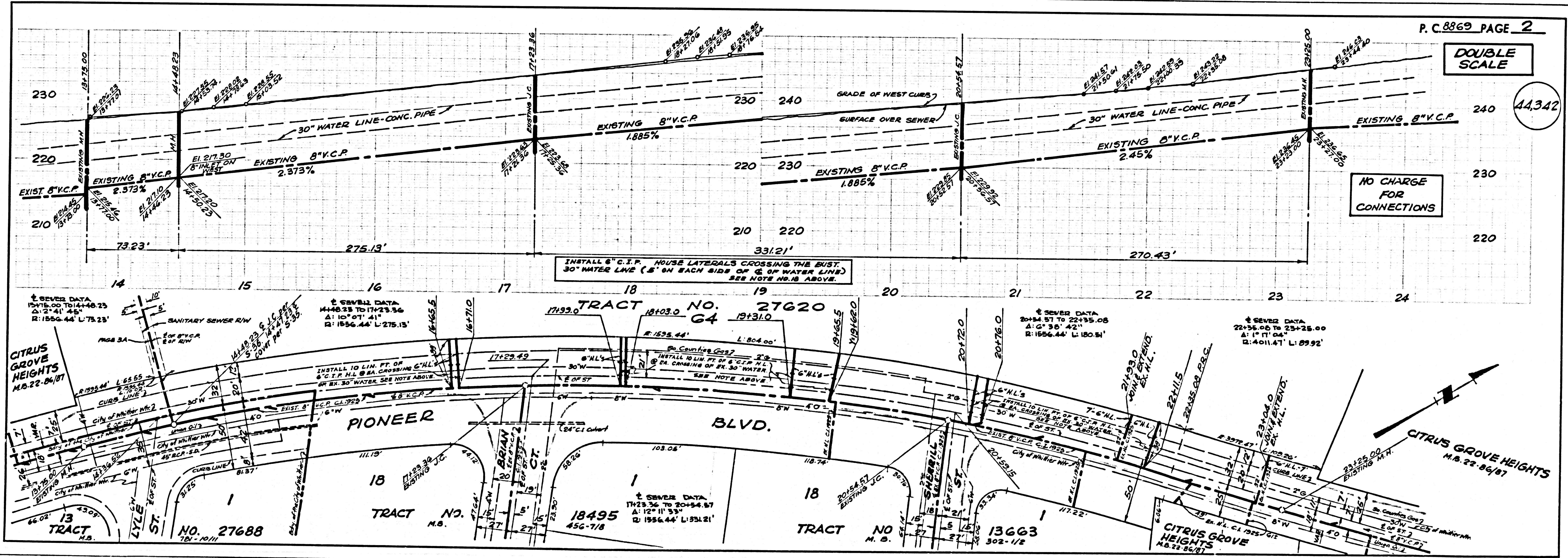
THE CONTRACTOR SHALL BE RESPONSIBLE FOR OBTAINING ALL NECESSARY PERMITS FROM THE L.A. COUNTY BOARD OF SUPERVISORS, DISTRICT OFFICE NO. 14, 212 S. 1ST ST., LOS ANGELES, CALIFORNIA 90012, AND THE L.A. COUNTY BOARD OF SUPERVISORS, DISTRICT OFFICE NO. 14, 212 S. 1ST ST., LOS ANGELES, CALIFORNIA 90012, FOR THE CONSTRUCTION OF THIS PROJECT. THE CONTRACTOR SHALL BE RESPONSIBLE FOR OBTAINING ALL NECESSARY PERMITS FROM THE L.A. COUNTY BOARD OF SUPERVISORS, DISTRICT OFFICE NO. 14, 212 S. 1ST ST., LOS ANGELES, CALIFORNIA 90012, AND THE L.A. COUNTY BOARD OF SUPERVISORS, DISTRICT OFFICE NO. 14, 212 S. 1ST ST., LOS ANGELES, CALIFORNIA 90012, FOR THE CONSTRUCTION OF THIS PROJECT. THE CONTRACTOR SHALL BE RESPONSIBLE FOR OBTAINING ALL NECESSARY PERMITS FROM THE L.A. COUNTY BOARD OF SUPERVISORS, DISTRICT OFFICE NO. 14, 212 S. 1ST ST., LOS ANGELES, CALIFORNIA 90012, AND THE L.A. COUNTY BOARD OF SUPERVISORS, DISTRICT OFFICE NO. 14, 212 S. 1ST ST., LOS ANGELES, CALIFORNIA 90012, FOR THE CONSTRUCTION OF THIS PROJECT.

COUNTY OF LOS ANGELES, CALIFORNIA
 HARVEY T. BRANTZ, COUNTY ENGINEER
 APPROVED BY: *[Signature]*
 L.A. COUNTY REGIONAL ENGINEER

J. D. PARKHURST, CHIEF ENGINEER
 CO. SAN DIST. NO. 11
 APPROVED BY: *[Signature]*
 OFFICE ENGINEER

CHECKED BY: *Quill & McColl* REF: r/r
 REG. C.E. NO. 15731

J. N. O250.02



P.C. 8869 PAGE 2

DOUBLE SCALE

44,342

NO CHARGE FOR CONNECTIONS

NO CHARGE FOR CONNECTIONS

DOUBLE SCALE

44,343

