

B.M. BY 7552 ELEV. 894.107
 RDBM TAG 1 FT. N. 8CR NE COR KANAN
 RD. S. CANWOOD ST., 60 FT. N & 40 FT.
 E. E. INT. 250 FT. N BRIDGE 53-945
 OVER VENTURA FWY
 MALIBU QUAD. 1965

CHANGE OF PLAN No. 1

Relocate Main Line Sewer shown on page 8B.
 Relocate Main Line Sewer shown on page 4
 between Sta. 13153.44 and Sta. 17174.90
 Relocate Junction Chamber of Sta. 14171.84
 Revised Stationing on page 8.

by Sheldon E. Tull R.C.E. 14375 4-9-70
 Date
 Approved Sheldon E. Tull R.C.E. 14375 4-6-70
 Date
 Office of the Co. Engr.

GALABASAS BLDG. DIST. NO. 9.1

- NOTE:
- HOUSE LATERALS TO BE CONSTRUCTED WITH INVERTS AT PROPERTY LINE 4 FEET BELOW CURB GRADE EXCEPT AS NOTED.
 - PROVIDE STAKES ON THE PROPERTY LINE OR PROPERTY LINES PRODUCED AT RIGHT ANGLES TO THE SEWER LINE AT THE CENTER LINE OF EACH MANHOLE.
 - NO REPRESENTATIVE OF THE COUNTY ENGINEER WILL SURVEY OR LAY OUT ANY PORTION OF THE WORK.
 - THE PRIVATE ENGINEER SHALL FURNISH THE COUNTY ENGINEER WITH GRADE SHEETS AND STATIONING FOR ALL HOUSE LATERALS AND "T" OR "T" BRANCHES AND SHALL PROVIDE STAKES FOR THEM AT THEIR PROPER LOCATIONS WITH STATIONING PLAINLY MARKED. ALL HOUSE LATERALS SHALL BE CONSTRUCTED AT RIGHT ANGLES TO THE MAIN LINE SEWER EXCEPT AS SHOWN ON THE PLANS. HOUSE LATERALS FROM CHIMNEYS SHALL NOT HAVE AN ANGLE OF LESS THAN 45° WITH THE MAIN LINE SEWER. ANY CHANGE IN ALIGNMENT SHALL BE REQUESTED IN WRITING BY THE PRIVATE ENGINEER.
 - THE PRIVATE ENGINEER SHALL FURNISH THE HOUSE LATERAL DEPTH AT THE PROPERTY LINE BELOW THE TOP OF CURB ELEVATION FOR EACH HOUSE LATERAL ON THE GRADE SHEET.
 - NO REVISIONS SHALL BE MADE IN THESE PLANS WITHOUT THE APPROVAL OF THE COUNTY ENGINEER.
 - THE CONTRACTOR SHALL NOTIFY THE COUNTY ENGINEER BY TELEPHONE, MARSHON 8-404, EXT. 8158, AT LEAST TWENTY-FOUR HOURS BEFORE STARTING ANY WORK UNDER THIS CONTRACT.
 - ALL STRUCTURES SHALL BE EITHER BRICK MANHOLES PER S-2 OR PRECAST CONCRETE MANHOLES PER S-3 OR S-4, EXCEPT AS NOTED.
 - "T" OR "T" BRANCHES MAY BE USED FOR CONNECTIONS TO MAINLINE SEWERS EXCEPT AS NOTED.
 - MANHOLE TOPS IN UNIMPROVED RIGHTS OF WAY TO BE SIX INCHES ABOVE FINISHED GRADE.
 - USE EXTRA STRENGTH PIPE ALL PIPE IS STANDARD DEPTH EXCEPT AS NOTED.
 - VITRIFIED CLAY PIPE JOINTS SHALL BE TYPE "B", "C", OR "D" PER STANDARD SPECIFICATIONS SECTION 306.2.
 - IF A POWER POLE IS WITHIN THREE FEET OF THE SEWER, THE SEWER SHALL BE ENCASED, PER S-23, TWO FEET ON EACH SIDE FROM THE POINT OF INTERFERENCE.
 - IF DURING THE COURSE OF CONSTRUCTION IT IS DETERMINED THAT THERE IS LESS THAN FOUR FEET OF COVER OVER THE TOP OF A MAIN LINE OR HOUSE LATERAL V.C.P. SEWER WHICH IS NOT INDICATED ON THE PLANS, THE PIPE SHALL BE ENCASED PER S-23, UNLESS OTHERWISE APPROVED BY THE COUNTY ENGINEER.
 - REINFORCE ALL TRENCHES WITHIN PAVED AREAS TO MEET L.A. COUNTY ROAD DEPT. OR CALIFORNIA STATE HIGHWAY REQUIREMENTS IN ACCORDANCE WITH PERMITS.
 - SEWERS TO BE TESTED FOR LEAKAGE BY AIR TEST METHOD PER SEC. 306-2.37. G OF THE STANDARD SPECS.
 - REFER TO SECTION 7-184.1 OF THE STANDARD SPECIFICATIONS, REGARDING SAFETY ORDERS.
 - ALL JOINTS BETWEEN CAST IRON PIPE AND VITRIFIED CLAY PIPE SHALL BE MADE WITH A RUBBER SLEEVE JOINT, TYPE "C" OR "D", WITH BUSHING IF NECESSARY PER STANDARD SPECIFICATIONS, SECTION 306.3.
 - ALL TRENCHES IN UNIMPROVED AREAS SHALL BE INDICATED DEPTHS BELOW CURB GRADE.
- THE FOLLOWING LATEST REVISED STANDARD PLANS ON FILE IN THE OFFICE OF THE COUNTY ENGINEER SHALL APPLY IN THE CONSTRUCTION OF THIS PROJECT:

MINIMUM PUBLIC SAFETY REQUIREMENTS	S-1
BRICK MANHOLE	S-2
NON-REINFORCED PRECAST CONCRETE MANHOLE	S-3
REINFORCED PRECAST CONCRETE MANHOLE	S-4
MANHOLE FRAME AND COVER	S-5
STANDARD MANHOLE STEP	S-7
BUSHING FOR SEWER PIPE	S-21
CHASING AND ENCASUREMENT	S-23
WYE OR TEE SUPPORT	S-24
ADJUSTABLE TRENCH WITHES	S-25
SPECIAL SUPPORT AND PROTECTION	S-26

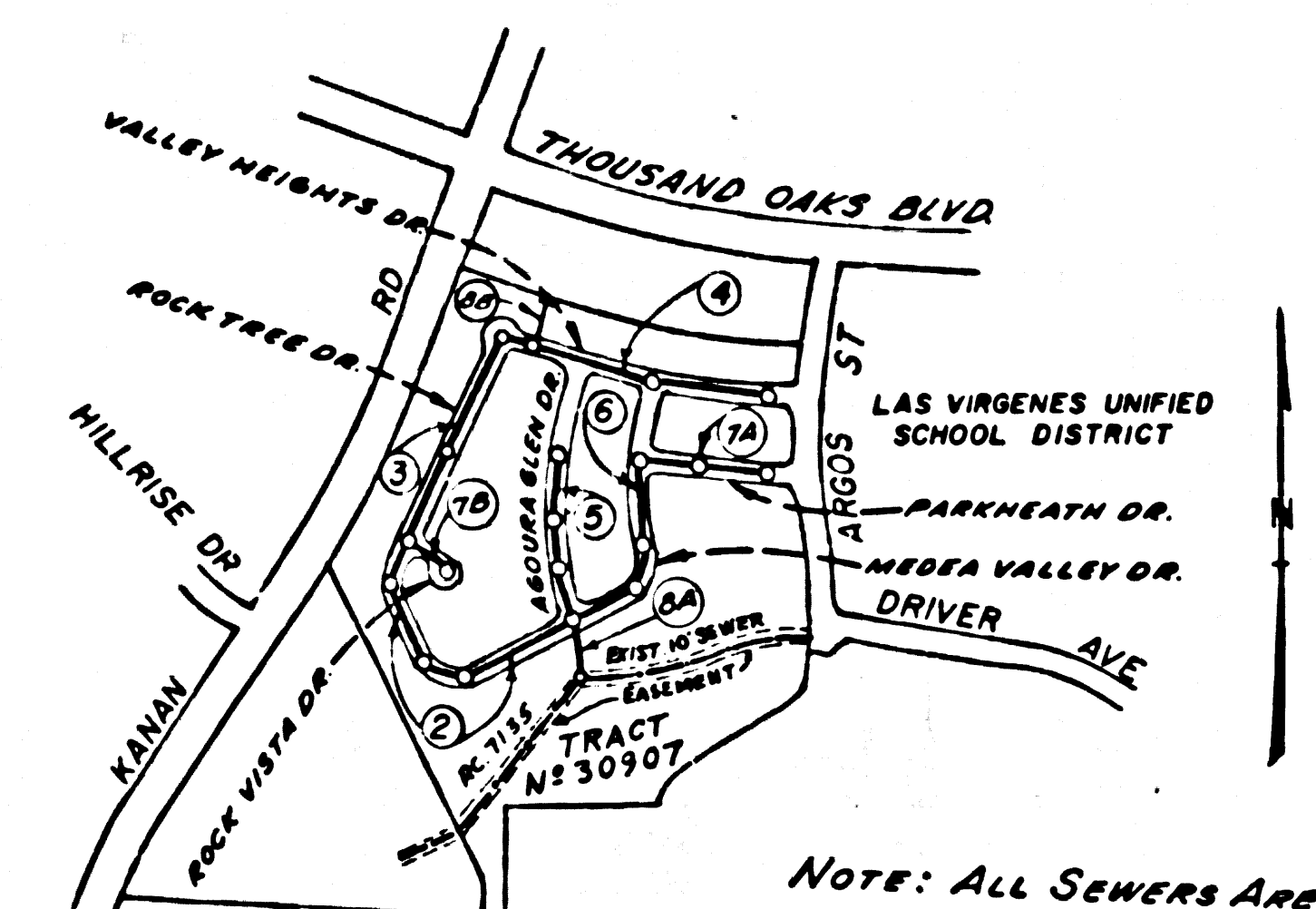
PROFILE, ALIGNMENT AND GRADE OF
SANITARY SEWERS P.C. 8370
 TO BE CONSTRUCTED IN PAGE 1
TRACT N° 30907

PRIVATE CONTRACT NO. 8370

W.S. 90
 4 SHEETS; 8 PAGES
 SCALE: HORIZ. 1"=40' VERT. 1"=4'
 SEPTEMBER, 1969
 PREPARED IN THE OFFICES OF
C.F. BRAUN & CO ENGINEERS
 ALHAMBRA CALIFORNIA
 BY: Sheldon E. Tull
 REG. C. E. NO. 14375

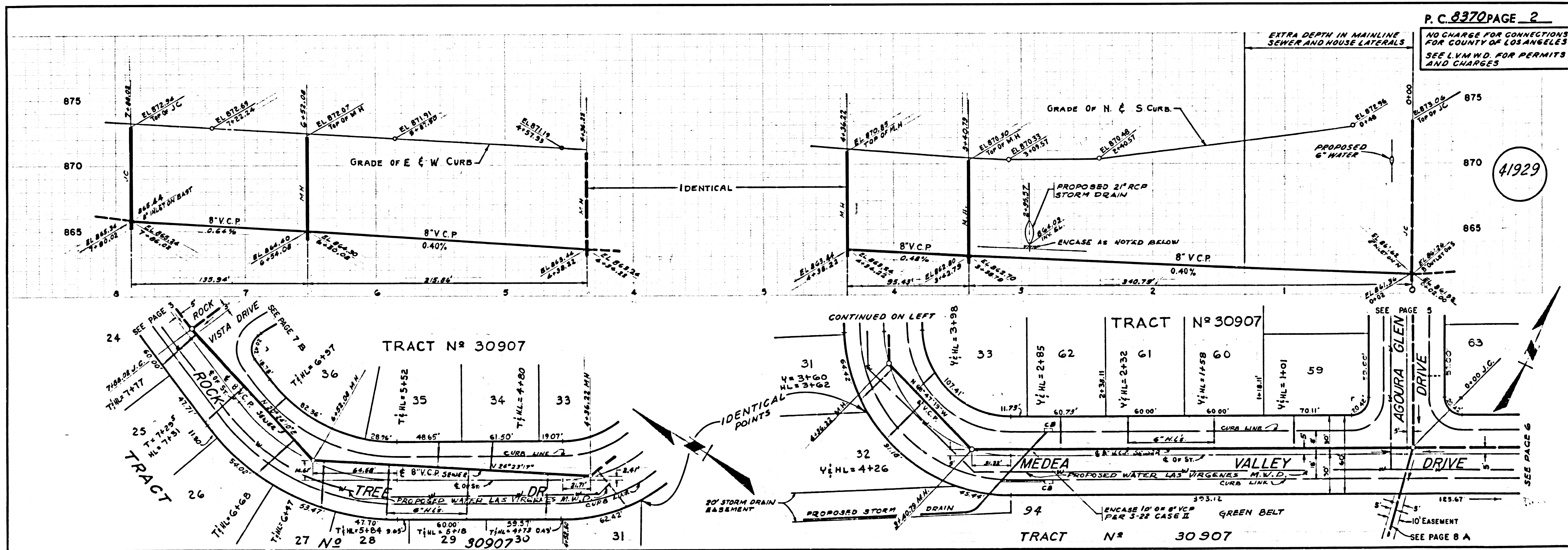
NOTE:
 GRADES TO WHICH THIS IMPROVEMENT IS TO BE CONSTRUCTED ARE SHOWN ON PLANS AND PROFILES. GRADE POINTS FOR TOP OF CURB, CENTER LINE OF STREETS, OR CENTER LINE OF ALLEYS ARE SHOWN BY CIRCLES ON PROFILES AT ALL POINTS BETWEEN DESIGNATED POINTS. THE GRADE SHALL BE ESTABLISHED SO AS TO CONFORM TO A STRAIGHT LINE DRAWN BETWEEN SAID DESIGNATED POINTS. ELEVATIONS ARE IN FEET ABOVE U.S.C. & G.S. MEAN LEVEL DATUM OF 1929.
 WORK SHALL BE CONSTRUCTED ACCORDING TO THE STANDARD SPECIFICATIONS FOR PUBLIC WORKS CONSTRUCTION AND SPECIAL PROVISIONS FOR THE CONSTRUCTION OF SANITARY SEWERS DATED JAN. 2, 1968 AS REVISOR, AND SHALL BE PROSECUTED ONLY IN THE PRESENCE OF THE COUNTY ENGINEER.
 BEFORE WORK CAN BE STARTED, THE CONTRACTOR MUST OBTAIN A PERMIT TO EXCAVATE IN COUNTY STREETS FROM THE E. A. COUNTY ROAD DEPT., DISTRICT OFFICE NO. 1, 1111 N. GARDEN ST., AND PAY A FEE TO THE COUNTY ENGINEER, ROOM 328, COUNTY ENGINEERING BUILDING, 148 WEST SECOND STREET OF LOS ANGELES, CALIFORNIA. REGIONAL OFFICE, APPROPRIATE TO COVER THE COST OF CONSTRUCTION INSPECTION AND RECORD PLANS.
 APPROVAL OF THIS PLAN BY THE COUNTY OF LOS ANGELES DOES NOT CONSTITUTE A REPRESENTATION AS TO THE ACCURACY OF THE LOCATION OF OR THE EXISTENCE OR NON-EXISTENCE OF ANY UNDERGROUND UTILITY PIPE, OR STRUCTURE WITHIN THE LIMITS OF THE PROJECT. THIS NOTE APPLIES TO ALL PAGES.
 IF WORK IS TO BE DONE IN A STATE HIGHWAY, A PERMIT MUST BE OBTAINED FROM THE STATE OF CALIFORNIA, DIVISION OF HIGHWAY, 120 SOUTH BRIND STREET, LOS ANGELES, CALIFORNIA.

COUNTY OF LOS ANGELES, CALIFORNIA
 JOHN A. LAMBIE, COUNTY ENGINEER LAS VIRGENES MUNICIPAL WATER DIST.
 APPROVED BY: Sheldon E. Tull 1-23-70 APPROVED BY: John A. Lambie
 REGIONAL ENGINEER DATE GENERAL MGR. - CHIEF ENG. DATE
 4-29-70
 CHECKED BY: Sheldon E. Tull 1-23-70
 REG. C. E. NO. 14375



INDEX MAP
 SCALE 1"=600'
 P.C. 8370

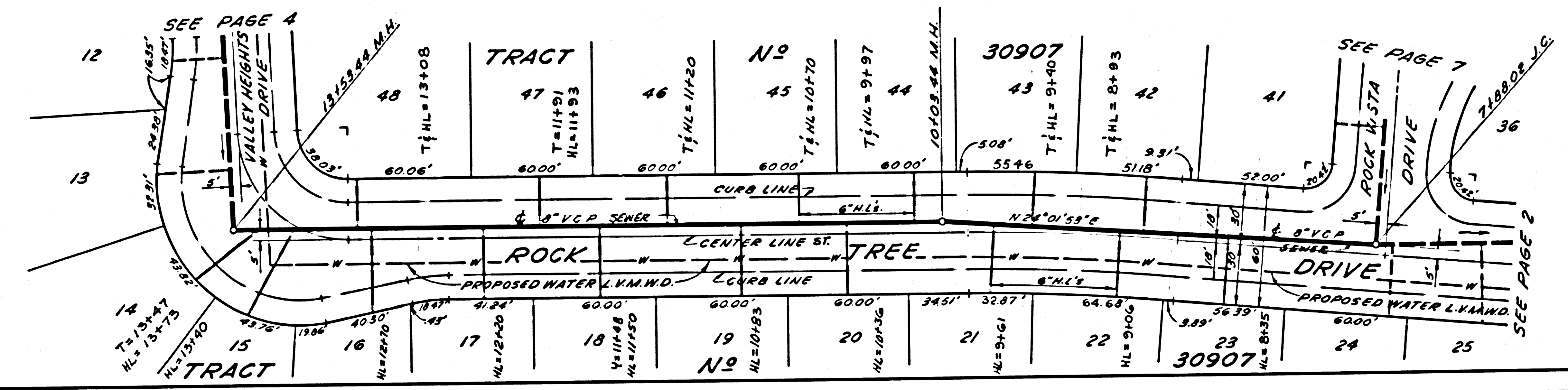
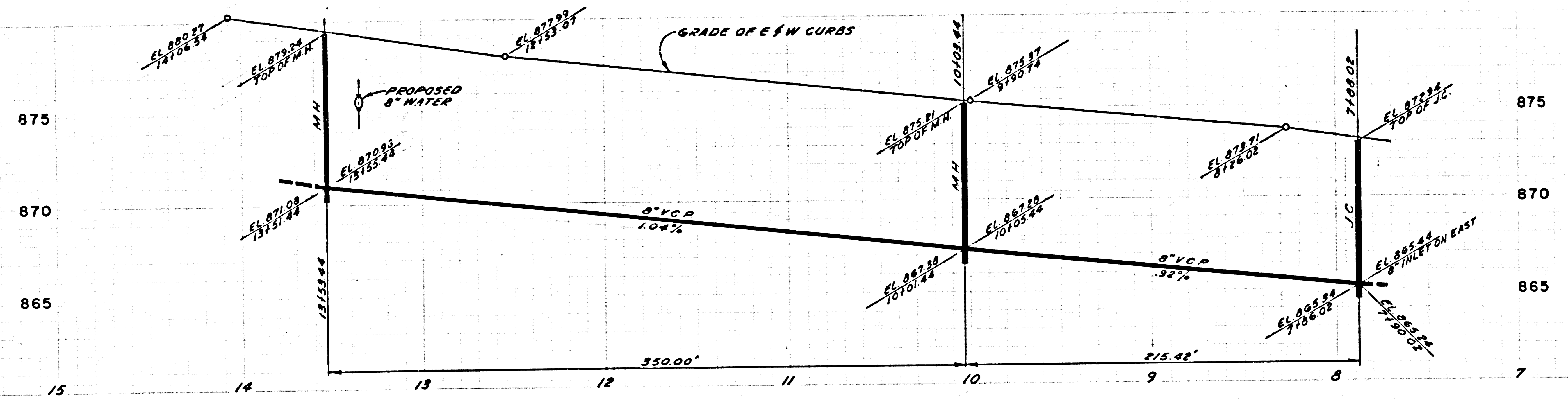
COLLECT CHARGES
 AS INDICATED



P. C. 8370 PAGE 2
 NO CHARGE FOR CONNECTIONS
 FOR COUNTY OF LOS ANGELES
 SEE L.V.M.W.D. FOR PERMITS
 AND CHARGES

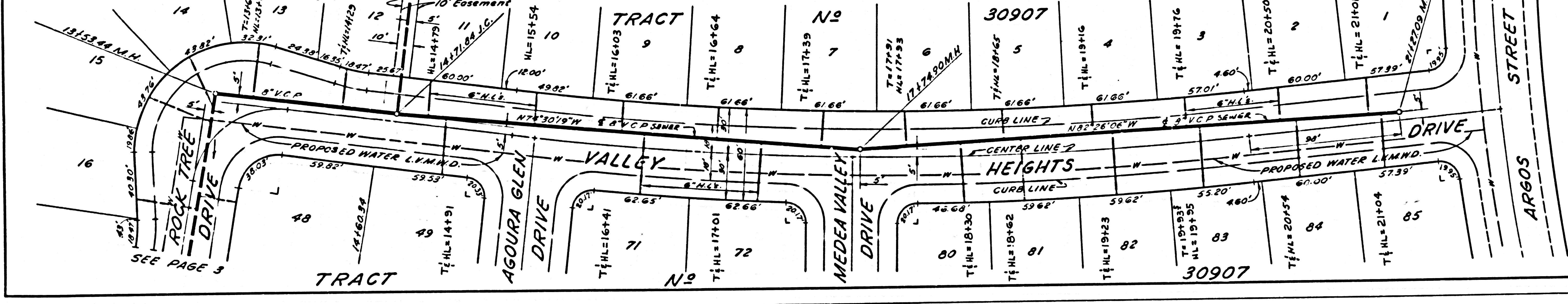
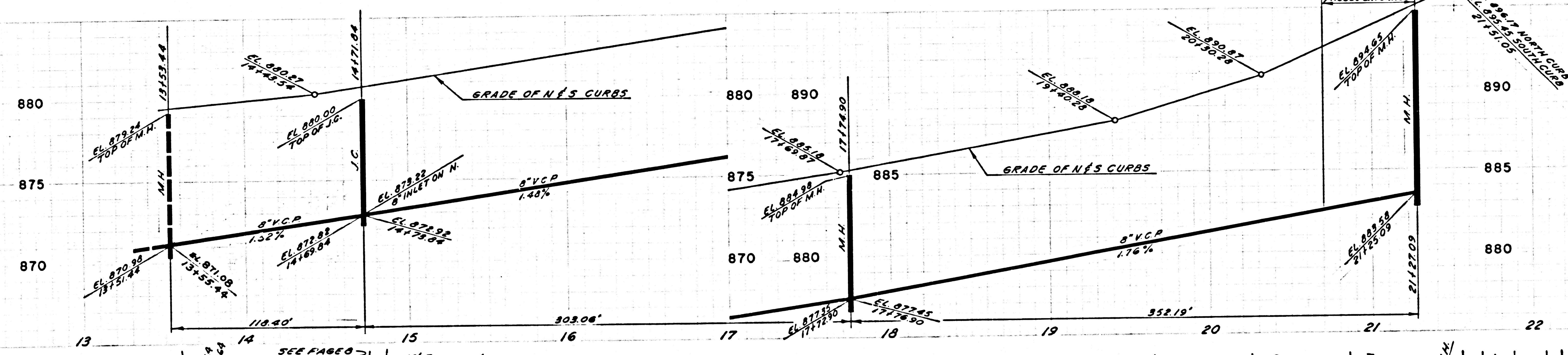
CUSTOMER APPROVAL DATE 9-23-69 REV
Sheldon E. Tull 3500-100-CD-42

NO CHARGE FOR CONNECTIONS FOR COUNTY OF LOS ANGELES SEE L.V.M.W.D. FOR PERMIT AND CHARGES



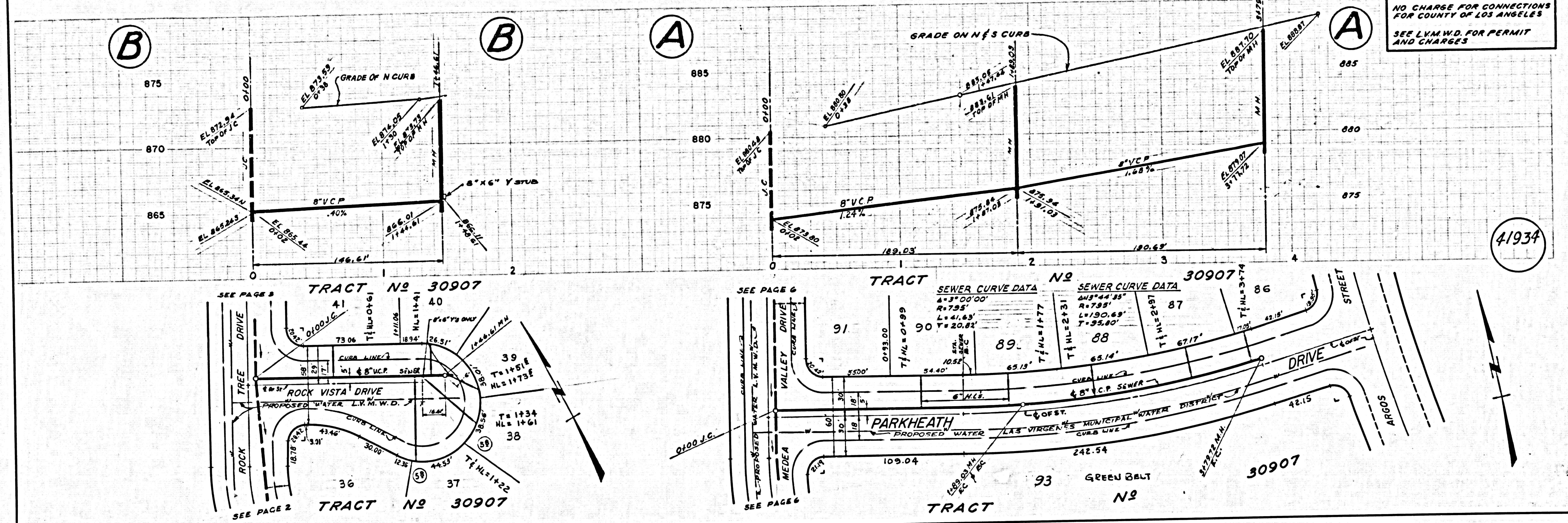
41930

NO CHARGE FOR CONNECTIONS FOR COUNTY OF LOS ANGELES SEE L.V.M.W.D. FOR PERMIT AND CHARGES



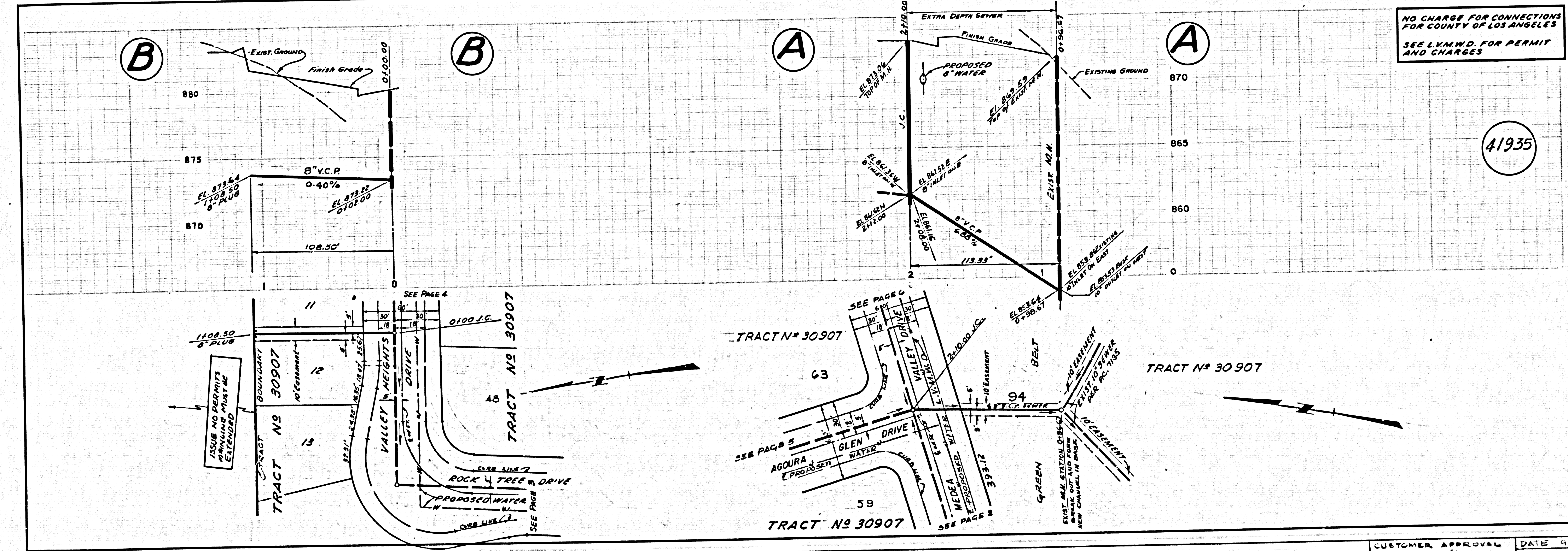
41931

NO CHARGE FOR CONNECTIONS FOR COUNTY OF LOS ANGELES
SEE L.V.M.W.D. FOR PERMIT AND CHARGES



41934

NO CHARGE FOR CONNECTIONS FOR COUNTY OF LOS ANGELES
SEE L.V.M.W.D. FOR PERMIT AND CHARGES



41935

B.M. BY 7552 ELEV. 824.107
 RDBM TAG 1 FT. N. BCR NE COR KANAN
 RD. & CANWOOD ST., 60 FT. N. & 40 FT.
 E. E. INT. 250 FT. N. BRIDGE 53-945
 OVER VENTURA FWY
 MALIBU QUAD. 1965

CHANGE OF PLAN No. 1

Relocate Main Line Sewer shown on page 8B.
 Relocate Main Line Sewer shown on page 4
 between Sta. 13153.48 and Sta. 17774.90
 Relocate Junction Chamber of Sta. 147104
 Revised Stationing on page 5.

By Harold E. Just R.C.E. 14375 4-9-70
 Gerald C. Tull Date
 Approved Samuel J. Dillan R.C.E. 11026 8-6-70
 Office of the Co. Engr. Date

CALABASAS BLDG. DIST. NO. 9.1

- NOTE:
- HOUSE LATERALS TO BE CONSTRUCTED WITH INVERTS AT PROPERTY LINE 6 FEET BELOW CURB GRADE EXCEPT AS NOTED.
 - PROPOSED STAKES ON THE PROPERTY LINE OR PROPERTY LINES PRODUCED AT RIGHT ANGLES TO THE SEWER LINE AT THE CENTER LINE OF EACH MANHOLE.
 - NO REPRESENTATIVE OF THE COUNTY ENGINEER WILL SURVEY OR LAY OUT ANY PORTION OF THE WORK.
 - THE PRIVATE ENGINEER SHALL FURNISH THE COUNTY ENGINEER WITH GRADE SHEETS AND STATIONING FOR ALL HOUSE LATERALS AND "T" OR "T" BRANCHES AND SHALL PROVIDE STAKES FOR THEM AT THEIR PROPER LOCATIONS WITH STATIONING PLAINLY MARKED. ALL HOUSE LATERALS SHALL BE CONSTRUCTED BY A STRAIGHT ALIGNMENT AT RIGHT ANGLES FROM THE MAIN LINE SEWER EXCEPT AS SHOWN ON THE PLANS. HOUSE LATERALS FROM CHIMNEYS SHALL NOT HAVE AN ANGLE OF LESS THAN 45° WITH THE MAIN LINE SEWER. ANY CHANGE IN ALIGNMENT SHALL BE REQUESTED IN WRITING BY THE PRIVATE ENGINEER.
 - THE PRIVATE ENGINEER SHALL FURNISH THE HOUSE LATERAL DEPTH AT THE PROPERTY LINE BELOW THE TOP OF CURB ELEVATION FOR EACH HOUSE LATERAL ON THE GRADE SHEET.
 - NO REVISIONS SHALL BE MADE IN THESE PLANS WITHOUT THE APPROVAL OF THE COUNTY ENGINEER.
 - THE CONTRACTOR SHALL NOTIFY THE CONSTRUCTION DIVISION BY TELEPHONE, MAINROOM 9-8747, EXT. 8128, AT LEAST TWENTY-FOUR HOURS BEFORE STARTING ANY WORK UNDER THIS CONTRACT.
 - ALL STRUCTURES SHALL BE EITHER BRICK MANHOLES PER S-3 OR PRECAST CONCRETE MANHOLES PER S-5 OR S-6, EXCEPT AS NOTED.
 - "T" OR "T" BRANCHES MAY BE USED FOR CONNECTIONS TO MAINLINE SEWERS EXCEPT AS NOTED.
 - MANHOLE TOPS IN UNIMPROVED RIGHTS OF WAY TO BE 24 INCHES ABOVE FINISHED GRADE.
 - SEE EARTH STRENGTH FOR ALL PIPES IN STANDARD DEPTH EXCEPT AS NOTED.
 - VERTICAL CLAY PIPE JOINTS SHALL BE TYPE "T", "F", OR "D" PER STANDARD SPECIFICATIONS SECTION 506.2.
 - IF A POWER POLE IS WITHIN THREE FEET OF THE SEWER, THE SEWER SHALL BE ENCASED, PER S-25, TWO FEET ON EACH SIDE FROM THE POINT OF INTERFERENCE.
 - IF DURING THE COURSE OF CONSTRUCTION IT IS DETERMINED THAT THERE IS LESS THAN FOUR FEET OF COVER OVER THE TOP OF A MAIN LINE OR HOUSE LATERAL V.C.P. SEWER WHICH IS NOT INDICATED ON THE PLANS, THE PIPE SHALL BE ENCASED PER S-25, UNLESS OTHERWISE APPROVED BY THE COUNTY ENGINEER.
 - RESURFACE ALL TRENCHES WITHIN PAVED AREAS TO MEET L.A. COUNTY ROAD DEPT. OR CALIFORNIA STATE HIGHWAY REQUIREMENTS IN ACCORDANCE WITH PERMITS.
 - SEWERS TO BE TESTED FOR LEAKAGE BY AIR TEST METHOD PER SEC. 304-2.37.C OF THE STANDARD SPECS.
 - REFER TO SECTION 7-1.6.1 OF THE STANDARD SPECIFICATIONS, REGARDING SAFETY ORDERS.
 - ALL JOINTS BETWEEN CLAY PIPE AND VITRIFIED CLAY PIPE SHALL BE MADE WITH A RUBBER SLAVE JOINT, TYPE "C" OR "D", FIFTH EDITION IF NECESSARY PER STANDARD SPECIFICATIONS, SECTION 506.2.
 - PIPELINES TO BE SHOWN AND SHOWN BY HOUSE LATERALS INDICATE DEPTH BELOW CURB GRADE. THE FOLLOWING LATEST REVISED STANDARD PLANS ON FILE IN THE OFFICE OF THE COUNTY ENGINEER SHALL APPLY IN THE CONSTRUCTION OF THIS PROJECT:

LEADERS	S-1
MINIMUM PUBLIC SAFETY REQUIREMENTS	S-2
BRICK MANHOLE	S-3
NON-REINFORCED PRECAST CONCRETE MANHOLE	S-4
REINFORCED PRECAST CONCRETE MANHOLE	S-5
MANHOLE FRAME AND COVER	S-6
STANDARD MANHOLE STEPS	S-7
BEDDING FOR SEWER PIPE	S-8
CHASING AND ENCASUREMENT	S-9
WYS ON THE SURFACE	S-10
ALLOWABLE TRENCH WIDTHS	S-11
SPECIAL SUPPORT AND PROTECTION	S-12

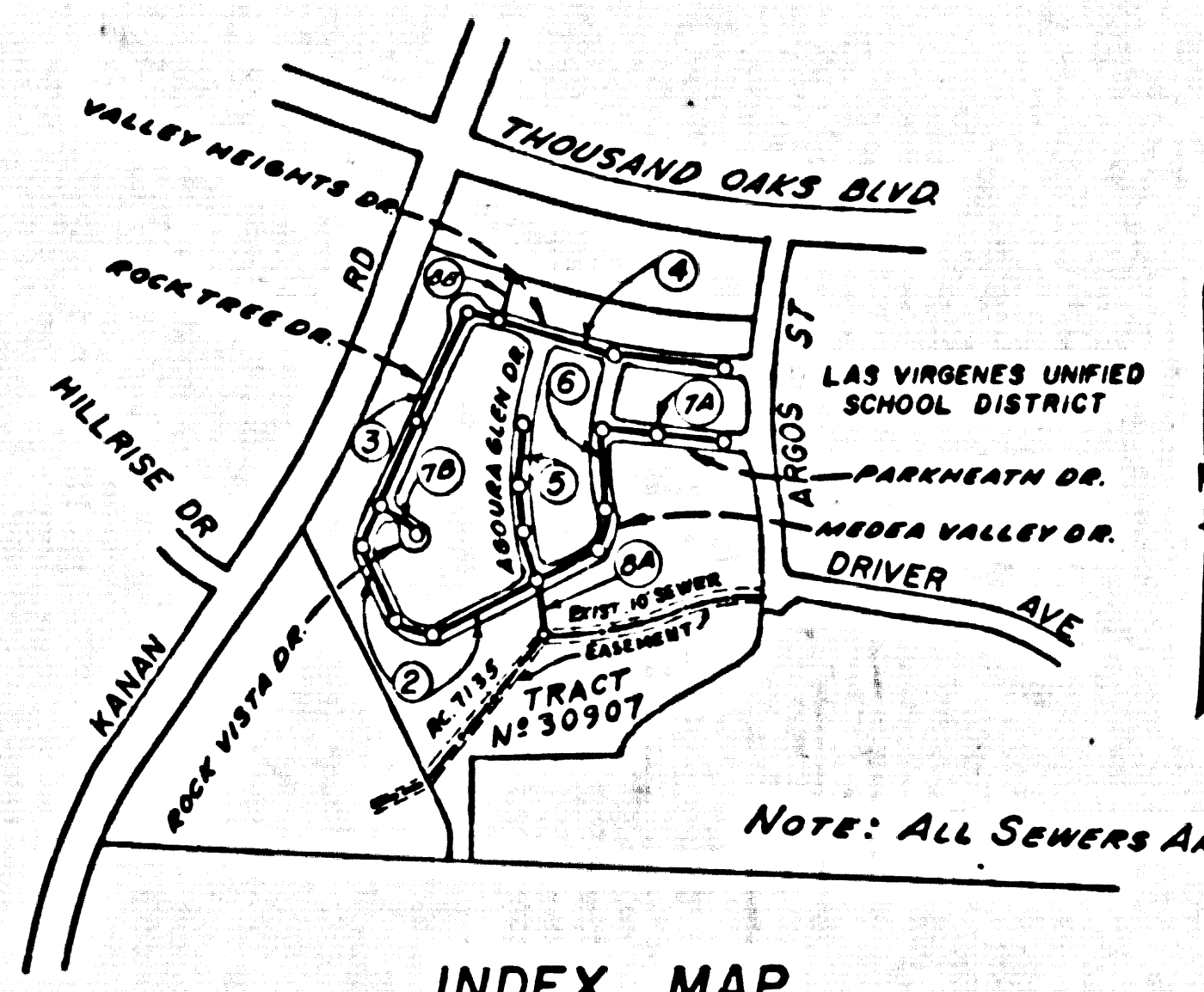
PROFILE, ALIGNMENT AND GRADE OF
SANITARY SEWERS P.C. 8370
 TO BE CONSTRUCTED IN PAGE 1
 TRACT N° 30907

PRIVATE CONTRACT NO. 8370

W.S. 90
 4 SHEETS; 8 PAGES
 SCALE: HORIZ. 1"=40' VERT. 1"=4'
 SEPTEMBER, 1969
 PREPARED IN THE OFFICES OF
CF BRAUN & CO ENGINEERS
 ALHAMBRA CALIFORNIA
 By Harold E. Just
 REG. C. E. NO. 14375

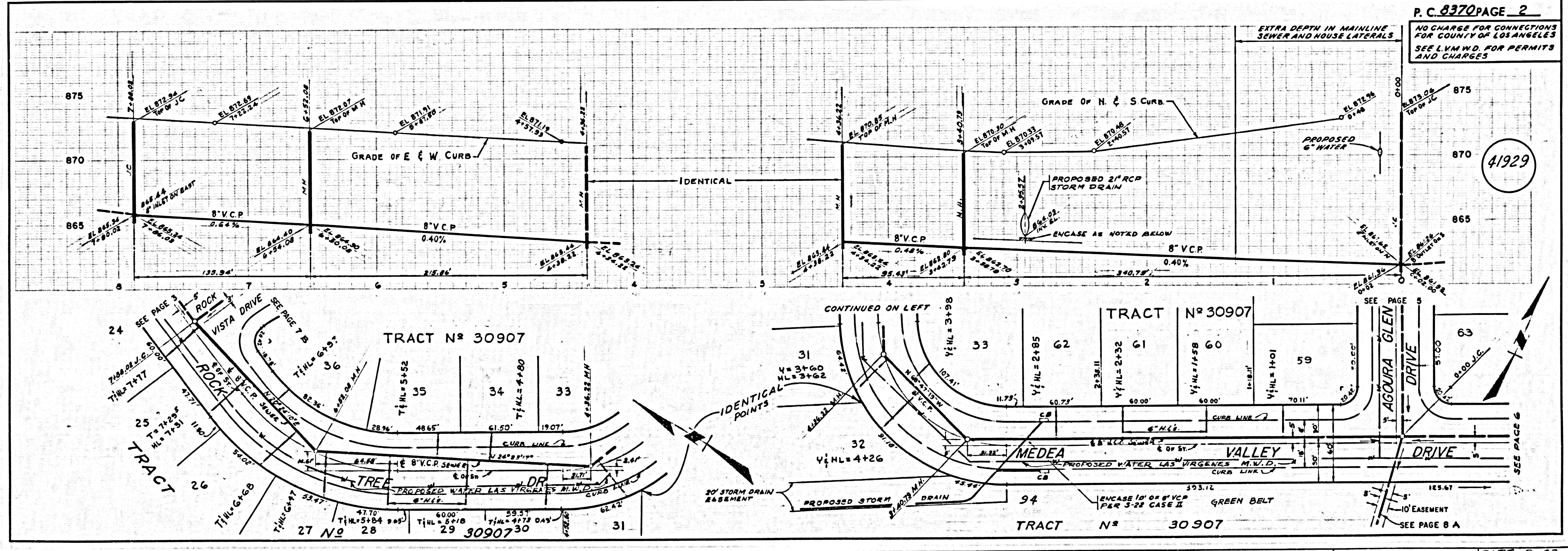
NOTE:
 GRADES TO WHICH THE IMPROVEMENT IS TO BE CONSTRUCTED ARE SHOWN ON PLANS AND PROFILES. GRADE POINTS FOR TOP OF CURBS, CENTER LINE OF STREETS, OR CENTER LINE OF ALLEYS ARE SHOWN BY CIRCLES ON PROFILES. ALL POINTS BETWEEN DESIGNATED POINTS THE GRADE SHALL BE ESTABLISHED SO AS TO CONFORM TO A STRAIGHT LINE DRAWN BETWEEN SAID DESIGNATED POINTS. ELEVATIONS ARE IN FEET ABOVE U.S. & G.S. SEA LEVEL DATUM OF 1929.
 WORK SHALL BE CONSTRUCTED ACCORDING TO THE STANDARD SPECIFICATIONS FOR PUBLIC WORKS CONSTRUCTION AND SPECIAL PROVISIONS FOR THE CONSTRUCTION OF SANITARY SEWERS DATED JANUARY, 1965 AS REVISED, AND SHALL BE PROSECUTED ON THE PRESENCE OF THE COUNTY ENGINEER.
 BEFORE WORK CAN BE STARTED, THE CONTRACTOR MUST OBTAIN A PERMIT TO EXCAVATE IN COUNTY STREETS FROM THE L.A. COUNTY ROAD DEPT., DISTRICT OFFICE NO. 1000 AND PAY A FEE TO THE COUNTY ENGINEER, ROOM 326, COUNTY ENGINEERING BUILDING, 100 WEST SECOND STREET OR MARLBOROUGH REGIONAL OFFICE, SUPERVISOR TO COVER THE COST OF CONSTRUCTION INSPECTION AND RECORD PLANS.
 APPROVAL OF THIS PLAN BY THE COUNTY OF LOS ANGELES DOES NOT CONSTITUTE A REPRESENTATION AS TO THE ACCURACY OF THE LOCATION OF OR THE EXISTENCE OR NON-EXISTENCE OF ANY UNDERGROUND UTILITY PIPE, OR STRUCTURE WITHIN THE LIMITS OF THIS PROJECT. THIS NOTE APPLIES TO ALL PAGES.
 IF WORK IS TO BE DONE IN A STATE HIGHWAY, A PERMIT MUST BE OBTAINED FROM THE STATE OF CALIFORNIA, DIVISION OF HIGHWAYS, 120 SOUTH SPRING STREET, LOS ANGELES, CALIFORNIA.

COUNTY OF LOS ANGELES, CALIFORNIA
 JOHN A. LAMMIE, COUNTY ENGINEER LAS VIRGENES MUNICIPAL WATER DIST.
 APPROVED BY Samuel J. Dillan 1-23-70 REGIONAL ENGINEER DATE 4-24-70
 CHECKED BY Harold E. Just 1-23-70 DATE
 REG. C. E. NO. 14375



INDEX MAP
 SCALE 1"=600'
 P.C. 8370

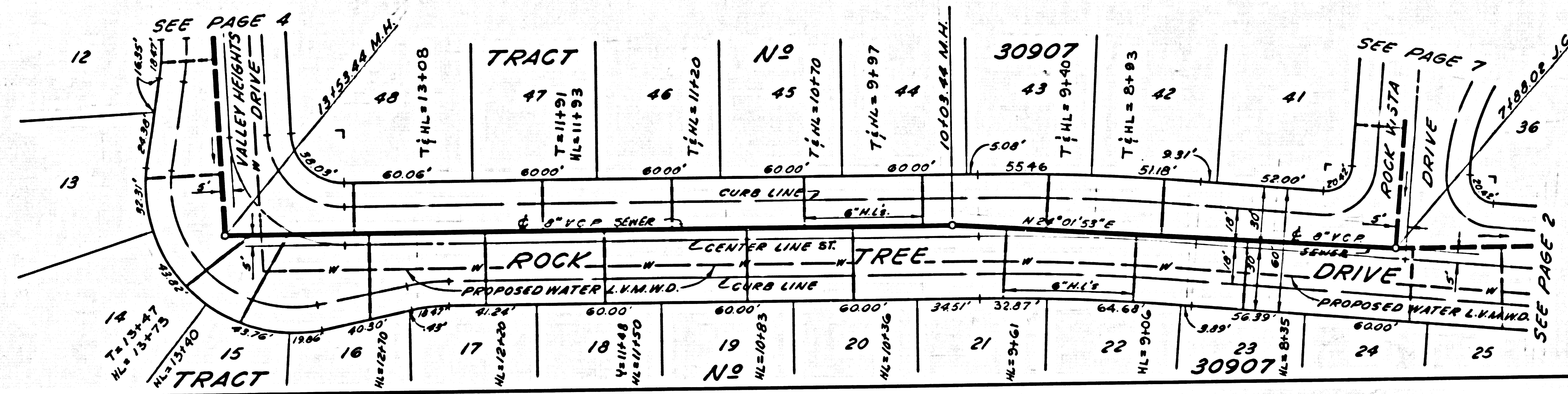
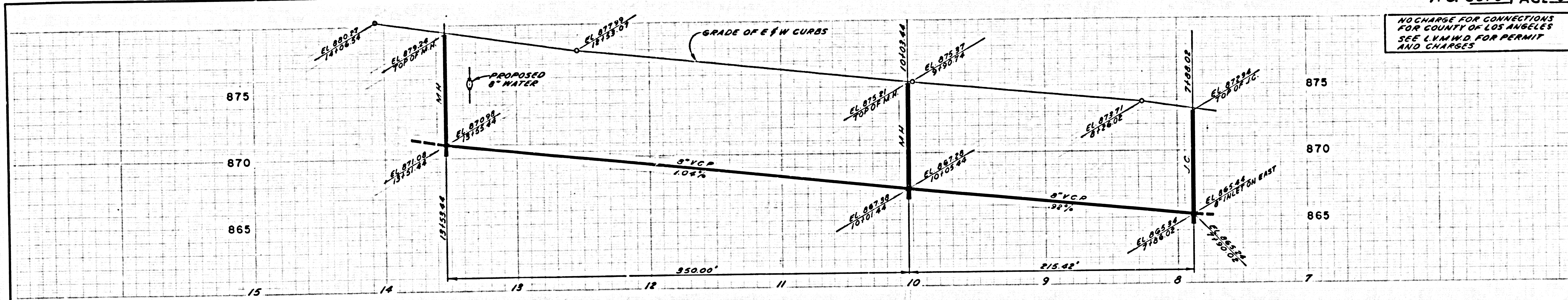
COLLECT CHARGES
 AS INDICATED



P. C. 8370 PAGE 2
 NO CHARGE FOR CONNECTIONS
 FOR COUNTY OF LOS ANGELES
 SEE L.V.M.W.D. FOR PERMITS
 AND CHARGES

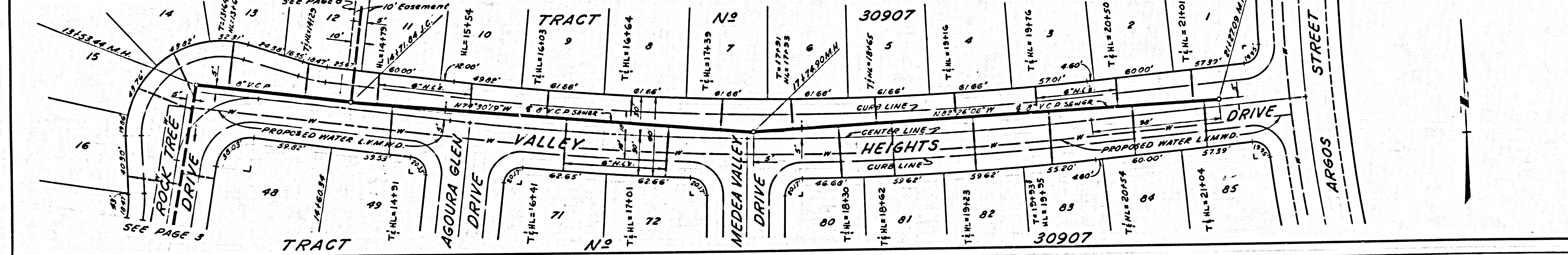
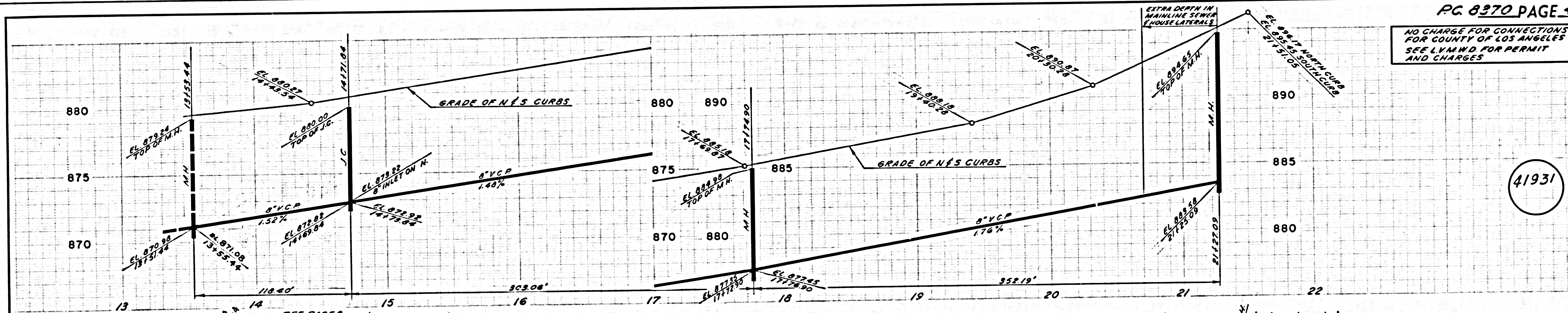
CUSTOMER APPROVAL DATE 9-23-69 REV
CLS 4/25/69 3500-100-CO-42 0

NO CHARGE FOR CONNECTIONS FOR COUNTY OF LOS ANGELES SEE L.V.M.W.D. FOR PERMIT AND CHARGES



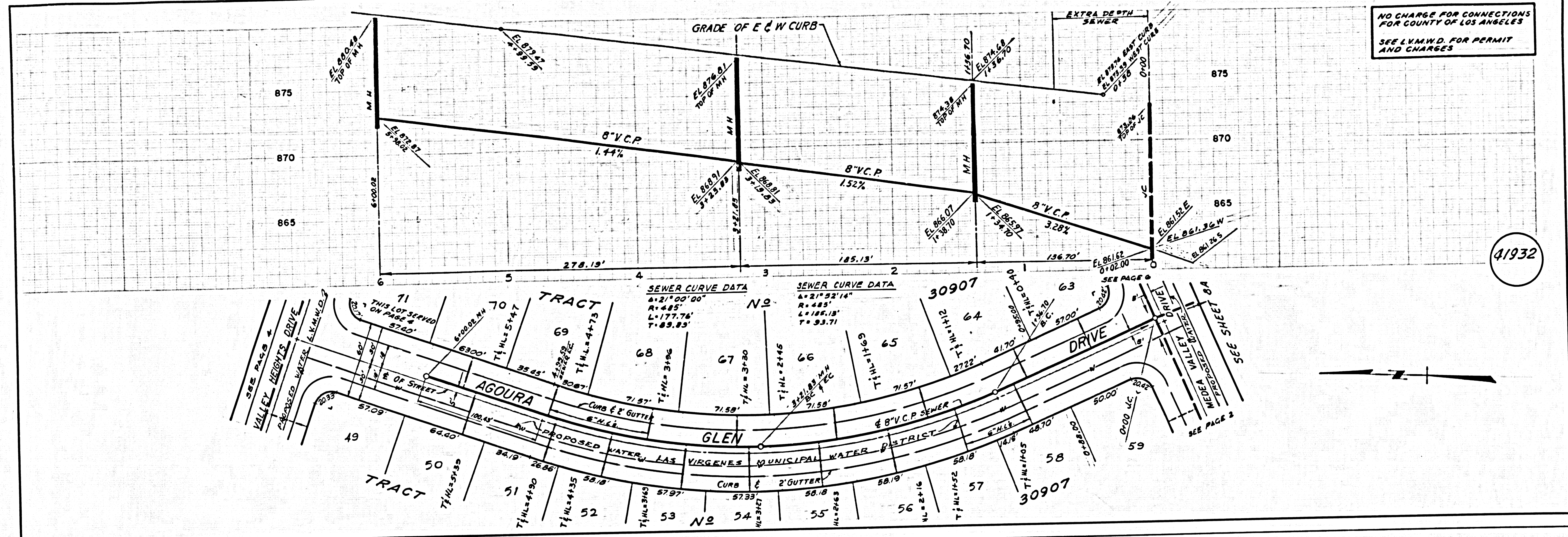
41930

NO CHARGE FOR CONNECTIONS FOR COUNTY OF LOS ANGELES SEE L.V.M.W.D. FOR PERMIT AND CHARGES



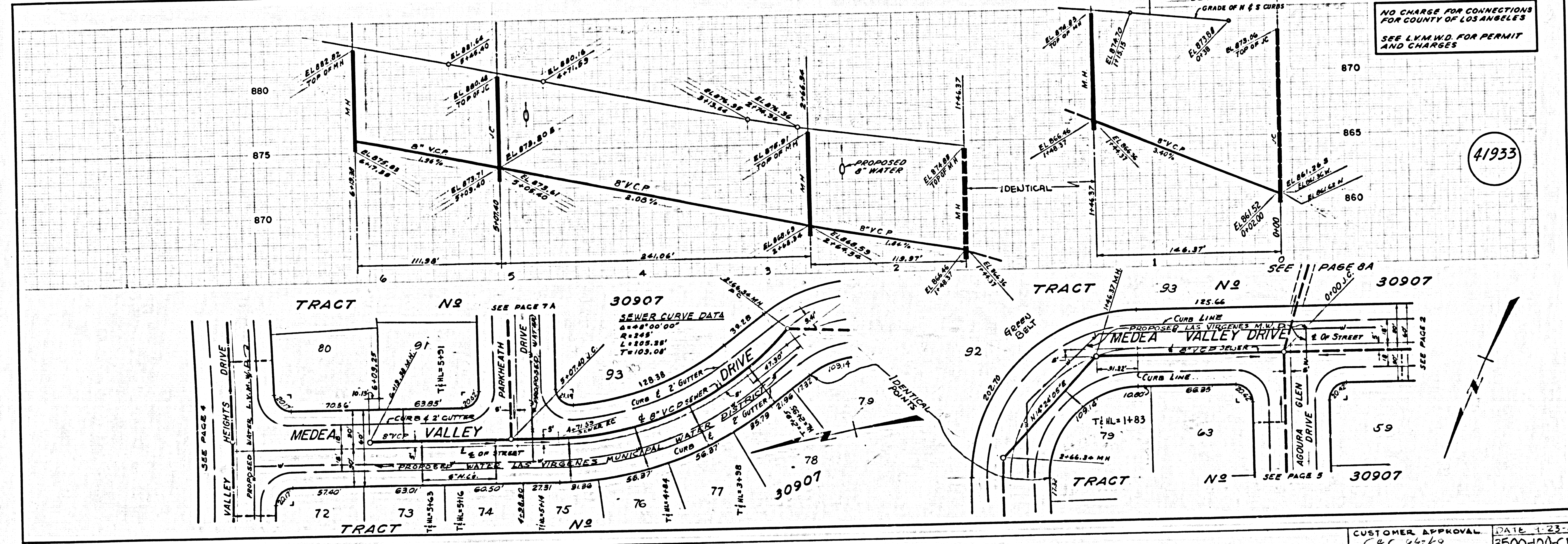
41931

NO CHARGE FOR CONNECTIONS FOR COUNTY OF LOS ANGELES
SEE L.V.M.W.D. FOR PERMIT AND CHARGES



41932

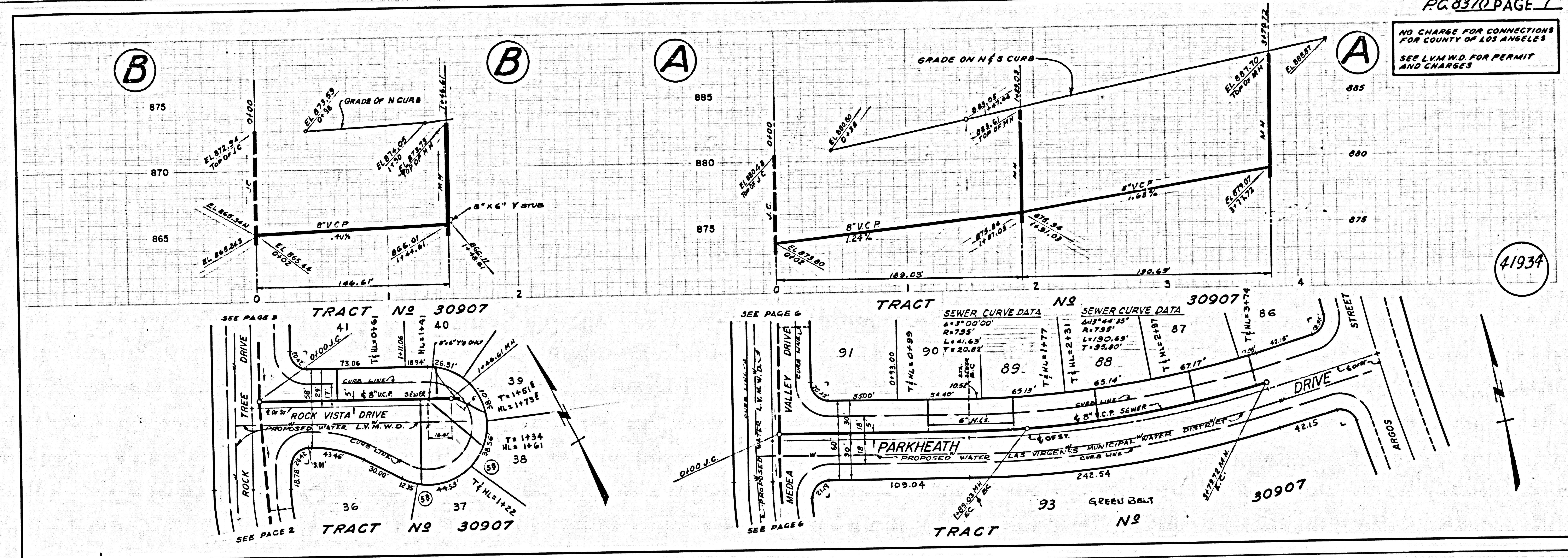
NO CHARGE FOR CONNECTIONS FOR COUNTY OF LOS ANGELES
SEE L.V.M.W.D. FOR PERMIT AND CHARGES



41933

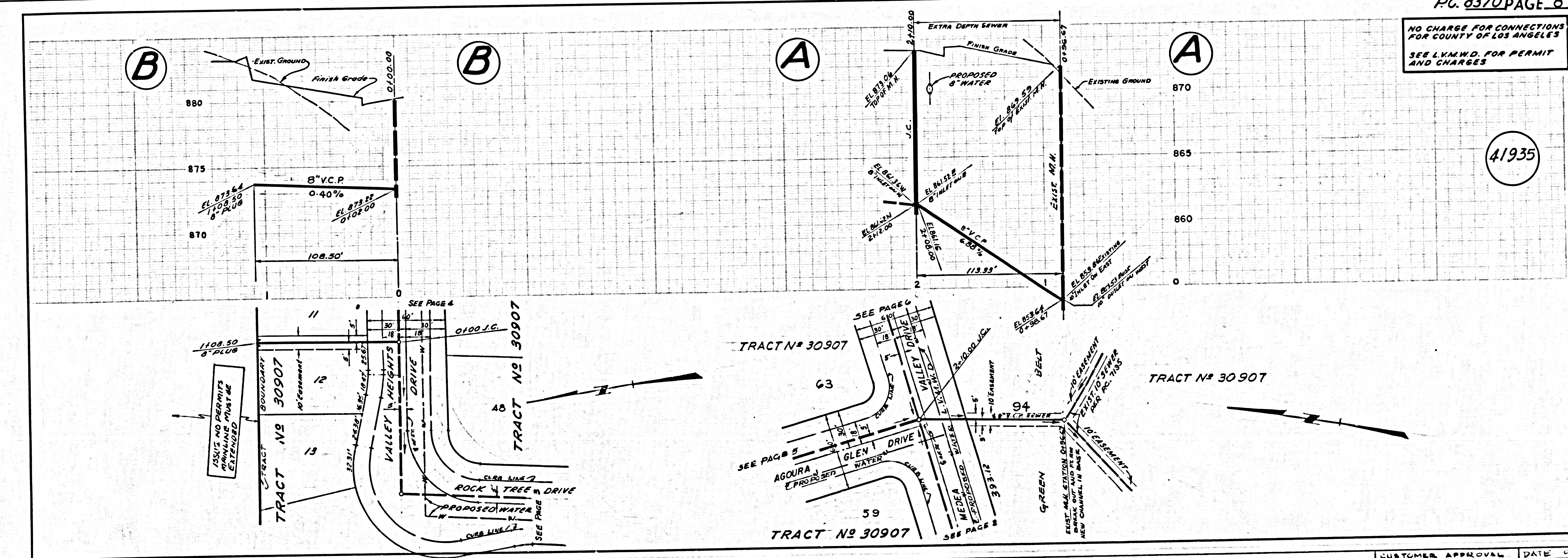
CUSTOMER APPROVAL: [Signature] DATE: 1-23-69 REV: 0
3500-100-CD-44 0

NO CHARGE FOR CONNECTIONS FOR COUNTY OF LOS ANGELES
SEE L.V.M.W.D. FOR PERMIT AND CHARGES



41934

NO CHARGE FOR CONNECTIONS FOR COUNTY OF LOS ANGELES
SEE L.V.M.W.D. FOR PERMIT AND CHARGES



41935

CUSTOMER APPROVAL: *[Signature]* DATE: 4-23-69
3500-100-CD-45