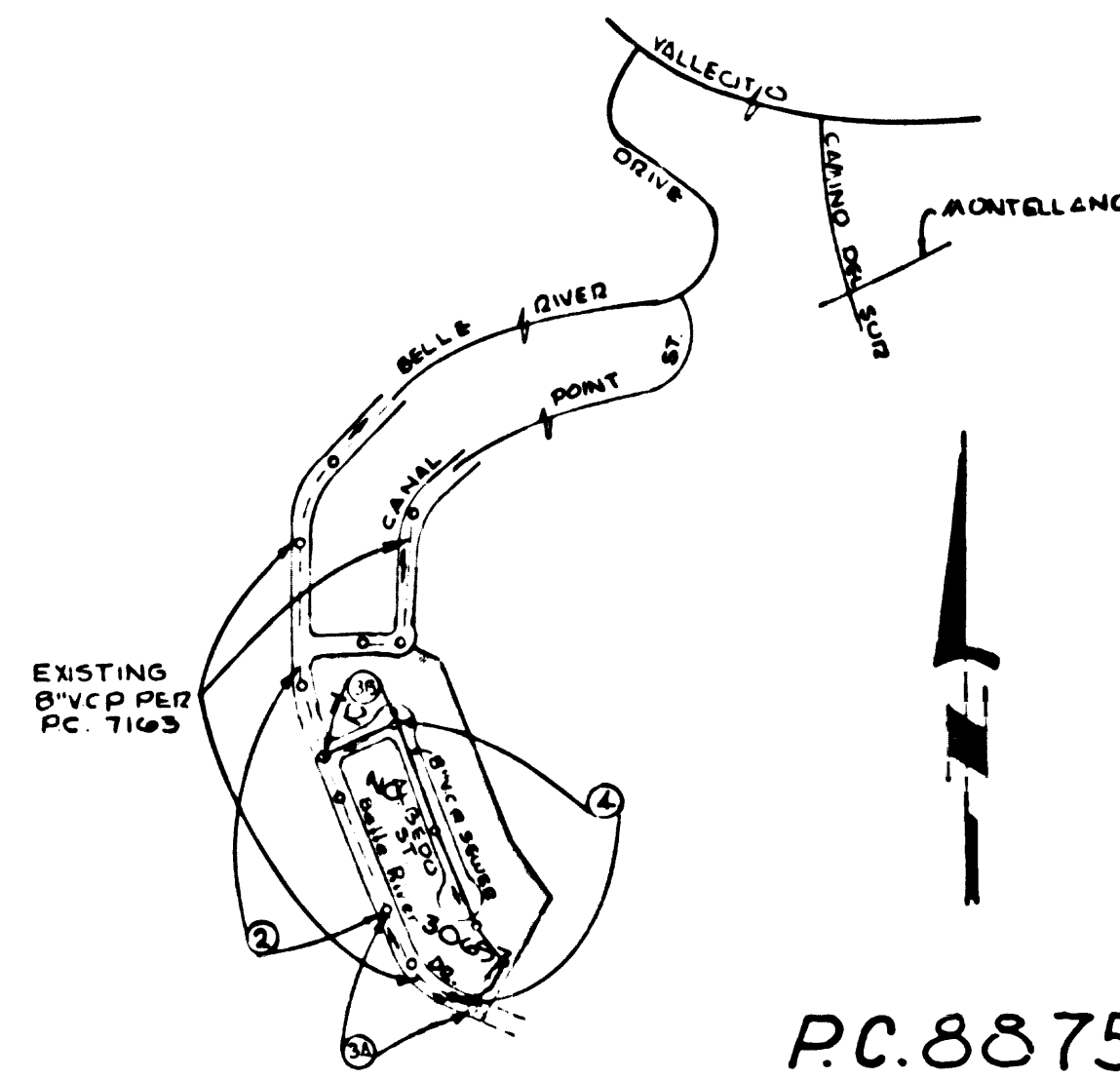


B.M. 86 1611 ELEV. 574.273  
 ROOM 740 1 FT. S OF END CONC. RET. WALL  
 AROUND HOUSE NO 1560 LOS ALTOS DRIVE  
 31 FT. S E + 800 FT. E. LA CUESTA AVE.  
 WHITTIER, QUAD. 1970



PC.8875  
 INDEX MAP  
 TRACT 30697  
 SCALE: 1"=600'

COUNTY ENGINEER'S OFFICE SHALL BE NOTIFIED BY THE CONTRACTOR AT LEAST 10 DAYS PRIOR TO THE DATE THAT REQUIRED BY THE COUNTY ENGINEER TO BE MAILED THROUGH THE COUNTY ENGINEER'S OFFICE.

NO CONNECTION FOR THE PROPOSED CONSTRUCTION SHALL BE MADE WITH ANY EXISTING UTILITY UNLESS THE CONTRACTOR HAS BEEN ADVISED BY THE COUNTY ENGINEER'S OFFICE THAT SUCH CONNECTION IS NECESSARY.

**GENERAL NOTES:**

1. ELEVATIONS ARE IN FEET ABOVE U.S.C. & G.S. SEA LEVEL DATUM OF 1929.
2. NO REVISIONS SHALL BE MADE IN THESE PLANS WITHOUT THE APPROVAL OF THE COUNTY ENGINEER.
3. NO REPRESENTATIVE OF THE COUNTY ENGINEER WILL SURVEY OR LAY OUT ANY PORTION OF THE WORK.
4. GRADES TO WHICH THIS IMPROVEMENT IS TO BE CONSTRUCTED ARE SHOWN ON PLANS AND PROFILES. GRADE POINTS FOR TOP OF CURBS, CENTER LINE OF STREETS, OR OTHER LINE OF ADJUST LIFE SHOWN BY CHECKS ON PROFILES. AT ALL POINTS BETWEEN DESIGNATED POINTS THE GRADE SHALL BE ESTABLISHED SO AS TO CONFORM TO A STRAIGHT LINE DRAWN BETWEEN SAID DESIGNATED POINTS.
5. THE PRIVATE ENGINEER SHALL FURNISH THE COUNTY ENGINEER WITH GRADE SHEETS AND STATIONING FOR ALL HOUSE LATERALS AND "T" OR "Y" BRANCHES AND SHALL PROVIDE STATIONING FOR THEM AT THEIR PROPER LOCATIONS WITH STATISTICAL PLANTS. BRANCHED HOUSE LATERALS SHALL BE CONSTRUCTED ON A STRAIGHT ALIGNMENT AT RIGHT ANGLES FROM THE MAIN LINE SEWER EXCEPT AS SHOWN ON THE PLANS. HOUSE LATERALS FROM CHIMNEYS SHALL NOT HAVE AN ANGLE OF LESS THAN 45° WITH THE MAIN LINE SEWER. ANY CHANGE IN ALIGNMENT SHALL BE REQUESTED IN WRITING BY THE PRIVATE ENGINEER.
6. THE PRIVATE ENGINEER SHALL FURNISH THE HOUSE LATERAL DEPTH AT THE PROPERTY LINE BELOW THE TOP OF CURB ELEVATION FOR EACH HOUSE LATERAL ON THE GRADE SHEET.
7. BEFORE WORK CAN BE STARTED, THE CONTRACTOR MUST OBTAIN A PERMIT TO EXCAVATE IN COUNTY STREETS FROM THE L.A. COUNTY ROAD DEPT., DISTRICT OFFICE NO. 1, AND PAY A FEE TO THE COUNTY ENGINEER, 800 S. BRUNNEN ST., DISTRICT OFFICE TO COVER THE COST OF CONSTRUCTION INSPECTION AND RECORD PLANS.
8. IF WORK IS TO BE DONE IN A STATE HIGHWAY, A PERMIT MUST BE OBTAINED FROM THE STATE OF CALIFORNIA, DIVISION OF HIGHWAYS, 120 SOUTH SPRING STREET, LOS ANGELES, CALIFORNIA.
9. APPROVAL OF THIS PLAN BY THE COUNTY OF LOS ANGELES DOES NOT CONSTITUTE A REPRESENTATION AS TO THE ACCURACY OF THE LOCATION OF OR THE EXISTENCE OR NON-EXISTENCE OF ANY UNDERGROUND UTILITY PIPE, OR STRUCTURE, WITHIN THE LIMITS OF THIS PROJECT. THIS NOTE APPLIES TO ALL PAGES.
10. REFER TO SECTION 718.41 OF THE STANDARD SPECIFICATIONS, HIGHWAY DEPARTMENT.
11. PRIOR TO THE ISSUANCE OF THE REQUIRED SEWER CONSTRUCTION PERMIT BY THE COUNTY ENGINEER, THE CONTRACTOR SHALL OBTAIN A PERMIT TO EXCAVATE FROM THE STATE OF CALIFORNIA, DIVISION OF INDUSTRIAL SAFETY.

**CONSTRUCTION NOTES:**

1. WITHIN THE CITY OF LOS ANGELES, THE STANDARD SPECIFICATIONS FOR PUBLIC WORKS CONSTRUCTION (1978 EDITION) WITH THE SUPPLEMENT AND COUNTY ENGINEER SPECIAL PROVISIONS FOR THE CONSTRUCTION OF SANITARY SEWERS DATED JANUARY 2, 1979, SHALL BE OBSERVED AND SHALL BE PROSECUTED ONLY IN THE PRESENCE OF THE COUNTY ENGINEER.
2. THE CONTRACTOR SHALL NOTIFY THE CONSTRUCTION DIVISION BY TELEPHONE (213) 971-5288 AT LEAST TWENTY-FOUR HOURS BEFORE STARTING ANY WORK UNDER THIS CONTRACT.
3. HOUSE LATERALS TO BE CONSTRUCTED WITHIN THE CITY OF LOS ANGELES SHALL BE 8" DIA. 8" V.C.P. UNLESS OTHERWISE APPROVED BY THE COUNTY ENGINEER.
4. WYE OR TEE BRANCHES MAY BE USED FOR CONNECTIONS TO MAINLINE SEWERS EXCEPT AS NOTED.
5. ALL STRUCTURES SHALL BE EITHER BRICK MANHOLES PER S.D. OR PRECAST CONCRETE MANHOLES PER S.D. EXCEPT AS NOTED.
6. PROVIDE STAYS ON THE PROPERTY LINE OR PROPERTY LINES PROXIMATE AT RIGHT ANGLES TO THE SEWER LINE AT THE CENTER LINE OF EACH MANHOLE.
7. MANHOLES FORM IN UNIMPROVED AREAS OF WAY TO BE SIX INCHES ABOVE FINISHED GRADE.
8. VENTING CLAY PIPE JOINTS SHALL BE PER S.D. OR S.D. PER STANDARD SPECIFICATIONS SECTION 300.3.
9. IF A POWER POLE IS WITHIN THREE FEET OF THE SEWER, THE SEWER SHALL BE ENCASED PER S.D. CASE II. TWO FEET ON EACH SIDE FROM THE POINT OF INTERFERENCE.
10. IF DURING THE COURSE OF CONSTRUCTION IT IS DETERMINED THAT THERE IS LESS THAN FOUR FEET OF COVER OVER THE TOP OF A MAIN LINE OR HOUSE LATERAL 12" OR 18" WHICH IS NOT INDICATED ON THE PLANS, THE PIPE SHALL BE ENCASED PER S.D. CASE II UNLESS OTHERWISE APPROVED BY THE COUNTY ENGINEER.
11. ALL JOINTS BETWEEN CAST IRON PIPE AND VITRIFIED CLAY PIPE SHALL BE MADE WITH A RUBBER SHEET JOINT, TYPE "C" OR "B", WITHIN THE CITY OF LOS ANGELES. THE STANDARD SPECIFICATIONS AND SPECIAL PROVISIONS SHALL BE OBSERVED IN ACCORDANCE WITH THESE PLANS.
12. SEWERS TO BE TIED FOR BRANCH TO SECTION 306-97 OF THE STANDARD SPECIFICATIONS AND SPECIAL PROVISIONS IN ACCORDANCE WITH THESE PLANS.
13. RESURFACE ALL TRENCHES WITHIN PAVED AREAS TO MEET L.A. COUNTY ROAD DEPT. OR CALIFORNIA STATE HIGHWAY REQUIREMENTS IN ACCORDANCE WITH THESE PLANS.
14. FULL COMPLIANCE WITH SECTION 306-4.2 OF THE STANDARD SPECIFICATIONS SHALL BE REQUIRED FOR BACKFILL IN STREETS. CERTIFICATION OF BACKFILL CONTRACTOR AND SAID PRODUCE SHALL BE PROVIDED BY A QUALIFIED REGISTERED TESTING LABORATORY SHALL BE PROVIDED BY THE PERMITEE PRIOR TO THE ISSUANCE OF A CERTIFICATE OF PARTIAL ACCEPTANCE.

PROFILE, ALIGNMENT AND GRADE OF  
**SANITARY SEWERS** PAGE 1

TO BE CONSTRUCTED IN  
 TRACT NO. 30697  
 PRIVATE CONTRACT NO.8875

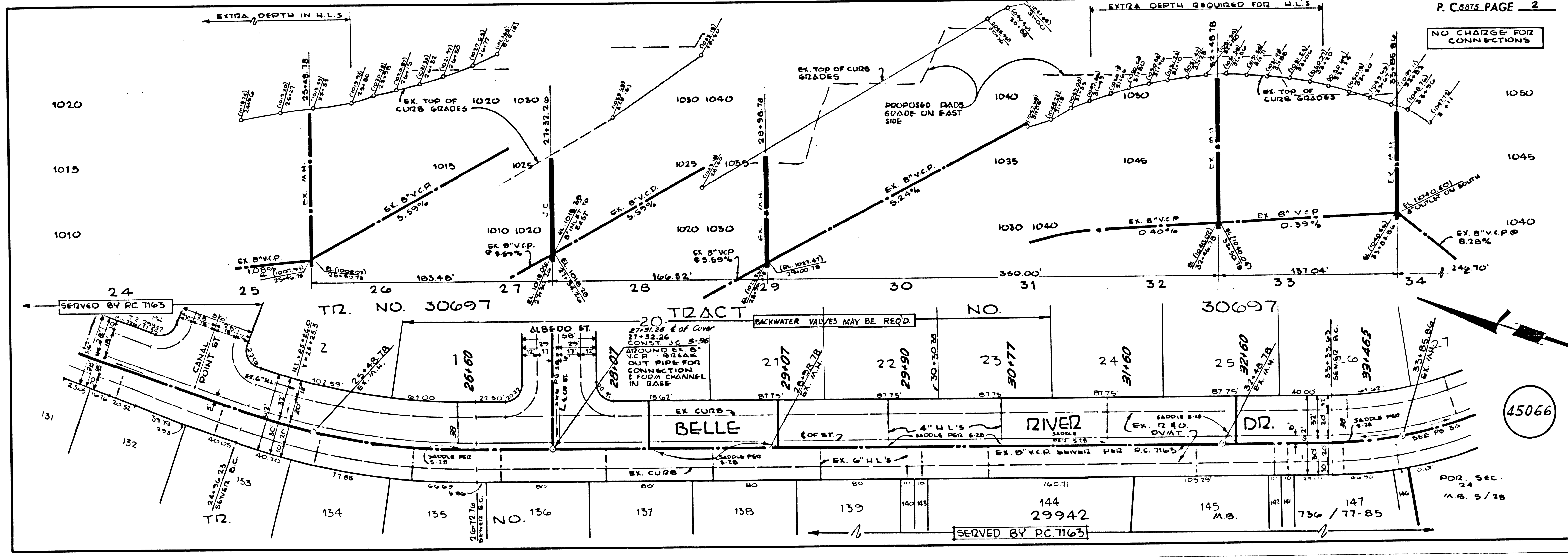
W.S. 37-E5  
 2 SHEETS, 4 PAGES  
 SCALE: VERT. 1"=4'  
 HORIZ. 1"=40' OCTOBER 1972  
 PREPARED IN THE OFFICES OF  
**KEMMERER ENGINEERING CO. INC.**  
 6705 S. PAINTER AVE., WHITTIER 9380791  
 BY: Robert R. Jones  
 REG. C.E. No. 11349

THE FOLLOWING LATEST REVISED STANDARD PLANS ON FILE IN THE OFFICE OF THE COUNTY ENGINEER SHALL APPLY IN THE CONSTRUCTION OF THIS PROJECT:

MINIMUM PUBLIC SAFETY REQUIREMENTS	1-1
BRICK MANHOLE	1-2
STANDARD MANHOLE STEP	1-3
BRICKS FOR SEWER PIPE	1-4
CHARLING AND INCASEMENT	1-5
WYE OF THE PIPE	1-6
ALUMINUM BRANCH WYING	1-7
LOCKING MANHOLE FRAME AND COVER	1-8
NON-REINFORCED PRECAST CONCRETE MANHOLE	1-9

COUNTY OF LOS ANGELES, CALIFORNIA  
 HARVEY T. BRADY, COUNTY ENGINEER JOHN D. PARKHURST, CHIEF ENGINEER  
 (S) LAND NO. 21  
 APPROVED: [Signature] APPROVED: [Signature]  
 SAN. DIV. ASST. CHIEF ENGINEER  
 CHECKED: Thomas E. Howard 11/20/74  
 REG. C.E. NO. 19156  
 LA PUENTE RIDG. DIST. 2.0 J.N. 02.50.02

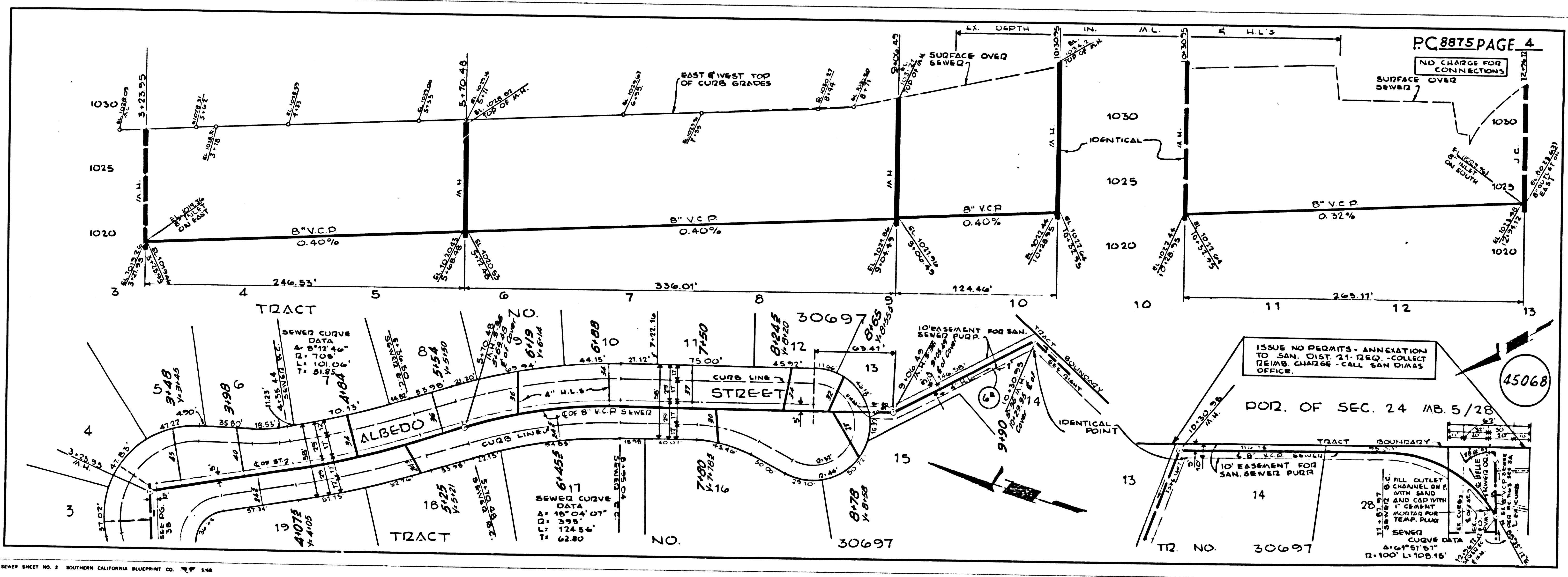
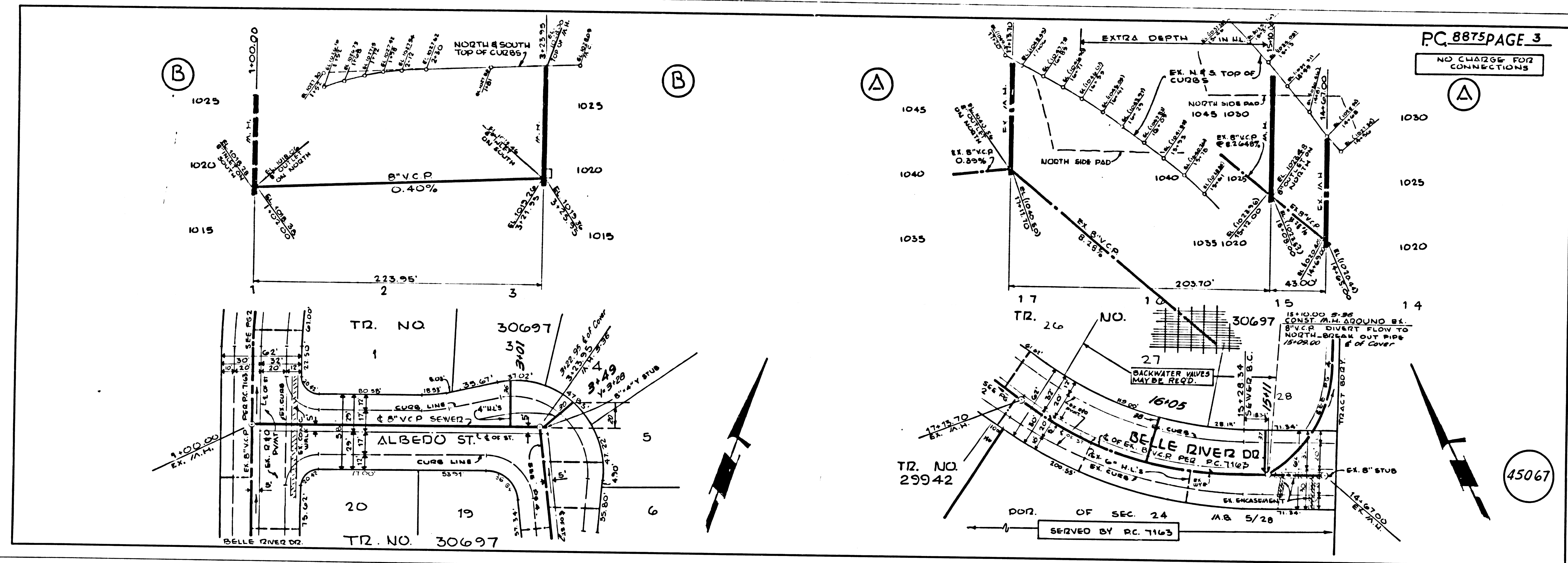
45065



P. CASE PAGE 2

NO CHARGE FOR CONNECTIONS

45066



LA COUNTY SEWER SHEET NO. 7 SOUTHERN CALIFORNIA BLUEPRINT CO. 1948