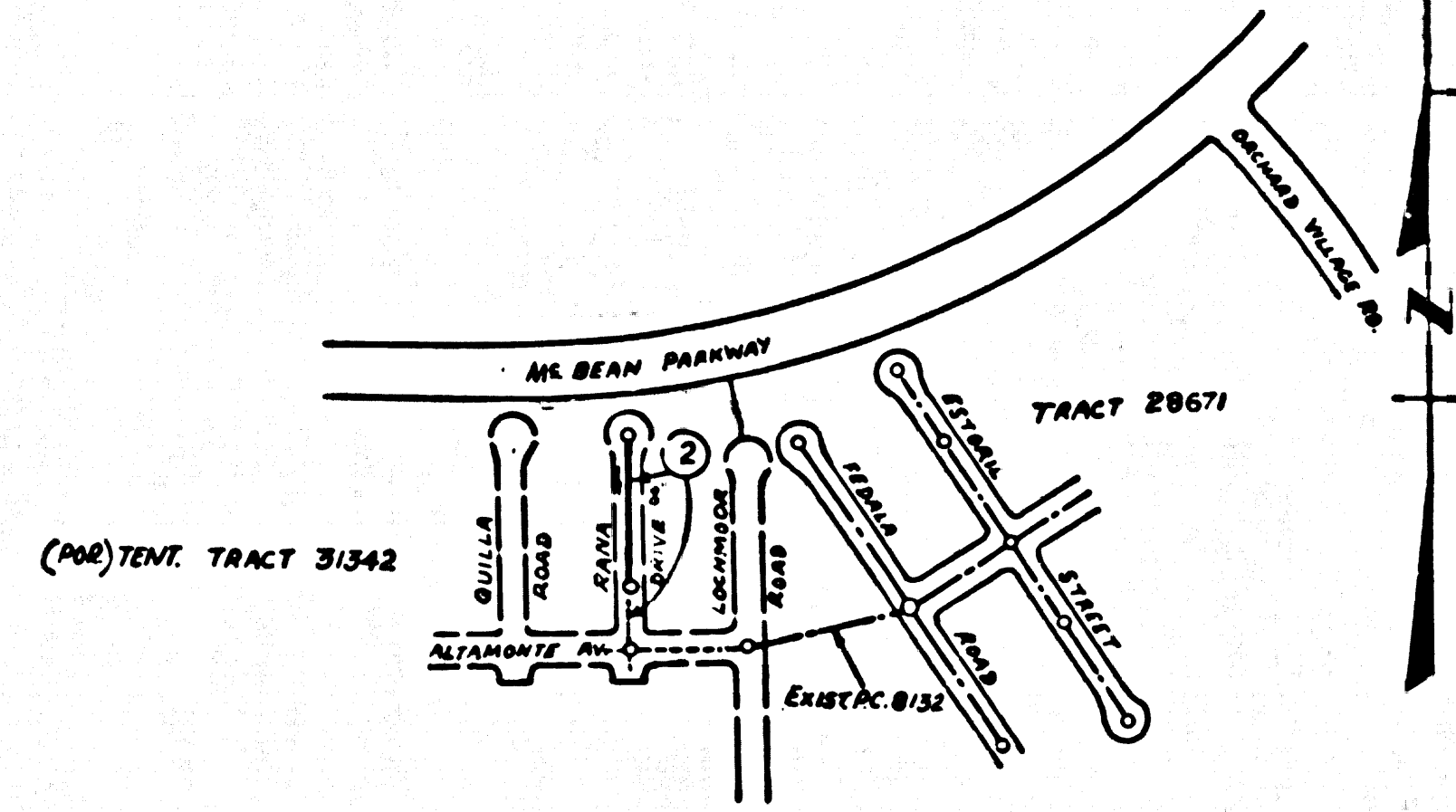


B.M. B.L. 642 ELEV. 1262.09  
 Read Dept. B.M. Tag No. 500 Cons. Inst. of  
 NE. cor. Edison High Tension Tower at M-575  
 W-33 34' Sx 6' E 1/2 mi. Canyon Rd.  
 NEWHALL QUAD. 19 82.

**NOTICE TO CONTRACTOR**  
 The existence and location of any underground utility pipes or structures shown on these plans are obtained by a search of the available records. To the best of my knowledge there are no existing utilities except as shown on these plans. The contractor is required to take due precautionary measures to protect the utility lines shown and any other lines not of record or not shown on these plans.  
 Ronald R. Horn 16713  
 S.E.C.

Note:  
 Full compliance with section 90A-12.9 of the special provisions will be required for backfill in streets. Certification of backfill compaction and sand equivalent by a qualified, registered Testing Laboratory shall be provided by the permittee prior to the issuance of a certificate of partial acceptance.

**ALLOW NO CONNECTIONS TO THIS SEWER**  
 The following must be done before connections may be made:  
 1. Ductile sewer made available for use.  
 2. Sanitary sewer Easements granted to the County of Los Angeles or local PG 31342 recorded.



NOTE:  
 NUMBER IN CIRCLE INDICATES PAGE NUMBER

INDEX MAP  
 P.C. NO. 8880  
 PORTION, TRACT 31342  
 SCALE: 1"=400'

**COLLECT CHARGES AS INDICATED**

**GENERAL NOTES:**

1. REVISIONS ARE IN PINK ABOVE S.E.C. & S.E. OR OTHER INITIALS OF THE COUNTY ENGINEER.
2. NO REVISIONS SHALL BE MADE IN THESE PLANS WITHOUT THE APPROVAL OF THE COUNTY ENGINEER.
3. NO REPRESENTATIVE OF THE COUNTY ENGINEER WILL SURVEY OR LAY OUT ANY PORTION OF THE WORK.
4. GRADING TO WHICH THIS IMPROVEMENT IS TO BE CONSTRUCTED ARE SHOWN ON PLANS AND PROFILES. GRADE POINTS FOR TOP OF CURB, CENTER LINE OF STREET, OR CENTER LINE OF ALLEY ARE SHOWN BY CIRCLES ON PROFILES. AT ALL POINTS BETWEEN DESIGNATED POINTS THE GRADE SHALL BE ESTABLISHED SO AS TO CONFORM TO A STRAIGHT LINE DRAWN BETWEEN SAID DESIGNATED POINTS.
5. THE PRIVATE ENGINEER SHALL FURNISH THE COUNTY ENGINEER WITH GRADE SHEETS AND STATIONING FOR ALL HOUSE LATERALS AND "T" OR "T" BRANCHES AND SHALL SHOW STAKES FOR THESE AT THEIR PROPER LOCATIONS WITH STATIONING PLAINLY MARKED. ALL HOUSE LATERALS SHALL BE CONSTRUCTED IN A STRAIGHT ALIGNMENT AT RIGHT ANGLES FROM THE MAIN LINE SEWER EXCEPT AS SHOWN ON THE PLANS. HOUSE LATERALS FROM CHIMNEYS SHALL NOT HAVE AN ANGLE OF LESS THAN 45° WITH THE MAIN LINE SEWER. ANY CHANGE IN ALIGNMENT SHALL BE REQUESTED IN WRITING BY THE PRIVATE ENGINEER.
6. THE PRIVATE ENGINEER SHALL FURNISH THE HOUSE LATERAL BENEATH AT THE PROPERTY LINE SHOW THE TOP OF CURB ELEVATION FOR EACH HOUSE LATERAL ON THE GRADE SHEET.
7. BEFORE WORK CAN BE STARTED, THE CONTRACTOR MUST OBTAIN A PERMIT TO EXCAVATE IN COUNTY STREETS FROM THE L.A. COUNTY ROAD DEPT., DISTRICT OFFICE NO. 22, AND PAY A FEE TO THE COUNTY ENGINEER, ROOM 28, 215 WEST 5TH STREET, DOWNTOWN, LOS ANGELES, CALIFORNIA.
8. IF WORK IS TO BE DONE IN A STATE HIGHWAY, A PERMIT MUST BE OBTAINED FROM THE STATE OF CALIFORNIA, DIVISION OF HIGHWAYS, 124 SOUTH SPRING STREET, LOS ANGELES, CALIFORNIA.
9. APPROVAL OF THIS PLAN BY THE COUNTY OF LOS ANGELES DOES NOT CONSTITUTE A GUARANTEE AS TO THE ACCURACY OF THE LOCATION OF OR THE EXISTENCE OR NON-EXISTENCE OF ANY UNDERGROUND UTILITY PIPES OR STRUCTURE WITHIN THE LIMITS OF THIS PROJECT. THE WORK APPEARS TO ALL APPEAR.
10. REFER TO SECTION 7-A.2 OF THE STANDARD SPECIFICATIONS, REGARDING SAFETY CONES.

**CONSTRUCTION NOTES:**

1. WORK SHALL BE CONSTRUCTED ACCORDING TO THE STANDARD SPECIFICATIONS FOR PUBLIC WORKS CONSTRUCTION (1976 EDITION) WITH THE EXCEPTIONS AND COUNTY ENGINEER SPECIAL PROVISIONS FOR THE CONSTRUCTION OF SANITARY SEWERS PARTS 12.1, 12.2, 12.3, 12.4, 12.5, 12.6, 12.7, 12.8, 12.9, 12.10, 12.11, 12.12, 12.13, 12.14, 12.15, 12.16, 12.17, 12.18, 12.19, 12.20, 12.21, 12.22, 12.23, 12.24, 12.25, 12.26, 12.27, 12.28, 12.29, 12.30, 12.31, 12.32, 12.33, 12.34, 12.35, 12.36, 12.37, 12.38, 12.39, 12.40, 12.41, 12.42, 12.43, 12.44, 12.45, 12.46, 12.47, 12.48, 12.49, 12.50, 12.51, 12.52, 12.53, 12.54, 12.55, 12.56, 12.57, 12.58, 12.59, 12.60, 12.61, 12.62, 12.63, 12.64, 12.65, 12.66, 12.67, 12.68, 12.69, 12.70, 12.71, 12.72, 12.73, 12.74, 12.75, 12.76, 12.77, 12.78, 12.79, 12.80, 12.81, 12.82, 12.83, 12.84, 12.85, 12.86, 12.87, 12.88, 12.89, 12.90, 12.91, 12.92, 12.93, 12.94, 12.95, 12.96, 12.97, 12.98, 12.99, 13.00.
2. THE CONTRACTOR SHALL NOTIFY THE CONSTRUCTION DIVISION BY TELEPHONE, TELETYPE OR BY MAIL, AT LEAST TWENTY-FOUR HOURS BEFORE STARTING ANY WORK UNDER THIS CONTRACT.
3. HOUSE LATERALS TO BE CONSTRUCTED WITH INVERTS AT PROPERTY LINE & FEET BELOW CURB GRADE EXCEPT AS NOTED.
4. USE OF THE BRANCHES MAY BE USED FOR CONNECTIONS TO MANHOLES EXCEPT AS NOTED.
5. ALL STRUCTURES SHALL BE SET ON SINK SANDS UNLESS OTHERWISE SPECIFIED ON THESE PLANS.
6. PROVIDE STAKES ON THE PROPERTY LINE OR PROPERTY LINES PRODUCED AT RIGHT ANGLES TO THE SEWER LINE AT THE CENTER LINE OF EACH MANHOLE.
7. MANHOLES FOR UNIMPROVED RIGHTS OF WAY TO BE SIX INCHES ABOVE FINISHED GRADE.
8. VITRIFIED CLAY PIPE JOINTS SHALL BE TYPE "B", "C", OR "D" PER STANDARD SPECIFICATIONS SECTION 200-2.
9. IF A POWER POLE IS WITHIN THREE FEET OF THE SEWER, THE SEWER SHALL BE ENCASED, PER S. 25, CASE 2, TWO FEET ON EACH SIDE FROM THE POINT OF INTERFERENCE.
10. IF DURING THE COURSE OF CONSTRUCTION IT IS DETERMINED THAT THERE IS LESS THAN FOUR FEET OF COVER OVER THE TOP OF A MAIN LINE OR HOUSE LATERAL V.C.P. SEWER WHICH IS NOT INDICATED ON THE PLANS, THE PIPE SHALL BE ENCASED PER S. 25, CASE 2, UNLESS OTHERWISE APPROVED BY THE COUNTY ENGINEER.
11. ALL JOINTS BETWEEN CAST IRON PIPE AND VITRIFIED CLAY PIPE SHALL BE MADE WITH A RUBBER GASKET JOINT, TYPE "C" OR "D", FIFTEEN MINIMUM IF NECESSARY PER STANDARD SPECIFICATIONS, SECTION 200-2.
12. SEWERS TO BE SET FOR GRADES BY SECTION 12.2.2 OF THE STANDARD SPECIFICATIONS AND SPECIAL PROVISIONS.
13. REPAIR/REPLACE ALL TRENCHES WITHIN PAVED AREAS TO MEET L.A. COUNTY ROAD DEPT. OR CALIFORNIA STATE HIGHWAY REQUIREMENTS IN ACCORDANCE WITH PERMITS.

PROFILE, ALIGNMENT AND GRADE OF  
**SANITARY SEWERS** PAGE 1  
 CONSTRUCTED BY  
**RANA DRIVE (FUTURE STREET)**  
 (MODELS FOR TR. NO. 31342)  
**PRIVATE CONTRACT NO. 8880**  
 INDEX 2555117  
 W.S. 62  
 - 1 SHEET - 2 PAGES  
 SCALE: VERT. 1"=4' HORIZ. 1"=40'  
 JAN. 1973  
 PREPARED IN THE OFFICES OF  
 SIKAND ENGINEERING ASSOCIATES  
 15205 BURBANK BLVD., VAN NUYS, CA 91406  
 BY: Ronald R. Horn  
 REG. C. E. No. 16713

THE FOLLOWING LATEST REVISED STANDARD PLANS ON FILE IN THE OFFICE OF THE COUNTY ENGINEER SHALL APPLY IN THE CONSTRUCTION OF THIS PROJECT:

1.0000	STANDARD PUBLIC SAFETY REQUIREMENTS	6-1
1.0001	STANDARD MANHOLE SET	6-2
1.0002	STANDARD MANHOLE SET	6-3
1.0003	STANDARD MANHOLE SET	6-4
1.0004	STANDARD MANHOLE SET	6-5
1.0005	STANDARD MANHOLE SET	6-6
1.0006	STANDARD MANHOLE SET	6-7
1.0007	STANDARD MANHOLE SET	6-8
1.0008	STANDARD MANHOLE SET	6-9
1.0009	STANDARD MANHOLE SET	6-10
1.0010	STANDARD MANHOLE SET	6-11
1.0011	STANDARD MANHOLE SET	6-12
1.0012	STANDARD MANHOLE SET	6-13
1.0013	STANDARD MANHOLE SET	6-14
1.0014	STANDARD MANHOLE SET	6-15
1.0015	STANDARD MANHOLE SET	6-16
1.0016	STANDARD MANHOLE SET	6-17
1.0017	STANDARD MANHOLE SET	6-18
1.0018	STANDARD MANHOLE SET	6-19
1.0019	STANDARD MANHOLE SET	6-20
1.0020	STANDARD MANHOLE SET	6-21
1.0021	STANDARD MANHOLE SET	6-22
1.0022	STANDARD MANHOLE SET	6-23
1.0023	STANDARD MANHOLE SET	6-24
1.0024	STANDARD MANHOLE SET	6-25
1.0025	STANDARD MANHOLE SET	6-26
1.0026	STANDARD MANHOLE SET	6-27
1.0027	STANDARD MANHOLE SET	6-28
1.0028	STANDARD MANHOLE SET	6-29
1.0029	STANDARD MANHOLE SET	6-30
1.0030	STANDARD MANHOLE SET	6-31
1.0031	STANDARD MANHOLE SET	6-32
1.0032	STANDARD MANHOLE SET	6-33
1.0033	STANDARD MANHOLE SET	6-34
1.0034	STANDARD MANHOLE SET	6-35
1.0035	STANDARD MANHOLE SET	6-36
1.0036	STANDARD MANHOLE SET	6-37
1.0037	STANDARD MANHOLE SET	6-38
1.0038	STANDARD MANHOLE SET	6-39
1.0039	STANDARD MANHOLE SET	6-40
1.0040	STANDARD MANHOLE SET	6-41
1.0041	STANDARD MANHOLE SET	6-42
1.0042	STANDARD MANHOLE SET	6-43
1.0043	STANDARD MANHOLE SET	6-44
1.0044	STANDARD MANHOLE SET	6-45
1.0045	STANDARD MANHOLE SET	6-46
1.0046	STANDARD MANHOLE SET	6-47
1.0047	STANDARD MANHOLE SET	6-48
1.0048	STANDARD MANHOLE SET	6-49
1.0049	STANDARD MANHOLE SET	6-50
1.0050	STANDARD MANHOLE SET	6-51
1.0051	STANDARD MANHOLE SET	6-52
1.0052	STANDARD MANHOLE SET	6-53
1.0053	STANDARD MANHOLE SET	6-54
1.0054	STANDARD MANHOLE SET	6-55
1.0055	STANDARD MANHOLE SET	6-56
1.0056	STANDARD MANHOLE SET	6-57
1.0057	STANDARD MANHOLE SET	6-58
1.0058	STANDARD MANHOLE SET	6-59
1.0059	STANDARD MANHOLE SET	6-60
1.0060	STANDARD MANHOLE SET	6-61
1.0061	STANDARD MANHOLE SET	6-62
1.0062	STANDARD MANHOLE SET	6-63
1.0063	STANDARD MANHOLE SET	6-64
1.0064	STANDARD MANHOLE SET	6-65
1.0065	STANDARD MANHOLE SET	6-66
1.0066	STANDARD MANHOLE SET	6-67
1.0067	STANDARD MANHOLE SET	6-68
1.0068	STANDARD MANHOLE SET	6-69
1.0069	STANDARD MANHOLE SET	6-70
1.0070	STANDARD MANHOLE SET	6-71
1.0071	STANDARD MANHOLE SET	6-72
1.0072	STANDARD MANHOLE SET	6-73
1.0073	STANDARD MANHOLE SET	6-74
1.0074	STANDARD MANHOLE SET	6-75
1.0075	STANDARD MANHOLE SET	6-76
1.0076	STANDARD MANHOLE SET	6-77
1.0077	STANDARD MANHOLE SET	6-78
1.0078	STANDARD MANHOLE SET	6-79
1.0079	STANDARD MANHOLE SET	6-80
1.0080	STANDARD MANHOLE SET	6-81
1.0081	STANDARD MANHOLE SET	6-82
1.0082	STANDARD MANHOLE SET	6-83
1.0083	STANDARD MANHOLE SET	6-84
1.0084	STANDARD MANHOLE SET	6-85
1.0085	STANDARD MANHOLE SET	6-86
1.0086	STANDARD MANHOLE SET	6-87
1.0087	STANDARD MANHOLE SET	6-88
1.0088	STANDARD MANHOLE SET	6-89
1.0089	STANDARD MANHOLE SET	6-90
1.0090	STANDARD MANHOLE SET	6-91
1.0091	STANDARD MANHOLE SET	6-92
1.0092	STANDARD MANHOLE SET	6-93
1.0093	STANDARD MANHOLE SET	6-94
1.0094	STANDARD MANHOLE SET	6-95
1.0095	STANDARD MANHOLE SET	6-96
1.0096	STANDARD MANHOLE SET	6-97
1.0097	STANDARD MANHOLE SET	6-98
1.0098	STANDARD MANHOLE SET	6-99
1.0099	STANDARD MANHOLE SET	6-100

COUNTY OF LOS ANGELES, CALIFORNIA  
 HARVEY T. BRANDT, COUNTY ENGINEER JOHN D. PARKHURST, CHIEF ENGINEER  
 APPROVED Amadeo R.D. 1/24/73 APPROVED John D. Parkhurst  
 REGIONAL ENGINEER DATE OFFICE ENGINEER  
 CHECKED Ronald R. Horn DATE  
 REG. C.E. NO. 16713  
 NEWHALL BLDG DIST 8.2 1 N 0371 84

