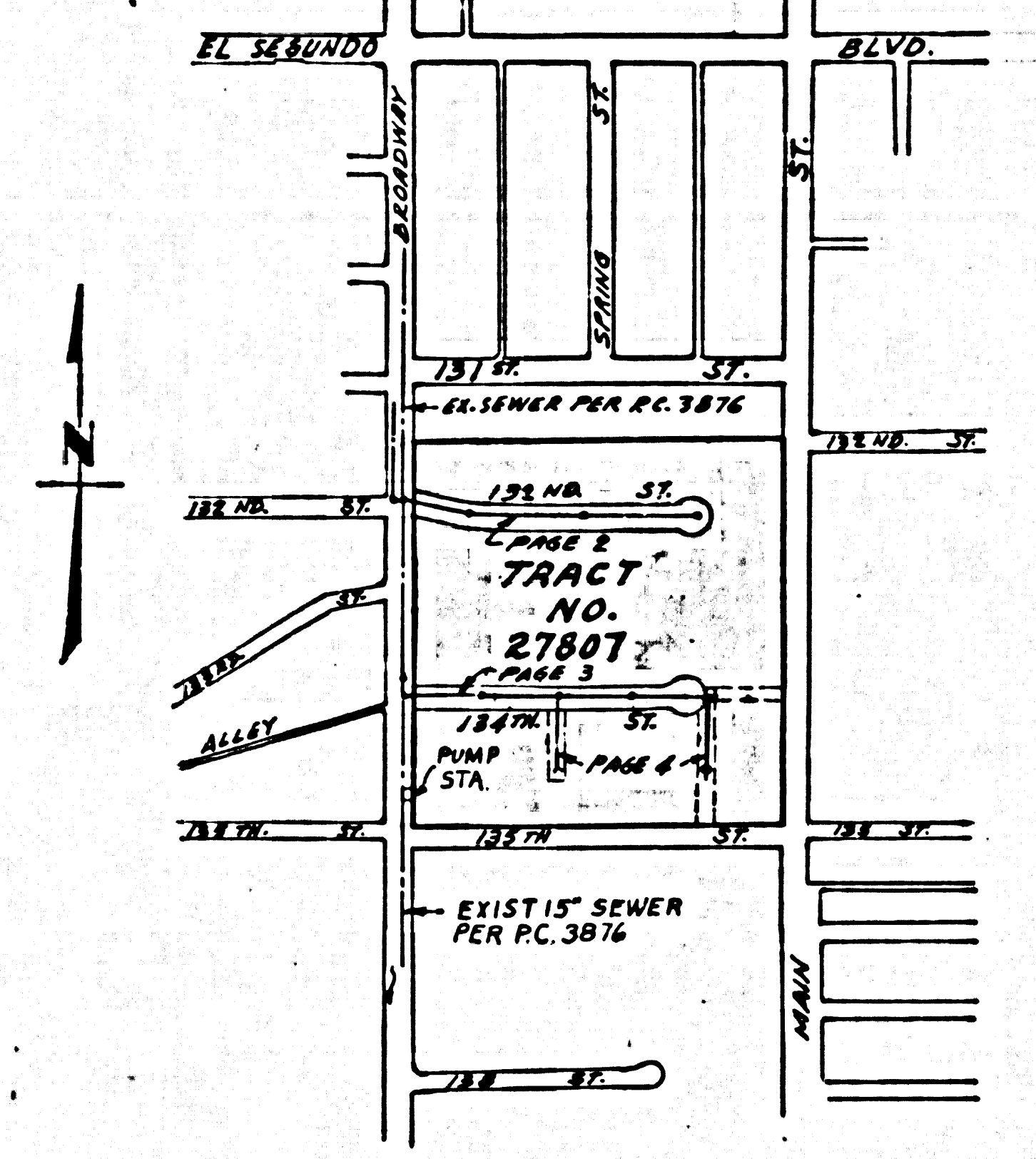


B.M. BY-7210 ELEV. 117.295  
 S. N.E. 20 FT. S.B.C.R. AT SE COR.  
 MAIN ST. AND 135TH ST. 87 FT. S 40' FILE  
 WATTS QUAD. 19 TO ADJ.



VICINITY MAP  
 SCALE: 1" = 600'

TRACT NO 27807

REVISION  
 CHANGED 10" VCP IN 134" STREET TO 15" VCP  
 APPROVED *[Signature]* 10/22/73  
 COUNTY ENGINEER  
 DATE: 5-11-73

IN FULL COMPLIANCE WITH SECTION 806-1.5.5 OF THE SPECIAL PROVISIONS WILL BE REQUIRED FOR BACKFILL IN STREETS SATISFACTION OF BACKFILL COMPLETION AND BAND EQUIVALENTS BY A QUALIFIED REGISTERED TESTING LABORATORY SHALL BE PROVIDED BY THE CONTRACTOR PRIOR TO THE RESUME OF A CERTIFICATION OF MATERIAL ACCEPTANCE.

County Sanitation Districts shall be notified prior to the following so that required inspection can be made (Phone 888-8888) s = 838-1161

ACCEPTANCE OF THE PROJECT

No connections for the disposal of industrial wastes shall be made to sewers shown on these drawings without written permission from the Chief Engineer and General Manager of the County Sanitation Districts.

NOTE: LOT 15 SERVED FROM EXISTING H.L. AT STA. 12 +82.00 ON BROADWAY-PC.3876

LENNOX BLDG. DIST. NO. 7

PROFILE ALIGNMENT AND GRADE OF  
 SANITARY SEWERS PAGE 1  
 TO BE CONSTRUCTED IN  
 TRACT NO 27807

PRIVATE CONTRACT NO. 8881

W.S. 28  
 2 SHEETS, 4 PAGES  
 SCALE: VERT. 1" = 4' HORIZ. 1" = 40'  
 NOV. 1972  
 PREPARED IN THE OFFICES OF  
 J. M. EDWARDS & CO.  
 321-6767 327-0543  
 REG. C. E. NO. 11322

- NOTES:
- PROVIDE STAKES ON THE PROPERTY LINE OR PROPERTY LINES PRODUCED AT RIGHT ANGLES TO THE SEWER LINE AT THE CENTER LINE OF EACH MANHOLE.
  - NO REPRESENTATIVE OF THE COUNTY ENGINEER WILL SURVEY OR LAY OUT ANY PORTION OF THE WORK.
  - THE PRIVATE ENGINEER SHALL FURNISH THE COUNTY ENGINEER WITH GRADE SHEETS AND STATIONINGS FOR ALL HOUSE LATERALS AND 12" BRANCHES AND SHALL PROVIDE STAKES FOR THEM AT THEIR PROPER LOCATIONS WITH STATIONING PLAINLY MARKED. ALL HOUSE LATERALS SHALL BE CONSTRUCTED IN A STRAIGHT ALIGNMENT AT RIGHT ANGLES FROM THE MAIN LINE SEWER EXCEPT AS SHOWN ON THE PLANS. HOUSE LATERALS FROM CHIMNEYS SHALL NOT HAVE AN ANGLE OF LESS THAN 45° WITH THE MAIN LINE SEWER. ANY CHANGE IN ALIGNMENT SHALL BE REQUESTED IN WRITING BY THE PRIVATE ENGINEER.
  - THE PRIVATE ENGINEER SHALL FURNISH THE HOUSE LATERAL DEPTH AT THE PROPERTY LINE AND THE TOP OF CURB ELEVATION FOR EACH HOUSE LATERAL ON THE GRADE SHEET.
  - NO REVISIONS SHALL BE MADE IN THESE PLANS WITHOUT THE APPROVAL OF THE COUNTY ENGINEER.
  - THE CONTRACTOR SHALL NOTIFY THE CONSTRUCTION DIVISION BY TELEPHONE, HARBOR 5-0707, EXT. 8188, AT LEAST TWENTY-FOUR HOURS BEFORE STARTING ANY WORK UNDER THIS CONTRACT.
  - ALL STRUCTURES SHALL BE EITHER BRICK MANHOLES PER S-25 OR PRECAST CONCRETE MANHOLES PER S-30, EXCEPT AS NOTED.
  - "Y" OR "T" BRANCHES MAY BE USED FOR CONNECTIONS TO MAINLINE SEWERS EXCEPT AS NOTED.
  - MANHOLE TOPS IN UNIMPROVED RIGHTS-OF-WAY TO BE SIX INCHES ABOVE FINISHED GRADE.
  - USE EXTRA STRENGTH PIPE. ALL PIPE IS STANDARD DEPTH EXCEPT AS NOTED.
  - VITRIFIED CLAY PIPE JOINTS SHALL BE TYPE "D", "E", OR "F" PER STANDARD SPECIFICATIONS SECTION 215-2.
  - IF A HOUSE LATERAL IS WITHIN THREE FEET OF THE SEWER, THE SEWER SHALL BE ENCASED PER S-25, CASE 2. THIS PART OF EACH DRAWING SHALL BE INDICATED BY A NOTE.
  - IF DURING THE COURSE OF CONSTRUCTION IT IS DETERMINED THAT THERE IS LESS THAN FOUR FEET OF COVER OVER THE TOP OF A MAIN LINE OR HOUSE LATERAL V.C.P. SEWER WHICH IS NOT INDICATED ON THE PLANS, THE PIPE SHALL BE ENCASED PER S-25, CASE 2 UNLESS OTHERWISE APPROVED BY THE COUNTY ENGINEER.
  - HOUSE LATERALS TO BE CONSTRUCTED WITH INVERTS AT PROPERTY LINE 4 FEET BELOW CURB GRADE EXCEPT AS NOTED.
  - RESURFACE ALL TRENCHES WITHIN PAVED AREAS TO MEET L.A. COUNTY ROAD DEPT. OR CALIFORNIA STATE HIGHWAY REQUIREMENTS IN ACCORDANCE WITH PERMITS.
  - SEWERS TO BE TESTED FOR LEAKAGE PER SECTION 806-2.2.1 OF THE STANDARD SPECIFICATIONS.
  - REFER TO SECTION 7-10.6.1 OF THE STANDARD SPECIFICATIONS, REGARDING SAFETY ORDERS.
  - ALL JOINTS BETWEEN CAST IRON PIPE AND VITRIFIED CLAY PIPE SHALL BE MADE WITH A RUBBER SLEEVE JOINT, TYPE "C" OR "D" WITH GUMMING IN ACCORDANCE WITH STANDARD SPECIFICATIONS, SECTION 108-2.
- THE FOLLOWING LATEST REVISED STANDARD PLANS ON FILE IN THE OFFICE OF THE COUNTY ENGINEER SHALL APPLY IN THE CONSTRUCTION OF THIS PROJECT.

LEGEND

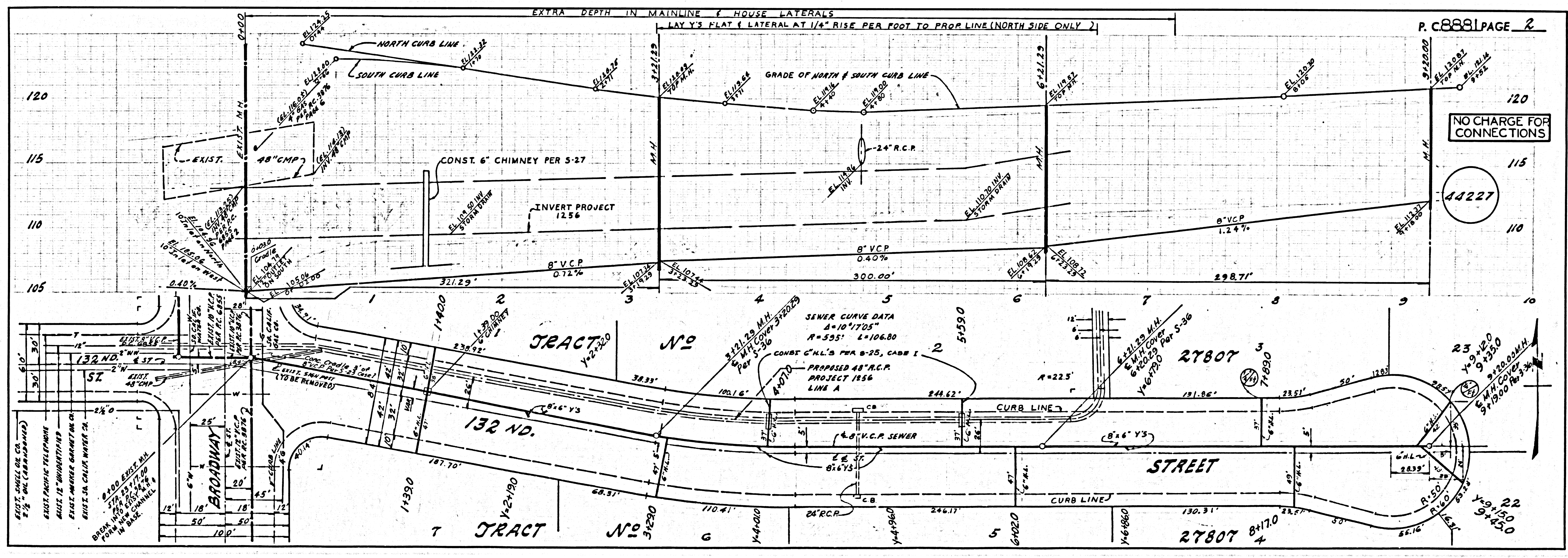
MANHOLE PUBLIC SANITARY REQUIREMENTS	S-1
BRICK MANHOLE	S-2
NON-REINFORCED PRECAST CONCRETE MANHOLE	S-3
MANHOLE INLET AND RISE	S-4
STANDARD MANHOLE COVER	S-5
SAFETY FOR SEWER PIPE	S-6
CRACKING AND BRICKWORK	S-7
WYE ON THE SUPPORT	S-8
ALLOWABLE TRENCH WIDTHS	S-9

NOTICE TO CONTRACTOR  
 The existence and location of any underground utility pipes or structures shown on these plans are obtained by a search of the available records to the best of my knowledge. There are no existing utilities except as shown on these plans. The contractor is required to take due precautionary measures to protect the utility lines shown and any other lines not of record or not shown on these plans.

COLLECT CHARGES AS INDICATED

COUNTY OF LOS ANGELES, CALIFORNIA  
 HARVEY T. BRANDT COUNTY ENGINEER  
 APPROVED BY *[Signature]* 3-22-73 REGIONAL ENGINEER  
 APPROVED BY *[Signature]* OFFICIAL SEAL  
 CHECKED BY *[Signature]* 3-22-73 REG. C. E. NO. 11322

J.N.0250.02



NO CHARGE FOR CONNECTIONS

44227

