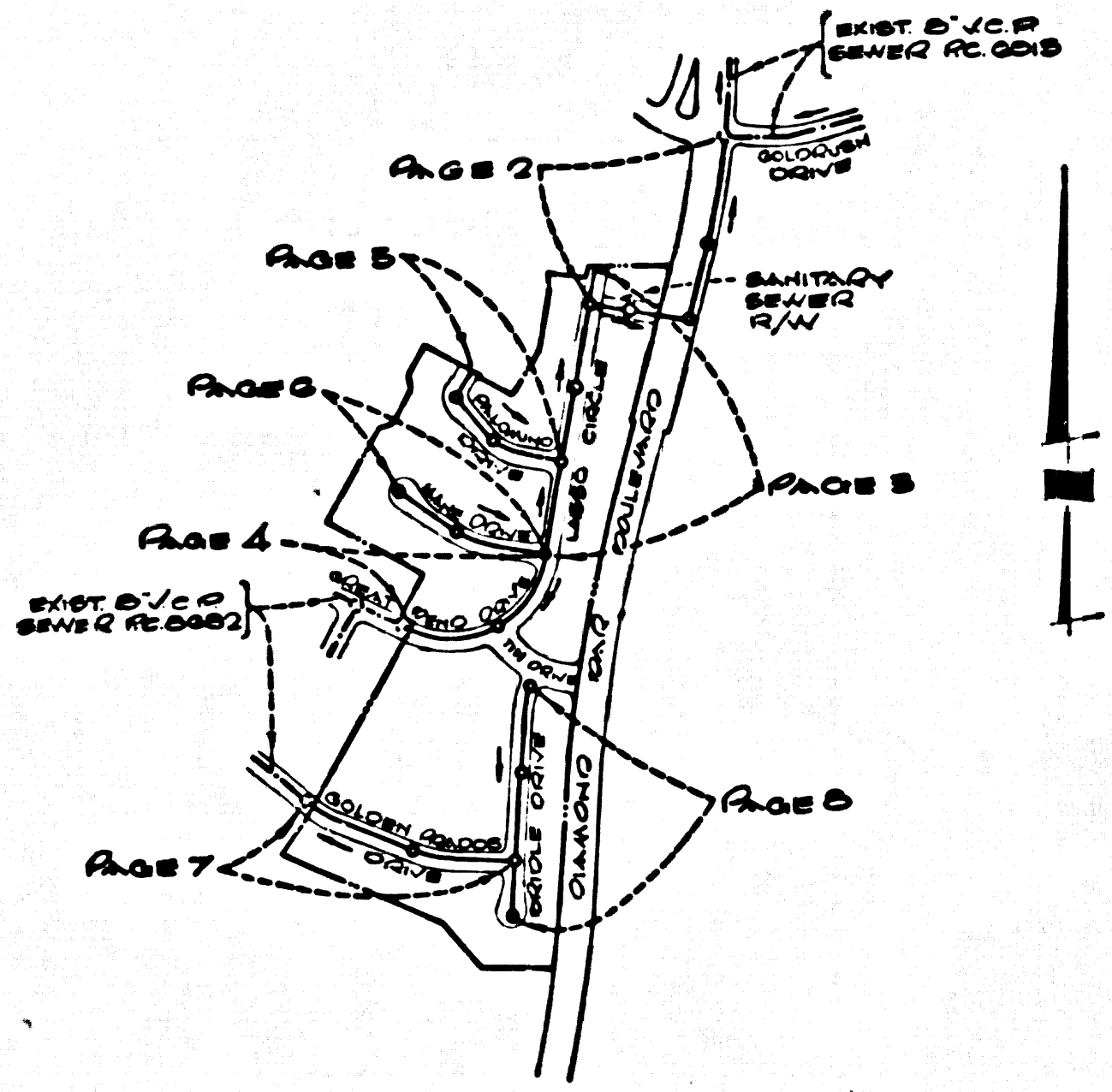
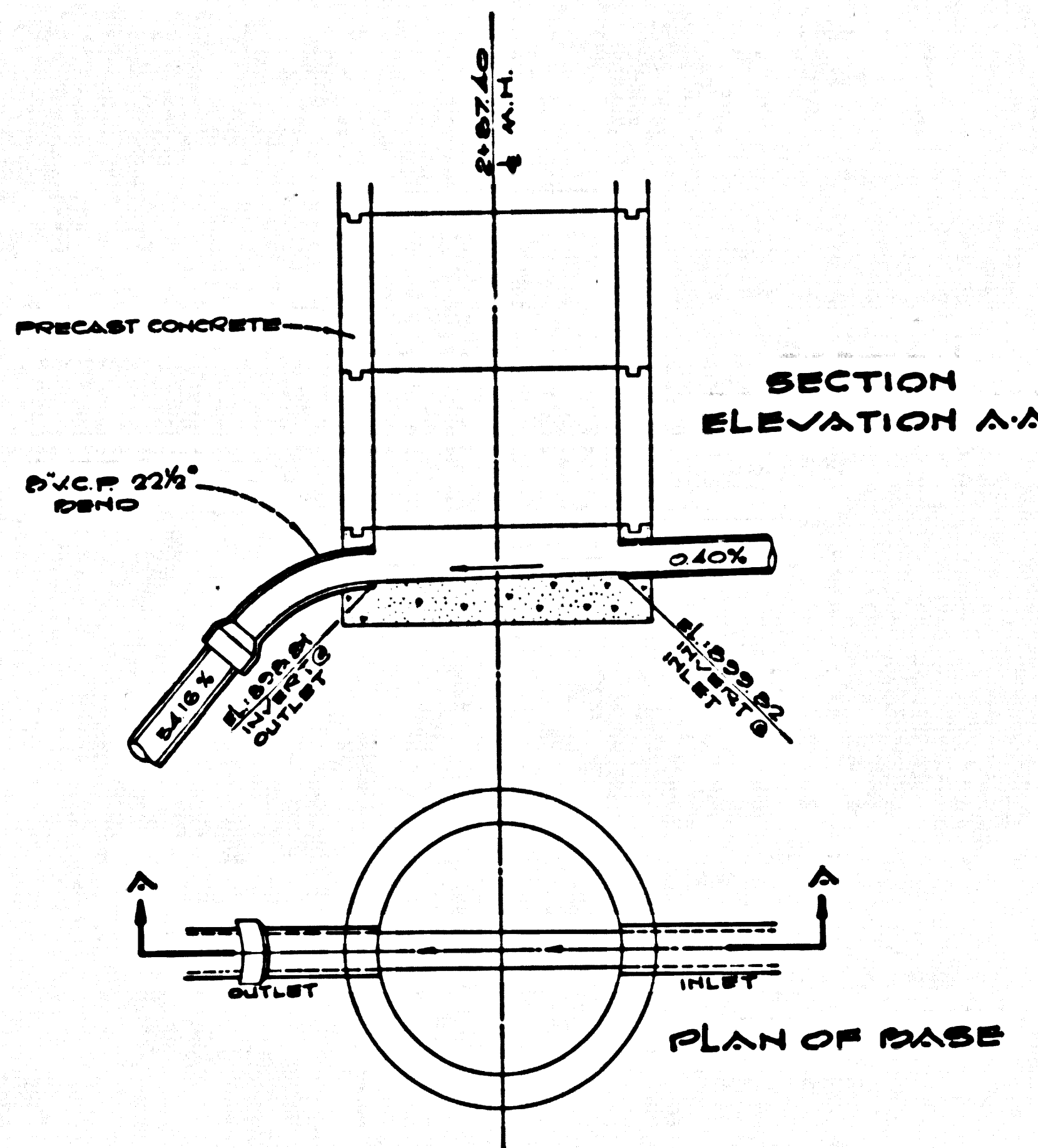


B.M. 200723 ELEV. 641.616
 CORNER TAG IN CTR. CONC. HOWL.
 77 FT. E. 5/4 DIAMOND BLVD.
 425 FT. S. 1/4 GOLDEN DRIVE.
 QUAD. 1972



INDEX MAP
 SCALE: 1"=60'
 TRACT 31141
 PC 8886



MANHOLE DETAIL
 PAGE 2A
 STA. 2+87.40

CONSTRUCTION NOTES CONT.
 (b) ALL BACKFILL & BATH REPAIRS SHALL BE COMPLETED TO A MINIMUM OF 90% OF MAXIMUM DENSITY PER A.S.T.M. STANDARD METHOD OF TEST D958 AS APPROVED ACCEPTABLE CONSTRUCTION OF SUCH CONNECTION SHALL BE SUBMITTED TO THE CONSTRUCTION DIVISION.

DOUBLE SCALE:
GENERAL NOTES:
 1. ELEVATIONS ARE IN FEET ABOVE M.S.L. & U.S. SEA LEVEL DATUM OF 1929.
 2. NO REVISIONS SHALL BE MADE IN THESE PLANS WITHOUT THE APPROVAL OF THE COUNTY ENGINEER.
 3. NO REPRESENTATIVE OF THE COUNTY ENGINEER WILL SURVEY OR LAY OUT ANY PORTION OF THE WORK.
 4. GRADES TO WHICH THIS IMPROVEMENT IS TO BE CONSTRUCTED ARE SHOWN ON PLANS AND HORSE SHOE GRADE POINTS FOR TOP OF CURBS, CENTER LINE OF STREETS, OR CENTER LINE OF ALLEYS ARE SHOWN BY CIRCLES OR TRIANGLES. AT ALL POINTS BETWEEN DESIGNATED POINTS THE GRADE SHALL BE ESTABLISHED SO AS TO CONFORM TO A STRAIGHT LINE DRAWN BETWEEN SAID DESIGNATED POINTS.
 5. THE PRIVATE ENGINEER SHALL FURNISH THE COUNTY ENGINEER WITH GRADE SHEETS AND STATIONING FOR ALL HOUSE LATERALS AND "Y" OR "T" BRANCHES AND SHALL PROVIDE STAKES FOR THEM AT THEIR PROPER LOCATIONS WITH STATIONING PLAINLY MARKED. ALL HOUSE LATERALS SHALL BE CONSTRUCTED IN A STRAIGHT ALIGNMENT AT RIGHT ANGLES FROM THE MAIN LINE SEWER EXCEPT AS SHOWN ON THE PLANS. HOUSE LATERALS FROM CHIMNEYS SHALL NOT HAVE AN ANGLE OF LESS THAN 45° WITH THE MAIN LINE SEWER. ANY CHANGE IN ALIGNMENT SHALL BE REQUESTED IN WRITING BY THE PRIVATE ENGINEER.
 6. THE PRIVATE ENGINEER SHALL FURNISH THE HOUSE LATERAL BATH AT THE PROPERTY LINE BELOW THE TOP OF CURB ELEVATION FOR EACH HOUSE LATERAL ON THE GRADE SHEET.
 7. BEFORE WORK CAN BE STARTED, THE CONTRACTOR MUST OBTAIN A PERMIT TO EXCAVATE IN COUNTY STREETS FROM THE L.A. COUNTY ROAD DEPT., DISTRICT OFFICE NO. 1, AND PAY A FEE TO THE COUNTY ENGINEER, 100 S. SPRING STREET, LOS ANGELES, CALIFORNIA. REGIONAL OFFICE, TO COVER THE COST OF CONSTRUCTION INSPECTION AND RECORD PLANS.
 8. IF WORK IS TO BE DONE IN A STATE HIGHWAY, A PERMIT MUST BE OBTAINED FROM THE STATE OF CALIFORNIA, DIVISION OF HIGHWAYS, 130 SOUTH SPRING STREET, LOS ANGELES, CALIFORNIA.
 9. APPROVAL OF THIS PLAN BY THE COUNTY OF LOS ANGELES DOES NOT CONSTITUTE A REPRESENTATION AS TO THE ACCURACY OF THE LOCATION OF THE EXISTENCE OR NON-EXISTENCE OF ANY UNDERGROUND UTILITY PIPE, OR STRUCTURE WITHIN THE LIMITS OF THIS PROJECT. THIS NOTE APPLIES TO ALL PAGES.
 10. REFER TO SECTION 7-18.41 OF THE STANDARD SPECIFICATIONS, REGARDING SAFETY ORDERS.
 County Sanitation Districts shall be notified prior to the following so that required inspections can be made (Phone 357-0125 & 338-1161)
 No connections for the disposal of industrial wastes shall be made without written permission from the Chief Engineer and General Manager of the County Sanitation Districts.

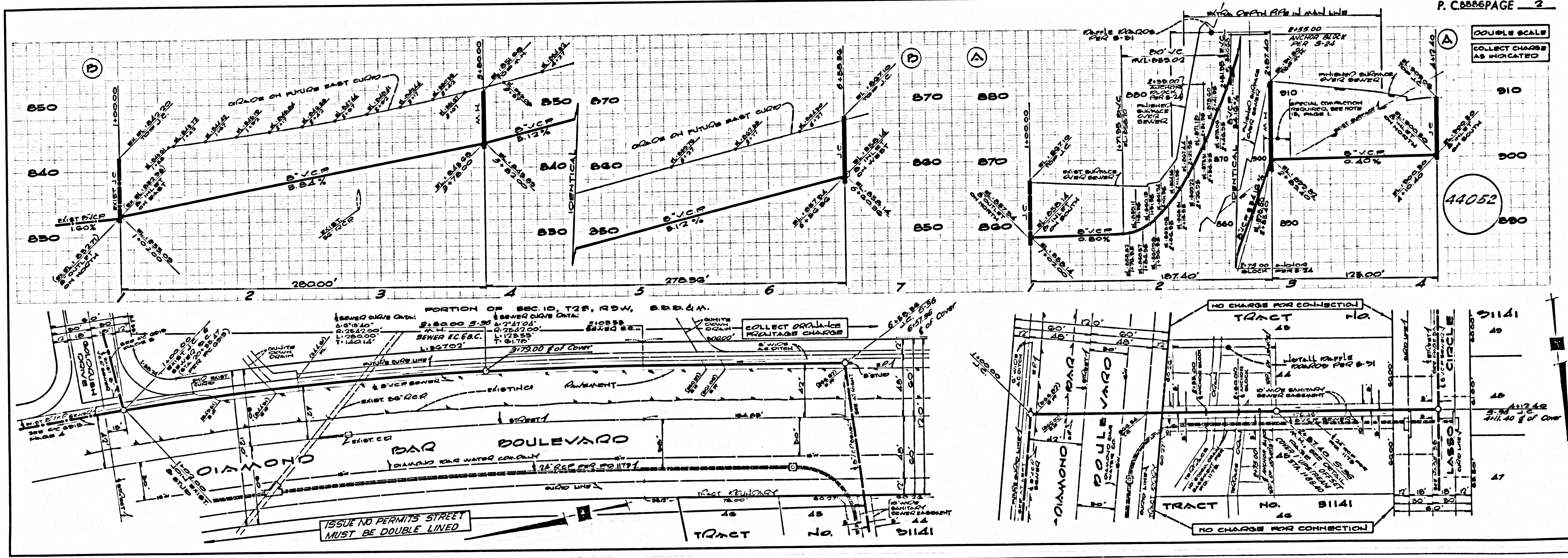
ACCEPTANCE OF THE PROJECT:
CONSTRUCTION NOTES:
 1. WORK SHALL BE CONSTRUCTED ACCORDING TO THE STANDARD SPECIFICATIONS FOR PUBLIC WORKS CONSTRUCTION WITH EDITION WITH 1972-73 SUPPLEMENTS AND COUNTY ENGINEER SPECIAL PROVISIONS FOR THE CONSTRUCTION OF SANITARY SEWERS DATED APRIL 10, 1972 AND SHALL BE PROSECUTED ONLY IN THE PRESENCE OF THE COUNTY ENGINEER.
 2. THE CONTRACTOR SHALL NOTIFY THE CONSTRUCTION DIVISION BY TELEPHONE, MAINLINE 9-0707, EXT. 8153, AT LEAST TWENTY-FOUR HOURS BEFORE STARTING ANY WORK UNDER THIS CONTRACT.
 3. HOUSE LATERALS TO BE CONSTRUCTED WITH INVERTS AT PROPERTY LINE 4 FEET BELOW CURB GRADE EXCEPT AS NOTED.
 4. WYE OR TEE BRANCHES MAY BE USED FOR CONNECTIONS TO MAINLINE SEWERS EXCEPT AS NOTED.
 5. ALL STRUCTURES SHALL BE EITHER BRICK MANHOLES PER 5-3 OR PRECAST CONCRETE MANHOLES PER 5-36, EXCEPT AS NOTED.
 6. PROVIDE STAKES ON THE PROPERTY LINE OR PROPERTY LINES PROCEEDED AT RIGHT ANGLES TO THE SEWER LINE AT THE CENTER LINE OF EACH MANHOLE.
 7. MANHOLE TOPS IN UNIMPROVED RIGHTS OF WAY TO BE SIX INCHES ABOVE FINISHED GRADE.
 8. VITRIFIED CLAY PIPE JOINTS SHALL BE TYPE "B", "P", OR "Q" PER STANDARD SPECIFICATIONS SECTION 308-2.
 9. IF A POWER POLE IS WITHIN THREE FEET OF THE SEWER, THE SEWER SHALL BE ENCASED, PER 5-23, CASE 2, TWO FEET ON EACH SIDE FROM THE POINT OF INTERFERENCE.
 10. IF DURING THE COURSE OF CONSTRUCTION IT IS DETERMINED THAT THERE IS LESS THAN FOUR FEET OF COVER OVER THE TOP OF A MAIN LINE OR HOUSE LATERAL V.C.P. SEWER WHICH IS NOT INDICATED ON THE PLANS, THE PIPE SHALL BE ENCASED PER 5-23, CASE 2 UNLESS OTHERWISE APPROVED BY THE COUNTY ENGINEER.
 11. ALL JOINTS BETWEEN CAST IRON PIPE AND VITRIFIED CLAY PIPE SHALL BE MADE WITH A RUBBER SLEEVE JOINT, TYPE "C" OR "B", WITH BUSHING IF NECESSARY PER STANDARD SPECIFICATIONS, SECTION 308-2.
 12. SEWERS TO BE TESTED FOR LEAKAGE PER SECTION 306-2.3.7 OF THE STANDARD SPECIFICATIONS AND SPECIAL PROVISIONS.
 13. REPAIRS TO ALL TRENCHES WITHIN PAVED AREAS TO MEET L.A. COUNTY ROAD DEPT. OR CALIFORNIA STATE HIGHWAY REQUIREMENTS IN ACCORDANCE WITH PERMITS.
 14. FULL COMPLIANCE WITH SECTION 808-15.3 OF THE SPECIAL PROVISIONS WILL BE REQUIRED FOR BACKFILL IN STREETS. CERTIFICATION OF BACKFILL COMPLETION AND BOND EQUIVALENTS BY A QUALIFIED, LICENSED TESTING LABORATORY SHALL BE PROVIDED BY THE CONTRACTOR PRIOR TO THE ISSUANCE OF A CERTIFICATE OF FINAL ACCEPTANCE.
 15. SPECIAL BACKFILL IS DESIGNATED AS FOLLOWS:
 (a) BACKFILL TRENCHES AND OVERLAP COVER SHALL BE REMOVED SO AS TO REVEAL THE MANUAL OR MECHANICAL GRADING & SURFACE SURVEY ON THE GRADING PLAN APPROVED FOR THIS TRACT BY THE BUILDING & SAFETY DIVISION.

PROFILE, ALIGNMENT AND GRADE OF
SANITARY SEWERS PAGE 1
 TO BE CONSTRUCTED IN
TRACT No. 31141
PRIVATE CONTRACT NO. 8886
 W.S. 89
 4 SHEETS, 8 PAGES
 SCALE: VERT. 1"=4' APRIL 1973
 HORIZ. 1"=40'
 PREPARED IN THE OFFICES OF
TOUPE ENGINEERING, INC.
 100 NORTH WILSON STREET
 SANTA ANA, CALIFORNIA
 BY: *John Mable*
 REG. C. E. No. 14014

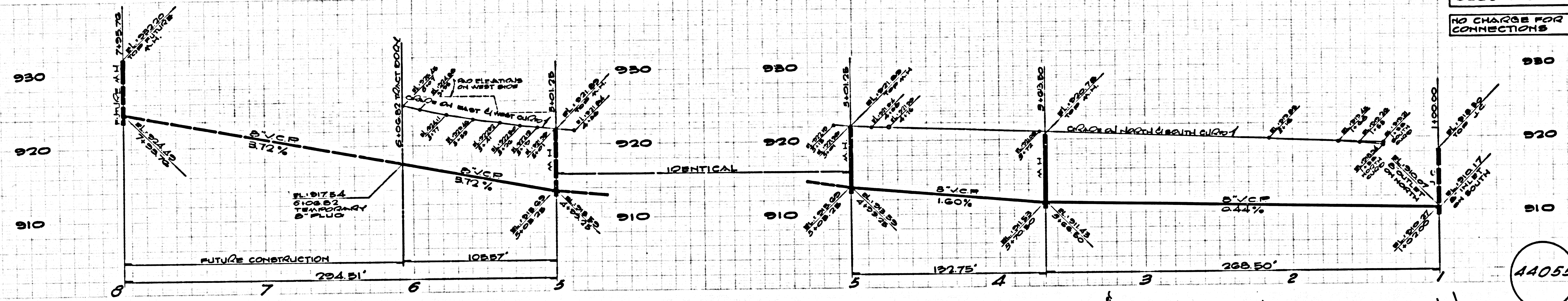
THE FOLLOWING LATEST REVISED STANDARD PLANS ON FILE IN THE OFFICE OF THE COUNTY ENGINEER SHALL APPLY IN THE CONSTRUCTION OF THIS PROJECT.

10000	51
MINIMUM PUBLIC SAFETY REQUIREMENTS	52
BRICK MANHOLE	53
STANDARD MANHOLE STEP	54
BEDDING FOR SEWER PIPE	55
CRUSHING AND IMBEDDING	56
WYE OR TEE SUPPORT	57
ALLOWABLE TRENCH WIDTHS	58
LOCKING MANHOLE FRAME AND COVER	59
NON-SUPPORTING PRECAST CONCRETE MANHOLE	60
ANCHOR BOLTS	61
BROOKING PROTECTION IN STREET CLOSURES	62

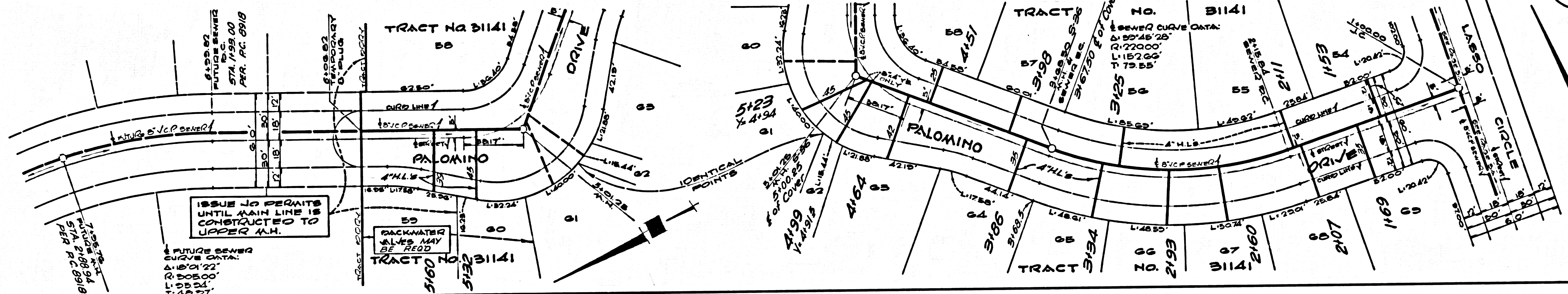
COUNTY OF LOS ANGELES, CALIFORNIA
 JOHN A. LAMBIE, COUNTY ENGINEER
 JOHN D. PARKHURST, CHIEF ENGINEER
 APPROVED *R.F. Worling* APPROVED *J. Wallerstein*
 CHECKED *Thomas E. Howard* 2 APR 73 DATE
 REG. C. E. NO. 15153
 SAN ANA BLDG. DIST. NO. 12
 I.N. 028002



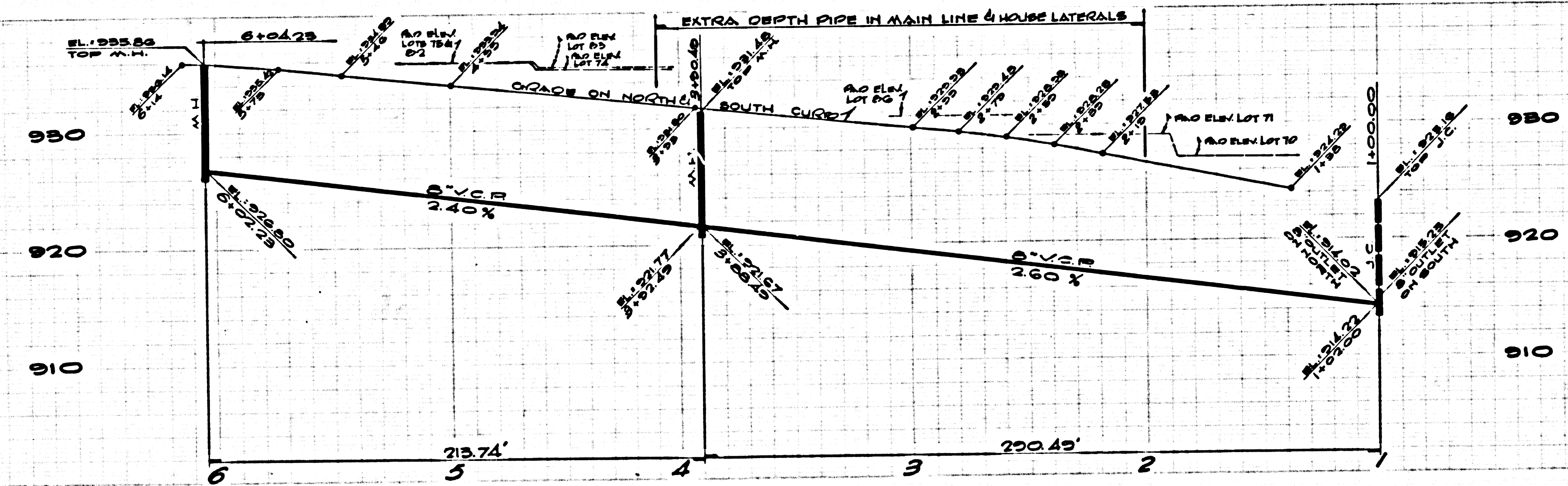
DOUBLE SCALE
NO CHARGE FOR CONNECTIONS



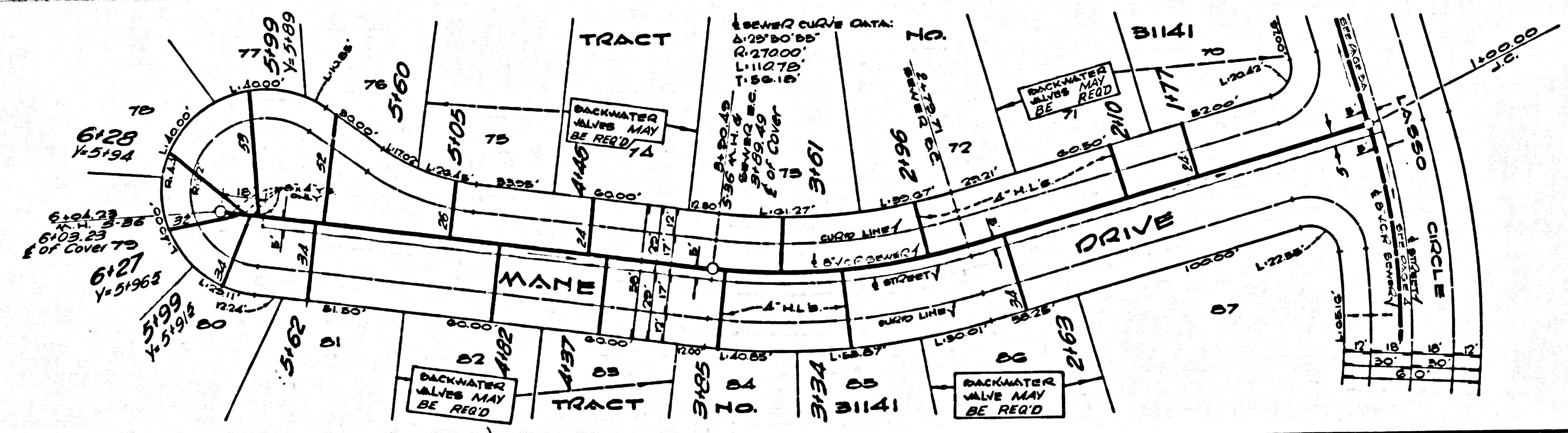
44055



DOUBLE SCALE
NO CHARGE FOR CONNECTIONS



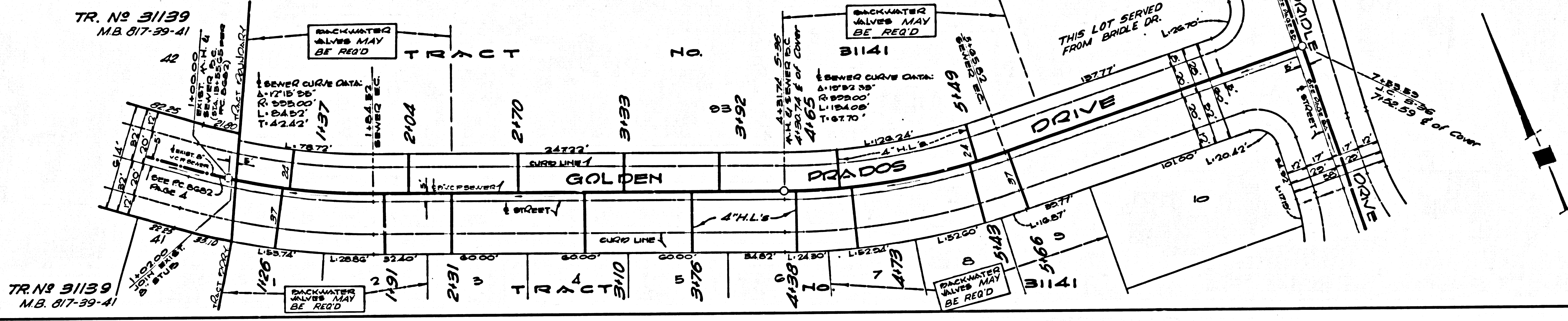
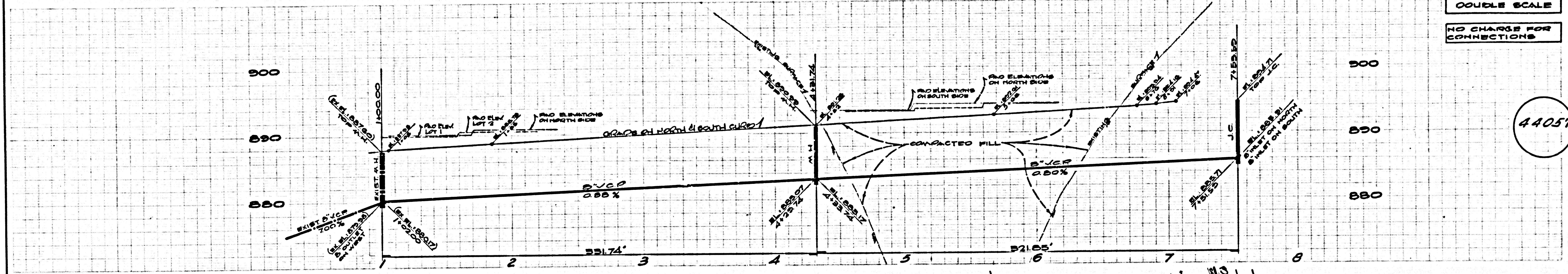
44056



DOUBLE SCALE

NO CHARGE FOR CONNECTIONS

44057



DOUBLE SCALE

NO CHARGE FOR CONNECTIONS

44058

