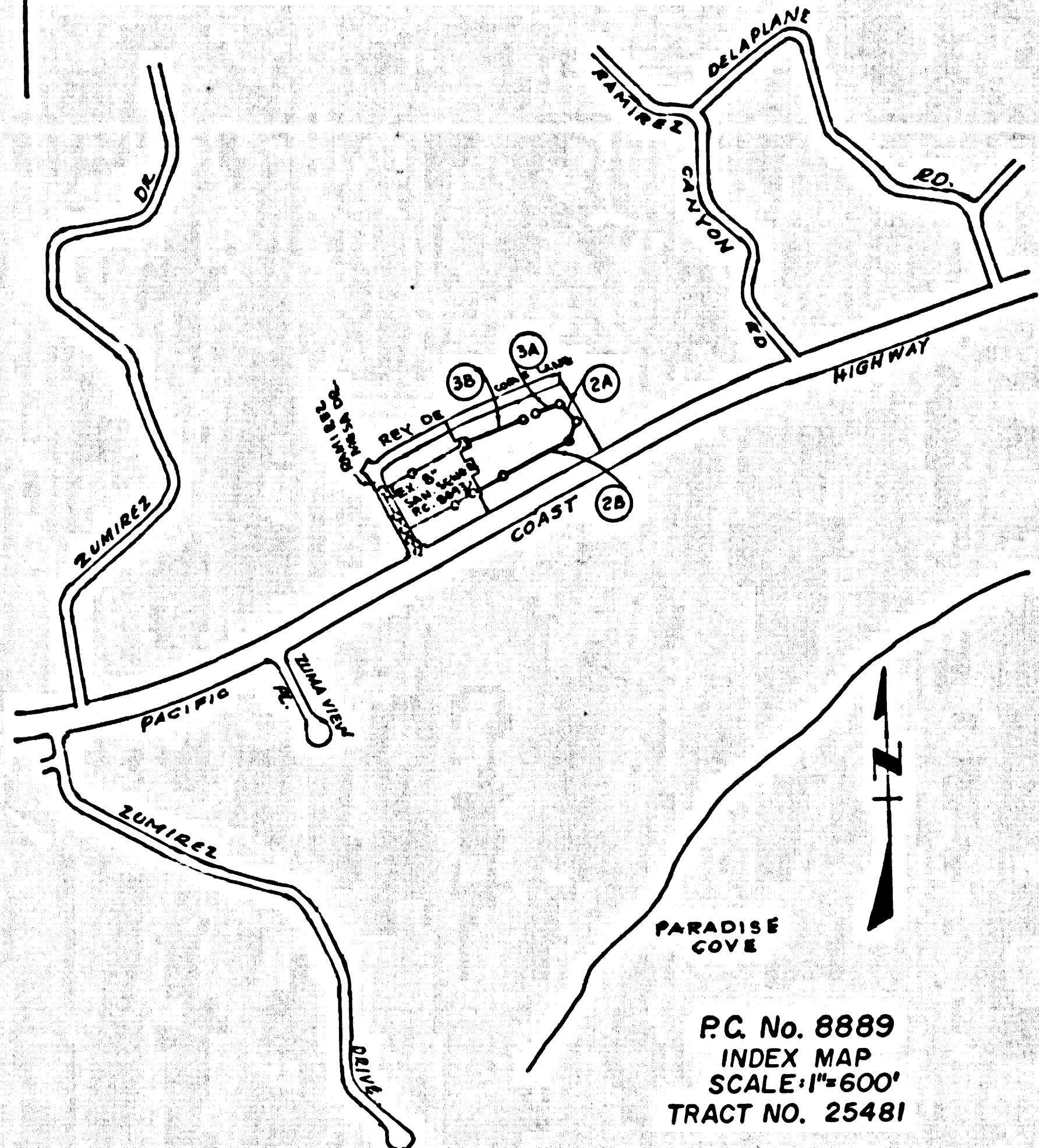


B.M. BY 5431 ELEV. 118.871
 CS MON IN WELL 12 IN DN IN DIVIDING STRIP
 PACIFIC COAST HWY NR HSE 28333 0.3MI
 W PARADISE COVE IFT S L-T N MEDIAN
 CB MKD (SOLSTICE CANYON B-10C 1950)
 MALIBU QUAD. 1965.



P.C. No. 8889
 INDEX MAP
 SCALE: 1"=600'
 TRACT NO. 25481

NOTE: Number in circle indicates page number.

THE FOLLOWING COUNTY ENGINEER STANDARD PLANS APPLY TO THIS PROJECT:

LEGEND	8-1
MIN. PUBLIC SAFETY REQUIREMENTS	8-2
BRICK MANHOLE	8-3
NON REINFORCED PRECAST CONCRETE MANHOLE	8-3B
MANHOLE FRAME AND COVER	8-3S
MANHOLE STEP	8-17
BEDDING FOR SEWER PIPE	8-21
CRADLING AND ENGAGEMENT	8-23
WYE OR TEE SUPPORT	8-28
ALLOWABLE TRENCH WIDTHS	8-33

FULL COMPLIANCE WITH SECTION 308-19.3 OF THE SPECIAL PROVISIONS WILL BE REQUIRED FOR BACKFILL IN STREETS. CERTIFICATION OF BACKFILL COMPACTION AND SAND EQUIVALENTS BY A QUALIFIED REGISTERED TESTING LABORATORY SHALL BE PROVIDED BY THE PERMITTEE PRIOR TO THE ISSUANCE OF A CERTIFICATE OF PARTIAL ACCEPTANCE.

DOUBLE SCALE MALIBU BLDG. DIST. NO. 9.2

PROFILE ALIGNMENT AND GRADE OF
 SANITARY SEWERS PAGE 1

TO BE CONSTRUCTED IN
 TRACT NO. 25481

PRIVATE CONTRACT NO. 8889

W.S. 92 (A-4)

2 SHEETS, 4 PAGES

SCALE: 1"=8' HORIZ. 1"=4' VERT. JANUARY, 1973

PREPARED IN THE OFFICES OF
 HIGHLAND ENGINEERS
 14724 VENTURA BLVD., SUITE 600
 SHERMAN OAKS, CA. 91403

BY: *Robert K. Knudsen*
 REG. C.E. NO. 15429

FOR LEGEND SEE PLAN NO. S-1

- NOTES:
1. PROFILE STAGES ON THE PROPERTY LINE OR PROPERTY LINES PRODUCED AT RIGHT ANGLES TO THE SEWER LINE AT THE CENTER LINE OF EACH MANHOLE.
 2. NO REPRESENTATIVE OF THE COUNTY ENGINEER WILL SURVEY OR LAY OUT ANY PORTION OF THE WORK.
 3. THE PRIVATE ENGINEER SHALL FURNISH THE COUNTY ENGINEER WITH GRADE SHEETS AND STATIONING FOR ALL HOUSE LATERALS AND "T" BRANCHES AND SHALL PROVIDE STAKES FOR THEM AT THEIR PROPER LOCATIONS WITH STATIONING PLAINLY MARKED. ALL HOUSE LATERALS SHALL BE CONSTRUCTED IN A STRAIGHT ALIGNMENT AT RIGHT ANGLES FROM THE MAIN LINE SEWER EXCEPT AS SHOWN ON THE PLANS. HOUSE LATERALS FROM CHIMNEYS SHALL NOT HAVE AN ANGLE OF LESS THAN 45° WITH THE MAIN LINE SEWER. ANY CHANGE IN ALIGNMENT SHALL BE REQUESTED IN WRITING BY THE PRIVATE ENGINEER.
 4. THE PRIVATE ENGINEER SHALL FURNISH THE HOUSE LATERAL DEPTH AT THE PROPERTY LINE BELOW THE TOP OF CURB ELEVATION FOR EACH HOUSE LATERAL ON THE GRADE SHEET.
 5. NO REVISIONS SHALL BE MADE IN THESE PLANS WITHOUT THE APPROVAL OF THE COUNTY ENGINEER.
 6. THE CONTRACTOR SHALL NOTIFY THE CONSTRUCTION DIVISION BY TELEPHONE, MADISON 9-6747, EXT. 81381, AT LEAST TWENTY-FOUR HOURS BEFORE STARTING ANY WORK UNDER THIS CONTRACT.
 7. MANHOLES SHALL BE BRICK SEWER STRUCTURES PER S-3 ON PRECAST CONCRETE MANHOLES PER S-3B EXCEPT AS NOTED. MANHOLES APPROVED BY THE COUNTY ENGINEER.
 8. USE 12-INCH MANHOLE FRAMES AND COVERS S-33 EXCEPT AS NOTED.
 9. MANHOLE TOPS IN UNIMPROVED RIGHTS OF WAY TO BE SIX INCHES ABOVE FINISHED GRADE OR LEVEL WITH FINISHED GRADE WHEN IN IMPROVED RIGHTS-OF-WAY.
 10. USE EXTRA STRENGTH PIPE, ALL PIPE IS STANDARD DEPTH EXCEPT AS NOTED.
 11. USE MECHANICAL COMPRESSION JOINTS, TYPE "D", "F", OR "G" FOR ALL V.C.P. JOINTS PER SPEC. 208.2.
 12. IF A POWER POLE IS WITHIN THREE FEET OF THE SEWER, THE SEWER SHALL BE ENCASED, PER S-23, TWO FEET ON EACH SIDE FROM THE POINT OF INTERFERENCE.
 13. IF DURING THE COURSE OF CONSTRUCTION IT IS DETERMINED THAT THERE IS LESS THAN FOUR FEET OF COVER OVER THE TOP OF A MAIN LINE OR HOUSE LATERAL V.C.P. SEWER WHICH IS NOT INDICATED ON THE PLANS, THE PIPE SHALL BE ENCASED PER S-23, UNLESS OTHERWISE APPROVED BY THE COUNTY ENGINEER.
 14. HOUSE LATERALS TO BE CONSTRUCTED WITH INVERTS AT PROPERTY LINE SIX FEET BELOW CURB GRADE EXCEPT AS NOTED.
 15. REVERSE ALL TRENCHES WITHIN PAVED AREAS TO MEET L.A. COUNTY ROAD DEPT. OR CALIFORNIA STATE HIGHWAY REQUIREMENTS IN ACCORDANCE WITH PERMITS.
 16. FOR ALLOWABLE LEAKAGE TEST USE 1.1 TEST METHOD PER SEC. 308-2.3.7 OF THE STANDARD SPECS.
 17. ALL STATE AND LOCAL TRENCH SAFETY ORDERS WILL BE STRICTLY ENFORCED PER SEC. 7-10.4.1 OF THE STANDARD SPECS.
 18. WYE OR TEE BRANCHES MAY BE USED FOR CONNECTIONS TO MAINLINE SEWERS EXCEPT AS NOTED.
 19. ALL JOINTS BETWEEN CAST IRON PIPE AND VITRIFIED CLAY PIPE SHALL BE MADE WITH A RUBBER SLEEVE JOINT, TYPE "C" OR "D" (WITH BUSHING IF NECESSARY) PER STANDARD SPEC. SECTION 208-2.

NOTES:
 GRADES TO WHICH THIS IMPROVEMENT IS TO BE CONSTRUCTED ARE SHOWN ON PLANS AND PROFILE. GRADE POINTS FOR TOP OF CURB, CENTER LINE OF STREETS, OR CENTER LINE OF ALLEYS ARE SHOWN BY CIRCLES ON PROFILES AT ALL POINTS BETWEEN DESIGNATED POINTS. THE GRADE SHALL BE ESTABLISHED SO AS TO CONFORM TO A STRAIGHT LINE DRAWN BETWEEN SAID DESIGNATED POINTS. ELEVATIONS ARE IN FEET ABOVE U.S.C. & G.S. SEA LEVEL DATUM OF 1929. THIS DRAWING AND THE DATA HEREON ARE HEREBY MADE A PART OF THE SPECIFICATIONS. WORK SHALL BE CONSTRUCTED ACCORDING TO STANDARD SPECIFICATIONS DATED APRIL 10, 1972. BEFORE WORK CAN BE STARTED, THE CONTRACTOR MUST OBTAIN A PERMIT TO EXCAVATE IN COUNTY STREETS FROM THE L.A. COUNTY ROAD DEPT., DISTRICT OFFICE NO. 10, AT THE MALIBU REGIONAL OFFICE, SUFFICIENT TO COVER THE COST OF CONSTRUCTION INSPECTION AND RECORD PLANS. APPROVAL OF THIS PLAN BY THE COUNTY OF LOS ANGELES DOES NOT CONSTITUTE A REPRESENTATION AS TO THE ACCURACY OF THE LOCATION OF OR THE EXISTENCE OR NON-EXISTENCE OF ANY UNDERGROUND UTILITY PIPE OR STRUCTURE WITHIN THE LIMITS OF THE PROJECT. THIS NOTE APPLIES TO ALL PAGES. IF WORK IS TO BE DONE IN A STATE HIGHWAY, A PERMIT MUST BE OBTAINED FROM THE STATE OF CALIFORNIA, DIVISION OF HIGHWAYS, 120 SOUTH SPRING STREET, LOS ANGELES, CALIFORNIA.

COUNTY OF LOS ANGELES, CALIFORNIA
 HARVEY T. BRANDT, COUNTY ENGINEER

APPROVED BY: *Robert K. Knudsen*
 REGIONAL ENGINEER

SUBMITTED BY: *James L. ...*
 CHECKED BY: *James L. ...*
 REG. C.E. NO. 13712

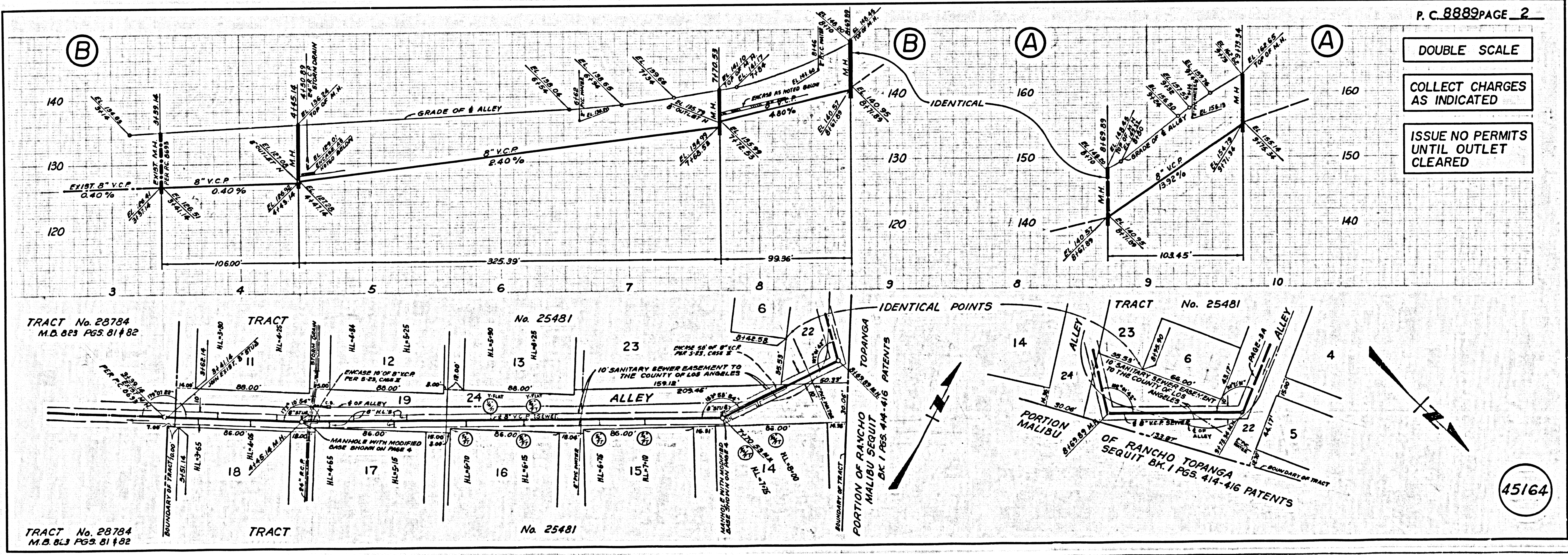
FOR PUBLIC WORKS CONSTRUCTION (1970 EDITION WITH 1971 & 1972 SUPPLEMENTS) AND COUNTY ENGINEER SPECIAL PROVISIONS FOR THE CONSTRUCTION OF SANITARY SEWERS

COLLECT CHARGES AS INDICATED

NOTICE TO CONTRACTOR
 The existence and location of any underground utility pipes or structures shown on these plans are obtained by a search of the available records to the best of my knowledge there are no existing utilities except as shown on these plans. The contractor is required to take due precautionary measures to protect the utility lines shown and any other lines not of record or not shown on these plans.
Robert K. Knudsen
 REG. C.E. NO. 15429

45163

J.N. 0250.02



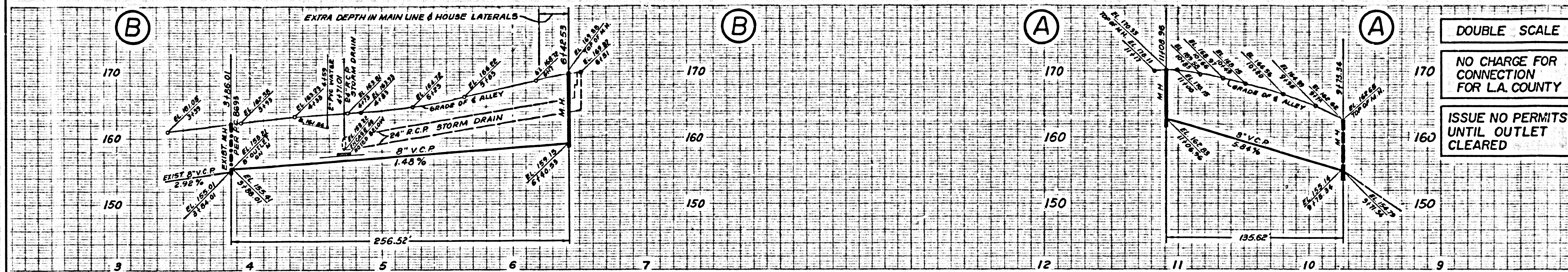
P.C. 8889 PAGE 2

DOUBLE SCALE

COLLECT CHARGES AS INDICATED

ISSUE NO PERMITS UNTIL OUTLET CLEARED

45164

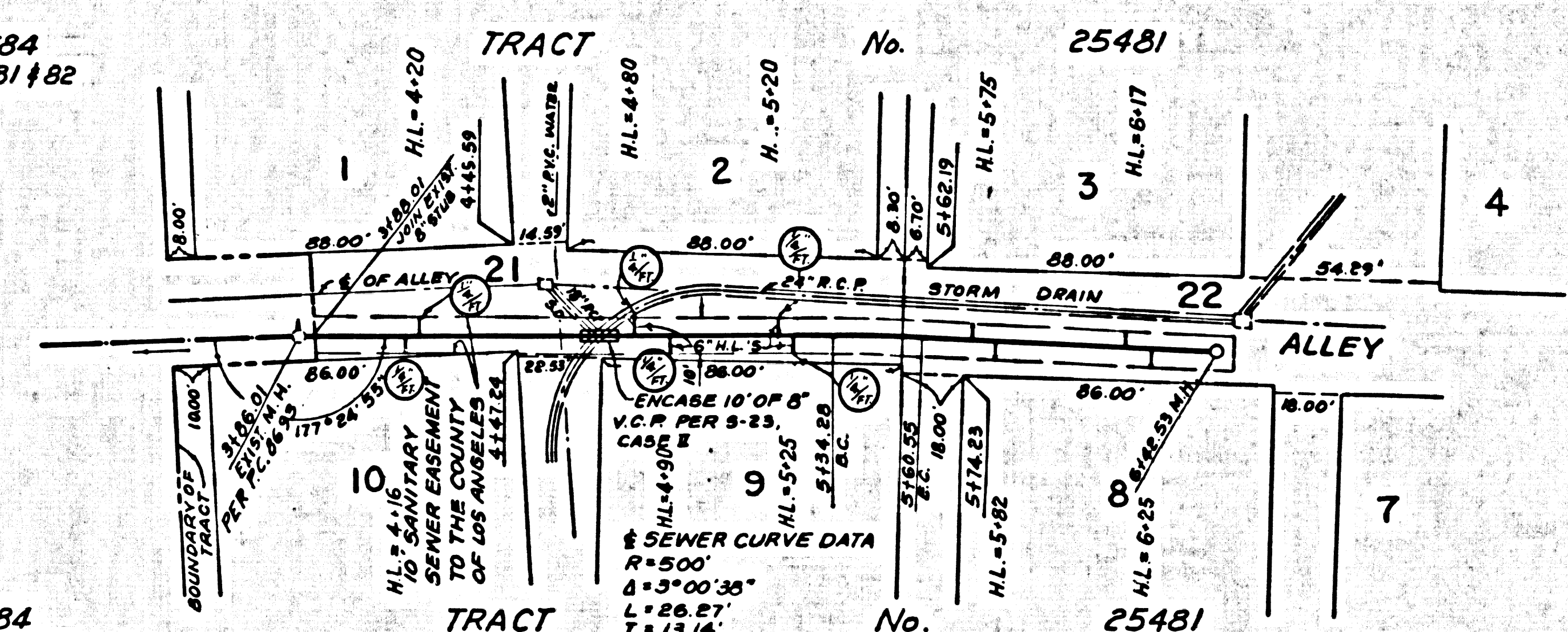


DOUBLE SCALE

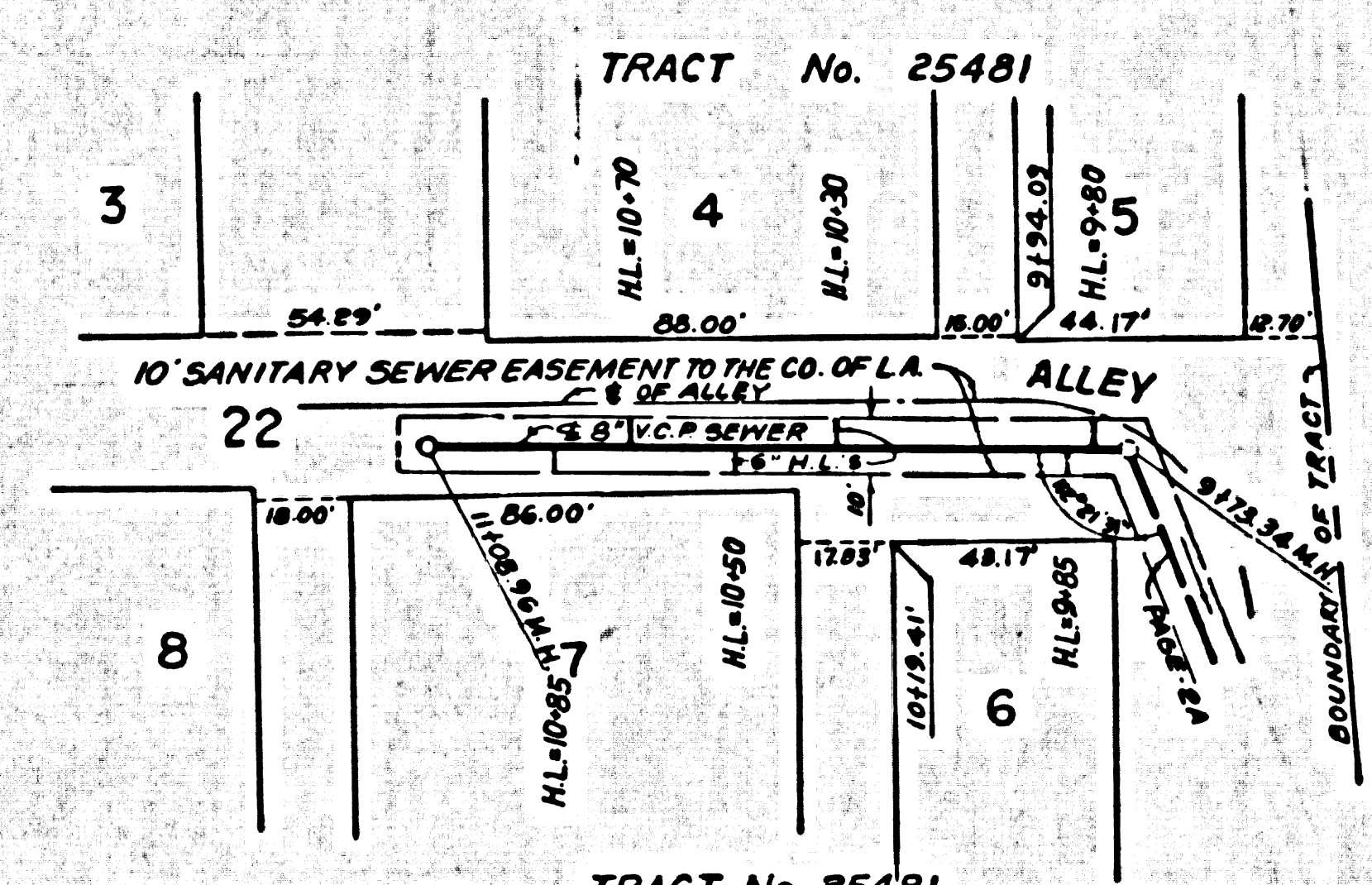
NO CHARGE FOR CONNECTION FOR L.A. COUNTY

ISSUE NO PERMITS UNTIL OUTLET CLEARED

TRACT No. 28784
M.B. 823 P65. 81482

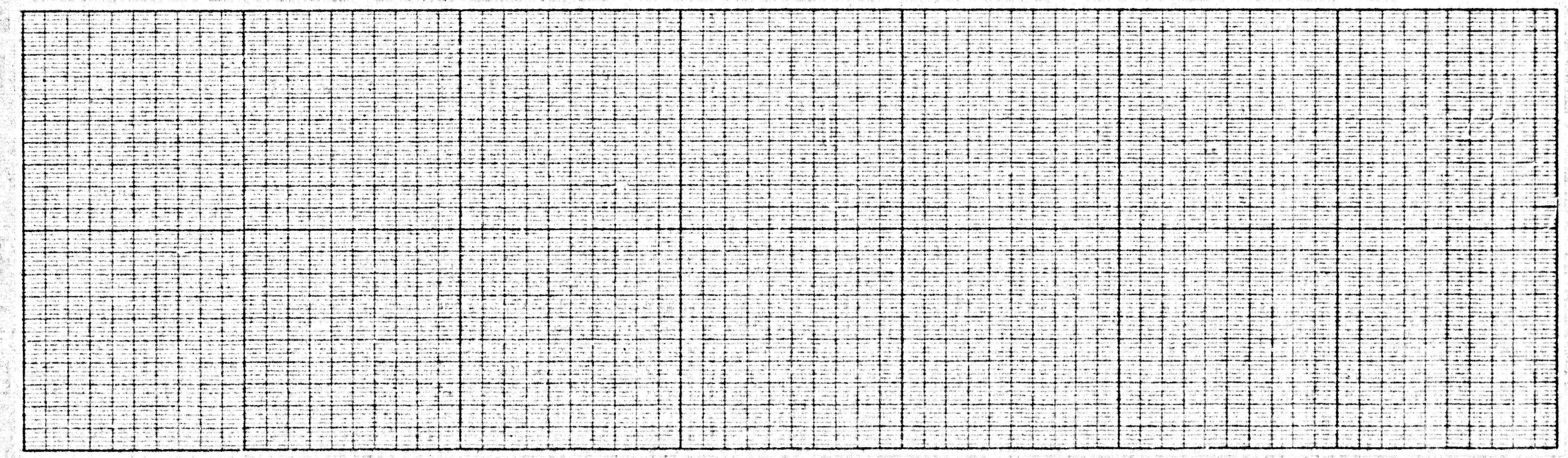
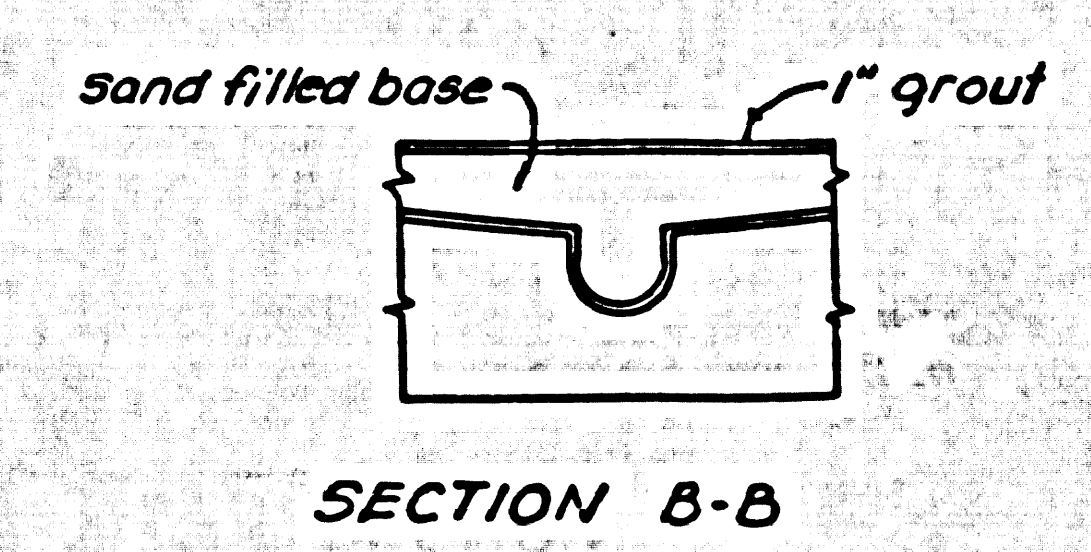
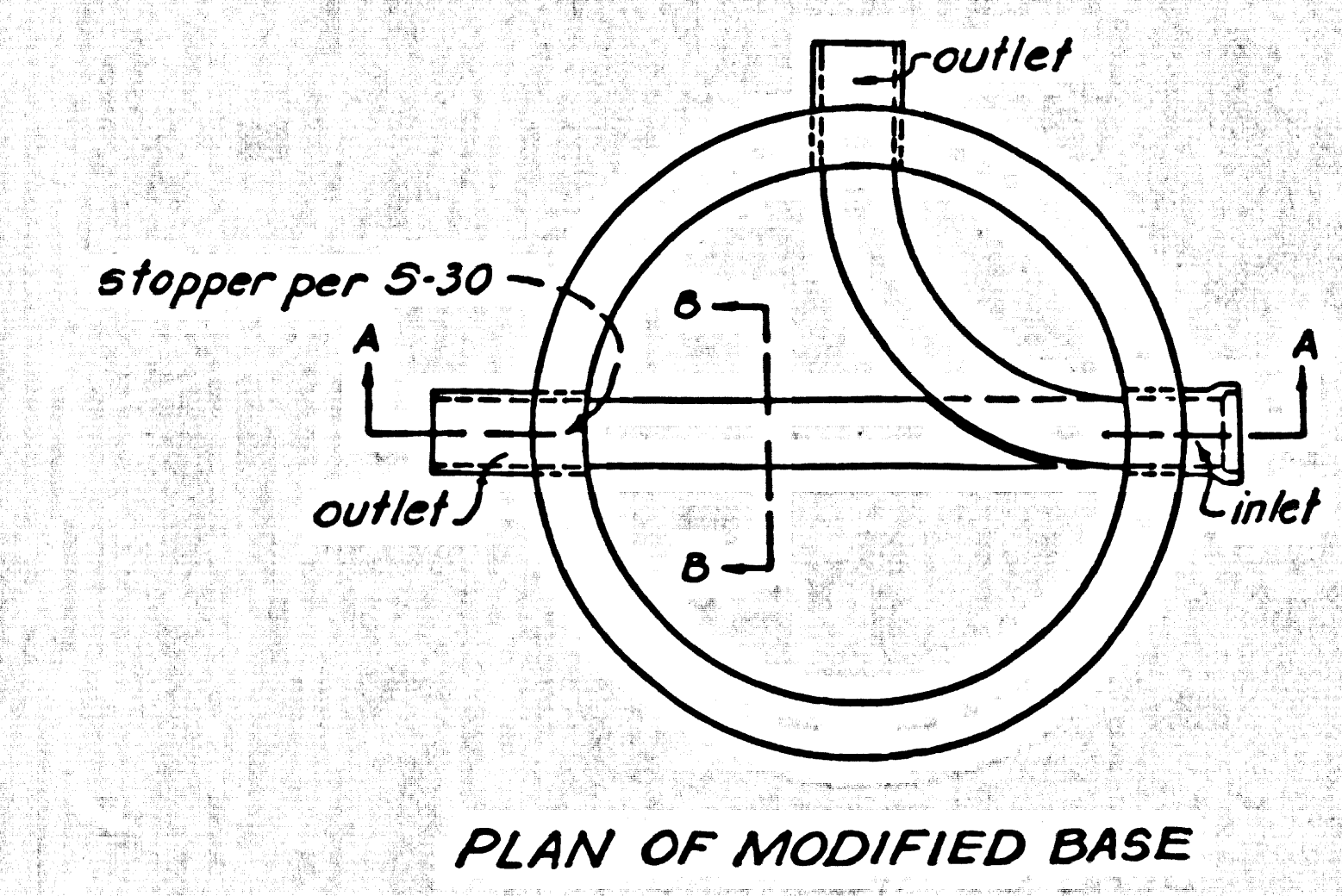
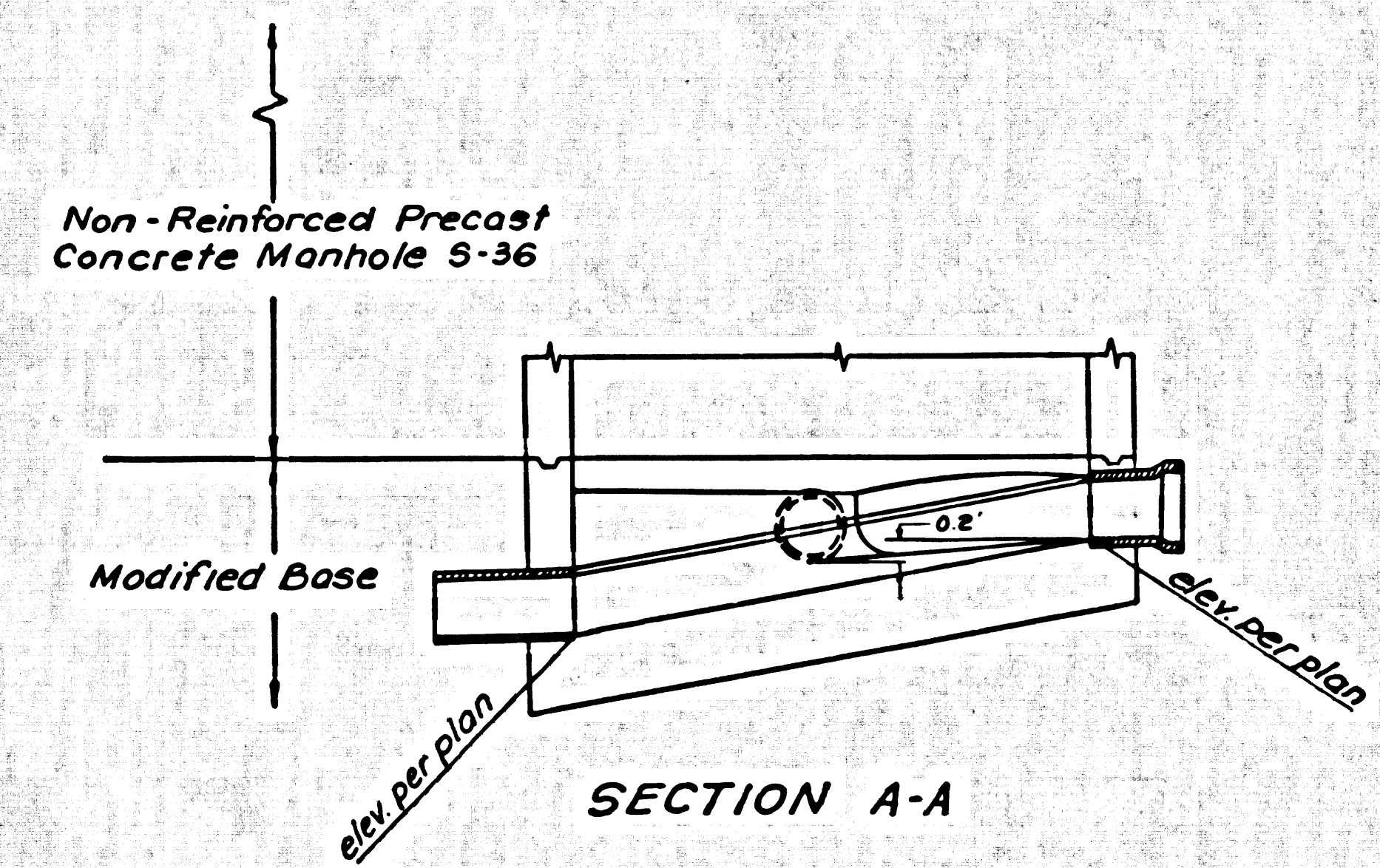


TRACT No. 28784
M.B. 823 P65. 81482



TRACT No. 25481

45165



45166