

B.M. 01-729 (1972) ELEV. 2360.806
 ROAD MON. IN WELL 8" ON S.E.
 COR. 30TH ST. WEST & AVE. J-B NO.
 SOUTH 50' EAST & INTERSECTION.
 LANCASTER QUAD. 1972.

Contractor agrees that he shall assume sole and complete responsibility for job site conditions during the course of construction of this project, including safety of all persons and property; that this requirement shall apply continuously and not be limited to normal working hours; and that the Contractor shall defend, indemnify and hold the Owner and the Engineer harmless from any and all liability, real or alleged, in connection with the performance of work on this project, excepting for liability arising from the sole negligence of the Owner or the Engineer.



GENERAL NOTES:

1. REVISIONS ARE IN PINK ABOVE U.S.C. & G.S. SEA LEVEL DATUM OF 1929.
2. NO REVISIONS SHALL BE MADE IN THESE PLANS WITHOUT THE APPROVAL OF THE COUNTY ENGINEER.
3. NO REPRESENTATIVE OF THE COUNTY ENGINEER WILL SURVEY OR LAY OUT ANY PORTION OF THE WORK.
4. GRADES TO WHICH THE IMPROVEMENT IS TO BE CONSTRUCTED ARE SHOWN ON PLANS AND HOUSES GRADE POINTS FOR TOP OF CURB, CENTER LINE OF STREETS, OR CENTER LINE OF ALLEYS ARE SHOWN BY CIRCLES OR SQUARES. AT ALL POINTS BETWEEN DESIGNATED POINTS THE GRADE SHALL BE ESTABLISHED SO AS TO CONFORM TO A STRAIGHT LINE DRAWN BETWEEN SAID DESIGNATED POINTS.
5. THE PRIVATE ENGINEER SHALL FURNISH THE COUNTY ENGINEER WITH GRADE SHEETS AND STATIONING FOR ALL HOUSE LATERALS AND "T" OR "T" BRANCHES AND SHALL PROVIDE GRADES FOR THEM AT THEIR PROPER LOCATIONS WITH STATIONING PLANNED THEREON. ALL HOUSE LATERALS SHALL BE CONSTRUCTED IN A STRAIGHT ALIGNMENT AT RIGHT ANGLES FROM THE MAIN LINE SEWER EXCEPT AS SHOWN ON THE PLANS. HOUSE LATERALS FROM CHIMNEYS SHALL NOT HAVE AN ANGLE OF LESS THAN 45° WITH THE MAIN LINE SEWER. ANY CHANGE IN ALIGNMENT SHALL BE REQUESTED IN WRITING BY THE PRIVATE ENGINEER.
6. THE PRIVATE ENGINEER SHALL FURNISH THE HOUSE LATERAL BOTH AT THE PROPERTY LINE BELOW THE TOP OF CURB ELEVATION FOR EACH HOUSE LATERAL ON THE GRADE SHEET.
7. BEFORE WORK CAN BE STARTED, THE CONTRACTOR MUST OBTAIN A PERMIT TO EXCAVATE IN COUNTY STREETS FROM THE L.A. COUNTY ROAD DEPT., DISTRICT OFFICE NO. 8, AND PAY A FEE TO THE COUNTY ENGINEER, 820 S. HEMLOCK ST., DISTRICT OFFICE, CHIEF OF CONSTRUCTION INSPECTION AND RECORD PLANS.
8. IF WORK IS TO BE DONE ON A STATE HIGHWAY, A PERMIT MUST BE OBTAINED FROM THE STATE OF CALIFORNIA, DIVISION OF HIGHWAYS, 140 SOUTH SPRING STREET, SACRAMENTO, CALIFORNIA.
9. APPROVAL OF THIS PLAN BY THE COUNTY OF LOS ANGELES DOES NOT CONSTITUTE A REPRESENTATION AS TO THE ACCURACY OF THE LOCATION OR OF THE EXISTENCE OR NON-EXISTENCE OF ANY UNDERGROUND UTILITY PIPE, OR STRUCTURE WITHIN THE LIMITS OF THIS PROJECT. THE NOTE APPLIES TO ALL PAGES.
10. REFER TO SECTION 11-B.1 OF THE STANDARD SPECIFICATIONS, REGARDING SAFETY OFFICER.

PROFILE, ALIGNMENT AND GRADE OF
SANITARY SEWERS PAGE 1
 CONSTRUCTED IN

TRACT NO. 30859
PRIVATE CONTRACT NO. 8891

W.S. 71
 2 SHEETS, 4 PAGES
 SCALE: HORIZ. 1" = 40' VERT. 1" = 4'
 JANUARY, 1973
 PREPARED IN THE OFFICES OF
SCHOR ENGINEERS
 1369 VICTORY BLVD.
 VAN NUYS, CALIF. 91411
 BY: *Harvey T. Brandt*
 REG. C. E. No. 12235

48869

THE FOLLOWING LATEST REVISED STANDARD PLANS ON FILE IN THE OFFICE OF THE COUNTY ENGINEER SHALL APPLY IN THE CONSTRUCTION OF THIS PROJECT:

LEADS	5.3
MINIMUM PUBLIC SAFETY REQUIREMENTS	5.3
BACK MANHOLES	5.3
STANDARD MANHOLE STEP	5.7
STODDING FOR SEWER PIPE	5.8
CHANGING AND ENCASING	5.8
WYS OF THE SEWER	5.8
ALLOWABLE TRENCH WIDTHS	5.8
LOCKING MANHOLE FRAMES AND COVERS	5.8
NON-REINFORCED PRECAST CONCRETE MANHOLES	5.8

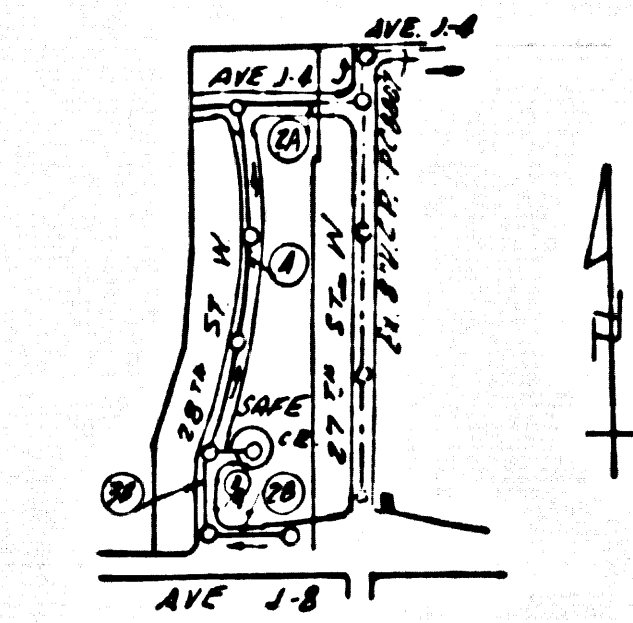
CONSTRUCTION NOTES:

1. WORK SHALL BE CONSTRUCTED ACCORDING TO THE STANDARD SPECIFICATIONS FOR PUBLIC WORKS CONSTRUCTION 1970 EDITION WITH THE SUPPLEMENTED AND COUNTY ENGINEER SPECIAL PROVISIONS FOR THE CONSTRUCTION OF SANITARY SEWER SYSTEMS, APRIL 10, 1972, AND SHALL BE PROSECUTED ONLY IN THE PRESENCE OF THE COUNTY ENGINEER.
2. THE CONTRACTOR SHALL NOTIFY THE CONSTRUCTION DIVISION BY TELEPHONE, IN VANUYS 9-0-8, EXT. 8129, AT LEAST TWENTY-FOUR HOURS BEFORE STARTING ANY WORK UNDER THIS CONTRACT.
3. HOUSE LATERALS TO BE CONSTRUCTED WITH INVERTS AT PROPERTY LINE 6 FEET BELOW CURB GRADE EXCEPT AS NOTED.
4. WYS ON THE MANHOLES MAY BE USED FOR CONNECTIONS TO MANHOLE SEWERS EXCEPT AS NOTED.
5. ALL STRUCTURES SHALL BE EITHER BRICK MANHOLES PER 2.3 OR PRECAST CONCRETE MANHOLES PER 2.3.1, 2.3.2, 2.3.3, 2.3.4, 2.3.5, 2.3.6, 2.3.7, 2.3.8, 2.3.9, 2.3.10, 2.3.11, 2.3.12, 2.3.13, 2.3.14, 2.3.15, 2.3.16, 2.3.17, 2.3.18, 2.3.19, 2.3.20, 2.3.21, 2.3.22, 2.3.23, 2.3.24, 2.3.25, 2.3.26, 2.3.27, 2.3.28, 2.3.29, 2.3.30, 2.3.31, 2.3.32, 2.3.33, 2.3.34, 2.3.35, 2.3.36, 2.3.37, 2.3.38, 2.3.39, 2.3.40, 2.3.41, 2.3.42, 2.3.43, 2.3.44, 2.3.45, 2.3.46, 2.3.47, 2.3.48, 2.3.49, 2.3.50, 2.3.51, 2.3.52, 2.3.53, 2.3.54, 2.3.55, 2.3.56, 2.3.57, 2.3.58, 2.3.59, 2.3.60, 2.3.61, 2.3.62, 2.3.63, 2.3.64, 2.3.65, 2.3.66, 2.3.67, 2.3.68, 2.3.69, 2.3.70, 2.3.71, 2.3.72, 2.3.73, 2.3.74, 2.3.75, 2.3.76, 2.3.77, 2.3.78, 2.3.79, 2.3.80, 2.3.81, 2.3.82, 2.3.83, 2.3.84, 2.3.85, 2.3.86, 2.3.87, 2.3.88, 2.3.89, 2.3.90, 2.3.91, 2.3.92, 2.3.93, 2.3.94, 2.3.95, 2.3.96, 2.3.97, 2.3.98, 2.3.99, 2.3.100.
6. PROVIDE SLATES ON THE PROPERTY LINE OR PROPERTY LINES PRODUCED AT RIGHT ANGLES TO THE SEWER LINE AT THE CENTER LINE OF EACH MANHOLE.
7. MANHOLES PER 2.3.1 THROUGH 2.3.100 SHALL BE 48" OR 60" IN DIAMETER UNLESS OTHERWISE SPECIFIED.
8. WYTHES CLAY PIPE JOINTS SHALL BE TYPE "T", "C", OR "B" PER STANDARD SPECIFICATIONS SECTION 200-2.
9. IF A POWER POLE IS WITHIN THREE FEET OF THE SEWER, THE SEWER SHALL BE ENCASED, PER 2.3.1, CASE II, TWO FEET ON EACH SIDE FROM THE POINT OF INTERFERENCE.
10. IF DURING THE COURSE OF CONSTRUCTION IT IS DETERMINED THAT THERE IS LESS THAN FOUR FEET OF COVER OVER THE TOP OF A MAIN LINE OR HOUSE LATERAL V.C.P. SEWER WHICH IS NOT INDICATED ON THE PLANS, THE PIPE SHALL BE ENCASED PER 2.3.1, CASE II UNLESS OTHERWISE APPROVED BY THE COUNTY ENGINEER.
11. ALL JOINTS BETWEEN CLAY PIPE AND WYTHES CLAY PIPE SHALL BE MADE WITH A RUBBER SURVEY JOINT, TYPE "C" OR "B", WITH RUBBERING IF NECESSARY PER STANDARD SPECIFICATIONS, SECTION 200-2.
12. SEWERS TO BE SET FOR GRADE PER SECTION 200-2.3.2 OF THE STANDARD SPECIFICATIONS AND SPECIAL PROVISIONS.
13. DESIGNATE ALL TRENCHES WITHIN PAVED AREAS TO MEET L.A. COUNTY ROAD DEPT. OF CALIFORNIA STATE HIGHWAY REQUIREMENTS IN ACCORDANCE WITH PERMITS.
14. FULL COMPLIANCE WITH SECTION 306-1.13 OF THE SPECIAL PROVISIONS WILL BE REQUIRED FOR BACKFILL IN STREETS. CERTIFICATION OF BACKFILL COMPLETION AND SAND EQUIVALENTS BY A QUALIFIED, REGISTERED TESTING LABORATORY SHALL BE PROVIDED BY THE PERMITTEE PRIOR TO THE ISSUANCE OF A CERTIFICATE OF PARTIAL ACCEPTANCE.

No connections for the disposal of industrial wastes shall be made to sewers shown on these drawings without written permission from the Chief Engineer and General Manager of the County Sanitation Districts.

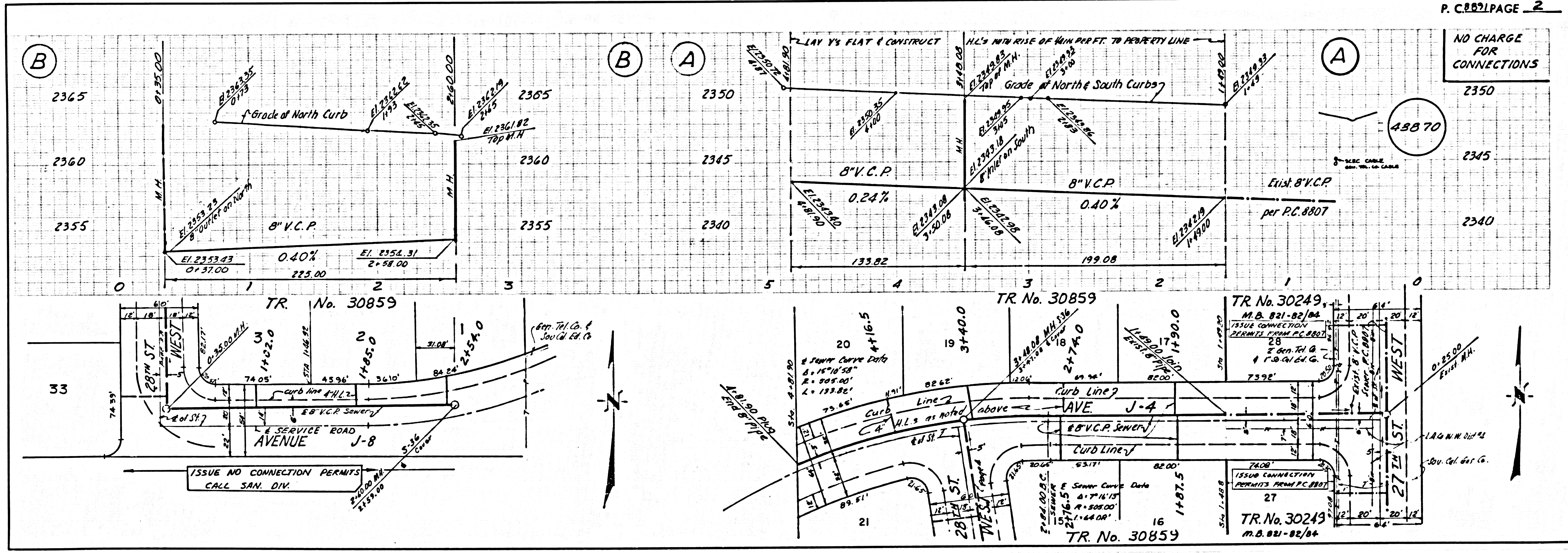
County Sanitation Districts shall be notified prior to the following so that required inspection can be made (Phone 337-1923 - 4200000)

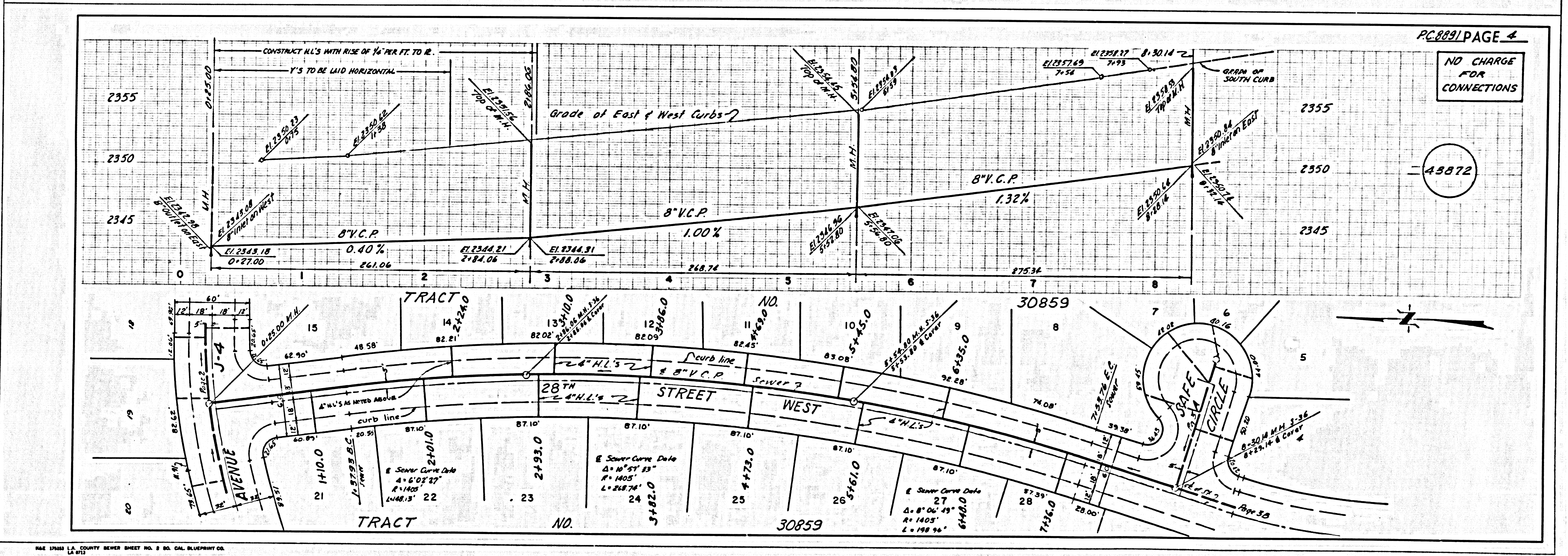
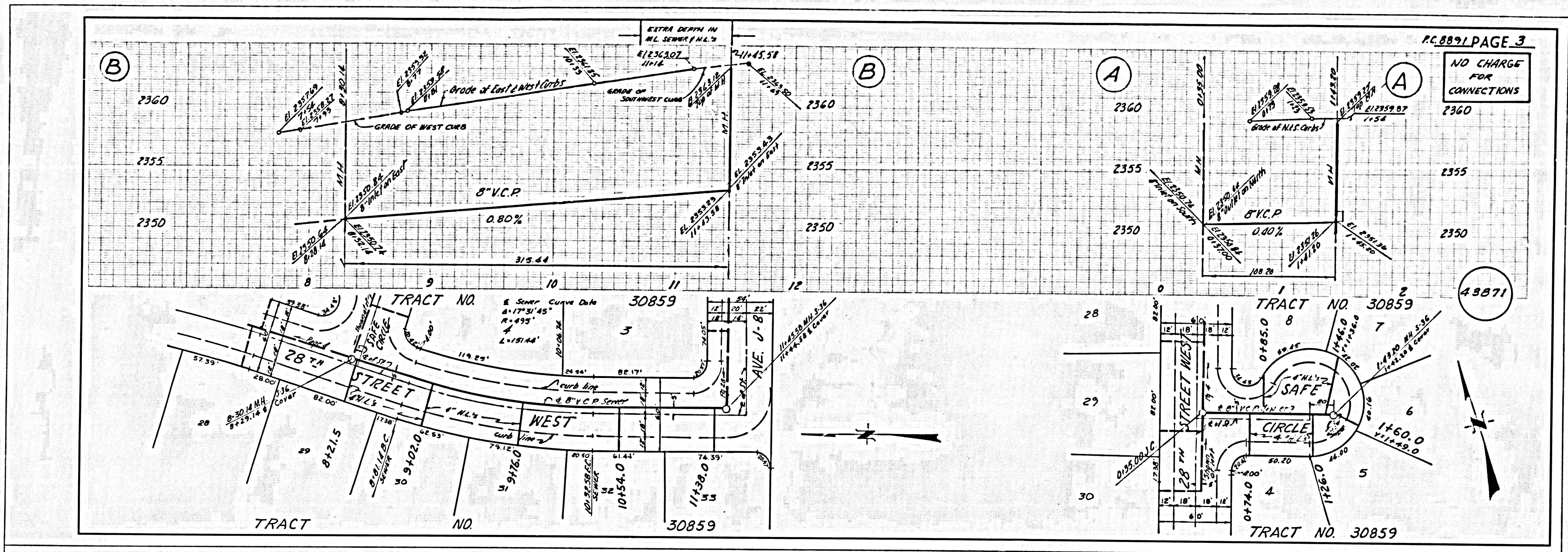
ACCEPTANCE OF THE PROJECT



INDEX MAP
 SCALE: 1" = 800'
 P.C. 8891
 TRACT NO. 30859

COUNTY OF LOS ANGELES, CALIFORNIA
 HARVEY T. BRANDT, COUNTY ENGINEER
 JOHN D. PARKHURST, CHIEF ENGINEER
 APPROVED: *Harvey T. Brandt* 7/21/73
 APPROVED: *John D. Parkhurst* 7/21/73
 CHECKED: *R. L. Kopych* 7/21/73
 REG. C. E. NO. 18742
 LANCASTER, BLDG. DIST. 8
 1 N 0250 02





BASE 1988 L.A. COUNTY BEWER SHEET NO. 8 SO. CAL. BLUEPRINT CO. LA 8712