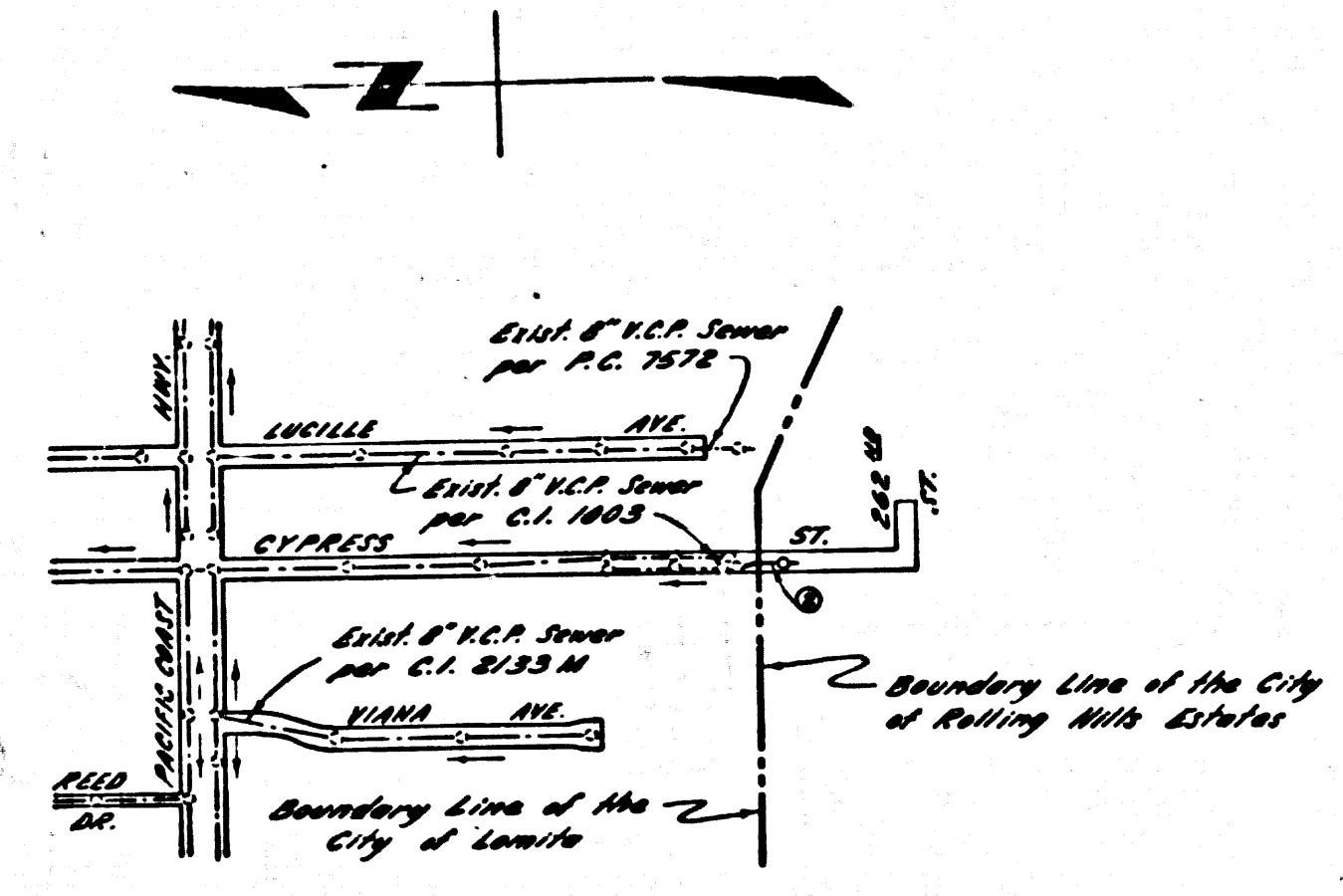


B.M. BY 3530 ELEV. 131.422
 Lead & Nail, North Curb of Pacific
 Coast Hwy, 5' S. West of C.R. & N.W. Cor.
 of Pacific Coast Hwy. & Cypress Street.
 PALOS VERDES QUAD. 1970 ADJ.



INDEX MAP
 C.C. No 8898
 Scale: 1" = 600'

REVISION # 1 5/11/73
 LOWERED GRADE OF 8" V.C.P.
 SEWER SO 4" H.C. COULD CLEAR
 10" WATER LINE.
 APPROVED: *K.P. Murphy* 5-11-73
 R.C.C. No 15744

No connections for the disposal of
 industrial wastes shall be made to
 sewers shown on these drawings
 without written permission from the
 Chief Engineer and General Manager
 of the County Sanitation Districts.

 County Sanitation Districts shall be
 notified prior to the following so
 that required inspection can be made
 (Phone 537-1025 - - 538-1151)

ACCEPTANCE OF THE PROJECT

GENERAL NOTES:

DOUBLE SCALE

ALL MANHOLES SHALL BE EITHER BRICK PER S-3 OR PRECAST CONCRETE PER S-34, EXCEPT AS NOTED.
 "T" OR "Y" BRANCHES MAY BE USED FOR CONNECTIONS TO MAIN LINE SEWER, EXCEPT AS NOTED.
 VITRIFIED CLAY PIPE JOINTS SHALL BE TYPE "D", "F", OR "G" PER SECTION 306.2 OF STANDARD SPECIFICATIONS.
 ALL JOINTS BETWEEN CAST IRON PIPE AND VITRIFIED CLAY PIPE SHALL BE MADE WITH A RUBBER SLEEVE JOINT, TYPE "C" OR "D" (WITH
 BUSHING IF NECESSARY) PER SECTION 306.2 OF STANDARD SPECIFICATIONS.
 SEWERS TO BE TESTED FOR LEAKAGE PER SECTION 306.2.2 OF STANDARD SPECIFICATIONS AND SPECIAL PROVISIONS.
 IF A POWER POLE IS WITHIN THREE FEET OF THE SEWER, THE SEWER SHALL BE ENCASED, PER S-23 CASE II, TWO FEET ON EACH SIDE
 FROM THE POINT OF INTERFERENCE.
 CONSTRUCT HOUSE LATERALS WITH INVERT AT PROPERTY LINE & FEET BELOW CURB GRADE, EXCEPT AS NOTED.
 APPEARANCE OF THIS PLAN BY THE COUNTY OF LOS ANGELES DOES NOT CONSTITUTE A REPRESENTATION OR
 GUARANTEE OF THE ACCURACY OF THE SECTION OR OF THE EXTENT OF ANY UNDERGROUND
 UTILITY PIPES, OR STRUCTURE WITHIN THE LIMITS OF THIS PROJECT. THIS NOTE APPLIES TO ALL PAGES.
 REFER TO SECTION 7.10.1 OF THE STANDARD SPECIFICATIONS AND SECTION 306.1.1 OF THE
 COUNTY ENGINEER SPECIAL PROVISIONS REGARDING SAFETY UNLOCKS.
 ALL HOUSE LATERALS SHALL BE CONSTRUCTED IN A STRAIGHT ALIGNMENT AT RIGHT ANGLES FROM THE MAIN LINE SEWER EXCEPT AS
 SHOWN ON THE PLANS. HOUSE LATERALS FROM CHIMNEYS SHALL NOT HAVE AN ANGLE OF LESS THAN 45 DEGREES WITH THE
 MAIN LINE SEWER.
 ALL CONCRETE CROSS CUTTERS, CURBS, GUTTERS, PAYMENTS, AND DRIVEWAYS SHALL BE TUNNELED OR JACKED PER LOS ANGELES COUNTY
 ROAD DEPARTMENT REQUIREMENTS.

STREET RESURFACING:

STREET RESURFACING METHODS SHALL BE IN ACCORDANCE WITH SECTION 306.1.12 OF THE SPECIAL PROVISIONS.
 FINAL STREET RESURFACING IN ANY LOCATION SHALL BE COMPLETED WITHIN 30 DAYS AFTER COMPLETION OF TRENCH BACKFILL.
 THE RESURFACING AREA SHALL BE SEALED WITH #1 EMULSION AND 1/2 INCH CRUSHED ROCK.
 RESURFACING SCHEDULE: RESURFACE TRENCH WITHIN PAVED AREA WITH CEMENT CONCRETE PAVEMENT 8 INCHES IN THICK-
 NESS. REPLACEMENT IN ACCORDANCE WITH L.A. COUNTY ROAD DEPT. STANDARD PLAN NO. 40-01

COLLECT CHARGES
 AS INDICATED

THE FOLLOWING LATEST REVISED STANDARD PLANS ON FILE IN THE OFFICE OF COUNTY ENGINEER SHALL APPLY IN THE CONSTRUCTION
 OF THIS PROJECT:

LEGEND	S-1	CRACKING AND ENCASUREMENT	S-23
MINIMUM PUBLIC SAFETY REQUIREMENT	S-2	STANDARD WYE OR TEE SUPPORT	S-24
BRICK MANHOLE	S-3	ALLOWABLE TRENCH WIDTHS	S-25
MANHOLE STEP	S-17	LOCKING MANHOLE FRAME AND COVER	S-26
BEDDING FOR SEWER PIPE	S-21	NON-REINFORCED PRECAST CONCRETE MANHOLE	S-28
SPECIAL SUPPORT AND RESTRICTION	S-22		

THE CONTRACTOR SHALL OBTAIN THE FOLLOWING PERMITS PRIOR TO CONSTRUCTION:

- LOS ANGELES COUNTY ROAD DEPARTMENT (SEE EXEMPT)
-

THE UNDERGROUND UTILITY COMPANIES WITHIN THE LIMITS OF THIS PROJECT ARE AS FOLLOWS:

- L.A. COUNTY WATERWORKS DISTRICT NO. 18
- SAN CALIF. GAS CO.
- STANDARD OIL CO.

REFERENCE
CASH CONTRACT NO. 8898

SANITARY SEWERS
 TO BE CONSTRUCTED IN
CYPRESS STREET
 AND OTHER RIGHTS OF WAY

49333

1 SHEET; 2 PAGES

SCALE
 VERT. 1" = 6'
 HORIZ. 1" = 40'

FEBRUARY, 1973

CITIES OF LOMITA AND ROLLING HILLS EST.
 COUNTY OF LOS ANGELES, CALIFORNIA
 HARVEY T. BRANDT CITY ENGINEER

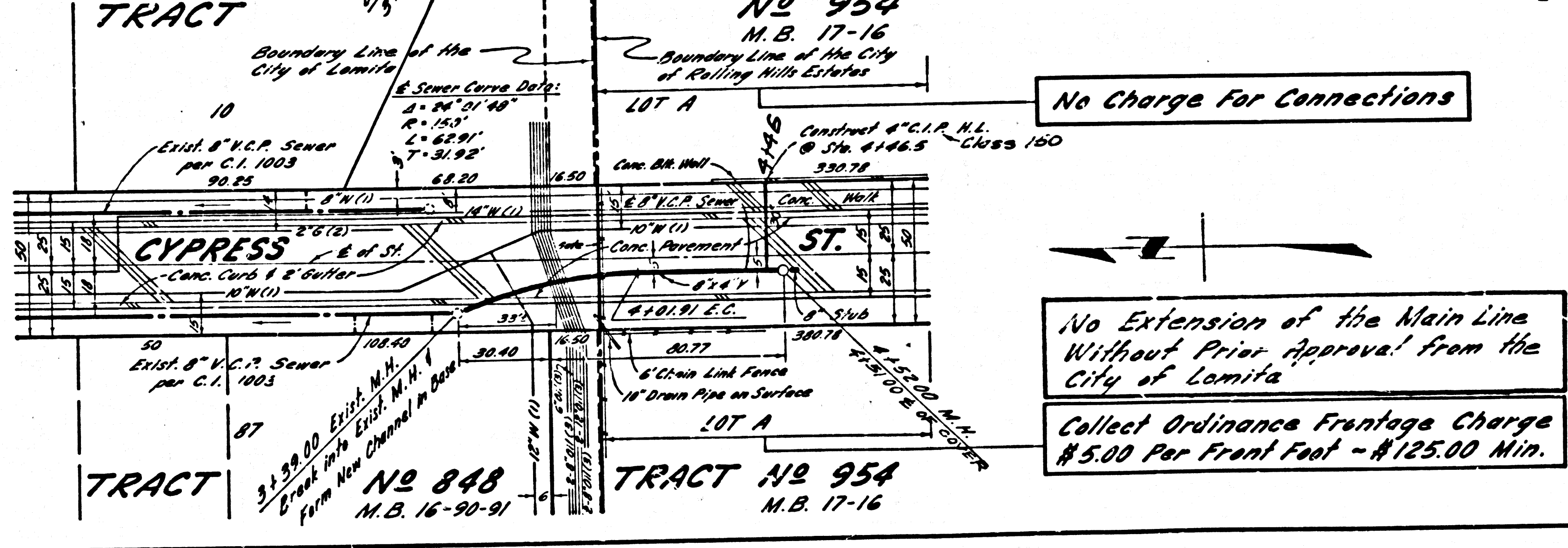
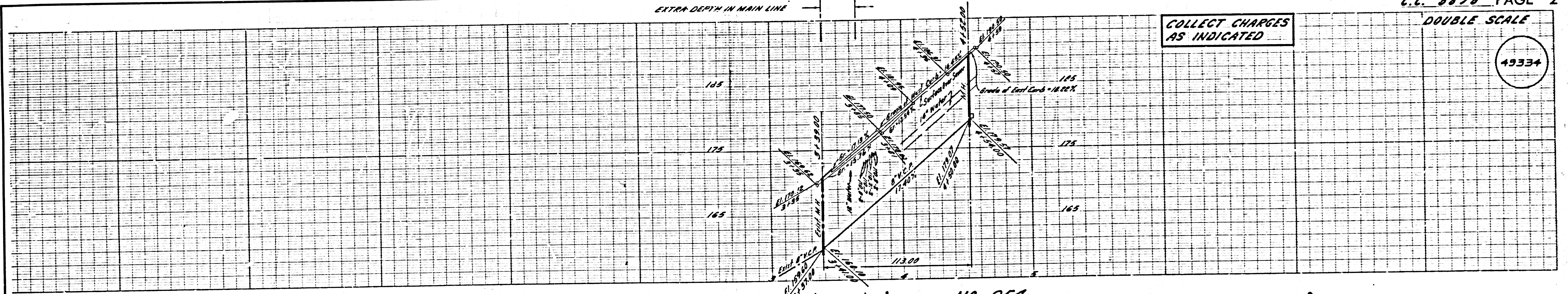
APPROVED: *Robert J. Hall* 3-1-73
 REGIONAL ENGINEER
 DESIGNED: *K.P. Murphy* 2-23-73
 REG. C. E. NO. 15744

APPROVED: *John D. Parkhurst*
 JOHN D. PARKHURST
 CHIEF ENGINEER OF COUNTY
 SANITATION DISTRICT NO. 8
 OFFICE ENGINEER

NOTES:
 WORK SHALL BE CONSTRUCTED ACCORDING TO THE STANDARD SPECIFICATIONS FOR PUBLIC WORKS CONSTRUCTION (1970 EDITION
 WITH 1972 SUPPLEMENTS) AND COUNTY ENGINEER SPECIAL PROVISIONS FOR THE CONSTRUCTION OF SANITARY SEWERS DATED APRIL
 16, 1972 AND SHALL BE PROSECUTED ONLY IN THE PRESENCE OF THE COUNTY ENGINEER.
 THE CONTRACTOR SHALL NOTIFY THE CONSTRUCTION DIVISION BY TELEPHONE 429-4747, EXT. 21589 AT LEAST 24 HOURS BEFORE
 STARTING ANY WORK UNDER THIS CONTRACT.
 GRADES TO WHICH THIS IMPROVEMENT IS TO BE CONSTRUCTED ARE SHOWN ON PLANS AND PROFILES. GRADE POINTS FOR TOP
 OF CURB, CENTER LINE OF STREET OR CENTER LINE OF ALLEY ARE SHOWN BY CIRCLES ON PROFILES. AT ALL POINTS BETWEEN DESIGNATED
 POINTS THE GRADE SHALL BE ESTABLISHED SO AS TO COMFORM TO A STRAIGHT LINE DRAWN BETWEEN SAID DESIGNATED POINTS.
 ELEVATIONS ARE IN FEET ABOVE U.S.C. & G.S. SEA LEVEL DATUM OF 1929.
 THIS DRAWING AND THE DATA HEREON ARE HEREBY MADE A PART OF THE SPECIFICATIONS.

LAYOUT	C. JANG	FEB. '73	CHECKED	A. STOCHLIA	FEB. '73
TRACED	C. JANG	FEB. '73	MAINTENANCE	A. B. 7553	W.S. 28-73
F.B.					

LOMITA BUILDING DISTRICT NO. 18



No Extension of the Main Line
 Without Prior Approval from the
 City of Lomita
 Collect Ordinance Franchise Charge
 \$5.00 Per Front Foot - \$125.00 Min.