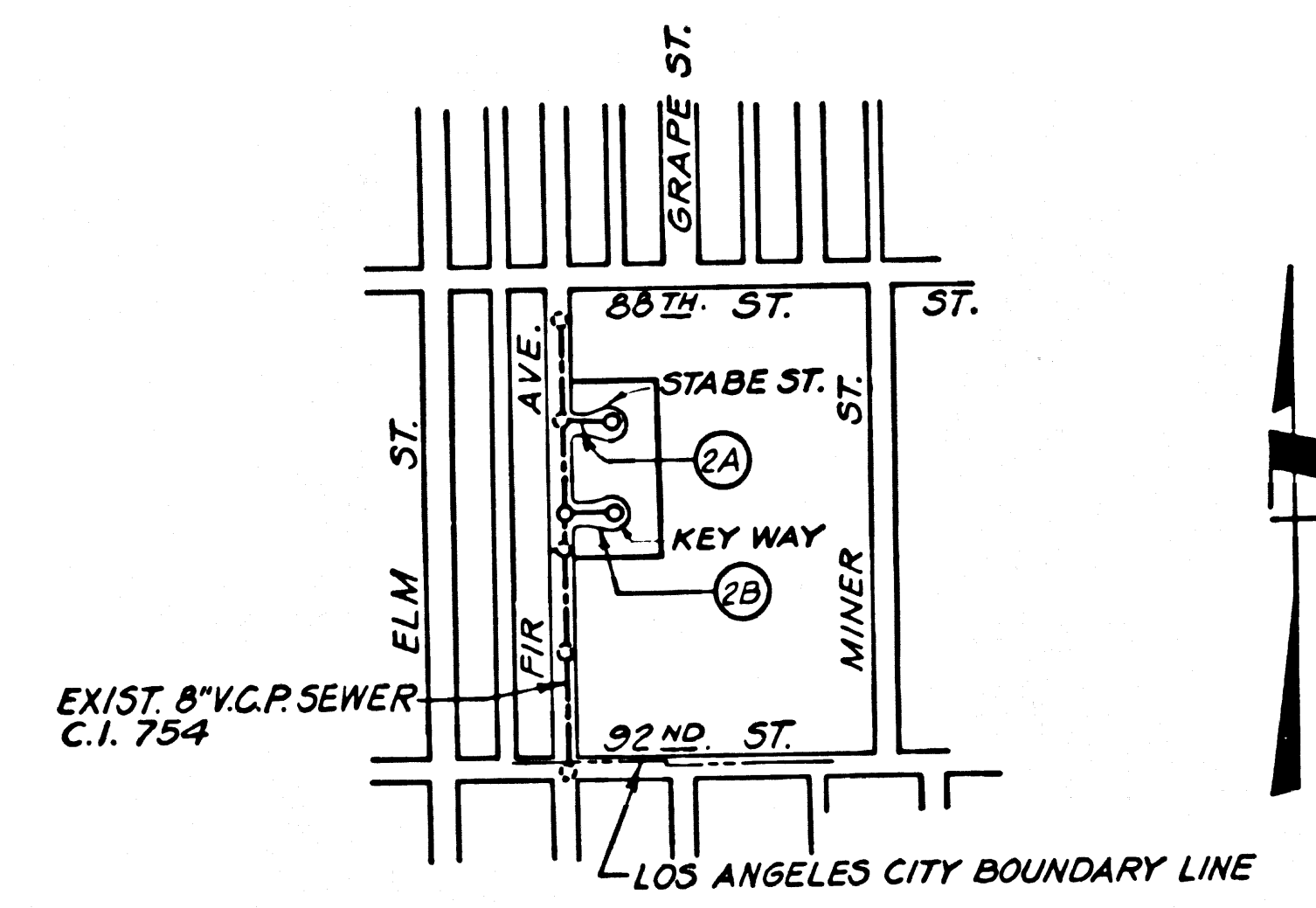


TO BE CONSTRUCTED IN
TRACT NO. 29281
PRIVATE CONTRACT NO. 8904

W.S. 7
1 SHEET 2 PAGES
SCALE: VERT. 1" = 4'
HORIZ. 1" = 40'
FEBRUARY, 1973
PREPARED IN THE OFFICES OF
MEJIA, SHREAN & ASSOCIATES
766 BEVERLY BLVD.
LOS ANGELES, CALIFORNIA 90038
BY: *H. J. Shuman*
REG. C. E. No. 19341

44985

B.M. LACRD BY 5737 ELEV. 117.209
L. & T. E CURB @ FT. ± N. BCR @ NE COR.
92 ND. ST. & FIR AVE. 20' E & 33' ± N.
& INT.
WATTS QUAD. 19 22



INDEX MAP
Scale: 1" = 600'
TRACT No. 29281

FULL COMPLIANCE WITH SECTION 306-19.3 OF THE SPECIAL PROVISIONS WILL BE REQUIRED FOR BACKFILL IN STREETS. CERTIFICATION OF BACKFILL COMPACTION AND SAND EQUIVALENTS BY A QUALIFIED, REGISTERED TESTING LABORATORY SHALL BE PROVIDED BY THE PERMITTEE PRIOR TO THE ISSUANCE OF A CERTIFICATE OF PARTIAL ACCEPTANCE.

NO CONNECTION FOR THE DISPOSAL OF INDUSTRIAL WASTES SHALL BE MADE TO SEWERS UNLESS SUCH CONNECTIONS UNTIL A PERMIT FOR INDUSTRIAL WASTE DISPOSURE HAS BEEN ISSUED BY THE SANITATION DISTRICTS FOR SUCH CONNECTION.

CONNECTION TO THE DISTRICTS SHALL BE NOTIFIED 72 HOURS PRIOR TO THE COMMENCEMENT OF SUCH CONNECTION. (PROVIDE - 638 1161)

ACCEPTANCE OF THE PROJECT

GENERAL NOTES:

- ELEVATIONS ARE IN FEET ABOVE U.S.C. & G.S. MEAN LEVEL DATUM OF 1929.
- NO REVISIONS SHALL BE MADE IN THESE PLANS WITHOUT THE APPROVAL OF THE COUNTY ENGINEER.
- NO REPRESENTATIVE OF THE COUNTY ENGINEER WILL SURVEY OR LAY OUT ANY PORTION OF THE WORK.
- GRADES TO WHICH THIS IMPROVEMENT IS TO BE CONSTRUCTED ARE SHOWN ON PLANS AND PROFILES. GRADE POINTS FOR TOP OF CURBS, CENTER LINE OF STREETS, OR CENTER LINE OF ALLEYS ARE SHOWN BY CIRCLES ON PROFILES AT ALL POINTS BETWEEN DESIGNATED POINTS. THE GRADE SHALL BE ESTABLISHED SO AS TO CONFORM TO A STRAIGHT LINE DRAWN BETWEEN SAID DESIGNATED POINTS.
- THE PRIVATE ENGINEER SHALL FURNISH THE COUNTY ENGINEER WITH GRADE SHEETS AND STATIONING FOR ALL HOUSE LATERALS AND "T" OR "T" BRANCHES AND SHALL PROVIDE STAKES FOR THEM AT THEIR PROPER LOCATIONS WITH STATIONING PLAINLY MARKED. ALL HOUSE LATERALS SHALL BE CONSTRUCTED IN A STRAIGHT ALIGNMENT AT RIGHT ANGLES FROM THE MAIN LINE SEWER EXCEPT AS SHOWN ON THE PLANS. HOUSE LATERALS FROM CHIMNEYS SHALL NOT HAVE AN ANGLE OF LESS THAN 45° WITH THE MAIN LINE SEWER. ANY CHANGE IN ALIGNMENT SHALL BE REQUESTED IN WRITING BY THE PRIVATE ENGINEER.
- THE PRIVATE ENGINEER SHALL FURNISH THE HOUSE LATERAL DEPTH AT THE PROPERTY LINE BELOW THE TOP OF CURB ELEVATION FOR EACH HOUSE LATERAL ON THE GRADE SHEET.
- BEFORE WORK CAN BE STARTED, THE CONTRACTOR MUST OBTAIN A PERMIT TO EXCAVATE IN COUNTY STREETS FROM THE L. A. COUNTY ROAD DEPT., DISTRICT OFFICE NO. 3, AND PAY A FEE TO THE COUNTY ENGINEER, ROOM 718, 9150 E. IMPERIAL HWY., DOWNHAY, OR PALOS VERDES, CERRITOS, CALIF. REGIONAL OFFICE, TO COVER THE COST OF CONSTRUCTION INSPECTION AND RECORD PLANS.
- IF WORK IS TO BE DONE IN A STATE HIGHWAY, A PERMIT MUST BE OBTAINED FROM THE STATE OF CALIFORNIA, DIVISION OF HIGHWAYS, 180 SOUTH SPRING STREET, LOS ANGELES, CALIFORNIA.
- APPROVAL OF THIS PLAN BY THE COUNTY OF LOS ANGELES DOES NOT CONSTITUTE A REPRESENTATION AS TO THE ACCURACY OF THE LOCATION OF OR THE EXISTENCE OR NON-EXISTENCE OF ANY UNDERGROUND UTILITY PIPE, OR STRUCTURE WITHIN THE LIMITS OF THIS PROJECT. THIS NOTE APPLIES TO ALL PAGES.
- REFER TO SECTION 718.41 OF THE STANDARD SPECIFICATIONS, REGARDING SAFETY ORDERS.

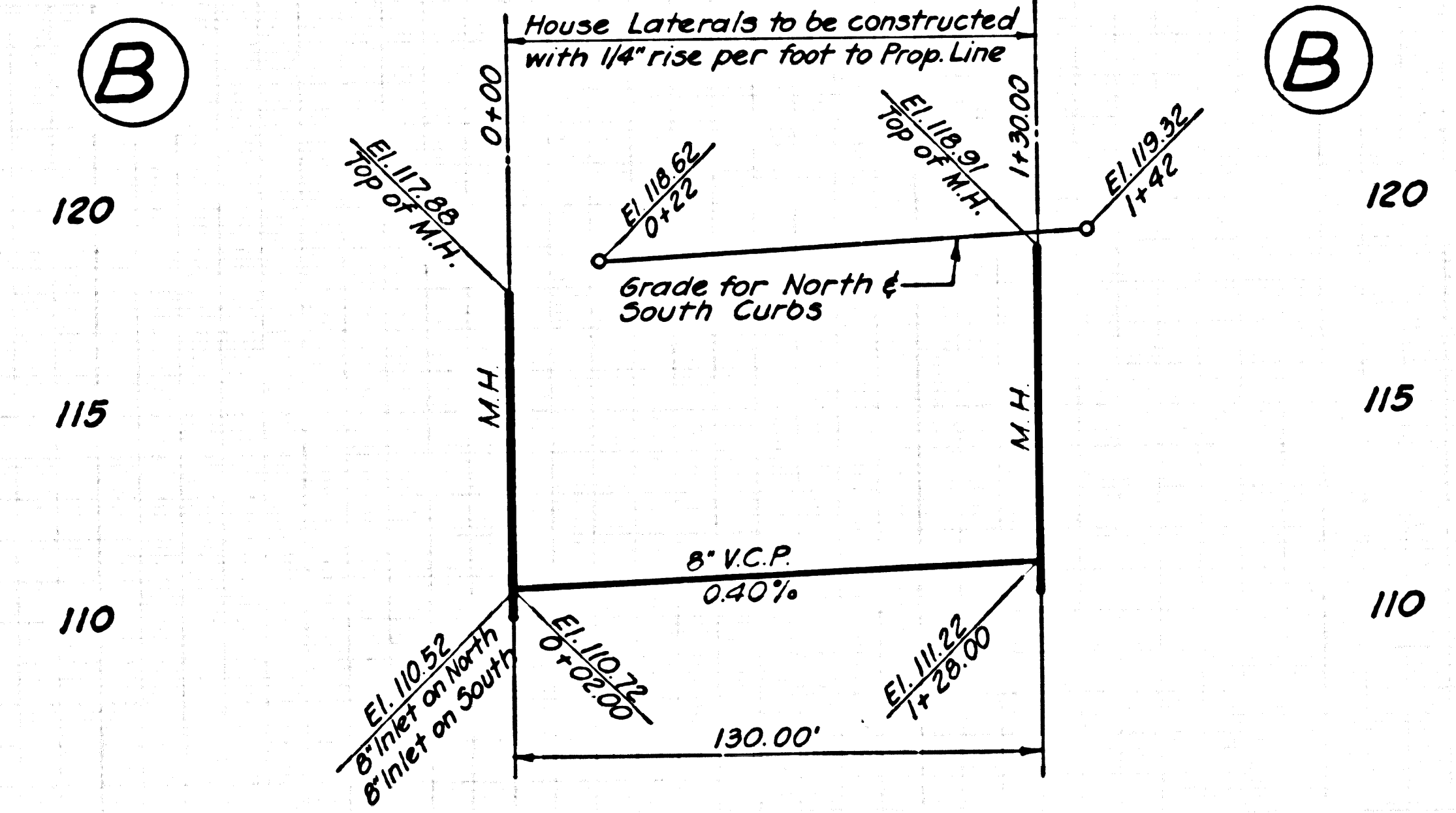
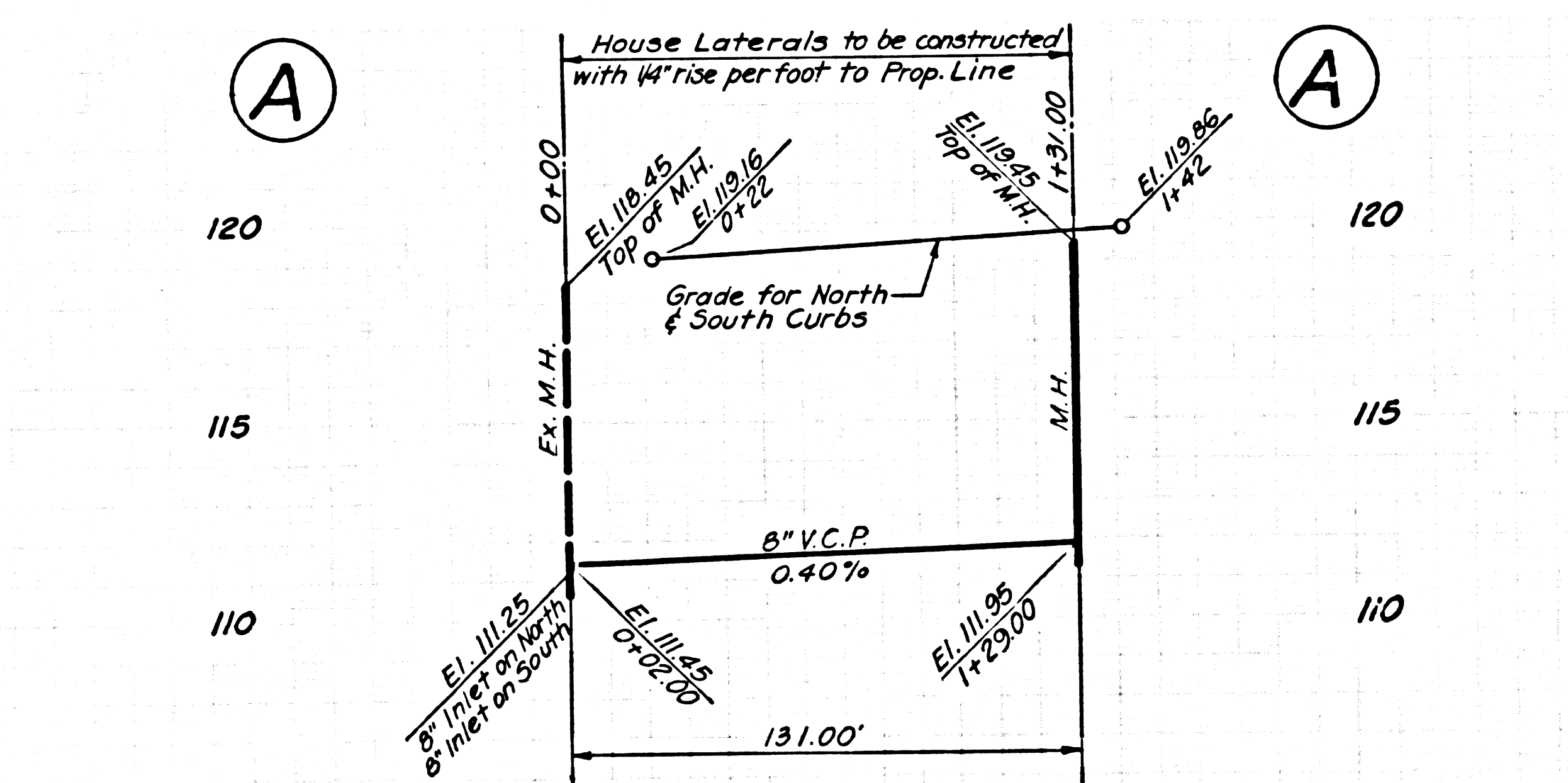
CONSTRUCTION NOTES:

- WORK SHALL BE CONSTRUCTED ACCORDING TO THE STANDARD SPECIFICATIONS FOR PUBLIC WORKS CONSTRUCTION 1970 EDITION WITH 7-7E SUPPLEMENTS AND COUNTY ENGINEER SPECIAL PROVISIONS FOR THE CONSTRUCTION OF SANITARY SEWERS DATED APRIL 10, 1972, AND SHALL BE PROSECUTED ONLY IN THE PRESENCE OF THE COUNTY ENGINEER.
 - THE CONTRACTOR SHALL NOTIFY THE CONSTRUCTION DIVISION BY TELEPHONE, 374-7283, AT LEAST TWENTY-FOUR HOURS BEFORE STARTING ANY WORK UNDER THIS CONTRACT.
 - HOUSE LATERALS TO BE CONSTRUCTED WITH INVERTS AT PROPERTY LINE 4 FEET BELOW CURB GRADE EXCEPT AS NOTED.
 - WYE OR TEE BRANCHES MAY BE USED FOR CONNECTIONS TO MAINLINE SEWERS EXCEPT AS NOTED.
 - ALL STRUCTURES SHALL BE EITHER BRICK MANHOLES PER S-3 OR PRECAST CONCRETE MANHOLES PER S-3A, EXCEPT AS NOTED.
 - PROVIDE STAKES ON THE PROPERTY LINE OR PROPERTY LINES PRODUCED AT RIGHT ANGLES TO THE SEWER LINE AT THE CENTER LINE OF EACH MANHOLE.
 - MANHOLE TOPS IN UNIMPROVED RIGHTS OF WAY TO BE SIX INCHES ABOVE FINISHED GRADE.
 - VITRIFIED CLAY PIPE JOINTS SHALL BE TYPE "B", "C", OR "D" PER STANDARD SPECIFICATIONS SECTION 306-2.
 - IF A POWER POLE IS WITHIN THREE FEET OF THE SEWER, THE SEWER SHALL BE ENCASED, PER S-23, CASE 2, TWO FEET ON EACH SIDE FROM THE POINT OF INTERFERENCE.
 - IF DURING THE COURSE OF CONSTRUCTION IT IS DETERMINED THAT THERE IS LESS THAN FOUR FEET OF COVER OVER THE TOP OF A MAIN LINE OR HOUSE LATERAL V.C.P. SEWER WHICH IS NOT INDICATED ON THE PLANS, THE PIPE SHALL BE ENCASED PER S-23, CASE 2, UNLESS OTHERWISE APPROVED BY THE COUNTY ENGINEER.
 - ALL JOINTS BETWEEN CAST IRON PIPE AND VITRIFIED CLAY PIPE SHALL BE MADE WITH A RUBBER SLEEVE JOINT, TYPE "C" OR "D", (WITH BUSHING IF NECESSARY) PER STANDARD SPECIFICATIONS, SECTION 306-2.
 - SEWERS TO BE TESTED FOR LEAKAGE PER SECTION 306.1.2.2 OF THE STANDARD SPECIFICATIONS AND SPECIAL PROVISIONS.
 - RESURFACE ALL TRENCHES WITHIN PAVED AREAS TO MEET L.A. COUNTY ROAD DEPT. OR CALIFORNIA STATE HIGHWAY REQUIREMENTS IN ACCORDANCE WITH PERMITS.
- NOTE: LOTS 16, 7 & 12 ARE SEWERED FROM EXIST. 6" V.C.P. PER C.I. 754 AT STATIONS 10+54, 8+88, 7+00 & 6+62 RESPECTIVELY.

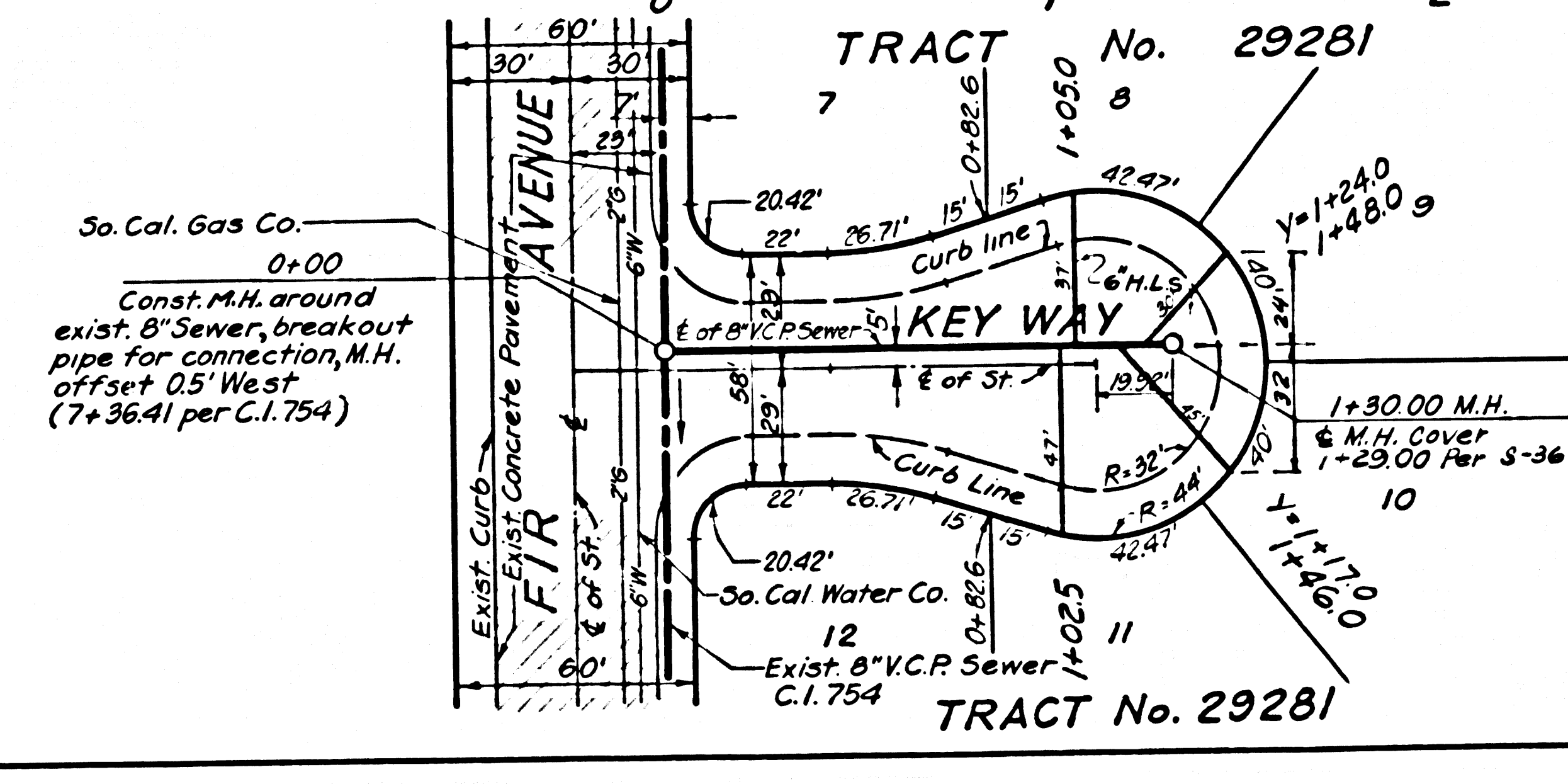
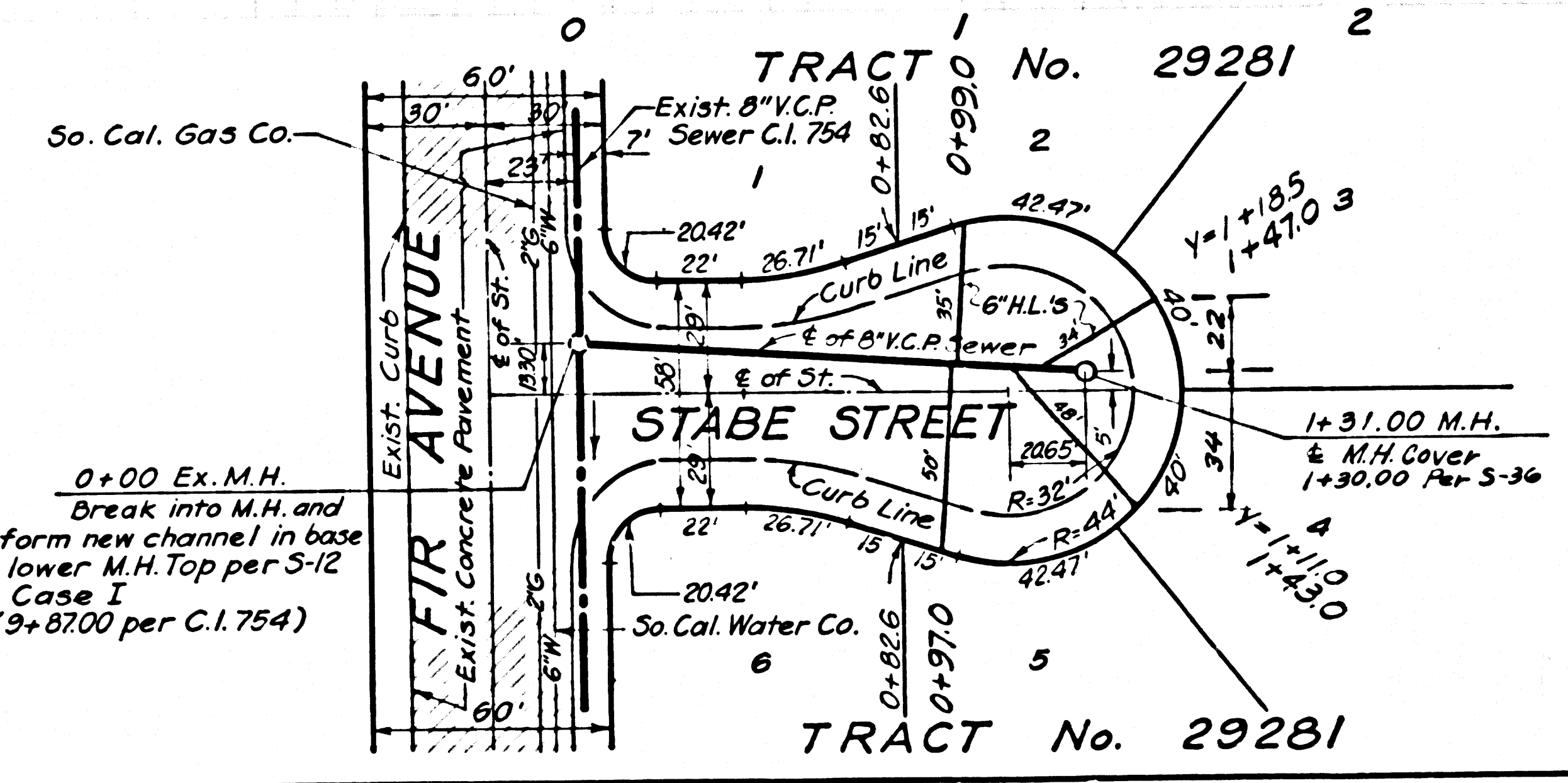
THE FOLLOWING LATEST REVISED STANDARD PLANS ON FILE IN THE OFFICE OF THE COUNTY ENGINEER SHALL APPLY IN THE CONSTRUCTION OF THIS PROJECT:

LEGEND	
MINIMUM PUBLIC SAFETY REQUIREMENTS	S-1
BRICK MANHOLE	S-2
STANDARD MANHOLE STEP	S-3
BEDDING FOR SEWER PIPE	S-4
CRADLING AND ENCASEMENT	S-5
WYE OR TEE SUPPORT	S-6
ALLOWABLE TRENCH WIDTHS	S-7
LOCKING MANHOLE FRAME AND COVER	S-8
NON-REINFORCED PRECAST CONCRETE MANHOLE	S-9
RECONSTRUCTION OF BRICK M.H. TOPS	S-10

COUNTY OF LOS ANGELES, CALIFORNIA
HARVEY T. BRANDT, COUNTY ENGINEER
JOHN D. PARKHURST, CHIEF ENGINEER
APPROVED *Robert J. Miller* 3-7-74 REGIONAL ENGINEER (DATE)
APPROVED *J. G. Gattumuso* OFFICE ENGINEER (DATE)
CHECKED *Martin L. Murphy* 3-7-74 (DATE)
REG. C. E. NO. 18,594
FIRESTONE BLDG. DIST. No. 1 J. N. 0250.02



NO CHARGE FOR CONNECTIONS



44986