

CASH CONTRACT No 8911

SANITARY SEWERS
CONSTRUCTED IN
RECONSTRUCTION OF SEWER
IN FLOWERS COURT
AND OTHER RIGHTS OF WAY

44845

1 SHEET, 2 PAGES

SCALE VERT. 1" = 8'
HORIZ. 1" = 40'

MARCH, 1973

COUNTY OF LOS ANGELES, CALIFORNIA
HARVEY T. BRANDT, COUNTY ENGINEER

APPROVED *Charles C. D.* 4/9/73
REGIONAL ENGINEER
DESIGNED *Robert J. Glick* 4/9/73
REG. C. E. NO. 14356

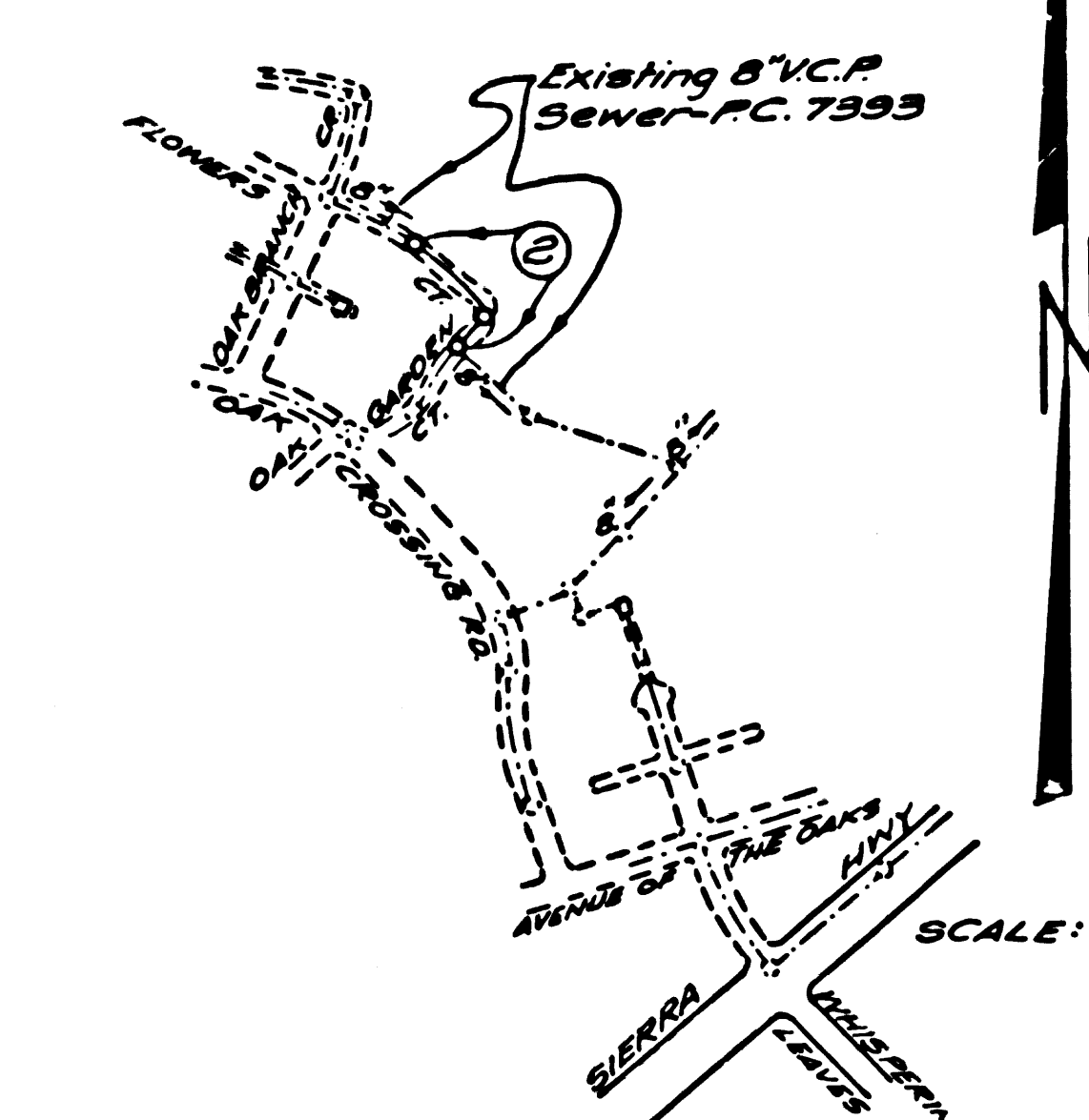
APPROVED *John D. Parkhurst*
CHIEF ENGINEER OF COUNTY
SANITATION DISTRICT NO. 12
OFFICE ENGINEER

NOTES:
WORK SHALL BE CONSTRUCTED ACCORDING TO THE STANDARD SPECIFICATIONS FOR PUBLIC WORKS CONSTRUCTION (1972 EDITION) AND COUNTY ENGINEER SPECIAL PROVISIONS FOR THE CONSTRUCTION OF SANITARY SEWERS (MARCH 1, 1974) AND SHALL BE PROTECTED ONLY IN THE PRESENCE OF THE COUNTY ENGINEER.
THE CONTRACTOR SHALL NOTIFY THE DESIGN DIVISION BY TELEPHONE (213) 978-7285 AT LEAST 24 HOURS BEFORE STARTING ANY WORK UNDER THIS CONTRACT.
GRADES TO WHICH THIS IMPROVEMENT IS TO BE CONSTRUCTED ARE SHOWN ON PLANS AND PROFILES. GRADE POINTS FOR TOP OF CURB, CENTER LINE OF STREET OR CENTER LINE OF ALLEY ARE SHOWN BY CIRCLES ON PROFILES. AT ALL POINTS BETWEEN DESIGNATED POINTS THE GRADE SHALL BE ESTABLISHED SO AS TO CONFORM TO A STRAIGHT LINE DRAWN BETWEEN SAID DESIGNATED POINTS.
ELEVATIONS ARE IN FEET ABOVE U.S.C. & G.S. SEA LEVEL DATUM OF 1929.
THIS DRAWING AND THE DATA HEREON ARE HEREBY MADE A PART OF THE SPECIFICATIONS.

LAYOUT	R. CHEZEM	MAR, 1973	CHECKED	S.W. KENNY	MAR, 1973
TRACED	R. CHEZEM	MAR, 1973	MAINTENANCE		
F. B. 3948			A B 2804	W. S. 62	
NEWHALL			BUILDING DISTRICT NO. 82		

B.M. 51.642 ELEV. 1423.098
U.S.C. & G.S. No. 330 N. 2nd St. Hght. S.P.R.R.
Cul. N. 444.15 Beneath Sierra Hwy. R.R.
Overpass Loc. 0.6 Mi. SWly. Aly. Sierra
Hwy. From Int. Salcedo Canyon Road Mtd.
12-486 1953
NEWHALL QUAD. 1958
Used Existing Inlet at Sta. 140200 as El. 1411.58
Rest of Elevations are Relative to that Per
Survey - R.B. 3948, 79-82

NOTICE TO CONTRACTOR
THE EXISTENCE AND LOCATION OF ANY UNDERGROUND UTILITY PIPES OR STRUCTURES SHOWN ON THESE PLANS ARE OBTAINED BY A SEARCH OF THE AVAILABLE RECORDS TO THE BEST OF OUR KNOWLEDGE THERE ARE NO EXISTING UTILITIES EXCEPT AS NOTED ON THIS MAP.
THE CONTRACTOR IS REQUIRED TO TAKE PRECAUTIONARY MEASURES TO PROTECT THE UTILITY LINES SHOWN AND ANY OTHER LINES NOT OF RECORD OR NOT SHOWN ON THIS DRAWING.



INDEX MAP
C.C. 8911
RECONSTRUCTION OF SEWER IN FLOWERS COURT ET AL
Note: Figure in circle indicates Page Number

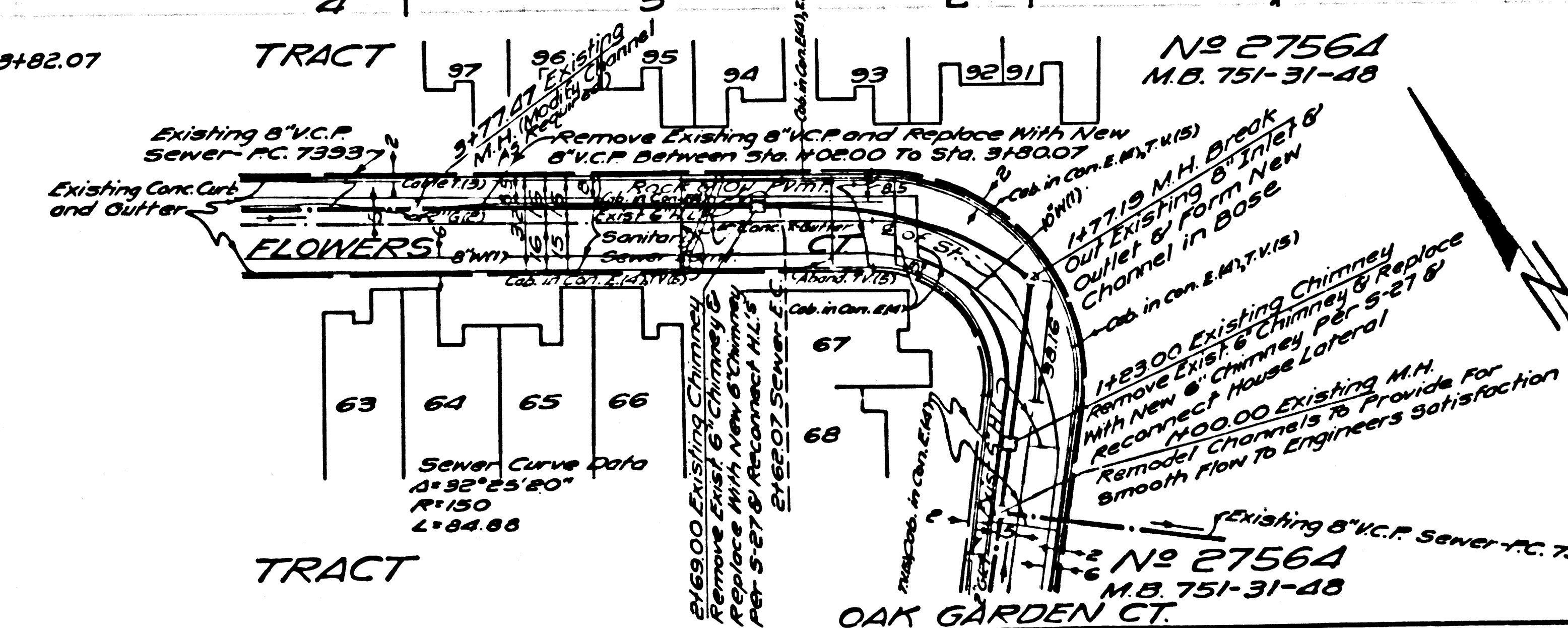
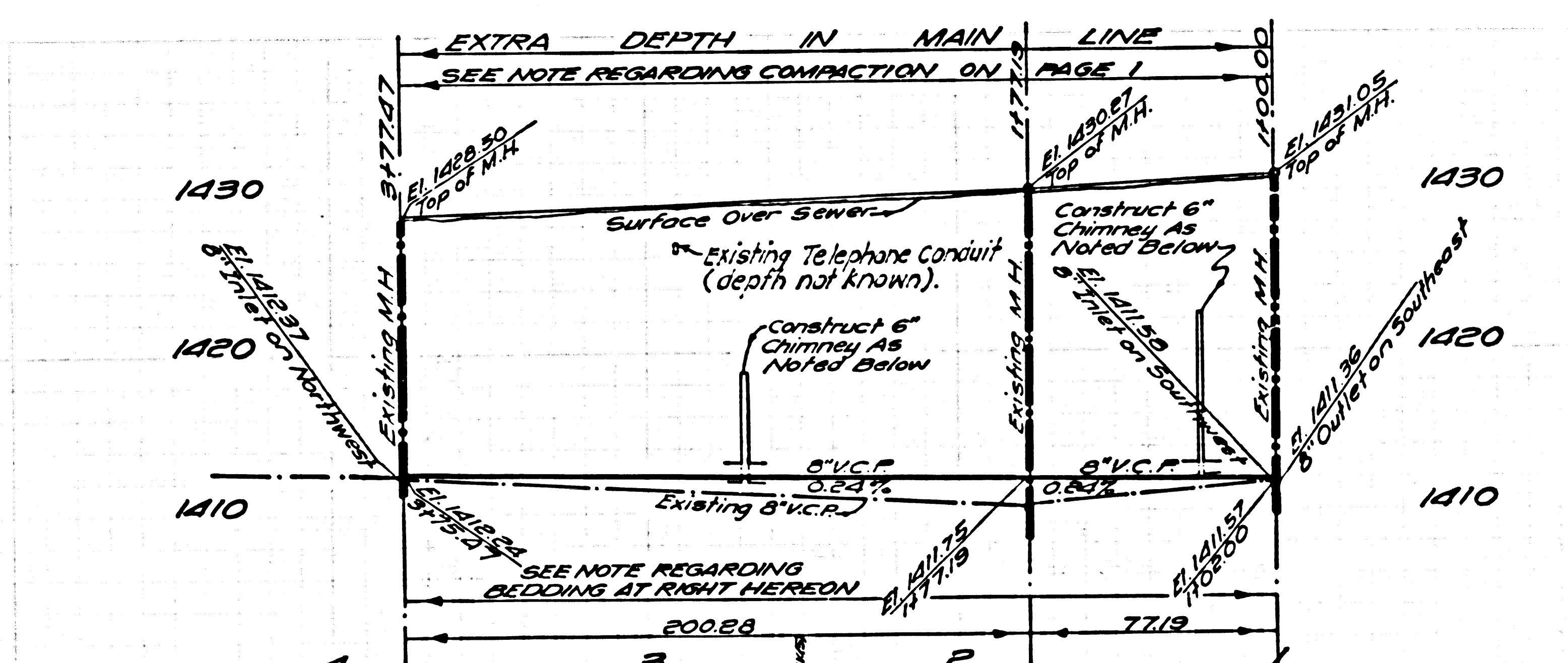
- GENERAL NOTES:
- REFER TO SECTION 7-10-41 OF STANDARD SPECIFICATIONS REGARDING SAFETY ORDERS.
 - SEE STANDARD SPECIFICATIONS FOR PRECAST CONCRETE MANHOLES AND CHIMNEYS.
 - "T" OR "Y" BRANCHES MAY BE USED FOR CONNECTIONS TO MAIN LINE SEWER, EXCEPT AS NOTED.
 - VERIFY THAT JOINTS SHALL BE TYPE "B", "C" OR "D" OF SECTION 204.2 OF STANDARD SPECIFICATIONS.
 - CONCRETE SHALL BE TYPE "A" OR "B" OF SECTION 204.2 OF STANDARD SPECIFICATIONS.
 - SEWERS TO BE TESTED FOR LEAKAGE PER SECTION 204.4 OF STANDARD SPECIFICATIONS AND SPECIAL PROVISIONS.
 - BEFORE TO PROCEED WITH CONSTRUCTION, THE CONTRACTOR SHALL SUBMIT TO AND OBTAIN APPROVAL FROM THE COUNTY ENGINEER OF A DETAILED PLAN SHOWING THE DESIGN OF SINKING, BRACING, BLOWING OR OTHER PROVISIONS FOR BURIED PROTECTION FROM HAZARD OF COLLAPSE OR DAMAGE TO EXISTING UTILITIES FROM THE SHOWING SYSTEM STANDARDS ESTABLISHED BY CONSTRUCTION SAFETY ORDERS, IT SHALL BE PREPARED BY A REGISTERED CIVIL OR STRUCTURAL ENGINEER.
 - NO REVISIONS SHALL BE MADE IN THESE PLANS WITHOUT THE APPROVAL OF THE COUNTY ENGINEER.
 - EXISTING SEWER SERVICES AND FLOW SHALL BE MAINTAINED AT ALL TIMES.
 - ALL CONCRETE CROSS CUTTERS, CURBS, OUTLETS, MANHOLE AND CHIMNEYS SHALL BE TRIMMED OR JACKED PER LOS ANGELES COUNTY ENGINEER REQUIREMENTS.
- STREET RESURFACING:
STREET RESURFACING METHODS SHALL BE IN ACCORDANCE WITH SECTION 204.1.6 OF THE SPECIAL PROVISIONS.
FINAL STREET RESURFACING IN ANY LOCATION SHALL BE COMPLETED WITHIN 10 DAYS AFTER COMPLETION OF TRENCH BACKFILL.
THE RESURFACING AREA SHALL BE SEALED WITH 2 1/2 INCHES AND 1/4 INCH CRUSHED ROCK.
RESURFACING SCHEDULE: RESURFACE TRENCH WITHIN PAVED AREA WITH TYPE II ASPHALTIC CONCRETE 3 INCHES IN THICKNESS ON 4 INCHES OF AGGREGATE BASE MATERIAL.

ALL BACKFILL AND EARTH REPLACED SHALL BE COMPACTED TO A MINIMUM OF 90% OF THE MAXIMUM DENSITY PER ASTM STANDARD METHOD OF TEST D698-57T AS MODIFIED. ACCEPTABLE CERTIFICATION OF SUCH COMPACTION SHALL BE SUBMITTED TO THE CONSTRUCTION DIVISION.

- THE FOLLOWING LATEST REVISED STANDARD PLANS ON FILE IN THE OFFICE OF COUNTY ENGINEER SHALL APPLY IN THE CONSTRUCTION OF THIS PROJECT:
- | | | | |
|-----------------------------------|---------|---|---------|
| LEGEND | SECTION | CRADING AND ENCASMENT | SECTION |
| MINIMUM PUBLIC SAFETY REQUIREMENT | 5.1 | STANDARD WYE OR TE SUPPORT | 5.24 |
| BACK MANHOLE | 5.2 | ALLOWABLE TRENCH WIDTHS | 5.33 |
| MANHOLE STEP | 5.17 | LOCKING MANHOLE FRAME AND COVER | 5.35 |
| BEDDING FOR SEWER PIPE | 5.21 | NON-REINFORCED PRECAST CONCRETE MANHOLE | 5.36 |
| SPECIAL SUPPORT AND PROTECTION | 5.22 | CHIMNEY PIPE AND CHIMNEY | 5.37 |
- THE CONTRACTOR SHALL OBTAIN THE FOLLOWING PERMITS PRIOR TO CONSTRUCTION:
- LOS ANGELES COUNTY ENGINEER, CONSTRUCTION PERMIT (SEE EXHIBIT)
 - PRIOR TO EXECUTION OF THE CONTRACT AGREEMENT BY THE COUNTY, THE CONTRACTOR SHALL OBTAIN A PERMIT TO EXCAVATE FROM THE STATE OF CALIFORNIA, DIVISION OF INDUSTRIAL SAFETY.
- THE UNDERGROUND UTILITY COMPANIES WITHIN THE LIMITS OF THIS PROJECT ARE AS FOLLOWS:
- SOLEMINT WATER CO.
 - SOUTHERN CALIFORNIA GAS CO.
 - PACIFIC TELEPHONE CO.
 - SOUTHERN CALIFORNIA EDISON CO.
 - CABLEVISION

COUNTY SANITATION DISTRICTS SHALL BE NOTIFIED 24 HOURS PRIOR TO THE FOLLOWING SO THAT REQUIRED INSPECTION CAN BE MADE.
(PHONE NO. 3925 - 638-1161)
NORTH RANGE OF THE PROJECT:
NO CONNECTION FOR THE DISPOSAL OF INDUSTRIAL WASTES SHALL BE MADE TO SEWERS SHOWN ON THESE PLANS UNTIL A PERMIT FOR INDUSTRIAL WASTE WATER DISCHARGE HAS BEEN ISSUED BY THE SANITATION DISTRICTS FOR SAID CONNECTION.

44846



NOTE:
CONTRACTOR SHALL EXCAVATE A MINIMUM OF 12 INCHES BELOW EXISTING PIPE AND BACKFILL TO NEW PIPE INVERT PER 5-21, CASE II WITH 1/2\"/>

NOTE: M.H. 3477.47 (3+82.07 PER P.C. 7393)