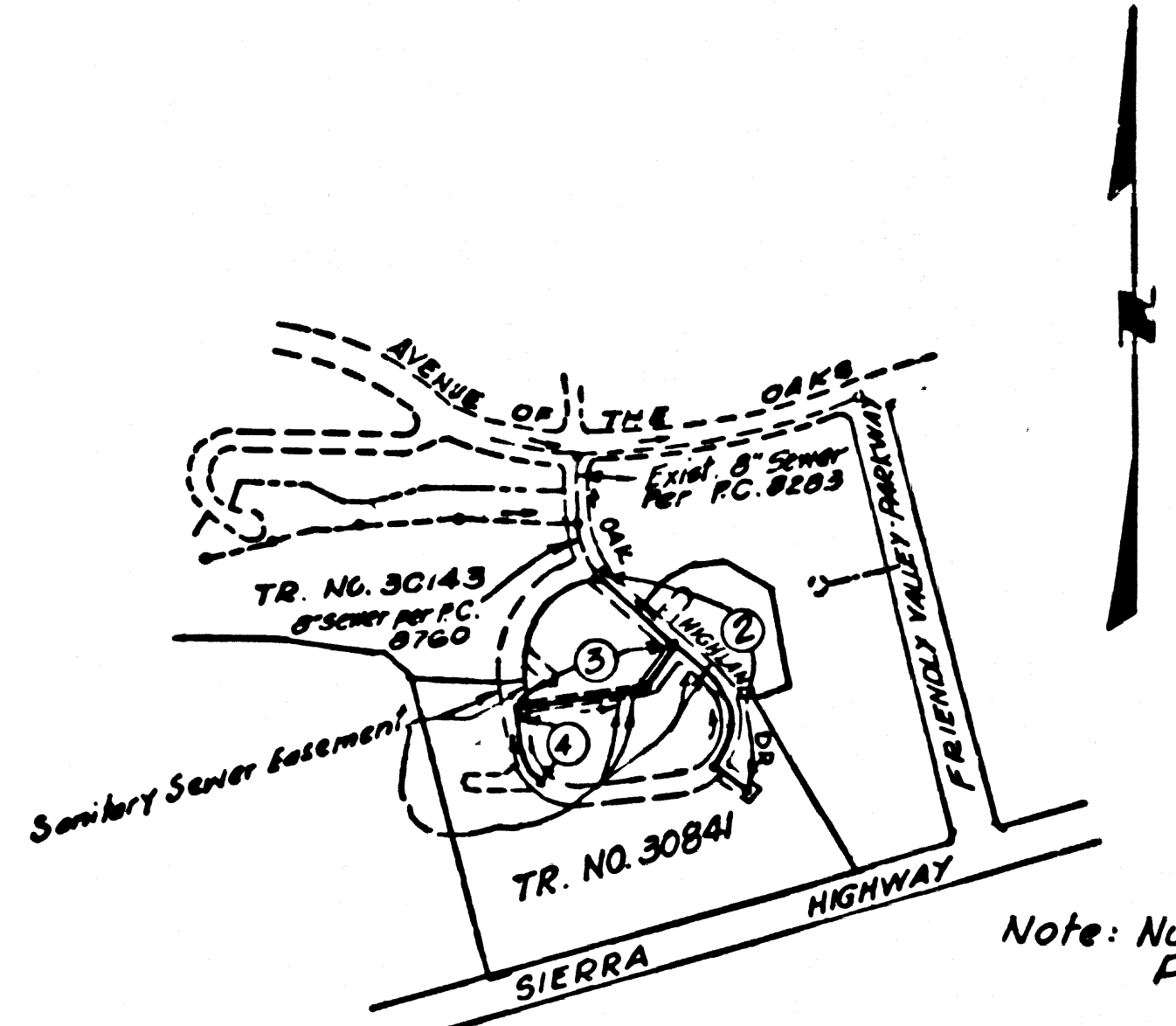


B.M. B.L. 2888 ELEV. 1330.654
 RD BM TAG SE COR SIERRA HWY +
 FRIENDLY VALLEY PKWY 2077.5'
 679 FT. E. CL. INT.
 NEWHALL QUAD. 1965

NOTES CONT'D
 15. BACKFILL ADJACENT TO PROPOSED BUILDINGS WHERE INDICATED ON PLAN TO DEPTH BELOW SURFACE AS NOTED. BACKFILL SHALL CONSIST OF JETTED SAND OR COMPACTED CRUSHED AGGREGATE PER SEC. 306-17.1 OF STANDARD SPECIFICATION.
 16. MINIMUM COVER OVER TOP OF SEWER SHALL BE 40 FEET DURING PRELIMINARY GRADING OPERATIONS.

GENERAL NOTES:
 1. ELEVATIONS ARE IN FEET ABOVE U.S.C. & G.S. SEA LEVEL DATUM OF 1929.
 2. NO REVISIONS SHALL BE MADE IN THESE PLANS WITHOUT THE APPROVAL OF THE COUNTY ENGINEER.
 3. NO REPRESENTATIVE OF THE COUNTY ENGINEER WILL SURVEY OR LAY OUT ANY PORTION OF THE WORK.
 4. GRADES TO WHICH THIS IMPROVEMENT IS TO BE CONSTRUCTED ARE SHOWN ON PLANS AND PROFILES. GRADE POINTS FOR TOP OF CURB OR CENTER LINE OF DRIVE OR CENTER LINE OF ALLEY ARE SHOWN BY CIRCLES ON PROFILES. AT ALL POINTS BETWEEN DESIGNATED POINTS THE GRADE SHALL BE ESTABLISHED SO AS TO CONFORM TO A STRAIGHT LINE DRAWN BETWEEN SAID DESIGNATED POINTS.
 5. THE PRIVATE ENGINEER SHALL FURNISH THE COUNTY ENGINEER WITH GRADE SHEETS AND STATIONING FOR ALL HOUSE LATERALS AND "T" OR "Y" BRANCHES AND SHALL PROVIDE STAKES FOR THEM AT THEIR PROPER LOCATIONS WITH STATIONING PLAINLY MARKED. ALL HOUSE LATERALS SHALL BE CONSTRUCTED IN A STRAIGHT ALIGNMENT AT RIGHT ANGLES FROM THE MAIN LINE SEWER EXCEPT AS SHOWN ON THE PLANS. HOUSE LATERALS FROM CHIMNEYS SHALL NOT HAVE AN ANGLE OF LESS THAN 45° WITH THE MAIN LINE SEWER. ANY CHANGE IN ALIGNMENT SHALL BE REQUESTED IN WRITING BY THE PRIVATE ENGINEER.
 6. THE PRIVATE ENGINEER SHALL FURNISH THE HOUSE LATERAL SEWER AT THE PROPERTY LINE BELOW THE TOP OF CURB ELEVATION FOR EACH HOUSE LATERAL ON THE GRADE SHEET.
 7. BEFORE HOUSE CAN BE STARTED, THE CONTRACTOR MUST SUBMIT TO THE COUNTY ENGINEER, ROOM 17, COUNTY ENGINEERING BUILDING, 5150 EAST IMPERIAL HWY, DOWNEY, CALIF. 90241, A SET OF PLANS AND PROFILES FOR THE HOUSE LATERALS AND MAIN LINE SEWER TO BE CONSTRUCTED UNDER HIS CONTRACT. THE COUNTY ENGINEER WILL REVIEW THE PLANS AND PROFILES AND WILL ISSUE A PERMIT TO CONSTRUCT WHEN ALL REQUIREMENTS ARE MET.
 8. APPROVAL OF THIS PLAN BY THE COUNTY OF LOS ANGELES DOES NOT CONSTITUTE A REPRESENTATION AS TO THE ACCURACY OF THE LOCATION OF OR THE EXISTENCE OR NON-EXISTENCE OF ANY UNDERGROUND UTILITY PIPE, OR STRUCTURE WITHIN THE LIMITS OF THIS PROJECT. THE NOTE APPLIES TO ALL PAGES.
 9. REFER TO SECTION 7-18.41 OF THE STANDARD SPECIFICATIONS, REGARDING SAFETY ORDERS.
 County Sanitation Districts shall be notified prior to the following so that required inspection can be made (Phone 347-1025 & 348-1181).
 No connections for the disposal of industrial wastes shall be made to sewers shown on these drawings without written permission from the Chief Engineer and General Manager of the County Sanitation Districts.

PROFILE, ALIGNMENT AND GRADE OF
SANITARY SEWERS PAGE 1
 CONSTRUCTED IN
TRACT NO. 30841
PRIVATE CONTRACT NO. 8917
 INDEX 255 S 141, 250 S 141
 W.S. 62
 2 SHEETS, 4 PAGES
 SCALE: VERT. 1" = 4'
 HORIZ. 1" = 40'
 MAY 1973
 PREPARED IN THE OFFICES OF
SIXAND ENGINEERING ASSOCIATES
 15205 Burbank Blvd. VAN NUYS, CALIF. 91404
 BY: *John L. Kern*
 REG. C. E. No. 4111



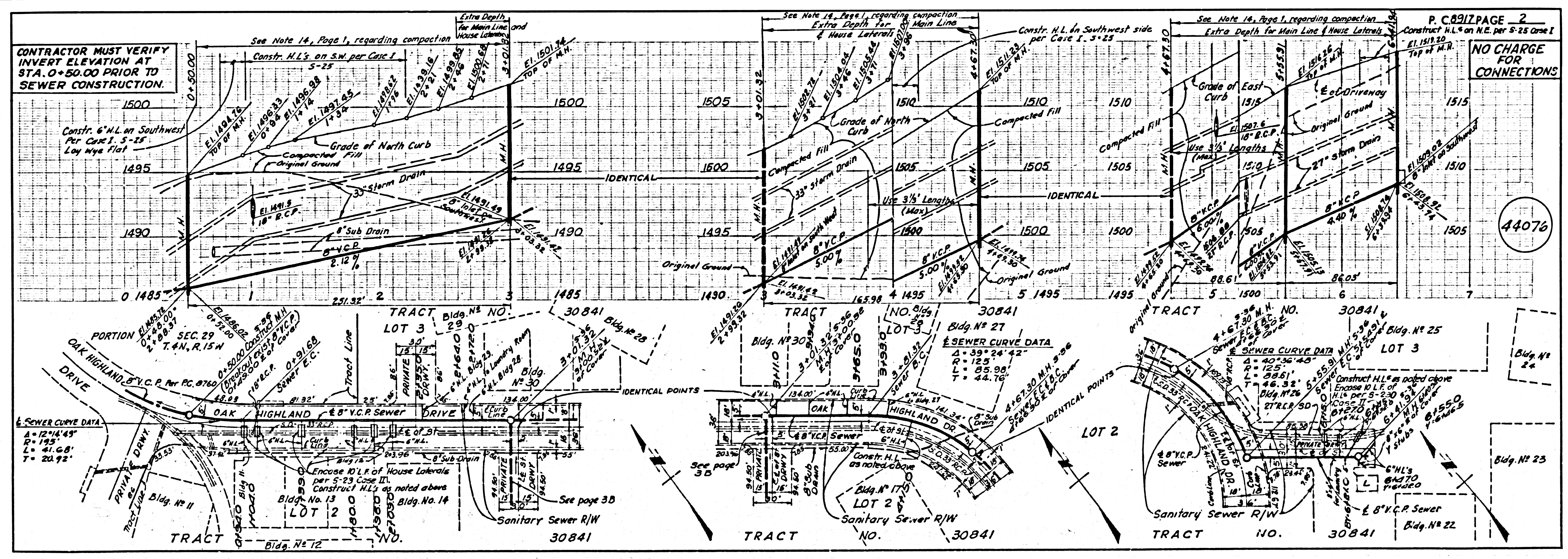
INDEX MAP
 SCALE: 1" = 500'
 P.C. NO. 8917
 TR. NO. 30841

ISSUE NO PERMITS UNTIL
 P.C. 8760 IS ACCEPTED.

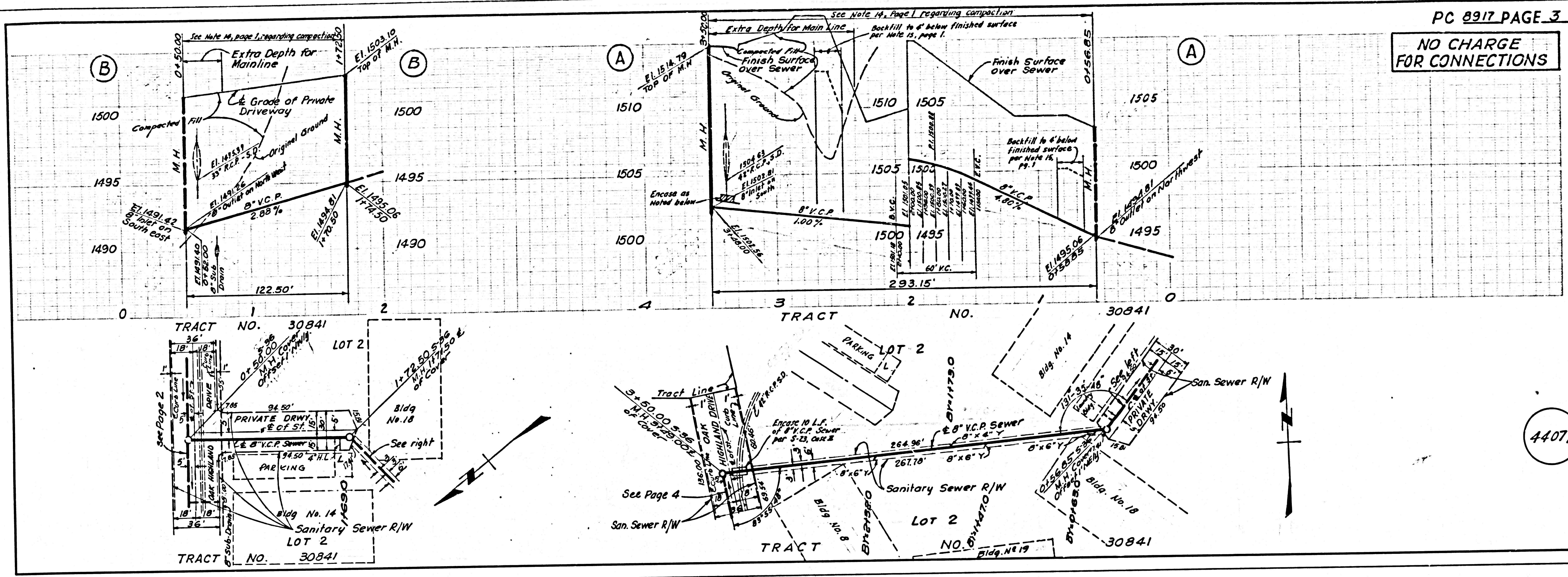
THE FOLLOWING LATEST REVISION STANDARDS PLANS ON FILE IN THE OFFICE OF THE COUNTY ENGINEER SHALL APPLY IN THE CONSTRUCTION OF THIS PROJECT.

LEGEND	51
MINIMUM PUBLIC SAFETY REQUIREMENTS	52
BRICK MANHOLE	53
STANDARD MANHOLE STEP	517
BOORDING FOR SEWER PIPE	518
CRADLING AND ENCASMENT	520
WYE OR THE BRANCH	520
ALLOWABLE TRENCH WIDTHS	520
LOCKING MANHOLE PLANS AND COVER	520
NON-REINFORCED PRECAST CONCRETE MANHOLE	520
SPECIAL HOUSE LATERALS	525

COUNTY OF LOS ANGELES, CALIFORNIA
 HARVEY T. BRANDT, COUNTY ENGINEER
 JOHN D. PARKHURST, CHIEF ENGINEER
 APPROVED *Amund C. D.* 6/11/73 APPROVED *J. D. Parkhurst*
 CHECKED *Russel J. G.* 6/11/73
 NO. C.E. NO. 14390
 1 N 0250.02

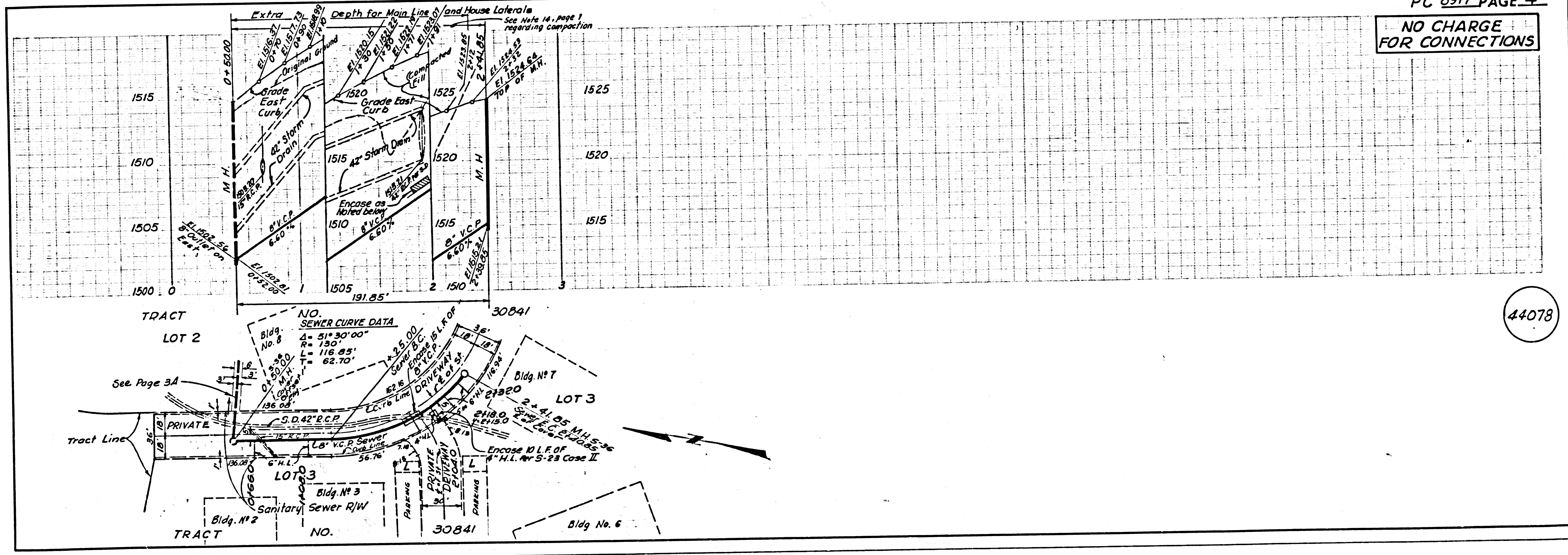


NO CHARGE FOR CONNECTIONS



44077

NO CHARGE FOR CONNECTIONS



44078