

B.M. 81.65 ELEV. 2391.642
 C.S. MON. IN N.W. COR. INT. OF
 AVENUE J AND 5TH STREET SW
 MKD. CT. 7 N. R. 12 W. 1/4 OR 14-23, E. EDGE
 LANCASTER QUAD. 19 65

LANCASTER BLDG. DIST. NO. 8

PROFILE ALIGNMENT AND GRADE OF P.C. 8921
 SANITARY SEWERS PAGE 1

TRACT NO 31341

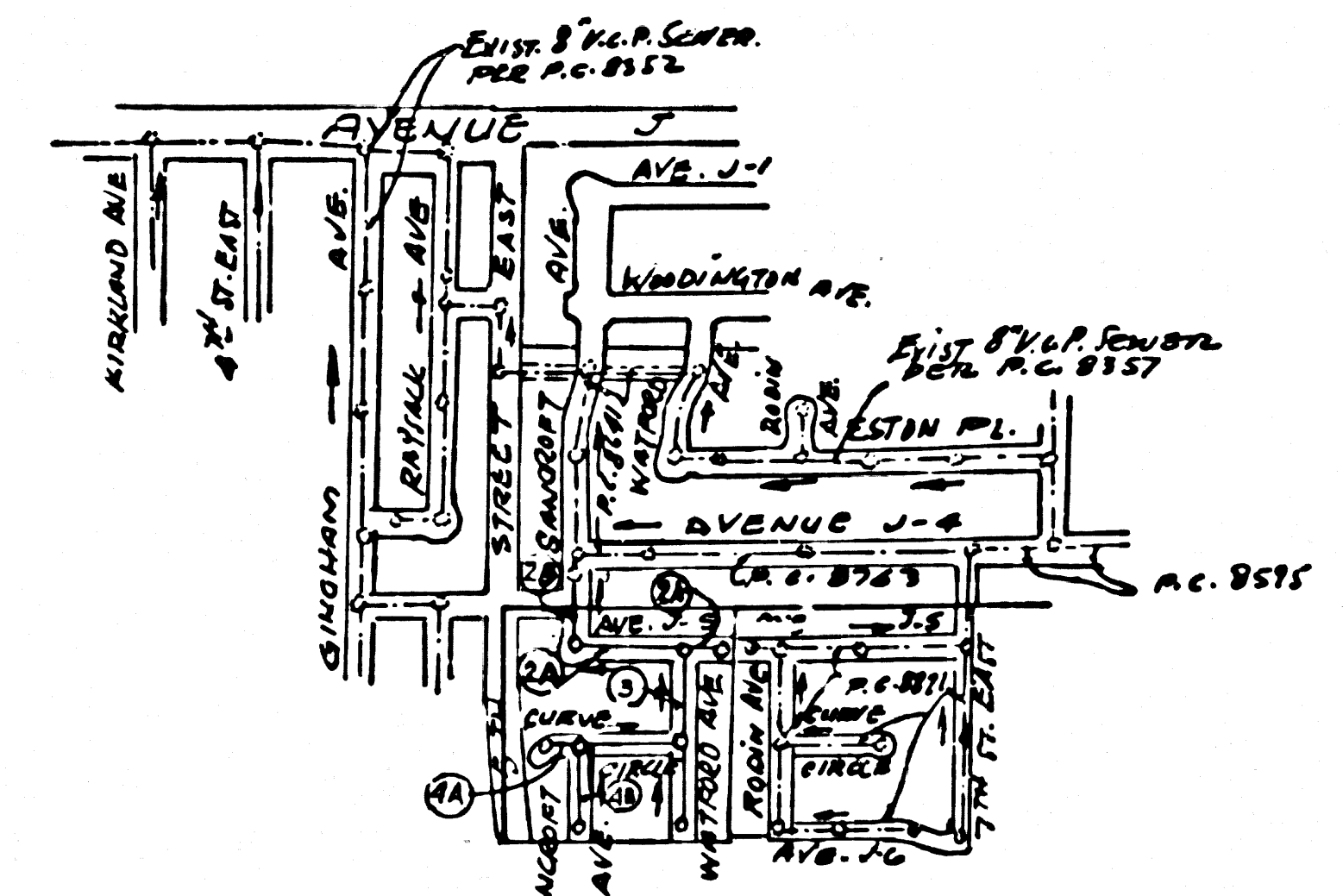
PRIVATE CONTRACT NO. 8921

W.S. 70
 2 SHEETS, 4 PAGES

SCALE: VERT. 1" = 4' HORIZ. 1" = 40'

MARCH, 1973
 PREPARED IN THE OFFICES OF
CONSOLIDATED ENGINEERING CO.
 6845 WILSON BLVD.
 SYLVAN HILLS, CALIF. 92021
 REG. C. E. NO. 12915

FOR LEGEND SEE PLAN NO. S-1



INDEX MAP
 SCALE: 1" = 600'
 P.C. NO. 8921
 TRACT NO. 31341

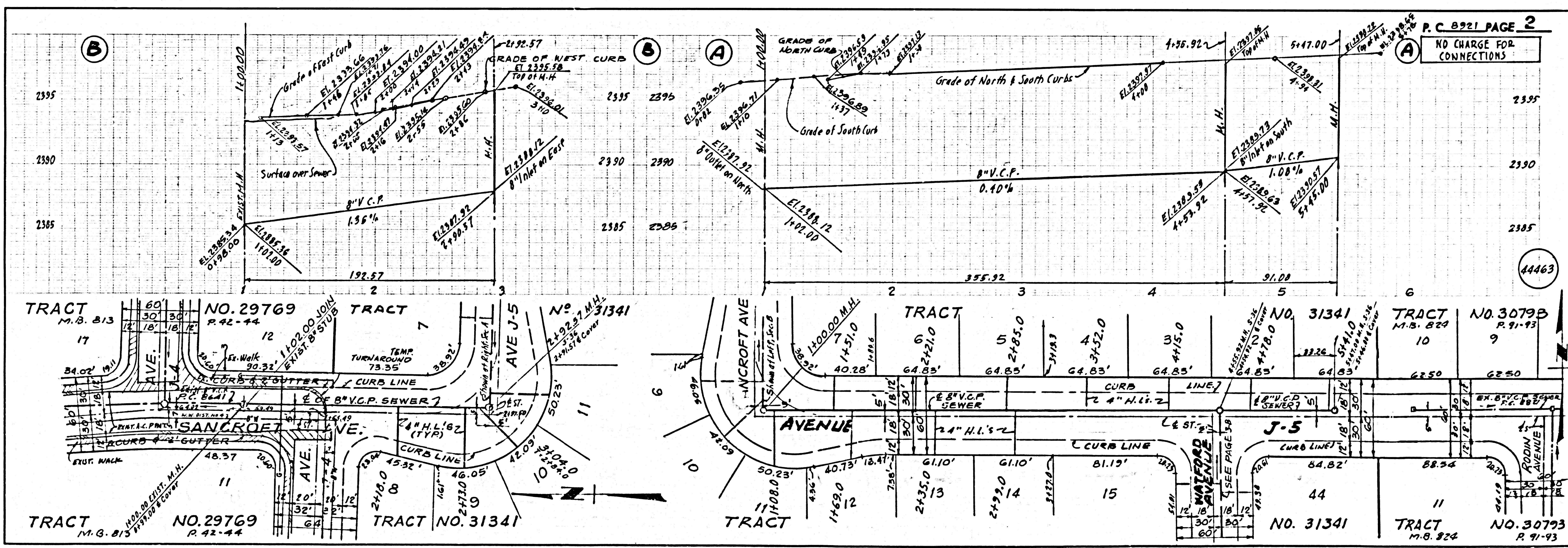
County Sanitation Districts shall be notified prior to the following so that required inspection can be made (Phone 357-1025 or 638-1161)

ACCEPTANCE OF THE PROJECT
 No connections for the disposal of industrial wastes shall be made to sewers shown on these drawings without written permission from the Chief Engineer and General Manager of the County Sanitation Districts.

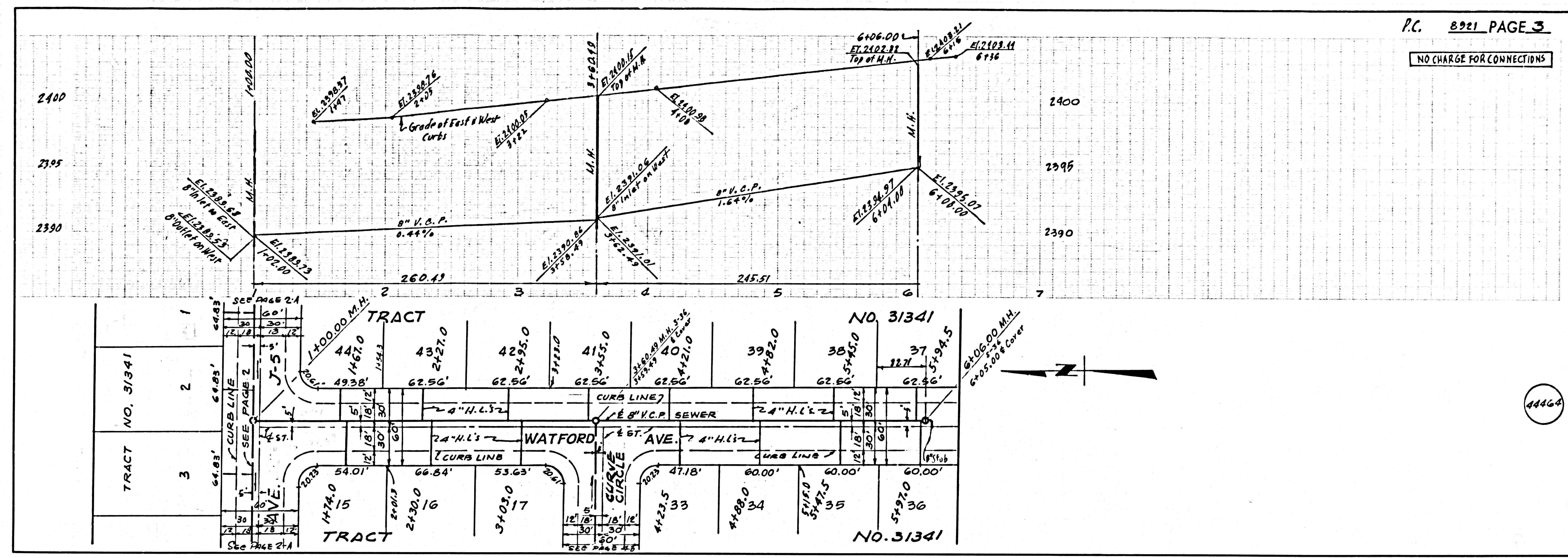
- NOTES
1. REMOVE STAKES ON THE PROPERTY LINE OR PROPERTY LINES PRODUCED AT RIGHT ANGLES TO THE SEWER LINE AT THE CENTER LINE OF EACH MANHOLE.
 2. NO REPRESENTATIVE OF THE COUNTY ENGINEER WILL SURVEY OR LAY OUT ANY PORTION OF THE WORK.
 3. THE PRIVATE ENGINEER SHALL FURNISH THE COUNTY ENGINEER WITH GRADE SHEETS AND STATIONINGS FOR ALL HOUSE LATERALS AND "T" BRANCHES AND SHALL FURNISH STAKES FOR THESE AT THEIR PROPER LOCATIONS WITH STATIONING PLAINLY MARKED. ALL HOUSE LATERALS SHALL BE CONSTRUCTED IN A STRAIGHT ALIGNMENT AT RIGHT ANGLES FROM THE MAIN LINE SEWER EXCEPT AS SHOWN ON THE PLANS. HOUSE LATERALS FROM CHIMNEYS SHALL NOT HAVE AN ANGLE OF LESS THAN 45° WITH THE MAIN LINE SEWER. ANY CHANGE IN ALIGNMENT SHALL BE INDICATED IN WRITING BY THE PRIVATE ENGINEER.
 4. THE PRIVATE ENGINEER SHALL FURNISH THE HOUSE LATERAL DEPTH AT THE PROPERTY LINE BELOW THE TOP OF CURB ELEVATION FOR EACH HOUSE LATERAL ON THE GRADE SHEET.
 5. NO REVISIONS SHALL BE MADE IN THESE PLANS WITHOUT THE APPROVAL OF THE COUNTY ENGINEER.
 6. THE CONTRACTOR SHALL NOTIFY THE CONSTRUCTION DIVISION BY TELEPHONE, (213) 974-7283, AT LEAST TWENTY-FOUR HOURS BEFORE STARTING ANY WORK UNDER THE CONTRACT.
 7. ALL STRUCTURES UNLESS OTHERWISE SPECIFIED SHALL BE CONSTRUCTED PER S-3 OR PRECAST CONCRETE MANHOLES PER S-36.
 8. "T" OR "Y" BRANCHES MAY BE USED FOR CONNECTIONS TO MAIN LINE SEWER, EXCEPT AS NOTED.
 9. MANHOLE TOPS IN UNIMPROVED RIGHTS-OF-WAY TO BE SIX INCHES ABOVE FINISHED GRADE.
 10. VITRIFIED CLAY PIPE LINTS SHALL BE TYPE "D", 18" OR 24" AS PER SPECIFICATIONS, SECTION 208-2.
 11. USE MECHANICAL COMPRESSION JOINTS FOR ALL V.C.P. JOINTS PER SPEC., SECS. 24, 26 & 27.
 12. IF A POWER POLE IS WITHIN THREE FEET OF THE SEWER, THE SEWER SHALL BE ENCASED, PER S-25, TWO FEET ON EACH SIDE FROM THE POINT OF INTERFERENCE.
 13. IF DURING THE COURSE OF CONSTRUCTION IT IS DETERMINED THAT THERE IS LESS THAN FOUR FEET OF COVER OVER THE TOP OF MAIN LINE OR HOUSE LATERAL V.C.P. SEWER WHICH IS NOT INDICATED ON THE PLANS, THE PIPE SHALL BE ENCASED PER S-25, UNLESS OTHERWISE APPROVED BY THE COUNTY ENGINEER.
 14. HOUSE LATERALS TO BE CONSTRUCTED WITH INVERTS AT PROPERTY LINE & FEET BELOW CURB GRADE.
 15. RESURFACE ALL TRENCHES WITHIN PAVED AREAS TO MEET L.A. COUNTY ROAD DEPT. OR CALIFORNIA STATE HIGHWAY REQUIREMENTS IN ACCORDANCE WITH PERMITS.
 16. SEWERS TO BE TESTED FOR LEAKAGE PER SEC. 206.2.1.2.7. OF THE STANDARD SPECIFICATIONS AND SPECIAL PROVISIONS.
 17. ALL STATE AND LOCAL PERMITS AND ORDERS WILL BE STRICTLY ENFORCED AND SHALL COMPLY WITH SPECIFICATIONS SECTION 7-10.4.1.
 18. FULL COMPLIANCE WITH SEC. 206-1.9.3. OF THE SPECIAL PROVISIONS WILL BE REQUIRED FOR ALL STREETS, DRIVEWAYS AND SIDEWALKS. CONNECTIONS AND ROAD EQUIVALENTS BY THE REQUIRED TESTING AND REPORTING SHALL BE PROVIDED BY THE CONTRACTOR PRIOR TO THE ISSUANCE OF A CERTIFICATE OF PARTIAL ACCEPTANCE.
- THE FOLLOWING COUNTY ENGINEER STD. PLANS APPLY TO THIS PROJECT:
- | | |
|--|------|
| LEGEND | 3-1 |
| MINIMUM EXCAVATION SAFETY REQUIREMENTS | 3-2 |
| BRICK MANHOLES | 3-3 |
| PRECAST CONCRETE MANHOLES | 3-36 |
| LANDING DEPTH AND STRENGTH | 3-37 |
| STANDARD MANHOLE TESTS | 3-38 |
| BODDING FOR HOUSE LATERALS | 3-23 |
| GROUND AND ELEVATION | 3-26 |
| WYE ORTEE SUBSTITUTION | 3-27 |
| A MANHOLE TRENCH WIDTHS | 3-28 |

NOTICE TO CONTRACTOR
 The existence and location of any underground utility lines or structures shown on these plans are obtained by a search of the available records to the best of my knowledge there are no existing utilities except as shown on these plans. The contractor is required to take due precautionary measures to protect the utility lines shown and any other lines not of record or not shown on these plans.
Sanjiv Reddy
 2-2-73

NOTES
 GRADES TO WHICH THIS IMPROVEMENT IS TO BE CONSTRUCTED ARE SHOWN ON PLANS AND PROFILE. GRADE POINTS FOR TOP OF CURBS, CENTER LINE OF STREETS, OR CENTERLINE OF ALLEYS ARE SHOWN BY CIRCLES ON PROFILES. AT ALL POINTS BETWEEN DESIGNATED POINTS THE GRADE SHALL BE ESTABLISHED SO AS TO CONFORM TO A STRAIGHT LINE DRAWN BETWEEN SAID DESIGNATED POINTS. ELEVATIONS ARE IN FEET ABOVE U.S.C. & G.S. MEAN DATUM OF 1929.
 HOUSE LATERALS SHALL BE CONSTRUCTED ACCORDING TO THE STANDARD SPECIFICATIONS FOR ALL L.A. COUNTY SANITARY SEWERS AND HOUSE LATERALS PER S-3 AND S-36. ALL HOUSE LATERALS SHALL BE CONSTRUCTED IN A STRAIGHT ALIGNMENT AT RIGHT ANGLES FROM THE MAIN LINE SEWER EXCEPT AS SHOWN ON THE PLANS. HOUSE LATERALS FROM CHIMNEYS SHALL NOT HAVE AN ANGLE OF LESS THAN 45° WITH THE MAIN LINE SEWER. ANY CHANGE IN ALIGNMENT SHALL BE INDICATED IN WRITING BY THE PRIVATE ENGINEER.
 APPROVAL OF THIS PLAN BY THE COUNTY OF LOS ANGELES DOES NOT CONSTITUTE A REPRESENTATION AS TO THE ACCURACY OF THE LOCATION OR OF THE EXISTENCE OR NON-EXISTENCE OF ANY UNDERGROUND UTILITY PIPE, OR STRUCTURE WITHIN THE LIMITS OF THIS PROJECT. THE NOTE APPLIES TO ALL PAGES.
 IF WORK IS TO BE DONE IN A STATE HIGHWAY, A PERMIT MUST BE OBTAINED FROM THE STATE OF CALIFORNIA, DIVISION OF HIGHWAYS, 120 SOUTH SPRING STREET, LOS ANGELES, CALIFORNIA.
 THESE DRAWINGS AND THE DATA HEREON AND HERETO MADE A PART OF THE PROJECT.
 COUNTY OF LOS ANGELES, CALIFORNIA
 HARVEY T. BRANKE COUNTY ENGINEER J. D. PARKHURST, CHIEF ENGINEER
 CO. SEAL NO. 12
 APPROVED BY *J. D. Parkhurst* CHIEF ENGINEER
 APPROVED BY *Sanjiv Reddy* 1/14/73
 CHECKED BY *R. L. Kopyev* 1/14/73
 W.C. NO. 16782
 44462
 J.N. 0250.02

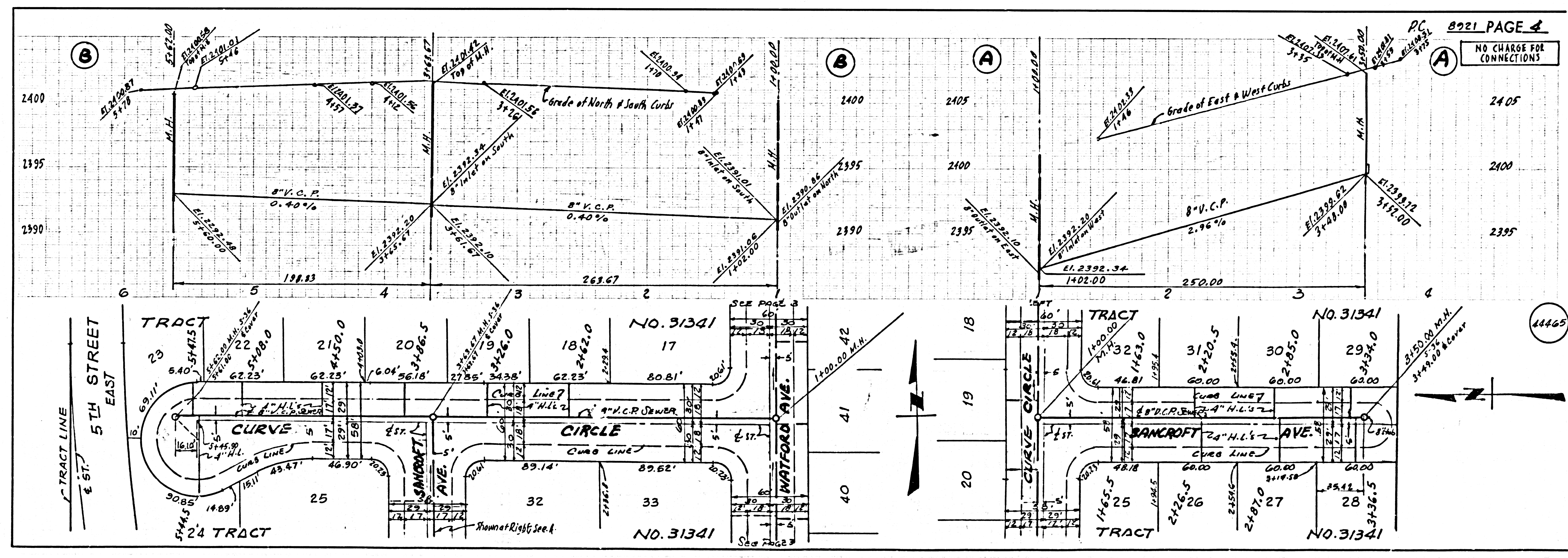


NO CHARGE FOR CONNECTIONS



44464

NO CHARGE FOR CONNECTIONS



44465