

REVIEWED *Donnell F. Leary* 4-26-73
 DESIGN SECTION 8 DATE

ROSEMEAD BUILDING DISTRICT NO. 5.07

Ref. C. 8922 J.N. 077962

GENERAL SEWER NOTES

NOTICE TO CONTRACTOR

1. WORK SHALL BE CONSTRUCTED ACCORDING TO THE STD. SPECIFICATIONS FOR PUBLIC WORKS CONSTRUCTION (1970 EDITION WITH 1971 AND 1972 SUPPLEMENTS) AND THE COUNTY ENGINEER SPECIAL PROVISIONS FOR THE CONSTRUCTION OF SANITARY SEWERS DATED APRIL 16, 1972 AND SHALL BE INSPECTED ONLY IN THE PRESENCE OF THE COUNTY ENGINEER.
2. ALL PIPE IS STANDARD DEPTH EXTRA STRENGTH VITRIFIED CLAY PIPE, EXCEPT AS NOTED.
3. NO REVISIONS SHALL BE MADE TO THESE PLANS WITHOUT THE APPROVAL OF THE COUNTY ENGINEER.
4. THE CONTRACTOR SHALL NOTIFY THE CONSTRUCTION DIVISION BY TELEPHONE (213) 679-4171, EXT. 8181, AT LEAST 24 HOURS BEFORE STARTING ANY WORK UNDER THIS CONTRACT.
5. ALL MANHOLES SHALL BE EITHER RCP OR PRECAST CONCRETE PER S-36, EXCEPT AS NOTED.
6. VITRIFIED CLAY PIPE JOINTS SHALL BE TYPE "D", "E" OR "G" PER SECTION 504-2 OF STANDARD SPECIFICATIONS FOR ALL VITRIFIED CLAY PIPE JOINTS.
7. REFER TO SECTION 5-10.41 OF STANDARD SPECIFICATIONS REGARDING SAFETY MARKERS.
8. SEWERS TO BE TESTED FOR LEAKAGE PER SECTION 506-2.2.2 OF STANDARD SPECIFICATIONS AND SPECIAL PROVISIONS.
9. 7" OF 4" BRANCHED MAY BE USED FOR CONNECTION TO MAIN LINE SEWERS, EXCEPT AS NOTED.
10. ALL SEWER PIPES AND APPURTENANCES SHALL BE ABANDONED OR REMOVED IN ACCORDANCE WITH SEC. 506-3 OF THE STANDARD SPECIFICATIONS.
11. FOR LEGEND SEE STANDARD PLAN S-1.
12. CONTRACTOR SHALL MAINTAIN SEWER SERVICE AT ALL TIMES DURING CONSTRUCTION OF MAIN LINE SEWER AND HOUSE LATERALS.
13. PRIOR TO TRENCH EXCAVATION THE CONTRACTOR SHALL SUBMIT TO AND OBTAIN APPROVAL FROM THE COUNTY ENGINEER OF A DETAILED PLAN SHOWING THE DESIGN OF SHIELDING, BRACING, SLOPING OR WINDING PROVISIONS FOR PROPER PROTECTION FROM THE HAZARD OF CAVING GROUND. IF SUCH PLAN VARIES FROM THE SHIELDING SYSTEM STANDARDS ESTABLISHED BY THE CONSTRUCTION SAFETY BOARD, IT SHALL BE PREPARED BY A REGISTERED CIVIL OR STRUCTURAL ENGR.
14. IF A POWER POLE IS WITHIN THREE FEET OF THE SEWER THE SEWER SHALL BE ENCASED PER S-28, TWO FEET ON EACH SIDE FROM THE POINT OF INTERFERENCE.
15. ALL CONCRETE CROSS BUTTERS, CURBS, CUTTERS, DRAINAGE AND DRAINAGE SHALL BE TOLERED OR JACKED PER LOS ANGELES COUNTY ROAD DEPARTMENT REQUIREMENTS.
16. USE LOCKING MANHOLE FRAMES AND COVERS PER S-35, EXCEPT AS NOTED.

THE EXISTENCE AND LOCATION OF ANY UNDERGROUND UTILITY PIPES OR STRUCTURES SHOWN ON THESE PLANS ARE OBTAINED BY A SEARCH OF THE AVAILABLE RECORDS TO THE BEST OF OUR KNOWLEDGE THERE ARE NO EXISTING UTILITIES EXCEPT AS NOTED ON THIS PLAN.

THE CONTRACTOR IS REQUIRED TO TAKE PRE CAUTIONARY MEASURES TO PROTECT THE UTILITY LINES SHOWN AND ANY OTHER LINES NOT OF RECORD OR NOT SHOWN ON THIS PLAN. THE CONTRACTOR SHALL CONTACT ALL UTILITY COMPANIES FOR UTILITY MARKING AND COORDINATION PRIOR TO CONSTRUCTION.

THE FOLLOWING LATEST REVISED STANDARD PLANS ON FILE IN THE OFFICE OF COUNTY ENGINEER SHALL APPLY IN THE CONSTRUCTION OF THIS SEWER PROJECT:

LEGEND

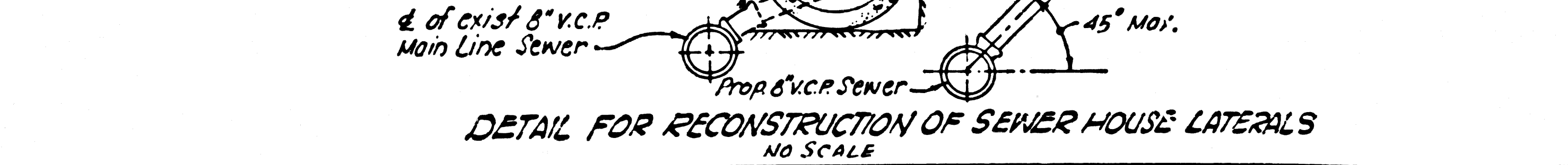
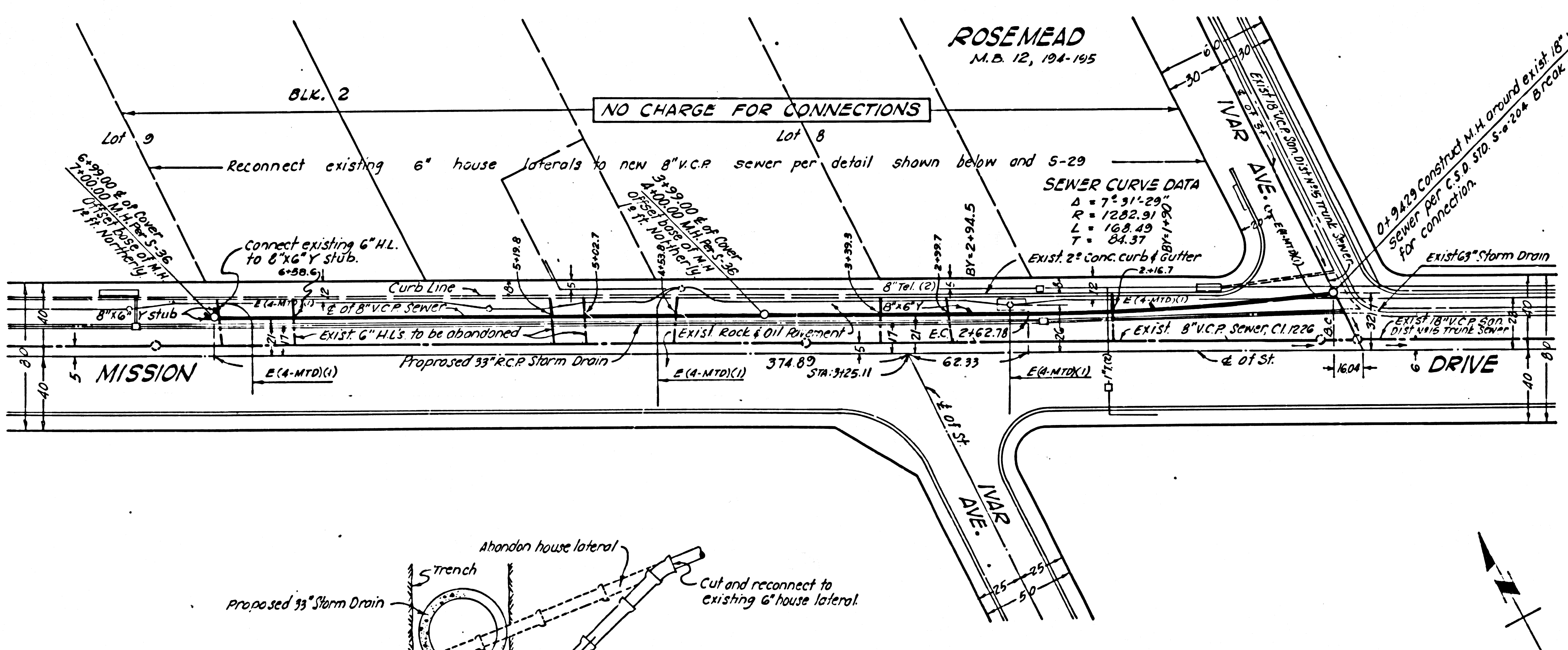
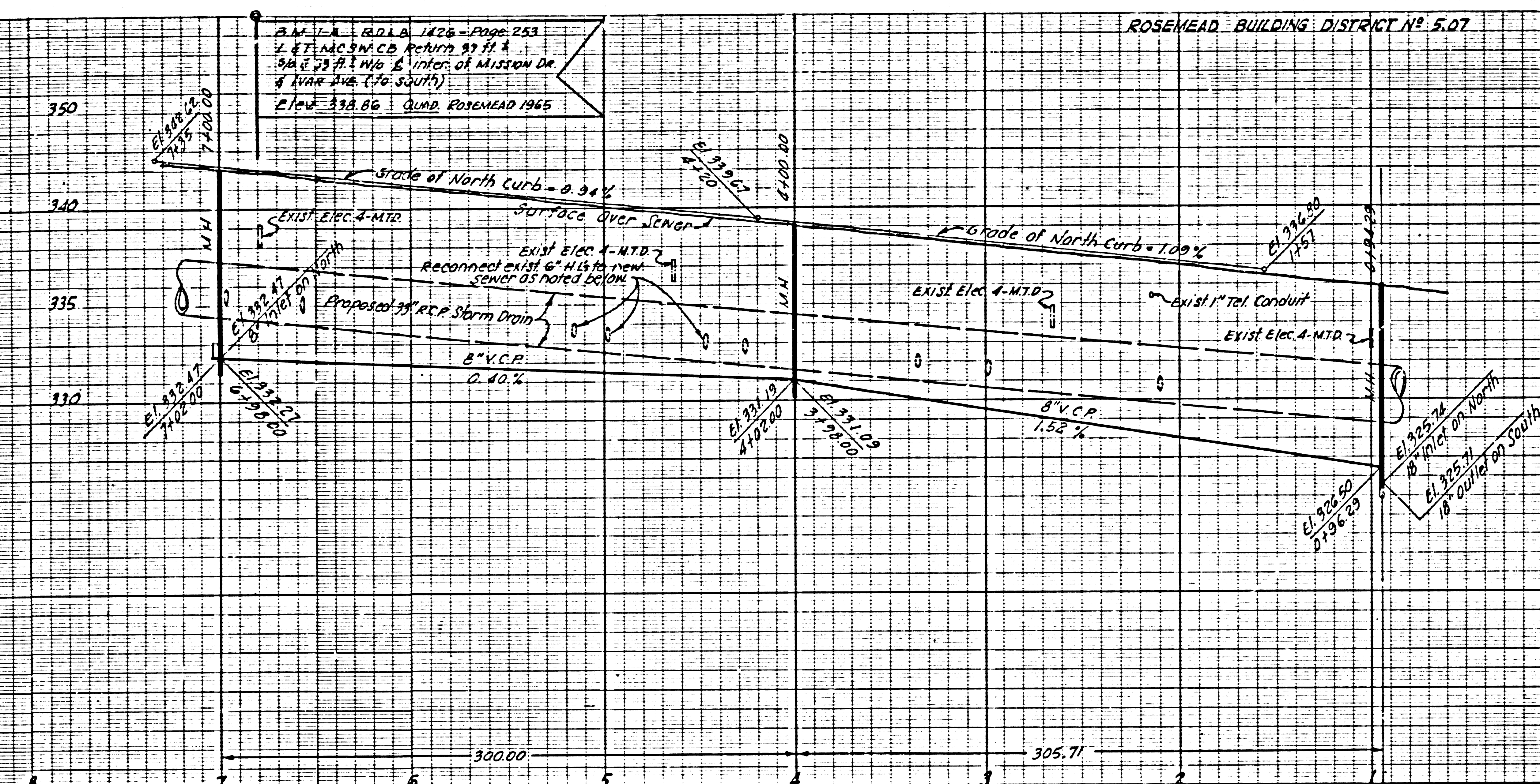
MIN. PUBLIC SAFETY REQUIREMENTS	S-1
BRICK MANHOLE	S-2
MANHOLE STEP	S-3
BEDDING FOR SEWER PIPE	S-7
STANDARD WYE OR TEE SUPPORT	S-21
STANDARD WYE OR TEE SUPPORT	S-25
ALLOWABLE TRENCH WIDTH	S-33
NON REINFORCED PRECAST CONCRETE MANHOLE	S-36
RECONSTRUCTION OF SANITARY SEWER ABOVE LATERALS	S-28
LOCKING MANHOLE FRAMES AND COVERS	S-35

STREET RESURFACING

STREET RESURFACING METHODS SHALL BE IN ACCORDANCE WITH SECTION 5-10.41 OF STANDARD SPECIFICATIONS. THE RESURFACING TRENCH WITHIN PAVED AREA, IN MISSION DRIVE FROM STA. 0+83 TO STA. 2+40, WITH PREMIUM DRUG AND 6" INCHES IN THICKNESS (TYPE-1) IN 5 INCHES OF AGGREGATE BASE MATERIALS.

THE UNDERGROUND UTILITY COMPANIES WITHIN THE LIMITS OF THIS PROJECT ARE AS FOLLOWS:

1. SOUTHERN CALIF. EDISON CO.
2. PACIFIC TEL. AND TEL. CO.



Company Standard Practices shall be used in place of the following as long as they are not less than the minimum standards shown on these plans.

Components of construction of manholes shall be in accordance with the following:

No connections for the disposal of industrial wastes shall be made unless approved by the County Engineer.

Chimney stacks shall be installed in accordance with the standards of the County Public Health Department.

PROFILE, GRADE AND ALIGNMENT OF SANITARY SEWERS TO BE CONSTRUCTED IN MISSION DRIVE

CASH CONTRACT NO. 4123

COUNTY OF LOS ANGELES
 W.S. 44
 HARVEY T. BRANDT COUNTY ENGINEER

DESIGNED BY: *Donnell F. Leary* Reg. C.E. No. 10570
 DATE: 4-25-73

APPROVED BY: *John D. Parkhurst* COUNTY SANITATION DISTRICT NO. 5
 DATE: 4-26-73
 OFFICE ENGINEER

REFERENCES
 CHECKER
 DESIGNER
 PROJECT ENGINEER

PLAN S	
LOS ANGELES COUNTY ROAD DEPARTMENT	
HIGHWAY DIVISION	JOB NAME MISSION DRIVE
LIMITS RUBIO WASH TO IVAR AVE.	
DATE BY	JOB NO. 4123
REVISIONS	SCALE HORIZ. 1" = 20'
	SCALE VERT. 1" = 4'
	DWG. NO.
	SHEET 1 OF 1 SHTS.