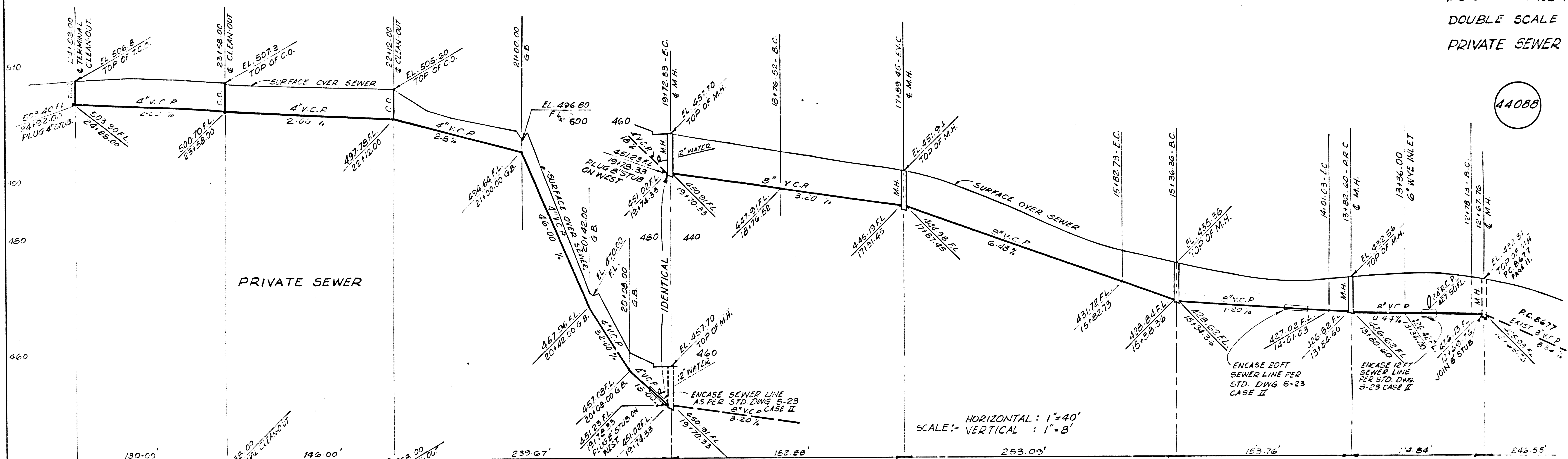


44088



HORIZONTAL: 1"=40'  
 SCALE: VERTICAL: 1"=8'

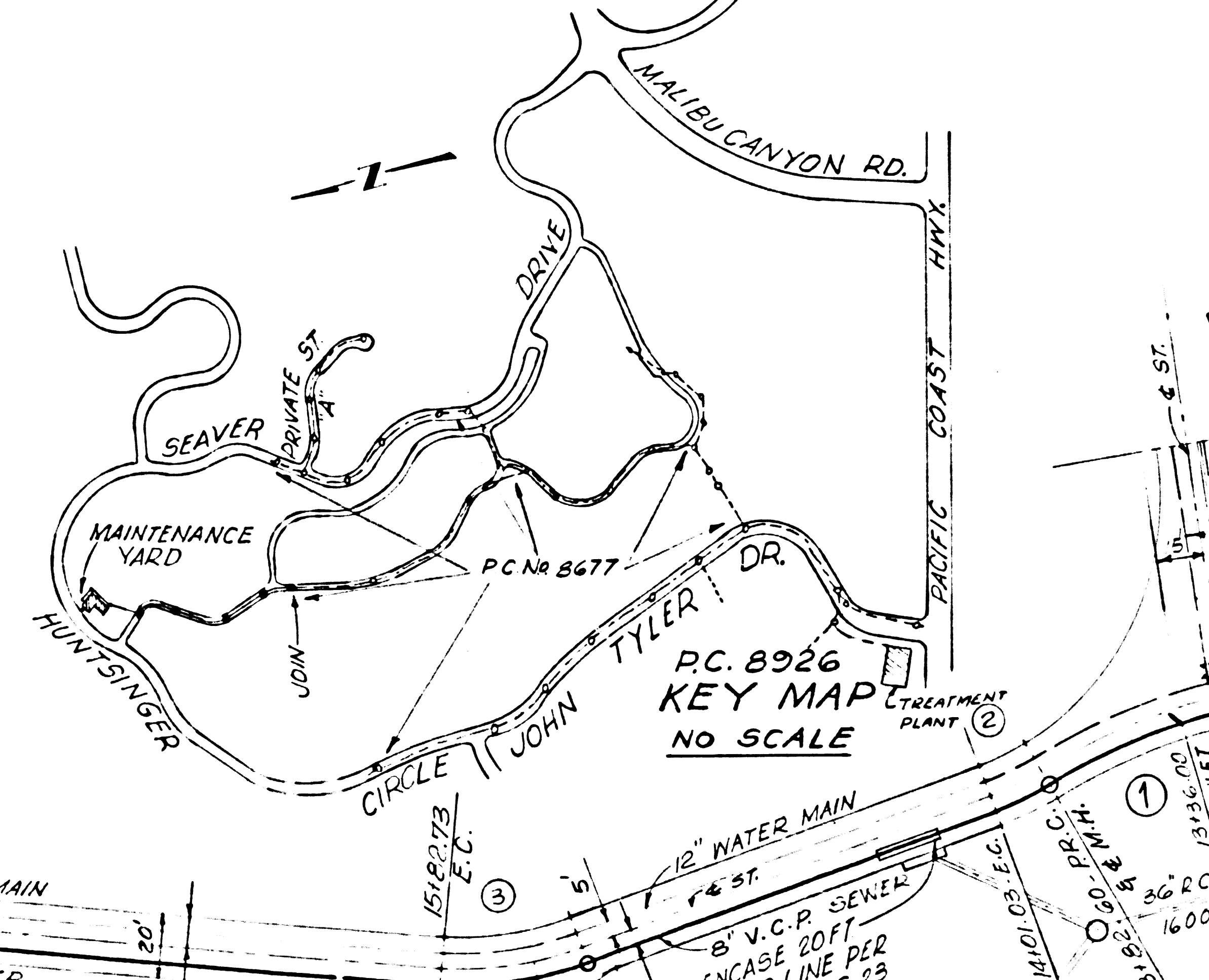
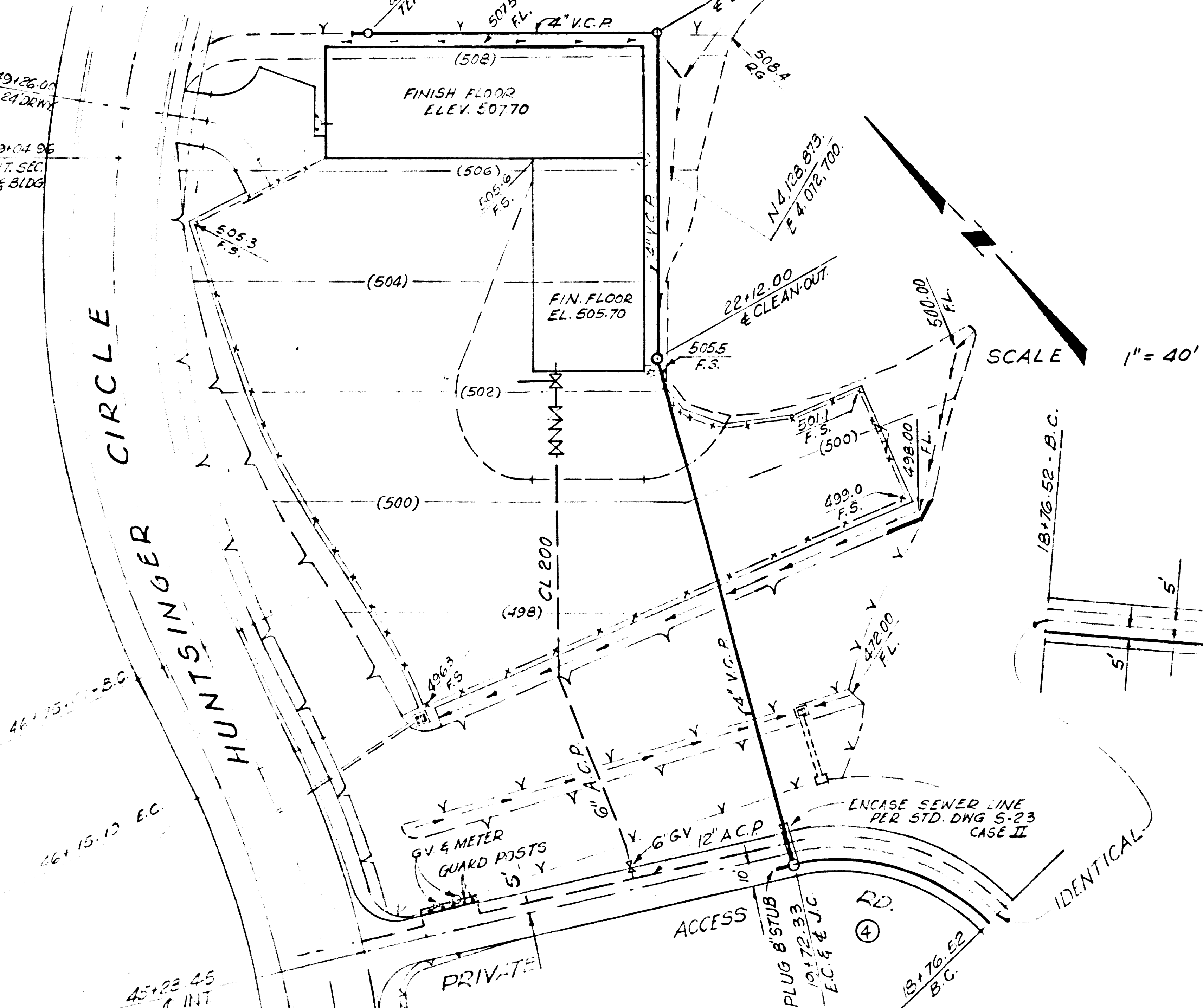
SEWER CURVE DATA

| NO | CHORD     | R    | L       | T      |
|----|-----------|------|---------|--------|
| 1  | 30'4"41"  | 195' | 104'17" | 53.52' |
| 2  | 10'03"22" | 105' | 18'43"  | 9.24'  |
| 3  | 25'18"03" | 105' | 40'37"  | 23.57' |
| 4  | 67'47"11" | 95'  | 35.81'  | 52.43' |

NOTES:-

THE FOLLOWING LATEST REVISED STANDARD PLANS ON FILE IN THE OFFICE OF THE COUNTY ENGINEER SHALL APPLY IN THE CONSTRUCTION OF THIS PROJECT:-

- LEGEND
- 5-1 MIN. PUBLIC SAFETY REQUIREMENTS
  - 5-17 STD. MANHOLE STEP BEDDING FOR SEWER PIPE
  - 5-21 ANCHOR BLOCK
  - 5-23 GRADING & ENCASEMENT
  - 5-26 WYE OR TEE SURMOUNT ALLOWABLE TRENCH WIDTH
  - 5-33 LOCKING M.H. FRAME & COVER
  - 5-35 NON-REINFORCED PRECAST CONCRETE MANHOLE
  - 5-36 CONCRETE MANHOLE
  - 5-37 USE SHORT LENGTH PIPES WHILE RADIUS IS LESS THAN 150 FT. AS IN (3), (4) & (5)



PRIVATE CONTRACT NO. 8926  
 COUNTY OF LOS ANGELES, CALIFORNIA  
 HARVEY T. BRANDT, COUNTY ENGINEER

APPROVED: *[Signature]* 5/1/73 (DATE)  
 REGIONAL ENGINEER

CHECKED: *[Signature]* 4/30/73 (DATE)  
 REG. C. E. NO. 17222

MALIBU BLDG. DIST. 9.2 J.N. 037199

PRIVATE CONTRACT NO. 8926

|  |  |   |   |
|--|--|---|---|
| REVISED GRADES FROM STA 24+00 TO 24+85   |  | PEPPERDINE UNIVERSITY<br>MALIBU CAMPUS<br>SEWER PLAN & PROFILE<br>PRIVATE ACCESS ROAD |   |
| REVISED GRADES FROM 13182.00 TO 13182.45 |  | DESIGN: M.B.<br>DRAWN BY: M.B.<br>DATE: JANUARY 73<br>SCALE: AS SHOWN                 | BY: <i>[Signature]</i><br>L.S. NO. 1<br>SHEET NO. 1<br>OF 1 SHEETS NO. 1619 |