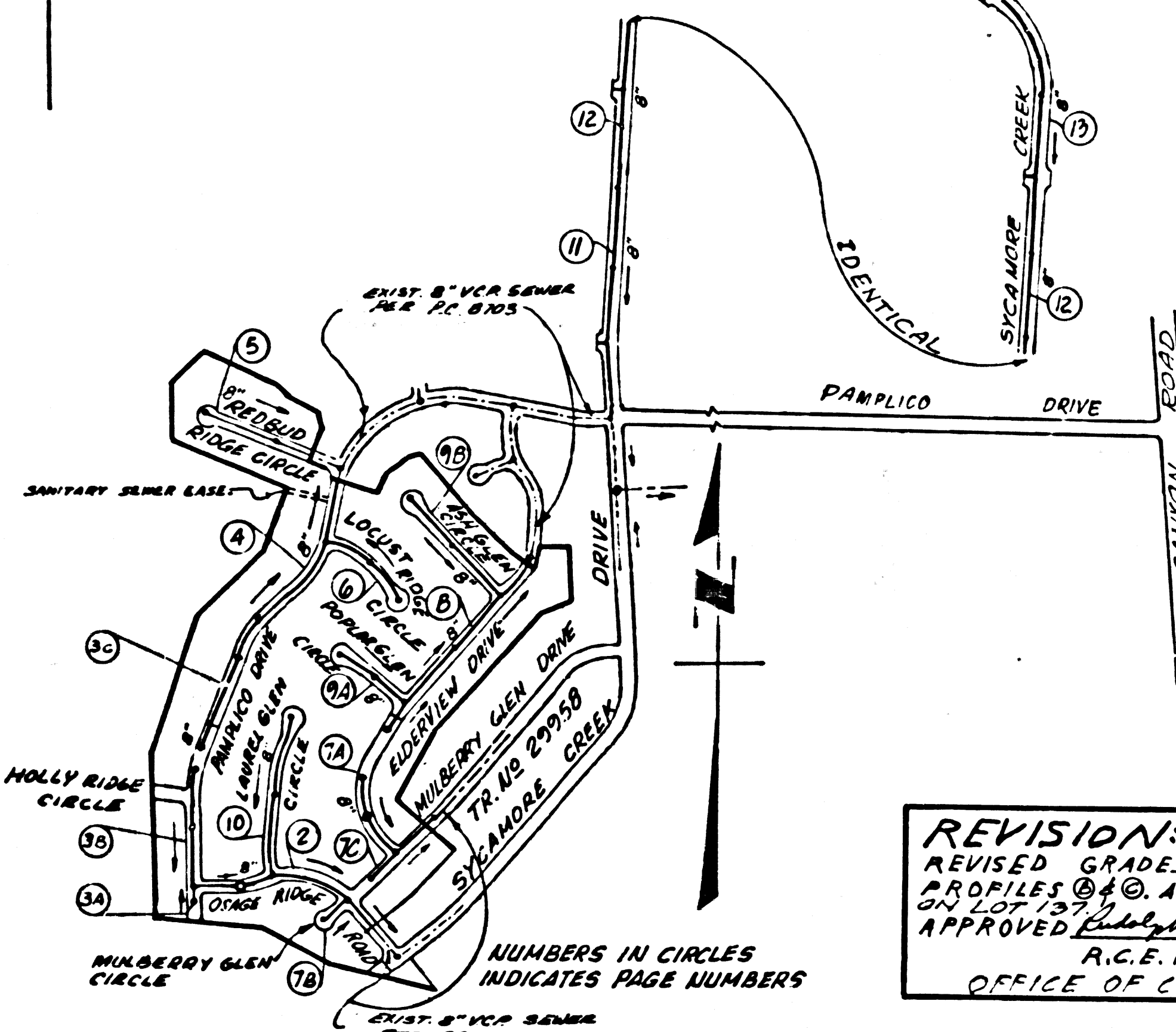


B.M. E.L. 624 ELEV. 1266.656
 LET NEAR B.C.R. @ I.E. COR. SAN FRANCISCO QUITO
 CANYON RD. E. SERVICE RD. E. LOS ROQUES
 DR. 50 FT. N. E. 18 FT. E. INT. M.K.D. (B.M. 18)
 NENHALL QUAD. 1965



INDEX MAP
 SCALE: 1"=600'
 P.C. 8927
 TRACT No. 29766

LOT 134 SERVED BY P.C. 8703
 PAGE 7

REVISION: 3
 PAGE 14, REVISE PLAN PROFILE FROM STATION 34+97 TO STATION
 39+10.00 AND ADJUST LOCATION OF 4" H.L.S. WITHIN SAME LIMITS.
 APPROVED: *[Signature]* DATE 7/11/77
 R.C.E. NO. 14390
 OFFICE OF COUNTY ENGINEER

THE FOLLOWING COUNTY ENGINEER'S STANDARD
 PLANS APPLY TO THIS PROJECT

- LEGEND
- MINIMUM PUBLIC SAFETY REQUIREMENTS S-1
 - BRICK MANHOLE S-2
 - NON REINFORCED PRECAST CONCRETE MANHOLE S-3
 - LOCKING MANHOLE FRAME AND COVER S-35
 - STANDARD MANHOLE STEP S-17
 - BEDDING FOR SEWER PIPE S-21
 - CRADLING AND ENCASUREMENT S-23
 - WYE AND TEE SUPPORT S-24
 - WYE SADDLE FOR HOUSE LATERAL S-28
 - ALLOWABLE TRENCH WIDTHS S-33

REVISION: 1
 1. PAGES 11, 12, 13 & 14, REVISE LOT LINES AND ADJUST
 HOUSE LATERAL LOCATION ADJACENT TO SYCAMORE
 CREEK DRIVE.
 2. PAGE 11, ADJUST GRADE AND ALIGNMENT OF 8" V.C.P.
 SEWER LATERAL AT M.H. STA. 6137.35.
 3. PAGES 13 & 14, REVISE ALIGNMENT OF 8" V.C.P. SEWER
 MAIN FROM STA. 6979.52 TO STA. 64723.16.
 APPROVED: *[Signature]* DATE 1-15-75
 R.C.E. NO. 14390
 OFFICE OF COUNTY ENGINEER

REVISION: 2
 REVISED GRADES ONLY ON PAGE 3
 PROFILES @ 4' AND REVISED H.L. LOCATION
 APPROVED: *[Signature]* DATE 7/3/76
 R.C.E. NO. 14390
 OFFICE OF COUNTY ENGINEER

No connections for the disposal of
 industrial wastes shall be made to
 sewers shown on these drawings
 without written permission from the
 Chief Engineer and General Manager
 of the County Sanitation District.

County Sanitation Districts shall be
 notified prior to the following so
 that required inspection can be made:
 (Phone: 962-8605)

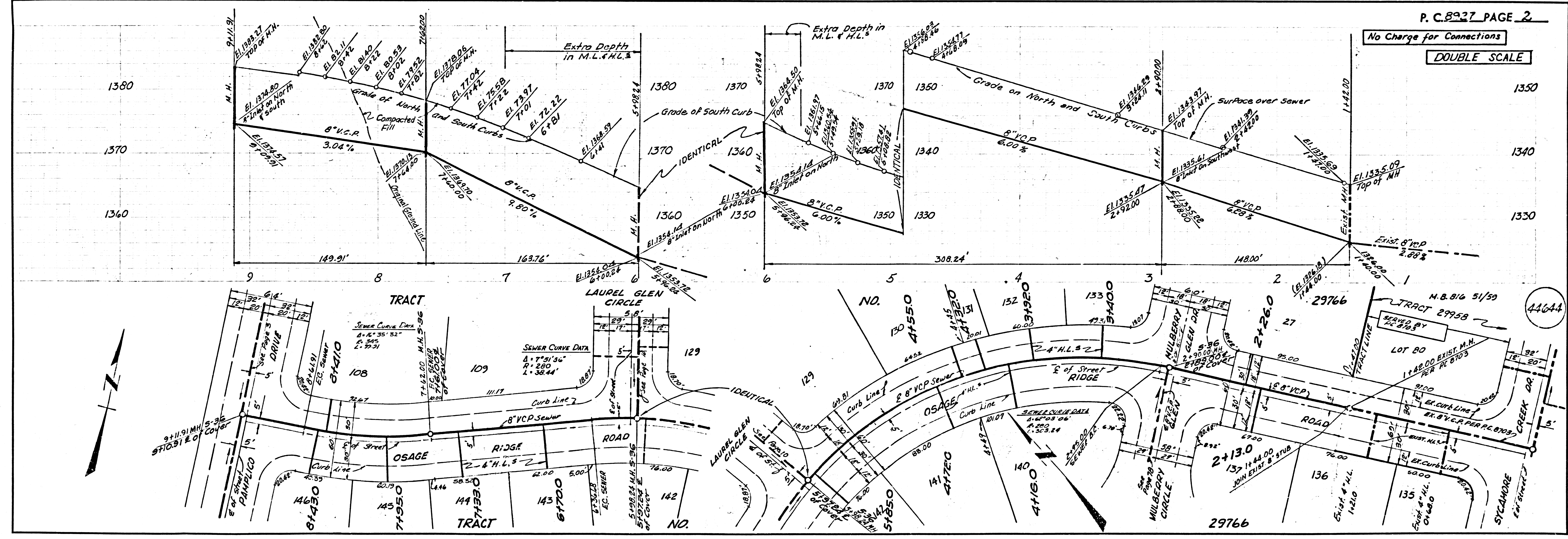
ACCEPTANCE OF THE PROJECT

NOTICE TO CONTRACTOR
 The existence and location of any underground
 utility pipes or structures shown on these plans
 are obtained by a search of the available records.
 To the best of my knowledge there are no existing
 utilities except as shown on these plans.
 The contractor is required to take due precau-
 tionary measures to protect the utility lines shown
 and any other lines not of record or not shown on
 these plans.

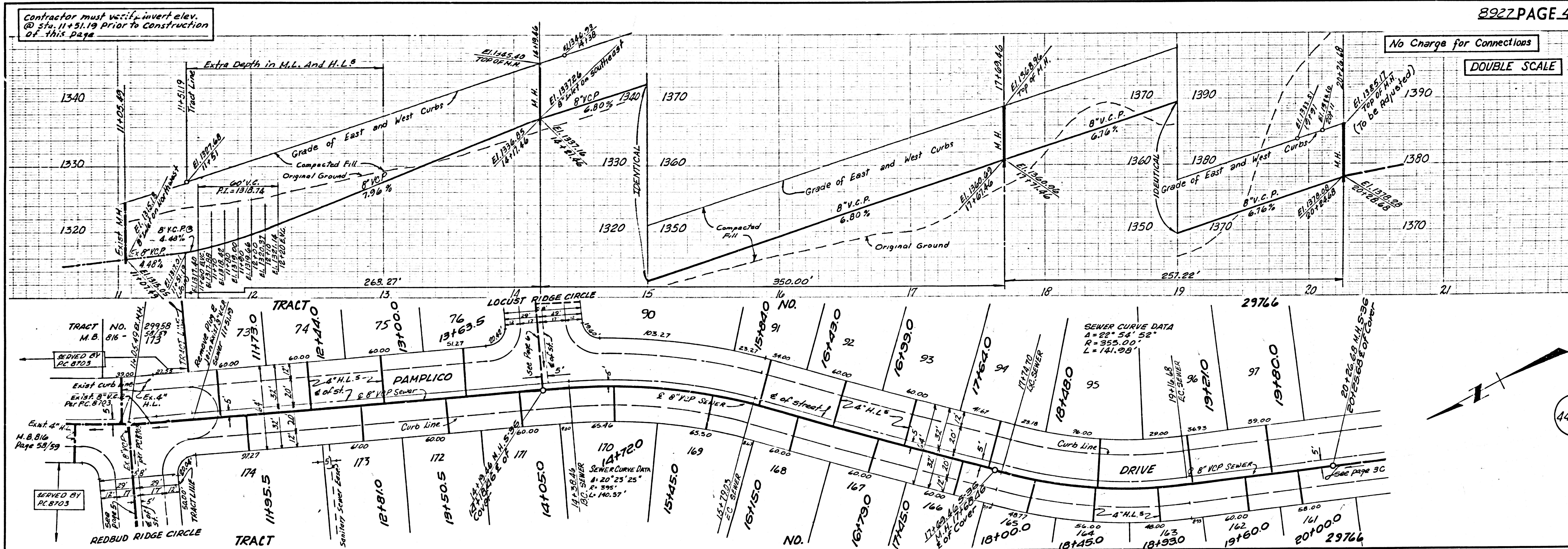
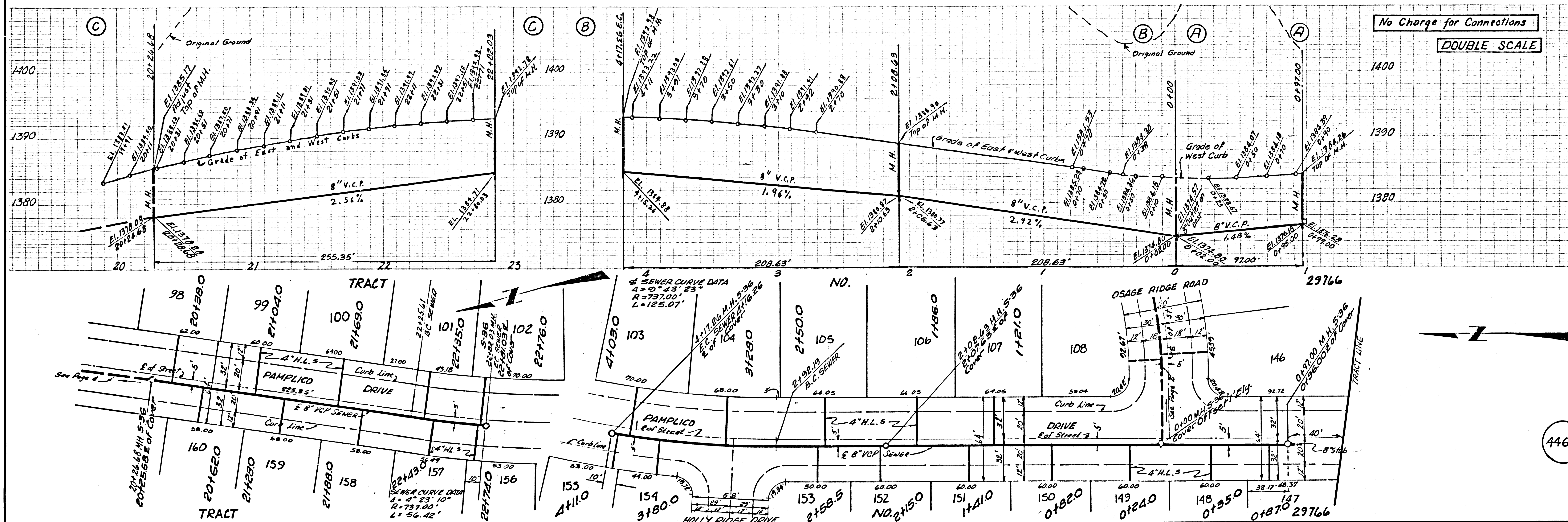
COLLECT CHARGES
 AS INDICATED

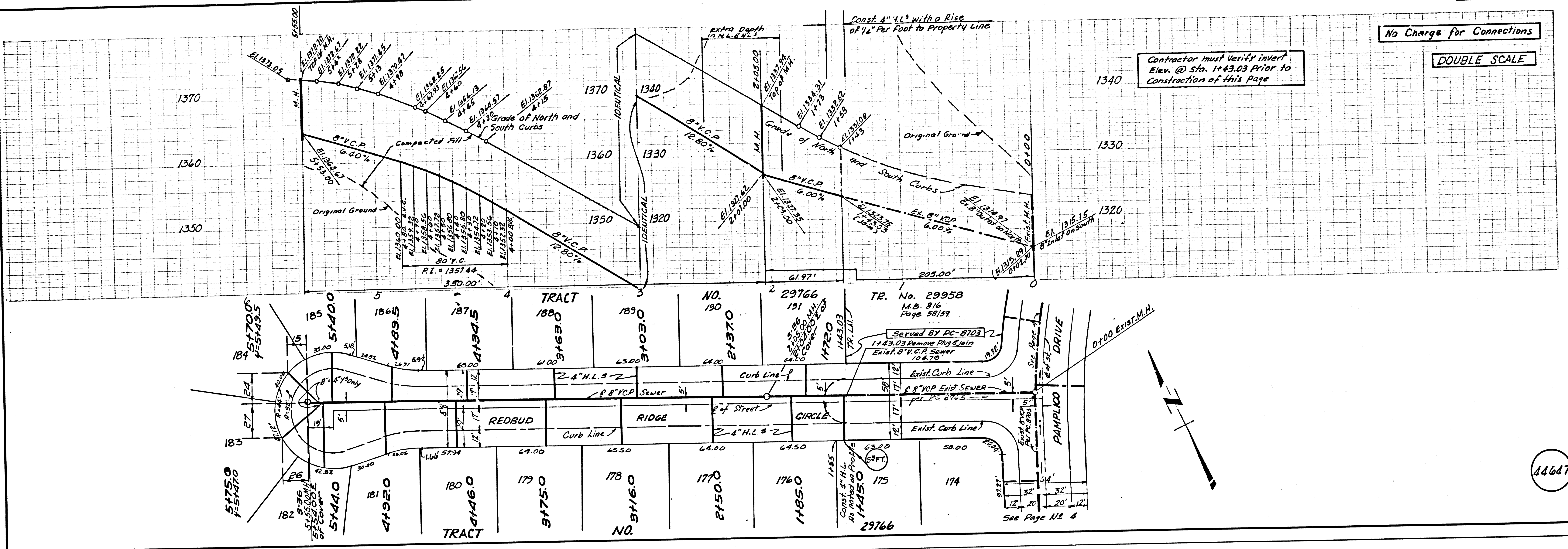
- DOUBLE SCALE
- PROFILES ALIGNMENT AND GRADE OF
SANTA CLARITA VALLEY BLDG. DIST. NO. 82
SANITARY SEWERS PAGE 1
 CONSTRUCTED IN
TRACT NO. 29766
PRIVATE CONTRACT NO. 8927
 INDEX 273 5121
 W.S. 62
 7 SHEETS, 14 PAGES
 SCALE: VERT. 1"=4' HORIZ. 1"=40' JUNE, 1973
 PREPARED IN THE OFFICES OF
Y.T.N. - LOS ANGELES
 5919 VAN NUYS BLVD. VAN NUYS, CALIF.
 BY: *[Signature]*
 REG. C.E. NO. 14,685
- FOR LEGEND SEE PLAN NO. S-1
- NOTE:
 GRADES TO WHICH THIS IMPROVEMENT IS TO BE CONSTRUCTED ARE SHOWN ON PLANS AND PROFILES. GRADE POINTS FOR TOP OF
 CURBS, CENTER LINE OF STREETS, OR CENTER LINE OF ALLEYS ARE SHOWN BY CIRCLES ON PROFILES. AT ALL POINTS BETWEEN DESIGNATED
 POINTS THE GRADE SHALL BE ESTABLISHED SO AS TO CONFORM TO A STRAIGHT LINE DRAWN BETWEEN SAID DESIGNATED POINTS.
 ELEVATIONS ARE IN FEET ABOVE U.S.C. & G.S. SEA LEVEL DATUM OF 1929.
 THIS DRAWING AND THE DATA HEREON ARE HEREBY MADE A PART OF THE SPECIFICATIONS FOR PUBLIC WORKS CONSTRUCTION (1970 EDITION
 WITH 1971 AND 1972 SUPPLEMENTS) AND COUNTY ENGINEER'S SPECIAL PROVISIONS FOR THE CONSTRUCTION OF SANITARY
 SEWERS DATED APRIL 10, 1972 AND SHALL BE PROSECUTED ONLY IN THE PRESENCE OF THE COUNTY ENGINEER.
 BEFORE WORK CAN BE STARTED, THE CONTRACTOR MUST OBTAIN A PERMIT TO EXCAVATE IN COUNTY TRACTS FROM THE L.A. COUNTY
 ROAD DIST. DISTRICT OFFICE, 100 S. PARK STREET, LOS ANGELES, CALIF. 90012, AND EAST LATERAL, HWY. 1, DOWNEY, CALIF., OR
 SANTA CLARITA VALLEY REGIONAL OFFICE, TO COVER THE COST OF CONSTRUCTION INSPECTION AND RECORD PLANS.
 APPROVAL OF THIS PLAN BY THE COUNTY OF LOS ANGELES DOES NOT CONSTITUTE A REPRESENTATION AS TO THE ACCURACY OF THE
 LOCATION OF OR THE EXISTENCE OR NON-EXISTENCE OF ANY UNDERGROUND UTILITY PIPE, OR STRUCTURE WITHIN THE LIMITS OF THIS
 PROJECT. THIS NOTE APPLIES TO ALL PAGES.
 IF WORK IS TO BE DONE IN A STATE HIGHWAY, A PERMIT MUST BE OBTAINED FROM THE STATE OF CALIFORNIA, DIVISION OF HIGHWAYS,
 120 SOUTH SPRING STREET, LOS ANGELES, CALIFORNIA.
1. PROVIDE STAKES ON THE PROPERTY LINE OR PROPERTY LINES PRODUCED AT RIGHT ANGLES TO THE SEWER LINE AT THE CENTER LINE
 OF EACH MANHOLE.
 2. NO REPRESENTATIVE OF THE COUNTY ENGINEER WILL SURVEY OR LAY OUT ANY PORTION OF THE WORK.
 3. THE PRIVATE ENGINEER SHALL FURNISH THE COUNTY ENGINEER WITH GRADE SHEETS AND STATIONING FOR ALL HOUSE LATERALS
 AND VENT BRANCHES AND SHALL PROVIDE STAKES FOR THEM AT THEIR PROPER LOCATIONS WITH STATIONING PLAINLY MARKED.
 ALL HOUSE LATERALS SHALL BE CONSTRUCTED IN A STRAIGHT ALIGNMENT AT RIGHT ANGLES FROM THE MAIN LINE SEWER EXCEPT
 AS SHOWN ON THE PLANS. HOUSE LATERALS FROM CHIMNEYS SHALL NOT HAVE AN ANGLE OF LESS THAN 45° WITH THE MAIN
 SEWER. ANY CHANGE IN ALIGNMENT SHALL BE REQUESTED IN WRITING BY THE PRIVATE ENGINEER.
 4. THE PRIVATE ENGINEER SHALL FURNISH THE HOUSE LATERAL DEPTH AT THE PROPERTY LINE BELOW THE TOP OF 1" MB ELEVATION FOR
 EACH HOUSE LATERAL ON THE GRADE SHEET.
 5. NO REVISIONS SHALL BE MADE IN THESE PLANS WITHOUT THE APPROVAL OF THE COUNTY ENGINEER.
 6. THE CONTRACTOR SHALL NOTIFY THE CONSTRUCTION DIVISION BY TELEPHONE, MADISON 9-4747, EXT. 81531, AT LEAST TWENTY-
 FOUR HOURS BEFORE STARTING ANY WORK UNDER THIS CONTRACT.
 7. ALL STRUCTURES SHALL BE EITHER BRICK MANHOLES PER S-3, OR PRECAST CONCRETE MANHOLES PER S-35,
 EXCEPT AS NOTED.
 8. ALL JOINTS BETWEEN CAST IRON PIPE AND VITRIFIED CLAY PIPE SHALL BE MADE WITH A RUBBER SLEEVE
 JOINT TYPE "C" OR "D" (WITH BUSHING IF NECESSARY) PER STANDARD SPECS. SEC. 208-2.
 9. MANHOLE TOPS IN UNIMPROVED PORTION OF WAY TO BE SIX INCHES ABOVE FINISHED GRADE.
 10. USE EXTRA STRENGTH PIPE. ALL PIPE IS STANDARD DEPTH EXCEPT AS NOTED.
 11. VITRIFIED CLAY PIPE JOINTS SHALL BE TYPE "O" "F" OR "B" PER STANDARD SPECIFICATIONS SECTION 208-2.
 12. IF A POWER POLE IS WITHIN THREE FEET OF THE SEWER, THE SEWER SHALL BE ENCASED, PER S-23, TWO FEET ON EACH SIDE FROM
 THE POINT OF INTERFERENCE.
 13. IF DURING THE COURSE OF CONSTRUCTION IT IS DETERMINED THAT THERE IS LESS THAN FOUR FEET OF COVER OVER THE TOP OF A
 MAIN LINE OR HOUSE LATERAL V.C.P. SEWER WHICH IS NOT INDICATED ON THE PLANS, THE PIPE SHALL BE ENCASED PER S-23, UN-
 LESS OTHERWISE APPROVED BY THE COUNTY ENGINEER.
 14. HOUSE LATERALS TO BE CONSTRUCTED WITH INVERTS AT PROPERTY LINE 8 FEET BELOW CURB GRADE EXCEPT AS NOTED.
 15. RESURFACE ALL TRENCHES WITHIN PAVED AREAS TO MEET L.A. COUNTY ROAD DEPT. OR CALIFORNIA STATE HIGHWAY REQUIREMENTS
 IN ACCORDANCE WITH PERMITS.
 16. SEWER TO BE TESTED FOR LEAKAGE PER SEC. 306-7.37 OF STANDARD SPECS. IF SPECIAL PROVISIONS.
 17. TEE OR WYE BRANCHES MAY BE USED FOR CONNECTION TO MAINLINE SEWER EXCEPT AS NOTED.
 18. REFER TO SECTION 7-0.1 OF THE STANDARD SPEC. REGARDING SAFETY ORDERS.
 19. FULL COMPLIANCE WITH SECTION 504.1.5.5 OF THE SPECIAL PROVISIONS WILL BE REQUIRED FOR BACKFILL IN
 STREETS. CERTIFICATION OF BACKFILL COMPACTION AND SAND EQUIVALENTS BY A QUALIFIED REGISTERED
 TESTING LABORATORY SHALL BE PROVIDED BY THE PERMITTEE PRIOR TO THE ISSUANCE OF A
 CERTIFICATE OF PARTIAL ACCEPTANCE.

COUNTY OF LOS ANGELES, CALIFORNIA
 HARVEY T. BRANDT, COUNTY ENGINEER J. D. PARKHURST, CHIEF ENGINEER
 CO. SANIT. NO. 29766
 APPROVED BY: *[Signature]* 9/22/73 APPROVED BY: *[Signature]*
 REGIONAL ENGINEER DATE OFFICE ENGINEER
 CHECKED BY: *[Signature]* 9/27/73
 REG. C.E. NO. 14390
 44643
 J.N. 0250.02



P.C. 8927 PAGE 2
 DOUBLE SCALE
 No Charge for Connections



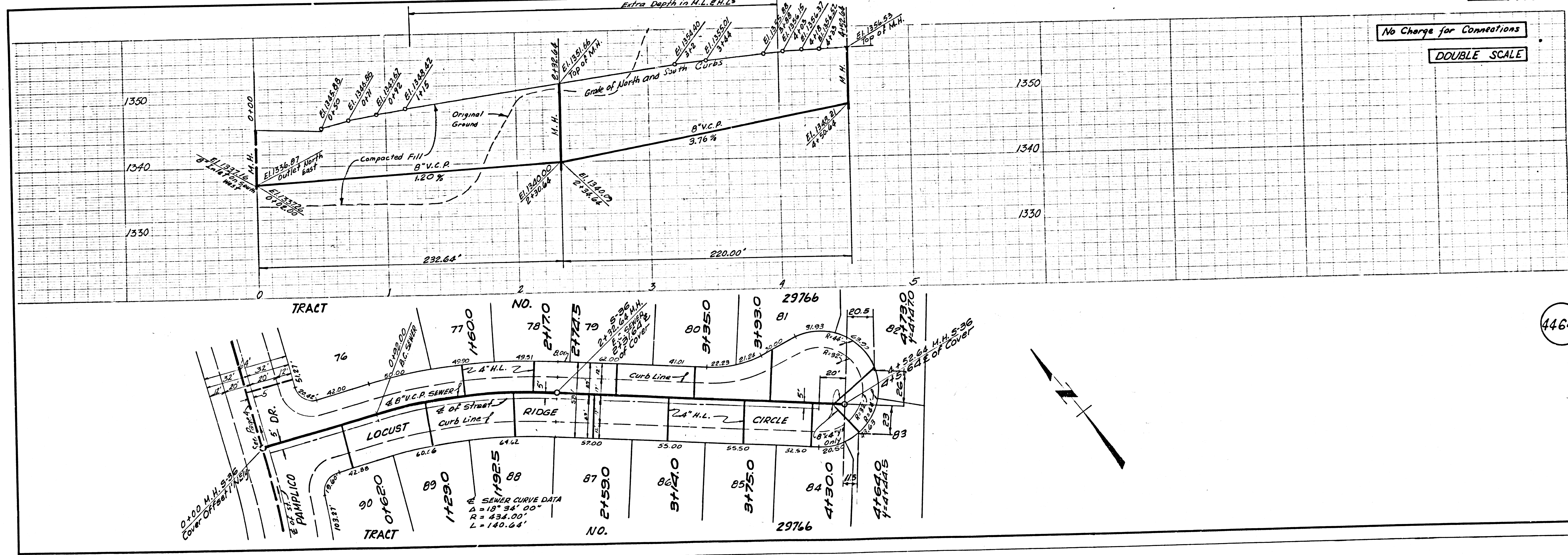


Contractor must verify invert Elev. @ Sta. 1+43.03 Prior to Construction of this Page

No Charge for Connections

DOUBLE SCALE

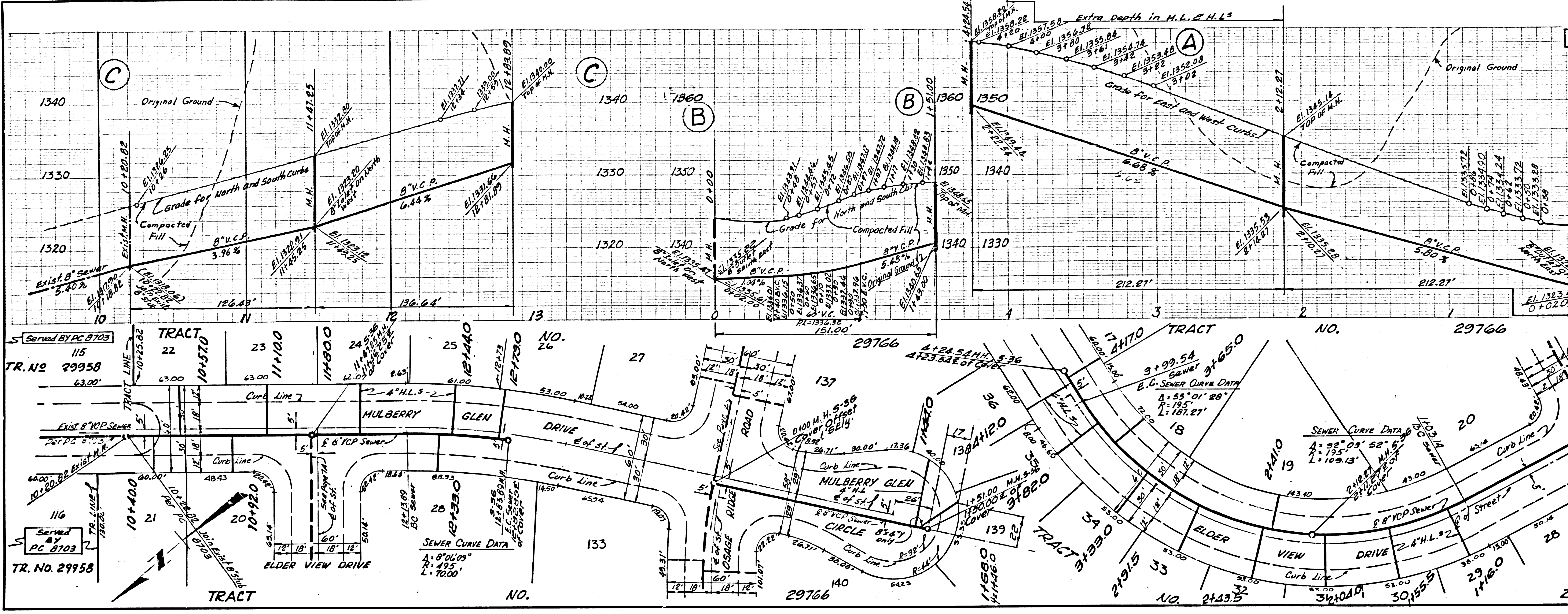
44647



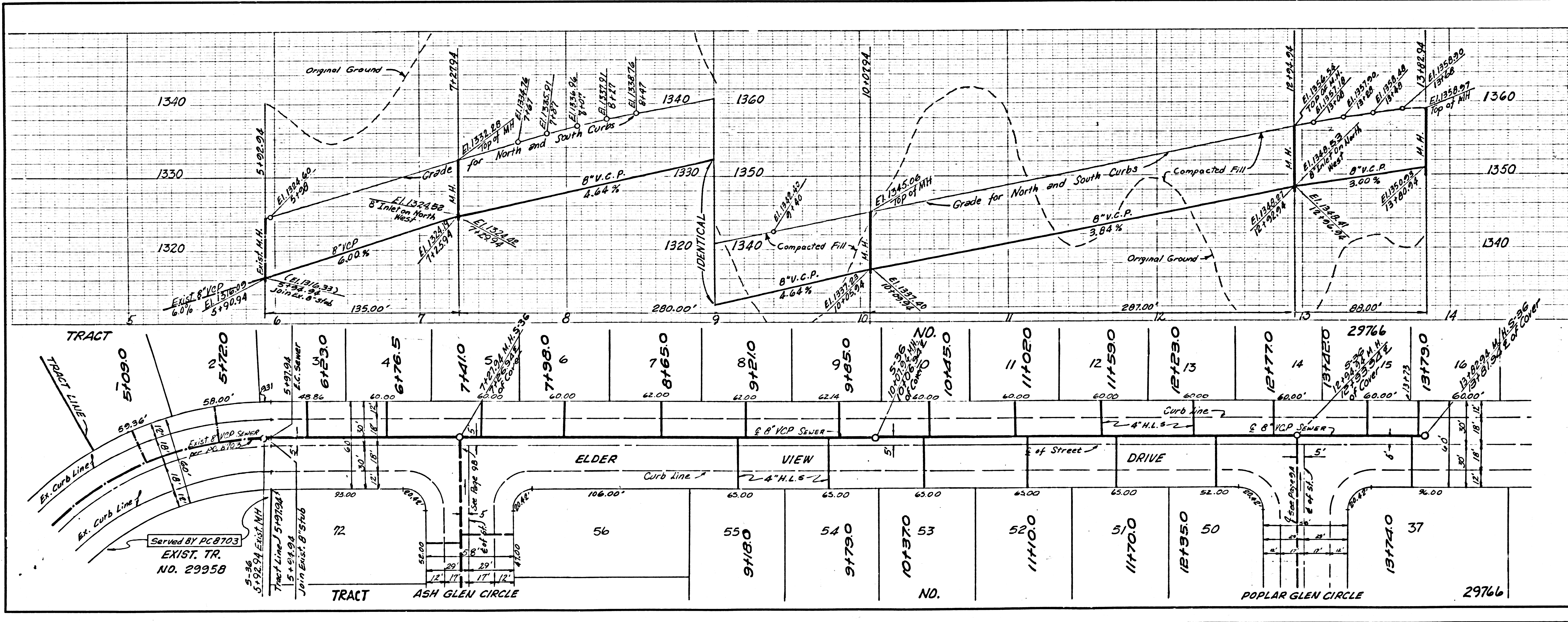
No Charge for Connections

DOUBLE SCALE

44648



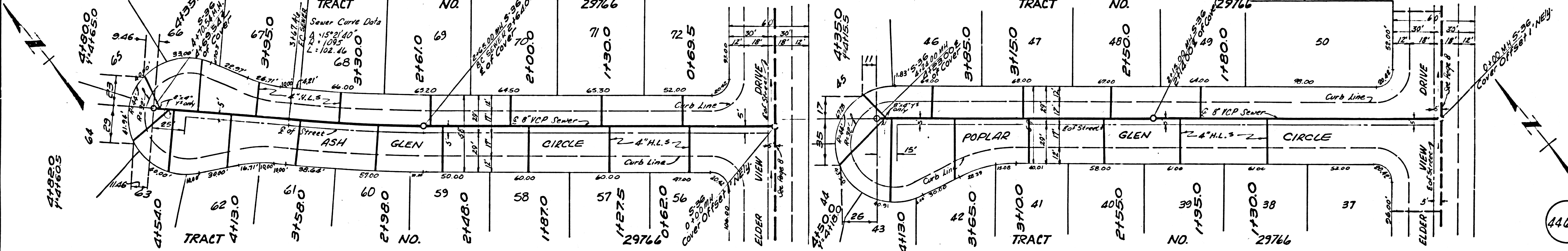
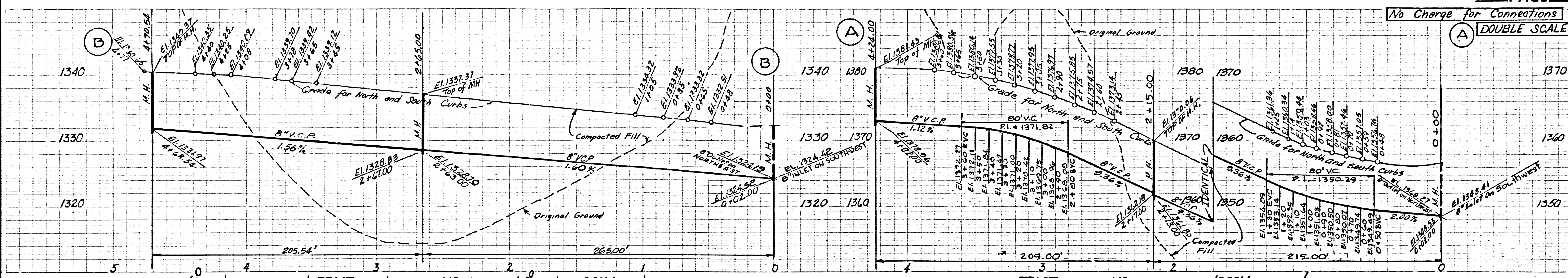
44649



44650

No Charge for Connections

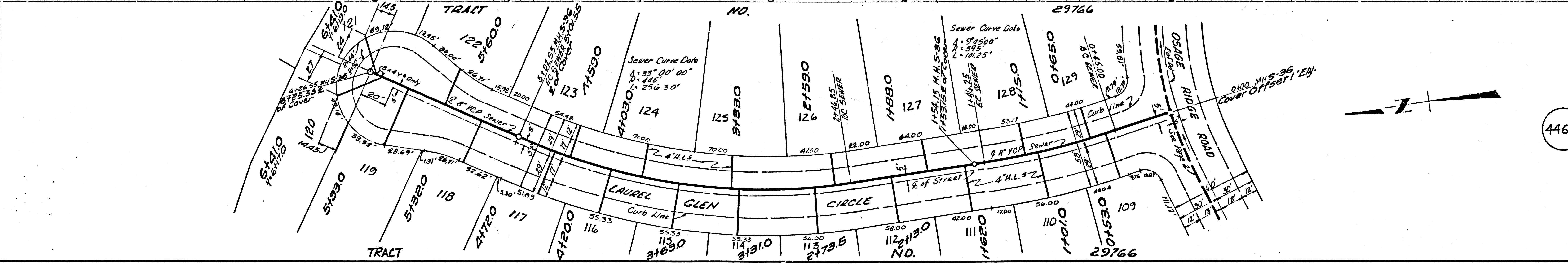
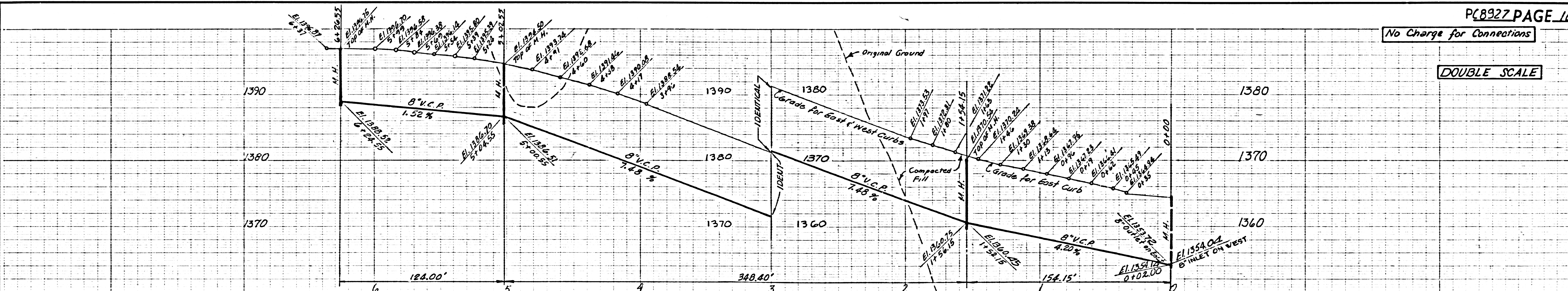
DOUBLE SCALE



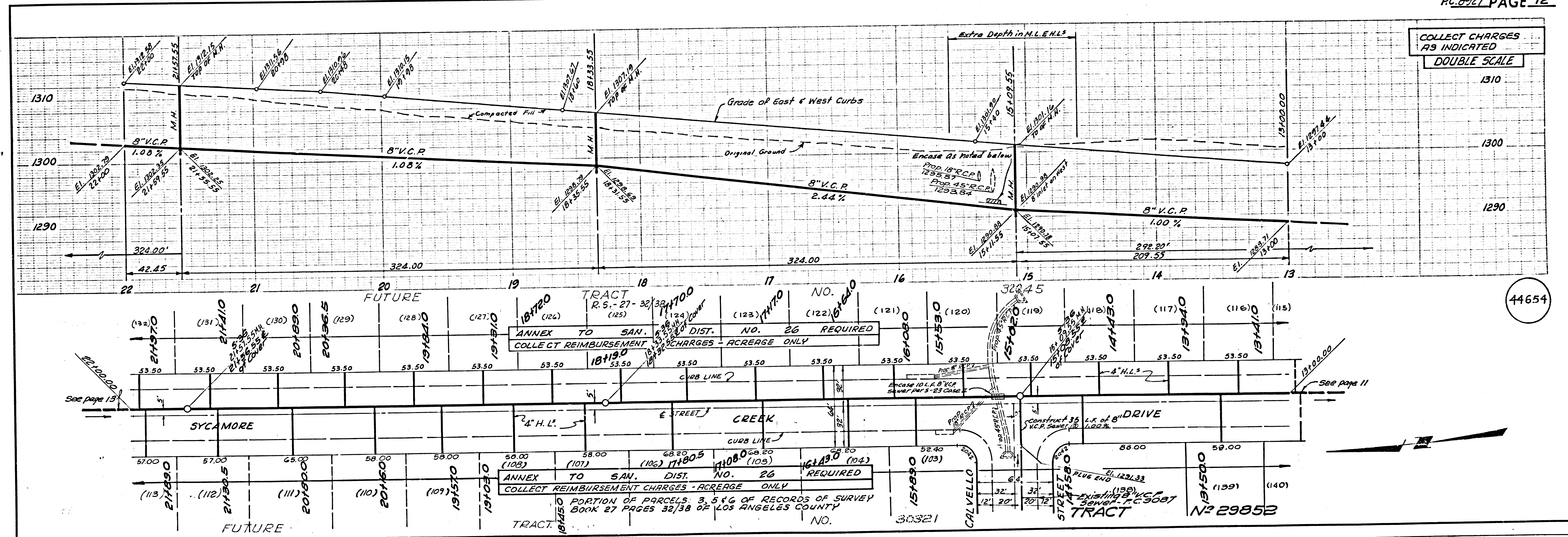
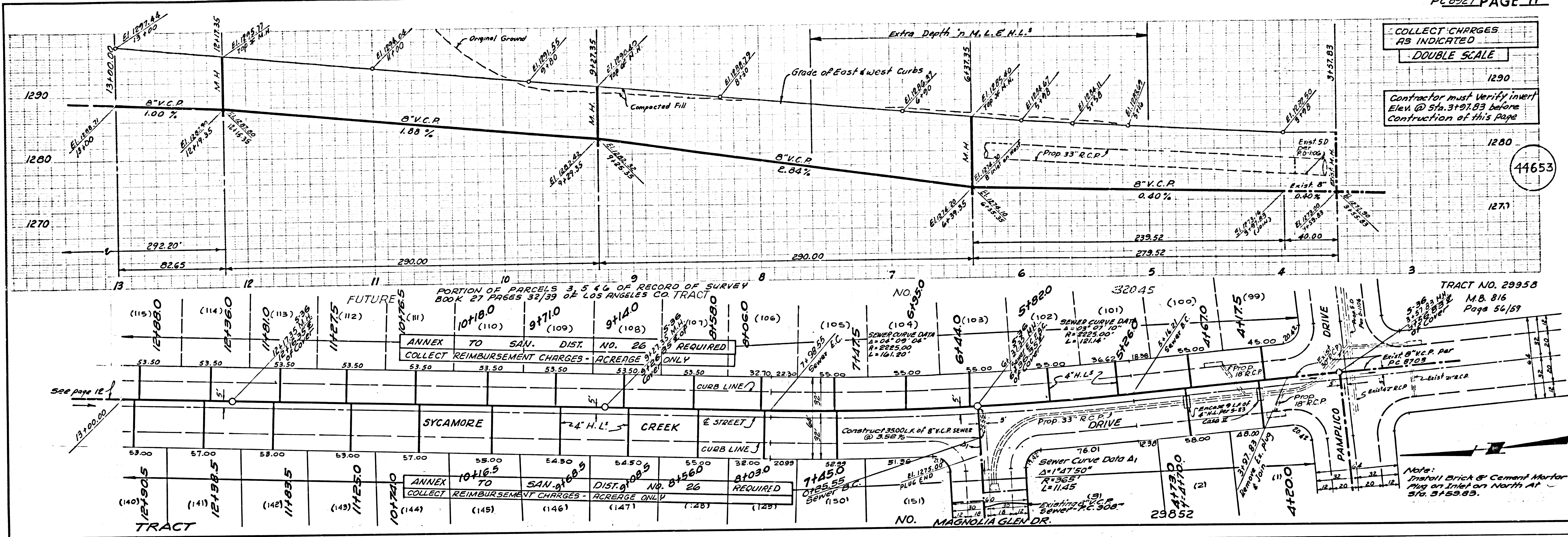
44651

No Charge for Connections

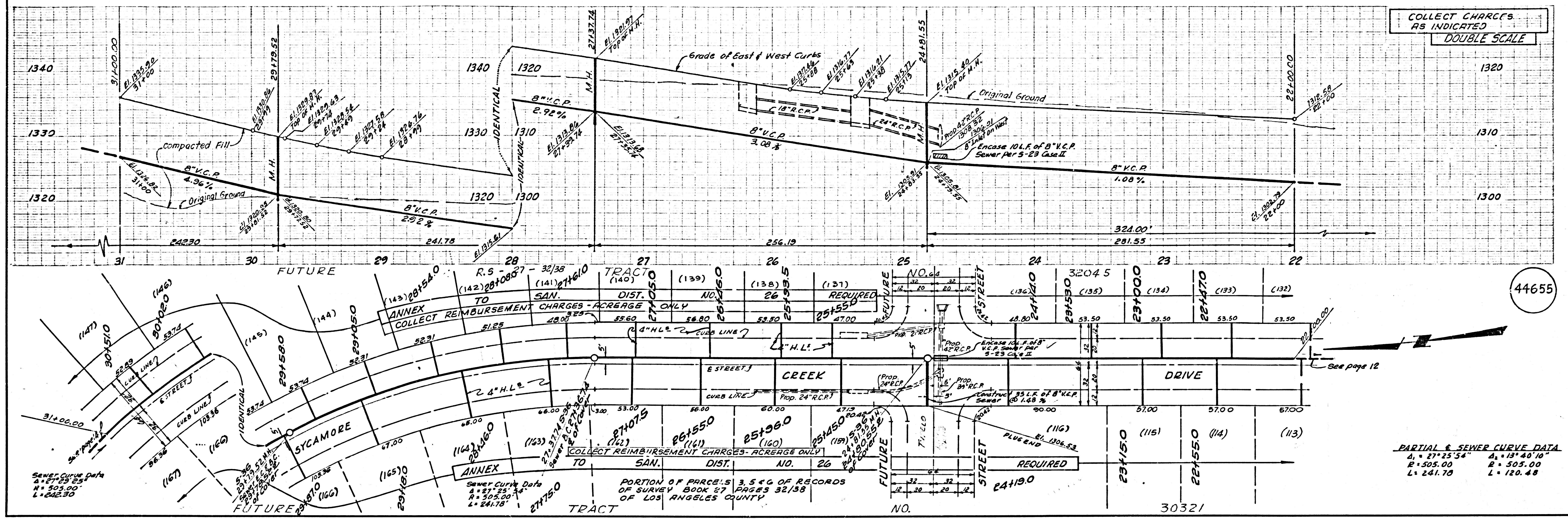
DOUBLE SCALE



44652



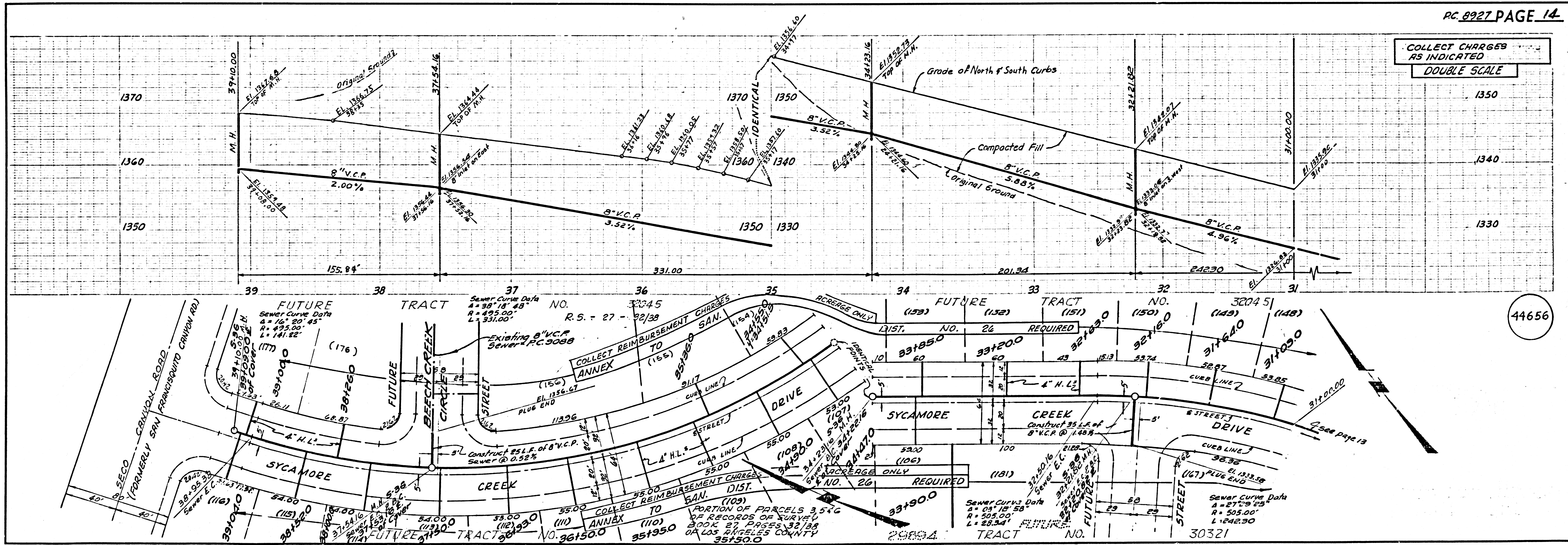
COLLECT CHARGES AS INDICATED
DOUBLE SCALE



44655

PARTIAL SEWER CURVE DATA
 Δ = 27° 25' 54" Δ = 13° 40' 10"
 R = 505.00 R = 505.00
 L = 241.70 L = 120.48

COLLECT CHARGES AS INDICATED
DOUBLE SCALE



44656