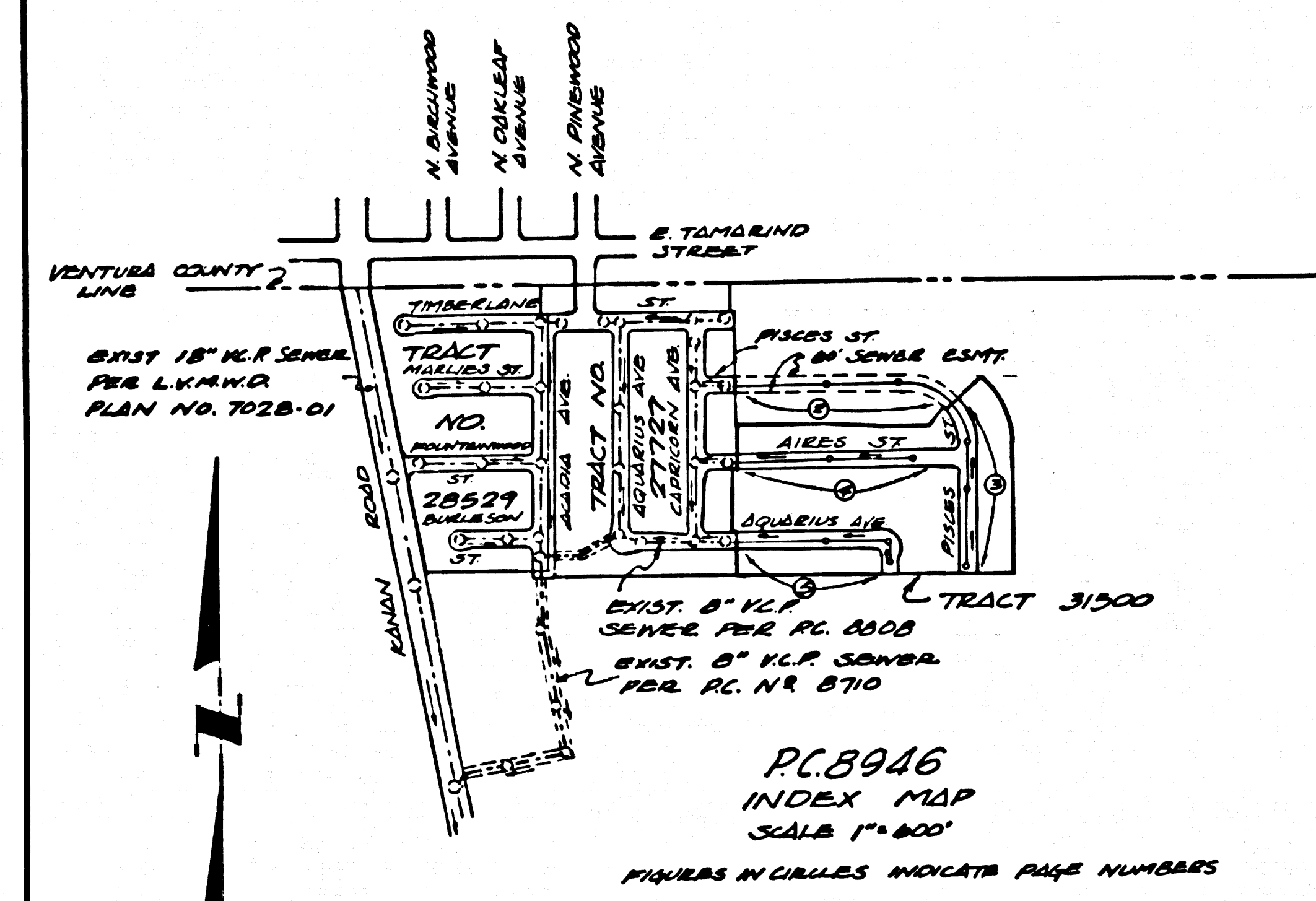


TRACT NO. 31500
PRIVATE CONTRACT NO. 8946

W.S. 90, A-1
 3 SHEETS; 5 PAGES
 SCALE: VERT. 1"=4' HORIZ. 1"=40'
 JUNE 1, 1973
 PREPARED IN THE OFFICES OF
 VENTURA ENGINEERING COMPANY
 19730 VENTURA BOULEVARD
 WOODLAND HILLS, CALIFORNIA PHONE: 948-5508
 BY: *Vincent Meier*
 REG. C. E. No. 14815

B.M. BY 9010 ELEV. 950.266
 ELEV. 950.266 RD. DEPT. BM TAG IN SOUTH END
 CATCH BASIN 410 FT. E/O KANAN RD @ 0.95
 MILES N/O THOUSAND OAKS BLVD, 0.16 MILES
 E/O L.A. COUNTY & VENTURA CO. LINE
 MALIBU QUAD. 19.72



REVISION NO. 1 JUNE 14, 1974
 EXTENDED 8" V.C.P. 25 FEET AND
 MOVED M.H. FROM STA. 8+20.00
 TO STA. 8+45.00 AS SHOWN ON
 PAGE 4.
 APPROVED: *Herbert Jones* 1976
 MALIBU REGIONAL OFFICE R.E.N.B.

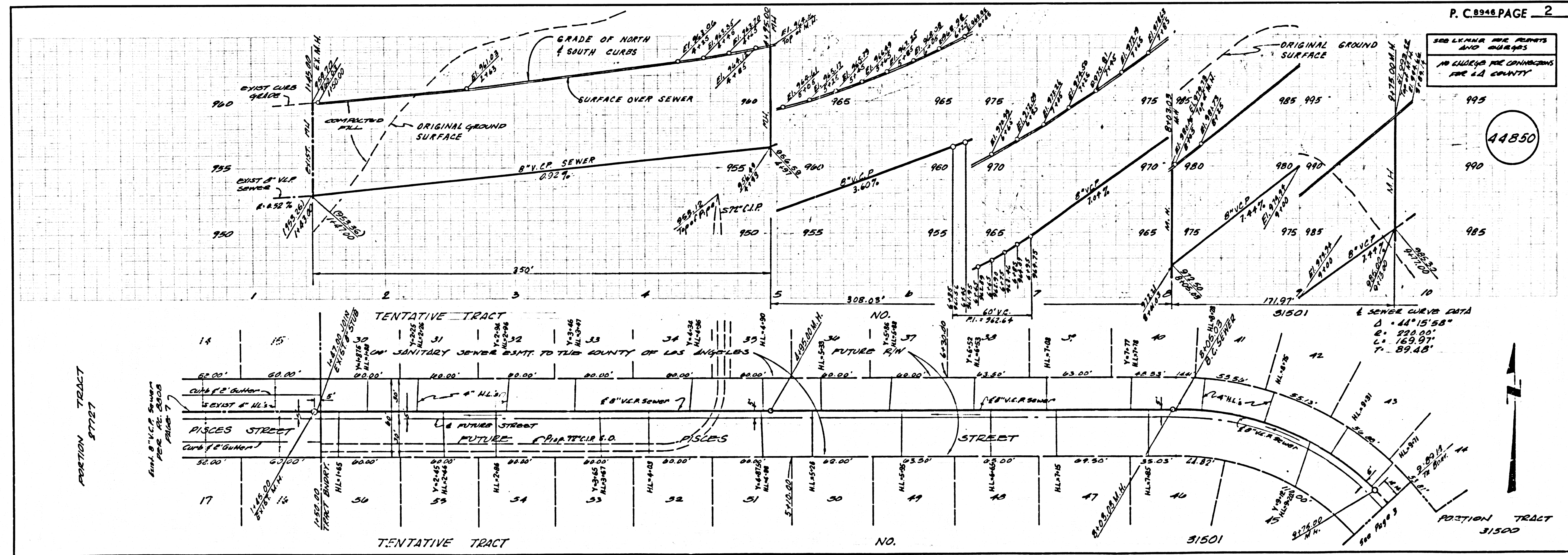
- GENERAL NOTES:**
1. REVISIONS ARE IN RED UNLESS OTHERWISE NOTED.
 2. NO REVISIONS SHALL BE MADE IN THESE PLANS WITHOUT THE APPROVAL OF THE COUNTY ENGINEER.
 3. NO REPRESENTATIVE OF THE COUNTY ENGINEER WILL SURVEY OR LAY OUT ANY PORTION OF THE WORK.
 4. GRADES TO WHICH THIS IMPROVEMENT IS TO BE CONSTRUCTED ARE SHOWN ON PLANS AND PROFILES. GRADE POINTS FOR TOP OF CURBS, CENTER LINE OF STREETS, OR CENTER LINE OF ALLEYS ARE SHOWN BY CIRCLES ON PROFILES. AT ALL POINTS BETWEEN DESIGNATED POINTS THE GRADE SHALL BE ESTABLISHED TO AS TO CONFORM TO A STRAIGHT LINE DRAWN BETWEEN SAID DESIGNATED POINTS.
 5. THE PRIVATE ENGINEER SHALL FURNISH THE COUNTY ENGINEER WITH GRADE SHEETS AND STATIONING FOR ALL HOUSE LATERALS AND 4" OR 6" BRANCHES AND SHALL PROVIDE STAKES FOR THEM AT THEIR PROPER LOCATIONS WITH STATIONING PLAINLY MARKED. ALL HOUSE LATERALS SHALL BE CONSTRUCTED IN A STRAIGHT ALIGNMENT AT RIGHT ANGLES FROM THE MAIN LINE SEWER EXCEPT AS SHOWN ON THE PLANS. HOUSE LATERALS FROM CHIMNEYS SHALL NOT HAVE AN ANGLE OF LESS THAN 45° WITH THE MAIN LINE SEWER. ANY CHANGE IN ALIGNMENT SHALL BE REQUESTED IN WRITING BY THE PRIVATE ENGINEER.
 6. THE PRIVATE ENGINEER SHALL FURNISH THE HOUSE LATERAL DEPTH AT THE PROPERTY LINE BELOW THE TOP OF CURB ELEVATION FOR EACH HOUSE LATERAL ON THE GRADE SHEET.
 7. BEFORE WORK CAN BE STARTED, THE CONTRACTOR MUST OBTAIN A PERMIT TO EXCAVATE IN COUNTY STREETS FROM THE L. A. COUNTY ROAD DEPT., DISTRICT OFFICE NO. 1, AND PAY A FEE TO THE COUNTY ENGINEER, 5167 EAST PARSONS HIGHWAY, DOWNY, CALIFORNIA 90241. REGIONAL OFFICE, TO COVER THE COST OF CONSTRUCTION INSPECTION AND RECORD PLANS.
 8. IF WORK IS TO BE DONE IN A STATE HIGHWAY, A PERMIT MUST BE OBTAINED FROM THE STATE OF CALIFORNIA, DIVISION OF HIGHWAYS, 126 SOUTH SPRING STREET, LOS ANGELES, CALIFORNIA.
 9. APPROVAL OF THIS PLAN BY THE COUNTY OF LOS ANGELES DOES NOT CONSTITUTE A REPRESENTATION AS TO THE ACCURACY OF THE LOCATION OF OR THE EXISTENCE OR NON-EXISTENCE OF ANY UNDERGROUND UTILITY PIPE, OR STRUCTURE WITHIN THE LIMITS OF THIS PROJECT. THIS NOTE APPLIES TO ALL PAGES.
 10. REFER TO SECTION 7-18.4.1 OF THE STANDARD SPECIFICATIONS, REGARDING SAFETY ORDERS.
 11. PRIOR TO ISSUANCE OF THE REQUIRED SEWER CONSTRUCTION PERMIT BY THE COUNTY ENGINEER, THE CONTRACTOR SHALL OBTAIN A PERMIT TO EXCAVATE FROM THE STATE OF CALIFORNIA, DIVISION OF INDUSTRIAL SAFETY.

- CONSTRUCTION NOTES:**
1. WORK SHALL BE CONSTRUCTED ACCORDING TO THE STANDARD SPECIFICATIONS FOR PUBLIC WORKS CONSTRUCTION 1972 EDITION AND COUNTY ENGINEER SPECIAL PROVISIONS FOR THE CONSTRUCTION OF SANITARY SEWERS DATED March 4, 1974. NO WORK SHALL BE PROCEEDED UNLESS IN THE PRESENCE OF THE COUNTY ENGINEER.
 2. THE CONTRACTOR SHALL NOTIFY THE DESIGN DIVISION BY TELEPHONE, 824-7288, AT LEAST TWENTY-FOUR HOURS BEFORE STARTING ANY WORK UNDER THIS CONTRACT.
 3. HOUSE LATERALS TO BE CONSTRUCTED WITHIN PROPERTY LINE 4 FEET BELOW CURB GRADE EXCEPT AS NOTED.
 4. WYE OR BRANCHES MAY BE USED FOR CONNECTIONS TO MAINLINE SEWERS EXCEPT AS NOTED.
 5. ALL STRUCTURES SHALL BE EITHER BRICK MANHOLES PER S-26 OR PRECAST CONCRETE MANHOLES PER S-26, EXCEPT AS NOTED.
 6. PROVIDE STAKES ON THE PROPERTY LINE OR PROPERTY LINES PRODUCED AT RIGHT ANGLES TO THE SEWER LINE AT THE CENTER LINE OF EACH MANHOLE.
 7. MANHOLE TOPS IN UNIMPAVED RIGHTS OF WAY TO BE SIX INCHES ABOVE FINISHED GRADE.
 8. VERIFIED CLAY PIPE JOINTS SHALL BE TYPE "B", "F", OR "G" PER STANDARD SPECIFICATIONS SECTION 304-2.
 9. IF A POWER POLE IS WITHIN THREE FEET OF THE SEWER, THE SEWER SHALL BE ENCASED, PER S-23, CASE II, TWO FEET ON EACH SIDE FROM THE POINT OF INTERFERENCE.
 10. IF DURING THE COURSE OF CONSTRUCTION IT IS DETERMINED THAT THERE IS LESS THAN FOUR FEET OF COVER OVER THE TOP OF A MAIN LINE OR HOUSE LATERAL V.C.P. SEWER WHICH IS NOT INDICATED ON THE PLANS, THE PIPE SHALL BE ENCASED PER S-23, CASE II UNLESS OTHERWISE APPROVED BY THE COUNTY ENGINEER.
 11. ALL JOINTS BETWEEN CLAY PIPE AND VERIFIED CLAY PIPE SHALL BE MADE WITH A RUBBER SLEEVE JOINT, TYPE "C" OR "D", WITH BUSHING, IF NECESSARY PER STANDARD SPECIFICATIONS, SECTION 304-2.
 12. SEWERS TO BE TESTED FOR LEAKAGE PER SECTION 804-1.4 OF THE STANDARD SPECIFICATIONS AND SPECIAL PROVISIONS.
 13. RESURFACE ALL TRENCHES WITHIN PAVED AREAS TO MEET L.A. COUNTY ROAD DEPT. OR CALIFORNIA STATE HIGHWAY REQUIREMENTS IN ACCORDANCE WITH PERMITS.
 14. ALL EXCAVATION SHALL BE COMPLETED TO AT LEAST 20% OF MAXIMUM DENSITY PER ASTM. ALL EXCAVATION SHALL BE SUBMITTED TO THE CONSTRUCTION DIVISION.
 15. REPLACE EXISTING DRAINAGE DITCHES OR DRAINAGE SWALES WITHIN EXISTING RIGHTS OF WAY AND OVERLAP ALL EXISTING AND NEW PUBLIC WORKS CONSTRUCTION.
 16. ALL CONSTRUCTION SHALL BE IN ACCORDANCE WITH SECTION 804-1.5 OF THE STANDARD SPECIFICATIONS AND SPECIAL PROVISIONS. QUALIFIED REGISTERED TESTING LABORATORIES SHALL BE DESIGNATED BY THE CONTRACTOR PRIOR TO THE ISSUANCE OF A CERTIFICATE OF MATERIAL ACCEPTANCE.

THE FOLLOWING LATEST REVISED STANDARD PLANS ON FILE IN THE OFFICE OF THE COUNTY ENGINEER SHALL APPLY IN THE EXECUTION OF THIS PROJECT:

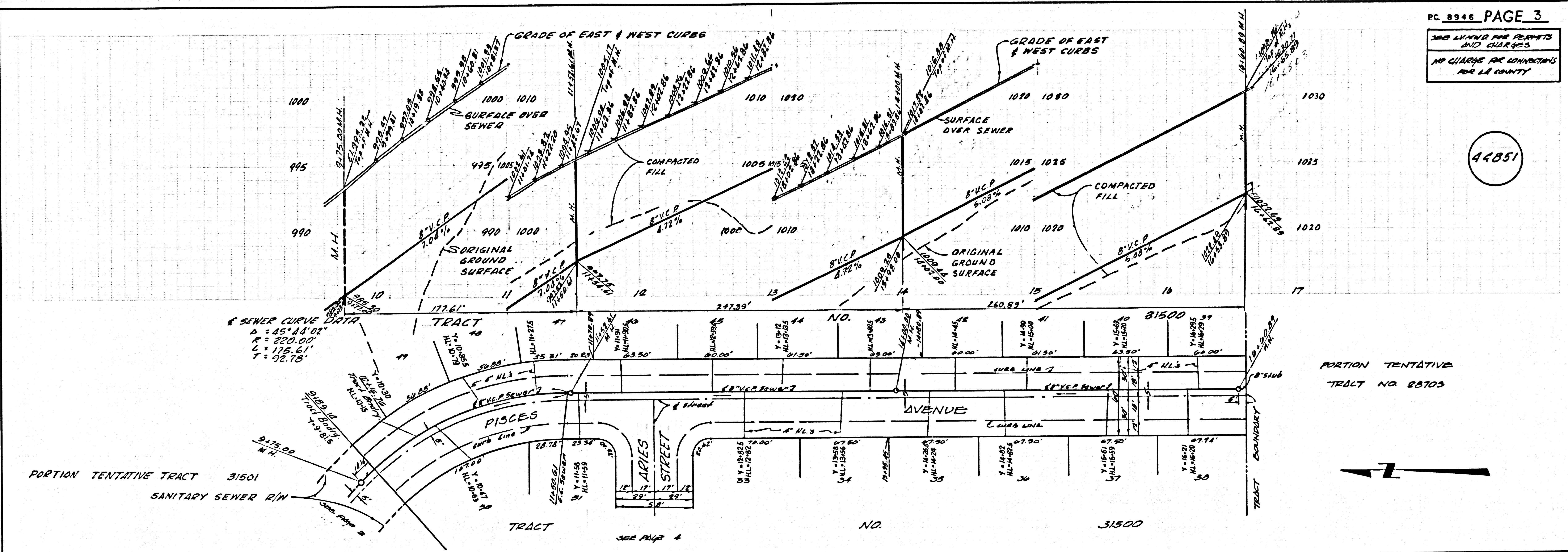
LEGEND	S-1
MINIMUM PUBLIC SAFETY REQUIREMENTS	S-2
BRICK MANHOLE	S-3
STANDARD MANHOLE STEP	S-4
BRIDGING FOR SEWER PIPE	S-5
CRADLING AND ENCASEMENT	S-6
WYE OR TEE SUPPORT	S-7
ALLOWABLE TRENCH WIDTHS	S-8
LOCKING MANHOLE FRAME AND COVER	S-9
NON-REINFORCED PRECAST CONCRETE MANHOLE	S-10

COUNTY OF LOS ANGELES, CALIFORNIA
 HARVEY T. BRANDT, COUNTY ENGINEER LAS VIRGENES MUNICIPAL WATER DISTRICT
 APPROVED: *Herbert Jones* 8-16-74 APPROVED: *H.W. Stokes*
 REGIONAL ENGINEER DATE GENERAL MANAGER, CHIEF ENGINEER
 CHECKED: *Sheelagh Jones* 4-16-74
 REG. C. E. No. 19166 DATE
 CALABASAS RDG. DIST. 9.1 J. N. 0250.02



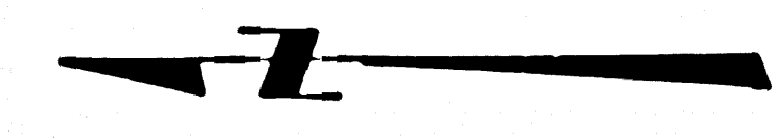
SEE PLAN FOR POINTS AND CURVES
NO CHANGE FOR CONNECTIONS FOR LA COUNTY

44851



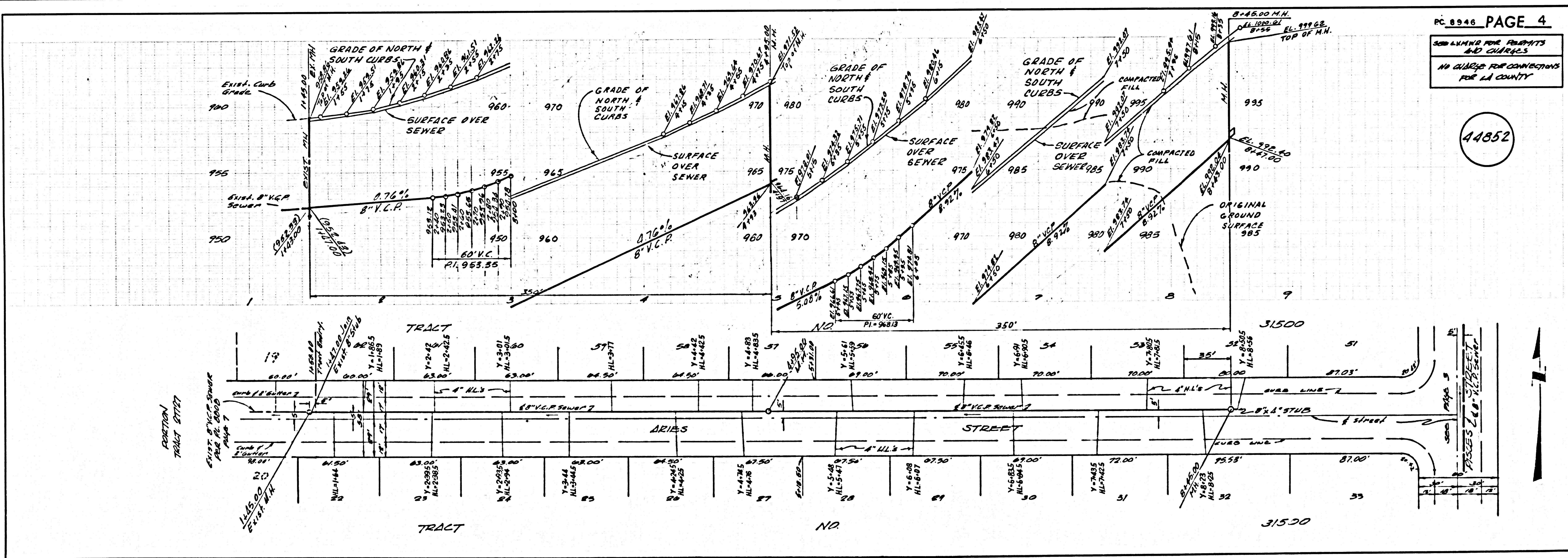
PORTION TENTATIVE TRACT 31501
SANITARY SEWER R/W

PORTION TENTATIVE TRACT NO 85703



SEE PLAN FOR POINTS AND CURVES
NO CHANGE FOR CONNECTIONS FOR LA COUNTY

44852



ADDITIONAL TRACT 31501

