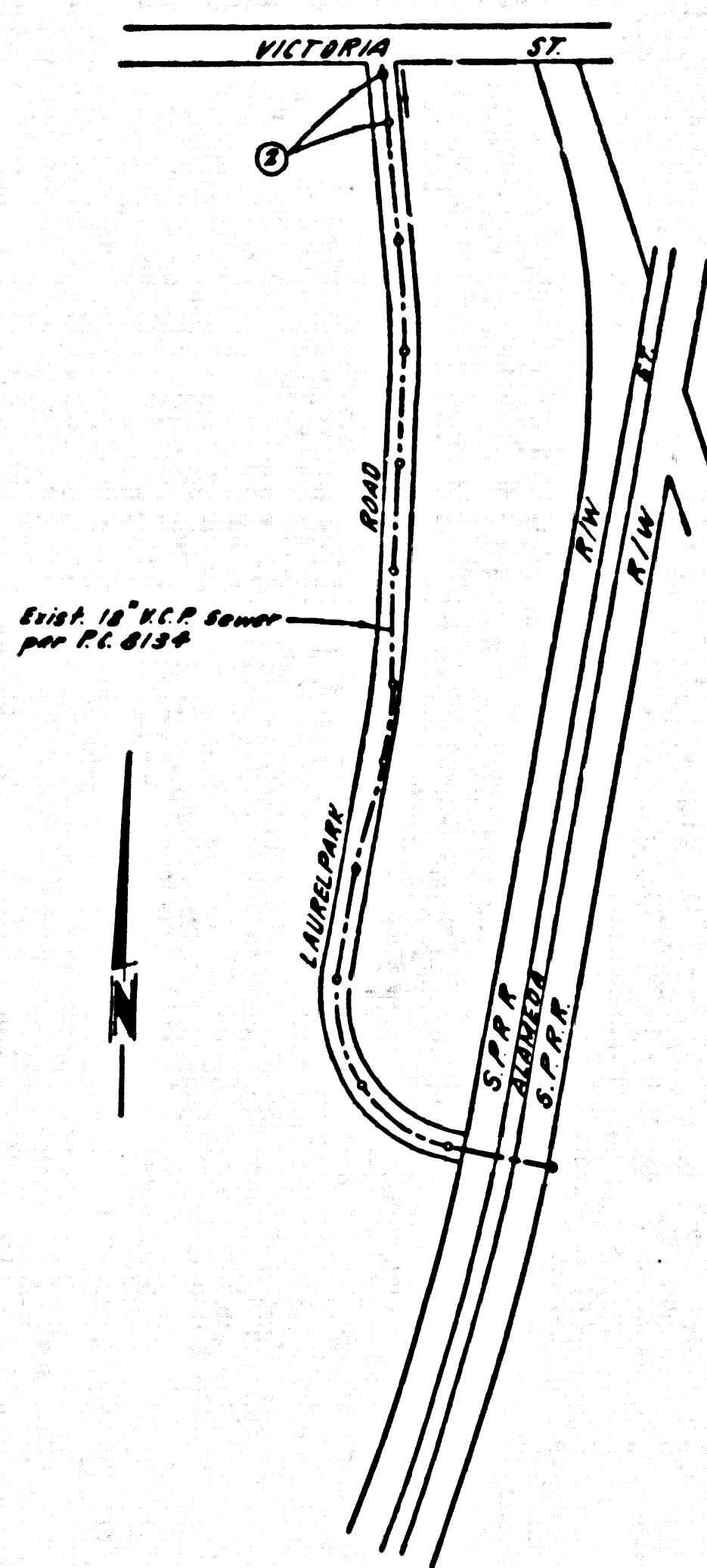


B.M. BY 5787 ELEV. 49.277
 U.S.C. & G.S. Mon. near N. end of S.P.R.R. Co. In
 Vicinity of S.P.R.R. Tracks, 65' S. of
 S. Alameda St. 9 450' S. of S. Inter Alameda
 St. S.P.R.R. Map (1952 1956)
GARDENA QUAD. 19 65



INDEX MAP
 SCALE 1" = 600'

Full compliance with Section 306-1.9.3 of the special provisions will be required for backfill in streets. Certification of backfill compacted and sand equivalent by a qualified, registered testing laboratory shall be provided by the permittee prior to the issuance of a certificate of partial acceptance.

The following latest revised standard plans on file in the office of the County Engineer shall apply in the construction of this project.

Legend	5-1
Minimum public safety requirements	5-2
Brick manhole	5-3
Standard manhole step	5-17
Bedding for sewer pipe	5-21
Cradling and encasement	5-23
Ways on top support	5-24
Allowable trench widths	5-33
Locking manhole frame and cover	5-35
Non-reinforced precast concrete manhole	5-36

No connections for the disposal of industrial wastes shall be made to sewers shown on these drawings without written permission from the Chief Engineer and General Manager of the County Sanitation Districts.

County Sanitation Districts shall be notified prior to the following so that required inspection can be made (Phone numbers - 638-1181)

ACCEPTANCE OF THE PROJECT

DOMINGUEZ BLDG. DIST. NO. 13

- NOTES:
- PROVIDE STAKES ON THE PROPERTY LINE OR PROPERTY LINES PRODUCED AT RIGHT ANGLES TO THE SEWER LINE AT THE CENTER LINE OF EACH MANHOLE.
 - NO IMPROVEMENTS OF THE COUNTY ENGINEER WILL SURVEY OR LAY OUT ANY PORTION OF THE WORK.
 - THE PRIVATE ENGINEER SHALL FURNISH THE COUNTY ENGINEER WITH GRADE SHEETS AND STATIONING FOR ALL HOUSE LATERALS AND 12" V.C.P. BRANCHES AND SHALL PROVIDE STAKES FOR THEM AT THEIR PROPER LOCATIONS WITH STATIONING PLAINLY MARKED. ALL HOUSE LATERALS SHALL BE CONSTRUCTED IN A STRAIGHT ALIGNMENT AT RIGHT ANGLES FROM THE MAIN LINE SEWER EXCEPT AS SHOWN ON THE PLANS. HOUSE LATERALS FROM CHIMNEYS SHALL NOT HAVE AN ANGLE OF LESS THAN 45° WITH THE MAIN LINE SEWER. ANY CHANGE IN ALIGNMENT SHALL BE REQUESTED IN WRITING BY THE PRIVATE ENGINEER.
 - THE PRIVATE ENGINEER SHALL FURNISH THE HOUSE LATERAL DEPTH AT THE PROPERTY LINE BELOW THE TOP OF CURB ELEVATION FOR EACH HOUSE LATERAL ON THE GRADE SHEET.
 - NO REVISIONS SHALL BE MADE IN THESE PLANS WITHOUT THE APPROVAL OF THE COUNTY ENGINEER.
 - THE CONTRACTOR SHALL NOTIFY THE CONSTRUCTION DIVISION BY TELEPHONE, 974-7283, AT LEAST TWENTY-FOUR HOURS BEFORE STARTING ANY WORK UNDER THIS CONTRACT.
 - MANHOLES SHALL BE BRICK SEWER STRUCTURES PER S.S. PRECAST CONCRETE MANHOLES PER 5-26 MAY BE USED AS AN ALTERNATE IN LOCATIONS APPROVED BY THE COUNTY ENGINEER.
 - USE STANDARD MANHOLE FRAMES AND COVERS, 5-25 EXCEPT AS NOTED.
 - MANHOLE TOPS IN UNIMPROVED RIGHTS-OF-WAY TO BE SIX INCHES ABOVE FINISHED GRADE.
 - USE EXTRA STRENGTH PIPE. ALL PIPE IS STANDARD DEPTH EXCEPT AS NOTED.
 - Identical clay pipe joints shall be type "F", or "B" per Standard Spec's Section 208-2.
 - IF A POWER POLE IS WITHIN THREE FEET OF THE SEWER, THE SEWER SHALL BE DISCAVED, PER S.S. CASE 8, TWO FEET ON EACH SIDE FROM THE POINT OF INTERFERENCE.
 - IF DURING THE COURSE OF CONSTRUCTION IT IS DETERMINED THAT THERE IS LESS THAN FOUR FEET OF COVER OVER THE TOP OF A MAIN LINE OR HOUSE LATERAL V.C.P. SEWER WHICH IS NOT SHOWN AT ON THE PLANS, THE PIPE SHALL BE DISCAVED PER S.S. CASE 8 UNLESS OTHERWISE APPROVED BY THE COUNTY ENGINEER.
 - HOUSE LATERALS TO BE CONSTRUCTED WITHIN PROPERTY LINE & FEET BELOW CURB GRADE EXCEPT AS NOTED.
 - RESURFACE ALL TRENCHES WITHIN PAVED AREAS TO MEET L.A. COUNTY ROAD DEPT. OR CALIFORNIA STATE HIGHWAY REQUIREMENTS IN ACCORDANCE WITH SPECIFICATIONS.
 - Remove to be tested for leakage per Section 306-2.27 of the Standard Spec's & Special Provisions, the Standard Specifications.
 - ALL STATE AND LOCAL TRAFFIC SAFETY ORDERS WILL BE STRICTLY ENFORCED, PER SECTION 7-40 & 141.
 - All joints between cast iron pipe and vitrified clay pipe shall be made with a rubber gasket joint, type C or D, (with ducting if necessary) per Standard Specifications, Section 208-2.

NOTICE TO CONTRACTOR

The existence and location of any underground utility pipes or structures shown on these plans are obtained by a search of the available records to the best of my knowledge there are no existing utilities except as shown on these plans. The contractor is required to take due precautionary measures to protect the utility lines shown and any other lines not of record or not shown on these plans.

Arthur H. Cook
 R.C.E. 7709

COLLECT CHARGES AS INDICATED

PROFILE ALIGNMENT AND GRADE OF **P.C. 8947P**
SANITARY SEWERS PAGE 1
 TO BE CONSTRUCTED IN
PARCEL MAP NO. 3005

PRIVATE CONTRACT NO. 8947P

W.S. 26
 1 SHEET OF 2 PAGES
 SCALE: VERT. 1" = 4' HORIZ. 1" = 40'
 DATE: June, 1973
 PREPARED IN THE OFFICES OF
H.M. SCOTT & ASSOCIATES, INC.
Arthur H. Cook
 REG. C.E. NO. 7709

44134

NOTE: Work shall be constructed according to the Standard Specifications for Public Works Construction (1976 Edition with 71-72 Supp. Amendments) and County Engineer Special Provisions for the Construction of Sanitary Sewers dated April 14, 1973, and shall be constructed in accordance with the Standard Specifications of the County Engineer.

GRADES TO WHICH THIS IMPROVEMENT IS TO BE CONSTRUCTED ARE SHOWN ON PLANS AND PROFILE. GRADE POINTS FOR TOP OF CURB, CENTER LINE OF STREETS, OR CENTER LINE OF ALLEYS ARE SHOWN BY CIRCLES ON PROFILES. AT ALL POINTS BETWEEN DESIGNATED POINTS THE GRADE SHALL BE ESTABLISHED SO AS TO CONFORM TO A STRAIGHT LINE DRAWN BETWEEN SAID DESIGNATED POINTS. ELEVATIONS ARE IN FEET ABOVE U.S.C. & G.S. MEAN LEVEL DATUM OF 1929.

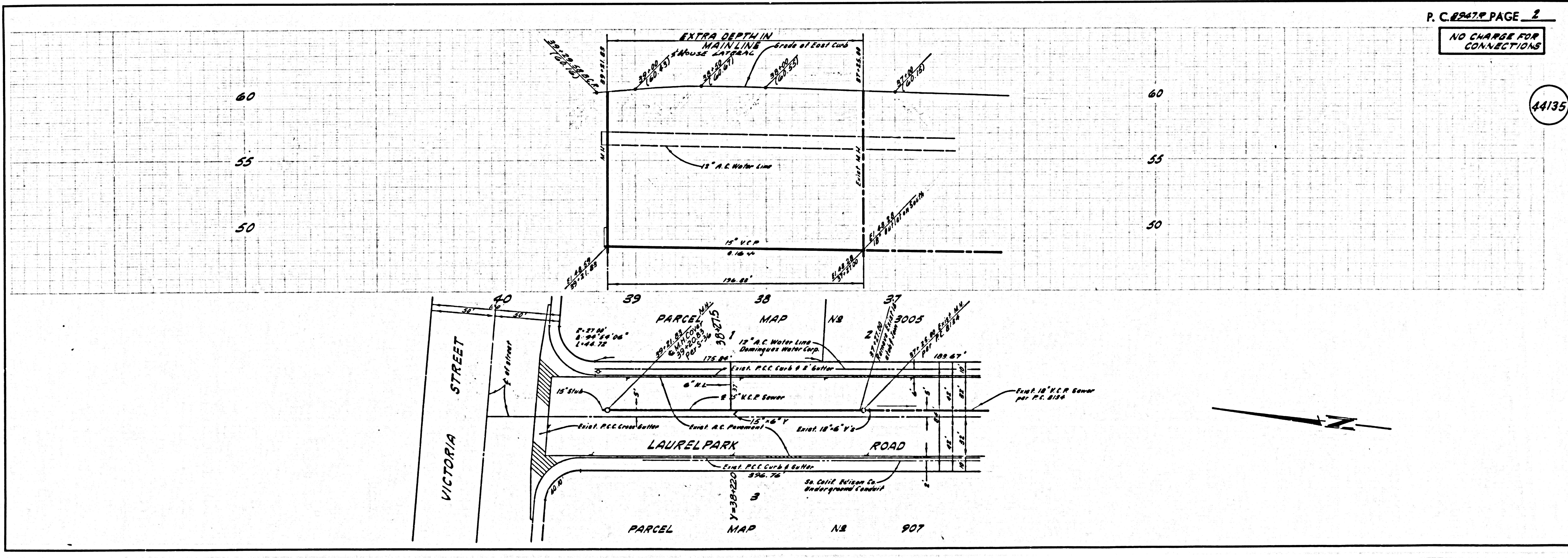
THIS DRAWING AND THE DATA HEREON ARE HEREBY MADE A PART OF THE SPECIFICATIONS.

BEFORE WORK CAN BE STARTED, THE CONTRACTOR MUST OBTAIN A PERMIT TO EXCAVATE IN COUNTY STREETS FROM THE L.A. COUNTY ROAD DEPT., DISTRICT OFFICE NO. 3005, AND PAY A FEE TO THE COUNTY ENGINEER, ROOM 408, 125 SOUTH SPRING STREET, LOS ANGELES, CALIFORNIA. A PERMIT TO EXCAVATE IN COUNTY STREETS FROM THE L.A. COUNTY ROAD DEPT., DISTRICT OFFICE NO. 3005, AND PAY A FEE TO THE COUNTY ENGINEER, ROOM 408, 125 SOUTH SPRING STREET, LOS ANGELES, CALIFORNIA. A PERMIT TO EXCAVATE IN COUNTY STREETS FROM THE L.A. COUNTY ROAD DEPT., DISTRICT OFFICE NO. 3005, AND PAY A FEE TO THE COUNTY ENGINEER, ROOM 408, 125 SOUTH SPRING STREET, LOS ANGELES, CALIFORNIA.

COUNTY OF LOS ANGELES, CALIFORNIA
 Harvey T. Brandt, COUNTY ENGINEER
 J. D. PARKHURST, CHIEF ENGINEER
 CO. SAN. DIST. NO. 13
 APPROVED BY *R.M. M... Regional Engineer* APPROVED BY *J. Post... Office Engineer*

CHECKED BY *Arthur H. Cook* 8-15-73
 REG. C.E. NO. 7709

J.N. 0250.05



P.C. 8947P PAGE 2
 NO CHARGE FOR CONNECTIONS

44135