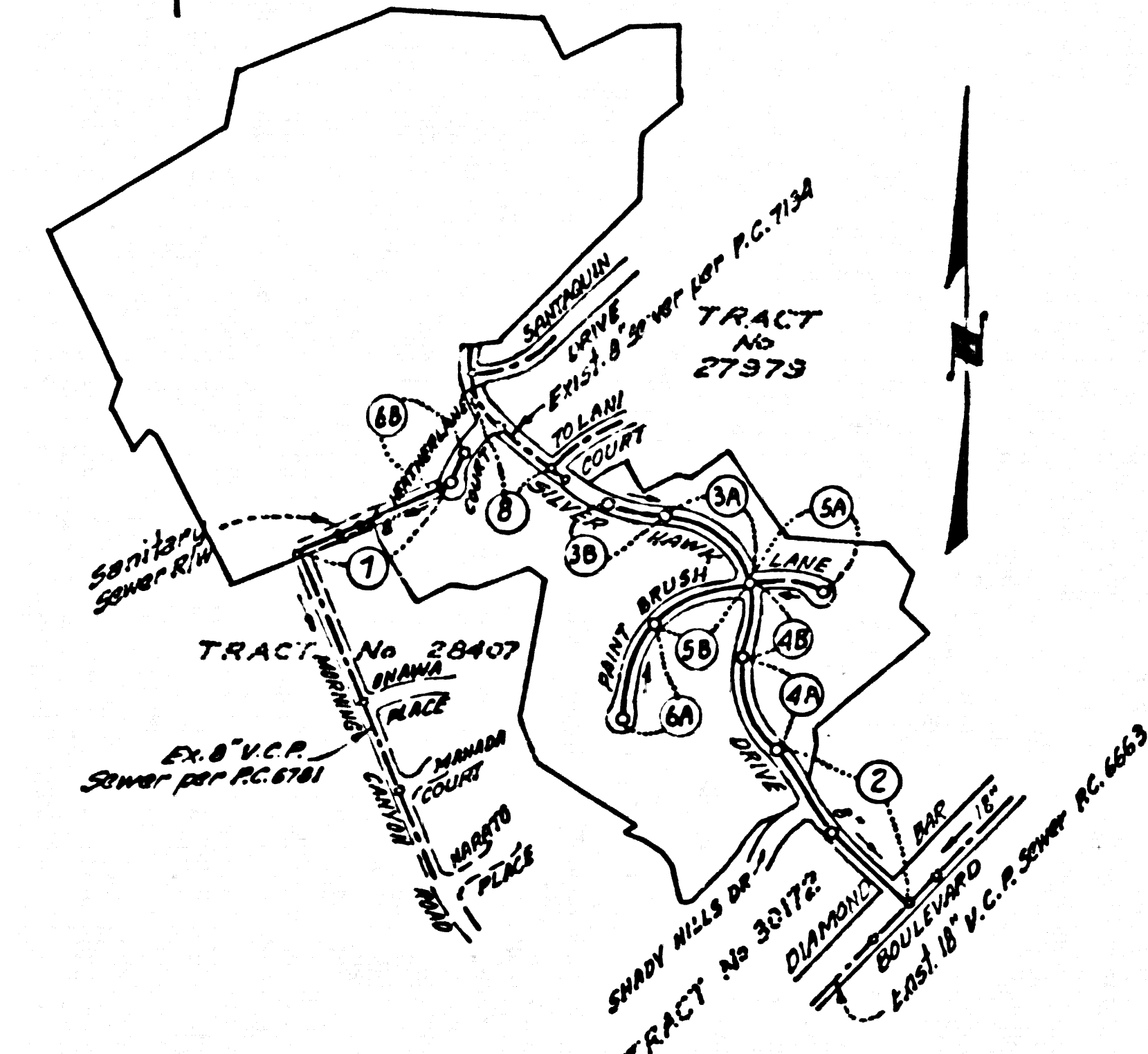


B.M. B.G. 3908 ELEV. 813.521
 L. & T. R.C.F. 8793, 1.5' NORTH B.C.R.,
 53' SOUTH & 50' WEST & INT. DIAMOND
 BAR BLVD. & KIOWA CREST
 OTTERBEIN QUAD. 1972



INDEX MAP
 SCALE: 1"=600'
 P.C. 8948

- THE FOLLOWING LATEST REVISED STANDARD PLANS ON FILE IN THE OFFICE OF THE COUNTY ENGINEER SHALL APPLY IN THE CONSTRUCTION OF THIS PROJECT
- LEGEND
- MIN. PUBLIC SAFETY REQUIREMENTS 5-1
 - BRICK MANHOLE 5-2
 - REINFORCED PRECAST CONCRETE MANHOLE 5-36
 - MANHOLE STEP 5-17
 - BEDDING FOR SEWER PIPE 5-23
 - GRADLING & ENCASEMENT 5-23
 - WYE OR TEE SUPPORT 5-26
 - ALLOWABLE TRENCH WIDTH 5-33
 - LOCKING M.H. FRAME & COVER 5-35

FULL COMPLIANCE WITH SECTION 306-19.3 OF THE SPECIAL PROVISIONS WILL BE REQUIRED FOR BACKFILL IN STREETS. CERTIFICATION OF BACKFILL COMPACTION AND SAND EQUIVALENTS BY A QUALIFIED REGISTERED TESTING LABORATORY SHALL BE PROVIDED BY THE PERMITTEE PRIOR TO THE ISSUANCE OF A CERTIFICATE OF PARTIAL ACCEPTANCE.

DOUBLE SCALE
 SAN DIMAS BLDG. DIST. NO. 10

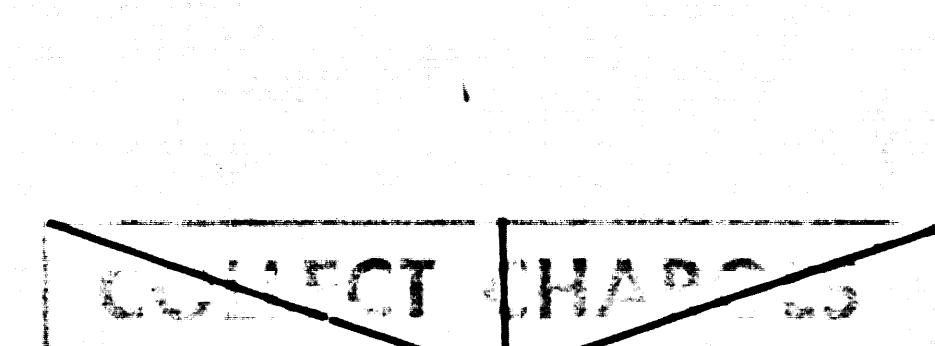
PROFILE ALIGNMENT AND GRADE OF
 SANITARY SEWERS PAGE 1
 CONSTRUCTED IN

TRACT NO. 31151
 PRIVATE CONTRACT NO. 8948

W.S. 39
 8 SHEETS, 8 PAGES
 SCALE: VERT. 1"=6' HORIZ. 1"=40' APRIL, 1973 46,019
 PREPARED IN THE OFFICES OF
 CL. PEARSON & ASSOCIATES
 3925 BURCH STREET
 NEWPORT BEACH, CALIFORNIA, 92660
 BY: Harry E. Johnson C.C. 73
 LARRY E. JOHNSON REG. C. E. NO. 20131
 FOR LEGEND SEE PLAN NO. S-1

- NOTES:
1. PROVIDE STAKES ON THE PROPERTY LINE OR PROPERTY LINES PRODUCED AT RIGHT ANGLES TO THE SEWER LINE AT THE CENTER LINE OF EACH MANHOLE.
 2. NO REPRESENTATIVE OF THE COUNTY ENGINEER WILL SURVEY OR LAY OUT ANY PORTION OF THE WORK.
 3. THE PRIVATE ENGINEER SHALL FURNISH THE COUNTY ENGINEER WITH 60% SHEETS AND STATIONING FOR ALL HOUSE LATERALS AND "Y" BRANCHES AND SHALL PROVIDE STAKES FOR THEM AT THEIR PROPER LOCATIONS WITH STATIONING PLAINLY MARKED.
 4. ALL HOUSE LATERALS SHALL BE CONSTRUCTED IN A STRAIGHT ALIGNMENT AT RIGHT ANGLES FROM THE MAIN LINE SEWER EXCEPT AS SHOWN ON THE PLANS. HOUSE LATERALS FROM CHIMNEYS SHALL NOT HAVE AN ANGLE OF LETS THAN 45° WITH THE MAIN LINE SEWER. ANY CHANGE IN ALIGNMENT SHALL BE REQUESTED IN WRITING BY THE PRIVATE ENGINEER.
 5. THE PRIVATE ENGINEER SHALL FURNISH THE HOUSE LATERAL DEPTH AT THE PROPERTY LINE BELOW THE TOP OF CURB ELEVATION FOR EACH HOUSE LATERAL ON THE "GRADE SHEET".
 6. NO REVISIONS SHALL BE MADE IN THESE PLANS WITHOUT THE APPROVAL OF THE COUNTY ENGINEER.
 7. THE CONTRACTOR SHALL NOTIFY THE CONSTRUCTION DIVISION BY TELEPHONE, 57-47283, AT LEAST TWENTY-FOUR HOURS BEFORE STARTING ANY WORK UNDER THIS CONTRACT.
 8. MANHOLES SHALL BE BRICK SEWER STRUCTURES PER S-3, PRECAST CONCRETE MANHOLES PER S-36, EXCEPT AS NOTED. MANHOLE DEPTH SHALL BE AS SHOWN ON THE PLANS.
 9. "Y" OR "T" BRANCHES MAY BE USED FOR CONNECTIONS TO MAIN LINE SEWERS, EXCEPT AS NOTED.
 10. MANHOLE TOPS IN UNIMPROVED RIGHTS-OF-WAY TO BE SIX INCHES ABOVE FINISHED GRADE.
 11. USE EXTRA STRENGTH PIPE. ALL PIPE IS STANDARD DEPTH EXCEPT AS NOTED.
 12. VITRIFIED CLAY PIPE JOINTS SHALL BE TYPE "D" OR "E" PER STD. SPEC. 208-2.
 13. IF A POWER POLE IS WITHIN THREE FEET OF THE SEWER, THE SEWER SHALL BE ENCASED, PER S-29, TWO FEET ON EACH SIDE FROM THE POINT OF INTERFERENCE.
 14. IF DURING THE COURSE OF CONSTRUCTION IT IS DETERMINED THAT THERE IS LESS THAN FOUR FEET OF COVER OVER THE TOP OF A MAIN LINE OR HOUSE LATERAL V.C.P. SEWER WHICH IS NOT INDICATED ON THE PLANS, THE PIPE SHALL BE ENCASED PER S-23, UNLESS OTHERWISE APPROVED BY THE COUNTY ENGINEER.
 15. HOUSE LATERALS TO BE CONSTRUCTED WITH INVERTS AT PROPERTY LINE & FEET BELOW CURB GRADE EXCEPT AS NOTED.
 16. RESURFACE ALL TRENCHES WITHIN PAVED AREAS TO MEET L.A. COUNTY ROAD DEPT. OR CALIFORNIA STATE HIGHWAY REQUIREMENTS IN ACCORDANCE WITH PERMITS.
 17. SEWERS TO BE TESTED FOR LEAKAGE PER SECTION 306-2-3-1 STD. SPEC.
 18. REFERTO SECTION 40-4-1 OF THE STANDARD SPEC'S REGARDING SAFETY ORDERS
 19. ALL JOINTS BETWEEN CAST IRON PIPES AND VITRIFIED CLAY PIPES SHALL BE MADE WITH A RUBBER GLEVIC JOINT, TYPE "C" OR "D" WITH BUSHING IF NECESSARY, PER STD. SPEC. 208-2.

CONNECTIONS FOR THE DISPOSAL OF INDUSTRIAL WASTES SHALL BE MADE BY THE CONTRACTOR AT HIS OWN DISCRETION WITHOUT WRITTEN PERMISSION FROM THE CHIEF ENGINEER AND GENERAL MANAGER OF THE COUNTY SANITATION DISTRICTS.



NOTICE TO CONTRACTOR
 The existence and location of any underground utility pipes or structures shown on these plans are obtained by a search of the available records. To the best of my knowledge there are no existing utilities except as shown on these plans. The contractor is required to take due precautionary measures to protect the utility lines shown and any other lines not of record or not shown on these plans.
 Harry E. Johnson
 REG. C.E. NO. 20131

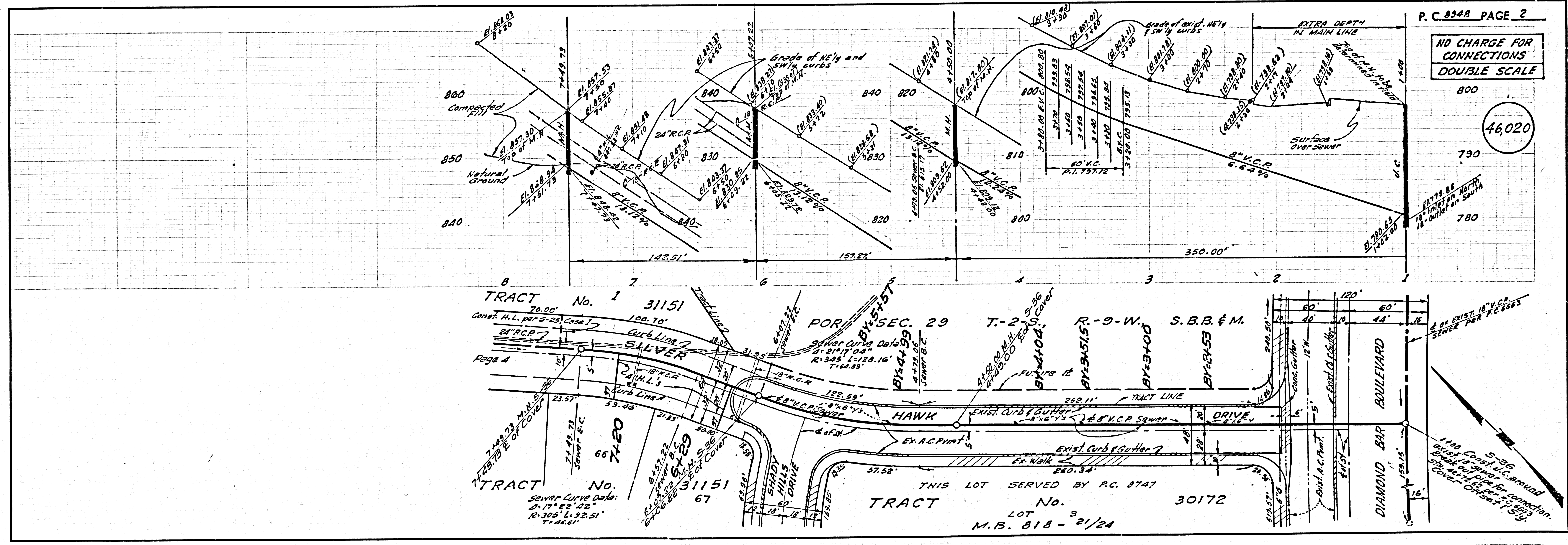
REVISIONS	APPROVED	DATE
REMOVED 4 LOTS AND CORRESPONDING SEWER LATERALS. 4/7/74	RE: [Signature] Thomas	3 May 74

NOTE:
 GRADES TO WHICH THIS IMPROVEMENT IS TO BE CONSTRUCTED ARE SHOWN ON PLANS AND PROFILES. GRADE POINTS FOR TOP OF CURBS, CENTER LINE OF STREETS, OR CENTER LINE OF ALLEYS ARE SHOWN BY CIRCLES ON PROFILES. AT ALL POINTS BETWEEN DESIGNATED POINTS THE GRADE SHALL BE ESTABLISHED SO AS TO CONFORM TO A STRAIGHT LINE DRAWN BETWEEN SAID DESIGNATED POINTS. ELEVATIONS ARE IN FEET ABOVE U.S.C. & G.S. SEA LEVEL DATUM OF 1929.
 WORK SHALL BE CONSTRUCTED TO THE STANDARD SPECIFICATIONS FOR PUBLIC WORKS CONSTRUCTION (1970 EDITION) WITH THE 1972 SUPPLEMENT. 60% CONSTRUCTION SHALL BE COMPLETED BY THE DATE OF THE ISSUANCE OF THE PERMIT. SANITARY SEWERS DATED APRIL 1972 AND SHALL BE PROSECUTED ONLY IN THE PRESENCE OF THE COUNTY ENGINEER. BEFORE WORK CAN BE STARTED, THE CONTRACTOR MUST OBTAIN A PERMIT TO EXCAVATE FROM THE L.A. COUNTY ROAD DEPT., DISTRICT OFFICE NO. 10, 120 SOUTH SPRING STREET, LOS ANGELES, CALIFORNIA. REGIONAL OFFICE, SUFFICIENT TO COVER THE COST OF CONSTRUCTION INSPECTION AND RECORD PLANS.
 APPROVAL OF THIS PLAN BY THE COUNTY OF LOS ANGELES DOES NOT CONSTITUTE A REPRESENTATION AS TO THE ACCURACY OF THE LOCATION OF OR THE EXISTENCE OR NON-EXISTENCE OF ANY UNDERGROUND UTILITY PIPE, OR STRUCTURE WITHIN THE LIMITS OF THIS PROJECT. THIS NOTE APPLIES TO ALL PAGES.
 IF WORK IS TO BE DONE IN A STATE HIGHWAY, A PERMIT MUST BE OBTAINED FROM THE STATE OF CALIFORNIA, DIVISION OF HIGHWAYS, 120 SOUTH SPRING STREET, LOS ANGELES, CALIFORNIA.

COUNTY OF LOS ANGELES, CALIFORNIA
 HARVEY T. BRADOT, COUNTY ENGINEER
 J. D. PARKHURST, CHIEF ENGINEER
 CO. SAN. DIST. NO. 10

APPROVED: [Signature]
 REGIONAL ENGINEER
 CHECKED: [Signature]
 REG. C.E. NO. 12152

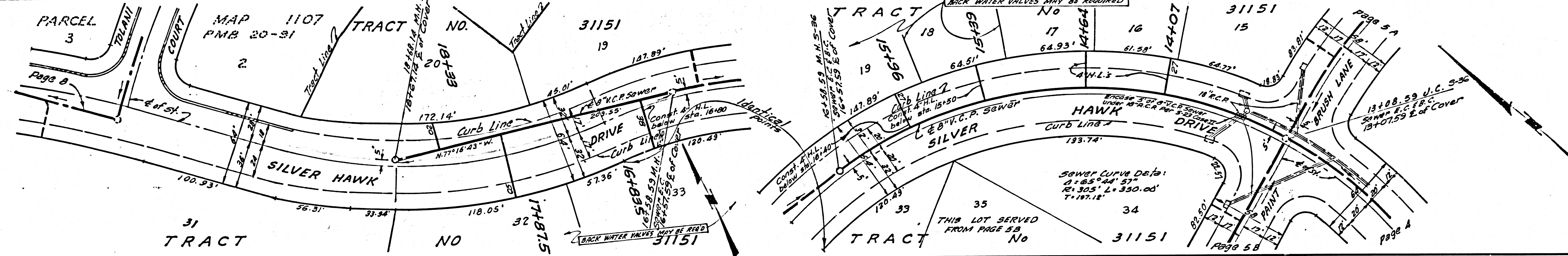
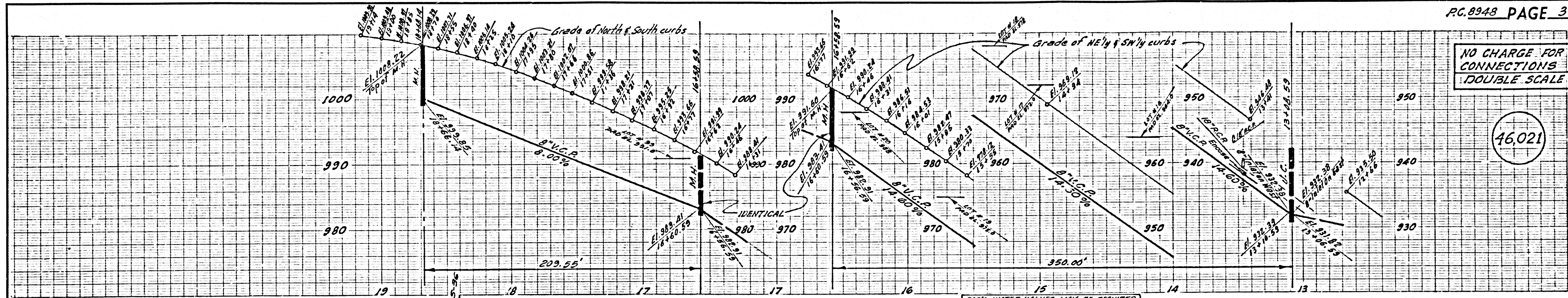
SAN DIMAS BLDG. DIST. 10
 J. N. 0250.02



P. C. 8948 PAGE 2
 NO CHARGE FOR CONNECTIONS
 DOUBLE SCALE
 46,020

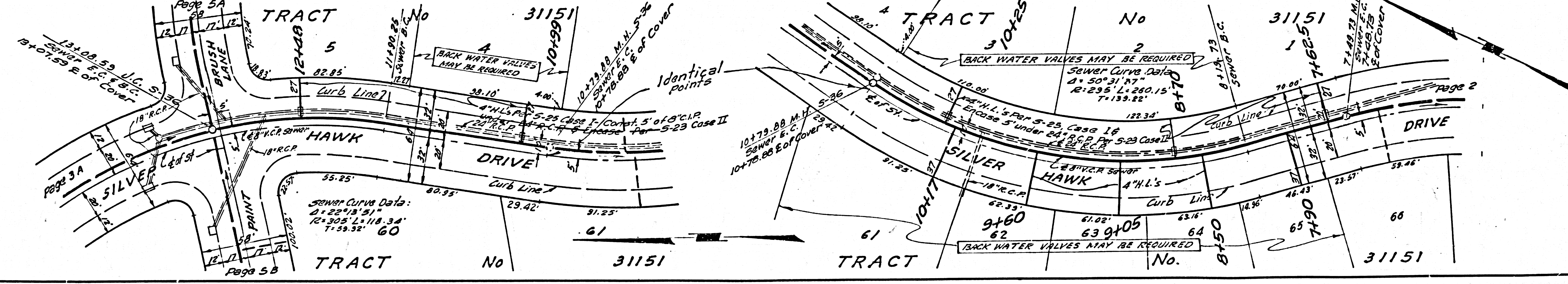
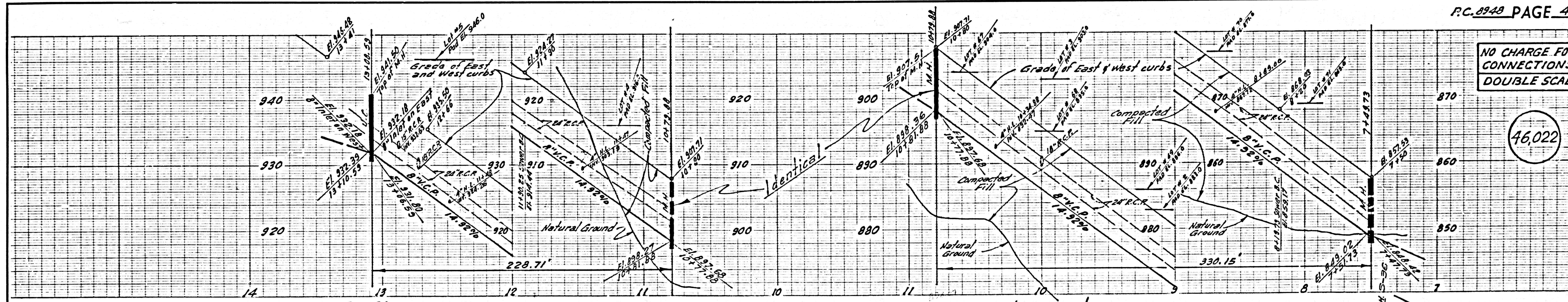
NO CHARGE FOR CONNECTIONS
DOUBLE SCALE

46,021



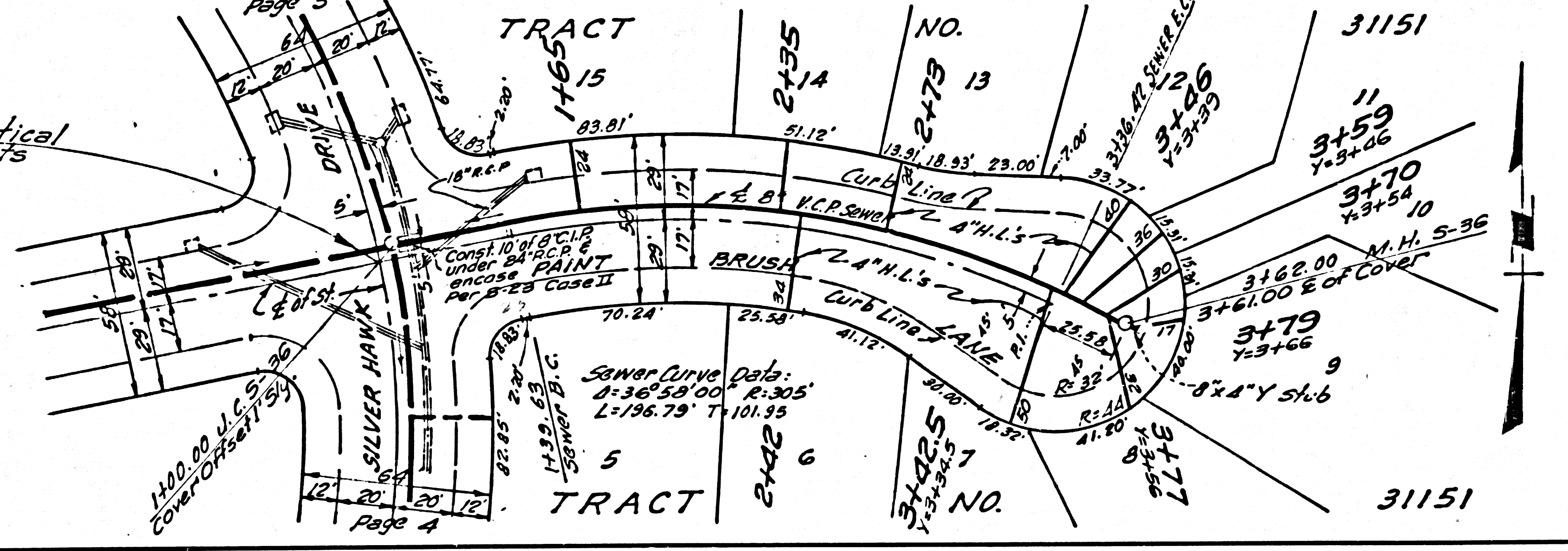
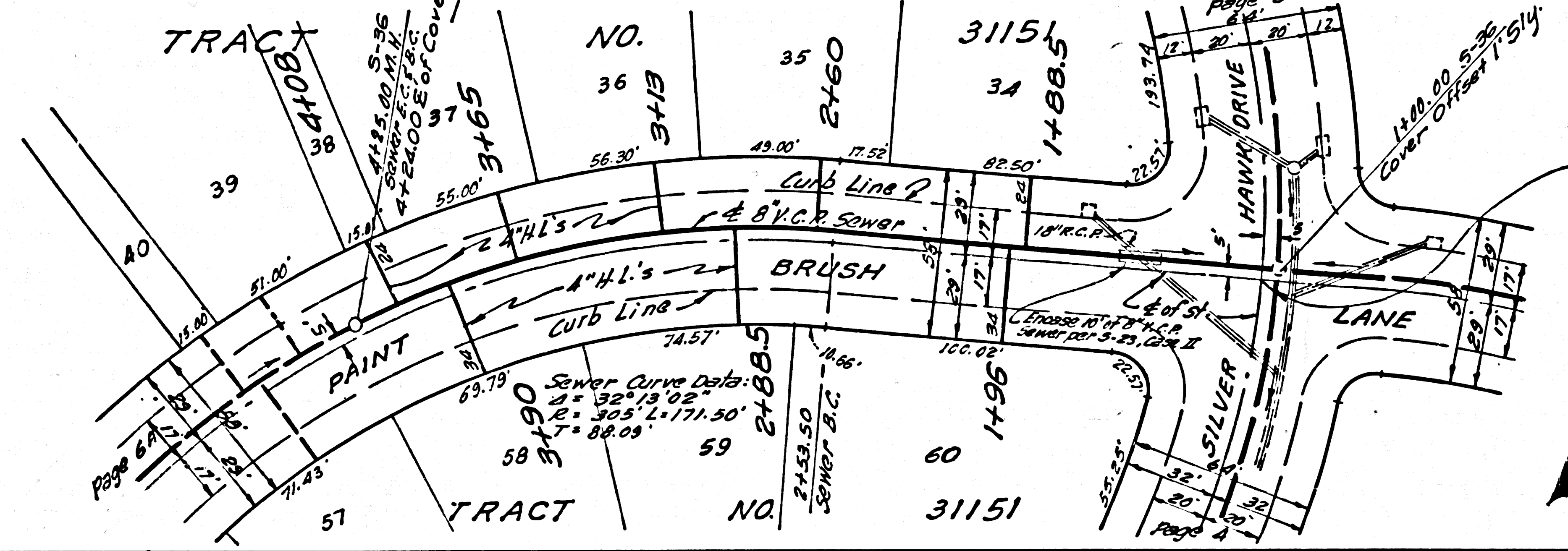
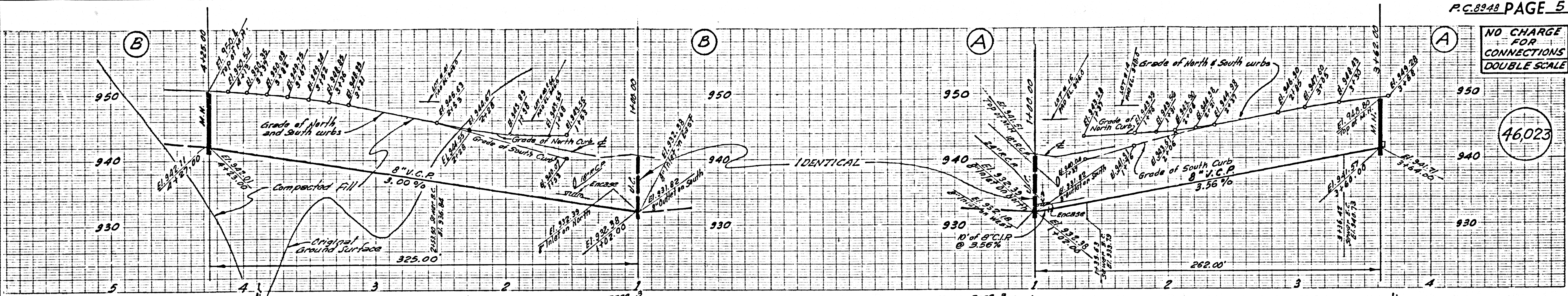
NO CHARGE FOR CONNECTIONS
DOUBLE SCALE

46,022



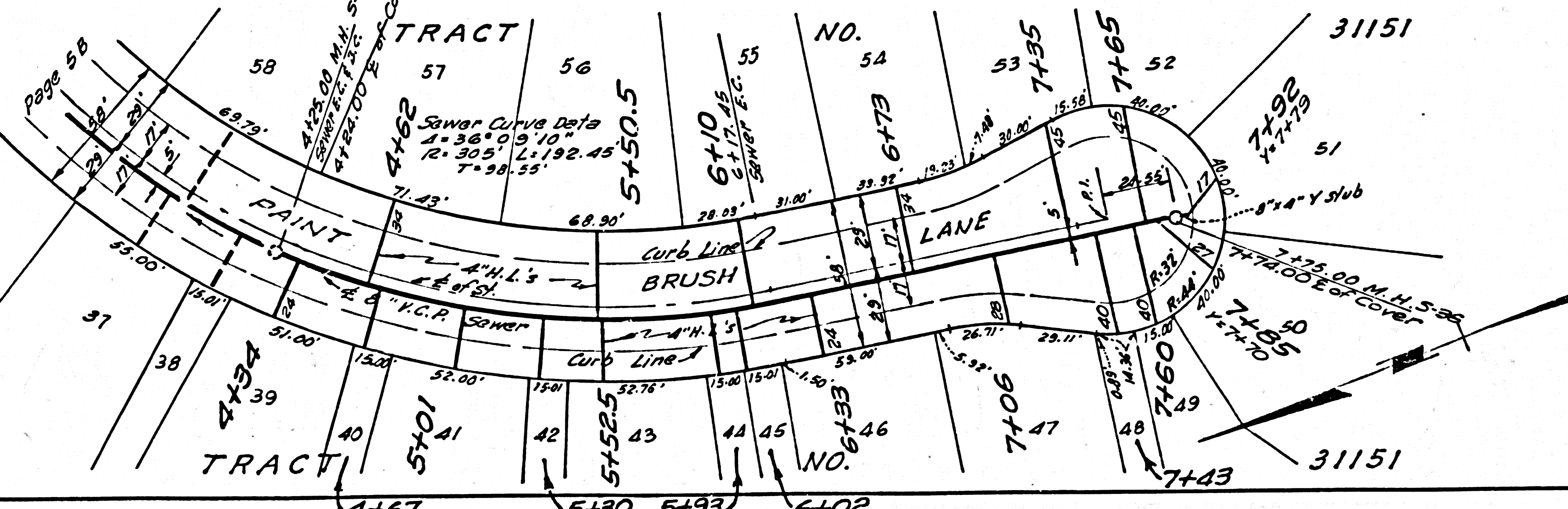
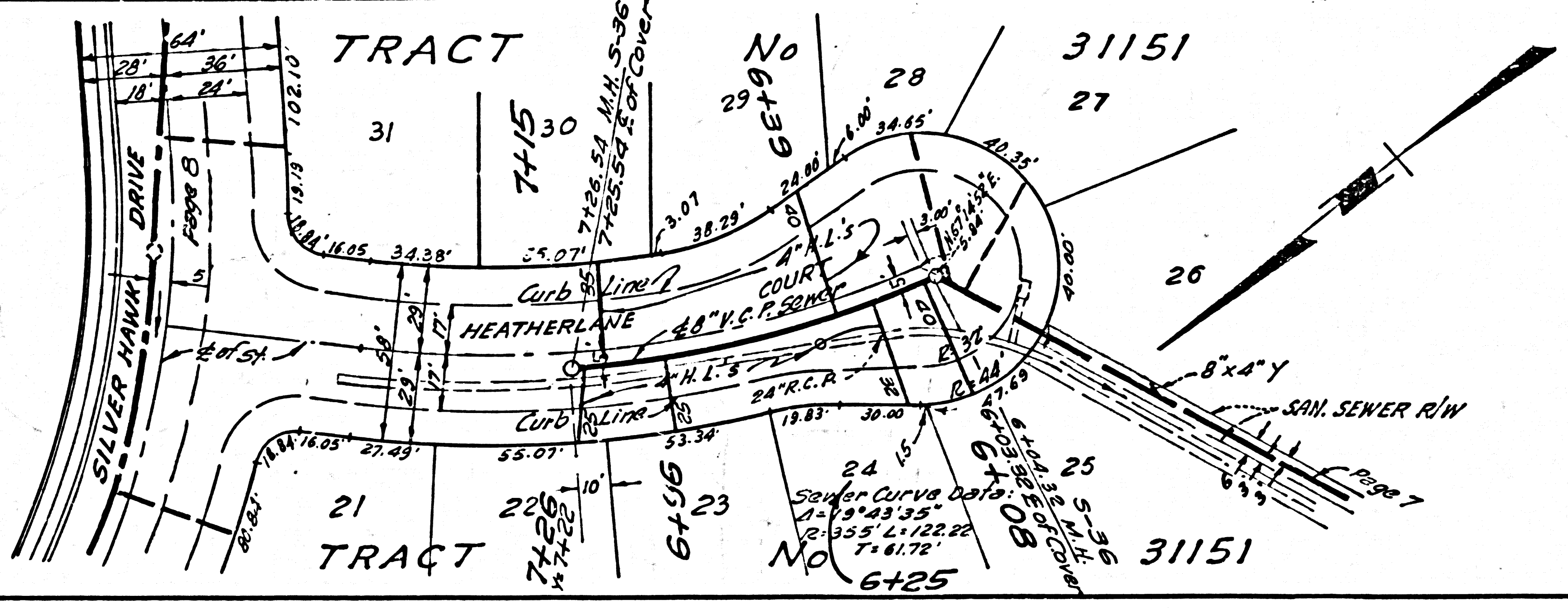
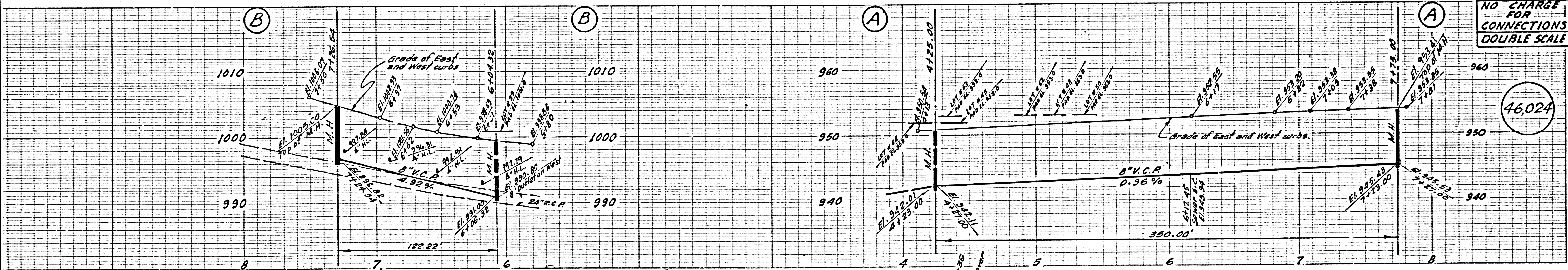
NO CHARGE FOR CONNECTIONS DOUBLE SCALE

46,023



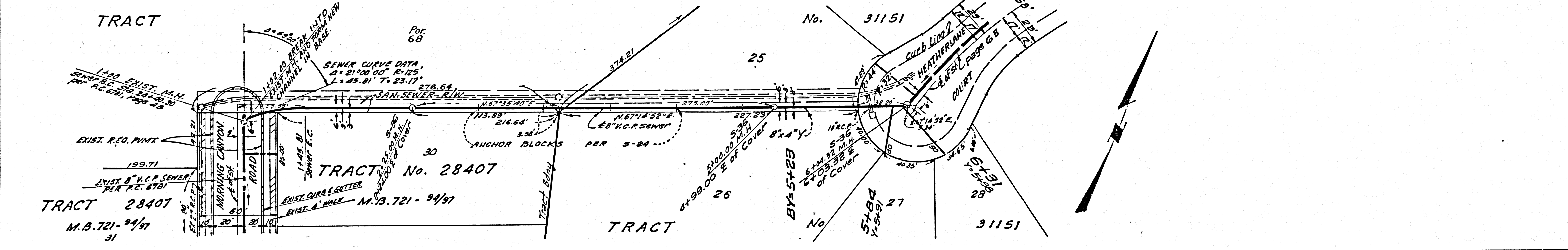
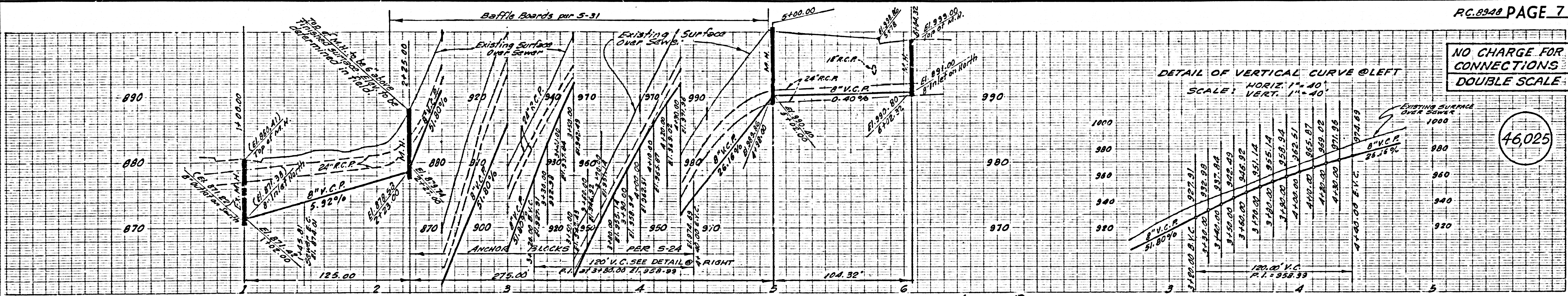
NO CHARGE FOR CONNECTIONS DOUBLE SCALE

46,024



NO CHARGE FOR CONNECTIONS
DOUBLE SCALE

46,025



NO CHARGE FOR CONNECTIONS
DOUBLE SCALE

46,026

