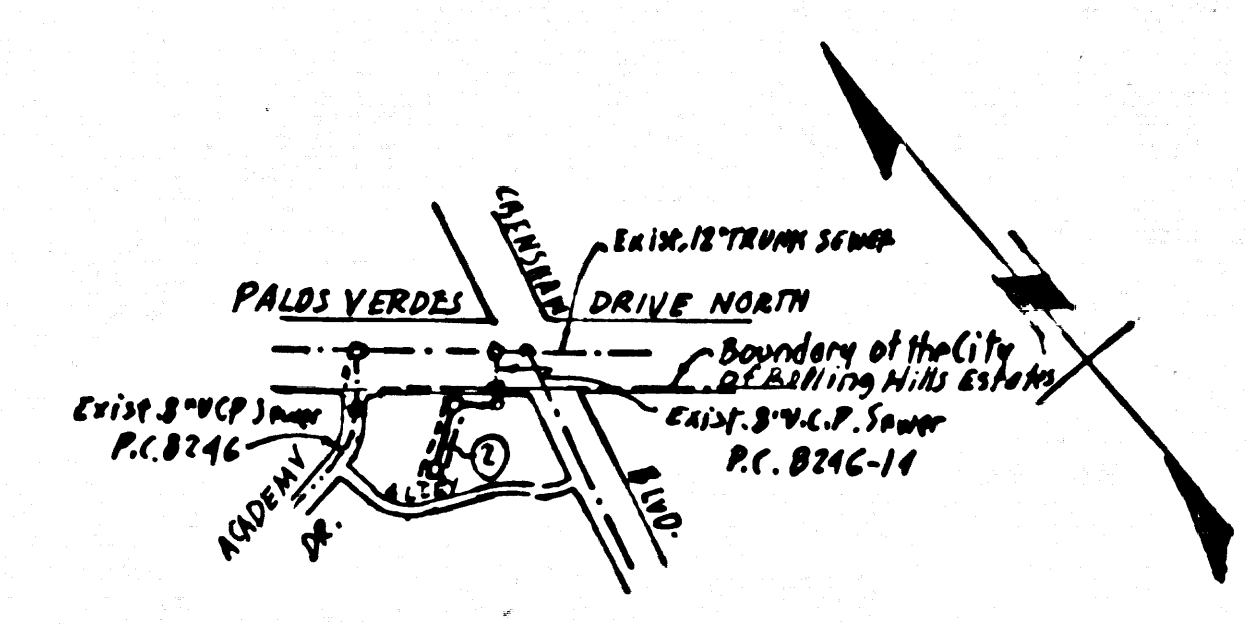


B.M. BY-4857 ELEV. 421.883
 CO. SURVEYOR'S BRASS CAP FLUSH
 IN CONC. 100'S N.O. OF E. PALOS
 VERDES DR., 49'± EAST OF E. CRENSHAW BLVD.,
 PALOS VERDES QUAD. 1972 AD.

NOTES:

- THE FOLLOWING LATEST REVISED STD. PLANS ON FILE IN THE OFFICE OF THE COUNTY ENGINEER SHALL APPLY IN THE CONSTRUCTION OF THIS PROJECT:

LEGEND	NO.
MINIMUM PUBLIC SAFETY REQUIREMENTS	S-1
BRICK MANHOLE	S-3
STANDARD MANHOLE STEP	S-17
BEDDING FOR SEWER PIPE	S-21
CRADLING AND ENCASEMENT	S-23
WYE OR TEE SUPPORT	S-26
ALLOWABLE TRENCH WIDTH	S-33
LOCKING MANHOLE FRAME & COVER	S-35
NON-REINFORCED PRECAST CONCRETE MANHOLE	S-36
SPECIAL SUPPORT AND PROTECTION	S-22
DROP MANHOLE	S-4



INDEX MAP
 SCALE: 1"=600'
 P.C. NO. 8951
 TRACT NO. 30478

No connections for the disposal of industrial wastes shall be made to sewers shown on these drawings without written permission from the Chief Engineer and General Manager of the County Sanitation Districts.

County Sanitation Districts shall be notified prior to the following so that required inspection can be made (Pages 337-1025 - 638-1181)

ACCEPTANCE OF THE PROJECT

LOMITA BLDG. DIST. NO. 12

PROFILE ALIGNMENT AND GRADE OF
SANITARY SEWERS PAGE 1
 TO BE CONSTRUCTED IN

TRACT NO. 30478
PRIVATE CONTRACT NO. 8951

W.S. 27
 1 SHEET 2 PAGES
 SCALE: VERT. 1"=4' HORIZ. 1"=40' MAY, 1973
 PREPARED IN THE OFFICES OF
CONSOLIDATED ENGINEERING CO.
 8815 W. OLYMPIC BLVD.
 BEVERLY HILLS, CALIF. 90211
 BY: *Emilio C. ...*
 REG. C.E. NO. 12312

- NOTES:
- PROVIDE STAKES ON THE PROPERTY LINE OR PROPERTY LINES PRODUCED AT RIGHT ANGLES TO THE SEWER LINE AT THE CENTER LINE OF EACH MANHOLE.
 - NO REPRESENTATIVE OF THE COUNTY ENGINEER WILL SURVEY OR LAY OUT ANY PORTION OF THE WORK.
 - THE PRIVATE ENGINEER SHALL FURNISH THE COUNTY ENGINEER WITH CLEAR SHEETS AND STATIONING FOR ALL HOUSE LATERALS AND "Y" BRANCHES AND SHALL PROVIDE STAKES FOR THEM AT THEIR PROPER LOCATIONS WITH STATIONING PLAINLY MARKED. ALL HOUSE LATERALS SHALL BE CONSTRUCTED IN A STRAIGHT ALIGNMENT AT RIGHT ANGLES FROM THE MAIN LINE SEWER EXCEPT AS SHOWN ON THE PLANS. HOUSE LATERALS FROM CHIMNEYS SHALL NOT HAVE AN ANGLE OF LESS THAN 45° WITH THE MAIN LINE SEWER. ANY CHANGE IN ALIGNMENT SHALL BE REQUESTED IN WRITING BY THE PRIVATE ENGINEER.
 - THE PRIVATE ENGINEER SHALL FURNISH THE HOUSE LATERAL DEPTH AT THE PROPERTY LINE BELOW THE TOP OF CURB ELEVATION FOR EACH HOUSE LATERAL ON THE GRADE SHEET.
 - NO REVISIONS SHALL BE MADE IN THESE PLANS WITHOUT THE APPROVAL OF THE COUNTY ENGINEER.
 - THE CONTRACTOR SHALL NOTIFY THE CONSTRUCTION DIVISION BY TELEPHONE, 974 7283, EXT. 8181, AT LEAST TWENTY-FOUR HOURS BEFORE STARTING ANY WORK UNDER THIS CONTRACT.
 - ALL STRUCTURES SHALL EITHER BE BRICK MANHOLES PER S-3 OR PRECAST CONCRETE MANHOLES PER S-3C, EXCEPT AS NOTED.
 - USE STANDARD MANHOLE FRAMES AND COVERS, S-18, EXCEPT AS NOTED.
 - MANHOLE TOPS IN UNIMPROVED RIGHTS-OF-WAY TO BE SIX INCHES ABOVE FINISHED GRADE.
 - USE STEEL STRUTTING AND 100# RING-AND-RIBBON-AND-RING-AND-RIBBON.
 - V.C.P. POINTS SHALL BE TYPED "P", "E" OR "A" PER STD. SPEC., SECTION 208-2.
 - IF A POWER POLE IS WITHIN THREE FEET OF THE SEWER, THE SEWER SHALL BE ENCASED, PER S-23, TWO FEET ON EACH SIDE FROM THE POINT OF INTERFERENCE.
 - IF DURING THE COURSE OF CONSTRUCTION IT IS DETERMINED THAT THERE IS LESS THAN FOUR FEET OF COVER OVER THE TOP OF A MAIN LINE OR HOUSE LATERAL V.C.P. SEWER WHICH IS NOT INDICATED ON THE PLANS, THE PIPE SHALL BE ENCASED PER S-23, UNLESS OTHERWISE APPROVED BY THE COUNTY ENGINEER.
 - HOUSE LATERALS TO BE CONSTRUCTED WITH INVERTS AT PROPERTY LINE & FEET BELOW CURB GRADE EXCEPT AS NOTED.
 - RESURFACE ALL TRENCHES WITHIN PAVED AREAS TO MEET L.A. COUNTY ROAD DEPT. OR CALIFORNIA STATE HIGHWAY REQUIREMENTS IN ACCORDANCE WITH PERMITS.
 - SEWER TO BE TESTED FOR LEAKAGE PER SEC. 306-2, 87 OF THE STD. SPEC. & SPECIAL PROVISIONS.
 - REFER TO SEC. 7-10, 9.1 OF THE STD. SPEC. REGARDING SAFETY SIGNALS.
 - WYS OR TEE BRANCHES MAY BE USED FOR CONNECTIONS TO MAINLINE SEWERS.
 - FULL COMPLIANCE WITH SEC. 300-1, 9.2, 9.3 OF THE SPECIAL PROVISIONS WILL BE REQUIRED FOR BACKFILL. AS NOTIFICATION OF BACKFILL COMPLETION AND SAND EQUIVALENT BY A QUALIFIED TESTING LABORATORY SHALL BE PROVIDED BY THE PERMITTEE PRIOR TO THE ISSUANCE OF ACCEPTANCE OF PARTIAL ACCEPTANCE.

NOTICE TO CONTRACTOR

The existence and location of any underground utility pipes or structures shown on these plans are obtained by a search of the available records to the best of my knowledge. There are no existing utilities except as shown on these plans. The contractor is required to take due precautionary measures to protect the utility lines shown and any other lines not of record or not shown on these plans.

Emilio C. ...
 REG. C.E. NO. 12312

FOR LEGEND SEE PLAN NO. S-1

NOTE: THIS DRAWING AND THE DATA HEREON ARE HEREBY MADE A PART OF THE SPECIFICATIONS. GRADES TO WHICH THE IMPROVEMENT IS TO BE CONSTRUCTED ARE SHOWN ON PLANS AND PROFILES. GRADE POINTS FOR TOP OF CURBS, CENTER LINE OF STREETS, OR CENTER LINE OF ALLEYS ARE SHOWN BY CIRCLES ON PROFILES. AT ALL POINTS BETWEEN DESIGNATED POINTS THE GRADE SHALL BE ESTABLISHED SO AS TO CONFORM TO A STRAIGHT LINE DRAWN BETWEEN SAID DESIGNATED POINTS. ELEVATIONS ARE IN FEET ABOVE U.S.C. & G.S. SEA LEVEL DATUM OF 1929.

NOTE: SHALL BE CONSTRUCTED ACCORDING TO THE STD. SPEC. FOR PUBLIC WORKS CONSTRUCTION. (LISTED SECTION WITH THE SPECIFICATIONS) AND COUNTY E.A.S.C. SPECIAL PROVISIONS FOR THE L.A. COUNTY ROAD DEPT., DISTRICT OFFICE NO. ... AND PAY A FEE TO THE COUNTY ENGINEER, 5150 E. IMPERIAL HWY., BEVERLY HILLS, CALIF. 90211. BEFORE WORK CAN BE STARTED, THE CONTRACTOR MUST OBTAIN A PERMIT TO EXCAVATE IN COUNTY STREETS FROM THE L.A. COUNTY ROAD DEPT., DISTRICT OFFICE NO. ... AND PAY A FEE TO THE COUNTY ENGINEER, 5150 E. IMPERIAL HWY., BEVERLY HILLS, CALIF. 90211. SPECIAL PROVISIONS OF PALOS VERDES-CRENSHAW VALLEY ... ORIGINAL OFFICE SURVEY TO COVER THE COST OF CONSTRUCTION INSPECTION AND RECORD PLANS.

NOTICE: CALIFORNIA OR PALOS VERDES-CRENSHAW VALLEY ... ORIGINAL OFFICE SURVEY TO COVER THE COST OF CONSTRUCTION INSPECTION AND RECORD PLANS.

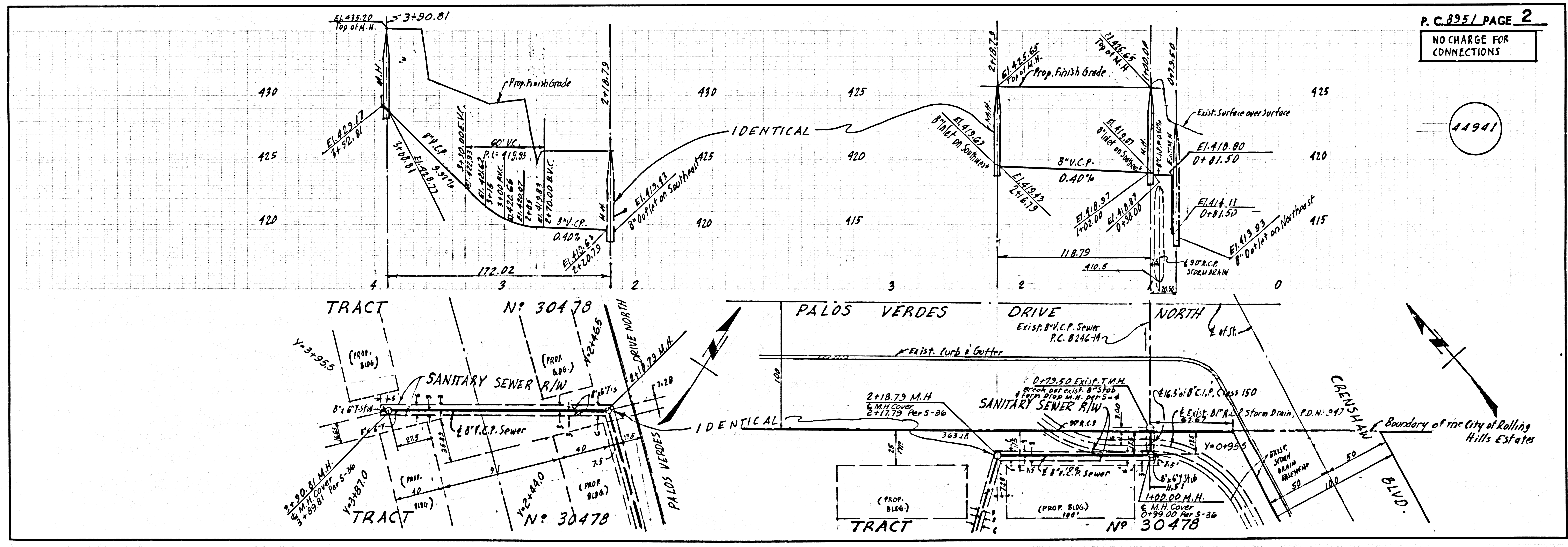
NOTICE: THIS PLAN BY THE COUNTY OF LOS ANGELES DOES NOT CONSTITUTE A REPRESENTATION AS TO THE ACCURACY OF THE LOCATION OR OF THE EXISTENCE OR NON-EXISTENCE OF ANY UNDERGROUND UTILITY PIPE, OR STRUCTURE WITHIN THE LIMITS OF THIS PROJECT. THIS NOTE APPLIES TO ALL PAGES.

IF WORK IS TO BE DONE IN A STATE HIGHWAY, A PERMIT MUST BE OBTAINED FROM THE STATE OF CALIFORNIA, DIVISION OF HIGHWAYS, 126 SOUTH SPRING STREET, LOS ANGELES, CALIFORNIA.

COUNTY OF LOS ANGELES, CALIFORNIA
 HARVEY T. BRANDT, COUNTY ENGINEER J. D. PARKHURST, CHIEF ENGINEER
 CO. SANIT. DIST. 12
 APPROVED BY: *Richard M. ...* APPROVED BY: *J. ...*
 REGIONAL ENGINEER OFFICE ENGINEER

CHECKED BY: *W. ...* 8/13/73
 REG. C.E. NO. 12312

J.N. 0250.02



P.C. 8951 PAGE 2
 NO CHARGE FOR CONNECTIONS

11941