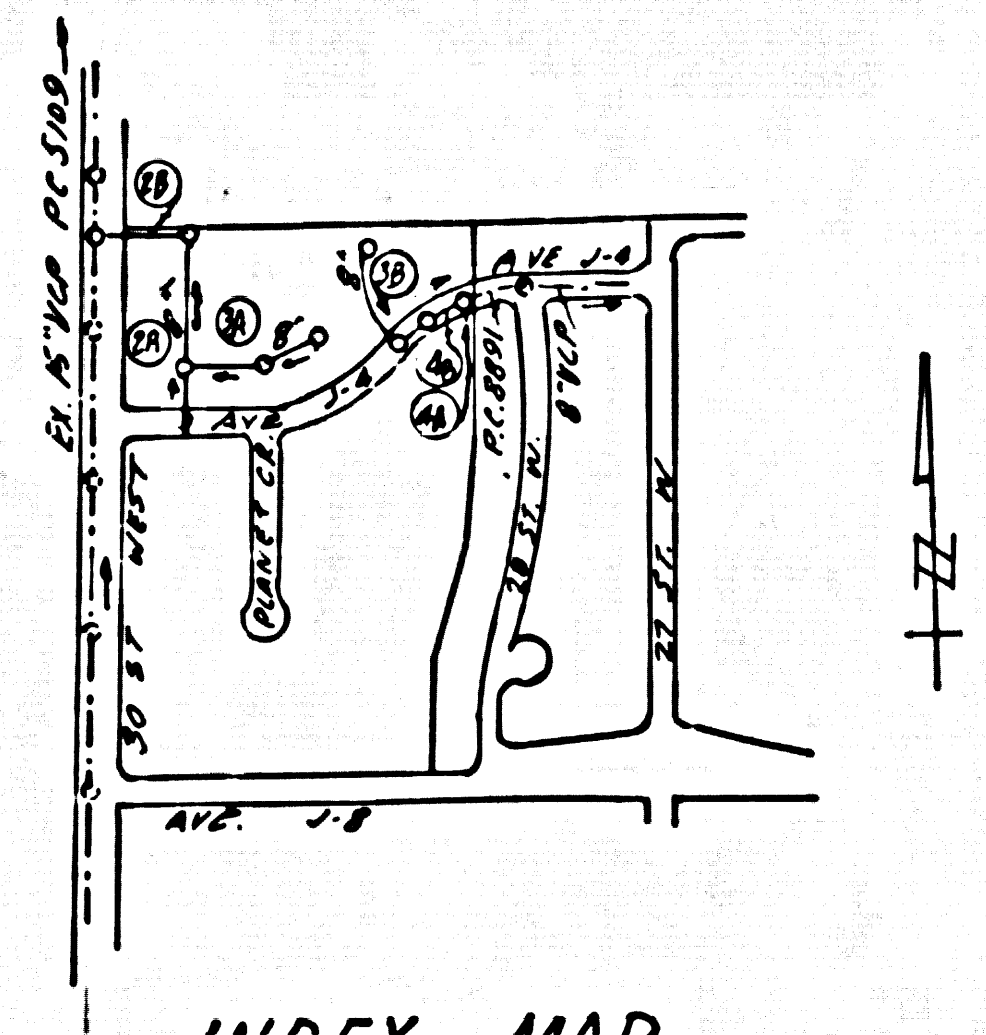


B.M. BL-729 ELEV. 2340.206  
 ROAD MARK IN WELL 8" ON ON S.E.  
 COR. 30TH STREET WEST & AVE. J-B  
 100' SOUTH 50' EAST & INTERSECTION  
 LANCASTER QUAD. 1922

Contractor agrees that he shall assume sole and complete responsibility for job site conditions during the course of construction of this Project, including safety of all persons and property; that this requirement shall apply continuously and not be limited to normal working hours; and that the Contractor shall defend, indemnify and hold the Owner and the Engineer harmless from any and all liability, real or alleged, in connection with the performance of work on this Project, excepting for liability arising from the sole negligence of the Owner or the Engineer.



INDEX MAP  
 SCALE: 1" = 600'  
 P.C. 8969  
 TRACT NO. 31352

REVISION 12-19-73  
 EXTEND SEWER EASEMENT NORTHERLY TO NORTH TRACT BOUNDARY (PAGE 3B)  
 APPROVED: R. L. Kopycky 16742 12/19/73

REVISION 11-7-73  
 1. ELIMINATE PROFILE NOT CALLING FOR "CONST. H.L.'S WITH RISE OF 1/4" PER FT TO EDGE OF R/W OR P.L." ON ALL PAGES  
 2. ADD NOTE 15. "CONST. H.L.'S WITH MIN DEPTH OF 5 FT. AT EDGE OF R/W"  
 APPROVED: R. L. Kopycky 16742 11/7/73

GENERAL NOTES:

- ELEVATIONS ARE IN FEET ABOVE U.S.C. & G.S. SEA LEVEL DATUM OF 1929.
  - NO REVISIONS SHALL BE MADE IN THESE PLANS WITHOUT THE APPROVAL OF THE COUNTY ENGINEER.
  - NO REPRESENTATIVE OF THE COUNTY ENGINEER WILL SURVEY OR LAY OUT ANY PORTION OF THE WORK.
  - GRADES TO WHICH THIS IMPROVEMENT IS TO BE CONSTRUCTED ARE SHOWN ON PLANS AND PROFILE GRADE POINTS FOR TOP OF CURB, CENTER LINE OF STREET, OR CENTER LINE OF ALLEYS ARE SHOWN BY CIRCLES ON PROFILES. AT ALL POINTS BETWEEN DESIGNATED POINTS THE GRADE SHALL BE ESTABLISHED SO AS TO CONFORM TO A STRAIGHT LINE DRAWN BETWEEN SAID DESIGNATED POINTS.
  - THE PRIVATE ENGINEER SHALL FURNISH THE COUNTY ENGINEER WITH GRADE SHEETS AND STATIONING FOR ALL HOUSE LATERALS AND "T" OR "T" BRANCHES AND SHALL PROVIDE STAKES FOR THEM AT THEIR PROPER LOCATIONS WITH STATIONING PLAINLY MARKED. ALL HOUSE LATERALS SHALL BE CONSTRUCTED IN A STRAIGHT ALIGNMENT AT RIGHT ANGLES FROM THE MAIN LINE SEWER EXCEPT AS SHOWN ON THE PLANS. HOUSE LATERALS FROM CHIMNEYS SHALL NOT HAVE AN ANGLE OF LESS THAN 45° WITH THE MAIN LINE SEWER. ANY CHANGE IN ALIGNMENT SHALL BE REQUESTED IN WRITING BY THE PRIVATE ENGINEER.
  - THE PRIVATE ENGINEER SHALL FURNISH THE HOUSE LATERAL DEPTH AT THE PROPERTY LINE BELOW THE TOP OF CURB ELEVATION FOR EACH HOUSE LATERAL ON THE GRADE SHEET.
  - BEFORE WORK CAN BE STARTED, THE CONTRACTOR MUST OBTAIN A PERMIT TO EXCAVATE IN COUNTY STREETS FROM THE L.A. COUNTY ROAD DEPT., DISTRICT OFFICE NO. 8, AND PAY A FEE TO THE COUNTY ENGINEER, 950 E. IMPERIAL HIGHWAY, ANAHEIM, CALIFORNIA 92801, OR ANTELOPE VALLEY REGIONAL OFFICE, TO COVER THE COST OF CONSTRUCTION INSPECTION AND RECORD PLANS.
  - IF WORK IS TO BE DONE IN A STATE HIGHWAY, A PERMIT MUST BE OBTAINED FROM THE STATE OF CALIFORNIA, DIVISION OF HIGHWAY, 120 SOUTH SPRING STREET, LOS ANGELES, CALIFORNIA.
  - APPROVAL OF THIS PLAN BY THE COUNTY OF LOS ANGELES DOES NOT CONSTITUTE A REPRESENTATION AS TO THE ACCURACY OF THE LOCATION OR THE EXISTENCE OR NON-EXISTENCE OF ANY UNDERGROUND UTILITY PIPE, OR STRUCTURE WITHIN THE LIMITS OF THIS PROJECT. THIS NOTE APPLIES TO ALL PAGES.
  - REFER TO SECTION 7-18.1.1 OF THE STANDARD SPECIFICATIONS, REGARDING SAFETY OBSTACLES.
- County Sanitation District #5000 Do not connections for the disposal of industrial wastes shall be made to sewer shown on these drawings without written permission from the Chief Engineer and General Manager of the County Sanitation Districts.

CONSTRUCTION NOTES:

- WORK SHALL BE CONSTRUCTED ACCORDING TO THE STANDARD SPECIFICATIONS FOR PUBLIC WORKS CONSTRUCTION 1976 EDITION WITH 7-17.7 SUPPLEMENTS AND COUNTY ENGINEER SPECIAL PROVISIONS FOR THE CONSTRUCTION OF SANITARY SEWERS DATED APRIL 10, 1978, AND SHALL BE PROSECUTED ONLY IN THE PRESENCE OF THE COUNTY ENGINEER.
- THE CONTRACTOR SHALL NOTIFY THE CONSTRUCTION DIVISION BY TELEPHONE, 974-7823, AT LEAST TWENTY-FOUR HOURS BEFORE STARTING ANY WORK UNDER THIS CONTRACT.
- HOUSE LATERALS TO BE CONSTRUCTED WITH INVERTS AT PROPERTY LINE 6 FEET BELOW CURB GRADE EXCEPT AS NOTED.
- WYE OR THE BRANCHES MAY BE USED FOR CONNECTIONS TO MAINLINE SEWERS EXCEPT AS NOTED.
- ALL STRUCTURES SHALL BE EITHER BRICK MANHOLES PER 8-3 OR PRECAST CONCRETE MANHOLES PER 8-36.
- PROVIDE STAKES ON THE PROPERTY LINE OR PROPERTY LINES PRODUCED AT RIGHT ANGLES TO THE SEWER LINE AT THE CENTER LINE OF EACH MANHOLE.
- MANHOLE TOPS IN UNIMPROVED RIGHTS OF WAY TO BE SIX INCHES ABOVE FINISHED GRADE.
- VITRIFIED CLAY PIPE JOINTS SHALL BE TYPE "B", "T", OR "D" PER STANDARD SPECIFICATIONS SECTION 300-2.
- IF A POWER POLE IS WITHIN THREE FEET OF THE SEWER, THE SEWER SHALL BE ENCASED, PER 8-23, CASE 2, TWO FEET ON EACH SIDE FROM THE POINT OF INTERFERENCE.
- IF DURING THE COURSE OF CONSTRUCTION IT IS DETERMINED THAT THERE IS LESS THAN FOUR FEET OF COVER OVER THE TOP OF A MAIN LINE OR HOUSE LATERAL V.C.P. SEWER WHICH IS NOT INDICATED ON THE PLANS, THE PIPE SHALL BE ENCASED PER 8-23, CASE 2 UNLESS OTHERWISE APPROVED BY THE COUNTY ENGINEER.
- ALL JOINTS BETWEEN CAST IRON PIPE AND VITRIFIED CLAY PIPE SHALL BE MADE WITH A RUBBER SLEEVE JOINT, TYPE "C" OR "D", (WITH RUSHING IF NECESSARY) PER STANDARD SPECIFICATIONS, SECTION 300-2.
- SEWERS TO BE TESTED FOR LEAKAGE PER SECTION 300-2.2.7 OF THE STANDARD SPECIFICATIONS AND SPECIAL PROVISIONS.
- REINFORCE ALL TRENCHES WITHIN PAVED AREAS TO MEET L.A. COUNTY ROAD DEPT. OR CALIFORNIA STATE HIGHWAY REQUIREMENTS IN ACCORDANCE WITH PERMITS.
- FULL COMPLIANCE WITH SECTION 306-1.53 OF THE SPECIAL PROVISIONS WILL BE REQUIRED FOR BACKFILL IN STREETS. CERTIFICATION OF BACKFILL COMPACTION AND SAND EQUIVALENTS BY A QUALIFIED, REGISTERED TESTING LABORATORY SHALL BE PROVIDED BY THE PERMITTEE PRIOR TO ISSUANCE OF A CERTIFICATE OF PARTIAL ACCEPTANCE.
- CONTRACT HOUSE LATERALS WITH MINIMUM DEPTH OF 3 FEET AT EDGE OF RIGHT OF WAY.

CONSTRUCTED IN  
 TRACT NO. 31352

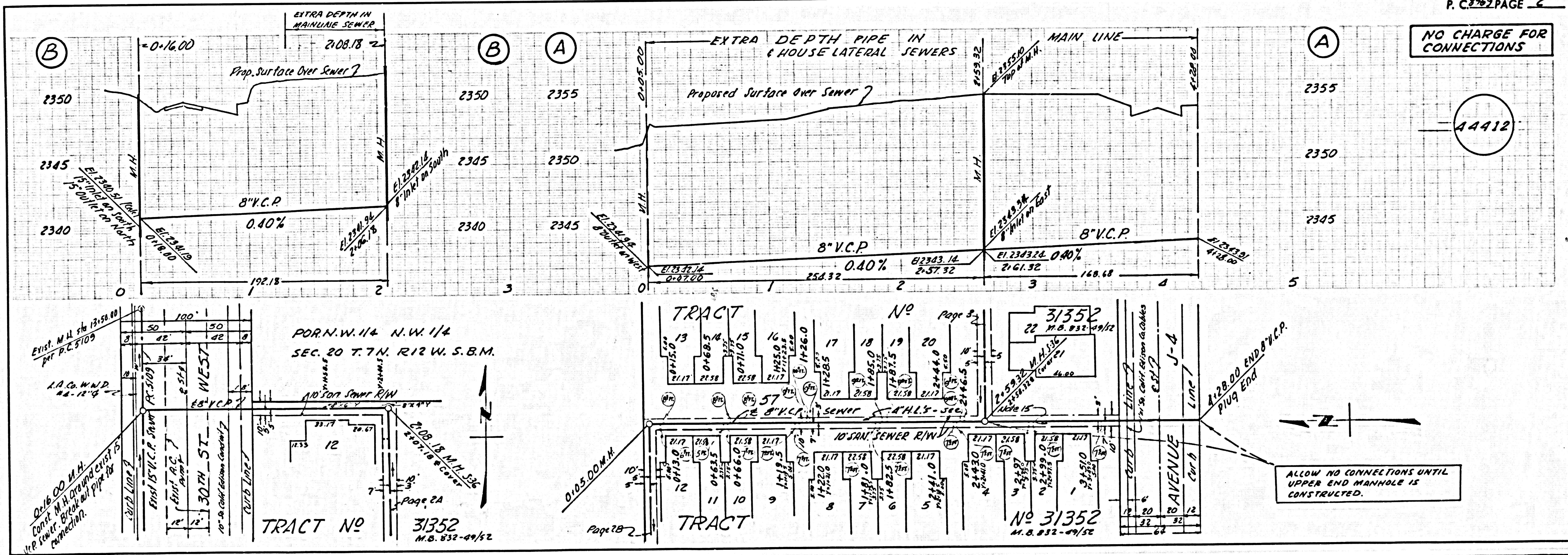
PRIVATE CONTRACT NO. 8969

W.S. 71  
 2 SHEETS, 4 PAGES  
 SCALE: VERT. 1" = 4' HORIZ. 1" = 40'  
 JULY, 1973  
 PREPARED IN THE OFFICES OF  
 SCHORP ENGINEERS  
 1540 VICTORY BLVD., VAN NUYS, CALIF.  
 BY: Kenneth Schorp  
 REG. C. E. No. 12355

THE FOLLOWING LATEST REVISED STANDARD PLANS ON FILE IN THE OFFICE OF THE COUNTY ENGINEER SHALL APPLY IN THE CONSTRUCTION OF THIS PROJECT.

LEGEND	8-1
MINIMUM PUBLIC SAFETY REQUIREMENTS	8-2
BRICK MANHOLE	8-3
STANDARD MANHOLE STEP	8-7
BIDDING FOR SEWER PIPE	8-21
CRACKING AND REPAIRING	8-22
WYE OR THE SUPPORT	8-23
ALLOWABLE TRENCH WIDTHS	8-24
LOCKING MANHOLE FRAME AND COVER	8-25
NON-REINFORCED PRECAST CONCRETE MANHOLE	8-26

COUNTY OF LOS ANGELES, CALIFORNIA  
 HARVEY T. BRANN COUNTY ENGINEER JOHN D. PARKHURST, CHIEF ENGINEER  
 APPROVED: [Signature] 9/10/73 APPROVED: [Signature] 9/10/73  
 REGIONAL ENGINEER DATE OFFICE ENGINEER  
 CHECKED: R. L. Kopycky 9/10/73  
 REG. C. E. NO. 16742 DATE  
 LANCASTER BLDG DIST. 8 I.N. 0250.02



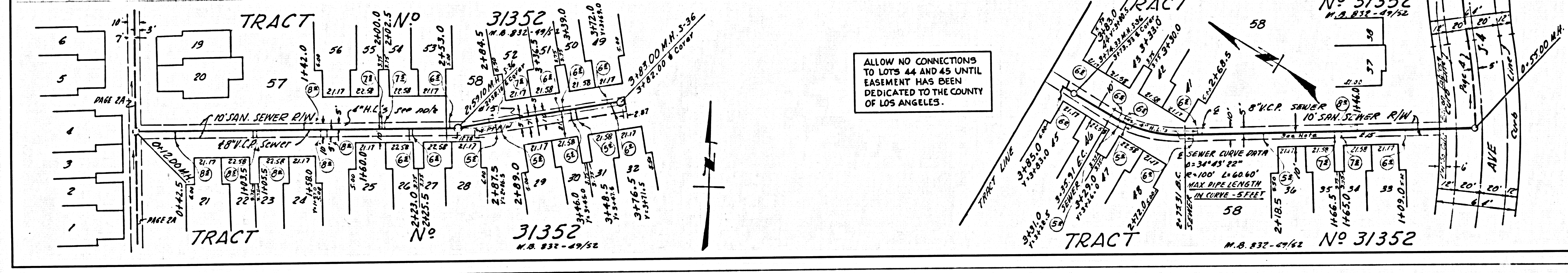
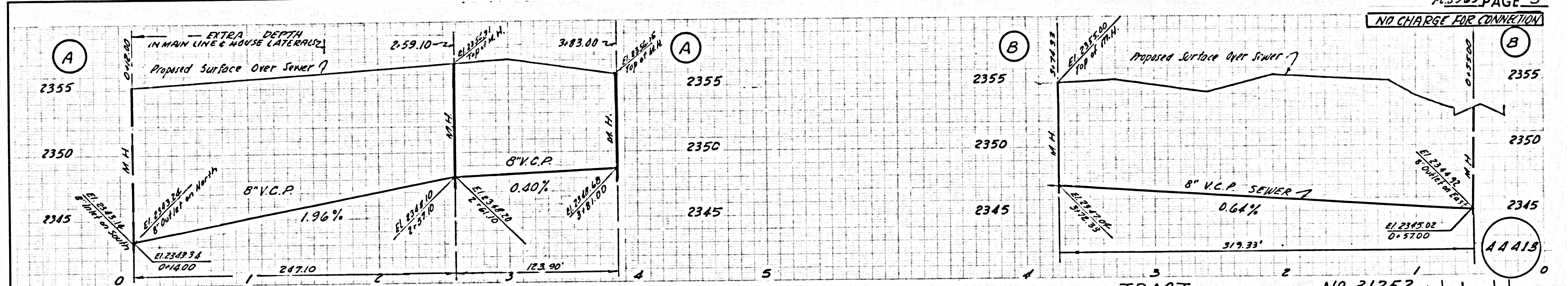
NO CHARGE FOR CONNECTIONS

44412

ALLOW NO CONNECTIONS UNTIL UPPER END MANHOLE IS CONSTRUCTED.



NO CHARGE FOR CONNECTION



NO CHARGE FOR CONNECTIONS

