

CONSTRUCTED  
**SEWERS FOR ALLEY E/O  
 DIVISION STREET  
 PRIVATE CONTRACT NO. 8971**

W.S. 65  
 SHEETS: 2 PAGES  
 SCALE: VERT. 1"=4' HORIZ. 1"=40'  
 AUG. 18, 1973  
 PREPARED IN THE OFFICES OF  
**HAROLD S. SLUTZKY CIVIL ENGINEER**  
 BY: *Harold S. Slutzky*  
 REG. C. E. No. 21125

44418

- GENERAL NOTES:**
1. ELEVATIONS ARE IN FEET ABOVE M.S.L. & U.S. SEA LEVEL DATUM OF 1929.
  2. NO REVISIONS SHALL BE MADE IN THESE PLANS WITHOUT THE APPROVAL OF THE COUNTY ENGINEER.
  3. NO REPRESENTATIVE OF THE COUNTY ENGINEER WILL SURVEY OR LAY OUT ANY PORTION OF THE WORK.
  4. GRADES TO WHICH THIS PROVISIONAL PLAN IS TO BE CONSTRUCTED ARE SHOWN ON PLANS AND PROFILES. GRADE POINTS FOR TOP OF CURB, CENTER LINE OF STREET, OR CENTER LINE OF ALLEY ARE SHOWN BY CIRCLES ON PROFILES. AT ALL POINTS BETWEEN DESIGNATED GRADE POINTS THE GRADE SHALL BE ESTABLISHED SO AS TO CONFORM TO A STRAIGHT LINE DRAWN BETWEEN SAID DESIGNATED POINTS.
  5. THE PRIVATE ENGINEER SHALL FURNISH THE COUNTY ENGINEER WITH GRADE SHEETS AND STATIONING FOR ALL HOUSE LATERALS AND "T" OR "Y" BRANCHES AND SHALL PROVIDE STAGES FOR THEM AT THIRY FOOT INTERVALS WITH STATIONING PLANNED THEREON. ALL HOUSE LATERALS SHALL BE CONSTRUCTED IN A STRAIGHT ALIGNMENT AT RIGHT ANGLES FROM THE MAIN LINE SEWER EXCEPT AS SHOWN ON THE PLANS. HOUSE LATERALS FROM CHIMNEYS SHALL NOT HAVE AN ANGLE OF LESS THAN 45° WITH THE MAIN LINE SEWER. ANY CHANGE IN ALIGNMENT SHALL BE REQUESTED IN WRITING BY THE PRIVATE ENGINEER.
  6. THE PRIVATE ENGINEER SHALL FURNISH THE HOUSE LATERAL DRAFTS AT THE PROPERTY LINE BELOW THE TOP OF CURB ELEVATION FOR EACH HOUSE LATERAL ON THE GRADE SHEET.
  7. BEFORE WORK CAN BE STARTED, THE CONTRACTOR MUST OBTAIN A PERMIT TO EXCAVATE IN COUNTY STREETS FROM THE L. A. COUNTY ROAD DEPT., DISTRICT OFFICE NO. 10, AND PAY A FEE TO THE COUNTY ENGINEER, BY RO. E. McFARLAND, HAVY, REGIONAL OFFICE, TO COVER THE COST OF CONSTRUCTION INSPECTION AND SECOND PLANS.
  8. IF WORK IS TO BE DONE IN A STATE HIGHWAY, A PERMIT MUST BE OBTAINED FROM THE STATE OF CALIFORNIA, DIVISION OF HIGHWAYS, 120 SOUTH DRYING STREET, LOS ANGELES, CALIFORNIA.
  9. APPROVAL OF THIS PLAN BY THE COUNTY OF LOS ANGELES DOES NOT CONSTITUTE A REPRESENTATION AS TO THE ACCURACY OF THE LOCATION OF OR THE EXISTENCE OR NON-EXISTENCE OF ANY UNDERGROUND UTILITY PIPE, OR STRUCTURE WITHIN THE LIMITS OF THIS PROJECT. THIS NOTE APPLIES TO ALL PAGES.
  10. REFER TO SECTION 11-11.1 OF THE STANDARD SPECIFICATIONS, REGARDING SAFETY CORDS.
  11. THE CONTRACTOR SHALL NOTIFY THE PALMDALE WATER DISTRICT (805) 947-4111 24 HOURS PRIOR TO START OF CONSTRUCTION.

County Sanitation Districts shall be notified prior to the following so that required inspection can be made (Phone 337-1025 - 836-1101)

**ACCEPTANCE OF THE PROJECT**  
 No economic loss for the City of Palmdale shall be made by the Industrial Workers shall be made without written permission of the Chief Engineer and General Manager of the County Sanitation District No. 9.

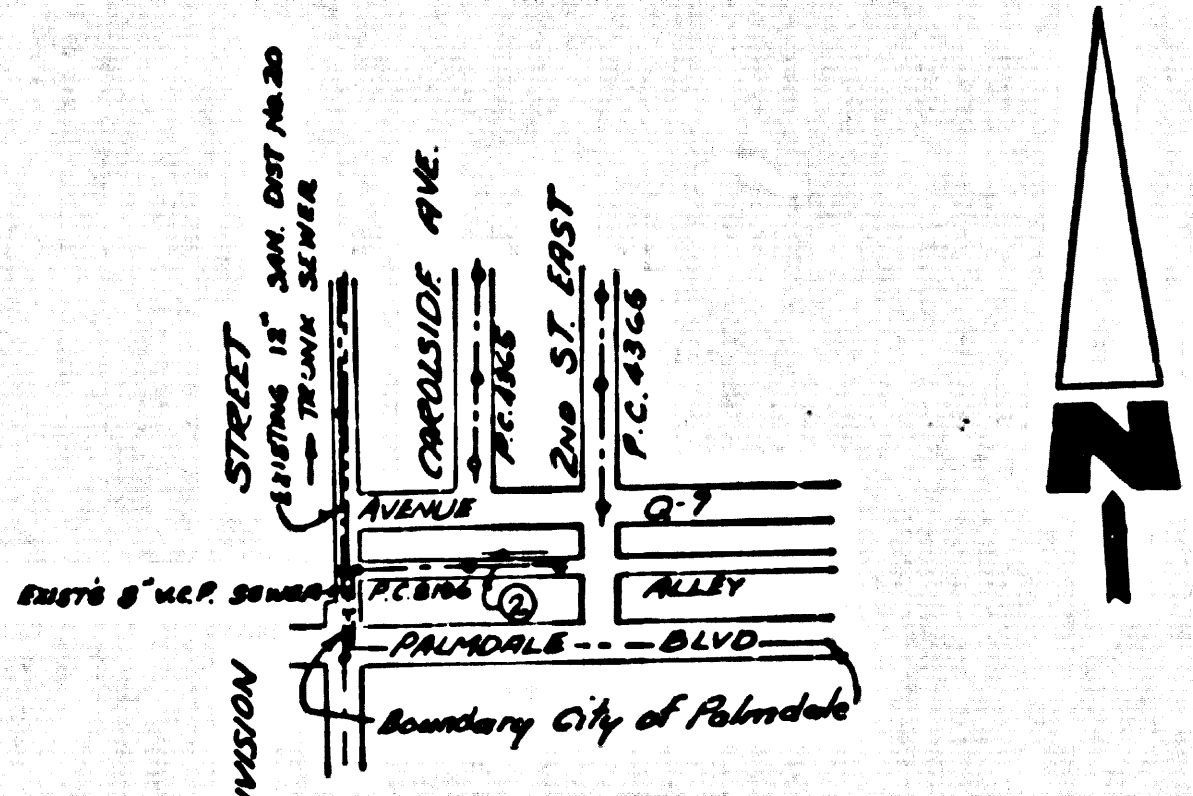
- CONSTRUCTION NOTES:**
1. WORK SHALL BE CONSTRUCTED ACCORDING TO THE STANDARD SPECIFICATIONS FOR PUBLIC WORKS CONSTRUCTION (1972 EDITION) WITH 20 E. 78 SUPPLEMENTS AND COUNTY ENGINEER SPECIAL PROVISIONS FOR THE CONSTRUCTION OF SANITARY SEWERS DATED APRIL 16, 1972 AND SHALL BE PROSECUTED ONLY IN THE PRESENCE OF THE COUNTY ENGINEER.
  2. THE CONTRACTOR SHALL NOTIFY THE CONSTRUCTION DIVISION BY TELEPHONE (813) 974-7288 AT LEAST TWENTY-FOUR HOURS BEFORE STARTING ANY WORK UNDER THE CONTRACT.
  3. HOUSE LATERALS TO BE CONSTRUCTED WITH INVERTS AT PROPERTY LINE & FIVE FEET BELOW CURB GRADE EXCEPT AS NOTED.
  4. WYE OR THE BRANCHES MAY BE USED FOR CONNECTIONS TO BATHROOM SEWERS EXCEPT AS NOTED.
  5. ALL STRUCTURES SHALL BE EITHER SPREED MAHOLES PER S. 20 OR PRECAST CONCRETE MANHOLES PER S. 20, EXCEPT AS NOTED.
  6. PROVIDE STAIRS ON THE PROPERTY LINE OR PROPERTY LINES PRODUCED AT RIGHT ANGLES TO THE SEWER LINE AT THE CENTER LINE OF EACH MANHOLE.
  7. MANHOLE TOPS IN UNIMPROVED RIGHTS OF WAY TO BE SIX INCHES ABOVE FINISHED GRADE.
  8. WITHIN CLAY PIPE JOINTS SHALL BE TYPE "T", "C" OR "Y" PER STANDARD SPECIFICATIONS SECTION 300-2.
  9. IF A POWER POLE IS WITHIN THREE FEET OF THE SEWER, THE SEWER SHALL BE ENCASED, PER S. 20, CASE 2, TWO FEET ON EACH SIDE FROM THE POINT OF INTERFERENCE.
  10. IF DURING THE COURSE OF CONSTRUCTION IT IS DETERMINED THAT THERE IS LESS THAN FOUR FEET OF COVER OVER THE TOP OF A MAIN LINE OR HOUSE LATERAL UNDER WHICH IS NOT INDICATED ON THE PLANS, THE PIPE SHALL BE ENCASED PER S. 20, CASE 2 UNLESS OTHERWISE APPROVED BY THE COUNTY ENGINEER.
  11. ALL JOINTS BETWEEN CAST IRON PIPE AND WITHIN CLAY PIPE SHALL BE MADE WITH A RUBBER SLAVE JOINT, TYPE "C" OR "Y", WITH BUSHING IF NECESSARY PER STANDARD SPECIFICATIONS SECTION 300-2.
  12. SEWERS TO BE TESTED FOR LEAKAGE PER SECTION 206-2.2.2 OF THE STANDARD SPECIFICATIONS AND SPECIAL PROVISIONS.
  13. REPAIR ALL TRENCHES WITHIN PAVED AREAS TO MEET L.A. COUNTY ROAD DEPT. OR CALIFORNIA STATE HIGHWAY REQUIREMENTS IN ACCORDANCE WITH PERMITS.
  14. FULL COMPLIANCE WITH SECTION 06-1.0.3 OF THE SPECIAL PROVISIONS WILL BE REQUIRED FOR BACKFILL IN STREETS. CERTIFICATION OF BACKFILL COMPLETION AND BRAND EQUIVALENTS BY A QUALIFIED REGISTERED TESTING LABORATORY SHALL BE PROVIDED BY THE PERMITTEE PRIOR TO THE ISSUANCE OF A CERTIFICATE OF PARTIAL ACCEPTANCE.

THE FOLLOWING LATEST REVISED STANDARD PLANS ON FILE IN THE OFFICE OF THE COUNTY ENGINEER SHALL APPLY IN THE CONSTRUCTION OF THIS PROJECT.

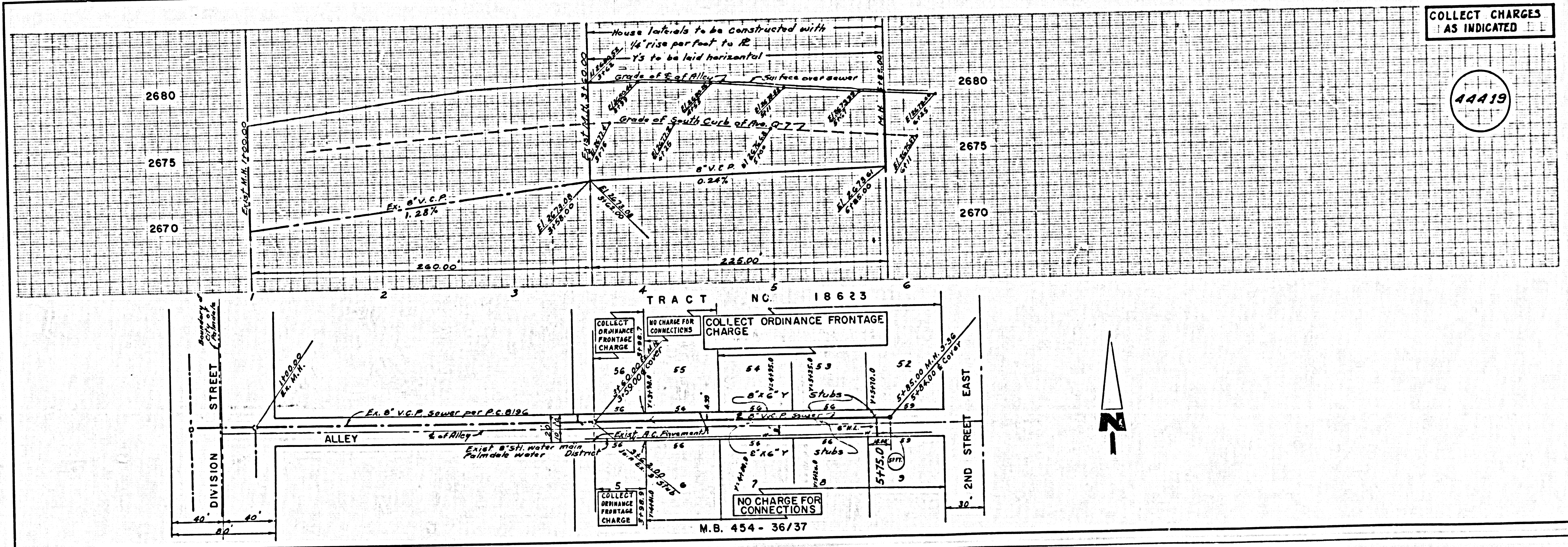
LEGEND	0-1
MINIMUM PUBLIC SAFETY REQUIREMENTS	0-2
BRICK MANHOLES	0-3
STANDARD MANHOLE STEP	0-17
WOODING FOR SEWER PIPE	0-20
CRADLING AND ENCASING	0-20
WYE OR THE SUPPORT	0-20
ALSO AVAILABLE FROM THE	0-20
STOCKING MANHOLE FRAME AND COVER	0-20
NON-REINFORCED PRECAST CONCRETE MANHOLE	0-20

COUNTY OF LOS ANGELES, CALIFORNIA  
 HARVEY T. BRANDT, COUNTY ENGINEER JOHN D. PARKHURST, CHIEF ENGINEER  
 APPROVED *John D. Parkhurst* 1973 APPROVED *H. T. Brandt*  
 REGIONAL ENGINEER DISTRICT ENGINEER  
 CHECKED *Rob. Kopych* 1973  
 DATE  
 M.O. C.E. No. 16742  
 PALMDALE BLDG. DIST. B. 10 J.N. 0372.15

B.M. BL 2658 ELEV. 2685.419  
 State Highway Monument in well 12" down  
 @ centerline intersection of Division  
 St & Palmdale Blvd.  
 PALMDALE QUAD. 1965



Note: Number in Circles indicates Page Number  
 INDEX MAP  
 P.C. 8971  
 SCALE: 1"=600'



COLLECT CHARGES AS INDICATED

44419