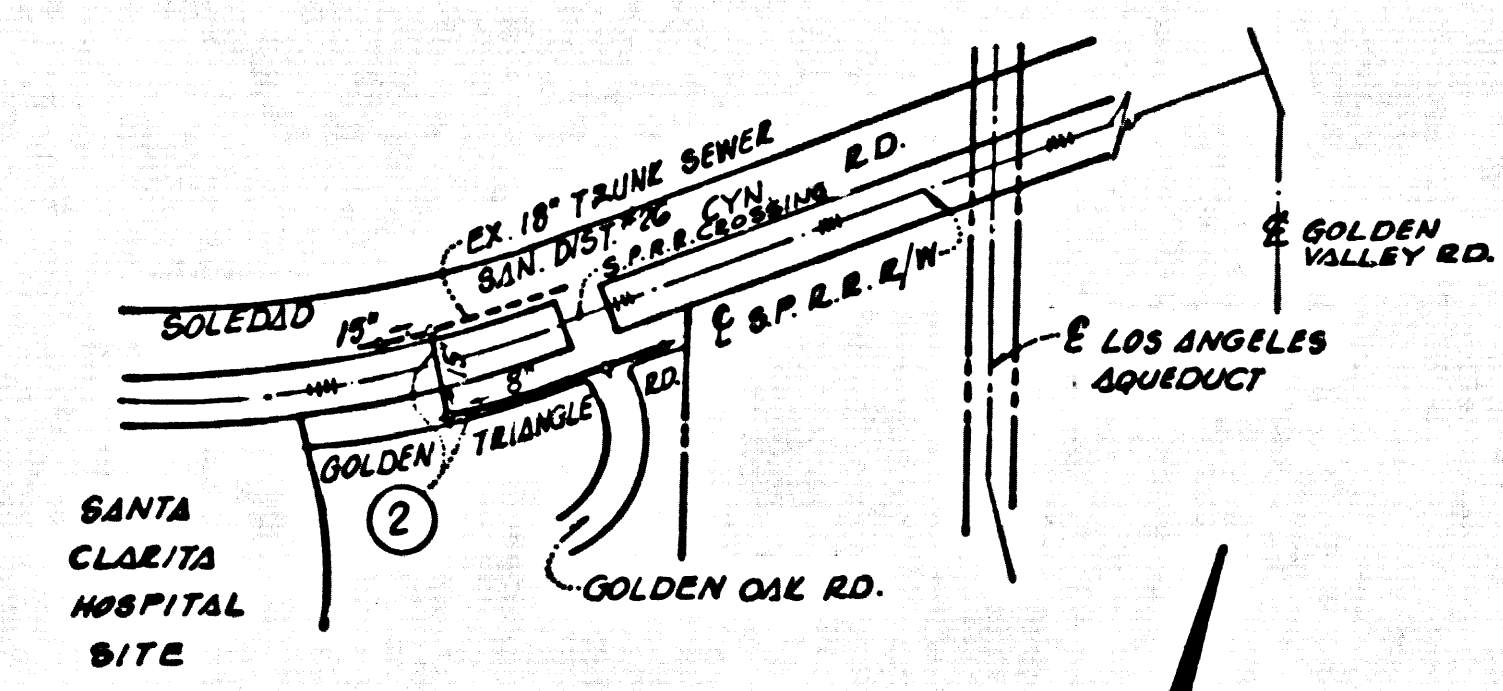


B.M. 51 923 ELEV. 1273.944
 LEAD & SCREEN NEAR SLY END OF ELY CONC. ABUT-
 MENT CULVERT BRIDGE NO. 4472 UNDER S.P.A.R. 60'
 SLY OF E. SOLEDAD CYN. RD. 02 N.W. 1/4 OF REUTHER
 AVE. 27 MI. ELY OF BOUQUET CYN. RD.
 NEWHALL QUAD. 1953

DOUBLE SCALE

PRIVATE ENGINEERS NOTICE TO CONTRACTOR
 THE EXISTENCE AND LOCATION OF ANY UNDERGROUND
 UTILITY OR STRUCTURE SHOWN ON THESE PLANS ARE
 OBTAINED BY A SEARCH OF THE AVAILABLE RECORDS.
 TO THE BEST OF OUR KNOWLEDGE THERE ARE NO
 EXISTING UTILITIES EXCEPT AS SHOWN ON THIS MAP.
 THE CONTRACTOR IS REQUIRED TO TAKE DUE PRE-
 CAUTIONARY MEASURES TO PROTECT THE UTILITY
 LINES SHOWN AND ANY OTHER LINES NOT OF
 RECORD OR NOT SHOWN ON THIS DRAWING.

Joseph C. Reichenberger 8/6/73
 JOSEPH C. REICHENBERGER E.C.E. 18034



INDEX MAP
 SCALE: 1"=600'
 P.C. 8974

NOTE:
 NO CONSTRUCTION IS TO BEGIN UPSTREAM OF
 THE NORTH SOUTHERN PACIFIC RAILROAD
 R/W LINE, STA. 7+99.03, PRIOR TO OBTAINING
 THE G' SEWER EASEMENT ACROSS THE
 RAILROAD R/W.
 ISSUE NO PERMITS UNTIL R/W
 IS CLEAR.

GENERAL NOTES:

- ELEVATIONS ARE IN FEET ABOVE U.S.C. & G.S. SEA LEVEL DATUM OF 1929.
- NO REVISIONS SHALL BE MADE IN THESE PLANS WITHOUT THE APPROVAL OF THE COUNTY ENGINEER.
- NO REPRESENTATIVE OF THE COUNTY ENGINEER WILL SURVEY OR LAY OUT ANY PORTION OF THE WORK.
- GRADES TO WHICH THIS IMPROVEMENT IS TO BE CONSTRUCTED ARE SHOWN ON PLANS AND PROFILES. GRADE POINTS FOR TOP OF CURB, CENTER LINE OF STREETS, OR CENTER LINE OF ALLEYS ARE SHOWN BY CIRCLES ON PROFILES. AT ALL POINTS BETWEEN DESIGNATED POINTS THE GRADE SHALL BE ESTABLISHED SO AS TO CONFORM TO A STRAIGHT LINE DRAWN BETWEEN SAID DESIGNATED POINTS.
- THE PRIVATE ENGINEER SHALL FURNISH THE COUNTY ENGINEER WITH GRADE SHEETS AND STATIONING FOR ALL HOUSE LATERALS AND "T" OR "Y" BRANCHES AND SHALL PROVIDE STAKES FOR THEM AT THEIR PROPER LOCATIONS WITH STATIONING PLAINLY MARKED. ALL HOUSE LATERALS SHALL BE CONSTRUCTED IN A STRAIGHT ALIGNMENT AT RIGHT ANGLES FROM THE MAIN LINE SEWER EXCEPT AS SHOWN ON THE PLANS. HOUSE LATERALS FROM CHIMNEYS SHALL NOT HAVE AN ANGLE OF LESS THAN 45° WITH THE MAIN LINE SEWER. ANY CHANGE IN ALIGNMENT SHALL BE REQUESTED IN WRITING BY THE PRIVATE ENGINEER.
- THE PRIVATE ENGINEER SHALL FURNISH THE HOUSE LATERAL DEPTH AT THE PROPERTY LINE BELOW THE TOP OF CURB ELEVATION FOR EACH HOUSE LATERAL ON THE GRADE SHEET.
- BEFORE WORK CAN BE STARTED, THE CONTRACTOR MUST OBTAIN A PERMIT TO EXCAVATE IN COUNTY STREETS FROM THE L.A. COUNTY ROAD DEPT., DISTRICT OFFICE NO. 2, AND PAY A FEE TO THE COUNTY ENGINEER, ROOM 18, 9150 E. IMPERIAL HWY., DOWNNEY, OR SANTA CLARITA VALLEY REGIONAL OFFICE, TO COVER THE COST OF CONSTRUCTION INSPECTION AND RECORD PLANS.
- IF WORK IS TO BE DONE IN A STATE HIGHWAY, A PERMIT MUST BE OBTAINED FROM THE STATE OF CALIFORNIA, DIVISION OF HIGHWAYS, 130 SOUTH SPRING STREET, LOS ANGELES, CALIFORNIA.
- APPROVAL OF THIS PLAN BY THE COUNTY OF LOS ANGELES DOES NOT CONSTITUTE A REPRESENTATION AS TO THE ACCURACY OF THE LOCATION OF OR THE EXISTENCE OR NON-EXISTENCE OF ANY UNDERGROUND UTILITY PIPE, OR STRUCTURE WITHIN THE UNITS OF THIS PROJECT. THIS NOTE APPLIES TO ALL PAGES.
- REFER TO SECTION 7-10.4.1 OF THE STANDARD SPECIFICATIONS, REGARDING SAFETY ORDERS.

Acceptance of the Project
 By connections for the disposal of industrial wastes shall be made to sewerage shown on these drawings without written permission from the Chief Engineer and General Manager of the County Sanitation Districts.

CONSTRUCTION NOTES:

- WORK SHALL BE CONSTRUCTED ACCORDING TO THE STANDARD SPECIFICATIONS FOR PUBLIC WORKS CONSTRUCTION 1970 EDITION WITH 7-17-72 SUPPLEMENTS AND COUNTY ENGINEER SPECIAL PROVISIONS FOR THE CONSTRUCTION OF SANITARY SEWERS DATED APRIL 10, 1972, AND SHALL BE PROSECUTED ONLY IN THE PRESENCE OF THE COUNTY ENGINEER.
- THE CONTRACTOR SHALL NOTIFY THE CONSTRUCTION DIVISION BY TELEPHONE, (213) 974-7289, AT LEAST TWENTY-FOUR HOURS BEFORE STARTING ANY WORK UNDER THIS CONTRACT.
- HOUSE LATERALS TO BE CONSTRUCTED WITH INVERTS AT PROPERTY LINE 4 FEET BELOW CURB GRADE EXCEPT AS NOTED.
- WYE OR TEE BRANCHES MAY BE USED FOR CONNECTIONS TO MAINLINE SEWERS EXCEPT AS NOTED.
- ALL STRUCTURES SHALL BE EITHER BRICK MANHOLES PER S-3 OR PRECAST CONCRETE MANHOLES PER S-3, EXCEPT AS NOTED.
- PROVIDE STAKES TO THE PROPERTY LINE OR PROPERTY LINES PRODUCED AT RIGHT ANGLES TO THE SEWER LINE AT THE CENTER LINE OF EACH MANHOLE.
- MANHOLE TOPS IN UNIMPROVED RIGHTS OF WAY TO BE LEVEL WITH FINISHED GRADE.
- VITRIFIED CLAY PIPE JOINTS SHALL BE TYPE "B", "P", OR "Q" PER STANDARD SPECIFICATIONS SECTION 306.2.
- IF A POWER POLE IS WITHIN THREE FEET OF THE SEWER, THE SEWER SHALL BE ENCASED, PER S-23, CASE II, TWO FEET ON EACH SIDE FROM THE POINT OF INTERFERENCE.
- IF DURING THE COURSE OF CONSTRUCTION IT IS DETERMINED THAT THERE IS LESS THAN FOUR FEET OF COVER OVER THE TOP OF A MAIN LINE OR HOUSE LATERAL V.C.P. SEWER WHICH IS NOT INDICATED ON THE PLANS, THE PIPE SHALL BE ENCASED PER S-23, CASE II UNLESS OTHERWISE APPROVED BY THE COUNTY ENGINEER.
- ALL JOINTS BETWEEN CAST IRON PIPE AND VITRIFIED CLAY PIPE SHALL BE MADE WITH A RUBBER SLEEVE JOINT, TYPE "C" OR "D", WITH BUSHING IF NECESSARY PER STANDARD SPECIFICATIONS, SECTION 306.2.
- SEWERS TO BE TESTED FOR LEAKAGE PER SECTION 306-2.3.7 OF THE STANDARD SPECIFICATIONS AND SPECIAL PROVISIONS.
- RESURFACE ALL TRENCHES WITHIN PAVED AREAS TO MEET L.A. COUNTY ROAD DEPT. OR CALIFORNIA STATE HIGHWAY REQUIREMENTS IN ACCORDANCE WITH PERMITS.
- THE CONTRACTOR MAY AT HIS OPTION, "SHORT TUNNEL" ANY EXISTING SURFACE IMPROVEMENTS (PER SPEC'S). THE CONTRACTOR IS TO NOTIFY SOUTHERN CALIF. GAS CO. A MIN. OF 48 HOURS PRIOR TO EXCAVATION FOR LOCATION AND MARKING OF 8" HIGH PRESSURE GAS LINE. PHONE (213) 246-4061, EXT. 356.

TO BE CONSTRUCTED IN
GOLDEN TRIANGLE ROAD

PRIVATE CONTRACT NO. 8974
 INDEX 161-S-129

W.S. 82
 1 SHEET; 2 PAGES

SCALE: VERT. 1"=8'
 HORIZ. 1"=40'
 AUGUST, 1973
 PREPARED IN THE OFFICES OF

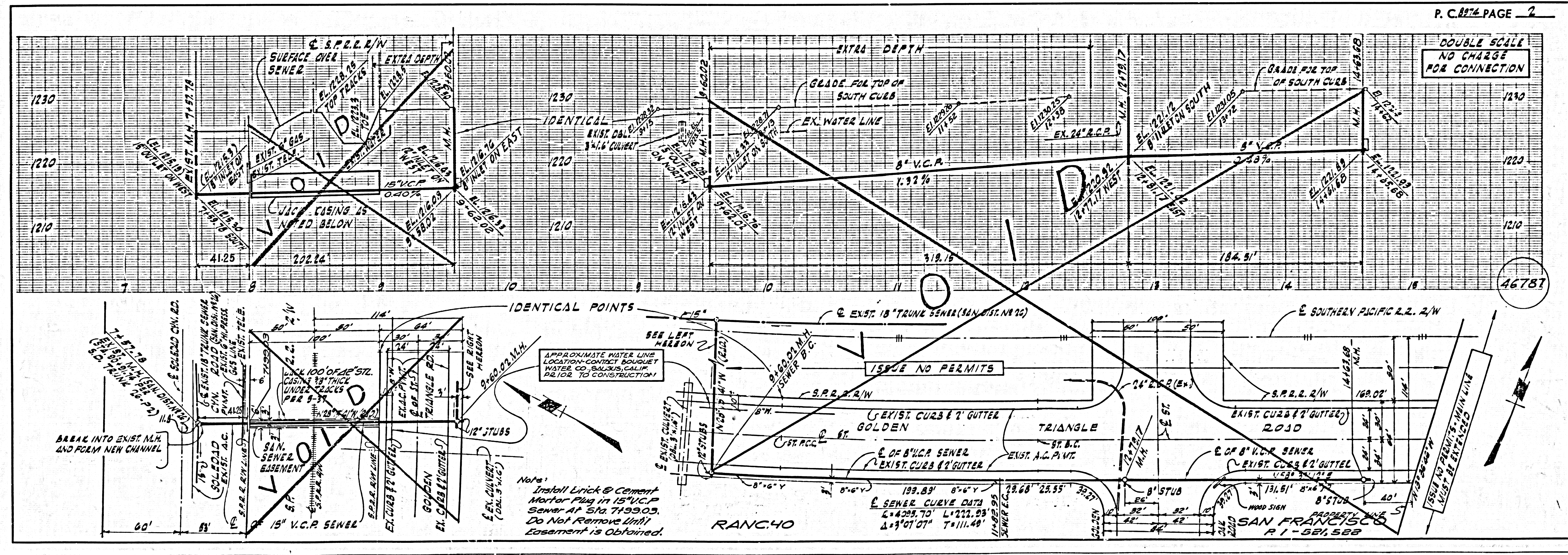
DANIEL MANN JOHNSON & MENDENHALL
 2117 TULSA ROAD, SUITE 2112
 THOUSAND OAKS, CALIFORNIA
 BY: *Joseph C. Reichenberger* 8/6/73
 REG. C. E. No. 18034

46786

THE FOLLOWING LATEST REVISED STANDARD PLANS ON FILE IN THE OFFICE OF THE COUNTY ENGINEER SHALL APPLY IN THE CONSTRUCTION OF THIS PROJECT:

LEGEND	S-1
MINIMUM PUBLIC SAFETY REQUIREMENTS	S-2
BRICK MANHOLE	S-3
STANDARD MANHOLE STEP	S-7
BEDDING FOR SEWER PIPE	S-8
CRADLING AND ENCASEMENT	S-9
WYE OR TEE SUPPORT	S-10
ALLOWABLE TRENCH WIDTHS	S-13
LOCKING MANHOLE FRAME AND COVER	S-14
NON-REINFORCED PRECAST CONCRETE MANHOLE	S-15
BACKFILL INTO EXIST. BRICK OR PRECAST CONCRETE MANHOLE	S-16
JACKHARD PIPE	S-17

COUNTY OF LOS ANGELES, CALIFORNIA
 HARVEY T. RANDT, COUNTY ENGINEER JOHN D. PARKHURST, CHIEF ENGINEER
 APPROVED *Amado C. ...* 9/27/73 APPROVED *J. ...*
 REGIONAL ENGINEER (DATE) OFFICE ENGINEER
 CHECKED *...* 8/27/73
 (DATE)
 NO. C.E. NO. A-390
 SANTA CLARITA VALLEY BLDG. DIST. 9-2 I.N. 0372.17



NOTE:
 Install Lick & Cement
 Mortar Plug in 15" V.C.P.
 Sewer at Sta. 7+99.03.
 Do Not Remove Until
 Easement is Obtained.

RANC.40

DOUBLE SCALE
 NO CHARGE
 FOR CONNECTION

46787