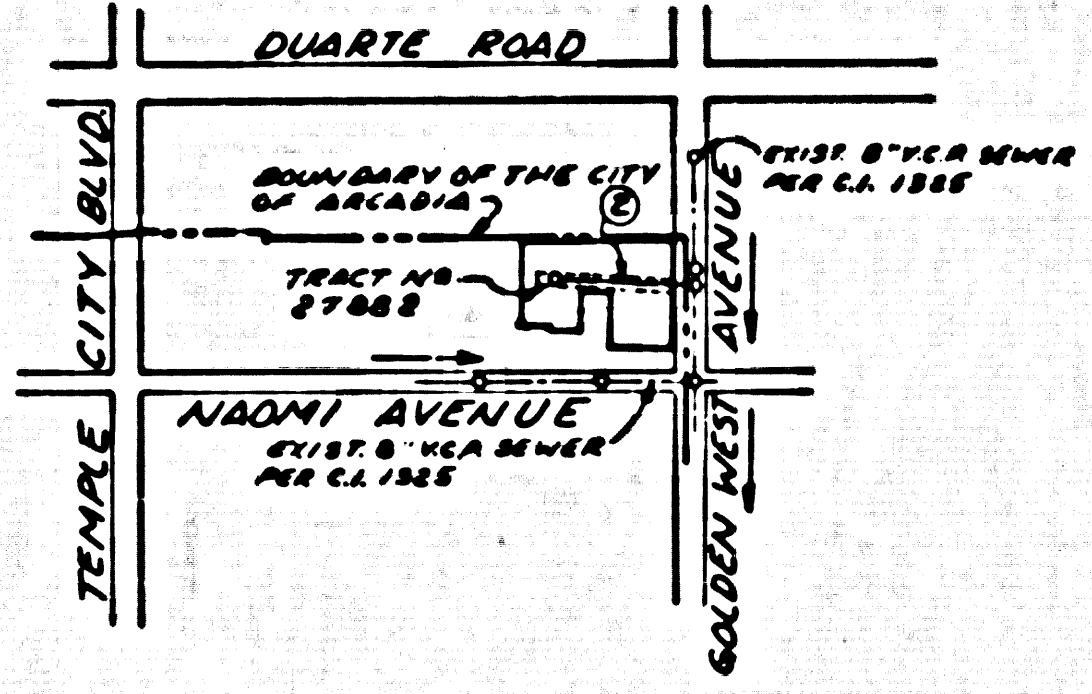


B.M. BG-3591 ELEV. 505.493'
 ROAD DEPT. TAG 1 FT. W. OF B.C.R. 32 FT.
 51.69 FT. W. OF E. INT. QUARTE ROAD
 TEMPLE CITY BLVD.
 ARCADIA QUAD. 19.20.



INDEX MAP
 SCALE: 1"=600'
 P.C. 8978

NUMBER IN CIRCLE INDICATES PAGE NUMBER.

GENERAL NOTES:

1. DATUMS ARE IN FEET ABOVE U.S.C. & G.S. SEA LEVEL DATUM OF 1929.
2. NO REVISIONS SHALL BE MADE IN THESE PLANS WITHOUT THE APPROVAL OF THE COUNTY ENGINEER.
3. NO REPRESENTATIVE OF THE COUNTY ENGINEER WILL SURVEY OR LAY OUT ANY PORTION OF THE WORK.
4. GRADES TO WHICH THIS IMPROVEMENT IS TO BE CONSTRUCTED ARE SHOWN ON PLANS AND PROFILES. GRADE POINTS FOR TOP OF CURBS, CENTER LINE OF STREETS, OR CENTER LINE OF ALLEYS AND LOCATIONS OF CURBS OR PROFILES AT ALL POINTS BETWEEN DESIGNATED POINTS THE GRADE SHALL BE ESTABLISHED SO AS TO CONFORM TO A STRAIGHT LINE DRAWN BETWEEN SAID DESIGNATED POINTS.
5. THE PRIVATE ENGINEER SHALL FURNISH THE COUNTY ENGINEER WITH GRADE SHEETS AND STATIONINGS FOR ALL HOUSE LATERALS AND "Y" OR "T" BRANCHES AND SHALL PROVIDE STAKES FOR THEM AT THEIR PROPER LOCATIONS WITH STATIONING PLAINLY MARKED. ALL HOUSE LATERALS SHALL BE CONSTRUCTED IN A STRAIGHT ALIGNMENT AT RIGHT ANGLES FROM THE MAIN LINE SEWER EXCEPT AS SHOWN ON THE PLANS. HOUSE LATERALS FROM COLUMNS SHALL NOT HAVE AN ANGLE OF LESS THAN 45° WITH THE MAIN LINE SEWER. ANY CHANGE IN ALIGNMENT SHALL BE REQUESTED BY WRITING BY THE PRIVATE ENGINEER.
6. THE PRIVATE ENGINEER SHALL FURNISH THE HOUSE LATERAL DEPTH AT THE 2 1/2' LINE BELOW SURFACE OVER SEWER FOR EACH HOUSE LATERAL ON THE GRADE SHEET.
7. BEFORE WORK CAN BE STARTED, THE CONTRACTOR MUST OBTAIN A PERMIT TO EXCAVATE IN COUNTY SHEETS FROM THE L.A. COUNTY ROAD DEPT., DISTRICT OFFICE NO. 2, AND PAY A FEE TO THE COUNTY ENGINEER, SAN GABRIEL VALLEY REGIONAL OFFICE, TO COVER THE COST OF CONSTRUCTION INSPECTION AND RECORD PLANS.
8. IF WORK IS TO BE DONE IN A STATE HIGHWAY, A PERMIT MUST BE OBTAINED FROM THE STATE OF CALIFORNIA, DIVISION OF HIGHWAYS, 138 SOUTH SPRING STREET, LOS ANGELES, CALIFORNIA.
9. APPROVAL OF THIS PLAN BY THE COUNTY OF LOS ANGELES DOES NOT CONSTITUTE A REPRESENTATION AS TO THE ACCURACY OF THE LOCATION OF OR THE EXISTENCE OR NON-EXISTENCE OF ANY UNDERGROUND UTILITY PIPE, OR STRUCTURE WITHIN THE LIMITS OF THIS PROJECT. THIS NOTE APPLIES TO ALL PAGES.
10. REFER TO SECTION F-18.4.3 OF THE STANDARD SPECIFICATIONS, REGARDING SAFETY CUES.
11. PERMIT MUST BE OBTAINED FROM THE CITY OF ARCADIA FOR THAT PORTION OF THE WORK WITHIN THE CITY LIMITS.

Company Sanitation Districts shall be notified prior to the following so that required inspection can be made (Phone 337-1085 • 698-1161).
 No connections for the disposal of industrial wastes shall be made to sewers without the written permission from the Chief Engineer and General Manager of the County Sanitation Districts.

CONSTRUCTION NOTES:

1. WORK SHALL BE CONSTRUCTED ACCORDING TO THE STANDARD SPECIFICATIONS FOR PUBLIC WORKS CONSTRUCTION (1970 EDITION WITH 1972 SUPPLEMENTS) AND COUNTY ENGINEER SPECIAL PROVISIONS FOR THE CONSTRUCTION OF SANITARY SEWERS DATED APRIL 12, 1972, AND SHALL BE PROSECUTED ONLY IN THE PRESENCE OF THE COUNTY ENGINEER.
2. THE CONTRACTOR SHALL NOTIFY THE CONSTRUCTION DIVISION BY TELEPHONE, IN PERSON 9:00 A.M. TO 5:00 P.M., AT LEAST TWENTY-FOUR HOURS BEFORE STARTING ANY WORK UNDER THIS CONTRACT.
3. HOUSE LATERALS TO BE CONSTRUCTED WITH INVERTS AT PROPERTY LINE 6 FEET BELOW CURB GRADE EXCEPT AS NOTED.
4. "Y" OR "T" BRANCHES MAY BE USED FOR CONNECTIONS TO MAINLINE SEWERS EXCEPT AS NOTED.
5. ALL STRUCTURES SHALL BE EITHER BRICK MANHOLES PER 5.3 OF SPECLET CONCRETE MANHOLES PER 5.3K, EXCEPT AS NOTED.
6. PROVIDE STAKES ON THE PROPERTY LINE OR PROPERTY LINES PRODUCED AT RIGHT ANGLES TO THE SEWER LINE AT THE CENTER LINE OF EACH MANHOLE.
7. MANHOLE TOPS IN UNIMPROVED RIGHTS OF WAY TO BE SIX INCHES ABOVE FINISHED GRADE.
8. WITHIN CLAY PIPE JOINTS SHALL BE TYPE "T", "F", OR "H" PER STANDARD SPECIFICATIONS SECTION 200.2.
9. IF A POWER POLE IS WITHIN THREE FEET OF THE SEWER, THE SEWER SHALL BE ENCASED, PER 5.32, CASE II, TWO FEET ON EACH SIDE FROM THE POINT OF INTERFERENCE.
10. IF DURING THE COURSE OF CONSTRUCTION IT IS DETERMINED THAT THERE IS LESS THAN FOUR FEET OF COVER OVER THE TOP OF A MAIN LINE OR HOUSE LATERAL V.C.P. SEWER WHICH IS NOT INDICATED ON THE PLANS, THE PIPE SHALL BE ENCASED PER 5.32, CASE II UNLESS OTHERWISE APPROVED BY THE COUNTY ENGINEER.
11. ALL JOINTS BETWEEN CAST IRON PIPE AND WITHIN CLAY PIPE SHALL BE MADE WITH A RUBBER SLEEVE JOINT, TYPE "C" OR "W", WITHIN THE LIMITS OF NECESSITY PER STANDARD SPECIFICATIONS, SECTION 200.2.
12. SEWERS TO BE TESTED FOR LEAKAGE PER SECTION 200.2.2 OF THE STANDARD SPECIFICATIONS AND SPECIAL PROVISIONS.
13. RESURFACE ALL TRENCHES WITHIN PAVED AREAS TO MEET L.A. COUNTY ROAD DEPT. OR CITY OF ARCADIA IN ACCORDANCE WITH PERMITS.
14. FULL COMPLIANCE WITH SECTION 206.1.2.3 OF THE SPECIAL PROVISIONS WILL BE REQUIRED FOR BACKFILL IN STREETS. CERTIFICATION OF BACKFILL COMPACTION AND SAND EQUIVALENTS BY A QUALIFIED, REGISTERED TESTING LABORATORY SHALL BE PROVIDED BY THE PERMITTEE PRIOR TO THE ISSUANCE OF A CERTIFICATE OF PARTIAL ACCEPTANCE.
15. PROFILES, OR PROFILES AT ELEVATIONS, WHERE LATERALS INDICATE HOUSE LATERALS SHALL BE CONSTRUCTED WITH AN 8" DIA. AND PAID TO FRONT OF MAIN LINE.

PROFILE, ALIGNMENT AND GRADE OF
SANITARY SEWERS PAGE 1
 TO BE CONSTRUCTED IN
 TRACT No. 27882

PRIVATE CONTRACT NO. 8978

W.S. 44 P. 22
 1 SHEETS; 2 PAGES
 SCALE: VERT. 1"=4' HORIZ. 1"=40'
 DECEMBER, 1973
 PREPARED IN THE OFFICES OF

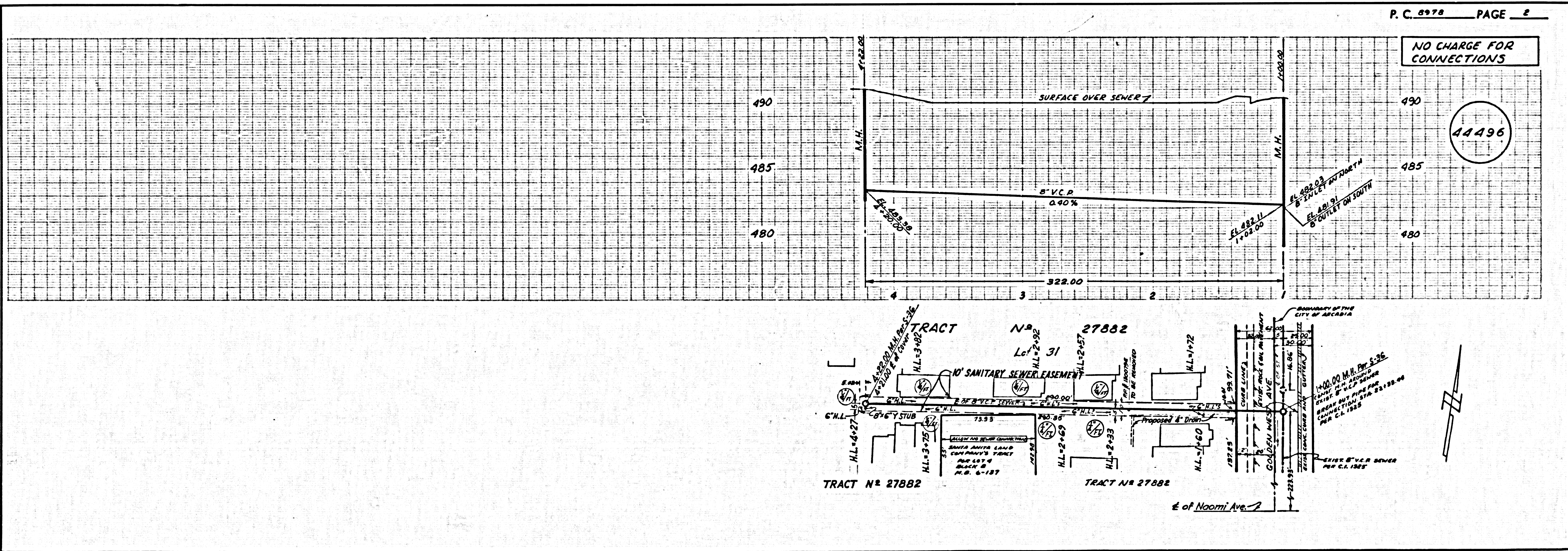
44495

BY: *Allen T. Santini*
 REG. C.E. No. 12842
 E.C.O. INC.
 1420 E. EDINGER AVE.
 SANTA ANA, CALIFORNIA TEL (714) 547-5443

THE FOLLOWING LATEST REVISED STANDARD PLANS ON FILE IN THE OFFICE OF THE COUNTY ENGINEER SHALL APPLY IN THE CONSTRUCTION OF THIS PROJECT:

LOGS	5.1
MINIMUM PUBLIC SAFETY REQUIREMENTS	5.2
BRICK MANHOLE	5.3
STANDARD MANHOLE RING	5.3K
REINFORCING FOR SEWER PIPE	5.31
CRACKING AND REPAIRMENT	5.32
WE OR THE SUPPORT	5.33
ALLOWABLE TRENCH WIDTHS	5.34
LOCKING MANHOLE PLATE AND COVER	5.35
NON-REINFORCED PARALLEL CONCRETE MANHOLE	5.36

COUNTY OF LOS ANGELES, CALIFORNIA
 HARVEY T. BRANDT, COUNTY ENGINEER JOHN D. PARKHURST, CHIEF ENGINEER
 APPROVED *Harvey T. Brandt* 12-5-73 APPROVED *J. D. Parkhurst*
 REGIONAL ENGINEER DISTRICT 12-5-73 OFFICE ENGINEER
 CHECKED *Harvey T. Brandt* 12/5/73 APPROVED BY *Allen T. Santini*
 REG. C.E. NO. 10653
 TEMPLE CITY BLDG. DIST. 5 I.M. 0250.02



NO CHARGE FOR CONNECTIONS

44496