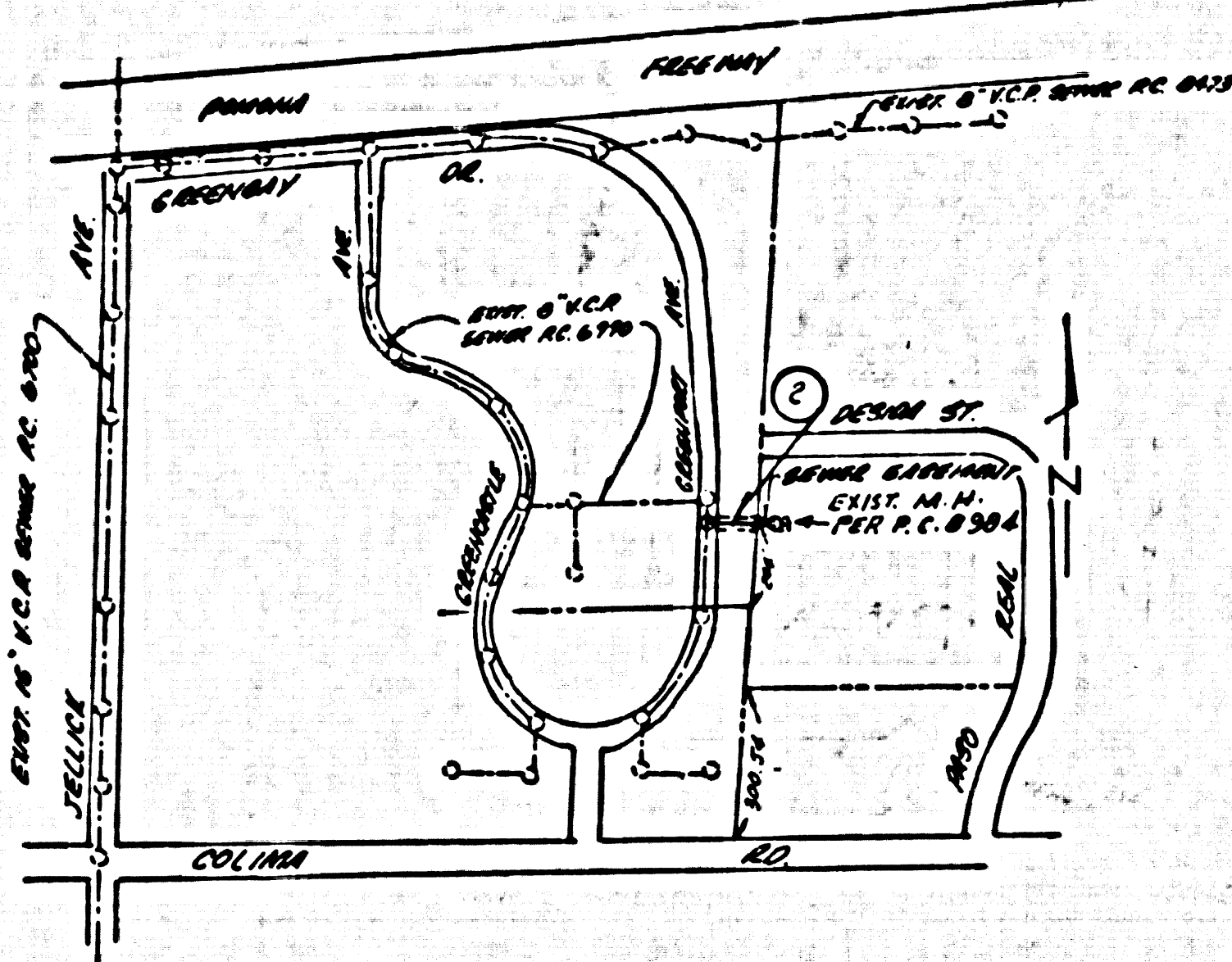


B.M. B.C. 0611 ELEV. 472059
 R.O.M. TO E. CURB 3' TO B.C. AT 55 COR.
 S.W. 1/4 SEC. 10 T. 11 N. R. 10 E. S. 10 E.
 6' WIDE
 OTTERBEIN QUAD. 19 70.



INDEX MAP
 SCALE 1:600
 P.C. 8980

No permission for the disposal of industrial wastes shall be made to be made on these drawings without written permission from the Chief Engineer and General Manager of the County Sanitation Districts.

County Sanitation Districts shall be bonded prior to the following so that any work in connection can be made (Phone 962-8605)

ACCEPTANCE OF THE PROJECT

GENERAL NOTES:

- ELEVATIONS ARE IN FEET ABOVE U.S.C. & G.S. MEAN LEVEL DATUM OF 1929.
- NO REVISIONS ARE TO BE MADE IN THESE PLANS WITHOUT THE APPROVAL OF THE COUNTY ENGINEER.
- NO REPRESENTATIVE OF THE COUNTY ENGINEER WILL SURVEY OR LAY OUT ANY PORTION OF THE WORK.
- GRADES TO WHICH THE IMPROVEMENT IS TO BE CONSTRUCTED ARE SHOWN ON PLANS AND PROFILES. GRADE POINTS FOR TOP OF CURBS, CENTER LINE OF STREETS, OR CENTER LINE OF ALLEYS ARE SHOWN BY CIRCLES ON PROFILES. AT ALL POINTS BETWEEN DESIGNATED POINTS THE GRADE SHALL BE ESTABLISHED SO AS TO CONFORM TO A STRAIGHT LINE DRAWN BETWEEN SAID DESIGNATED POINTS.
- THE PRIVATE ENGINEER SHALL FURNISH THE COUNTY ENGINEER WITH GRADE SHEETS AND STATIONING FOR ALL HOUSE LATERALS AND "Y" OR "T" BRANCHES AND SHALL PROVIDE STAKES FOR THEM AT THEIR PROPER LOCATIONS WITH STATIONING PLAINLY MARKED. ALL HOUSE LATERALS SHALL BE CONSTRUCTED IN A STRAIGHT ALIGNMENT AT RIGHT ANGLES FROM THE MAIN LINE SEWER EXCEPT AS SHOWN ON THE PLANS. HOUSE LATERALS FROM CHIMNEYS SHALL NOT HAVE AN ANGLE OF LESS THAN 45° WITH THE MAIN LINE SEWER. ANY CHANGE IN ALIGNMENT SHALL BE REQUESTED BY WRITING BY THE PRIVATE ENGINEER.
- THE PRIVATE ENGINEER SHALL FURNISH THE HOUSE LATERAL DEPTH AT THE PROPERTY LINE BELOW THE TOP OF CURB ELEVATION FOR EACH HOUSE LATERAL ON THE GRADE SHEET.
- BEFORE WORK CAN BE STARTED, THE CONTRACTOR MUST OBTAIN A PERMIT TO EXCAVATE BY COUNTY STREETS FROM THE L.A. COUNTY ROAD DEPT., DISTRICT OFFICE NO. 1 AND PAY A FEE TO THE COUNTY ENGINEER, REGIONAL OFFICE, TO COVER THE COST OF CONSTRUCTION INSPECTION AND RECORD PLANS.
- IF WORK IS TO BE DONE BY A STATE HIGHWAY, A PERMIT MUST BE OBTAINED FROM THE STATE OF CALIFORNIA, DIVISION OF HIGHWAYS, 120 SOUTH SPRING STREET, LOS ANGELES, CALIFORNIA.
- APPROVAL OF THIS PLAN BY THE COUNTY OF LOS ANGELES DOES NOT CONSTITUTE A REPRESENTATION AS TO THE ACCURACY OF THE LOCATION OF OR THE EXISTENCE OR NON-EXISTENCE OF ANY UNDERGROUND UTILITY PIPES, OR STRUCTURE WITHIN THE LIMITS OF THIS PROJECT. THIS NOTE APPLIES TO ALL PAGES.
- REFER TO SECTION 7-18.4.1 OF THE STANDARD SPECIFICATIONS, REGARDING SAFETY ORDERS.

PROFILE, ALIGNMENT AND GRADE OF
SANITARY SEWERS PAGE 1

TO BE CONSTRUCTED FOR
**ROWLAND HEIGHTS MOBILE
 ESTATES**

PRIVATE CONTRACT NO. 8980

W.S. 30-04
 1 SHEET, 2 PAGES
 SCALE: VERT. 1"=4'
 HORIZ. 1"=40' SEPT. 1973
 PREPARED IN THE OFFICES OF
SHELTON & ASSOCIATES

BY: *J. J. McBride*
 REG. C. E. No. 12801

THE FOLLOWING LATEST REVISED STANDARD PLANS ON FILE IN THE OFFICE OF THE COUNTY ENGINEER SHALL APPLY IN THE CONSTRUCTION OF THIS PROJECT.

| | |
|--|------|
| MINIMUM PUBLIC SAFETY REQUIREMENTS | 6-4 |
| BRICK MANHOLE | 6-4 |
| STANDARD MANHOLE STD | 6-17 |
| REGULATIONS FOR SEWER PIPE | 6-20 |
| CALLING AND ENCASING | 6-20 |
| WYS OR THE SUPPORT | 6-20 |
| ALLOWABLE TRENCH WIDTHS | 6-20 |
| LOCKING MANHOLE FRAME AND COVER | 6-20 |
| NON-BRICKWORK PRECAST CONCRETE MANHOLE | 6-20 |
| SPECIAL FORMS FOR MANHOLE | 6-20 |

44310

CONSTRUCTION NOTES:

- WORK SHALL BE CONSTRUCTED ACCORDING TO THE STANDARD SPECIFICATIONS FOR PUBLIC WORKS CONSTRUCTION (1978 EDITION) WITH *SEWER* SUPPLEMENTS AND COUNTY ENGINEER SPECIAL PROVISIONS FOR THE CONSTRUCTION OF SANITARY SEWERS DATED *APRIL 22, 1974*. AND SHALL BE PROTECTED ONLY IN THE PRESENCE OF THE COUNTY ENGINEER.
- THE CONTRACTOR SHALL NOTIFY THE CONSTRUCTION DIVISION BY TELEPHONE, ALDISON 9-674, EXT. 8151, AT LEAST TWENTY-FOUR HOURS BEFORE STARTING ANY WORK UNDER THIS CONTRACT.
- HOUSE LATERALS TO BE CONSTRUCTED WITH INVERTS AT PROPERTY LINE 4 FEET BELOW CURB GRADE EXCEPT AS NOTED.
- WYS OR THE BRANCHES MAY BE USED FOR CONNECTIONS TO MAINLINE SEWERS EXCEPT AS NOTED.
- ALL STRUCTURES SHALL BE EITHER BRICK MANHOLES PER 6-4 OR PRECAST CONCRETE MANHOLES PER 6-20, EXCEPT AS NOTED.
- PROVIDE STAKES ON THE PROPERTY LINE OR PROPERTY LINES PRODUCED AT RIGHT ANGLES TO THE SEWER LINE AT THE CENTER LINE OF EACH MANHOLE.
- MANHOLE JOBS IN UNIMPROVED RIGHTS OF WAY TO BE SIX INCHES ABOVE FINISHED GRADE.
- VITRIFIED CLAY PIPE JOINTS SHALL BE TYPE "B", "T", OR "D" PER STANDARD SPECIFICATIONS SECTION 306-2.
- IF A POWER POLE IS WITHIN THREE FEET OF THE SEWER, THE SEWER SHALL BE ENCASED, PER 6-23, CALL 2 TWO FEET ON EACH SIDE FROM THE POINT OF INTERFERENCE.
- IF DURING THE COURSE OF CONSTRUCTION IT IS DETERMINED THAT THERE IS LESS THAN FOUR FEET OF COVER OVER THE TOP OF A MAIN LINE OR HOUSE LATERAL V.C.P. SEWER WHICH IS NOT INDICATED ON THE PLANS, THE PIPE SHALL BE ENCASED PER 6-23, CASE II UNLESS OTHERWISE APPROVED BY THE COUNTY ENGINEER.
- ALL JOINTS BETWEEN CLAY PIPE AND VITRIFIED CLAY PIPE SHALL BE MADE WITH A RUBBER SLEEVE JOINT, TYPE "C" OR "B", WITH BUSHING IF NECESSARY PER STANDARD SPECIFICATIONS, SECTION 306-2.
- SEWERS TO BE TESTED FOR LEAKAGE PER SECTION 306-3.2.7 OF THE STANDARD SPECIFICATIONS AND SPECIAL PROVISIONS.
- REPAIR/BACKFILL ALL TRENCHES WITHIN PAVED AREAS TO MEET L.A. COUNTY ROAD DEPT. OR CALIFORNIA STATE HIGHWAY REQUIREMENTS IN ACCORDANCE WITH PERMITS.

COUNTY OF LOS ANGELES, CALIFORNIA
 HARVEY T. BRAULT, COUNTY ENGINEER JOHN D. PARKHURST, CHIEF ENGINEER

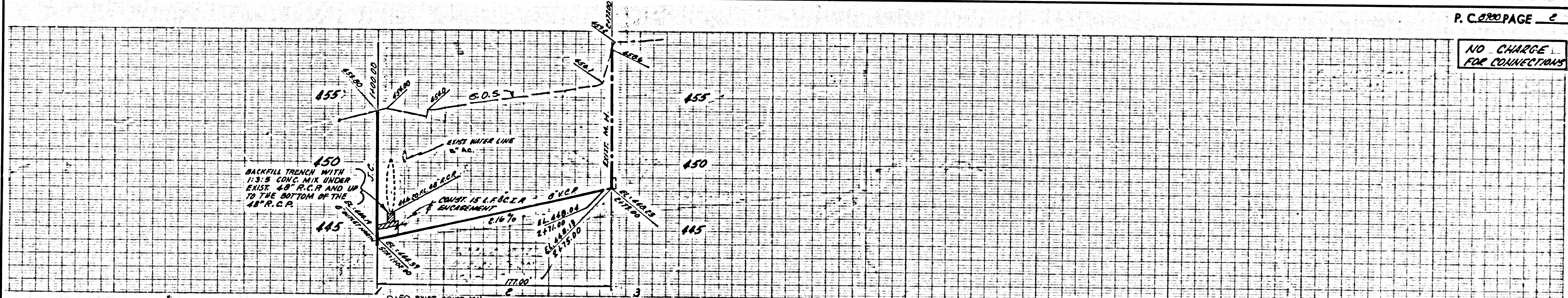
APPROVED *E. J. Harding* APPROVED *J. D. Parkhurst*
 COUNTY ENGINEER CHIEF ENGINEER

CHECKED *Alan E. Howard* DATE 3 Oct 73
 REG. C. E. NO. 19156

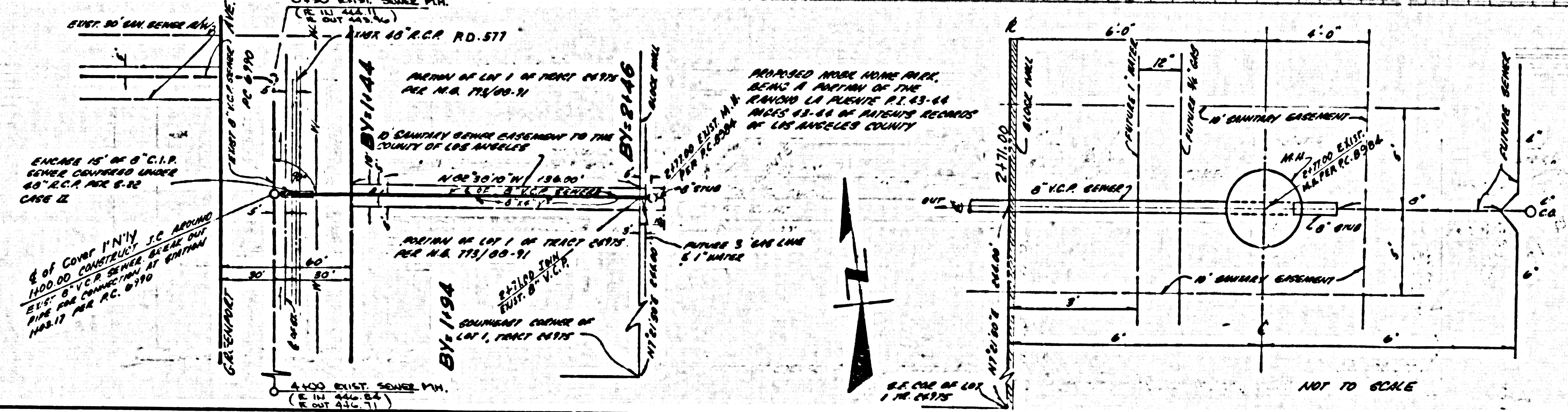
LA PLUMBE BLDG. DIST. 20 I.N. 0978.00

P.C. 8980 PAGE 2

NO CHARGE FOR CONNECTIONS



NOTE: EXISTING SEWER PIPES ELEVATIONS HAVE BEEN VERIFIED IN THE FIELD.



44311