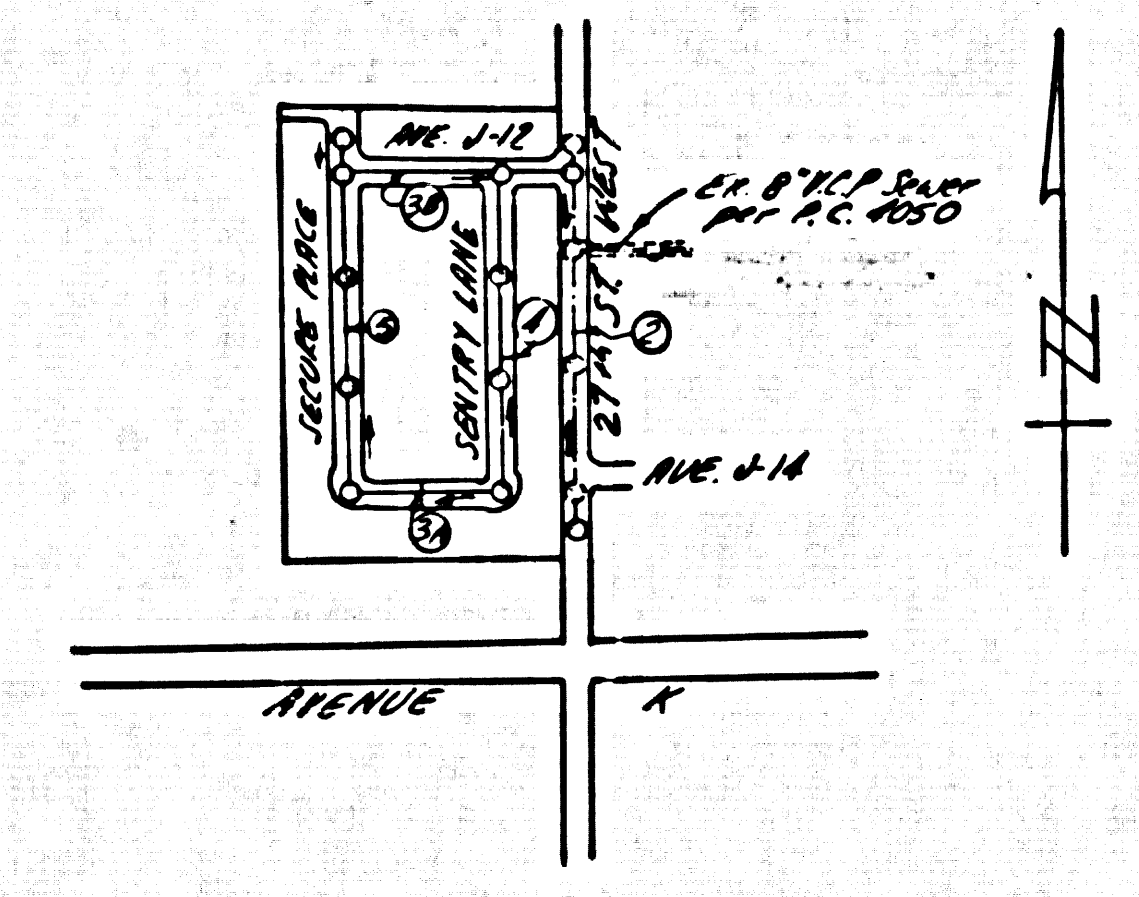


B.M. 21.2221 ELEV. 2387.143
 C.S. Mon. (S. edge) in wall 18" dia @ E
 12A Ave. N. 125' 14" S.W. MKD.
 (N.C. 20-28774 R. 12.14)
 LANCASTER QUAD. 19.22



INDEX MAP
 SCALE: 1" = 60'
 P.C. 8997

CONSTRUCTED IN
TRACT No 31697
PRIVATE CONTRACT NO. 8997

W.S. 71
 3 SHEETS, 5 PAGES
 SCALE: VERT. 1" = 4'
 HORIZ. 1" = 40'
 SEPT. 1973
 PREPARED IN THE OFFICES OF
SCHOER ENGINEERS
 13608 VICTORY BLVD. VAN NUYS, CAL.
 BY: *[Signature]*
 REG. C. E. No. 18752

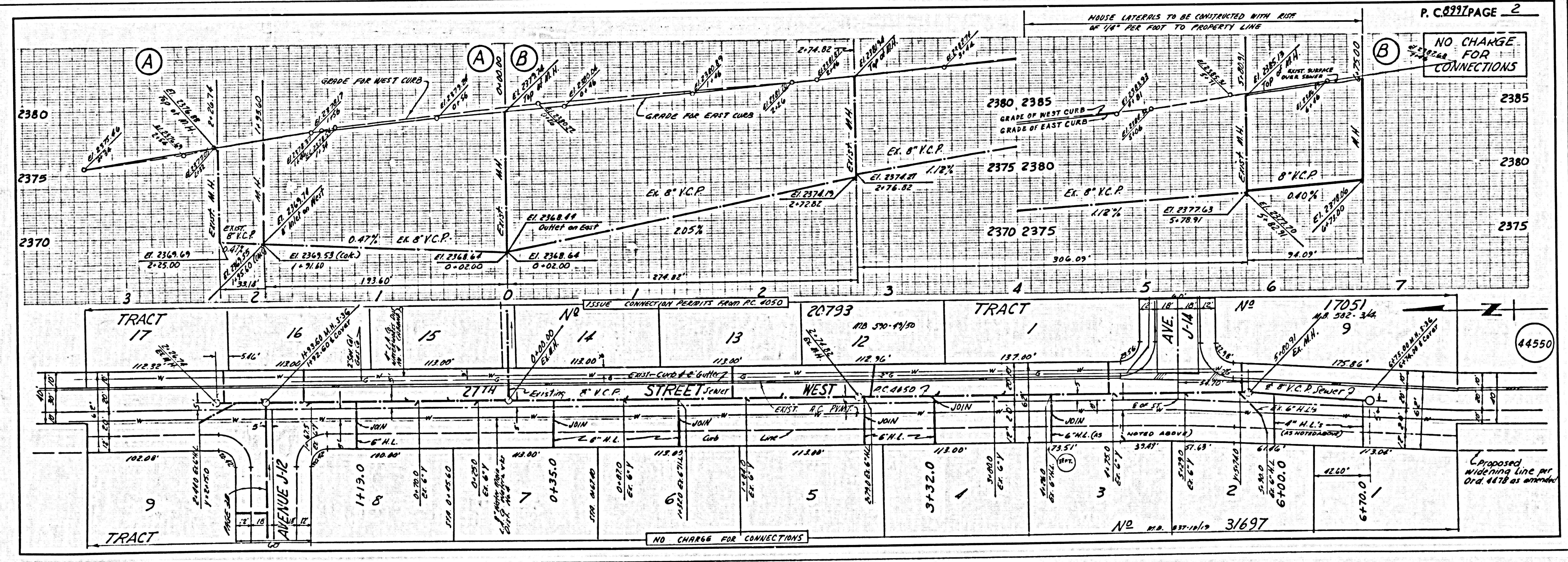
- GENERAL NOTES:**
- ELEVATIONS ARE IN FEET ABOVE M.S.L. @ S.E.A. SEA LEVEL DATUM OF 1929.
 - NO IMPROVEMENTS SHALL BE MADE IN THESE PLANS WITHOUT THE APPROVAL OF THE COUNTY ENGINEER.
 - NO REPRESENTATIVE OF THE COUNTY ENGINEER WILL SURVEY OR LAY OUT ANY PORTION OF THE WORK.
 - GRADES TO WHICH THIS IMPROVEMENT IS TO BE CONSTRUCTED ARE SHOWN ON PLANS AND PROFILES. GRADE POINTS FOR TOP OF CURB, CENTER LINE OF STREET, OR CENTER LINE OF ALLEYS ARE SHOWN BY CIRCLES ON HOUSES. AT ALL POINTS BETWEEN DESIGNATED POINTS THE GRADE SHALL BE ESTABLISHED SO AS TO CONFORM TO A STRAIGHT LINE DRAWN BETWEEN SAID DESIGNATED POINTS.
 - THE PRIVATE ENGINEER SHALL FURNISH THE COUNTY ENGINEER WITH GRADE SHEETS AND STATIONING FOR ALL HOUSE LATERALS AND 10" OR 12" MAINLINES AND SHALL PROVIDE STAKES FOR THEM AT THEIR PROPER LOCATION WITH STATIONING PLAINLY MARKED. ALL HOUSE LATERALS SHALL BE CONSTRUCTED IN A STRAIGHT ALIGNMENT AT RIGHT ANGLES FROM THE MAIN LINE SEWER EXCEPT AS SHOWN ON THE PLANS. HOUSE LATERALS FROM CHIMNEYS SHALL NOT HAVE AN ANGLE OF LESS THAN 45° WITH THE MAIN LINE SEWER. ANY CHANGE IN ALIGNMENT SHALL BE REQUESTED BY WRITING BY THE PRIVATE ENGINEER.
 - THE PRIVATE ENGINEER SHALL FURNISH THE HOUSE LATERAL DEPTH AT THE PROPERTY LINE BELOW THE TOP OF CURB ELEVATION FOR EACH HOUSE LATERAL ON THE GRADE SHEET.
 - BEFORE WORK CAN BE STARTED, THE CONTRACTOR MUST OBTAIN A PERMIT TO EXCAVATE IN COUNTY STREETS FROM THE L. A. COUNTY ROAD DEPT., DISTRICT OFFICE NO. 5 AND PAY A FEE TO THE COUNTY ENGINEER, 950 S. IMPERIAL, VAN NUYS, CALIF. OR **ANTELOPE VALLEY** REGIONAL OFFICE, TO COVER THE COST OF CONSTRUCTION INSPECTION AND RECORD PLANS.
 - IF WORK IS TO BE DONE IN A STATE HIGHWAY, A PERMIT MUST BE OBTAINED FROM THE STATE OF CALIFORNIA, DIVISION OF HIGHWAYS, 120 SOUTH SPRING STREET, LOS ANGELES, CALIFORNIA.
 - APPROVAL OF THIS PLAN BY THE COUNTY OF LOS ANGELES DOES NOT CONSTITUTE A REPRESENTATION AS TO THE ACCURACY OF THE LOCATION OF OR THE EXISTENCE OR NON-EXISTENCE OF ANY UNDERGROUND UTILITY PIPE, OR STRUCTURE WITHIN THE LIMITS OF THIS PROJECT. THIS NOTE APPLIES TO ALL PAGES.
 - REFER TO SECTION 7.18.4.1 OF THE STANDARD SPECIFICATIONS, REGARDING SAFETY ORDERS.
- County Sanitation Districts shall be notified prior to the following so that required inspection can be made (Phone 337-1025 x 638-1161)
- NO CONNECTIONS FOR THE DISPOSAL OF INDUSTRIAL WASTES SHALL BE MADE TO SEWERS EXCEPT ON THOSE DESIGNATED WITHOUT WRITTEN PERMISSION FROM THE Chief Engineer and General Manager of the County Sanitation Districts.

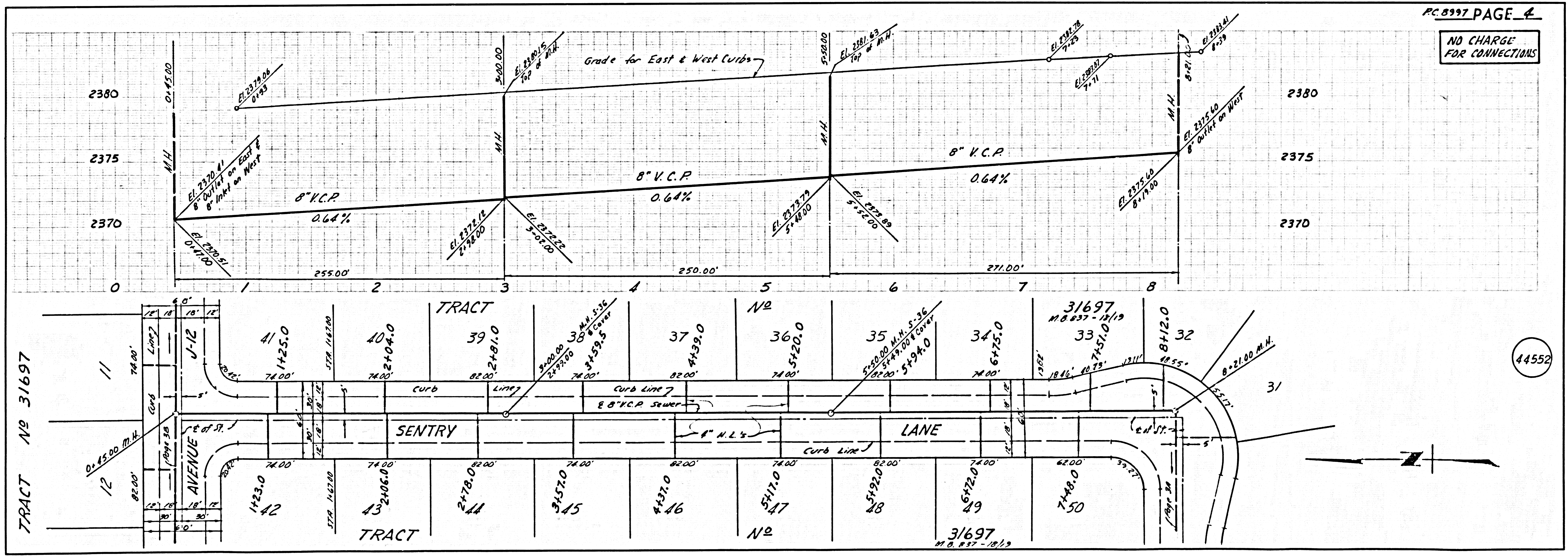
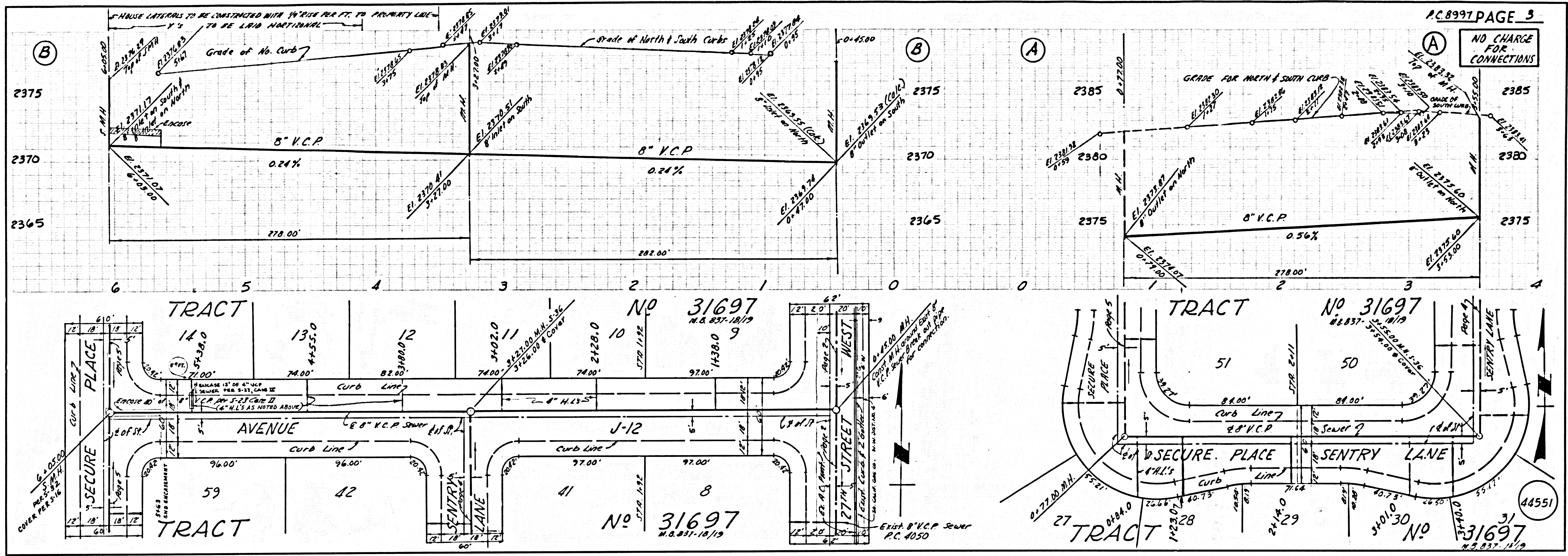
- CONSTRUCTION NOTES:**
- WORK SHALL BE CONSTRUCTED ACCORDING TO THE STANDARD SPECIFICATIONS FOR PUBLIC WORKS CONSTRUCTION (1970 EDITION) WITH 7/1/72 SUPPLEMENTS AND COUNTY ENGINEER SPECIAL PROVISIONS FOR THE CONSTRUCTION OF SANITARY SEWERS DATED 12/22/72 AND SHALL BE PROSECUTED ONLY IN THE PRESENCE OF THE COUNTY ENGINEER.
 - THE CONTRACTOR SHALL NOTIFY THE CONSTRUCTION DIVISION BY TELEPHONE, 274-7223, AT LEAST TWENTY-FOUR HOURS BEFORE STARTING ANY WORK UNDER THIS CONTRACT.
 - HOUSE LATERALS TO BE CONSTRUCTED WITH INVERTS AT PROPERTY LINE 6 FEET BELOW CURB GRADE EXCEPT AS NOTED.
 - PIPE OR FITTINGS SHALL BE USED FOR CONNECTIONS TO MAINLINE SEWERS EXCEPT AS NOTED.
 - ALL STRUCTURES SHALL BE EITHER BRICK MANHOLES PER 2.26 OR PRECAST CONCRETE MANHOLES PER 2.26, EXCEPT AS NOTED.
 - PROVIDE STAKES ON THE PROPERTY LINE OR PROPERTY LINES PRODUCED AT RIGHT ANGLES TO THE SEWER LINE AT THE CENTER LINE OF EACH MANHOLE.
 - MANHOLE TOPS IN UNIMPROVED AREAS OF WAY TO BE SIX INCHES ABOVE FINISHED GRADE.
 - VERTICAL CURVE JOINTS SHALL BE TYPE "C", "P", OR "M" PER STANDARD SPECIFICATIONS SECTION 200-2.
 - IF A POWER POLE IS WITHIN THREE FEET OF THE SEWER, THE SEWER SHALL BE ENCASED, PER 2.23, CASE II, TWO FEET ON EACH SIDE FROM THE POINT OF INTERFERENCE.
 - IF DURING THE COURSE OF CONSTRUCTION IT IS DETERMINED THAT THERE IS LESS THAN FOUR FEET OF COVER OVER THE TOP OF A MAIN LINE OR HOUSE LATERAL V.C.P. SEWER WHICH IS NOT INDICATED ON THE PLANS, THE PIPE SHALL BE ENCASED PER 2.23, CASE II UNLESS OTHERWISE APPROVED BY THE COUNTY ENGINEER.
 - ALL JOINTS BETWEEN CAST IRON PIPE AND VITRIFIED CLAY PIPE SHALL BE MADE WITH A RUBBER SLEEVE JOINT, TYPE "C" OR "D", WITH BUSHING IF NECESSARY PER STANDARD SPECIFICATIONS SECTION 200-2.
 - SEWERS TO BE TESTED FOR LEAKAGE PER SECTION 206-2.2.7 OF THE STANDARD SPECIFICATIONS AND SPECIAL PROVISIONS.
 - RESURFACE ALL TRENCHES WITHIN PAVED AREAS TO MEET L.A. COUNTY ROAD DEPT. OR CALIFORNIA STATE HIGHWAY REQUIREMENTS IN ACCORDANCE WITH PERMITS.
 - FULL COMPLIANCE WITH SECTION 206-1.3.3 OF THE SPECIAL PROVISIONS WILL BE REQUIRED FOR EACH AND EVERY CONTRACTOR TO BE AWARE OF THE REQUIREMENTS OF THE COUNTY ENGINEER AND TO OBTAIN A PERMIT FROM THE INSURANCE OR A CERTIFICATE OF LIABILITY INSURANCE.

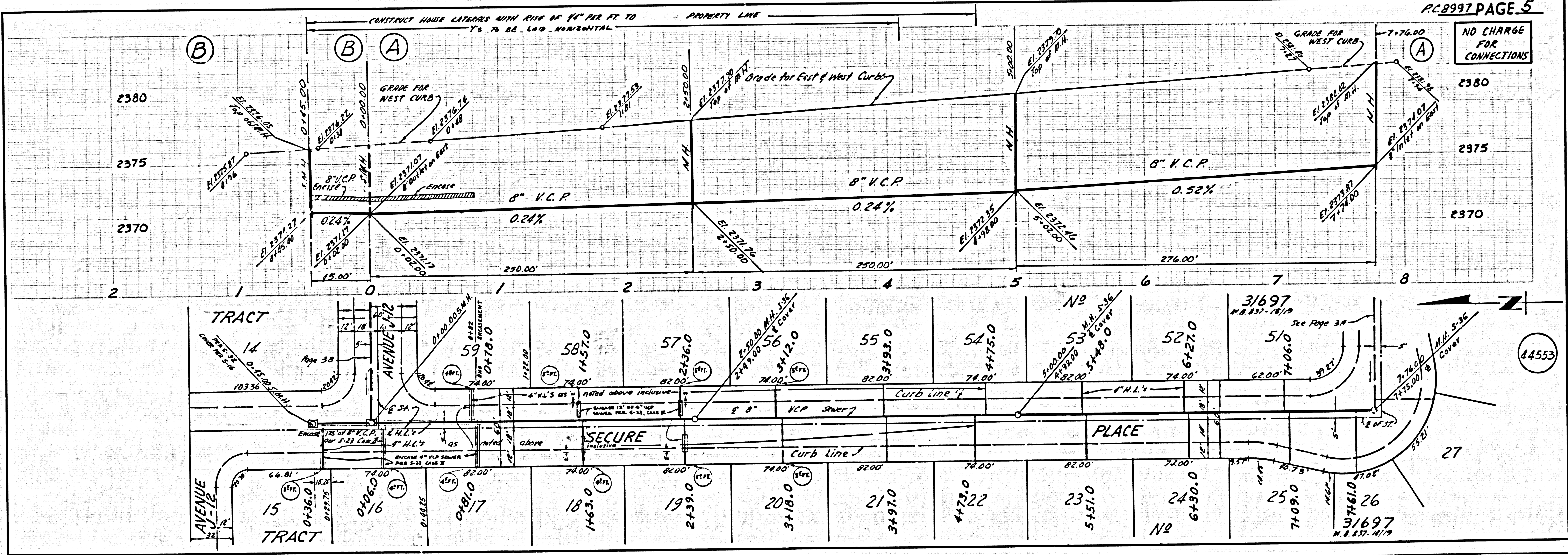
THE FOLLOWING LATEST REVISED STANDARD PLANS ON FILE IN THE OFFICE OF THE COUNTY ENGINEER SHALL APPLY IN THE CONSTRUCTION OF THIS PROJECT.

LEGEND	2.1
MINIMUM PUBLIC SAFETY REQUIREMENTS	2.2
BRICK MANHOLE	2.3
STANDARD MANHOLE STEP	2.4
BEDDING FOR SEWER PIPE	2.5
CRADLING AND ENCASEMENT	2.6
PIPE ON THE SUPPORT	2.7
ALLOWABLE TRENCH WIDTHS	2.8
LOADING MANHOLE FRAMES AND COVERS	2.9
NON-REINFORCED PRECAST CONCRETE MANHOLE	2.10
REINFORCED PRECAST CONCRETE MANHOLE	2.11
RECYCLED POLYMER MANHOLE	2.12
PRECAST CONCRETE SHALLOW MANHOLE	2.13

COUNTY OF LOS ANGELES, CALIFORNIA
 HARVEY T. BRANDT, COUNTY ENGINEER
 JOHN D. PARKHURST, CHIEF ENGINEER
 APPROVED *[Signature]* 11/73
 APPROVED *[Signature]* 11/73
 CHECKED *[Signature]* 11/73
 NO. C.E. NO. 16742
 LANCASTER BLDG. DIST. 8







NO CHARGE FOR CONNECTIONS

