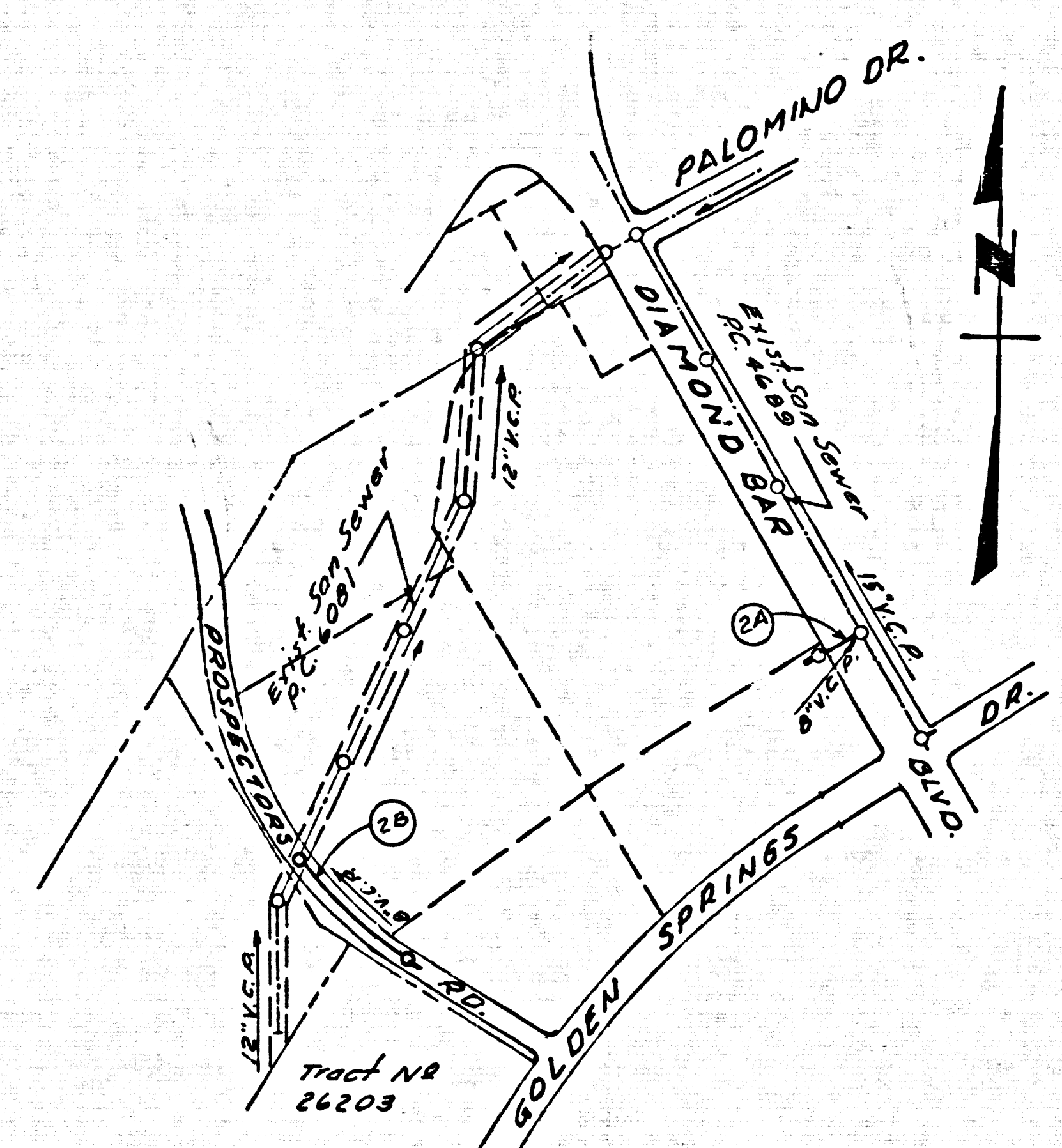


B.M. BS 2127 ELEV. 768.214  
 R.D.B.M. TAB W. CO. 2 F.L.S. S.C.R. P.S.W.  
 COR. DIAMOND BAR BLVD. & GOLDEN  
 SPRINGS DR. 69 F.L.S. 407 W. C.L. INT.  
 OTTERBEIN QUAD. 1970



INDEX MAP  
 SCALE 1" = 400'  
 P.C. 8998

18. PRIOR TO ISSUANCE OF THE REQUIRED SEWER CONSTRUCTION PERMIT BY THE COUNTY ENGINEER, THE CONTRACTOR SHALL OBTAIN A PERMIT TO EXCAVATE FROM THE STATE OF CALIFORNIA, DIVISION OF INDUSTRIAL SAFETY.

DOUBLE SCALE  
 SAN DIMAS BLDG. DIST. NO. 10

PROFILE ALIGNMENT AND GRADE OF P.C. 8998  
 SANITARY SEWERS PAGE 1  
 CONSTRUCTED IN

PARCEL MAP NO. 4288  
 PRIVATE CONTRACT NO. 8998

W.S. 39 - C2  
 1 SHEET, 2 PAGES  
 SCALE: VERT. 1" = 4' HORIZ. 1" = 40'  
 SEPTEMBER, 1973  
 PREPARED IN THE OFFICES OF  
 TRI STATE ENGINEERING COMPANY  
 615 SOUTH RAYMOND AVENUE, FULLERTON, CALIF. 92631  
 BY: Robert A. Baker  
 REG. C. E. NO. 18618  
 FOR LEGEND SEE PLAN NO. S-1

- NOTES:
1. PROVIDE STAKES ON THE PROPERTY LINE OR PROPERTY LINES PRODUCED AT RIGHT ANGLES TO THE SEWER LINE AT THE CENTER LINE OF EACH MANHOLE.
  2. NO REPRESENTATIVE OF THE COUNTY ENGINEER WILL SURVEY OR LAY OUT ANY PORTION OF THE WORK.
  3. THE PRIVATE ENGINEER SHALL FURNISH THE COUNTY ENGINEER WITH GRADE SHEETS AND STATIONING FOR ALL HOUSE LATERALS AND "T" BRANCHES AND SHALL PROVIDE STAKES FOR THEM AT THEIR PROPER LOCATIONS WITH STATIONING PLAINLY MARKED. ALL HOUSE LATERALS SHALL BE CONSTRUCTED IN A STRAIGHT ALIGNMENT AT RIGHT ANGLES FROM THE MAIN LINE SEWER EXCEPT AS SHOWN ON THE PLANS. HOUSE LATERALS FROM CHIMNEYS SHALL NOT HAVE AN ANGLE OF LESS THAN 45° WITH THE MAIN LINE SEWER. ANY CHANGE IN ALIGNMENT SHALL BE REQUESTED IN WRITING BY THE PRIVATE ENGINEER.
  4. THE PRIVATE ENGINEER SHALL FURNISH THE HOUSE LATERAL DEPTH AT THE PROPERTY LINE BELOW THE TOP OF CURB ELEVATION FOR EACH HOUSE LATERAL ON THE GRADE SHEET.
  5. NO REVISIONS SHALL BE MADE IN THESE PLANS WITHOUT THE APPROVAL OF THE COUNTY ENGINEER.
  6. THE CONTRACTOR SHALL NOTIFY THE PUBLIC WORKS DIVISION BY TELEPHONE, 974-7283, AT LEAST TWENTY-FOUR HOURS BEFORE STARTING ANY WORK UNDER THIS CONTRACT.
  7. ALL STRUCTURES SHALL BE EITHER PRECAST CONCRETE MANHOLES PER S-26 EXCEPT AS NOTED, OR CAST-IN-PLACE CONCRETE MANHOLES PER S-26 EXCEPT AS NOTED.
  8. HOSE OR TEE BRANCHES MAY BE USED FOR CONNECTIONS TO MAIN LINE SEWER EXCEPT AS NOTED.
  9. MANHOLE TOPS IN UNIMPROVED AREAS TO BE SIX INCHES ABOVE FINISHED GRADE.
  10. VITRIFIED CLAY PIPE JOINTS SHALL BE TYPE "D" OR "D" WITH ANGLING IF NECESSARY PER STD. SPECS. SEC. 108-2.
  11. REFER TO SECTION 7-10, 8-1 OF THE STANDARD SPECS. REGARDING SAFETY ORDERS.
  12. IF A POWER POLE IS WITHIN THREE FEET OF THE SEWER, THE SEWER SHALL BE ENCASED, PER S-23, TWO FEET ON EACH SIDE FROM THE POINT OF INTERFERENCE.
  13. IF DURING THE COURSE OF CONSTRUCTION IT IS DETERMINED THAT THERE IS LESS THAN FOUR FEET OF COVER OVER THE TOP OF A MAIN LINE OR HOUSE LATERAL V.C.P. SEWER WHICH IS NOT INDICATED ON THE PLANS, THE PIPE SHALL BE ENCASED PER S-23, UNLESS OTHERWISE APPROVED BY THE COUNTY ENGINEER.
  14. HOUSE LATERALS TO BE CONSTRUCTED WITH INVERTS AT PROPERTY LINE 6 FEET BELOW CURB GRADE EXCEPT AS NOTED.
  15. RESURFACE ALL TRENCHES WITHIN PAVED AREAS TO MEET L.A. COUNTY ROAD DEPT. OR CALIFORNIA STATE HIGHWAY REQUIREMENTS IN ACCORDANCE WITH PERMITS.
  16. SEWERS TO BE TESTED FOR LEAKAGE PER SECTIONS 304-2.37 OF STD. SPECS. AND SPECIAL PROVISIONS.
  17. ALL JOINTS BETWEEN CAST IRON PIPE AND VITRIFIED CLAY PIPE SHALL BE MADE WITH RUBBER SLEEVE JOINTS, TYPE "C" OR "D" (WITH ANGLING IF NECESSARY) PER STD. SPECS. SEC. 108-2.
  18. FULL COMPLIANCE WITH SECTION 304-2.3 OF THE STANDARD PROVISIONS WILL BE REQUIRED FOR EACH TOLL IN STREETS. CERTIFICATION OF BACKFILL COMPACTION AND SAND EQUIVALENTS BY A QUALIFIED REGISTERED TESTING LABORATORY SHALL BE PROVIDED BY THE PERMITTEE PRIOR TO THE ISSUANCE OF A CERTIFICATE OF PARTIAL ACCEPTANCE.

County Sanitation Districts shall be notified prior to the following so that required inspection can be made (Phone 837-4025 & 838-1181)

ACCEPTANCE OF THE PROJECT

No connections for the disposal of industrial wastes shall be made to sewers shown on these drawings without written permission from the Chief Engineer and General Manager of the County Sanitation Districts.

NOTICE TO CONTRACTOR

The existence and location of any underground utility lines or structures shown on these plans are obtained by a search of the available records. To the best of my knowledge there are no existing utilities except as shown on these plans. The contractor is required to take due precautionary measures to protect the utility lines shown and any other lines not of record or not shown on these plans.

Robert A. Baker  
 REG. C.E. NO. 18618

NOTE:  
 GRADES TO WHICH THIS IMPROVEMENT IS TO BE CONSTRUCTED ARE SHOWN ON PLANS AND PROFILES. GRADE POINTS FOR TOP OF CURBS, CENTER LINE OF STREETS, OR CENTER LINE OF ALLEYS ARE SHOWN BY CIRCLES ON PROFILES. AT ALL POINTS BETWEEN DESIGNATED POINTS THE GRADE SHALL BE ESTABLISHED SO AS TO CONFORM TO A STRAIGHT LINE DRAWN BETWEEN SAID DESIGNATED POINTS. ELEVATIONS ARE IN FEET ABOVE U.S.C. & G.S. SEA LEVEL DATUM OF 1929.  
 THIS DRAWING AND THE DATA HEREON ARE HEREBY MADE A PART OF THE SPECIFICATIONS.  
 WORK SHALL BE CONSTRUCTED ACCORDING TO STANDARD SPECIFICATIONS FOR PUBLIC WORKS CONTRACTS (1970 EDITION WITH 1971 & 1972 SUPPLEMENTS) SPECIAL PROVISIONS FOR THE COUNTY OF SAN DIMAS DATED 6/1/72 AS PROVIDED IN THE PRESSURE OF THE COUNTY OF SAN DIMAS. THE CONTRACTOR MUST OBTAIN A PERMIT TO EXCAVATE IN COUNTY STREETS FROM THE L.A. COUNTY ROAD DIST. DISTRICT OFFICE NO. 1, AND PAY A FEE TO THE COUNTY ENGINEER, 601 EAST BONITA AVENUE, SAN DIMAS, CALIF. 91761. REGIONAL OFFICE, SUFFICIENT TO COVER THE COST OF CONSTRUCTION INSPECTION AND RECORD PLANS.  
 APPROVAL OF THIS PLAN BY THE COUNTY OF LOS ANGELES DOES NOT CONSTITUTE A REPRESENTATION AS TO THE ACCURACY OF THE LOCATION OF OR THE EXISTENCE OR NON-EXISTENCE OF ANY UNDERGROUND UTILITY PIPE, OR STRUCTURE WITHIN THE LIMITS OF THIS PROJECT. THIS NOTE APPLIES TO ALL PAGES.  
 IF WORK IS TO BE DONE IN A STATE HIGHWAY, A PERMIT MUST BE OBTAINED FROM THE STATE OF CALIFORNIA, DIVISION OF HIGHWAYS, 120 SOUTH SPRING STREET, LOS ANGELES, CALIFORNIA.

COUNTY OF LOS ANGELES, CALIFORNIA  
 HARVEY T. BRANDT, COUNTY ENGINEER J. D. PARKHURST, CHIEF ENGINEER  
 CO. SANITATION NO. 21  
 APPROVED BY: B. J. Morlock, SANITATION REGIONAL ENGINEER APPROVED BY: J. D. Parkhurst, OFFICE ENGINEER  
 CHECKED BY: Robert A. Baker, DATE: 9/14/73 REG. C.E. NO. 18618

J.N. 0250.05

