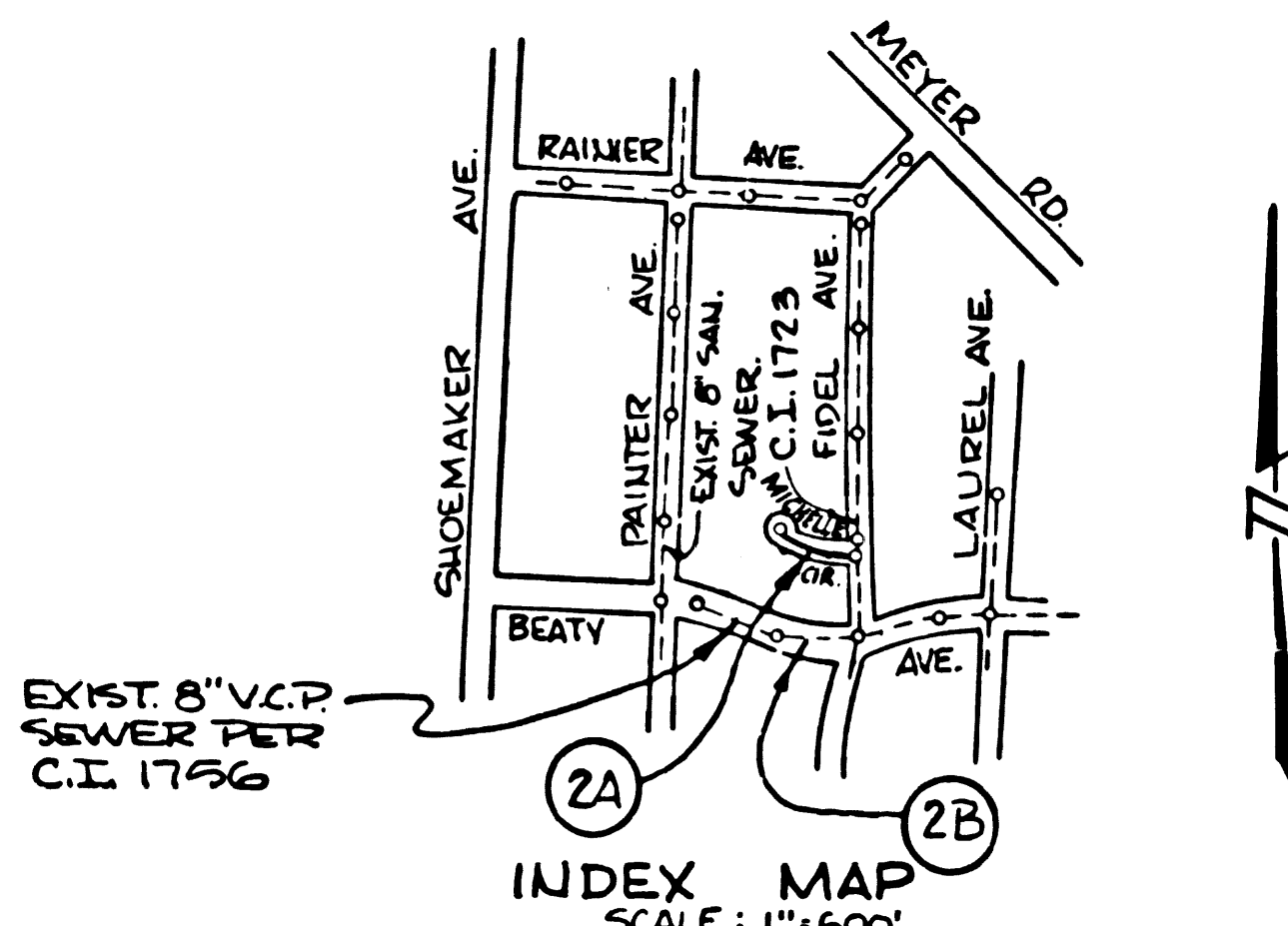


B.M. BY 4312 ELEV. 158.898  
 L+6PK NR SE COR CONC WK 60 FT #  
 W CARMENITA RD+ 81 FT # N/C/L  
 BEATY AVE NR SE COR OF BLDG.  
 NORWALK QUAD. 1970



INDEX MAP  
 SCALE: 1"=600'

REVISION  
 CHANGED ALIGNMENT OF 8" V.C.P.  
 SEWER FROM STATION 0+44.38  
 TO STATION 3+50.37  
 R.E.F. 18082 12-2-75

NO CONNECTION FOR THE DISPOSAL OF INDUSTRIAL WASTES  
 SHALL BE MADE TO SEWER'S SHOWN ON THESE DRAWINGS UNLESS  
 A PERMIT FOR INDUSTRIAL WASTE WATER DISCHARGE HAS BEEN  
 ISSUED BY THE SANITATION DISTRICTS FOR SAID CONNECTION.  
 COUNTY SANITATION DISTRICTS SHALL BE NOTIFIED 24 HOURS PRIOR  
 TO THE COMMENCING OF ANY REQUIRED INSPECTION CAN BE MADE.  
 (PHONE 462-6883 - 638-1161)

ACCEPTANCE OF THE PROJECT

GENERAL NOTES:

- ELEVATIONS ARE IN FEET ABOVE U.S.C. & G.S. SEA LEVEL DATUM OF 1929.
- NO REVISIONS SHALL BE MADE IN THESE PLANS WITHOUT THE APPROVAL OF THE COUNTY ENGINEER.
- NO REPRESENTATIVE OF THE COUNTY ENGINEER WILL SURVEY OR LAY OUT ANY PORTION OF THE WORK.
- GRADES TO WHICH THIS IMPROVEMENT IS TO BE CONSTRUCTED ARE SHOWN ON PLANS AND PROFILES. GRADE POINTS FOR TOP OF CURBS, CENTER LINE OF STREETS, OR CENTER LINE OF ALLEYS ARE SHOWN ON PROFILES. AT ALL POINTS BETWEEN DESIGNATED POINTS THE GRADE SHALL BE ESTABLISHED SO AS TO CONFORM TO A STRAIGHT LINE DRAWN BETWEEN SAID DESIGNATED POINTS.
- THE PRIVATE ENGINEER SHALL FURNISH THE COUNTY ENGINEER WITH GRADE SHEETS AND STATIONING FOR ALL HOUSE LATERALS AND "T" OR "Y" BRANCHES AND SHALL PROVIDE STAKES FOR THEM AT THEIR PROPER LOCATIONS WITH STATIONING PLAINLY MARKED. ALL HOUSE LATERALS SHALL BE CONSTRUCTED IN A STRAIGHT ALIGNMENT AT RIGHT ANGLES FROM THE MAIN LINE SEWER EXCEPT AS SHOWN ON THE PLANS. HOUSE LATERALS FROM CHIMNEYS SHALL NOT HAVE AN ANGLE OF LESS THAN 45° WITH THE MAIN LINE SEWER. ANY CHANGE IN ALIGNMENT SHALL BE REQUESTED IN WRITING BY THE PRIVATE ENGINEER.
- THE PRIVATE ENGINEER SHALL FURNISH THE HOUSE LATERAL BOTH AT THE PROPERTY LINE BELOW THE TOP OF CURB ELEVATION FOR EACH HOUSE LATERAL ON THE GRADE SHEET.
- BEFORE WORK CAN BE STARTED, THE CONTRACTOR MUST OBTAIN A PERMIT TO EXCAVATE IN COUNTY STREETS FROM THE L.A. COUNTY ROAD DEPT., DISTRICT OFFICE NO. 5, AND PAY A FEE TO THE ROAD DEPT. (PHONE 462-6883-6884) AND A PERMIT TO EXCAVATE IN CITY STREETS FROM THE REGIONAL OFFICE TO COVER THE COST OF CONSTRUCTION INSPECTION AND RECORD PLANS.
- IF WORK IS TO BE DONE IN A STATE HIGHWAY, A PERMIT MUST BE OBTAINED FROM THE STATE OF CALIFORNIA, DIVISION OF HIGHWAYS, THE SOUTH SPRING STREET, LOS ANGELES, CALIFORNIA.
- APPROVAL OF THIS PLAN BY THE COUNTY OF LOS ANGELES DOES NOT CONSTITUTE A REPRESENTATION AS TO THE ACCURACY OF THE LOCATION OF OR THE EXISTENCE OR NON-EXISTENCE OF ANY UNDERGROUND UTILITY PIPE, OR STRUCTURE WITHIN THE LIMITS OF THIS PROJECT. THIS NOTE APPLIES TO ALL PAGES.
- REFER TO SECTION 7-18.4.1 OF THE STANDARD SPECIFICATIONS, REGARDING SAFETY DEVICES.

CONSTRUCTION NOTES:

- WORK SHALL BE CONSTRUCTED ACCORDING TO THE STANDARD SPECIFICATIONS FOR PUBLIC WORKS CONSTRUCTION (1970 EDITION WITH 1971 (1972) SUPPLEMENTS) AND COUNTY ENGINEER SPECIAL PROVISIONS FOR THE CONSTRUCTION OF SANITARY SEWERS DATED APRIL 19, 1971.
- THE CONTRACTOR SHALL NOTIFY THE CONSTRUCTION DIVISION BY TELEPHONE, 666-7011, EXT. 250, AT LEAST TWENTY-FOUR HOURS BEFORE STARTING ANY WORK UNDER THIS CONTRACT.
- HOUSE LATERALS TO BE CONSTRUCTED WITH INVERTS AT PROPERTY LINE 6 FEET BELOW CURB GRADE EXCEPT AS NOTED.
- WPE OR THE BRANCHES MAY BE USED FOR CONNECTIONS TO MAINLINE SEWERS EXCEPT AS NOTED.
- ALL STRUCTURES SHALL BE EITHER BRICK MANHOLES PER 8.3 OR PRECAST CONCRETE MANHOLES PER 8.3A, EXCEPT AS NOTED.
- PROVIDE STAKES ON THE PROPERTY LINE OR PROPERTY LINES PRODUCED AT RIGHT ANGLES TO THE SEWER LINE AT THE CENTER LINE OF EACH MANHOLE.
- MANHOLE TOPS IN UNIMPROVED RIGHTS OF WAY TO BE SIX INCHES ABOVE FINISHED GRADE.
- VITRIFIED CLAY PIPE JOINTS SHALL BE TYPE "B", "C", "D", OR "E" PER STANDARD SPECIFICATIONS SECTION 306.2.
- IF A POWER POLE IS WITHIN THREE FEET OF THE SEWER, THE SEWER SHALL BE ENCASED, PER 8.23, CASE II, TWO FEET ON EACH SIDE FROM THE POINT OF INTERFERENCE.
- IF DURING THE COURSE OF CONSTRUCTION IT IS DETERMINED THAT THERE IS LESS THAN FOUR FEET OF COVER OVER THE TOP OF A MAIN LINE OR HOUSE LATERAL V.C.P. SEWER WHICH IS NOT INDICATED ON THE PLANS, THE PIPE SHALL BE ENCASED PER 8.23, CASE II UNLESS OTHERWISE APPROVED BY THE COUNTY ENGINEER.
- ALL JOINTS BETWEEN CAST IRON PIPE AND VITRIFIED CLAY PIPE SHALL BE MADE WITH A RUBBER SLEEVE JOINT, TYPE "C" OR "D", WITH BUSHING IF NECESSARY PER STANDARD SPECIFICATIONS, SECTION 306.2.
- SEWERS TO BE TESTED FOR LEAKAGE PER SECTION 306.2.2 OF THE STANDARD SPECIFICATIONS AND SPECIAL PROVISIONS.
- RESURFACE ALL TRENCHES WITHIN PAVED AREAS TO MEET L.A. COUNTY ROAD DEPT. OR CALIFORNIA STATE HIGHWAY REQUIREMENTS IN ACCORDANCE WITH PERMITS.
- FULL COMPLIANCE WITH SECTION 506-1.9.3 OF THE SPECIAL PROVISIONS WILL BE REQUIRED FOR BACKFILL IN STREETS. CERTIFICATION OF BACKFILL CONSTRUCTION AND SAID EQUIVALENTS BY A QUALIFIED, REGISTERED TESTING LABORATORY SHALL BE PROVIDED BY THE PERMITTEE PRIOR TO THE ISSUANCE OF A CERTIFICATE OF PARTIAL ACCEPTANCE.

PROFILE, ALIGNMENT AND GRADE OF  
**SANITARY SEWERS** PAGE 1

TO BE CONSTRUCTED IN  
 TRACT NO. 27376

45,289

PRIVATE CONTRACT NO. 9003

W.S. 34

1 SHEETS, 2 PAGES

SCALE: VERT. 1"=4' JANUARY, 1974  
 HORIZ. 1"=40'  
 PREPARED IN THE OFFICES OF  
**R. E. GRAGE AND ASSOCIATES**  
 302 E. ARTESIA BLVD. LONG BEACH, CA 90805  
 BY: *R. E. Grage*  
 REG. E. No. 17137

THE FOLLOWING LATEST REVISED STANDARD PLANS ON FILE IN THE OFFICE OF THE COUNTY ENGINEER SHALL APPLY IN THE CONSTRUCTION OF THIS PROJECT:

LEGEND	8.1
MINIMUM PUBLIC SAFETY REQUIREMENTS	8.2
BRICK MANHOLE	8.3
STANDARD MANHOLE STEP	8.17
BEDDING FOR SEWER PIPE	8.21
CRABBING AND ENCASEMENT	8.23
WPE OR THE SUPPORT	8.24
ALLOWABLE TRENCH WIDTHS	8.26
LOCKING MANHOLE FRAME AND COVER	8.28
NON-REINFORCED PRECAST CONCRETE MANHOLE	8.36

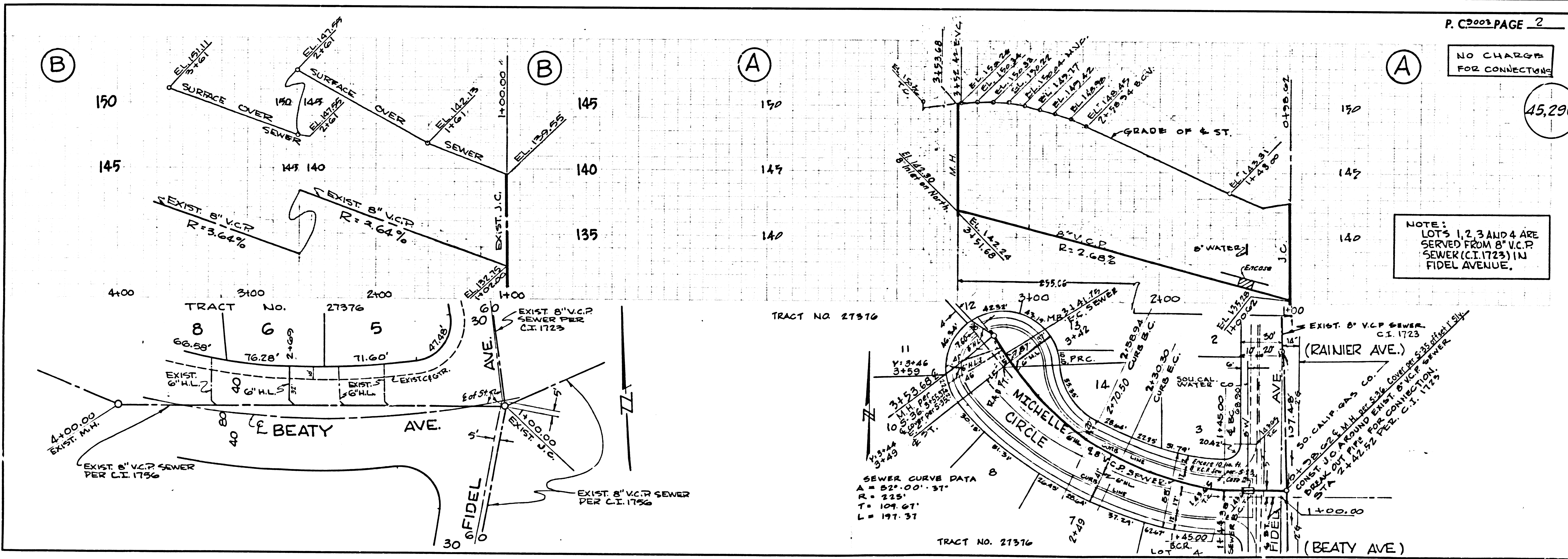
COUNTY OF LOS ANGELES, CALIFORNIA

JOHN A. LAMBIE, COUNTY ENGINEER JOHN D. PARKHURST, CHIEF ENGINEER

APPROVED *J. A. Lambie* 3/23/74 APPROVED *J. D. Parkhurst* 3/23/74

CHECKED *R. E. Grage* 3/24/74

WHITTIER BLDG. DIST. 11 J.N. 0250.02



P. 9003 PAGE 2

NO CHARGE FOR CONNECTIONS

45,290

NOTE:  
 LOTS 1, 2, 3 AND 4 ARE SERVED FROM 8" V.C.P. SEWER (C.I. 1723) IN FIDEL AVENUE.