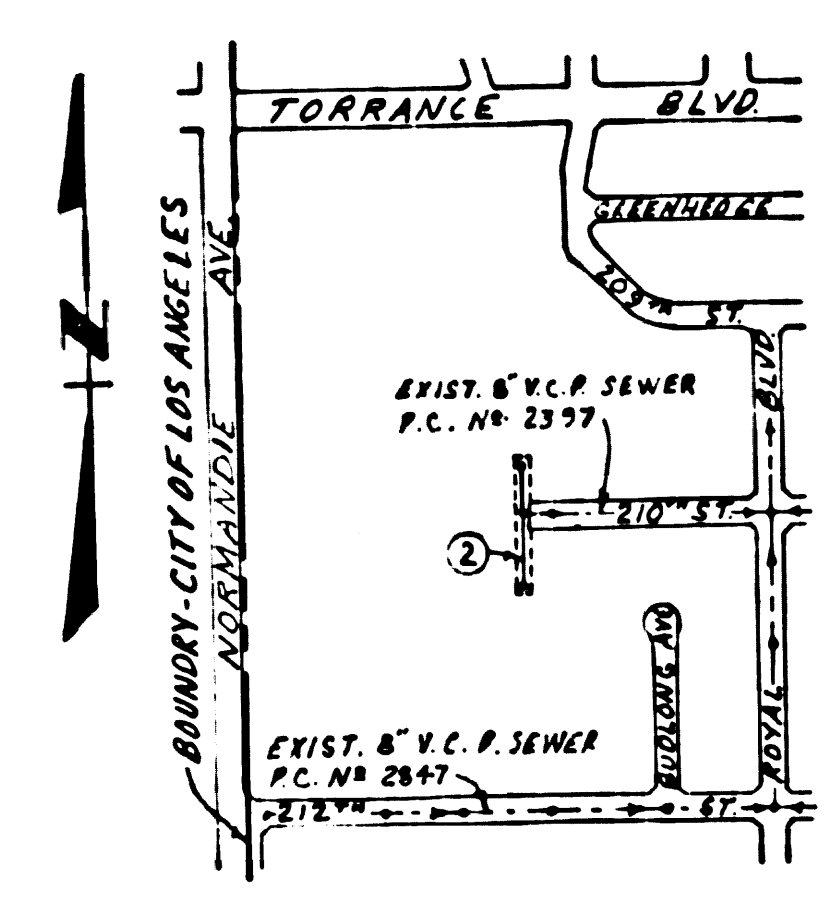


B.M. BY 3040 ELEV. 35.917'
 1 1/2" W. C. NORMANDIE AVE. 35 FT.
 S. BUNK. TO B.L.P. NO. 2100.
 GARDENA QUAD. 1965.



INDEX MAP
 SCALE: 1" = 600'

19. FULL COMPLIANCE WITH SEC. 306-1.3.6 OF THE SPECIAL PROVISIONS WILL BE REQUIRED FOR BACKFILL IN STREETS. CERTIFICATION OF BACKFILL COMPOSITION AND SAND EQUIVALENTS BY QUALIFIED REGISTERED TESTING LABORATORY SHALL BE PROVIDED BY THE PERMITTEE PRIOR TO THE ISSUANCE OF A CERTIFICATE OF PARTIAL ACCEPTANCE.
20. PRIOR TO ISSUANCE OF THE REQUIRED SEWER CONSTRUCTION PERMIT BY THE COUNTY ENGINEER, THE CONTRACTOR SHALL OBTAIN A PERMIT TO EXCAVATE FROM THE STATE OF CALIFORNIA, DIVISION OF INDUSTRIAL SAFETY, 250 E. 4TH ST., LONG BEACH 90802.

COUNTY'S STANDARD SPECIFICATIONS SHALL BE APPLIED TO THIS PROJECT UNLESS OTHERWISE SPECIFIED.
 (PHONE NO. 604-633-1161)

NO CONNECTION FOR THE DISPOSAL OF INDUSTRIAL WASTES SHALL BE MADE TO SEWERS SHOWN ON THIS PLAN UNLESS A PERMIT FROM THE STATE OF CALIFORNIA, DIVISION OF INDUSTRIAL SAFETY, 250 E. 4TH ST., LONG BEACH 90802, IS OBTAINED.

REVISION NO. 1: ADDED 90 L.F. 8" V.C.P. & ONE M.H. N.Y. SECTION (C-C)
 APPROVED BY: [Signature] 8-21-74

LOMITA BLDG. DIST. NO. 12

- NOTES:
1. PROVIDE STAKES ON THE PROPERTY LINE OR PROPERTY LINES PRODUCED AT RIGHT ANGLES TO THE SEWER LINE AT THE CENTER LINE OF EACH MANHOLE.
 2. NO REPRESENTATIVE OF THE COUNTY ENGINEER WILL SURVEY OR LAY OUT ANY PORTION OF THE WORK.
 3. THE PRIVATE ENGINEER SHALL FURNISH THE COUNTY ENGINEER WITH GRADE SHEETS AND STATIONING FOR ALL HOUSE LATERALS AND "T" BRANCHES AND SHALL PROVIDE STAKES FOR THEM AT THEIR PROPER LOCATIONS WITH STATIONING PLAINLY MARKED. ALL HOUSE LATERALS SHALL BE CONSTRUCTED IN A STRAIGHT ALIGNMENT AT RIGHT ANGLES FROM THE MAIN LINE SEWER EXCEPT AS SHOWN ON THE PLANS. HOUSE LATERALS FROM CHIMNEYS SHALL NOT HAVE AN ANGLE OF LESS THAN 45° WITH THE MAIN LINE SEWER. ANY CHANGE IN ALIGNMENT SHALL BE REQUESTED BY WRITING BY THE PRIVATE ENGINEER.
 4. THE PRIVATE ENGINEER SHALL FURNISH THE HOUSE LATERAL DEPTH AT THE PROPERTY LINE BELOW THE TOP OF CURB ELEVATION FOR EACH HOUSE LATERAL ON THE GRADE SHEET.
 5. NO REVISIONS SHALL BE MADE IN THESE PLANS WITHOUT THE APPROVAL OF THE COUNTY ENGINEER.
 6. THE CONTRACTOR SHALL NOTIFY THE DISTRICT ENGINEER BY TELEPHONE 974-7283 AT LEAST TWENTY-FOUR HOURS BEFORE STARTING ANY WORK UNDER THIS CONTRACT.
 7. ALL STRUCTURES SHALL BE EITHER BRICK MANHOLES PER S-33 OR PRECAST CONCRETE MANHOLES PER S-36 EXCEPT AS NOTED.
 8. "Y" OR "T" BRANCHES MAY BE USED FOR CONNECTIONS TO MAINLINE SEWERS EXCEPT AS NOTED.
 9. MANHOLE TOPS IN UNIMPROVED RIGHTS-OF-WAY TO BE SIX INCHES ABOVE FINISHED GRADE.
 10. USE EXTRA STRENGTH PIPE. ALL PIPE IS STANDARD DEPTH EXCEPT AS NOTED.
 11. UNTRAPPED CLAY PIPE MANHOLES SHALL BE 18" DIA. 6' PER STANDARD SPECIFICATION SEC. 208-2.
 12. IF A HOUSE HOLE IS WITHIN THREE FEET OF THE SEWER, THE SEWER SHALL BE ENCASED PER S-32, CASE II, TWO FEET ON EACH SIDE FROM THE POINT OF INTERFERENCE.
 13. IN DURING THE COURSE OF CONSTRUCTION IT IS DETERMINED THAT THERE IS LESS THAN FOUR FEET OF COVER OVER THE TOP OF A MAIN LINE OR HOUSE LATERAL V.C.P. SEWER WHICH IS NOT INDICATED ON THE PLANS, THE PIPE SHALL BE ENCASED PER S-32, CASE II, UNLESS OTHERWISE APPROVED BY THE COUNTY ENGINEER.
 14. HOUSE LATERALS TO BE CONSTRUCTED WITH INVERTS AT PROPERTY LINE 6 FEET BELOW CURB GRADE EXCEPT AS NOTED.
 15. RESURFACE ALL TRENCHES WITHIN PAVED AREAS TO MEET L.A. COUNTY ROAD DEPT. OR CALIFORNIA STATE HIGHWAY REQUIREMENTS IN ACCORDANCE WITH PERMITS.
 16. SEWERS TO BE TESTED FOR LEAKAGE PER SEC. 304-1.4 OF THE STD. SPECS. AND SPECIAL PROVISIONS.
 17. REFER TO SEC. 7-A.4.1 OF THE STANDARD SPECIFICATIONS, REGARDING SAFETY BARRELS.
 18. ALL JOINTS BETWEEN CAST IRON PIPE AND UNTRAPPED CLAY PIPE SHALL BE MADE WITH A RUBBER SLEEVES JOINT, TYPE "C" OR "D" (WITH BUSHINGS IF NECESSARY) PER STANDARD SPECIFICATIONS SEC. 208-B.

THE FOLLOWING LATEST REVISED STANDARD PLANS ON FILE IN THE OFFICE OF THE COUNTY ENGINEER SHALL APPLY TO THE CONSTRUCTION OF THIS PROJECT.

LEGEND	2-1
MINIMUM PUBLIC SAFETY REQUIREMENTS	2-2
BRICK MANHOLES	2-3
NON-REINFORCED PRECAST CONC. MANHOLE	2-3A
MANHOLE GRADE AND COVER	2-4
STANDARD MANHOLE STEP	2-5
BEARING FOR SEWER PIPE	2-7
W.P. OF THE SUPPORT	2-14
ALLOWABLE TRENCH WIDTHS	2-33

NOTICE TO CONTRACTOR
 The existence and location of any underground utility pipes or structures shown on these plans are obtained by a search of the available records to the best of my knowledge there are no existing utilities except as shown on these plans. The contractor is required to take due precautionary measures to protect the utility lines shown and any other lines not of record or not shown on these plans.
 [Signature] 8-21-74

COLLECT CHARGES AS INDICATED

PROFILE ALIGNMENT AND GRADE OF
 SANITARY SEWERS PAGE 1

TO BE CONSTRUCTED IN
 SANITARY SEWER R/W
 S/O 210TH ST.
 PRIVATE CONTRACT NO. 9004

W.S. 26
 1 SHEET 2 PAGES
 SCALE: HORIZ. 1" = 40' VERT. 1" = 4' NOVEMBER, 1973
 PREPARED IN THE OFFICES OF
 J.H. EDWARDS CO., INC.
 321-6267 327-0543
 REG. C.E. NO. 11302
 FOR LEGEND SEE PLAN NO. S-1

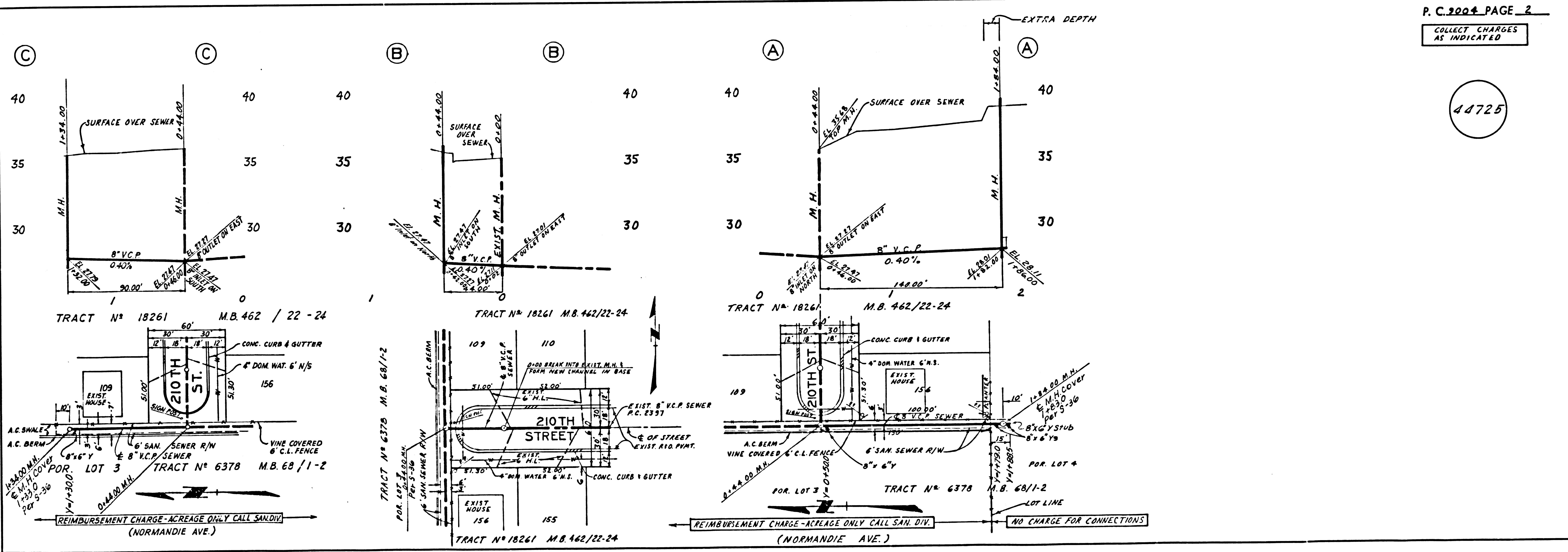
44724

NOTE:
 GRADES TO WHICH THIS IMPROVEMENT IS TO BE CONSTRUCTED ARE SHOWN ON PLANS AND PROFILES. GRADE POINTS FOR TOP OF CURBS, CENTER LINE OF STREETS, OR CENTER LINE OF ALLEYS ARE SHOWN BY CIRCLES ON PROFILES. AT ALL POINTS BETWEEN DESIGNATED POINTS THE GRADE SHALL BE ESTABLISHED SO AS TO CONFORM TO A STRAIGHT LINE DRAWN BETWEEN SAID DESIGNATED POINTS. ELEVATIONS ARE IN FEET ABOVE U.S.C. & G.S. SEA LEVEL DATUM OF 1929.
 THIS DRAWING AND THE DATA HEREON ARE HEREBY MADE A PART OF THE SPECIFICATIONS FOR PUBLIC WORKS, COUNTY OF LOS ANGELES (1973). WORK SHALL BE CONSTRUCTED ACCORDING TO STANDARD SPECIFICATIONS FOR PUBLIC WORKS, COUNTY OF LOS ANGELES (1973). BEFORE WORK CAN BE STARTED, THE CONTRACTOR MUST OBTAIN A PERMIT TO EXCAVATE IN COUNTY STREETS FROM THE L.A. COUNTY ROAD DEPT., DISTRICT OFFICE NO. 15, AND PAY A FEE TO THE COUNTY ENGINEER, ROOM 2-3, 1550 S. INDIAN AVENUE, DISTRICT OFFICE, LONG BEACH, CALIFORNIA 90802. APPROVAL OF THIS PLAN BY THE COUNTY OF LOS ANGELES DOES NOT CONSTITUTE A REPRESENTATION AS TO THE ACCURACY OF THE LOCATION OR OF THE EXISTENCE OR NON-EXISTENCE OF ANY UNDERGROUND UTILITY PIPE, OR STRUCTURE WITHIN THE LIMITS OF THIS PROJECT. THIS NOTE APPLIES TO ALL PAGES.
 IF WORK IS TO BE DONE IN A STATE HIGHWAY, A PERMIT MUST BE OBTAINED FROM THE STATE OF CALIFORNIA, DIVISION OF HIGHWAY, 120 SOUTH SPRING STREET, LOS ANGELES, CALIFORNIA.

COUNTY OF LOS ANGELES, CALIFORNIA
 HARVEY T. BRANDT, COUNTY ENGINEER J. D. PARKHURST, CHIEF ENGINEER
 CO. SAN. DIST. NO. 8
 APPROVED BY: [Signature] OFFICE ENGINEER

APPROVED BY: [Signature] 8-21-74
 CHECKED BY: [Signature] REG. C.E. NO. 15,574

J.N. 0372.24



P.C. 9004 PAGE 2
 COLLECT CHARGES AS INDICATED

44725