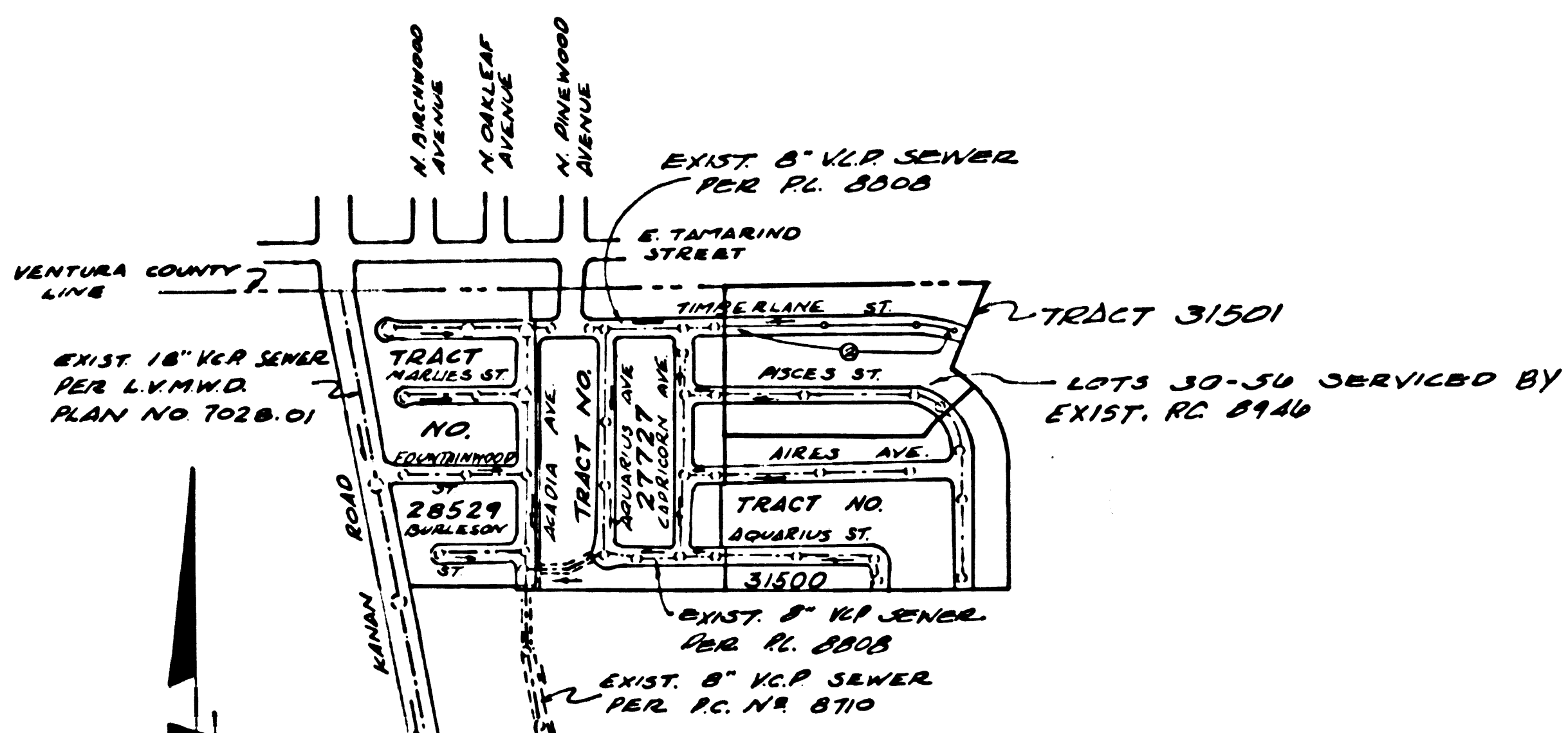


B.M. BY 9010 ELEV. 950.266
 ELEV. 950.266 RD. DEPT. BM TAG IN SOUTH END
 CATCH BASIN 41.0 FT. E/O C. KANAN RD 8 0.95
 MILES N/O THOUSAND OAKS BLVD. 0.16 MILES
 S/O L.A. COUNTY & VENTURA CO. LINE
 MALIBU QUAD. 19 72



PC 9005
 INDEX MAP
 SCALE: 1"=600'

NOTE: FIGURES IN CIRCLES INDICATE PAGE NUMBERS

Revision No. 1 Date 4/28/75
 Description: Page 2, Sewer grade from Sta. 5+40 to Sta. 9+33 in Timberlane St to provide clearance over 72" storm drain.
 APPROVED [Signature] Date 4/29/75
 E-27-75 Office of County Engineer 2-25

GENERAL NOTES:

- ELEVATIONS ARE IN FEET ABOVE U.S.C. & G.S. SEA LEVEL DATUM OF 1929
- NO BRANCHES SHALL BE MADE IN THESE LINES WITHOUT THE APPROVAL OF THE COUNTY ENGINEER.
- NO REPRESENTATIVE OF THE COUNTY ENGINEER WILL SURVEY OR LAY OUT ANY PORTION OF THE WORK.
- GRADES TO WHICH THIS IMPROVEMENT IS TO BE CONSTRUCTED ARE SHOWN ON PLANS AND PROFILES. GRADE POINTS FOR TOP OF CURBS, CENTER LINE OF STREETS, OR CENTER LINE OF ALLEYS ARE SHOWN BY CIRCLES ON PROFILES. AT ALL POINTS BETWEEN DESIGNATED POINTS THE GRADE SHALL BE ESTABLISHED SO AS TO CONFORM TO A STRAIGHT LINE DRAWN BETWEEN SAID DESIGNATED POINTS.
- THE PRIVATE ENGINEER SHALL FURNISH THE COUNTY ENGINEER WITH GRADE SHEETS AND STATIONING FOR ALL HOUSE LATERALS AND 10" OR 12" BRANCHES AND SHALL PROVIDE STAKES FOR THESE AT THEIR WORKER LOCATIONS WITH STATIONING PLAINLY MARKED. ALL HOUSE LATERALS SHALL BE CONSTRUCTED IN A STRAIGHT ALIGNMENT AT RIGHT ANGLES FROM THE MAIN LINE SEWER EXCEPT AS SHOWN ON THE PLANS. HOUSE LATERALS FROM CHIMNEYS SHALL NOT HAVE AN ANGLE OF LESS THAN 45° WITH THE MAIN LINE SEWER. ANY CHANGE IN ALIGNMENT SHALL BE REQUESTED BY WRITING BY THE PRIVATE ENGINEER.
- THE PRIVATE ENGINEER SHALL FURNISH THE COUNTY ENGINEER WITH THE HOUSE LATERAL DEPTH AT THE PROPERTY LINE BELOW THE TOP OF CURB ELEVATION FOR EACH HOUSE LATERAL ON THE GRADE SHEET.
- BEFORE WORK CAN BE STARTED, THE CONTRACTOR MUST OBTAIN A PERMIT TO EXCAVATE IN COUNTY STREETS FROM THE L.A. COUNTY ROAD DEPT. DISTRICT OFFICE NO. 8 AND PAY A FEE TO THE COUNTY ENGINEER, 1028 W. 82ND ST. L.A. 44006 UNDER THE CALIF. STATE PUBLIC WORKS ACT TO COVER THE COST OF GUARANTEEING THE EXISTENCE OF THE MAIN LINE SEWER. A PERMIT MUST BE OBTAINED FROM THE STATE OF CALIFORNIA, DIVISION OF HIGHWAYS, 120 SOUTH SPRING STREET, LOS ANGELES, CALIFORNIA.
- APPROVAL OF THIS PLAN BY THE COUNTY OF LOS ANGELES DOES NOT CONSTITUTE A REPRESENTATION AS TO THE ACCURACY OF THE LOCATION OF OR THE EXISTENCE OR NON-EXISTENCE OF ANY UNDERGROUND UTILITY PIPE, OR STRUCTURE WITHIN THE LIMITS OF THIS PROJECT. THIS NOTE APPLIES TO ALL PAGES.
- REFER TO SECTION 7-10.1 OF THE STANDARD SPECIFICATIONS, REGARDING SAFETY CORDS.
- BEFORE THE COMMENCEMENT OF THE REQUIRED SEWER CONSTRUCTION PERMIT BY THE COUNTY ENGINEER, THE CONTRACTOR SHALL OBTAIN A PERMIT TO EXCAVATE FROM THE STATE OF CALIFORNIA, DIVISION OF INDUSTRIAL SAFETY.
- INDICATES HOUSE LATERALS TO BE CONSTRUCTED AT 1/4" RISE PER FOOT
- INDICATES HOUSE LATERAL DEPTH IS 6 FEET AT PROPERTY LINE.

CONSTRUCTION NOTES:

- WORK SHALL BE CONSTRUCTED ACCORDING TO THE STANDARD SPECIFICATIONS FOR PUBLIC WORKS CONSTRUCTION 1978 EDITION WITH 1978 SUPPLEMENTS AND COUNTY ENGINEER SPECIAL PROVISIONS FOR THE CONSTRUCTION OF SANITARY SEWERS DATED MARCH 4, 1974 AND SHALL BE PROSECUTED ONLY IN THE PRESENCE OF THE COUNTY ENGINEER.
- THE CONTRACTOR SHALL NOTIFY THE PUBLIC WORKS DIVISION BY TELEPHONE, (213) 974-7228, AT LEAST TWENTY-FOUR HOURS BEFORE STARTING ANY WORK UNDER THIS CONTRACT.
- HOUSE LATERALS TO BE CONSTRUCTED WITH INVERTS AT PROPERTY LINE 6 FEET BELOW CURB GRADE EXCEPT AS NOTED.
- WYE OR TEE BRANCHES MAY BE USED FOR CONNECTIONS TO MAINLINE SEWERS EXCEPT AS NOTED.
- ALL STRUCTURES SHALL BE EITHER BRICK MANHOLES PER 8-3 OF PRECAST CONCRETE MANHOLES PER 8-3.4, EXCEPT AS NOTED.
- PROVIDE STAKES ON THE PROPERTY LINE OR PROPERTY LINES PRODUCED AT RIGHT ANGLES TO THE SEWER LINE AT THE CENTER LINE OF EACH MANHOLE.
- MANHOLE TOPS IN UNIMPROVED RIGHTS OF WAY TO BE SIX INCHES ABOVE FINISHED GRADE.
- VERIFIED CLAY PIPE JOINTS SHALL BE TYPE "B", "F", OR "G" PER STANDARD SPECIFICATIONS SECTION 300-8.
- IF A COVER POLE IS WITHIN THREE FEET OF THE SEWER, THE SEWER SHALL BE ENCASED PER 8-3.3, CASE II, TWO FEET ON EACH SIDE FROM THE POINT OF INTERFERENCE.
- IF DURING THE COURSE OF CONSTRUCTION IT IS DETERMINED THAT THERE IS LESS THAN FOUR FEET OF COVER OVER THE TOP OF A MAIN LINE OR HOUSE LATERAL V.C.P. SEWER WHICH IS NOT INDICATED ON THE PLANS, THE PIPE SHALL BE ENCASED PER 8-3.3, CASE II UNLESS OTHERWISE APPROVED BY THE COUNTY ENGINEER.
- ALL JOINTS BETWEEN CAST IRON PIPE AND VERIFIED CLAY PIPE SHALL BE MADE WITH A RUBBER SEWAGE JOINT, TYPE "C" OR "D", (WITH BUSHING IF NECESSARY) PER STANDARD SPECIFICATIONS, SECTION 300-8.
- SHOWING BY THE PROFILES BEYOND THE END OF SECTION 306-1.6 OF THE STANDARD SPECIFICATIONS AND SPECIAL PROVISIONS.
- RESURFACE ALL TRENCHES WITHIN PAVED AREAS TO MEET L.A. COUNTY ROAD DEPT. OR CALIFORNIA STATE HIGHWAY REQUIREMENTS IN ACCORDANCE WITH PERMITS.
- FULL COMPLIANCE WITH SECTION 306-1.8 OF THE SPECIAL PROVISIONS WILL BE REQUIRED FOR BACKFILL IN STREETS. CERTIFICATION OF BACKFILL COMPACTION AND SAND EQUIVALENCY BY A QUALIFIED REGISTERED TESTING LABORATORY SHALL BE PROVIDED BY THE PERMITTEE PRIOR TO THE ISSUANCE OF A CERTIFICATE OF PARTIAL ACCEPTANCE.

TO BE CONSTRUCTED IN
 TRACT NO. 31501
 PRIVATE CONTRACT NO. 9005

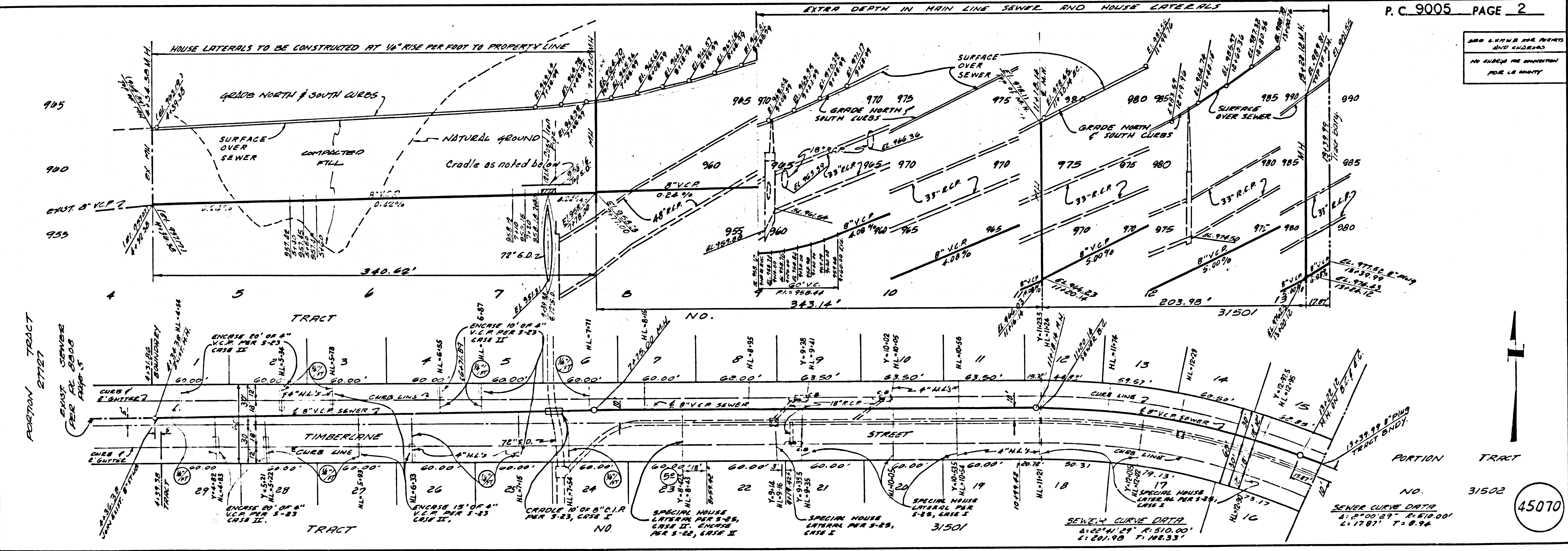
W.S. 90, A-1
 2 SHEETS, 3 PAGES
 SCALE: VERT. 1"=4'
 HORIZ. 1"=40'
 APRIL, 1974
 PREPARED IN THE OFFICES OF
 VANTAGE ENGINEERING COMPANY
 19730 VENTURA BOULEVARD
 WOODLAND HILLS, CALIFORNIA PHONE: 348-5509
 BY: [Signature] M. [Signature]
 REG. C. E. No. 14815.

THE FOLLOWING LATEST REVISED STANDARD PLANS ON FILE IN THE OFFICE OF THE COUNTY ENGINEER SHALL APPLY IN THE CONSTRUCTION OF THIS PROJECT:

LEGEND	8-1
MINIMUM PUBLIC SAFETY REQUIREMENTS	8-2
BRICK MANHOLE	8-3
STANDARD MANHOLE STOP	8-7
BOXING FOR SEWER PIPE	8-8
CRADLING AND ENCASEMENT	8-9
WYE OR TEE SUPPORT	8-36
ALLOWABLE TRENCH WIDTHS	8-33
LOCKING MANHOLE FRAME AND COVER	8-38
HIGH STRENGTH PRECAST CONCRETE MANHOLE	8-36
SPECIAL HOUSE LATERALS	8-25

COUNTY OF LOS ANGELES, CALIFORNIA
 HARVEY T. BRANDT, COUNTY ENGINEER LAS VIRGENES MUNICIPAL WATER DISTRICT
 APPROVED [Signature] 10/21/74 APPROVED BY [Signature] 10-21-74
 REGIONAL ENGINEER (DATE) GENERAL MGR., CHIEF ENGR. (DATE)
 CHECKED BY [Signature] 10-21-74
 REG. C. E. NO. 13166
 CALABASAS BLDG. DIST. 91 I.N. 0230.02

45069



SEE A SEWER PIPE PERMITS AND CHARGES
 NO CHARGE FOR CONSTRUCTION FOR L.A. COUNTY

45070

