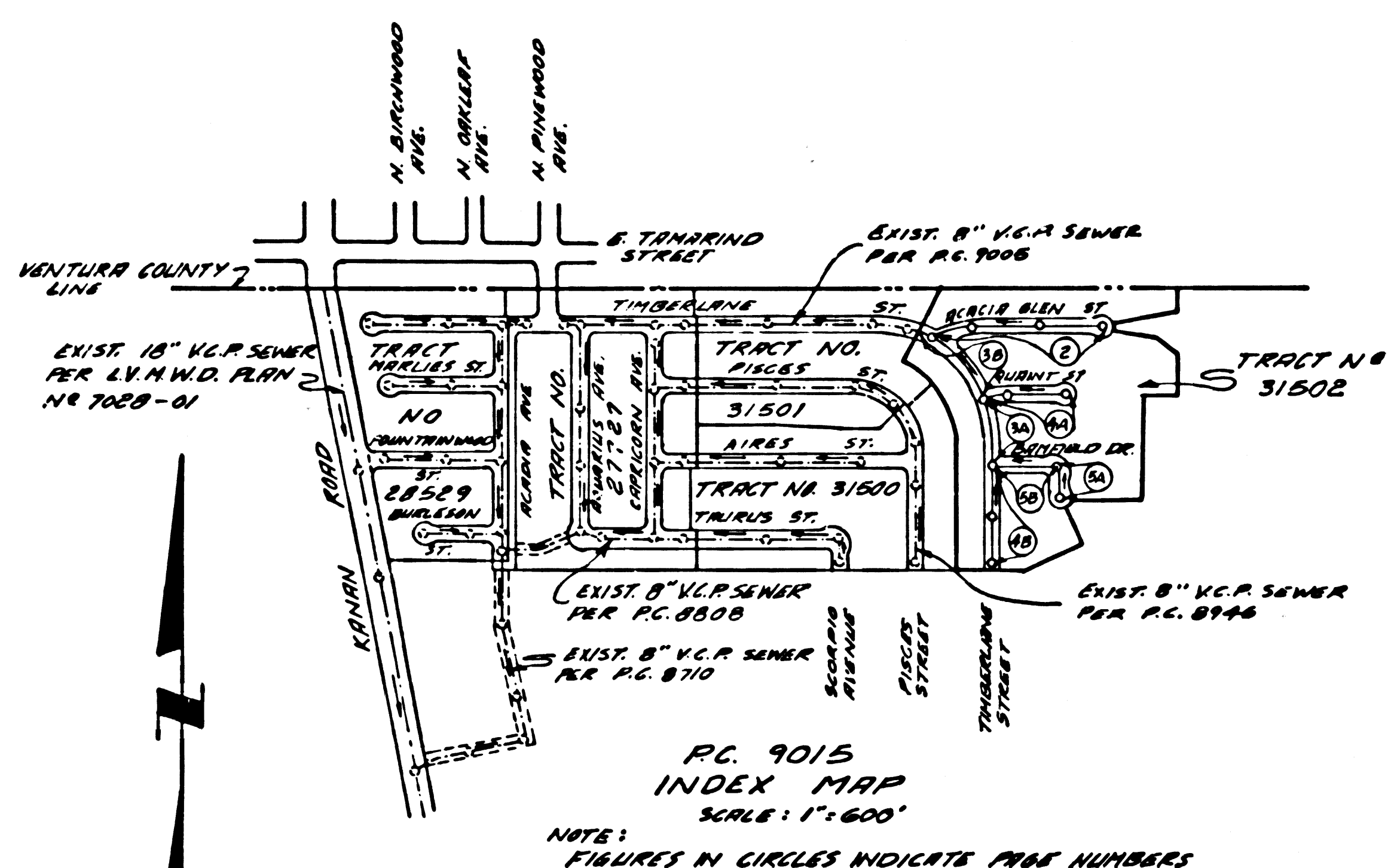


B.M. BY 9010 ELEV. 950.266  
 ELEV. 950.266 RD. DEPT. BM TAG IN SOUTH END  
 CATCH BASIN 41.0 FT. E/O KANAN RD. @ 0.95  
 MILES N/O THOUSAND OAKS BLVD. 0.16 MILES  
 S/O L.A. COUNTY & VENTURA CO. LINE.  
 MALIBU QUAD. 19-72



RC. 9015  
 INDEX MAP  
 SCALE: 1"=600'  
 NOTE:  
 FIGURES IN CIRCLES INDICATE PUMP NUMBERS

DOUBLE SCALE

- GENERAL NOTES:
1. ELEVATIONS ARE IN FEET ABOVE U.S.C. & G.S. SEA LEVEL DATUM OF 1929.
  2. NO REVISIONS SHALL BE MADE IN THESE PLANS WITHOUT THE APPROVAL OF THE COUNTY ENGINEER.
  3. NO REPRESENTATIVE OF THE COUNTY ENGINEER WILL SURVEY OR LAY OUT ANY PORTION OF THE WORK.
  4. GRADES TO WHICH THIS IMPROVEMENT IS TO BE CONSTRUCTED ARE SHOWN ON PLANS AND HOUSES. GRADE POINTS FOR TOP OF CURBS, CENTER LINE OF STREETS, OR CENTER LINE OF ALLEYS ARE SHOWN BY CIRCLES ON PROFILES AT ALL POINTS BETWEEN DESIGNATED POINTS. THE GRADE SHALL BE ESTABLISHED SO AS TO CONFORM TO A STRAIGHT LINE BETWEEN SAID DESIGNATED POINTS.
  5. THE PRIVATE ENGINEER SHALL FURNISH THE COUNTY ENGINEER WITH GRADE SHEETS AND STATIONING FOR ALL HOUSE LATERALS AND "T" OR "Y" BRANCHES AND SHALL PROVIDE STAKES FOR THEM AT THEIR PROPER LOCATIONS WITH STATIONING PLAINLY MARKED. ALL HOUSE LATERALS SHALL BE CONSTRUCTED IN A STRAIGHT ALIGNMENT AT RIGHT ANGLES FROM THE MAIN LINE SEWER EXCEPT AS SHOWN ON THE PLANS. HOUSE LATERALS FROM CHIMNEYS SHALL NOT HAVE AN ANGLE OF LESS THAN 45° WITH THE MAIN LINE SEWER. ANY CHANGE IN ALIGNMENT SHALL BE REQUESTED IN WRITING BY THE PRIVATE ENGINEER.
  6. THE PRIVATE ENGINEER SHALL FURNISH THE HOUSE LATERAL BERTH AT THE PROPERTY LINE BELOW THE TOP OF CURB ELEVATION FOR EACH HOUSE LATERAL ON THE GRAB SHEET.
  7. BEFORE WORK CAN BE STARTED, THE CONTRACTOR MUST OBTAIN A PERMIT TO EXCAVATE IN COUNTY STREETS FROM THE L.A. COUNTY ROAD DEPT., DISTRICT OFFICE NO. 8, AND PAY A FEE TO THE COUNTY ENGINEER, 100 W. 8th St., S.F.A.E., ROOM 1801B, IN THE MAIN ROOM, OFFICE TO COVER THE COST OF CONSTRUCTION INSPECTION AND RECORD PLANS.
  8. IF WORK IS TO BE DONE IN A STATE HIGHWAY, A PERMIT MUST BE OBTAINED FROM THE STATE OF CALIFORNIA, DIVISION OF HIGHWAYS, 128 SOUTH SPRING STREET, LOS ANGELES, CALIFORNIA.
  9. APPROVAL OF THIS PLAN BY THE COUNTY OF LOS ANGELES DOES NOT CONSTITUTE A REPRESENTATION AS TO THE ACCURACY OF THE LOCATION OF OR THE EXISTENCE OR NON-EXISTENCE OF ANY UNDERGROUND UTILITY PIPE, OR STRUCTURE WITHIN THE LIMITS OF THE PROJECT. THIS NOTE APPLIES TO ALL PAGES.
  10. REFER TO SECTION 7-18.4.1 OF THE STANDARD SPECIFICATIONS, REGARDING SAFETY DEVICES.
  11. PRIOR TO RESUMPTION OF THE REQUIRED SEWER CONSTRUCTION PERMIT BY THE COUNTY ENGINEER, THE CONTRACTOR SHALL OBTAIN A PERMIT TO EXCAVATE FROM THE STATE OF CALIFORNIA, DIVISION OF INDUSTRIAL SAFETY.

PROFILE, ALIGNMENT AND GRADE OF  
**SANITARY SEWERS** PAGE 1

TRACT NO. 31502  
 PRIVATE CONTRACT NO. 9015

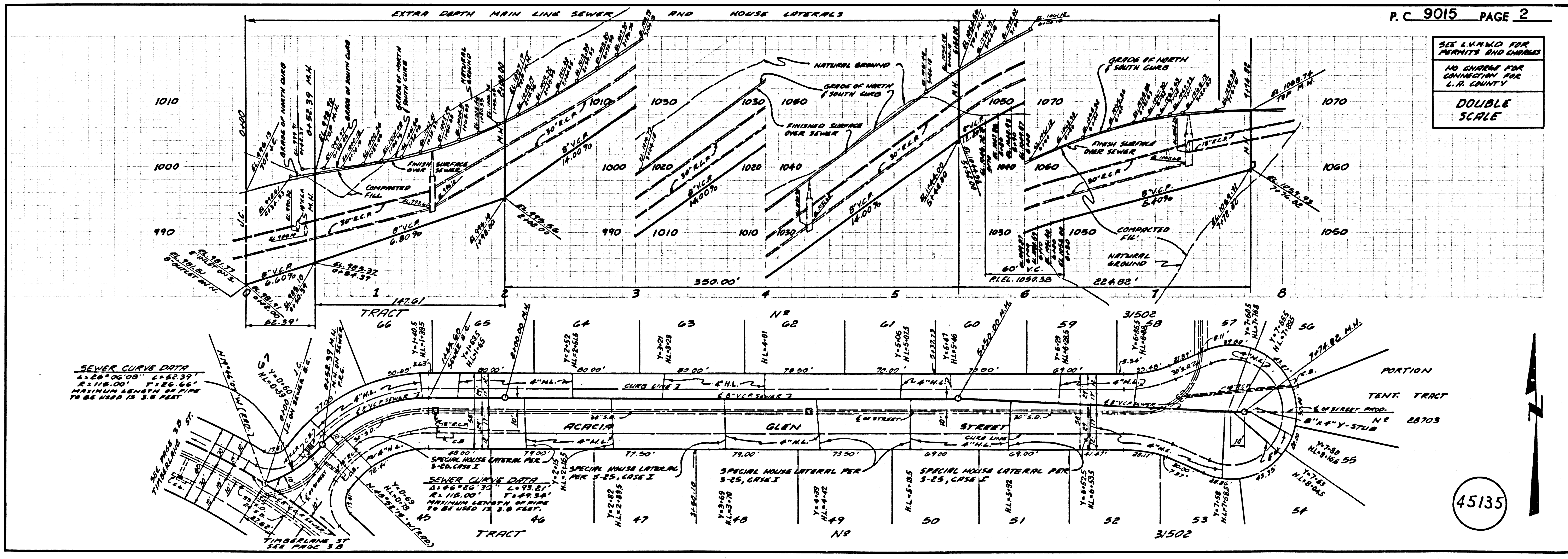
W.S. 90, A-1  
 3 SHEETS, 5 PAGES  
 SCALE: VERT. 1"=8'  
 HORIZ. 1"=40'  
 DECEMBER, 1974  
 PREPARED IN THE OFFICES OF  
 VANTAGE ENGINEERING COMPANY  
 19730 WOODLAND HILLS, CALIFORNIA 91364-5509  
 BY: *Vantage Engineering*  
 REG. C. E. No. 14815

- CONSTRUCTION NOTES:
1. WORK SHALL BE CONSTRUCTED ACCORDING TO THE STANDARD SPECIFICATIONS FOR PUBLIC WORKS CONSTRUCTION (1973 EDITION WITH SUPPLEMENT 3) AND COUNTY ENGINEER SPECIAL PROVISIONS FOR THE CONSTRUCTION OF SANITARY SEWERS DATED MARCH 1, 1974, AND SHALL BE PROTECTED ONLY IN THE PRESENCE OF THE COUNTY ENGINEER.
  2. THE CONTRACTOR SHALL NOTIFY THE SEWER DIVISION BY TELEPHONE, (818) 874-7888 AT LEAST TWENTY-FOUR HOURS BEFORE STARTING ANY WORK UNDER THIS CONTRACT.
  3. HOUSE LATERALS TO BE CONSTRUCTED WITH INVERTS AT PROPERTY LINE 4 FEET BELOW CURB GRADE EXCEPT AS NOTED.
  4. WYE OR TE BRANCHES MAY BE USED FOR CONNECTIONS TO MAINLINE SEWERS EXCEPT AS NOTED.
  5. ALL STRUCTURES SHALL BE EITHER BRICK MANHOLES PER S-2 OR PRECAST CONCRETE MANHOLES PER S-36, EXCEPT AS NOTED.
  6. PROVIDE STAKES ON THE PROPERTY LINE OR PROPERTY LINES PRODUCED AT RIGHT ANGLES TO THE SEWER LINE AT THE CENTER LINE OF FACE MANHOLES.
  7. MANHOLE TOPS IN UNIMPROVED AREAS OF WAY TO BE SIX INCHES ABOVE FINISHED GRADE AND LEVEL WITH GRADE IMPROVED AREAS OF WAY.
  8. VENTILATOR CAP JOINTS SHALL BE TYPE "B", "F", OR "G" PER STANDARD SPECIFICATIONS SECTION 308-2.
  9. IF A POWER POLE IS WITHIN THREE FEET OF THE SEWER, THE SEWER SHALL BE ENCASED, PER S-25, CASE II, TWO FEET ON EACH SIDE FROM THE POINT OF INTERFERENCE.
  10. IF DURING THE COURSE OF CONSTRUCTION IT IS DETERMINED THAT THERE IS LESS THAN FOUR FEET OF COVER OVER THE TOP OF A MAIN LINE OR HOUSE LATERAL V.C.P. SEWER WHICH IS NOT INDICATED ON THE PLANS, THE PIPE SHALL BE ENCASED PER S-25, CASE II UNLESS OTHERWISE APPROVED BY THE COUNTY ENGINEER.
  11. ALL JOINTS BETWEEN CASE IRON PIPE AND VITRIFIED CLAY PIPE SHALL BE MADE WITH A RUBBER SLEEVE JOINT, TYPE "C" OR "D", WITH GUBBERING IF NECESSARY PER STANDARD SPECIFICATIONS, SECTION 308-2.
  12. SEWERS TO BE AIR PRESSURE TESTED FOR LEAKS PER SECTION 308-1.4 OF THE STANDARD SPECIFICATIONS AND SPECIAL PROVISIONS IN ACCORDANCE WITH PERMITS.
  13. REPLACEMENT ALL TRENCHES WITHIN PAVED AREAS TO MEET L.A. COUNTY ROAD DEPT. OR CALIFORNIA STATE HIGHWAY REQUIREMENTS IN ACCORDANCE WITH PERMITS.
  14. FULL COMPLIANCE WITH SECTION 308-1.4 OF THE SPECIAL PROVISIONS WILL BE REQUIRED FOR BACKFILL IN STREETS. CERTIFICATION OF BACKFILL COMPACTION AND SAND EQUIVALENTS BY A QUALIFIED, REGISTERED TESTING LABORATORY SHALL BE PROVIDED BY THE PERMITTEE PRIOR TO THE ISSUANCE OF A CERTIFICATE OF PARTIAL ACCEPTANCE.

LEGEND	QUANTITY
MINIMUM PUBLIC SAFETY REQUIREMENTS	5-1
BRICK MANHOLES	5-2
STANDARD MANHOLE STEP	5-3
BEDDING FOR SEWER PIPE	5-4
CRADLING AND ENCASING	5-5
WYE OR TE SUPPORT	5-6
ALLOWABLE TRENCH WIDTH	5-7
LOCKING MANHOLE FRAME AND COVER	5-8
NON-REINFORCED PRECAST CONCRETE MANHOLE	5-9
SPECIAL HOUSE LATERAL	5-10

45134

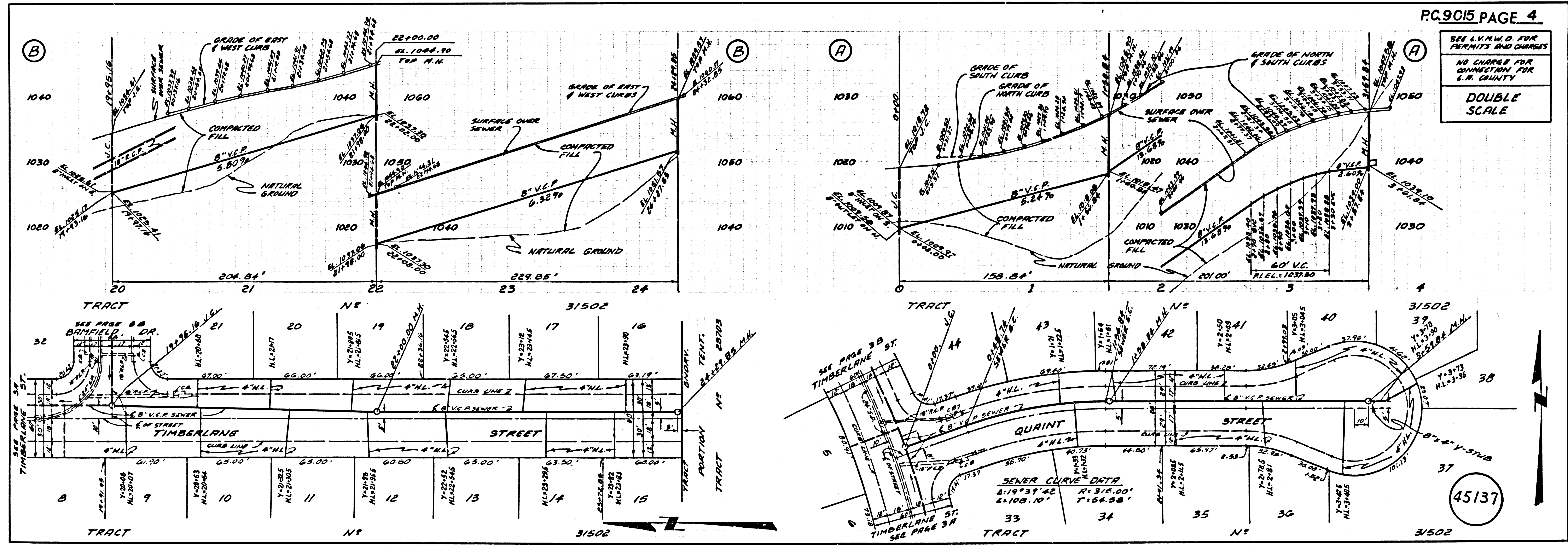
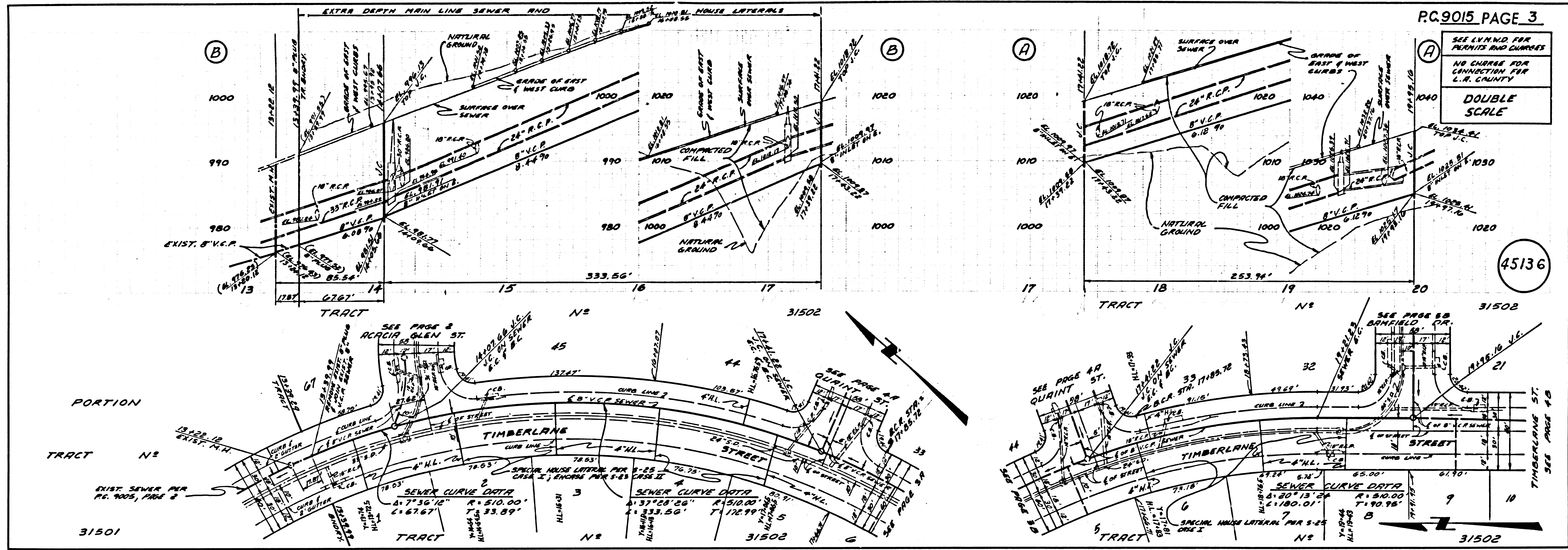
COUNTY OF LOS ANGELES, CALIFORNIA  
 HARVEY T. BRANDT, COUNTY ENGINEER LAS VIRGENES MUNICIPAL WATER DISTRICT  
 APPROVED: *Harvey T. Brandt* 2-19-75 REGIONAL ENGINEER  
 APPROVED: *W. Stokes* GENERAL MGR., CHIEF ENGR.  
 CHECKED: *Shirley Jones* 2-19-75  
 REG. C. E. NO. 12,166  
 CALABASAS BIDG. DIST. NO. 9.1 J.N. 0250.02



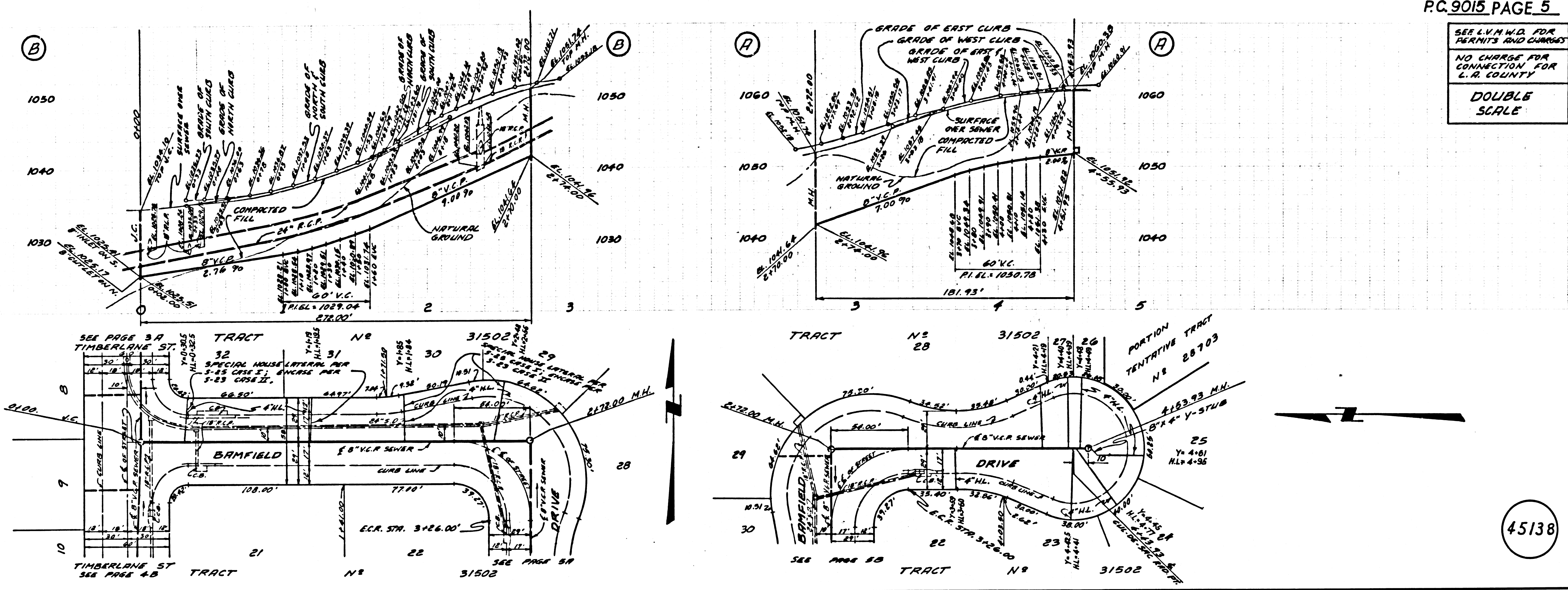
SEWER CURVE DATA  
 1. 28° 00' 00" L=152.39'  
 2. 118° 00' 00" L=161.64'  
 MINIMUM LENGTH OF PIPE TO BE USED IS 3.0 FEET

SEE L.M.W.D. FOR PERMITS AND CHARGES  
 NO CHARGE FOR CONNECTION FOR L.A. COUNTY  
 DOUBLE SCALE

45135



SEE L.V.M.D. FOR PERMITS AND CHARGES  
NO CHARGE FOR CONNECTION FOR L.A. COUNTY  
DOUBLE SCALE



45138