

CONSTRUCTED IN
EASEMENT FOR POLYNESIAN TRAILER PARK

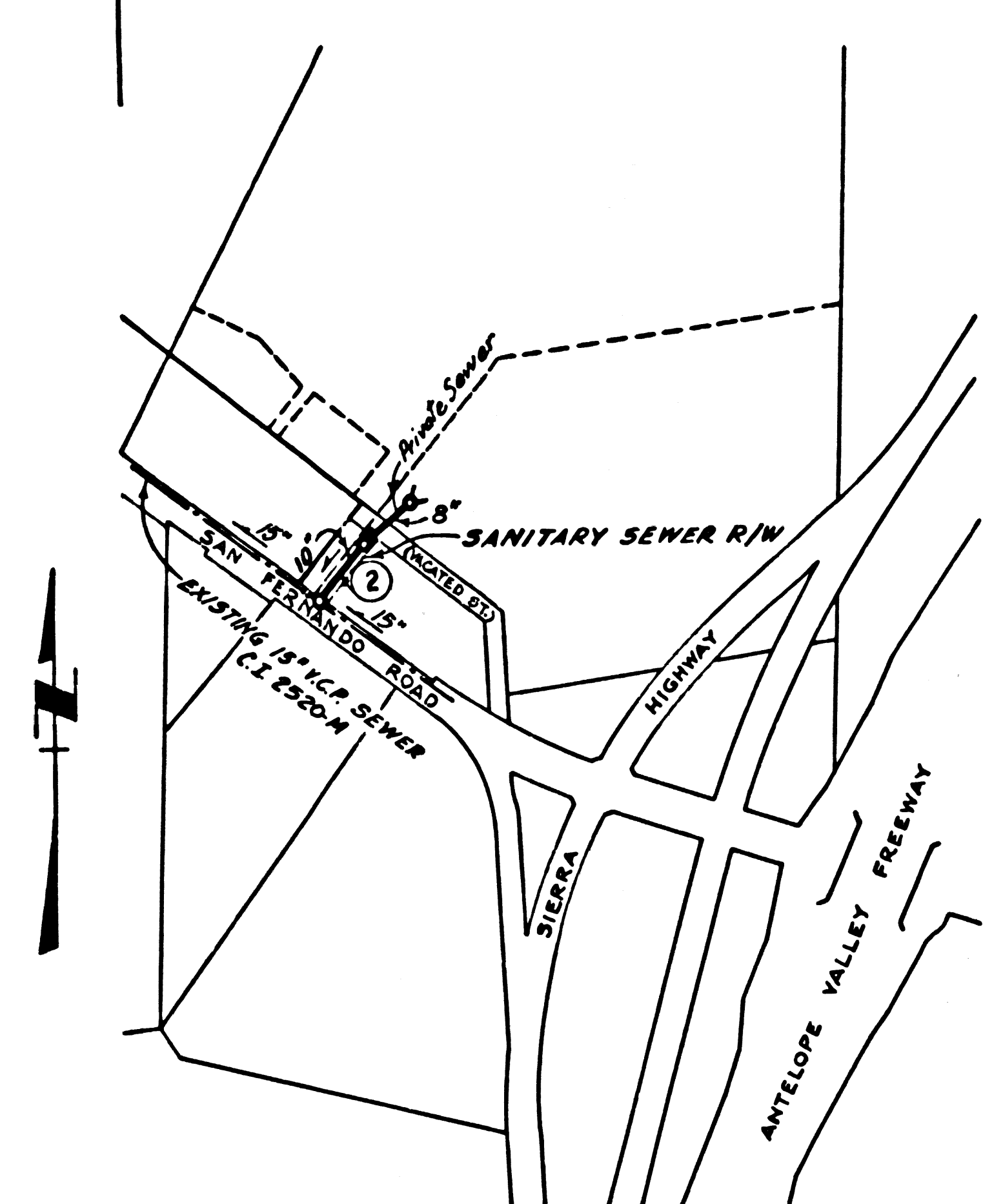
PRIVATE CONTRACT NO. 9017
 246-5-133

W.S. 62
 1 SHEET, 2 PAGES

SCALE: VERT. 1"=4'
 HORIZ. 1"=40'
JANUARY, 1975
 PREPARED IN THE OFFICES OF
MEM INC.

BY: *Diana A. Julla*
 REG. C.E. No. 20511

B.M. B.L. 2923 ELEV. 1331.703 (ADJUSTED 1972)
 1/4 A.M. IN CULVERT. HEADWALL 50' N.
 OF E. OF SAN FERNANDO RD. @ HIGHWAY
 MARKER B139+40 ON W. BOUNDARY NEWHALL
 RANGER STA. 0.4 MI. W. OF SIERRA HIGHWAY.
 NEWHALL QUAD. 1962



P. C. 9017
INDEX MAP
 SCALE: 1"=500'

GENERAL NOTES:

1. ELEVATIONS ARE IN FEET ABOVE U.S.C. & G.S. SEA LEVEL DATUM OF 1929.
2. NO REVISIONS ARE TO BE MADE IN THESE PLANS WITHOUT THE APPROVAL OF THE COUNTY ENGINEER.
3. NO REPRESENTATIVE OF THE COUNTY ENGINEER WILL SURVEY OR LAY OUT ANY PORTION OF THE WORK.
4. GRADES TO WHICH THIS IMPROVEMENT IS TO BE CONSTRUCTED ARE SHOWN ON PLANS AND PROFILES. GRADE POINTS FOR TOP OF CURB, CENTER LINE OF STREET, OR CENTER LINE OF ALLEY ARE SHOWN BY CHECKS ON PROFILES. AT ALL POINTS BETWEEN DESIGNATED POINTS THE GRADE SHALL BE ESTABLISHED SO AS TO CONFORM TO A STRAIGHT LINE DRAWN BETWEEN SAID DESIGNATED POINTS.
5. THE PRIVATE ENGINEER SHALL FURNISH THE COUNTY ENGINEER WITH GRADE SHEETS AND STATIONING FOR ALL HOUSES, GARAGES, AND "T" OR "Y" BRANCHES AND SHALL PROVIDE STAKES FOR THEM AT THEIR PROPER LOCATIONS WITH STATIONING PLAINLY MARKED. ALL HOUSES, GARAGES, AND BRANCHES SHALL BE CONSTRUCTED IN ACCORDANCE WITH THE GRADES AND STATIONING SHOWN ON THESE PLANS. ANY CHANGE IN ALIGNMENT SHALL BE REQUESTED BY WRITING BY THE PRIVATE ENGINEER.
6. THE PRIVATE ENGINEER SHALL FURNISH THE COUNTY ENGINEER WITH THE PROFILES AND STATIONING FOR ALL HOUSES, GARAGES, AND BRANCHES. THE PRIVATE ENGINEER SHALL BE RESPONSIBLE FOR THE ACCURACY OF THE PROFILES AND STATIONING.
7. BEFORE WORK CAN BE STARTED, THE CONTRACTOR MUST OBTAIN A PERMIT TO EXCAVATE IN COUNTY STREETS FROM THE L.A. COUNTY ROAD DEPT., DISTRICT OFFICE NO. 3, AND PAY A FEE TO THE COUNTY ENGINEER, ROOM 184, 408 N. 8th St., LOS ANGELES, CALIFORNIA. OR SANTA CLARITA VALLEY REGIONAL OFFICE, TO COVER THE COST OF CONSTRUCTION INSPECTION AND RECORD PLANS.
8. IF WORK IS TO BE DONE IN A STATE HIGHWAY, A PERMIT MUST BE OBTAINED FROM THE STATE OF CALIFORNIA, DIVISION OF HIGHWAYS, 130 SOUTH SPRING STREET, LOS ANGELES, CALIFORNIA.
9. APPROVAL OF THIS PLAN BY THE COUNTY OF LOS ANGELES DOES NOT CONSTITUTE A REPRESENTATION AS TO THE ACCURACY OF THE LOCATION OR OF THE EXISTENCE OR NON-EXISTENCE OF ANY UNDERGROUND UTILITY PIPE, OR STRUCTURE WITHIN THE LIMITS OF THE PROJECT. THIS NOTE APPLIES TO ALL PAGES.
10. REFER TO SECTION 718.41 OF THE STANDARD SPECIFICATIONS, REGARDING SAFETY CORDS.
11. **FOR THE ISSUANCE OF THE REQUIRED SEWER CONSTRUCTION PERMIT BY THE COUNTY ENGINEER THE CONTRACTOR SHALL OBTAIN A PERMIT TO EXCAVATE FROM THE STATE OF CALIFORNIA, DIVISION INDUSTRIAL SAFETY.**

COUNTY SANITATION DISTRICTS SHALL BE NOTIFIED 24 HOURS IN ADVANCE OF THE FOLLOWING SO THAT REQUIRED INSPECTION CAN BE MADE:
 (PHONE: 962-6605 - 628-1161)

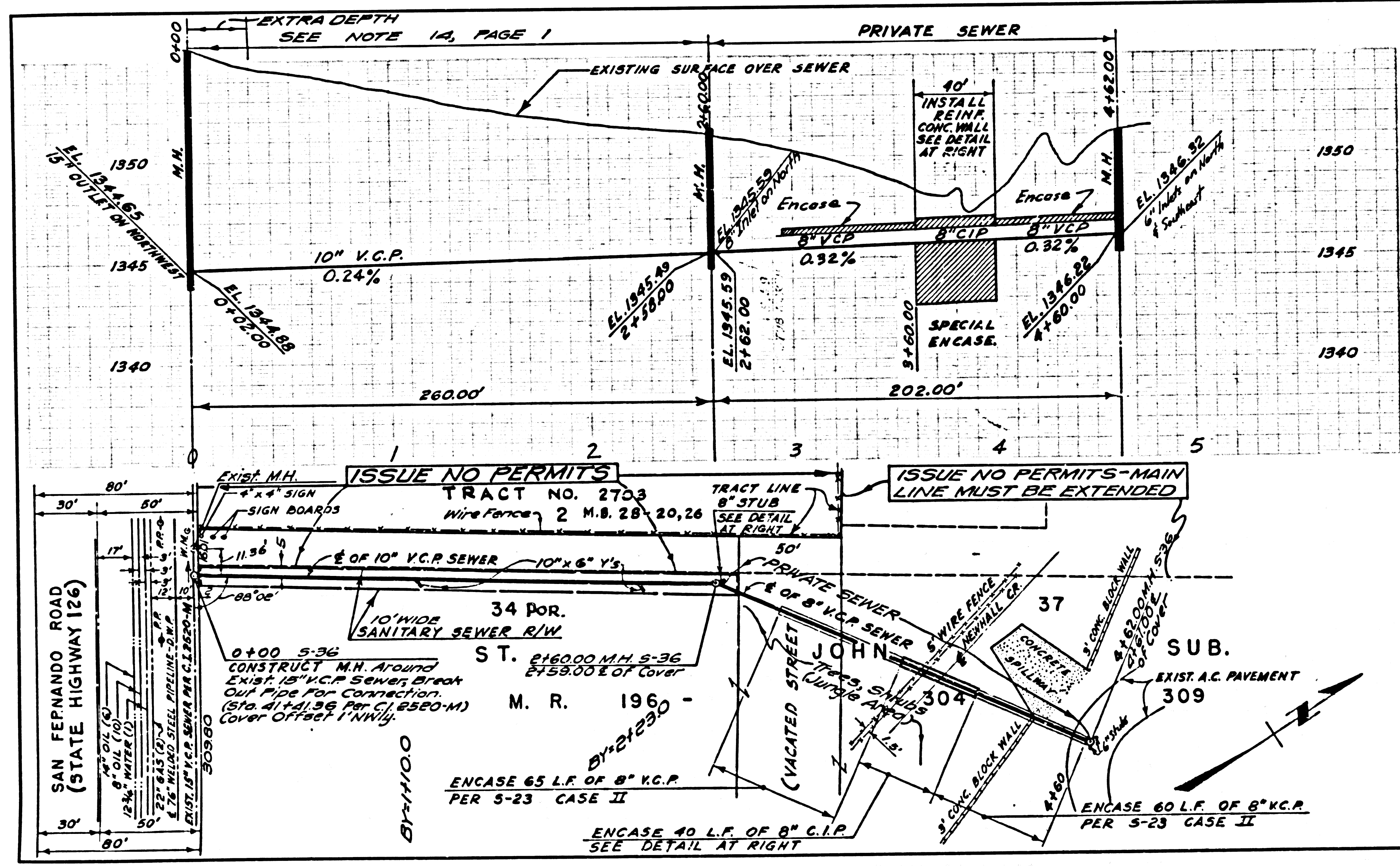
CONSTRUCTION NOTES:

1. WORK SHALL BE CONSTRUCTED ACCORDING TO THE STANDARD SPECIFICATIONS FOR PUBLIC WORKS CONSTRUCTION (1972 EDITION) WITH THE SUPPLEMENT, AND COUNTY ENGINEER SPECIAL PROVISIONS FOR THE CONSTRUCTION OF SANITARY SEWERS DATED MARCH 1, 1974 AND AS AMENDED BY THE COUNTY ENGINEER.
2. THE CONTRACTOR SHALL NOTIFY THE DESIGN DIVISION BY TELEPHONE (213) 974-7283, AT LEAST TWENTY-FOUR HOURS BEFORE STARTING ANY WORK UNDER THIS CONTRACT.
3. **NO CONNECTION FOR THE DISPOSAL OF INDUSTRIAL WASTES SHALL BE MADE TO SEWERS SHOWN ON THESE DRAWINGS UNTIL A PERMIT FOR INDUSTRIAL WASTE WATER DISCHARGE HAS BEEN ISSUED BY THE SANITATION DISTRICTS FOR SAID CONNECTION.**
4. ALL JOINTS BETWEEN CAST IRON PIPE AND VITRIFIED CLAY PIPE SHALL BE MADE WITH A RUBBER SLEEVE JOINT, TYPE "C" OR "B", WITH RUSHING IF NECESSARY PER STANDARD SPECIFICATIONS, SECTION 308-2.
5. SEWERS TO BE TESTED FOR LEAKAGE PER SECTION 308-1.6 OF THE STANDARD SPECIFICATIONS AND SPECIAL PROVISIONS.
6. RESURFACE ALL TRENCHES WITHIN PAVED AREAS TO MEET L.A. COUNTY ROAD DEPT. OR CALIFORNIA STATE HIGHWAY REQUIREMENTS IN ACCORDANCE WITH PERMITS.
7. SPECIAL BACKFILL IN EASEMENT CONSTRUCTION
 A. BACKFILL TRENCH AND REPLACE OTHER EARTH SO AS TO ACHIEVE THE NATURAL OR FINISHED GRADES AND SLOPES SHOWN ON THE GRADING PLAN APPROVED FOR THIS DEVELOPMENT BY THE BUILDING AND SAFETY DIVISION.
 B. ALL BACKFILL AND EARTH REPLACES SHALL BE COMPACTED TO A MINIMUM OF 90% OF MAXIMUM DENSITY PER A.S.T.M. STANDARD METHOD OF TEST D-698-57T AS MODIFIED. ACCEPTABLE CERTIFICATION OF SUCH COMPACTION SHALL BE SUBMITTED TO THE DESIGN DIVISION.

LEGEND	NO.
MINIMUM PUBLIC SAFETY REQUIREMENTS	5-1
BRICK MANHOLE	5-2
STANDARD MANHOLE STEP	5-7
BRICK FOR SEWER PIPE	5-8
CLADDING AND ENCASING	5-9
WIRE OR THE SURFACE	5-10
ALLOWABLE TRENCH WIDTHS	5-11
LOCKING MANHOLE FRAME AND COVER	5-12
NON-REINFORCED PRECAST CONCRETE MANHOLE	5-13
BREAKING INTO BRICK OR PRECAST CONCRETE MANHOLE	5-14

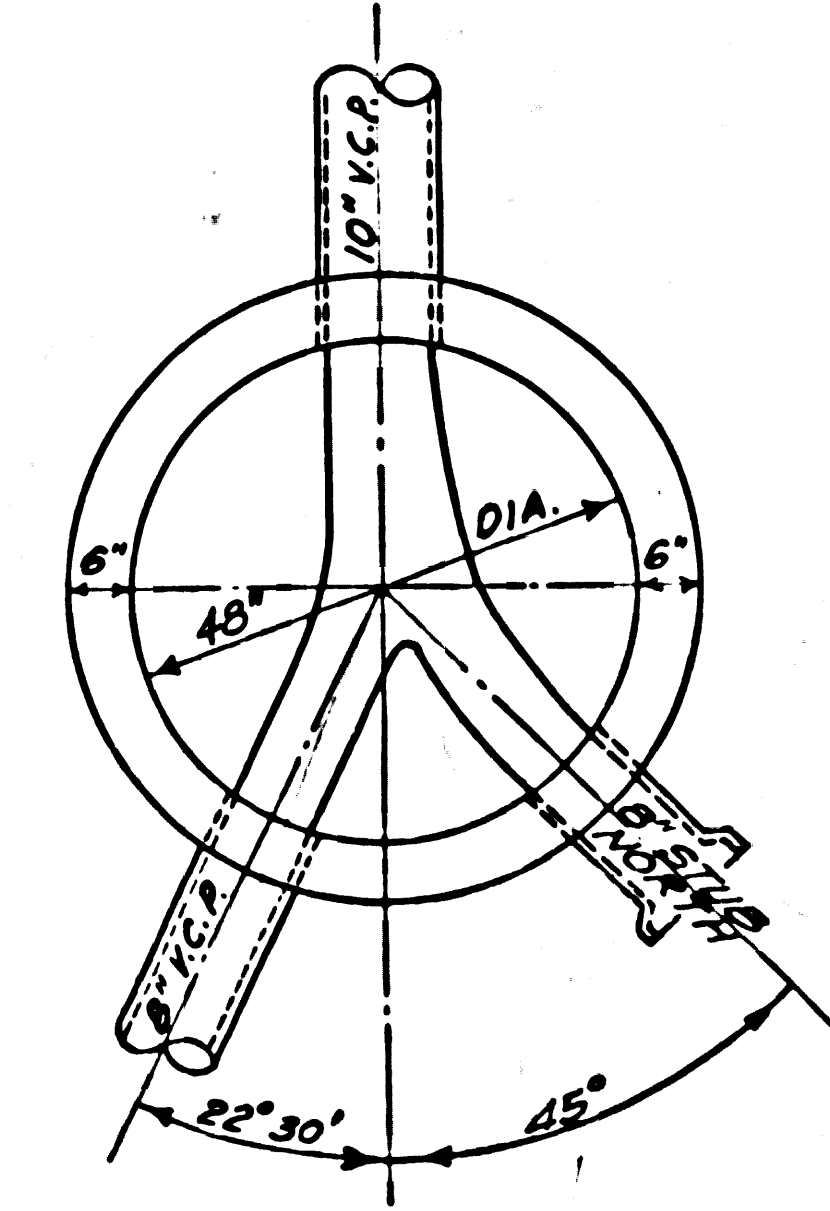
45231

COUNTY OF LOS ANGELES, CALIFORNIA
 HARVEY T. BRANDT COUNTY ENGINEER JOHN D. PARKHURST, CHIEF ENGINEER
 APPROVED *Amundt C. C. 11/15/75* APPROVED *H. Vortmeier*
 COUNTY ENGINEER DISTRICT ENGINEER
 CHECKED *Richard J. Gelnick 1/15/75*
 REG. C.E. NO. 12390
 SANTA CLARITA VALLEY BLDG. DIST. 8-2 I.N. 037227



REINFORCED CONCRETE WALL DETAIL
 SCALE: 1"=2'

8" V.C.P. STUB DETAIL - STA. 2+60
 SCALE: 1"=2'



NO CHARGE FOR CONNECTIONS

45232