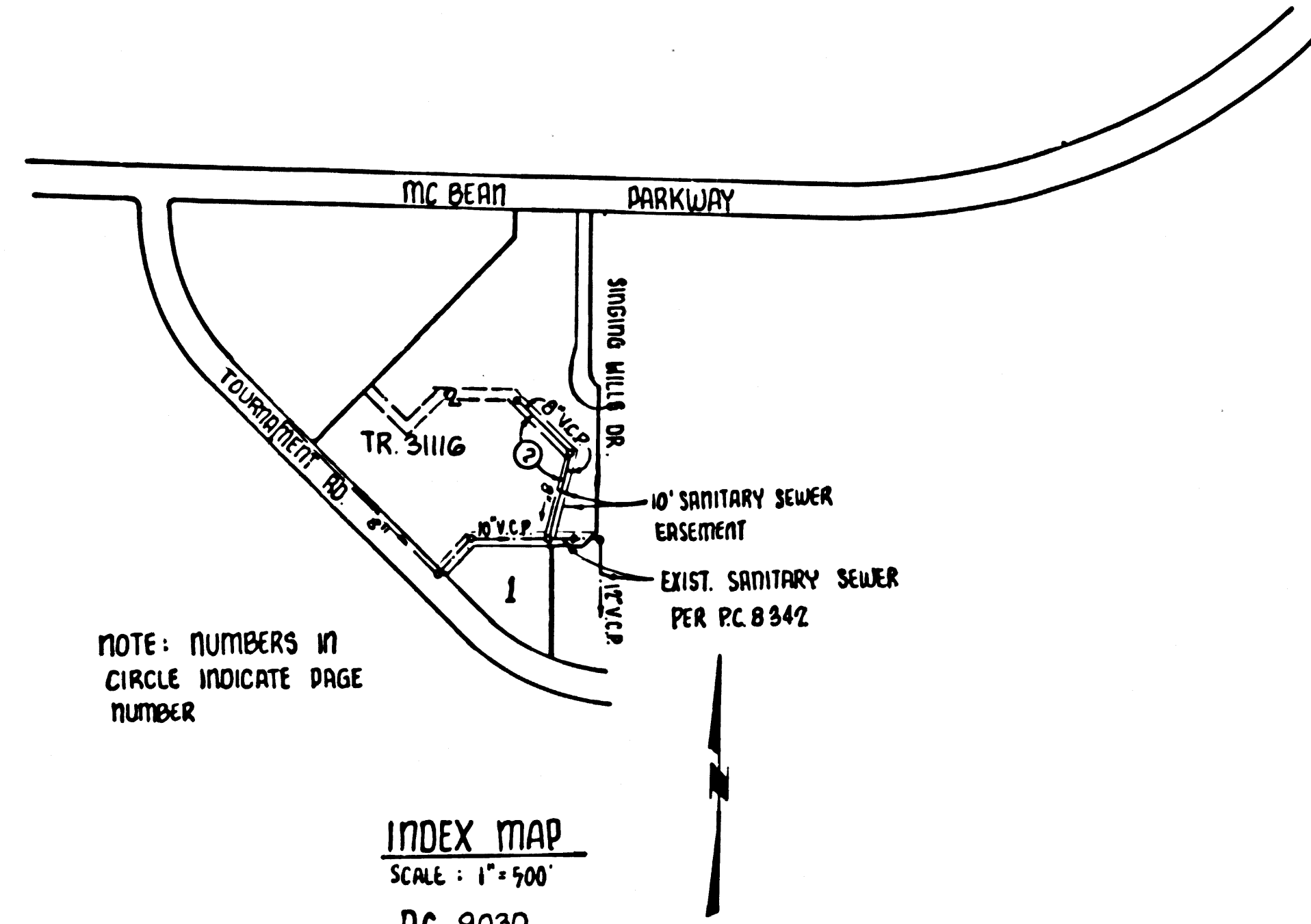


B.M. 31 641 ELEV. 1262.066  
 Road Dept. B.M. 149 in N side of conc. base  
 @ N.E. Cor. Edison tower N<sup>o</sup> M-573W-3, 35'  
 S of & of Lyons Ave. & 30' E. of Willey Canyon Rd  
 Newhall QUAD. 19 65



- GENERAL NOTES:**
- ELEVATIONS ARE IN FEET ABOVE U.S.C. & G.S. SEA LEVEL DATUM OF 1929.
  - NO REVISIONS SHALL BE MADE IN THESE PLANS WITHOUT THE APPROVAL OF THE COUNTY ENGINEER.
  - NO REPRESENTATIVE OF THE COUNTY ENGINEER WILL SURVEY OR LAY OUT ANY PORTION OF THE WORK.
  - GRADES TO WHICH THIS IMPROVEMENT IS TO BE CONSTRUCTED ARE SHOWN ON PLANS AND PROFILES. GRADE POINTS FOR TOP OF CURBS, CENTER LINE OF STREETS, OR CENTER LINE OF ALLEYS ARE SHOWN BY CIRCLES ON PROFILES AT ALL POINTS BETWEEN DESIGNATED POINTS. THE GRADE SHALL BE ESTABLISHED SO AS TO CONFORM TO A STRAIGHT LINE DRAWN BETWEEN SAID DESIGNATED POINTS.
  - THE PRIVATE ENGINEER SHALL FURNISH THE COUNTY ENGINEER WITH GRADE SHEETS AND STATIONING FOR ALL PROPOSED MANHOLES AND "T" OR "Y" BRANCHES AND SHALL PROVIDE STAKES FOR THEM AT THEIR PROPER LOCATIONS WITH STATIONING PLAINLY SHOWN. THE PRIVATE ENGINEER SHALL FURNISH THE COUNTY ENGINEER WITH GRADE SHEETS AND STATIONING FOR ALL PROPOSED MANHOLES AND "T" OR "Y" BRANCHES AS SHOWN ON THE PLANS. HOUSE LATERALS FROM EXISTING SEWERS SHALL NOT EXCEED THE HORIZONTAL DISTANCE OF 10 FEET FROM THE MAIN LINE SEWER. ANY CHANGE IN ALIGNMENT SHALL BE REQUESTED IN WRITING BY THE PRIVATE ENGINEER.
  - THE PRIVATE ENGINEER SHALL FURNISH THE HOUSE LATERAL SEWER AT THE PROPERTY LINE BELOW THE TOP OF CURB ELEVATION FOR EACH HOUSE LATERAL ON THE GRADE SHEET.
  - BEFORE WORK CAN BE STARTED, THE CONTRACTOR MUST OBTAIN A PERMIT TO EXCAVATE IN COUNTY SEWERS FROM THE COUNTY ENGINEER. THE CONTRACTOR SHALL PAY A FEE TO THE COUNTY ENGINEER, ROOM 19, 5150 E. FURZEL, SANTA CLARITA, CALIF. OR SANTA CLARITA VALLEY REGIONAL OFFICE, TO COVER THE COST OF CONSTRUCTION INSPECTION AND RECORD PLANS.
  - IF WORK IS TO BE DONE ON A STATE HIGHWAY, A PERMIT MUST BE OBTAINED FROM THE STATE OF CALIFORNIA, DIVISION OF HIGHWAYS, 150 SOUTH BROAD STREET, LOS ANGELES, CALIFORNIA.
  - APPROVAL OF THIS PLAN BY THE COUNTY OF LOS ANGELES DOES NOT CONSTITUTE A REPRESENTATION AS TO THE ACCURACY OF THE LOCATION OR OF THE EXISTENCE OR NON-EXISTENCE OF ANY UNDERGROUND UTILITY PIPE, OR STRUCTURE WITHIN THE LIMITS OF THIS PROJECT. THIS NOTE APPLIES TO ALL PAGES.
  - REFER TO SECTION 7-10.41 OF THE STANDARD SPECIFICATIONS, REGARDING SAFETY ORDERS.
  - PRIOR TO THE ISSUANCE OF THE REQUIRED SEWER CONSTRUCTION PERMIT BY THE COUNTY ENGINEER, THE CONTRACTOR SHALL OBTAIN A PERMIT TO EXCAVATE FROM THE STATE OF CALIFORNIA, DIVISION OF INDUSTRIAL SAFETY.**

PRIVATE CONTRACT NO. 9030  
 INDEX 295 5 117

W.S. 63  
 SHEET 2 PAGES  
 SCALE: VERT. 1"=4'  
 HORIZ. 1"=40'  
 MARCH, 1974  
 PREPARED IN THE OFFICES OF  
 SIKARD ENGINEERING ASSOCIATES  
 19209 BURBANK BLVD.  
 VAN NUYS, CALIF.  
 BY: *Ronald R. Horn*  
 REG. C. E. No. 16913

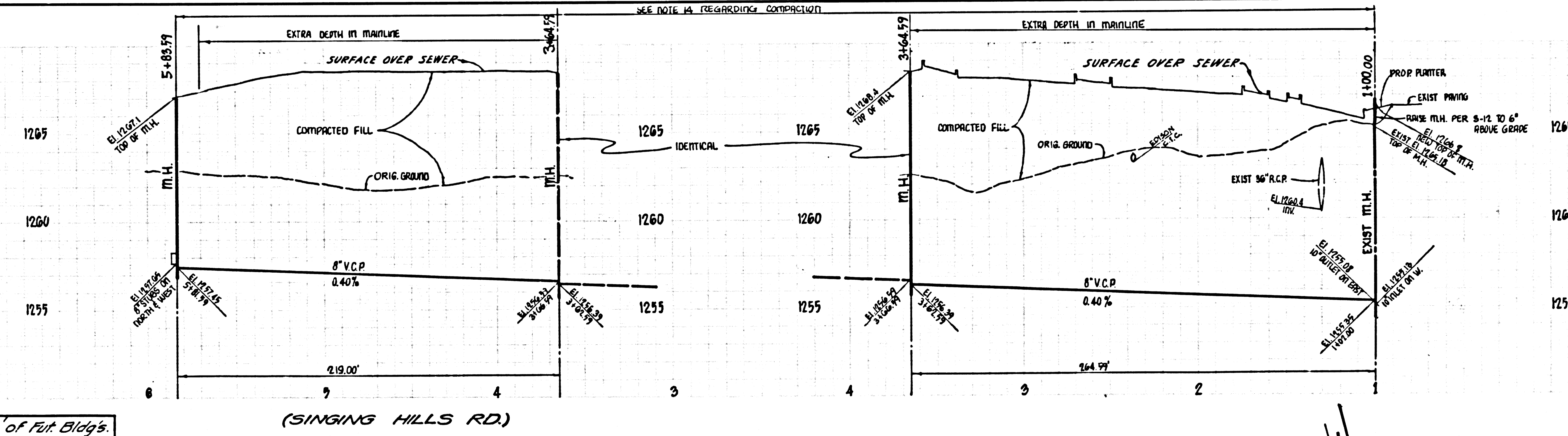
- CONSTRUCTION NOTES:**
- WORK SHALL BE CONSTRUCTED ACCORDING TO THE STANDARD SPECIFICATIONS FOR PUBLIC WORKS CONSTRUCTION (1973 EDITION) WITH THE SUPPLEMENTS AND COUNTY ENGINEER SPECIAL PROVISIONS FOR THE CONSTRUCTION OF SANITARY SEWERS DATED MAY 1974. ANY CHANGES SHALL BE PROSECUTED ONLY IN THE PRESENCE OF THE COUNTY ENGINEER.
  - THE CONTRACTOR SHALL NOTIFY THE DIVISION BY TELEPHONE (213) 874-7263 AT LEAST TWENTY-FOUR HOURS BEFORE STARTING ANY WORK UNDER THIS CONTRACT.
  - HOUSE LATERALS TO BE CONSTRUCTED WITH APPROX. AT PROPERTY LINE 6 FEET BELOW CURB GRADE EXCEPT AS NOTED.
  - WYE OR TEE BRANCHES MAY BE USED FOR CONNECTIONS TO MAINLINE SEWERS EXCEPT AS NOTED.
  - ALL STRUCTURES SHALL BE EITHER BRICK MANHOLES PER 8.2 OR PRECAST CONCRETE MANHOLES PER 8.26, EXCEPT AS NOTED.
  - PROVIDE STAKES ON THE PROPERTY LINE OR PROPERTY LINES PRODUCED AT RIGHT ANGLES TO THE SEWER LINE AT THE CENTER LINE OF EACH MANHOLE.
  - MANHOLE TOPS IN UNIMPROVED RIGHTS OF WAY TO BE SIX INCHES ABOVE FINISHED GRADE.
  - INTERFERE CLAY PIPE JOINTS SHALL BE THE "B", "F", "C" OR "D" PER STANDARD SPECIFICATIONS SECTION 308-2.
  - IF A POWER POLE IS WITHIN THREE FEET OF THE SEWER, THE SEWER SHALL BE ENCASED, PER 8.23, CASE II, TWO FEET ON EACH SIDE FROM THE POINT OF INTERFERENCE.
  - IF DURING THE COURSE OF CONSTRUCTION IT IS DETERMINED THAT THERE IS LESS THAN FOUR FEET OF COVER OVER THE TOP OF A MAIN LINE OR HOUSE LATERAL V.C.P. SEWER WHICH IS NOT INDICATED ON THE PLANS, THE PIPE SHALL BE ENCASED PER 8.23, CASE II UNLESS OTHERWISE APPROVED BY THE COUNTY ENGINEER.
  - ALL JOINTS BETWEEN CAST IRON PIPE AND VITRIFIED CLAY PIPE SHALL BE MADE WITH A RUBBER SLEEVE JOINT, TYPE "C" OR "D", WITH RUBBER IN NECESSARY PER STANDARD SPECIFICATIONS, SECTION 308-2.
  - SEWERS TO ALL TESTED FOR LEAKAGE PER SECTION 308-A.6 OF THE STANDARD SPECIFICATIONS AND SPECIAL PROVISIONS.
  - INSURE ALL TRENCHES WITHIN PAVED AREAS TO MEET L.A. COUNTY ROAD DEPT. OR CALIFORNIA STATE HIGHWAY REQUIREMENTS IN ACCORDANCE WITH PERMITS.
  - SPECIAL BACKFILL IN EASEMENT CONSTRUCTION:**  
 (a) Should the trench and replace, other earth removed so as to achieve the natural or finished grade as shown on the grading plan approved for this development by the Building & Safety Division.  
 (b) All backfill and earth replaced shall be compacted to a min. of 90% of the max. density per A.S.T.M. standard method of test D-1557-71T as modified.  
 Acceptable certification of such compaction shall be submitted to the Construction Division.

THE FOLLOWING LATEST REVISED STANDARD PLANS ON FILE IN THE OFFICE OF THE COUNTY ENGINEER SHALL APPLY IN THE CONSTRUCTION OF THIS PROJECT.

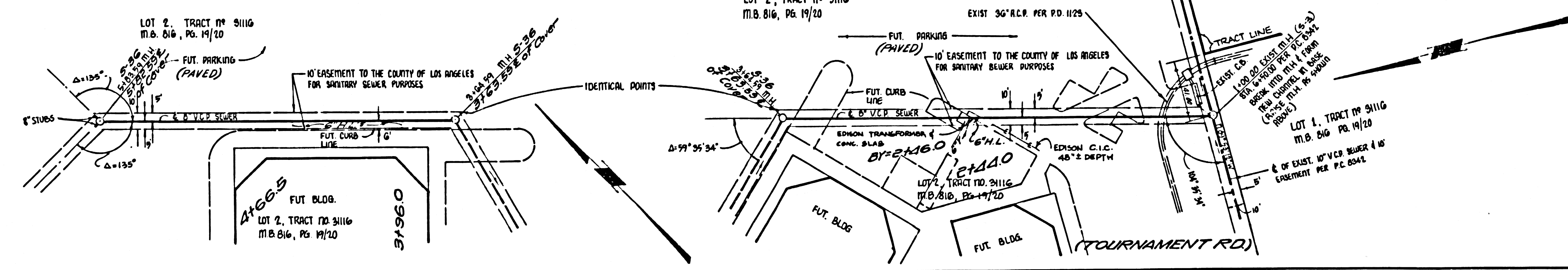
| LEGEND                                |      |
|---------------------------------------|------|
| MINIMUM PUBLIC SAFETY REQUIREMENTS    | 8-2  |
| BRICK MANHOLE                         | 8-3  |
| STANDARD MANHOLE STEP                 | 8-17 |
| SEEDING FOR SEWER PIPE                | 8-21 |
| CRADLING AND ENCASEMENT               | 8-23 |
| WYE OR TEE SUPPORT                    | 8-26 |
| ALLOWABLE TRENCH WIDTHS               | 8-28 |
| LOCKING MANHOLE FRAME AND COVER       | 8-28 |
| NON-RUBBERED PRECAST CONCRETE MANHOLE | 8-26 |
| RECONSTR. OF BRICK MANHOLE TOPS       | 8-12 |

COUNTY OF LOS ANGELES, CALIFORNIA  
 HARVEY T. BRANDT, COUNTY ENGINEER  
 JOHN D. PARKHURST, CHIEF ENGINEER  
 APPROVED *R. Horn* 4/5/74 ASSISTANT DIVISION ENGINEER (DATED)  
 APPROVED *J. Posthumus* (DATED)  
 CHECKED *Ronald R. Horn* 4/5/74 (DATED)  
 REG. C.E. NO. 14390  
 SANTA CLARITA VALLEY BLDG. DIST. 8.2 J.N. 0372.29

NOTE:  
 CONTRACTOR IS RESPONSIBLE FOR ADJUSTMENT OF MANHOLE TOPS TO FINISHED PAVEMENT ELEVATION WHERE APPLICABLE.



Note: 6" H.L. Constructed To Within 5' of Fut. Bldgs.



NO CHARGE FOR CONNECTIONS

44848