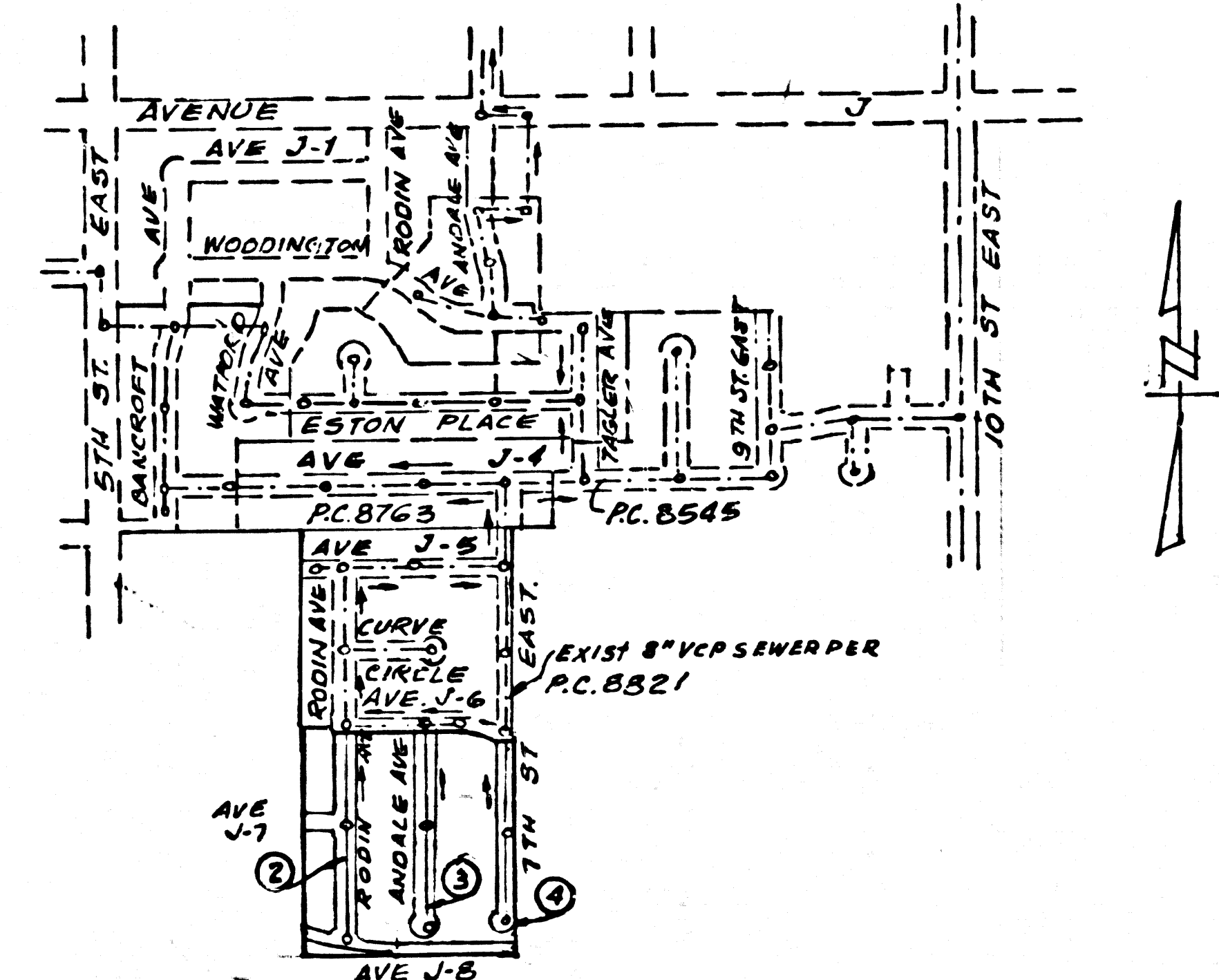


LANCASTER BLDG. DIST. NO. 8

PRIVATE CONTRACT NO. 9031

B.M. B.L. 65 ELEV. 2391.642
 C.S. MON. IN WELL @ INTERSECTION
 AVENUE J AND 5TH STREET EAST
 M.K.D., T.7N., R.12W., 1/4 COR. 14-23, E. EDGE
 LANCASTER QUAD. 19 65

REVISION: 4/21/77
 PAGE No. 2 - REVISED TOP OF CURB ELEVATIONS UP TO 0.3'
 AND REVISED SEWER BY 0.3'
 PAGE No. 3 - REVISED TOP OF CURB ELEVATIONS & SEWER BY 0.3'
 PAGE No. 4 - REVISED TOP OF CURB ELEVATIONS BY UP TO 0.3'
 AND REVISED SEWER BY 0.34'
 APPROVED *R.L. Kopecky 4/15/77*
 Office of County Engineer R.C.E. 16742



INDEX MAP
 SCALE: 1"=600'
 P.C. NO. 9031
 TRACT NO. 29073

REVISION: 5/10/77
 PAGE 3 - CHANGED ELEVATION AT M.H.
 7+16.00 TO 2400.54
 APPROVED *R.L. Kopecky 5/10/77*
 Office of County Engineer R.C.E. 16742

- THE FOLLOWING COUNTY ENGINEER
 STANDARD PLANS APPLY TO THIS PROJECT
- LEGEND _____ S-1
 - MINIMUM EXCAVATION SAFETY REQUIREMENTS. S-2
 - BRICK MANHOLE _____ S-3
 - LOCKING MANHOLE FRAME & COVER _____ S-35
 - MANHOLE STEPS _____ S-17
 - BEDDING FOR SEWER PIPE _____ S-21
 - WYE OR TEE SUPPORT _____ S-26
 - ALLOWABLE TRENCH WIDTHS _____ S-33
 - NON-RIENF. PRECAST CONC. MANHOLE _____ S-36

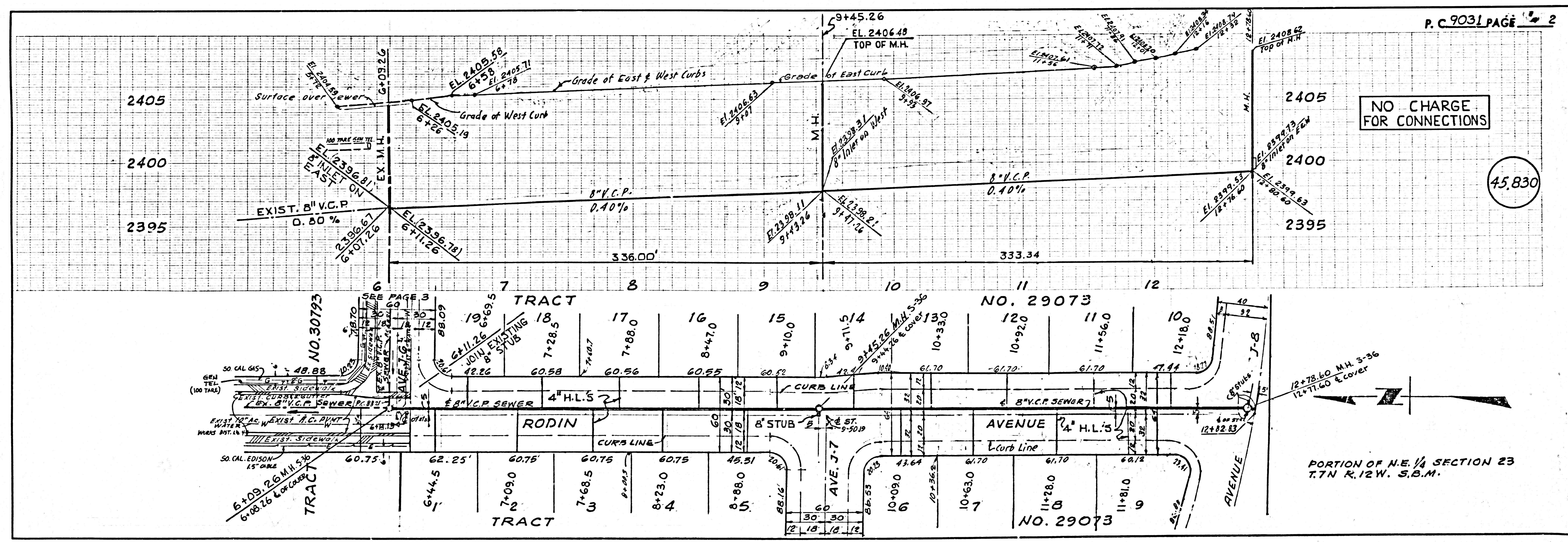
NO CONNECTION FOR THE DISPOSAL OF INDUSTRIAL WASTES
 SHALL BE MADE TO SEWERS SHOWN ON THESE DRAWINGS UNLESS
 A PERMIT FOR INDUSTRIAL WASTE WATER DISCHARGE HAS BEEN
 ISSUED BY THE SANITATION DISTRICTS FOR SAID CONNECTION.
 BEFORE BREAKING INTO OR CONSTRUCTION ON A COUNTY
 SANITATION DISTRICT SEWER AND PRIOR TO FINAL ACCEPTANCE
 OF THE PROJECT SANITATION DISTRICT INSPECTORS SHALL
 BE NOTIFIED BY PHONE 555-5555, SO THAT REQUIRED INSPECTION
 CAN BE MADE.

- NOTES:
1. PROVIDE STAKES ON THE PROPERTY LINE OR PROPERTY LINES PRODUCED AT RIGHT ANGLES TO THE SEWER LINE AT THE CENTER LINE OF EACH MANHOLE.
 2. NO REPRESENTATIVE OF THE COUNTY ENGINEER WILL SURVEY OR LAY OUT ANY PORTION OF THE WORK.
 3. THE PRIVATE ENGINEER SHALL FURNISH THE COUNTY ENGINEER WITH GRADE SHEETS AND STATIONING FOR ALL HOUSE LATERALS AND "T" BRANCHES AND SHALL PROVIDE STAKES FOR THEM AT THEIR PROPER LOCATIONS WITH STATIONING PLAINLY MARKED. ALL HOUSE LATERALS SHALL BE CONSTRUCTED IN A STRAIGHT ALIGNMENT AT RIGHT ANGLES FROM THE MAIN LINE SEWER EXCEPT AS SHOWN ON THE PLANS. HOUSE LATERALS FROM CHIMNEYS SHALL NOT HAVE AN ANGLE OF LESS THAN 45° WITH THE MAIN LINE SEWER. ANY CHANGE IN ALIGNMENT SHALL BE REQUESTED IN WRITING BY THE PRIVATE ENGINEER.
 4. THE PRIVATE ENGINEER SHALL FURNISH THE HOUSE LATERAL DEPTH AT THE PROPERTY LINE BELOW THE TOP OF CURB ELEVATION FOR EACH HOUSE LATERAL ON THE GRADE SHEET.
 5. NO REVISIONS SHALL BE MADE IN THESE PLANS WITHOUT THE APPROVAL OF THE COUNTY ENGINEER.
 6. THE CONTRACTOR SHALL NOTIFY THE DESIGN DIVISION BY TELEPHONE, 813-974-7283, AT LEAST TWENTY-FOUR HOURS BEFORE STARTING ANY WORK UNDER THIS CONTRACT.
 7. MANHOLES SHALL BE BRICK SEWER STRUCTURES PER S-36, PRECAST CONCRETE MANHOLES PER S-35.
 8. ALL JOINTS BETWEEN CAST IRON PIPE AND VITRIFIED CLAY PIPE SHALL BE MADE WITH A RUBBER SLEEVE JOINT TYPE "E" OR "D" WITH WASHING IF NECESSARY PER THE SPECIFICATIONS, SECTION 208-2.
 9. "T" OR "Y" BRANCHES MAY BE USED FOR CONNECTIONS TO MAINLINE SEWER EXCEPT AS NOTED.
 10. VITRIFIED CLAY PIPE JOINTS SHALL BE TYPE "D", "F", OR "G" PER STANDARD SPECIFICATIONS, SECTION 208-2.
 11. IF A POWER POLE IS WITHIN THREE FEET OF THE SEWER, THE SEWER SHALL BE ENCASED, PER S-23, TWO FEET ON EACH SIDE FROM THE POINT OF INTERFERENCE.
 12. IF DURING THE COURSE OF CONSTRUCTION IT IS DETERMINED THAT THERE IS LESS THAN FOUR FEET OF COVER OVER THE TOP OF A MAIN LINE OR HOUSE LATERAL V.C.P. SEWER WHICH IS NOT INDICATED ON THE PLANS, THE PIPE SHALL BE ENCASED PER S-23, UNLESS OTHERWISE APPROVED BY THE COUNTY ENGINEER.
 13. HOUSE LATERALS TO BE CONSTRUCTED WITH INVERTS AT PROPERTY LINE 4 FEET BELOW CURB GRADE EXCEPT AS NOTED.
 14. REINFORCE ALL TRENCHES WITHIN PAVED AREAS TO MEET L.A. COUNTY ROAD DEPT. OR CALIFORNIA STATE HIGHWAY REQUIREMENTS IN ACCORDANCE WITH PERMITS.
 15. SEWERS TO BE TESTED FOR LEAKAGE PER SEC. 306-11.4 OF THE STANDARD SPEC'S.
 16. PRIOR TO THE ISSUANCE OF A SEWER CONSTRUCTION PERMIT FROM THE COUNTY ENGINEER, THE CONTRACTOR SHALL OBTAIN A PERMIT TO EXCAVATE FROM THE STATE OF CALIFORNIA DIVISION OF CONSTRUCTION.
 17. FULL COMPLIANCE WITH SEC. 306-13.5 OF THE STANDARD SPECIFICATIONS OF BACKFILL COMPACTION AND SAID EQUIVALENTS BY QUALIFIED REGISTERED TESTING LABORATORY SHALL BE PROVIDED BY THE PERMITTEE PRIOR TO THE ISSUANCE OF A CERTIFICATE OF PARTIAL ACCEPTANCE.
 18. REFER TO SEC. 7-10.4-1 OF THE STANDARD SPECIFICATIONS REGARDING SAFETY ORDERS.

NOTICE TO CONTRACTOR
 The existence and location of any underground utility pipes or structures shown on these plans are obtained by a search of the available records. To the best of my knowledge there are no existing utilities except as shown on these plans. The contractor is required to take due precautionary measures to protect the utility lines shown and any other lines not of record or not shown on these plans.
Arthur Skovsted
 R.C.E. 8805

W.S. 70
 2 SHEETS; 4 PAGES
 SCALE: VERT. 1"=4' HORIZ. 1"=40'
 DCT. 1976
 45,829
 PREPARED IN THE OFFICES OF
R.G. ROSENTHAL
 687 North Palm Canyon Drive
 Palm Springs, Calif. 92262
 REG. C. E. NO. 8805
 FOR LEGEND SEE PLAN NO. S-1

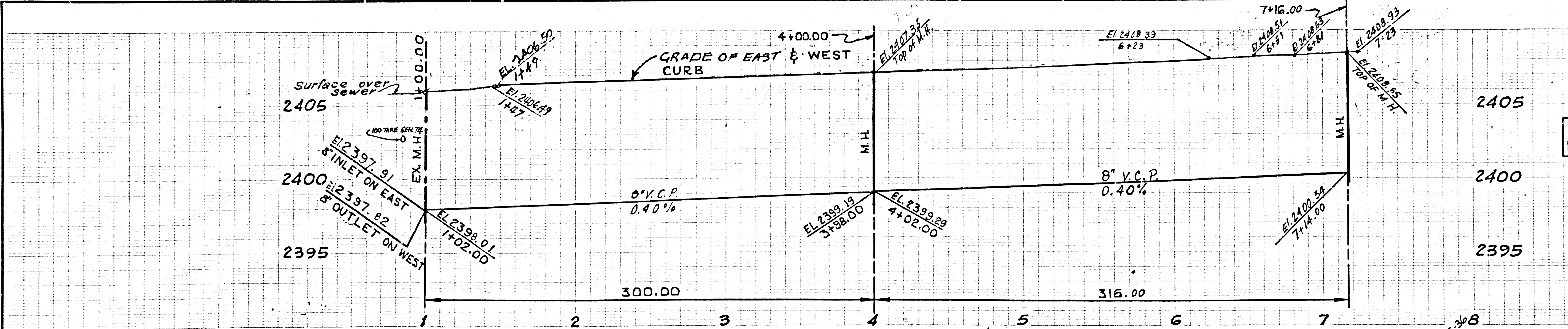
COUNTY OF LOS ANGELES, CALIFORNIA
 COUNTY ENGINEER
 J. D. PARKHURST, CHIEF ENGINEER
 APPROVED *R.L. Kopecky 3/16/77*
 REGIONAL ENGINEER
 APPROVED BY *Arthur Skovsted 3/16/77*
 OFFICE ENGINEER
 J.N. 0250.02



NO CHARGE FOR CONNECTIONS

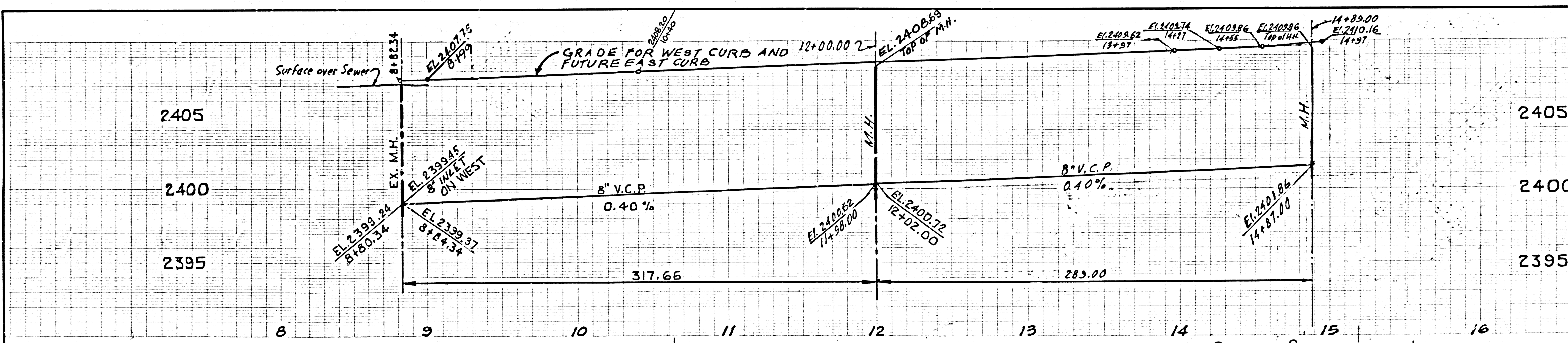
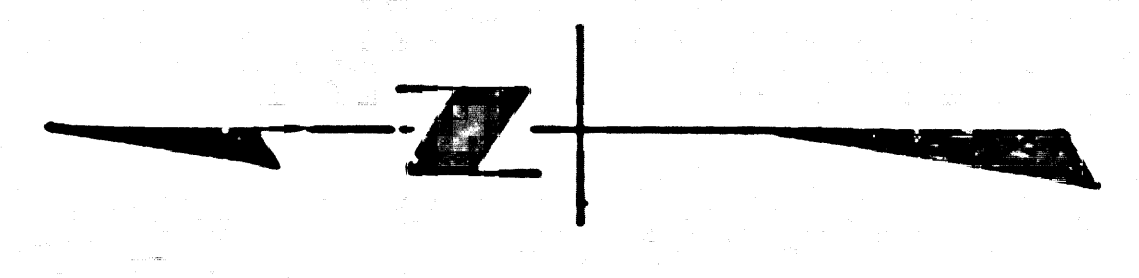
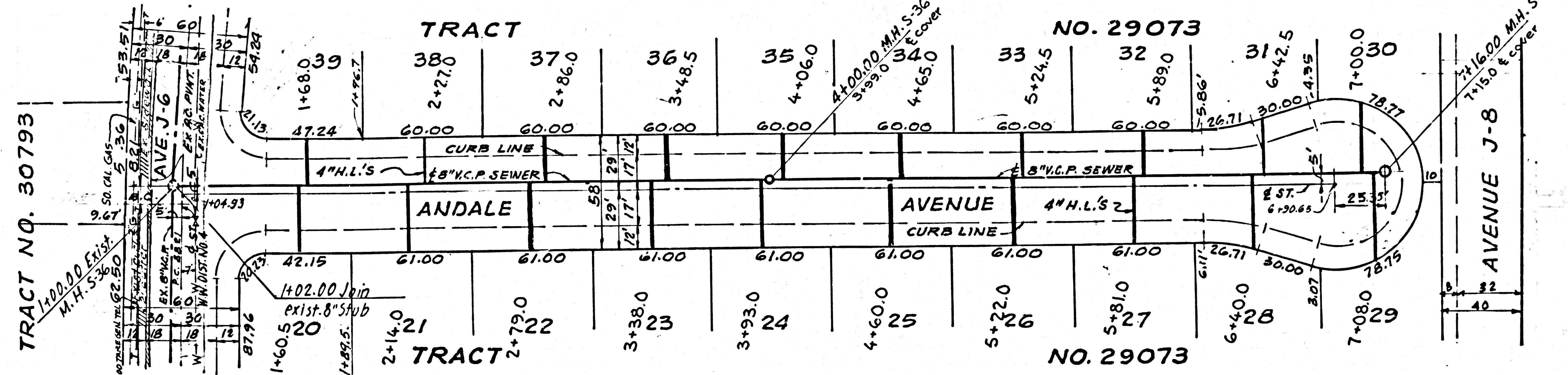
45,830

PORTION OF N.E. 1/4 SECTION 23
 T.7N. R.12W. S.B.M.



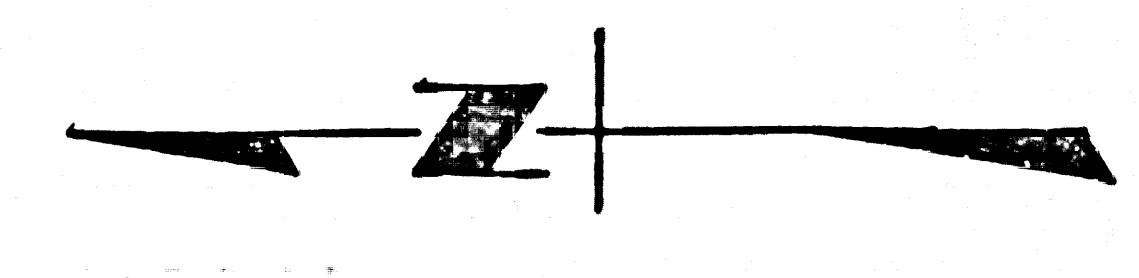
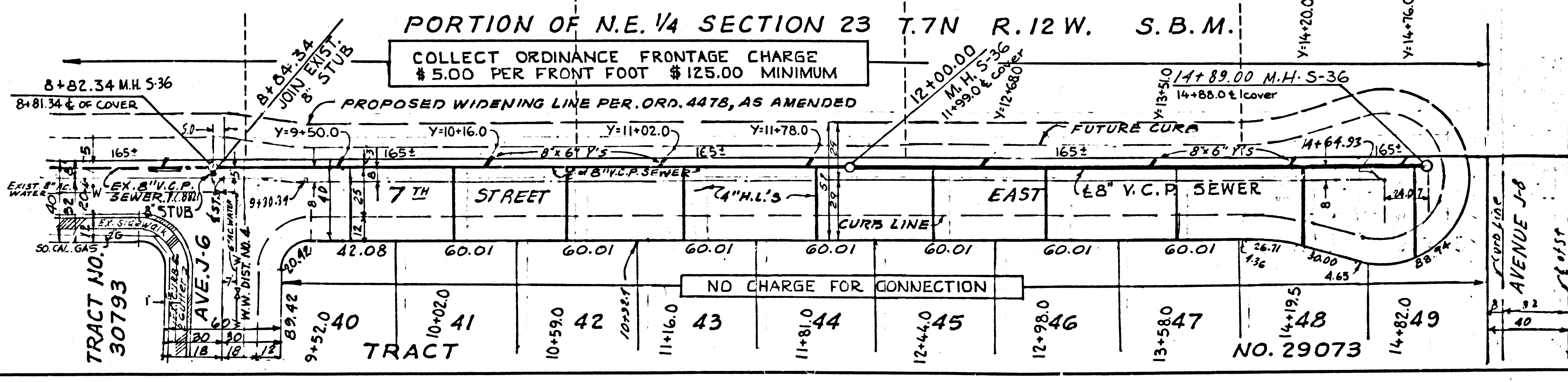
NO CHARGE FOR CONNECTIONS

45,831



COLLECT CHARGES AS INDICATED

45,832



REV. 4.19.77