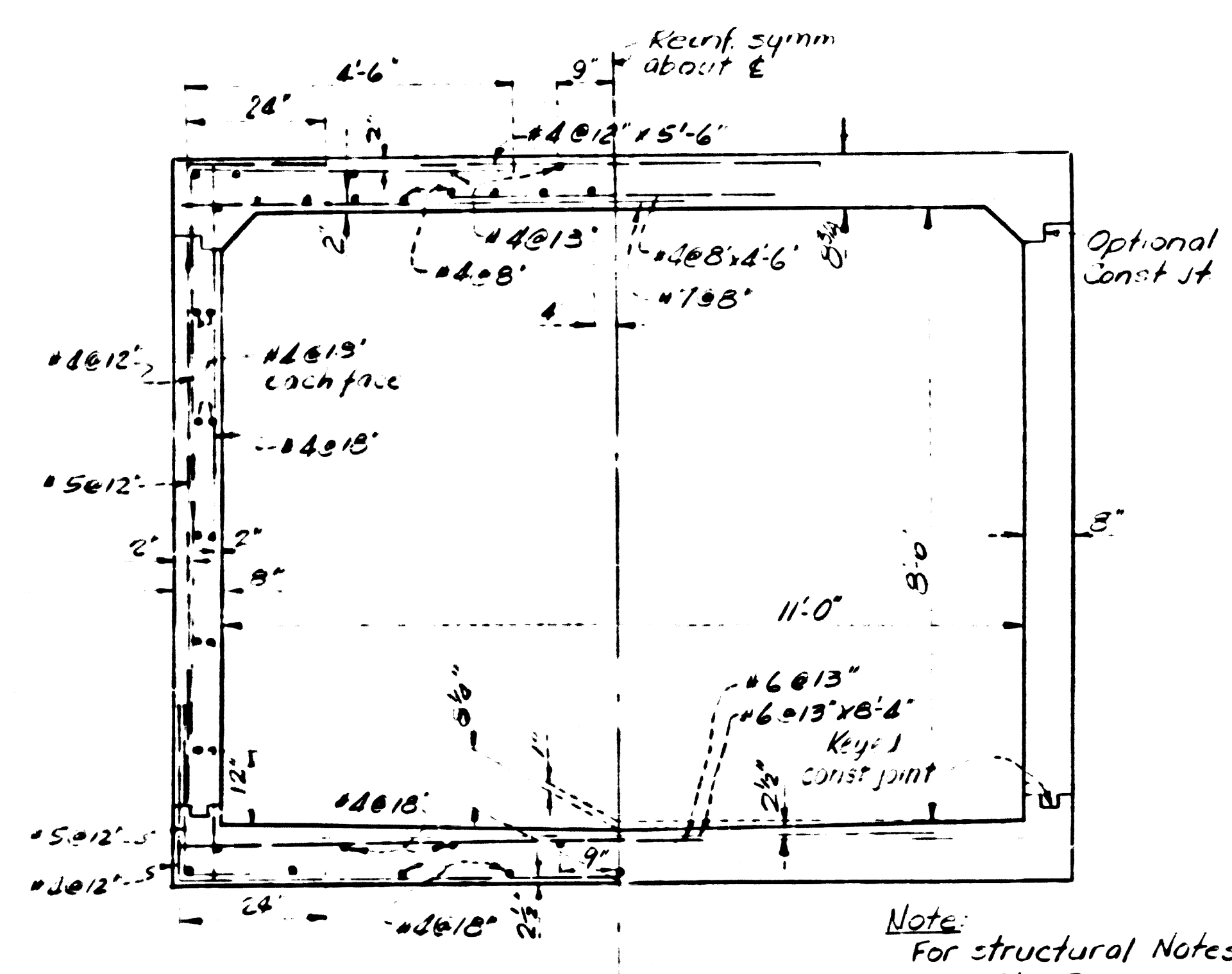
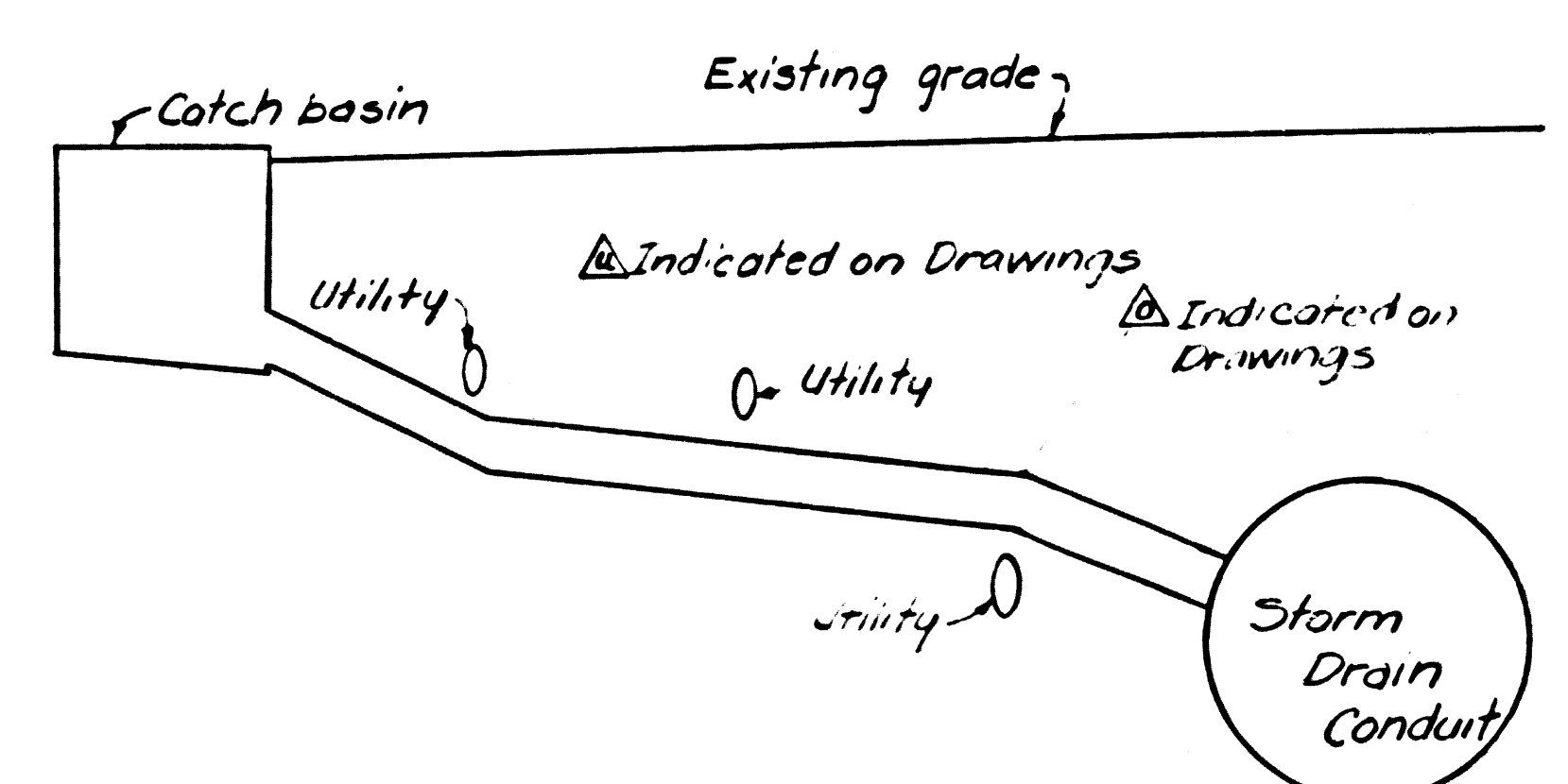


45397

R.C. 9046



Note
For structural Notes,
see Sh. 15



TYPICAL CONNECTOR PIPE PROFILE

THIS 'ON-THE-TOP' SHALL OBTAIN THE FOLLOWING PERMITS PRIOR TO CONSTRUCTION:
 * LOS ANGELES COUNTY ROAD DEPARTMENT (FEE EXEMPT)
 * LOS ANGELES COUNTY SANITATION DIVISION (FEE EXEMPT)
 * LOS ANGELES COUNTY PUBLIC WORKS DEPARTMENT (FEE EXEMPT)

- NOTES:**
1. THE CHANGE IN GRADE OF THE CONNECTOR PIPE MAY OCCUR EITHER OVER OR UNDER AN EXISTING UTILITY. THE PARTICULAR UTILITY AT WHICH THE CHANGE IN GRADE OCCURS, IS NOTED ON THE PROJECT DRAWINGS. AT LOCATIONS WHERE UTILITY CROSSINGS ARE MARKED Δ , THE CONNECTOR PIPE GRADE WILL BREAK OVER THE UTILITY. AT LOCATIONS WHERE UTILITY CROSSINGS ARE MARKED ∇ , THE CONNECTOR PIPE GRADE WILL BREAK UNDER THE UTILITY.
 2. ON THOSE CONNECTOR PIPES WHERE CHANGE IN GRADE IS NOT INDICATED, IT IS ASSUMED THAT THE CONNECTOR PIPE CAN BE LAID ON A STRAIGHT GRADE FROM THE CATCH BASIN TO THE STORM DRAIN WITHOUT INTERFERENCE WITH UTILITIES.
 3. THE CONTRACTOR SHALL MAKE EXPLORATORY EXAMINATIONS TO DETERMINE THE EXACT LOCATION AND DEPTH OF UTILITIES, EXCEPT SANITARY SEWER, WHICH ARE MARKED Δ OR ∇ . AFTER THE EXACT LOCATION OF A UTILITY HAS BEEN DETERMINED, THE GRADE AND ALIGNMENT OF THE CONNECTOR PIPE WILL BE STAKED SO AS TO CLEAR THE UTILITY.
 4. WHERE CONNECTOR PIPE HAS A GRADE CHANGE EXCEEDING 5° OR DIFFERS IN DIAMETER FROM THAT OF EXISTING PIPE, USE CONCRETE COLLAR AS PER STANDARD DRAWING 2-9-332.

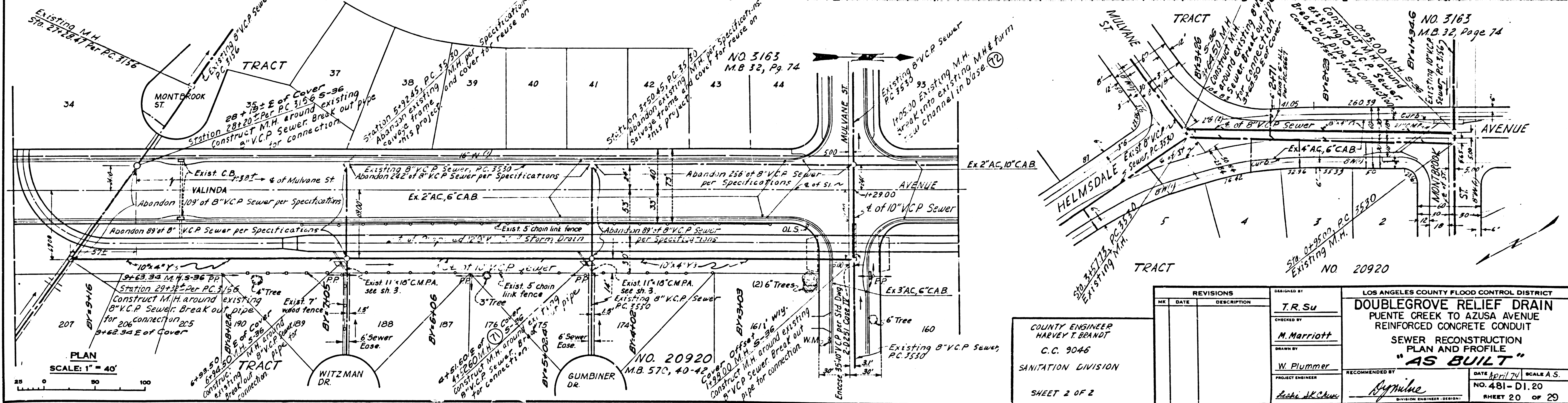
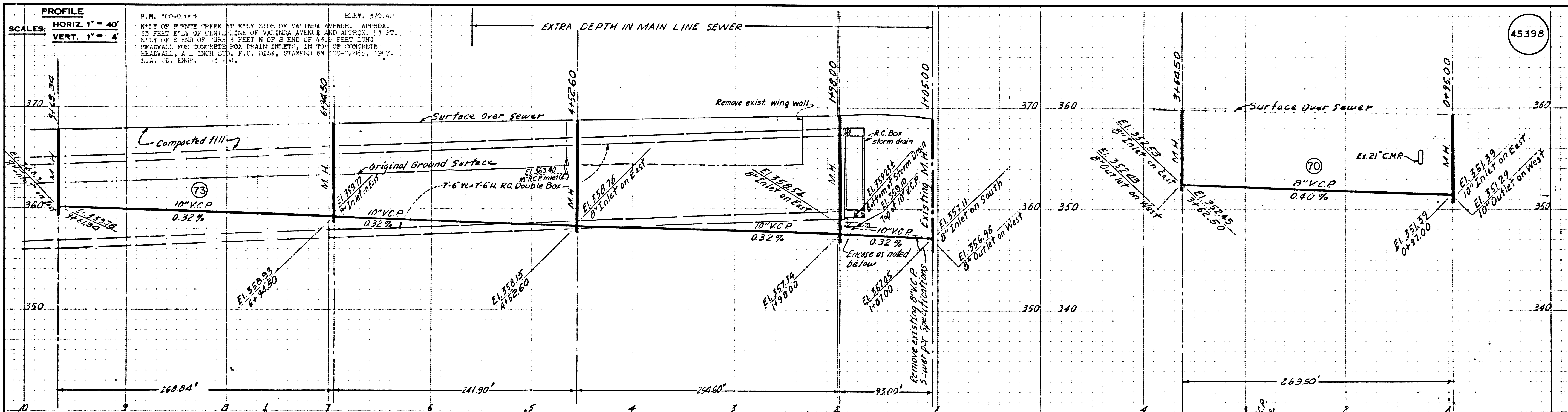
NO CONNECTIONS FOR THE PURPOSE OF MINOR SEWER
 SHALL BE MADE TO THE MAIN LINE OF THE
 SANITARY SEWER SYSTEM.
 ISSUED BY THE COUNTY ENGINEER, LOS ANGELES
 COUNTY, CALIFORNIA, APRIL 7, 1971
 APPROVED BY: *[Signature]*
 ASSISTANT COUNTY ENGINEER

- GENERAL NOTES:**
1. WORK SHALL BE CONDUCTED ACCORDING TO THE STANDARD SPECIFICATIONS FOR HIGHWAY WORK, 1967 EDITION, AND COUNTY SPECIFICATIONS FOR THE CONSTRUCTION OF SANITARY SEWER, DATED MAY 1970, AND SHALL BE BOLETTED ONLY IN THE PRESENCE OF THE COUNTY ENGINEER.
 2. EXISTING SEWER PIPE AND FLOW SHALL BE MAINTAINED AT ALL TIMES.
 3. THE FOLLOWING LATEST REVISED STANDARD PLANS SHALL APPLY IN THE CONSTRUCTION OF THIS PROJECT: S-1, S-2, S-3, S-4, S-5, S-6, S-7, S-8, S-9, S-10, S-11, S-12, S-13, S-14, S-15, S-16, S-17, S-18, S-19, S-20, S-21, S-22, S-23, S-24, S-25, S-26, S-27, S-28, S-29, S-30, S-31, S-32, S-33, S-34, S-35, S-36, S-37, S-38, S-39, S-40, S-41, S-42, S-43, S-44, S-45, S-46, S-47, S-48, S-49, S-50, S-51, S-52, S-53, S-54, S-55, S-56, S-57, S-58, S-59, S-60, S-61, S-62, S-63, S-64, S-65, S-66, S-67, S-68, S-69, S-70, S-71, S-72, S-73, S-74, S-75, S-76, S-77, S-78, S-79, S-80, S-81, S-82, S-83, S-84, S-85, S-86, S-87, S-88, S-89, S-90, S-91, S-92, S-93, S-94, S-95, S-96, S-97, S-98, S-99, S-100, S-101, S-102, S-103, S-104, S-105, S-106, S-107, S-108, S-109, S-110, S-111, S-112, S-113, S-114, S-115, S-116, S-117, S-118, S-119, S-120, S-121, S-122, S-123, S-124, S-125, S-126, S-127, S-128, S-129, S-130, S-131, S-132, S-133, S-134, S-135, S-136, S-137, S-138, S-139, S-140, S-141, S-142, S-143, S-144, S-145, S-146, S-147, S-148, S-149, S-150, S-151, S-152, S-153, S-154, S-155, S-156, S-157, S-158, S-159, S-160, S-161, S-162, S-163, S-164, S-165, S-166, S-167, S-168, S-169, S-170, S-171, S-172, S-173, S-174, S-175, S-176, S-177, S-178, S-179, S-180, S-181, S-182, S-183, S-184, S-185, S-186, S-187, S-188, S-189, S-190, S-191, S-192, S-193, S-194, S-195, S-196, S-197, S-198, S-199, S-200, S-201, S-202, S-203, S-204, S-205, S-206, S-207, S-208, S-209, S-210, S-211, S-212, S-213, S-214, S-215, S-216, S-217, S-218, S-219, S-220, S-221, S-222, S-223, S-224, S-225, S-226, S-227, S-228, S-229, S-230, S-231, S-232, S-233, S-234, S-235, S-236, S-237, S-238, S-239, S-240, S-241, S-242, S-243, S-244, S-245, S-246, S-247, S-248, S-249, S-250, S-251, S-252, S-253, S-254, S-255, S-256, S-257, S-258, S-259, S-260, S-261, S-262, S-263, S-264, S-265, S-266, S-267, S-268, S-269, S-270, S-271, S-272, S-273, S-274, S-275, S-276, S-277, S-278, S-279, S-280, S-281, S-282, S-283, S-284, S-285, S-286, S-287, S-288, S-289, S-290, S-291, S-292, S-293, S-294, S-295, S-296, S-297, S-298, S-299, S-300, S-301, S-302, S-303, S-304, S-305, S-306, S-307, S-308, S-309, S-310, S-311, S-312, S-313, S-314, S-315, S-316, S-317, S-318, S-319, S-320, S-321, S-322, S-323, S-324, S-325, S-326, S-327, S-328, S-329, S-330, S-331, S-332, S-333, S-334, S-335, S-336, S-337, S-338, S-339, S-340, S-341, S-342, S-343, S-344, S-345, S-346, S-347, S-348, S-349, S-350, S-351, S-352, S-353, S-354, S-355, S-356, S-357, S-358, S-359, S-360, S-361, S-362, S-363, S-364, S-365, S-366, S-367, S-368, S-369, S-370, S-371, S-372, S-373, S-374, S-375, S-376, S-377, S-378, S-379, S-380, S-381, S-382, S-383, S-384, S-385, S-386, S-387, S-388, S-389, S-390, S-391, S-392, S-393, S-394, S-395, S-396, S-397, S-398, S-399, S-400, S-401, S-402, S-403, S-404, S-405, S-406, S-407, S-408, S-409, S-410, S-411, S-412, S-413, S-414, S-415, S-416, S-417, S-418, S-419, S-420, S-421, S-422, S-423, S-424, S-425, S-426, S-427, S-428, S-429, S-430, S-431, S-432, S-433, S-434, S-435, S-436, S-437, S-438, S-439, S-440, S-441, S-442, S-443, S-444, S-445, S-446, S-447, S-448, S-449, S-450, S-451, S-452, S-453, S-454, S-455, S-456, S-457, S-458, S-459, S-460, S-461, S-462, S-463, S-464, S-465, S-466, S-467, S-468, S-469, S-470, S-471, S-472, S-473, S-474, S-475, S-476, S-477, S-478, S-479, S-480, S-481, S-482, S-483, S-484, S-485, S-486, S-487, S-488, S-489, S-490, S-491, S-492, S-493, S-494, S-495, S-496, S-497, S-498, S-499, S-500, S-501, S-502, S-503, S-504, S-505, S-506, S-507, S-508, S-509, S-510, S-511, S-512, S-513, S-514, S-515, S-516, S-517, S-518, S-519, S-520, S-521, S-522, S-523, S-524, S-525, S-526, S-527, S-528, S-529, S-530, S-531, S-532, S-533, S-534, S-535, S-536, S-537, S-538, S-539, S-540, S-541, S-542, S-543, S-544, S-545, S-546, S-547, S-548, S-549, S-550, S-551, S-552, S-553, S-554, S-555, S-556, S-557, S-558, S-559, S-560, S-561, S-562, S-563, S-564, S-565, S-566, S-567, S-568, S-569, S-570, S-571, S-572, S-573, S-574, S-575, S-576, S-577, S-578, S-579, S-580, S-581, S-582, S-583, S-584, S-585, S-586, S-587, S-588, S-589, S-590, S-591, S-592, S-593, S-594, S-595, S-596, S-597, S-598, S-599, S-600, S-601, S-602, S-603, S-604, S-605, S-606, S-607, S-608, S-609, S-610, S-611, S-612, S-613, S-614, S-615, S-616, S-617, S-618, S-619, S-620, S-621, S-622, S-623, S-624, S-625, S-626, S-627, S-628, S-629, S-630, S-631, S-632, S-633, S-634, S-635, S-636, S-637, S-638, S-639, S-640, S-641, S-642, S-643, S-644, S-645, S-646, S-647, S-648, S-649, S-650, S-651, S-652, S-653, S-654, S-655, S-656, S-657, S-658, S-659, S-660, S-661, S-662, S-663, S-664, S-665, S-666, S-667, S-668, S-669, S-670, S-671, S-672, S-673, S-674, S-675, S-676, S-677, S-678, S-679, S-680, S-681, S-682, S-683, S-684, S-685, S-686, S-687, S-688, S-689, S-690, S-691, S-692, S-693, S-694, S-695, S-696, S-697, S-698, S-699, S-700, S-701, S-702, S-703, S-704, S-705, S-706, S-707, S-708, S-709, S-710, S-711, S-712, S-713, S-714, S-715, S-716, S-717, S-718, S-719, S-720, S-721, S-722, S-723, S-724, S-725, S-726, S-727, S-728, S-729, S-730, S-731, S-732, S-733, S-734, S-735, S-736, S-737, S-738, S-739, S-740, S-741, S-742, S-743, S-744, S-745, S-746, S-747, S-748, S-749, S-750, S-751, S-752, S-753, S-754, S-755, S-756, S-757, S-758, S-759, S-760, S-761, S-762, S-763, S-764, S-765, S-766, S-767, S-768, S-769, S-770, S-771, S-772, S-773, S-774, S-775, S-776, S-777, S-778, S-779, S-780, S-781, S-782, S-783, S-784, S-785, S-786, S-787, S-788, S-789, S-790, S-791, S-792, S-793, S-794, S-795, S-796, S-797, S-798, S-799, S-800, S-801, S-802, S-803, S-804, S-805, S-806, S-807, S-808, S-809, S-810, S-811, S-812, S-813, S-814, S-815, S-816, S-817, S-818, S-819, S-820, S-821, S-822, S-823, S-824, S-825, S-826, S-827, S-828, S-829, S-830, S-831, S-832, S-833, S-834, S-835, S-836, S-837, S-838, S-839, S-840, S-841, S-842, S-843, S-844, S-845, S-846, S-847, S-848, S-849, S-850, S-851, S-852, S-853, S-854, S-855, S-856, S-857, S-858, S-859, S-860, S-861, S-862, S-863, S-864, S-865, S-866, S-867, S-868, S-869, S-870, S-871, S-872, S-873, S-874, S-875, S-876, S-877, S-878, S-879, S-880, S-881, S-882, S-883, S-884, S-885, S-886, S-887, S-888, S-889, S-890, S-891, S-892, S-893, S-894, S-895, S-896, S-897, S-898, S-899, S-900, S-901, S-902, S-903, S-904, S-905, S-906, S-907, S-908, S-909, S-910, S-911, S-912, S-913, S-914, S-915, S-916, S-917, S-918, S-919, S-920, S-921, S-922, S-923, S-924, S-925, S-926, S-927, S-928, S-929, S-930, S-931, S-932, S-933, S-934, S-935, S-936, S-937, S-938, S-939, S-940, S-941, S-942, S-943, S-944, S-945, S-946, S-947, S-948, S-949, S-950, S-951, S-952, S-953, S-954, S-955, S-956, S-957, S-958, S-959, S-960, S-961, S-962, S-963, S-964, S-965, S-966, S-967, S-968, S-969, S-970, S-971, S-972, S-973, S-974, S-975, S-976, S-977, S-978, S-979, S-980, S-981, S-982, S-983, S-984, S-985, S-986, S-987, S-988, S-989, S-990, S-991, S-992, S-993, S-994, S-995, S-996, S-997, S-998, S-999, S-1000.

NOTE TO CONTRACTOR:
 THE EXISTENCE AND LOCATION OF ANY UNDERGROUND UTILITY LINES OR STRUCTURES SHOWN ON THESE SEWER PLANS ARE OBTAINED BY A SEARCH OF THE AVAILABLE RECORDS. TO THE BEST OF OUR KNOWLEDGE THERE ARE NO EXISTING UTILITIES EXCEPT AS NOTED ON THESE PLANS.
 THE CONTRACTOR IS REQUIRED TO TAKE THE NECESSARY MEASURES TO PROTECT THE UTILITY LINES SHOWN AND ANY OTHER LINES NOT SHOWN OR NOT SHOWN ON THESE PLANS.

JOHN D. PARKHURST CHIEF ENGINEER OF SANITATION DIST. NO. 5 APPROVED BY: <i>[Signature]</i> ASSIST. OFFICE ENGINEER	COUNTY ENGINEER HARVEY T. BRANDT CASH CONTRACT 9046 SANITATION DIVISION APPROVED: <i>[Signature]</i> HEAD, DESIGN BRANCH SHEET 1 OF 2	DESIGNED BY J. Hoehn/T.R. Su	REVISIONS MK. DATE DESCRIPTION		LOS ANGELES COUNTY FLOOD CONTROL DISTRICT DOUBLEGROVE RELIEF DRAIN PUENTE CREEK TO AZUSA AVENUE REINFORCED CONCRETE CONDUIT "AS BUILT" MISC. DETAILS AND NOTES	
		CHECKED BY D. Henry				RECOMMENDED BY <i>[Signature]</i> DIVISION ENGINEER (DESIGN)

R.C. 9046



R.M. 1000000
 ELEV. 570.00
 NPLY OF PUENTE CREEK AT EPLY SIDE OF VALINDA AVENUE, APPROX.
 55 FEET EPLY OF CENTERLINE OF VALINDA AVENUE AND APPROX. 1 FT.
 NPLY OF S END OF "URM" 4 FEET N OF S END OF 44.1 FEET LONG
 HEADWALL FOR CONCRETE BOX DRAIN INLETS, IN TOP OF CONCRETE
 HEADWALL, 4 INCH STD. F.C. DISK, STAMPED EM 190-1000, 12 1/2"
 T.A. 100, EMP. 1900

COUNTY ENGINEER
 HARVEY T. BRANDT
 C.C. 9046
 SANITATION DIVISION
 SHEET 2 OF 2

REVISIONS		
MK	DATE	DESCRIPTION

DESIGNED BY
T.R. Su
 CHECKED BY
M. Marriott
 DRAWN BY
W. Plummer
 PROJECT ENGINEER
Ashe J.K. Chue

LOS ANGELES COUNTY FLOOD CONTROL DISTRICT
DOUBLEGROVE RELIEF DRAIN
 PUENTE CREEK TO AZUSA AVENUE
 REINFORCED CONCRETE CONDUIT
 SEWER RECONSTRUCTION
 PLAN AND PROFILE
"AS BUILT"

RECOMMENDED BY
Ashe J.K. Chue
 DIVISION ENGINEER (DESIGN)

DATE April 74
 NO. 481-D1.20
 SHEET 20 OF 20