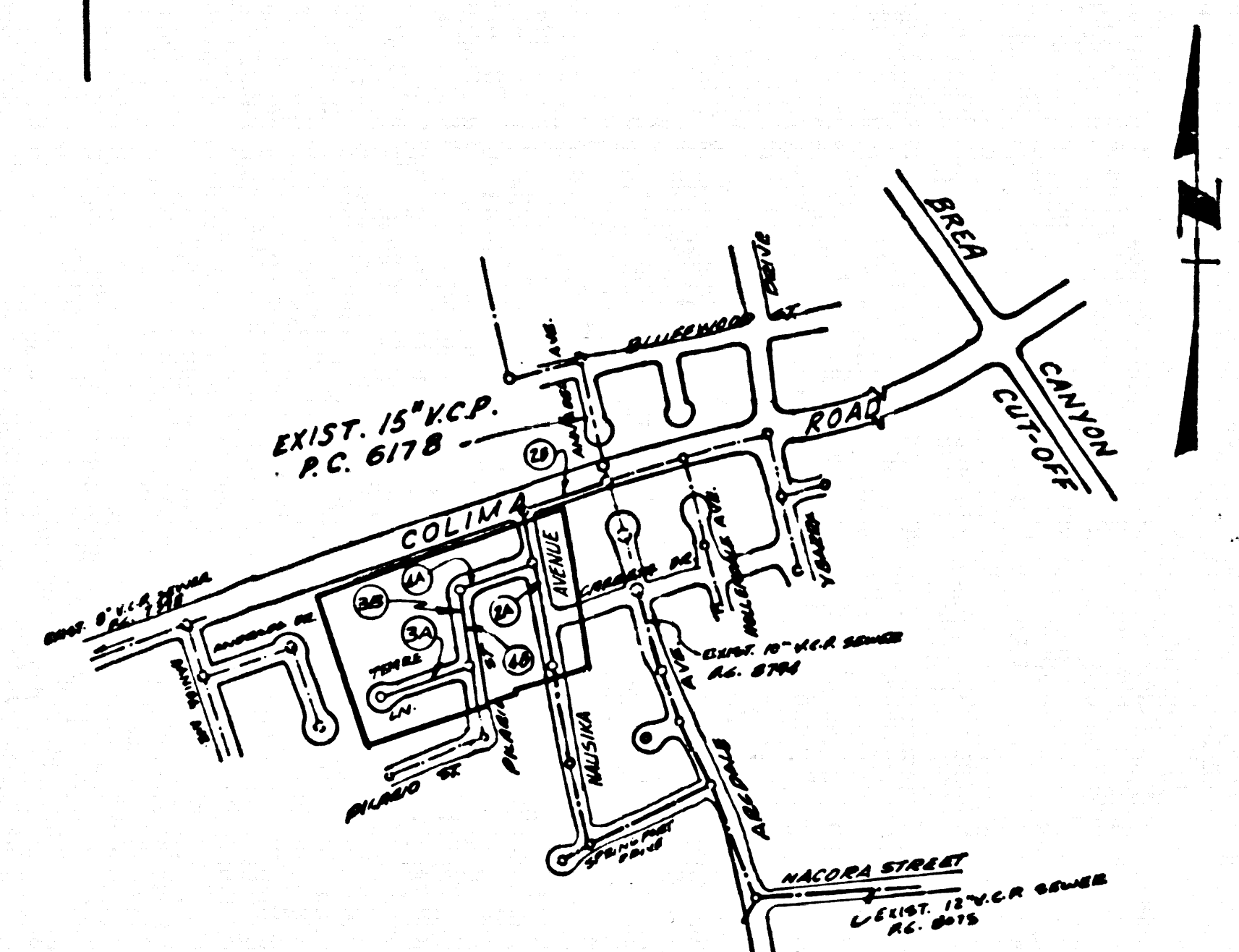


DOUBLE SCALE

B.M. B.G. 3104 ELEV. 528.633 TAG IN WEST CURB 3' NORTH OF B.C.R. AT NORTHWEST CORNER OF COLIMA ROAD (S.W. 1/4) VERMONT DRIVE 80' NORTH AND 10' WEST OF INTERSECTION OTTERBEIN QUAD. 19.70.



INDEX MAP SCALE: 1"=600' P.C. 9058

- GENERAL NOTES: 1. REVISIONS ARE IN PENCIL ABOVE U.S.C. & G.S. SEA LEVEL DATUM OF 1929. 2. NO REVISIONS SHALL BE MADE IN THESE PLANS WITHOUT THE APPROVAL OF THE COUNTY ENGINEER. 3. NO REPRESENTATIVE OF THE COUNTY ENGINEER WILL SURVEY OR LAY OUT ANY PORTION OF THE WORK. 4. GRADES TO WHICH THE IMPROVEMENT IS TO BE CONSTRUCTED ARE SHOWN ON PLANS AND PROFILES. GRADE POINTS FOR TOP OF CURB, CENTER LINE OF STREETS, OR CENTER LINE OF ALLEYS ARE SHOWN BY CIRCLES ON PROFILES. AT ALL POINTS BETWEEN SENSIBLE WATER POINTS THE GRADE SHALL BE ESTABLISHED SO AS TO CONFORM TO A STRAIGHT LINE DRAWN BETWEEN SAID DESIGNATED POINTS. 5. THE PRIVATE ENGINEER SHALL FURNISH THE COUNTY ENGINEER WITH GRADE SHEETS AND STATIONING FOR ALL HOUSE LATERALS AND "Y" OR "T" BRANCHES AND SHALL PROVIDE STAKES FOR THEM AT THEIR PROPER LOCATIONS WITH STATIONING PLAINLY MARKED. ALL HOUSE LATERALS SHALL BE CONSTRUCTED IN A STRAIGHT ALIGNMENT AT RIGHT ANGLES FROM THE MAIN LINE SEWER EXCEPT AS SHOWN ON THE PLANS. HOUSE LATERALS FROM COURTSES SHALL NOT HAVE AN ANGLE OF LESS THAN 45° WITH THE MAIN LINE SEWER. ANY CHANGE IN ALIGNMENT SHALL BE REQUESTED IN WRITING BY THE PRIVATE ENGINEER. 6. THE PRIVATE ENGINEER SHALL FURNISH THE HOUSE LATERAL DEPTH AT THE PROPERTY LINE BELOW THE TOP OF CURB ELEVATION FOR EACH HOUSE LATERAL ON THE GRADE SHEET. 7. REVISIONS CAN BE MADE. THE CONTRACTOR MUST OBTAIN A PERMIT TO EXCAVATE IN COUNTY STREETS FROM THE L.A. COUNTY ROAD DEPT., DISTRICT OFFICE NO. 1, AND PAY A FEE TO THE COUNTY ENGINEER, 201 E. ROYALTY AVE., SAN BERNARDINO REGIONAL OFFICE, TO COVER THE COST OF CONSTRUCTION INSPECTION AND RECORD PLANS. 8. IF WORK IS TO BE DONE IN A STATE HIGHWAY, A PERMIT MUST BE OBTAINED FROM THE STATE OF CALIFORNIA, DIVISION OF HIGHWAYS, 120 SOUTH SPRING STREET, LOS ANGELES, CALIFORNIA. 9. APPROVAL OF THIS PLAN BY THE COUNTY OF LOS ANGELES DOES NOT CONSTITUTE A REPRESENTATION AS TO THE ACCURACY OF THE LOCATION OF OR THE EXISTENCE OR NON-EXISTENCE OF ANY UNDERGROUND UTILITY PIPE, OR STRUCTURE WITHIN THE LIMITS OF THIS PROJECT. THE NOTE APPLIES TO ALL PAGES. 10. REFER TO SECTION 718.41 OF THE STANDARD SPECIFICATIONS, REGARDING SAFETY ORDERS. 11. "PERMITS TO INSURANCE OF THE REPAIRED SEWER CONSTRUCTION PERMIT BY THE COUNTY ENGINEER. THE CONTRACTOR SHALL OBTAIN A PERMIT TO EXCAVATE FROM THE OWNER OF ANY PRIVATE PROPERTY." COUNTY SANITATION DISTRICTS SHALL BE NOTICED 24 HOURS PRIOR TO THE FOLLOWING: NO THAT REQUIRED INSPECTION CAN BE MADE. (PHONE: 862-8608) ACCEPTANCE OF THE PROJECT. NO CONNECTION FOR THE DISPOSAL OF INDUSTRIAL WASTE SHALL BE MADE TO SEWERS SHOWN ON THESE DRAWINGS UNTIL A PERMIT FOR INDUSTRIAL WASTE WATER DISCHARGE HAS BEEN ISSUED BY THE SANITATION DISTRICTS FOR SAID CONNECTION.

TRACT NO. 31671 PRIVATE CONTRACT NO. 9058

W.S. 38-E4 2 SHEETS, 4 PAGES SCALE: VERT. 1"=8' HORIZ. 1"=40' ALG., 1975 PREPARED IN THE OFFICES OF RONALD W. MARTIN & ASSOCIATES, INC. 1895 NEWPORT BLVD., COSTA MESA, CALIFORNIA 92627 BY: [Signature] REG. C. E. No. 20499

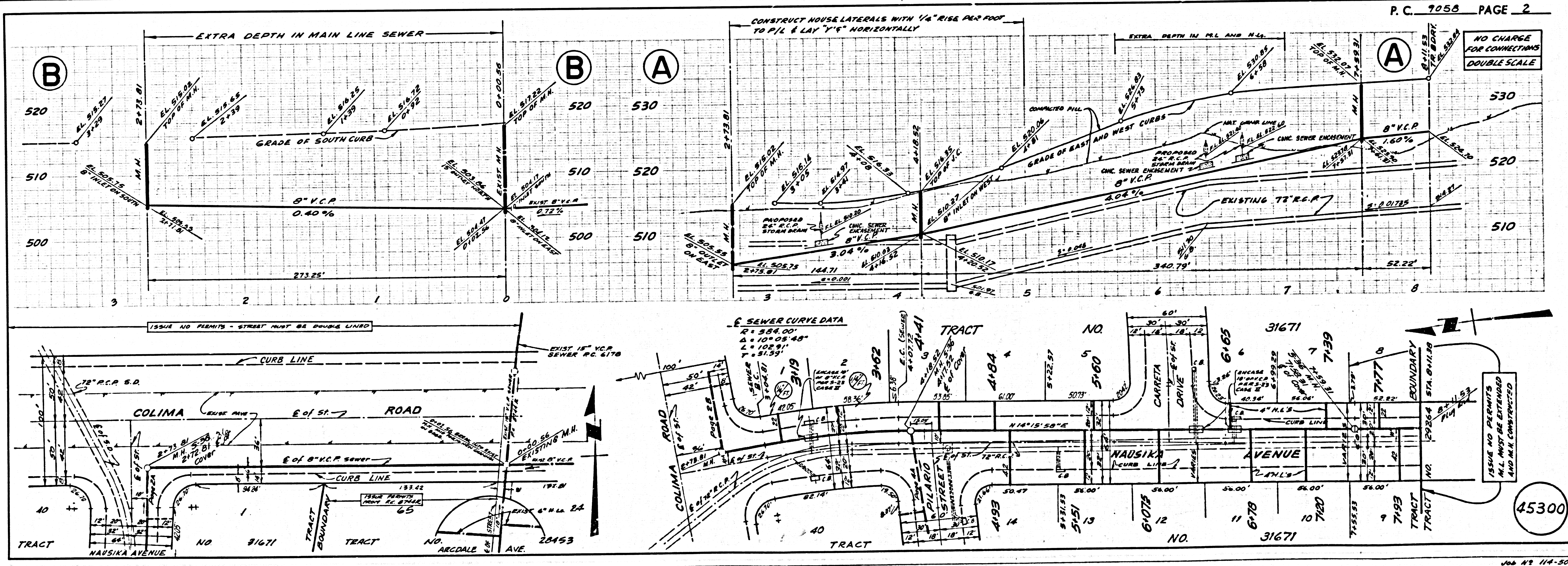
- CONSTRUCTION NOTES: 1. WORK SHALL BE CONSTRUCTED ACCORDING TO THE STANDARD SPECIFICATIONS FOR PUBLIC WORKS CONSTRUCTION (1978 EDITION) WITH THE SUPPLEMENTS AND COUNTY ENGINEER SPECIAL PROVISIONS FOR THE CONSTRUCTION OF SANITARY SEWERS DATED CHANGE 4, 1978, AND SHALL BE PROSECUTED ONLY IN THE PRESENCE OF THE COUNTY ENGINEER. 2. THE CONTRACTOR SHALL NOTIFY THE DEPARTMENT DIVISION BY TELEPHONE, (213) 974-7289, AT LEAST TWENTY-FOUR HOURS BEFORE STARTING ANY WORK UNDER THIS CONTRACT. 3. HOUSE LATERALS TO BE CONSTRUCTED WITH INVERTS AT PROPERTY LINE 4 FEET BELOW CURB GRADE EXCEPT AS NOTED. 4. "Y" OR "T" BRANCHES MAY BE USED FOR CONNECTIONS TO MAINLINE SEWERS EXCEPT AS NOTED. 5. ALL STRUCTURES SHALL BE EITHER BRICK MANHOLES PER 8-3 OR PRECAST CONCRETE MANHOLES PER 8-36, EXCEPT AS NOTED. 6. PROVIDE STAKES ON THE PROPERTY LINE OR PROPERTY LINES PRODUCED AT RIGHT ANGLES TO THE SEWER LINE AT THE CENTER LINE OF EACH MANHOLE. 7. MANHOLE TOPS IN UNIMPROVED RIGHTS OF WAY TO BE 22 INCHES ABOVE FINISHED GRADE. 8. VITRIFIED CLAY PIPE JOINTS SHALL BE THE "Y", "T", OR "C" PER STANDARD SPECIFICATIONS SECTION 306-2. 9. IF A POWER POLE IS WITHIN THREE FEET OF THE SEWER, THE SEWER SHALL BE ENCASED, PER 8-33, CASE II, TWO FEET ON EACH SIDE FROM THE POINT OF INTERFERENCE. 10. IF DURING THE COURSE OF CONSTRUCTION IT IS DETERMINED THAT THERE IS LESS THAN FOUR FEET OF COVER OVER THE TOP OF A MAIN LINE OR HOUSE LATERAL "Y" OR "T" SEWER WHICH IS NOT INDICATED ON THE PLANS, THE PIPE SHALL BE ENCASED PER 8-33, CASE II UNLESS OTHERWISE APPROVED BY THE COUNTY ENGINEER. 11. ALL JOINTS BETWEEN CAST IRON PIPE AND VITRIFIED CLAY PIPE SHALL BE MADE WITH A RUBBER SLEEVE JOINT, TYPE "C" OR "B", WITH BUSHING IF NECESSARY PER STANDARD SPECIFICATIONS, SECTION 306-2. 12. SEWERS TO BE TESTED FOR LEAKAGE PER SECTION 306-7.4 OF THE STANDARD SPECIFICATIONS AND SPECIAL PROVISIONS. 13. RESURFACE ALL TRENCHES WITHIN PAVED AREAS TO MEET L.A. COUNTY ROAD DEPT. OR CALIFORNIA STATE HIGHWAY REQUIREMENTS IN ACCORDANCE WITH PERMITS. 14. FULL COMPLIANCE WITH SECTION 306-1.8.2 OF THE SPECIAL PROVISIONS WILL BE REQUIRED FOR BACKFILL IN STREETS. CERTIFICATION OF BACKFILL COMPACTION AND SAND EQUIVALENTS BY A QUALIFIED, REGISTERED TESTING LABORATORY SHALL BE PROVIDED BY THE PERMITTEE PRIOR TO THE ISSUANCE OF A CERTIFICATE OF PARTIAL ACCEPTANCE. 15. TRENCHES IN CURBS AT RIPS OF LATERALS IN INDICATED HOUSE LATERALS SHALL BE CONSTRUCTED WITH 1/4" RISE PER FOOT TO PROPERTY LINE.

LEGEND

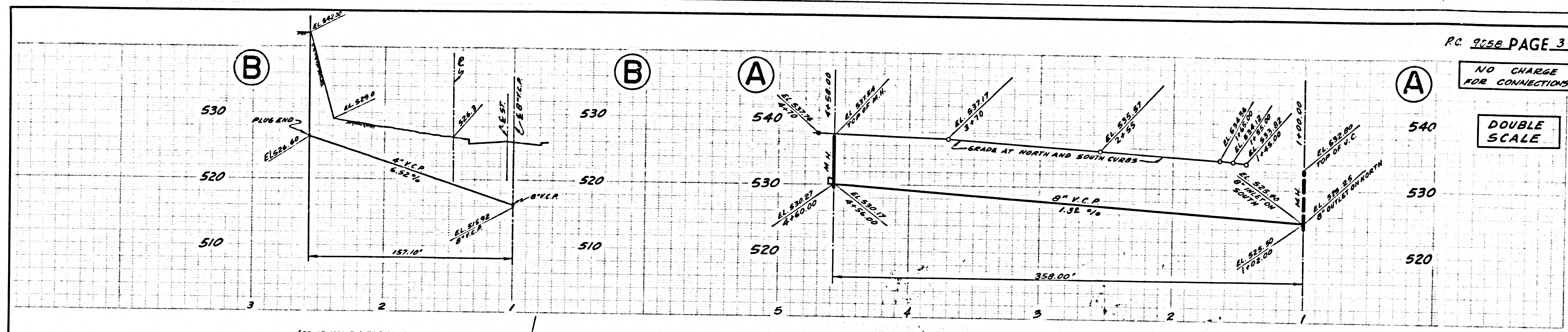
MINIMUM PUBLIC SAFETY REQUIREMENTS	8-1
BRICK MANHOLES	8-3
STANDARD MANHOLE STEP	8-17
BEDDING FOR SEWER PIPE	8-21
CRADLING AND ENCASEMENT	8-23
PIPE ON THE SUPPORT	8-26
ALLOWABLE TRENCH WIDTHS	8-28
LOCKING MANHOLE FRAME AND COVER	8-33
NON-REINFORCED PRECAST CONCRETE MANHOLE	8-36

45299

COUNTY OF LOS ANGELES, CALIFORNIA HARVEY T. BRANDT, COUNTY ENGINEER JOHN D. PARKHURST, CHIEF ENGINEER APPROVED [Signature] APPROVED [Signature] CHECKED [Signature] 8 Aug 75 REG. C. E. No. 19156 L.A. PUENTE BLDG. DIST. 20 I.N. 0250.02

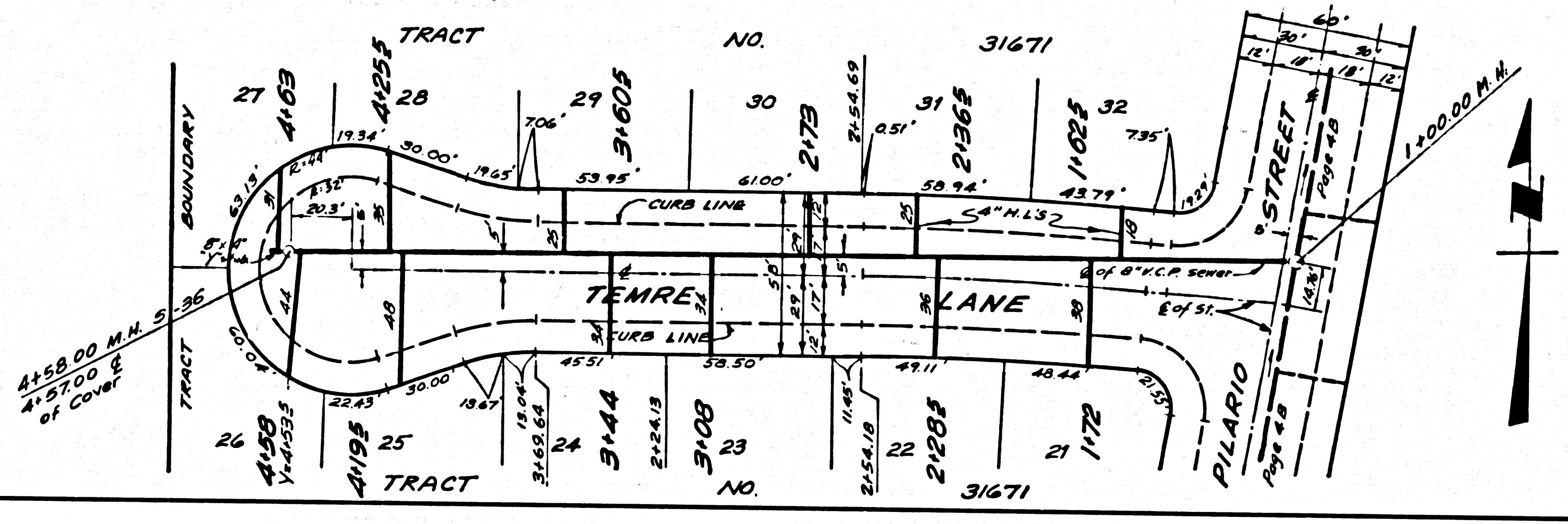
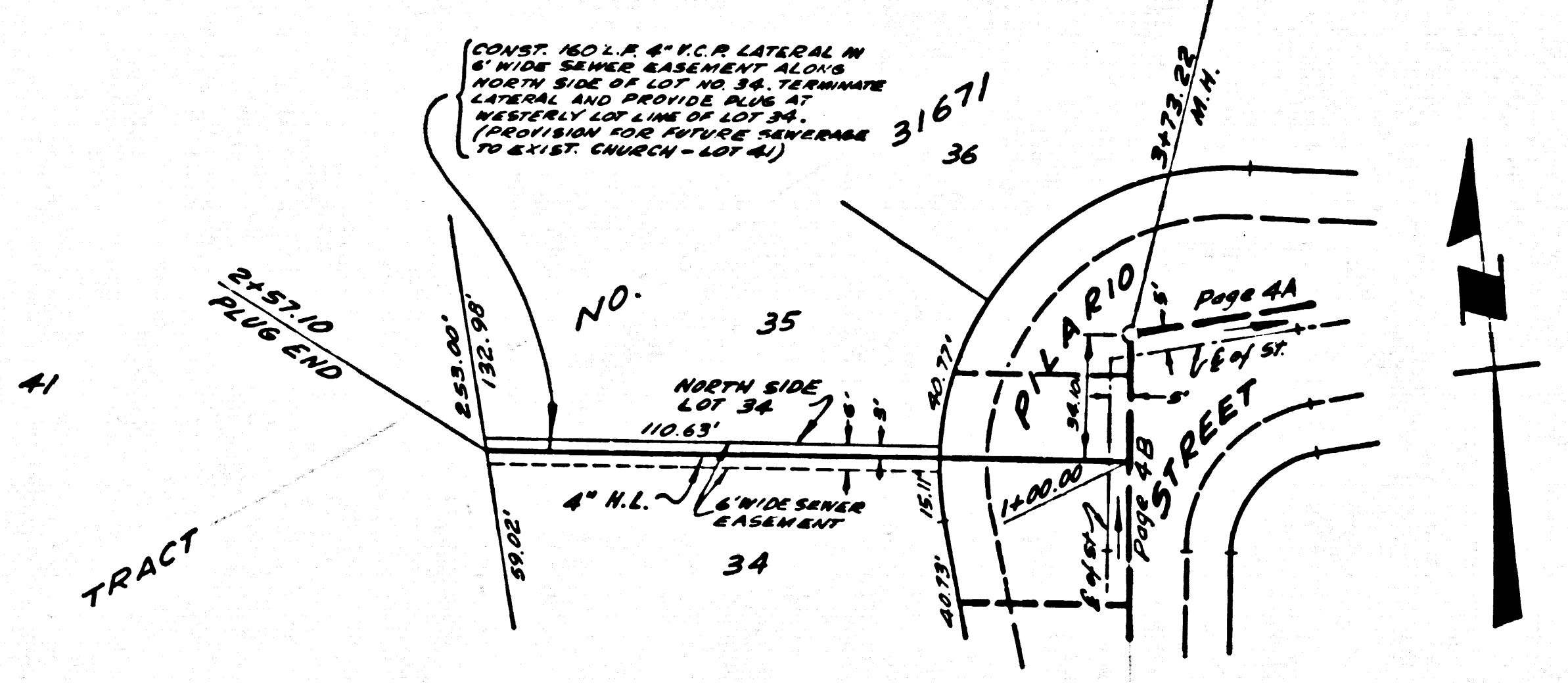


45300

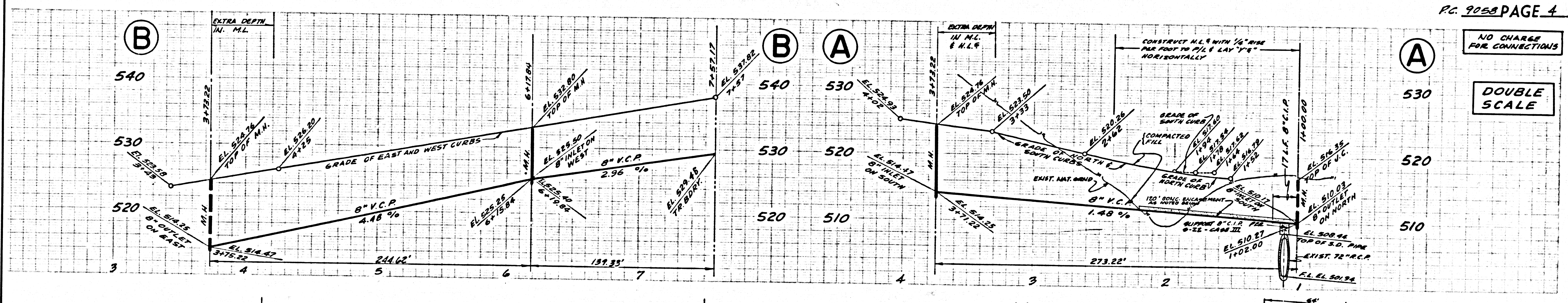


NO CHARGE FOR CONNECTIONS

DOUBLE SCALE

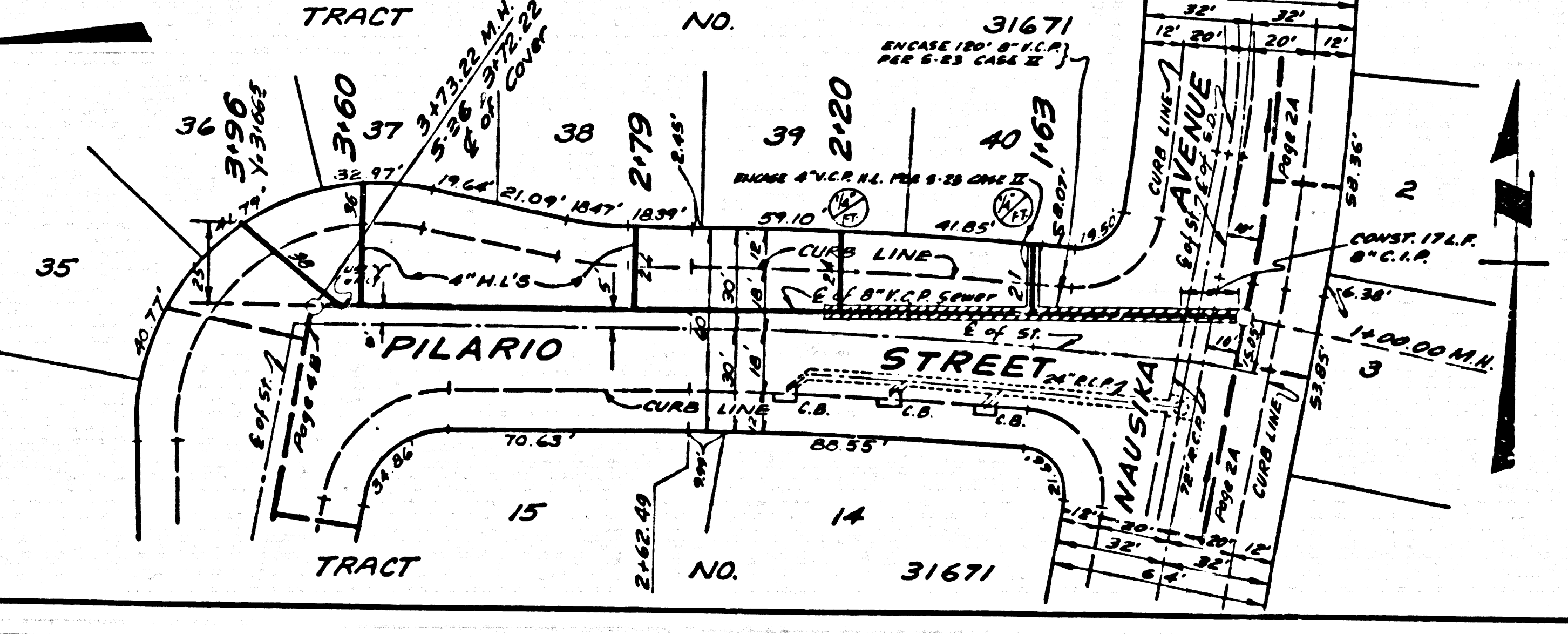
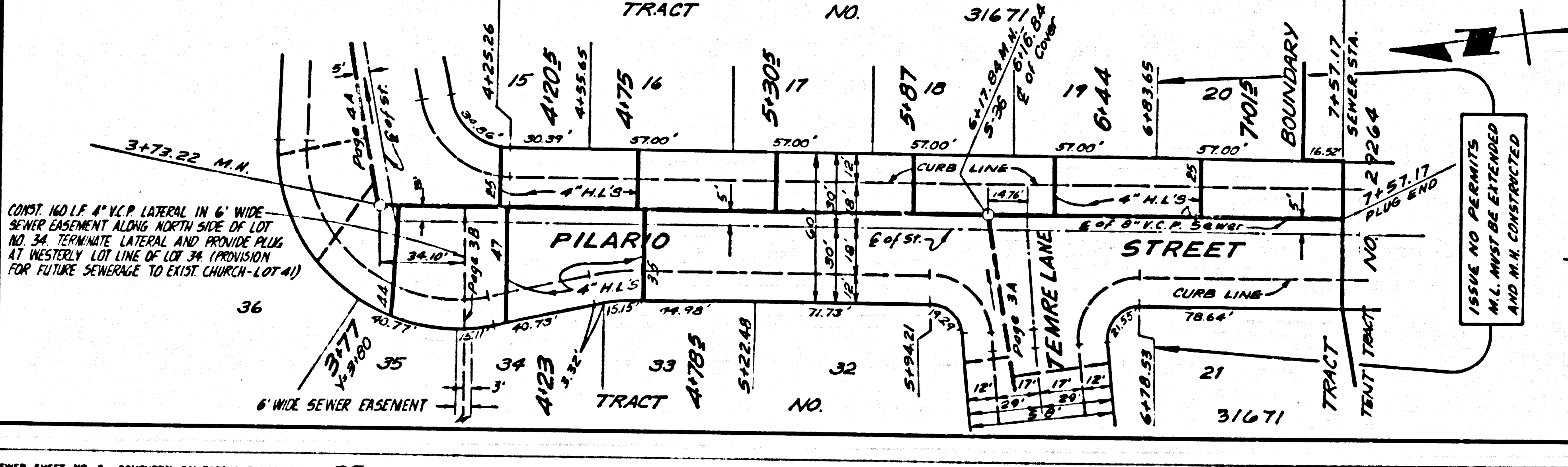


45301



NO CHARGE FOR CONNECTIONS

DOUBLE SCALE



45302