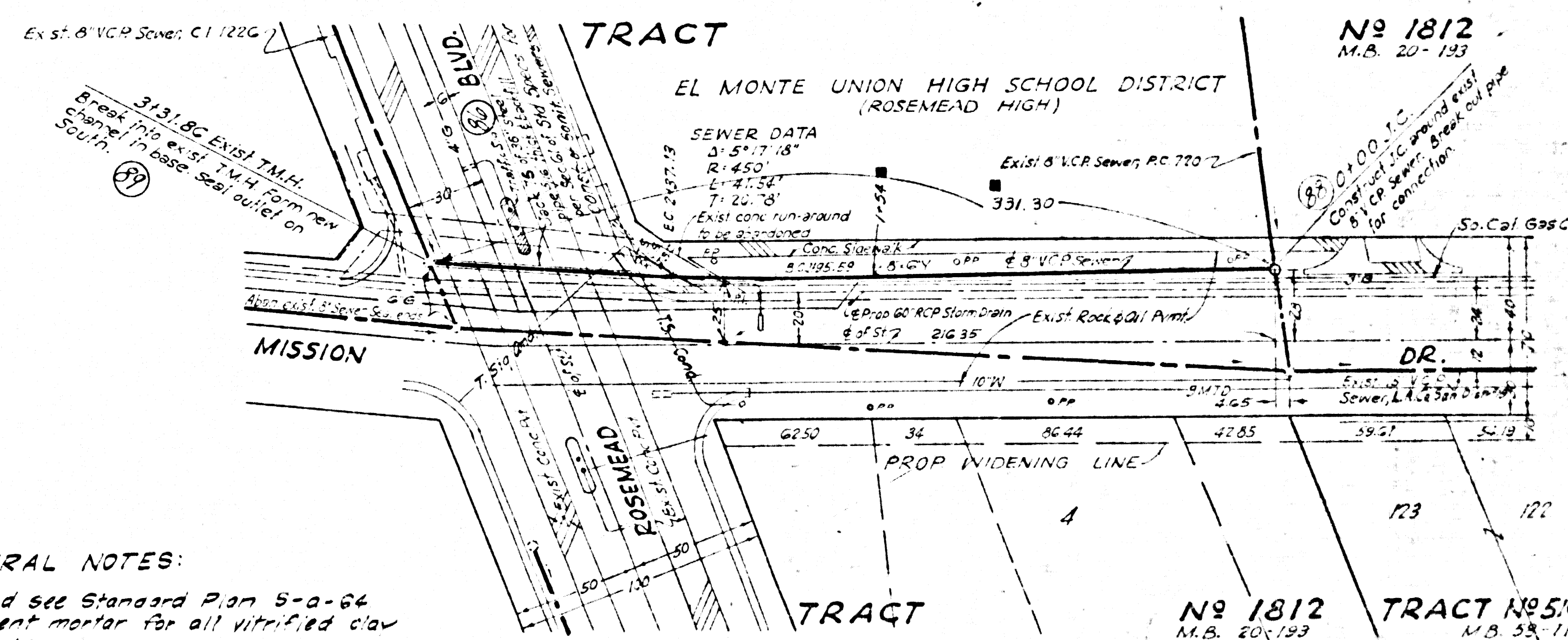
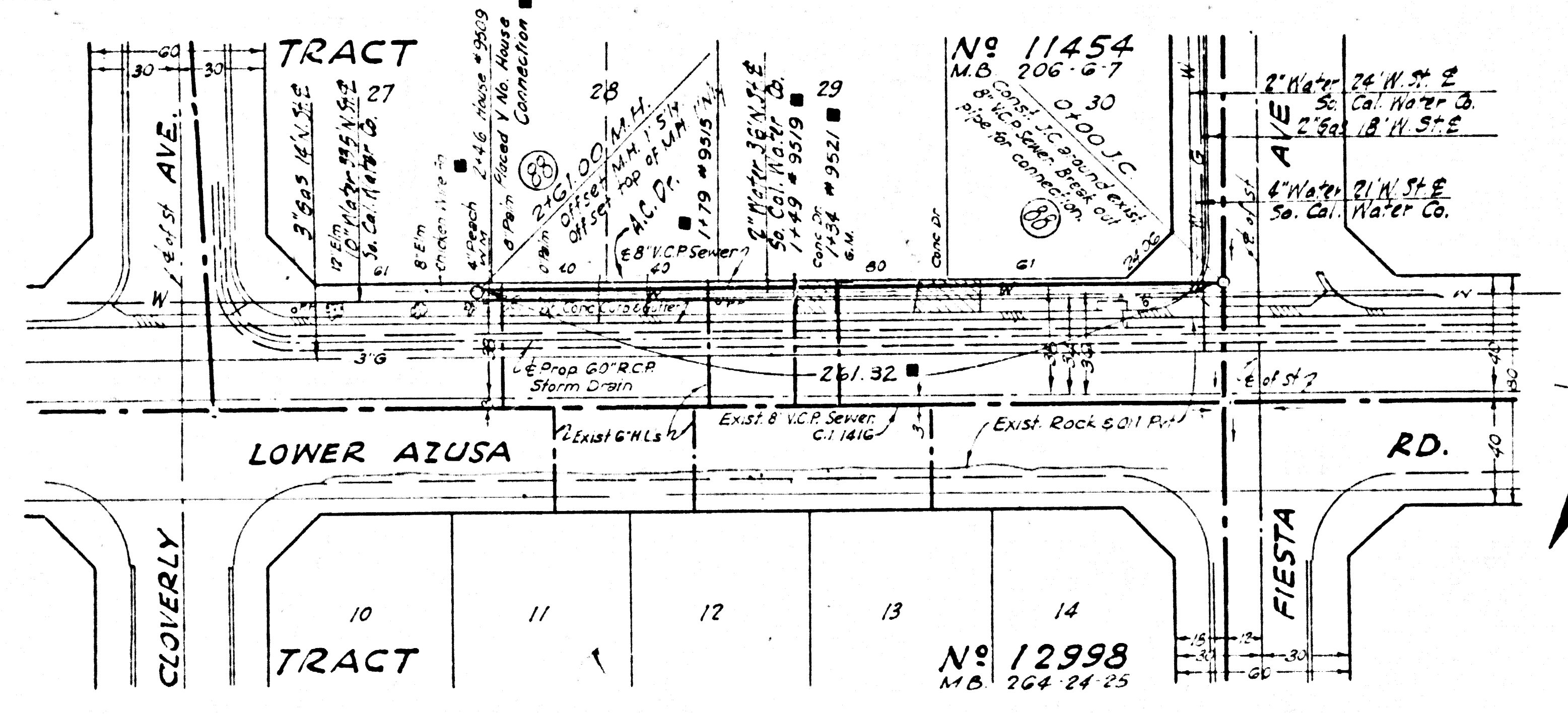
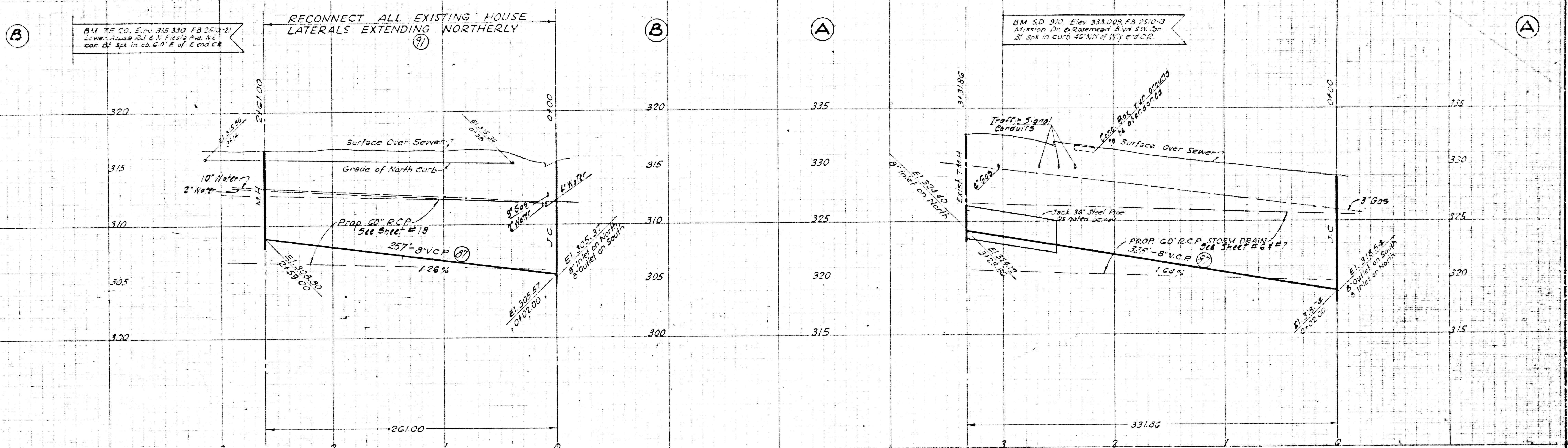


**PROFILE**  
 HORIZ. SCALE 1" = 40'  
 VERT. SCALE 1" = 4'



- GENERAL NOTES:**
1. For legend see Standard Plan 5-a-84
  2. Use cement mortar for all vitrified clay pipe joints.
  3. All structures shall be brick sewer structures per Standard Plan 5-a-104.
  4. Use standard manhole frame & cover per Standard Plan 5-a-117.
  5. Abandoned sewers shall be sealed with brick and cement mortar.
  6. Use Formula #1, Sec. 36, of Standard Specifications to compute allowance for sag.
  7. Reconstruct trenches within the paved areas of streets as noted on the Storm Drain Plans.
  8. All vitrified clay pipe shall be extra strength.

**PLAN**  
 SCALE 1" = 40'

PREPARED BY <b>JOHN A. LAMBIE</b> COUNTY ENGINEER		REVISIONS MARK DATE DESCRIPTION 12-18-67 "As Built"		LOS ANGELES COUNTY FLOOD CONTROL DISTRICT PROJECT NO. 524 <b>ROSEMEAD</b>
RECOMMENDED BY <i>[Signature]</i> SANITARY DISTRICT ENGINEER		APPROVED BY <i>[Signature]</i> COUNTY ENGINEER		
DRAWN BY: WJC CHECKED BY: JAC DESIGNED BY: WJC IN CHARGE: JAC DATE: 12-18-67		DATE: 12-18-67 SHEET NO. 23 OF 26		SANITARY SEWER RECONSTRUCTION PLAN AND PROFILE

P.C. 9062 (S.D. No. 524)