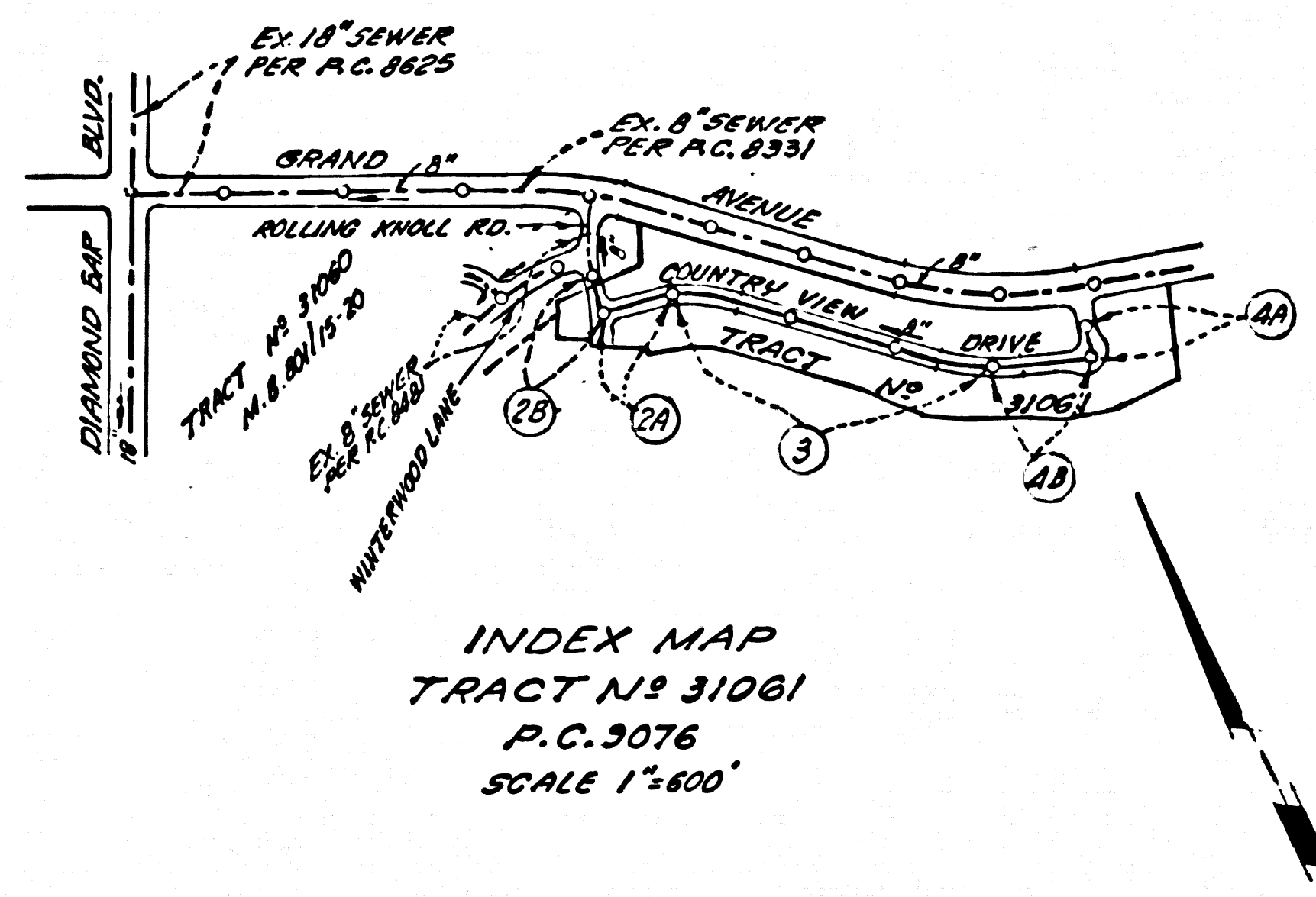


S.M. B.G. 2113 ELEV. 879.127
 B.E.S. @ PATIFINDER ROAD & DIAMOND BAR
 BLVD. THENCE 1.4 MI. N' 1/4 W' ALONG DIAMOND
 BAR BLVD. TO CONC. SLAB FLOOR. S' 1/4 E' END
 OF BARRAN A.D. S.M. 1745. 143 FT. W' 1/4 S' 1/4.
 OTTERBEIN QUAD. 19 62.



- THE FOLLOWING LATEST REVISED STANDARD PLANS ON
 FILE IN THE OFFICE OF THE COUNTY ENGINEER SHALL APPLY
 IN THE CONSTRUCTION OF THIS PROJECT:
- LEGEND S-1
 - MINIMUM PUBLIC SAFETY REQUIREMENTS S-2
 - BRICK MANHOLE S-3
 - NON-REINFORCED PRECAST CONC. MANHOLE S-36
 - LOCKING MANHOLE FRAME & COVER S-35
 - STANDARD MANHOLE STEP S-17
 - BEDDING FOR SEWER PIPE S-21
 - WYE & TEE SUPPORT S-26
 - ALLOWABLE TRENCH WIDTH S-33
 - CRADLING AND EMBANKMENT S-23

COUNTY SANITATION DISTRICTS SHALL BE NOTIFIED 24 HOURS PRIOR
 TO THE FOLLOWING SO THAT REQUIRED INSPECTION CAN BE MADE
 (PHONE: 662-8015 - 638 1163).

NO CONNECTION FOR THE DISPOSAL OF INDUSTRIAL WASTES
 SHALL BE MADE TO SEWERS SHOWN ON THESE DRAWINGS UNTIL
 A PERMIT FOR INDUSTRIAL WASTE WATER DISCHARGE HAS BEEN
 ISSUED BY THE SANITATION DISTRICTS FOR SAID CONNECTION.

ISSUE NO PERMITS UNTIL
 P.C. 8481 IS ACCEPTED

DOUBLE SCALE
 SAN DIMAS BLDG. DIST. NO. 10

PROFILE ALIGNMENT AND GRADE OF P.C. 9076
 SANITARY SEWERS PAGE 1
 TO BE CONSTRUCTED IN
 TRACT NO 31061

PRIVATE CONTRACT NO. 9076

W.S. 39-B-4
 2 SHEETS, 4 PAGES
 SCALE: VERT. 1"=8'
 HORIZ. 1"=40'
 JULY, 1974.

PREPARED IN THE OFFICES OF
 E. L. PEARSON AND ASSOCIATES
 3355 BIRCH STREET, NEWPORT BEACH
 REG. C. E. NO. 20,457

FOR LEGEND SEE PLAN NO. S-1

- NOTES:
- PROVIDE STAKES ON THE PROPERTY LINE OR PROPERTY LINES PRODUCED AT RIGHT ANGLES TO THE SEWER LINE AT THE CENTER LINE OF EACH MANHOLE.
 - NO REPRESENTATIVE OF THE COUNTY ENGINEER WILL SURVEY OR LAY OUT ANY PORTION OF THE WORK.
 - THE PRIVATE ENGINEER SHALL FURNISH THE COUNTY ENGINEER WITH GRADE SHEETS AND STATIONING FOR ALL HOUSE LATERALS AND "T" BRANCHES AND SHALL PROVIDE STAKES FOR THEM AT THEIR PROPER LOCATIONS WITH STATIONING PLAINLY MARKED. ALL HOUSE LATERALS SHALL BE CONSTRUCTED IN A STRAIGHT ALIGNMENT AT RIGHT ANGLES FROM THE MAIN LINE SEWER EXCEPT AS SHOWN ON THE PLANS. HOUSE LATERALS FROM CHIMNEYS SHALL NOT HAVE AN ANGLE OF LESS THAN 45° WITH THE MAIN LINE SEWER. ANY CHANGE IN ALIGNMENT SHALL BE REQUESTED IN WRITING BY THE PRIVATE ENGINEER.
 - THE PRIVATE ENGINEER SHALL FURNISH THE HOUSE LATERAL DEPTH AT THE PROPERTY LINE BELOW THE TOP OF CURB ELEVATION FOR EACH HOUSE LATERAL ON THE GRADE SHEET.
 - NO REVISIONS SHALL BE MADE IN THESE PLANS WITHOUT THE APPROVAL OF THE COUNTY ENGINEER.
 - THE CONTRACTOR SHALL NOTIFY THE CONSTRUCTION DIVISION BY TELEPHONE, (213) 574-7828, AT LEAST TWENTY-FOUR HOURS BEFORE STARTING ANY WORK UNDER THIS CONTRACT.
 - ALL STRUCTURES SHALL BE EITHER BRICK MANHOLES PER S-3 OR PRECAST CONCRETE MANHOLES PER S-36 EXCEPT AS NOTED.
 - WYEs OR TEE BRANCHES MAY BE USED FOR CONNECTIONS TO MAIN LINE SEWERS EXCEPT AS NOTED.
 - MANHOLE TOPS IN UNIMPROVED RIGHTS-OF-WAY TO BE SEE INCHES ABOVE FINISHED GRADE.
 - FULL COMPLIANCE WITH SECTION 304-1.3 OF THE SPECIAL PROVISIONS SHALL BE REQUIRED FOR ALL WORK IN STREETS. OBTAINING A PERMIT UNDER SECTION 304-1.3 OF THE SPECIAL PROVISIONS IS THE RESPONSIBILITY OF THE CONTRACTOR. A QUALIFIED REGISTERED CIVIL ENGINEER SHALL BE INDICATED BY THE PERMITTEE PRIOR TO THE ISSUANCE OF A PERMIT TO EXCAVATE IN A CITY STREET OR IN AN INDUSTRIAL WAREHOUSE.
 - IF A POWER POLE IS WITHIN THREE FEET OF THE SEWER, THE SEWER SHALL BE ENCASED, PER S-23, CASE 2, TWO FEET ON EACH SIDE FROM THE POINT OF INTERFERENCE.
 - IF DURING THE COURSE OF CONSTRUCTION IT IS DETERMINED THAT THERE IS LESS THAN FOUR FEET OF COVER OVER THE TOP OF A MAIN LINE OR HOUSE LATERAL V.C.P. SEWER WHICH IS NOT INDICATED ON THE PLANS, THE PIPE SHALL BE ENCASED PER S-23, CASE 2, UNLESS OTHERWISE APPROVED BY THE COUNTY ENGINEER.
 - HOUSE LATERALS TO BE CONSTRUCTED WITH INVERTS AT PROPERTY LINE & FEET BELOW CURB GRADE EXCEPT AS NOTED.
 - RESURFACE ALL TRENCHES WITHIN PAVED AREAS TO MEET L.A. COUNTY ROAD DEPT. OR CALIFORNIA STATE HIGHWAY REQUIREMENTS IN ACCORDANCE WITH PERMITS.
 - SEWERS TO BE TRENCHED FOR LEANING PER SECTION 304-1.4 OF STD. SPECS. (SPECIAL PROVISIONS).
 - REFER TO SECTION 7-10-4.1 OF THE STD. SPECS. REGARDING SAFETY DEVICES.
 - AN UNITS BETWEEN GROUND AND 4" HYDRATED CLAY PIPE SHALL BE MADE WITH A RUBBER SLEEVE JOINT, TYPE "C" (SEE CIVIL ENGINEERING MANUAL) PER STD. SPECS. 304-1.5.
 - PRIOR TO RESURFACE OF THE PROPOSED SEWER CONSTRUCTION PERMITS BY THE COUNTY ENGINEER THE CONTRACTOR SHALL OBTAIN A PERMIT TO EXCAVATE FROM THE STATE OF CALIFORNIA, DIVISION OF INDUSTRIAL SAFETY.
 - FULL COMPLIANCE WITH SECTION 304-1.3 OF THE SPECIAL PROVISIONS SHALL BE REQUIRED FOR ALL WORK IN STREETS. OBTAINING A PERMIT UNDER SECTION 304-1.3 OF THE SPECIAL PROVISIONS IS THE RESPONSIBILITY OF THE CONTRACTOR. A QUALIFIED REGISTERED CIVIL ENGINEER SHALL BE INDICATED BY THE PERMITTEE PRIOR TO THE ISSUANCE OF A PERMIT TO EXCAVATE IN A CITY STREET OR IN AN INDUSTRIAL WAREHOUSE.

NOTICE TO CONTRACTOR

The existence and location of any underground utility pipes or structures shown on these plans are shown on the basis of a search of the available records. To the best of my knowledge there are no existing utilities except as shown on these plans. The contractor is required to take due precautionary measures to protect the utility lines shown and any other lines not of record or not shown on these plans.

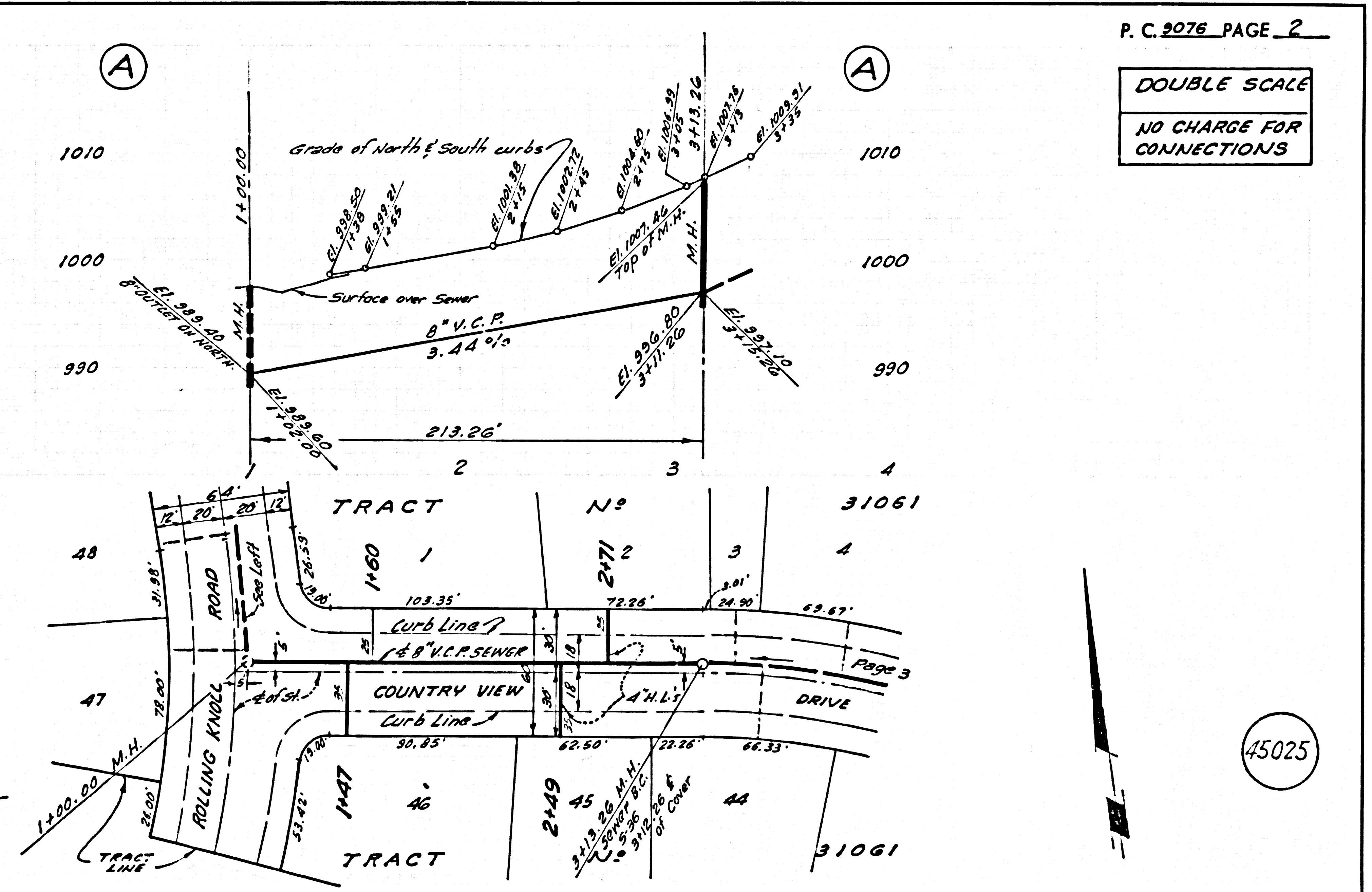
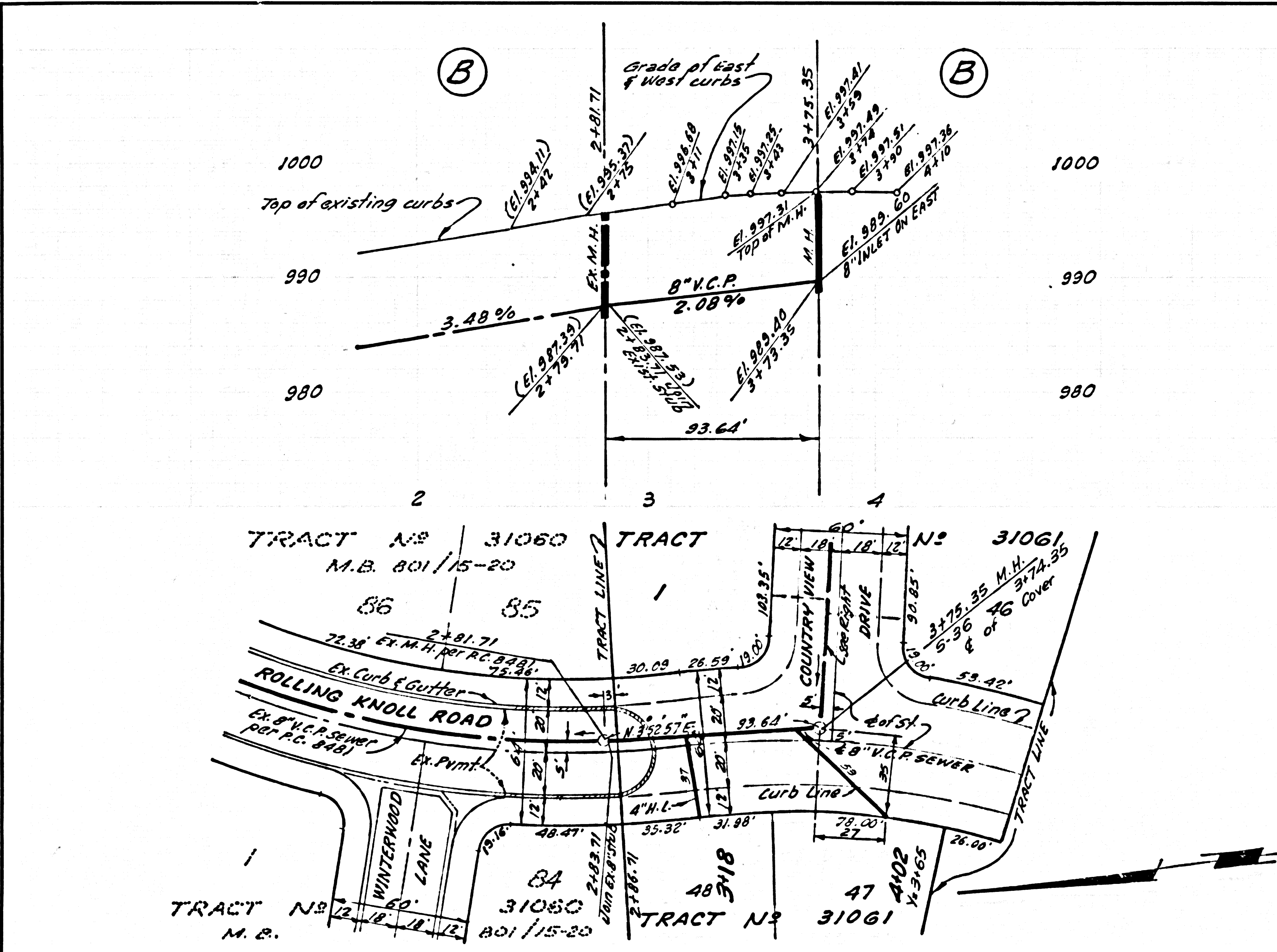
J.P. Schmidt
 REG. 20,457

COUNTY OF LOS ANGELES, CALIFORNIA
 HARVEY T. BRANDT, COUNTY ENGINEER
 J. D. PARKHURST, CHIEF ENGINEER
 CO. SAN DIST. NO. 10
 APPROVED BY: J.P. Schmidt
 OFFICE ENGINEER

CHECKED BY: J.P. Schmidt
 DATE: 7/26/74
 REG. C.E. NO. 20,457

45024

SAN DIMAS BLDG. DIST. 10 U.N. 0250.02



P.C. 9076 PAGE 2

DOUBLE SCALE
 NO CHARGE FOR
 CONNECTIONS

45025

