

CONSTRUCTED IN  
**EASEMENT FOR TRACT NO. 32288**  
 (OUTLET SEWER)

**PRIVATE CONTRACT NO. 9077**  
 255 & 117

W.S. 62  
 2 SHEETS; 4 PAGES  
 SCALE: VERT. 1" = 4'  
 HORIZ. 1" = 40'  
 SEPT. 1974

PREPARED IN THE OFFICES OF  
 SIKAND ENGINEERING ASSOCIATES  
 15205 BURBANK BLVD, VAN NUYS, CALIF  
 BY: *John R. Serna*  
 REG. C. E. No. 772

44890

THE FOLLOWING LATEST REVISED STANDARD PLANS ON FILE IN THE OFFICE OF THE COUNTY ENGINEER SHALL APPLY IN THE CONSTRUCTION OF THIS PROJECT.

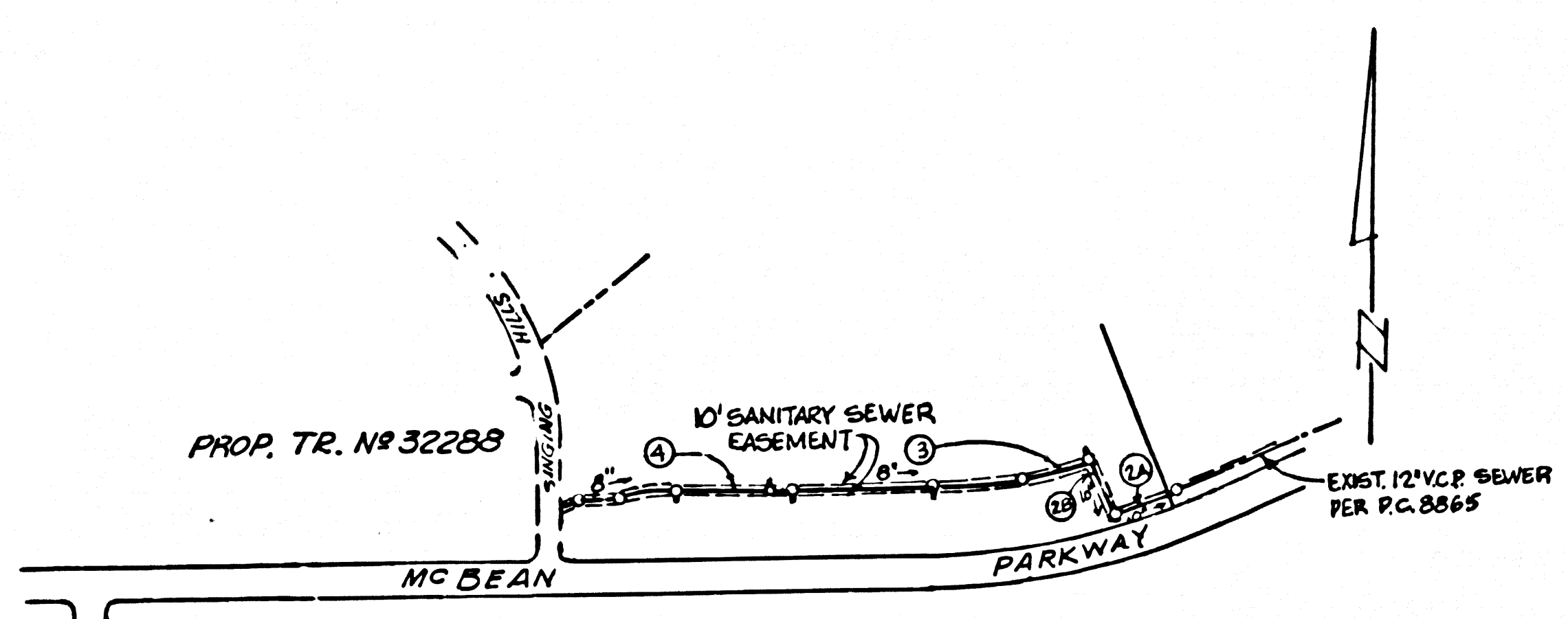
LEGEND	8-1
MINIMUM PUBLIC SAFETY REQUIREMENTS	8-2
BRICK MANHOLE	8-3
STANDARD MANHOLE STEP	8-17
BEDDING FOR SEWER PIPE	8-21
CRADLING AND EASEMENT	8-22
WYE ON TEE SUPPORT	8-26
ALLOWABLE TRENCH WIDTHS	8-28
LOADING MANHOLE FRAME AND COVER	8-32
NON-REINFORCED PRECAST CONCRETE MANHOLE	8-36

COUNTY OF LOS ANGELES, CALIFORNIA  
 HARVEY T. BRANDT, COUNTY ENGINEER  
 JOHN D. PARKHURST, CHIEF ENGINEER  
 APPROVED *Amador C. O.* 10/15/74 REGIONAL ENGINEER  
 APPROVED *J. Postumino* OFFICE ENGINEER  
 CHECKED *Joseph L. ...*  
 REG. C.E. NO. 4390  
 SANTA CLARITA VALLEY BLDG. DIST. 8-2 J.N. 0372.44

- GENERAL NOTES:**
- ELEVATIONS ARE IN FEET ABOVE U.S.C. & G.S. SEA LEVEL DATUM OF 1929.
  - NO REVISIONS SHALL BE MADE IN THESE PLANS WITHOUT THE APPROVAL OF THE COUNTY ENGINEER.
  - NO REPRESENTATIVE OF THE COUNTY ENGINEER WILL SUPERVISE OR LAY OUT ANY PORTION OF THE WORK.
  - GRADIENTS TO WHICH THIS IMPROVEMENT IS TO BE CONSTRUCTED ARE SHOWN ON PLANS AND PROFILES. GRADE POINTS FOR TOP OF CURBS, CENTER LINE OF STREETS, OR CENTER LINE OF ALLEYS ARE SHOWN BY CIRCLES ON PROFILES. AT ALL POINTS BETWEEN DESIGNATED POINTS THE GRADE SHALL BE ESTABLISHED SO AS TO CONFORM TO A STRAIGHT LINE DRAWN BETWEEN SAID DESIGNATED POINTS.
  - THE PRIVATE ENGINEER SHALL FURNISH THE COUNTY ENGINEER WITH GRADE SHEETS AND STATIONING FOR ALL HOUSE LATERALS AND "T" OR "Y" BRANCHES AND SHALL INCLUDE STAKE "X" MARKS AT THEIR PROPER LOCATIONS WITH STATIONING PLAINLY MARKED. ALL HOUSE LATERALS SHALL BE CONSTRUCTED IN STRAIGHT ALIGNMENT AT RIGHT ANGLES FROM THE MAIN LINE SEWER EXCEPT AS SHOWN ON THE PLANS. HOUSE LATERALS FROM CHIMNEYS SHALL NOT HAVE AN ANGLE OF LESS THAN 45° WITH THE MAIN LINE SEWER. ANY CHANGE IN ALIGNMENT SHALL BE REQUESTED BY THE PRIVATE ENGINEER.
  - THE PRIVATE ENGINEER SHALL FURNISH THE HOUSE LATERAL DEPTH AT THE PROPERTY LINE BELOW THE TOP OF CURB ELEVATION FOR EACH HOUSE LATERAL ON THE GRADE SHEET.
  - BEFORE WORK CAN BE STARTED, THE CONTRACTOR MUST OBTAIN A PERMIT TO EXCAVATE IN COUNTY STREETS FROM THE L.A. COUNTY ROAD DEPT., DISTRICT OFFICE NO. 5, AND PAY A FEE TO THE COUNTY ENGINEER, ROOM 1000, COUNTY ENGINEER BLDG., 88 W. SECOND ST., LOS ANGELES, CALIF. 90012. REGIONAL OFFICE, TO COVER THE COST OF CONSTRUCTION INSPECTION AND RECORD PLANS.
  - IF WORK IS TO BE DONE IN A STATE HIGHWAY, A PERMIT MUST BE OBTAINED FROM THE STATE OF CALIFORNIA, DIVISION OF HIGHWAYS, 128 SOUTH SPRING STREET, LOS ANGELES, CALIFORNIA.
  - APPROVAL OF THIS PLAN BY THE COUNTY OF LOS ANGELES DOES NOT CONSTITUTE A REPRESENTATION AS TO THE ACCURACY OF THE LOCATION OF OR THE EXISTENCE OR NON-EXISTENCE OF ANY UNDERGROUND UTILITY PIPE, OR STRUCTURE WITHIN THE LIMITS OF THIS PROJECT. THIS NOTE APPLIES TO ALL PAGES.
  - REFER TO SECTION 7-18.4.1 OF THE STANDARD SPECIFICATIONS, REGARDING SAFETY ORDERS.
  - PRIOR TO THE ISSUANCE OF THE REQUIRED SEWER CONSTRUCTION PERMIT BY THE COUNTY ENGINEER, THE CONTRACTOR SHALL OBTAIN A PERMIT TO EXCAVATE FROM THE STATE OF CALIF., DIVISION OF INDUSTRIAL SAFETY.

- CONSTRUCTION NOTES:**
- WORK SHALL BE CONSTRUCTED ACCORDING TO THE STANDARD SPECIFICATIONS FOR PUBLIC WORKS CONSTRUCTION (1973 EDITION WITH 1974 SUPPLEMENT 3) AND COUNTY ENGINEER SPECIAL PROVISIONS FOR THE CONSTRUCTION OF SANITARY SEWERS DATED 11/13/73 AND SHALL BE PROCEEDED ONLY IN THE PRESENCE OF THE COUNTY ENGINEER.
  - THE CONTRACTOR SHALL NOTIFY THE DESIGN DIVISION BY TELEPHONE, (213) 974-7283, AT LEAST TWENTY-FOUR HOURS BEFORE STARTING ANY WORK UNDER THIS CONTRACT.
  - HOUSE LATERALS TO BE CONSTRUCTED WITH INVERTS AT PROPERTY LINE 4 FEET BELOW CURB GRADE EXCEPT AS NOTED.
  - WYE OR TEE BRANCHES MAY BE USED FOR CONNECTIONS TO MAINLINE SEWERS EXCEPT AS NOTED.
  - ALL STRUCTURES SHALL BE EITHER BRICK MANHOLES PER 8-3 OR PRECAST CONCRETE MANHOLES PER 8-26, EXCEPT AS NOTED.
  - PROVIDE STAKES ON THE PROPERTY LINE OR PROPERTY LINES PRODUCED AT RIGHT ANGLES TO THE SEWER LINE AT THE CENTER LINE OF EACH MANHOLE.
  - MANHOLE TOPS IN UNIMPROVED RIGHTS OF WAY TO BE SIX INCHES ABOVE FINISHED GRADE.
  - VITRIFIED CLAY PIPE JOINTS SHALL BE TYPE "B", "F", OR "G" PER STANDARD SPECIFICATIONS SECTION 300-3.
  - IF A POWER POLE IS WITHIN THREE FEET OF THE SEWER, THE SEWER SHALL BE ENCASED, PER 8-23, CASE II, TWO FEET ON EACH SIDE FROM THE POINT OF INTERFERENCE.
  - IF DURING THE COURSE OF CONSTRUCTION IT IS DETERMINED THAT THERE IS LESS THAN FOUR FEET OF COVER OVER THE TOP OF A MAIN LINE OR HOUSE LATERAL P.C.P. SEWER WHICH IS NOT INDICATED ON THE PLANS, THE PIPE SHALL BE ENCASED PER 8-23, CASE II UNLESS OTHERWISE APPROVED BY THE COUNTY ENGINEER.
  - ALL JOINTS BETWEEN CAST IRON PIPE AND VITRIFIED CLAY PIPE SHALL BE MADE WITH A RUBBER SLEEVE JOINT, TYPE "C" OR "D", WITH GASKING IF NECESSARY PER STANDARD SPECIFICATIONS SECTION 300-2.
  - SEWERS TO BE TESTED FOR LEAKAGE PER SECTION 300-1.4 OF THE STANDARD SPECIFICATIONS AND SPECIAL PROVISIONS.
  - RESURFACE ALL TRENCHES WITHIN PAVED AREAS TO MEET L.A. COUNTY ROAD DEPT. OR CALIFORNIA STATE HIGHWAY REQUIREMENTS IN ACCORDANCE WITH PERMITS.
  - SPECIAL BACKFILL IN EASEMENT CONSTRUCTION:
    - Backfill trench & replace other earth so as to achieve the natural or finished grades & slopes shown on the grading plan approved for this development by the building & safety division.
    - All backfill & earth replaced shall be compacted to a min. of 90% of max. density per A.S.T.M. Standard Method of test D 698-97T as modified. Acceptable certification of such compaction shall be submitted to the design division.

B.M. 4233 ELEV. 1280.014  
 RD. B.M. TAG IN N.C.B. MCBEAN PKWY  
 42 N. + 1240 E. INT. TOURNAMENT RD. G W/O  
 CONC. W.K. ENT. TO LARWIN'S HOUSE TRACT  
 NEWHALL QUAD. 1972

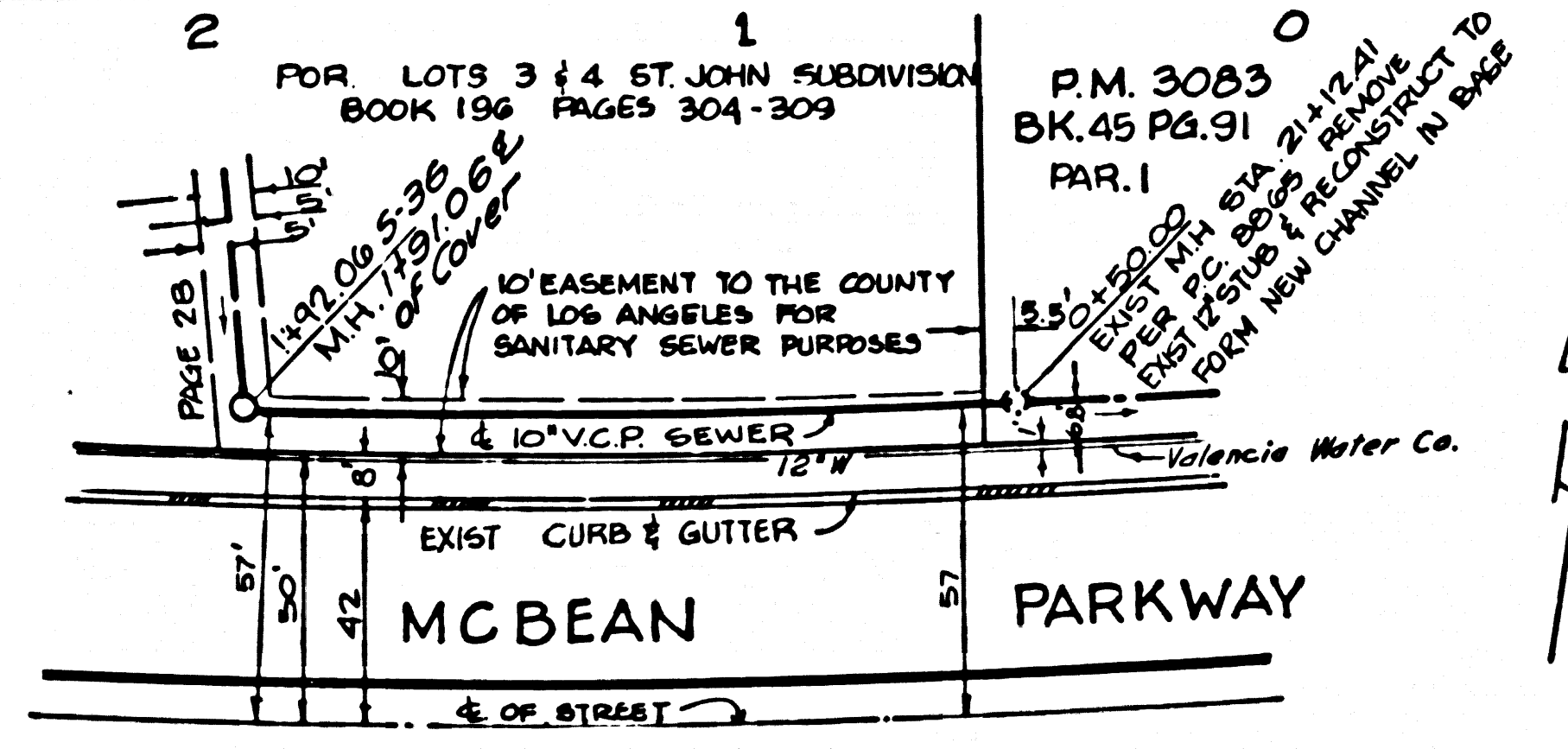
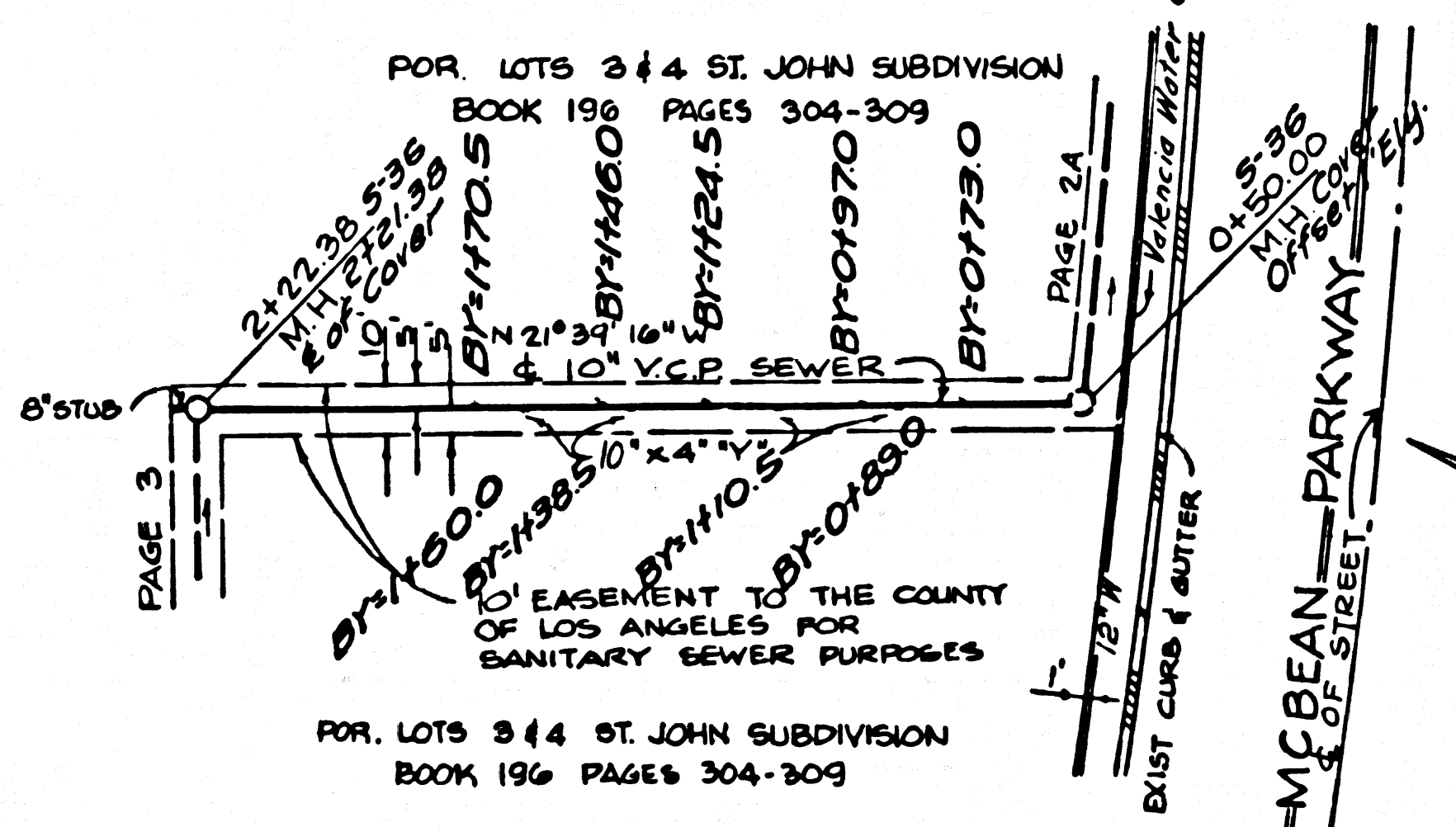
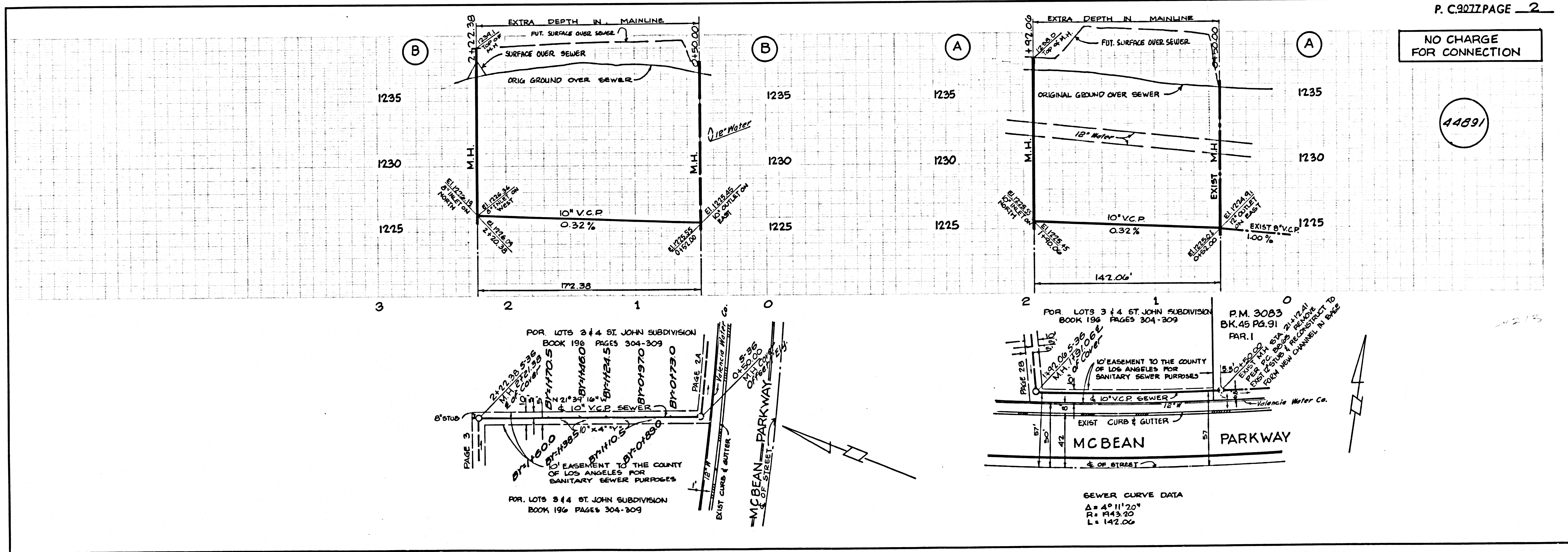


**REVISION**  
 ADJUSTED M.H.'S, ADDED T.M.H. ELEV'S TO PUT SURFACE OVER SEWER. ADDED SURFACE OVER SEWER & MANHOLE DETAILS. ADJUSTED WYE LOCATIONS BETWEEN STA. 4+39 & 7+84  
 APPROVED *Roger ...* DATE 12/16/74  
 10/18/74  
 OFFICE OF THE COUNTY ENGINEER

NOTE: NUMBER IN CIRCLE INDICATES PAGE NUMBER  
**INDEX MAP**  
 SCALE 1" = 500'  
 P.C. NO. 9077

NO CONNECTION FOR THE DISPOSAL OF INDUSTRIAL WASTES SHALL BE MADE TO SEWERS SHOWN ON THESE PLANS UNLESS A PERMIT FOR INDUSTRIAL WASTE WATER DISCHARGE HAS BEEN ISSUED BY THE SANITATION DISTRICTS FOR SAID CONNECTION.  
 COUNTY SANITATION DISTRICTS SHALL BE NOTIFIED 24 HOURS PRIOR TO THE FOLLOWING SO THAT REQUIRED INSPECTION CAN BE MADE.  
 (PHONE: 967-8005)

ACCEPTANCE OF THE PROJECT.



**SEWER CURVE DATA**  
 Δ = 4° 11' 20"  
 R = 143.20'  
 L = 142.06'

