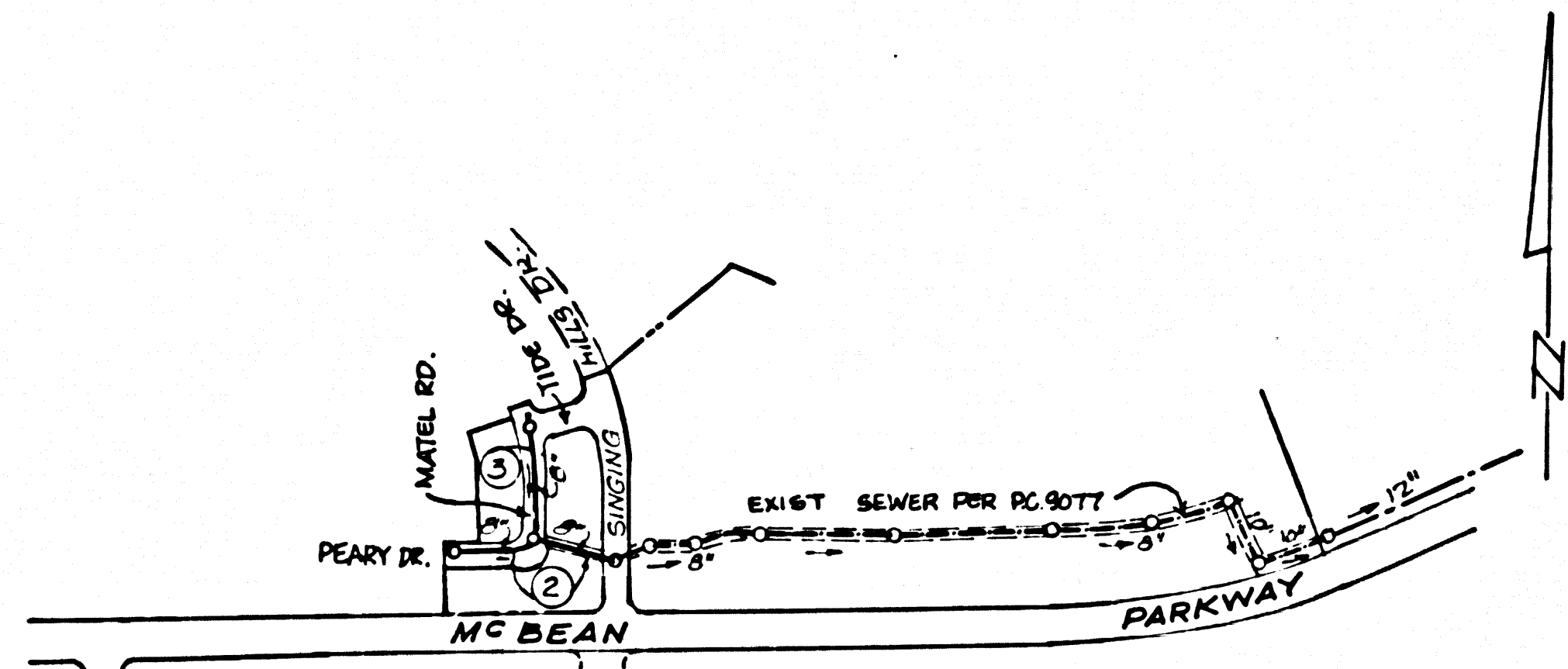


B.M. 5.L.4233 ELEV. 12008.14
 RD. B.M. TAG IN N. CB. McBEAN PKWY
 42 N + 1240E INT. TOURNAMENT RD G.W.D.
 CONC. W.K. ENT TO LARWIN'S HOUSE TRACT
 NEW HALL QUAD. 1972



INDEX MAP
 SCALE 1" = 500'
 P.C. NO. 9078
 TR. NO. 32288

NO CONNECTION FOR THE DEPOSIT OF INDUSTRIAL WASTES
 SHALL BE MADE TO SEWERS SHOWN ON THIS PLAN UNLESS
 A PERMIT FOR INDUSTRIAL WASTE WETLANDS HAS BEEN
 ISSUED BY THE SANITATION DISTRICTS FOR SAID CONNECTION.

COUNTY SANITATION DISTRICTS SHALL BE NOTIFIED 24 HOURS PRIOR
 TO THE FOLLOWING SO THAT REQUIRED INSPECTION CAN BE MADE.
 (PHONE: 960-8005)

ACCEPTANCE OF THE PROJECT

15. "Full compliance with section 906-1.3.3 of the
 special provisions will be required for backfill
 in streets. Certification of backfill compaction and
 core equivalents by a qualified Registered
 Testing Laboratory shall be provided by the permittee
 prior to the issuance of a certificate of partial
 acceptance."

NOTE:
 CONTRACTOR SHALL CONTACT ALL UTILITY
 COMPANIES AND VERIFY LOCATION & DEPTH
 OF UTILITY PRIOR TO ANY EXCAVATION

NOTICE TO CONTRACTOR
 The existence and location of any underground
 utility pipes or structures shown on these plans are
 obtained by a search of the available records.
 To the best of my knowledge there are no existing
 utilities except as shown on these plans.
 The contractor is required to take due precau-
 tionary measures to protect the utility lines shown
 and any other lines not of record or not shown on
 these plans.
John K. Pena 9812

ISSUE NO PERMITS UNTIL
 P.C. 9077 IS ACCEPTED

GENERAL NOTES:

- ELEVATIONS ARE IN FEET ABOVE U.S.C. & G.S.A. LEVEL DATUM OF 1929.
- NO REVISIONS SHALL BE MADE IN THESE PLANS WITHOUT THE APPROVAL OF THE COUNTY ENGINEER.
- NO REPRESENTATIVE OF THE COUNTY ENGINEER WILL SURVEY OR LAY OUT ANY PORTION OF THE WORK.
- GRADES TO WHICH THIS IMPROVEMENT IS TO BE CONSTRUCTED ARE SHOWN ON PLANS AND PROFILES. GRADE POINTS FOR TOP OF CURBS, CENTER LINE OF STREETS, OR CENTER LINE OF ALLEYS ARE SHOWN BY CIRCLES ON PROFILES. AT ALL POINTS BETWEEN DESIGNATED GRADE POINTS THE GRADE SHALL BE ESTABLISHED SO AS TO CONFORM TO A STRAIGHT LINE OR CURVE BETWEEN SAID DESIGNATED POINTS.
- THE PRIVATE ENGINEER SHALL FURNISH THE COUNTY ENGINEER WITH GRADE SHEETS AND STATIONING FOR ALL HOUSE LATERALS AND "T" OR "Y" BRANCHES AND SHALL PROVIDE EASES FOR THEM AT THEIR PROPER LOCATIONS WITH STATIONING PLAINLY MARKED. ALL HOUSE LATERALS SHALL BE CONSTRUCTED IN A STRAIGHT ALIGNMENT AT RIGHT ANGLES FROM THE MAIN LINE SEWER EXCEPT AS SHOWN ON THE PLANS. HOUSE LATERALS FROM CHIMNEYS SHALL NOT HAVE AN ANGLE OF LESS THAN 45° WITH THE MAIN LINE SEWER. ANY CHANGE IN ALIGNMENT SHALL BE REQUESTED BY WRITING BY THE PRIVATE ENGINEER.
- THE PRIVATE ENGINEER SHALL FURNISH THE HOUSE LATERAL DEPTH AT THE PROPERTY LINE BELOW THE TOP OF CURB ELEVATION FOR EACH HOUSE LATERAL ON THE GRADE SHEET.
- BEFORE WORK CAN BE STARTED, THE CONTRACTOR MUST OBTAIN A PERMIT TO EXCAVATE IN COUNTY STREETS FROM THE L.A. COUNTY ROAD DEPT., DISTRICT OFFICE NO. 3, AND PAY A FEE TO THE COUNTY ENGINEER, ROOM 8006, COUNTY BLDG. ROOM 8006 B SECOND FLOOR, LOS ANGELES, OR SANTA CLARITA VALLEY REGIONAL OFFICE, TO COVER THE COST OF CONSTRUCTION INSPECTION AND RECORD PLANS.
- IF WORK IS TO BE DONE IN A STATE HIGHWAY, A PERMIT MUST BE OBTAINED FROM THE STATE OF CALIFORNIA, DIVISION OF HIGHWAYS, 120 SOUTH SPRING STREET, LOS ANGELES, CALIFORNIA.
- APPROVAL OF THIS PLAN BY THE COUNTY OF LOS ANGELES DOES NOT CONSTITUTE A REPRESENTATION AS TO THE ACCURACY OF THE LOCATION OF OR THE EXISTENCE OR NON-EXISTENCE OF ANY UNDERGROUND UTILITY PIPE, OR STRUCTURE WITHIN THE LIMITS OF THE PROJECT. THIS NOTE APPLIES TO ALL PAGES.
- REFER TO SECTION 7-18.41 OF THE STANDARD SPECIFICATIONS, REGARDING SAFETY ORDERS.
- Prior to the issuance of the required sewer construction permit by the County Engineer, the contractor shall obtain a permit to excavate from the State of California, Division of Industrial Safety.

CONSTRUCTION NOTES:

- WORK SHALL BE CONSTRUCTED ACCORDING TO THE STANDARD SPECIFICATIONS FOR PUBLIC WORKS CONSTRUCTION (1973 EDITION WITH 1974 SUPPLEMENT) AND COUNTY ENGINEER SPECIAL PROVISIONS FOR THE CONSTRUCTION OF SANITARY SEWERS DATED MARCH 1, 1974, AND SHALL BE PRESENTED ON SITE IN THE PRESENCE OF THE COUNTY ENGINEER.
- THE CONTRACTOR SHALL NOTIFY THE DESIGNER BY TELEPHONE, (213)-974-7283, AT LEAST TWENTY-FOUR HOURS BEFORE STARTING ANY WORK UNDER THIS CONTRACT.
- HOUSE LATERALS TO BE CONSTRUCTED WITH INVERTS AT PROPERTY LINE 6 FEET BELOW CURB GRADE EXCEPT AS NOTED.
- TYPE OR THE BRANCHES MAY BE USED FOR CONNECTION TO MAINLINE SEWERS EXCEPT AS NOTED.
- ALL STRUCTURES SHALL BE EITHER BRICK MANHOLES PER 5-2 OR PRECAST CONCRETE MANHOLES PER 5-36, EXCEPT AS NOTED.
- PROVIDE STAKES ON THE PROPERTY LINE OR PROPERTY LINES PRODUCED AT RIGHT ANGLES TO THE CENTER LINE AT THE CENTER LINE OF EACH MANHOLE.
- MANHOLES TOPS IN UNIMPROVED RIGHTS OF WAY TO BE SIX INCHES ABOVE FINISHED GRADE.
- VITRIFIED CLAY PIPE JOINTS SHALL BE TYPE "D", "F", OR "G" PER STANDARD SPECIFICATIONS SECTION 308-3.
- IF A POWER POLE IS WITHIN THREE FEET OF THE SEWER, THE SEWER SHALL BE ENCASED, PER 5-23, CASE II, TWO FEET ON EACH SIDE FROM THE POINT OF INTERFERENCE.
- IF DURING THE COURSE OF CONSTRUCTION IT IS DETERMINED THAT THERE IS LESS THAN FOUR FEET OF COVER OVER THE TOP OF A MAIN LINE OR HOUSE LATERAL V.C.P. SEWER WHICH IS NOT INDICATED ON THE PLANS, THE PIPE SHALL BE ENCASED PER 5-23, CASE II UNLESS OTHERWISE APPROVED BY THE COUNTY ENGINEER.
- ALL JOINTS BETWEEN CAST IRON PIPE AND VITRIFIED CLAY PIPE SHALL BE MADE WITH A RUBBER SLEEVE JOINT, TYPE "C" OR "B", WITH BUSHING IF NECESSARY PER STANDARD SPECIFICATIONS, SECTION 308-2.
- SEWERS TO BE TESTED FOR LEAKAGE PER SECTION 304-1.4 OF THE STANDARD SPECIFICATIONS AND SPECIAL PROVISIONS.
- RESURFACE ALL TRENCHES WITHIN PAVED AREAS TO MEET L.A. COUNTY ROAD DEPT. OR CALIFORNIA STATE HIGHWAY REQUIREMENTS IN ACCORDANCE WITH PERMITS.
- SPECIAL BACKFILL IN EASEMENT CONSTRUCTION**
 A. Backfill trench and replace other earth so as to achieve the natural or finished grades and slopes shown on the grading plan approved for this development by the Bldg & Safety Division.
 B. All backfill and earth replaced shall be compacted to a min. of 90% of Proctor density per A.S.T.M. Standard Method of test D 698-57T as modified. Acceptable certification of such compaction shall be submitted to the Design Division.

TRACT NO. 32288
 PRIVATE CONTRACT NO. 9078

255 5 117
 W.S.G.2
 2 SHEETS, 3 PAGES
 44894
 SCALE: VERT. 1" = 4'
 HORIZ. 1" = 40'
 SEPT. 1974
 PREPARED IN THE OFFICES OF
 SIKAND ENGINEERING ASSOCIATES
 15205 BURBANK BLVD. VAN NUYS, CALIF. 91401
 BY: *John K. Pena*
 REG. C. E. No. 4812

THE FOLLOWING LATEST REVISED STANDARD PLANS ON FILE IN THE OFFICE OF THE COUNTY ENGINEER SHALL APPLY IN THE CONSTRUCTION OF THIS PROJECT.

LEGEND	5-1
MINIMUM PUBLIC SAFETY REQUIREMENTS	5-2
BRICK MANHOLE	5-3
STANDARD MANHOLE 6" DIA.	5-17
SEEDING FOR SEWER PIPE	5-21
CRADLING AND ENCASEMENT	5-23
WYE OR TEE SUPPORT	5-26
ALLOWABLE TRENCH WIDTHS	5-30
LOCKING MANHOLE FRAMES AND COVERS	5-31
NON-REINFORCED PRECAST CONCRETE MANHOLE	5-32

COUNTY OF LOS ANGELES, CALIFORNIA

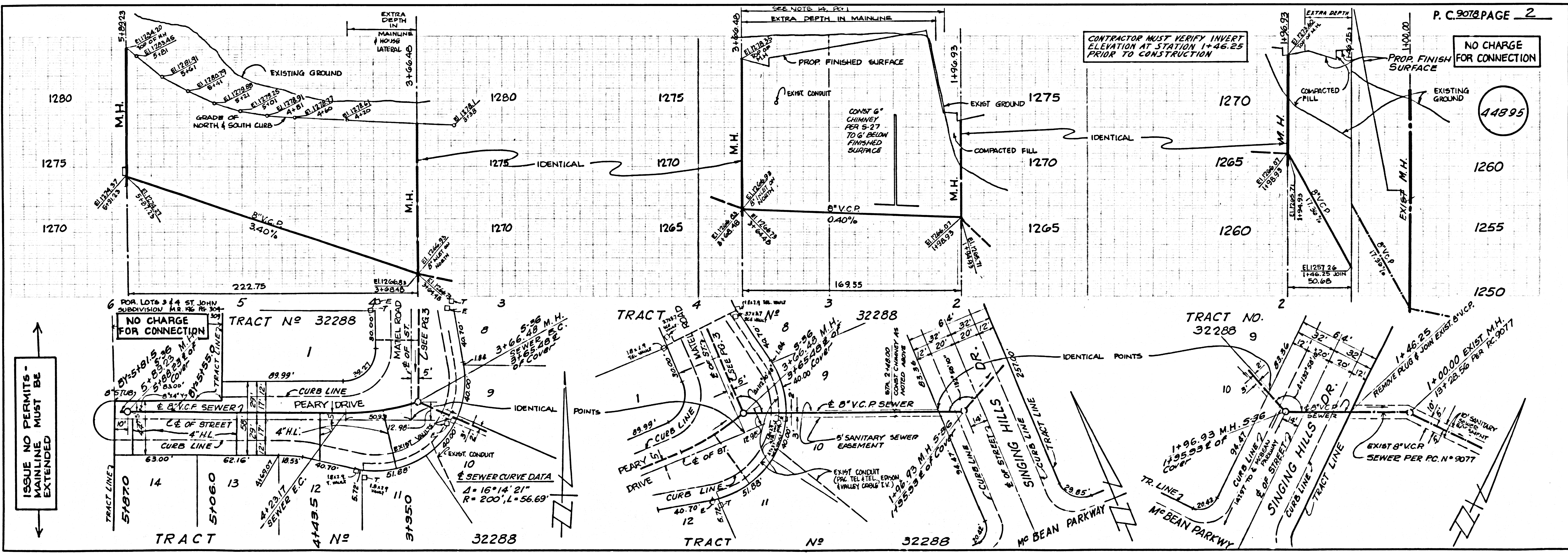
HARVEY T. BRANDT, COUNTY ENGINEER JOHN D. PARKHURST, CHIEF ENGINEER

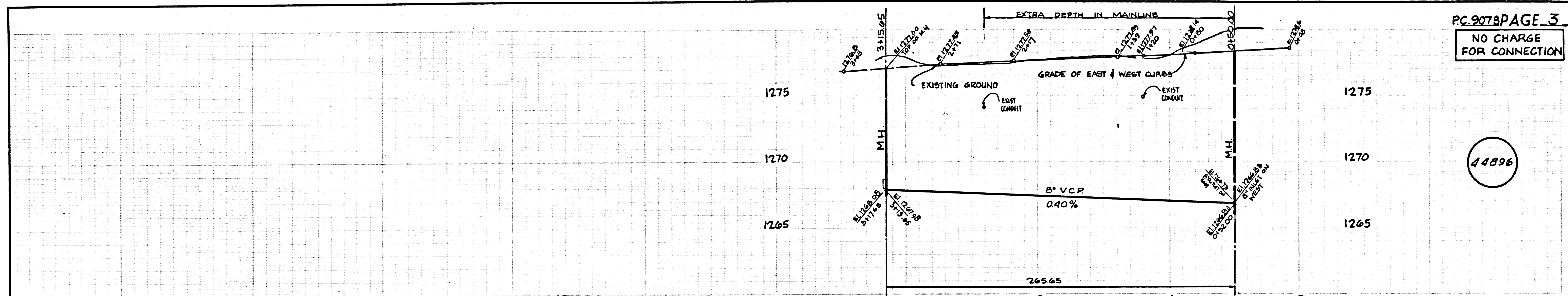
APPROVED *Amund* 10/15/74 APPROVED *P. Parkhurst*
 REGIONAL ENGINEER (DATE) OFFICE ENGINEER

CHECKED *Rosenfeld* 11/15/74
 (DATE)

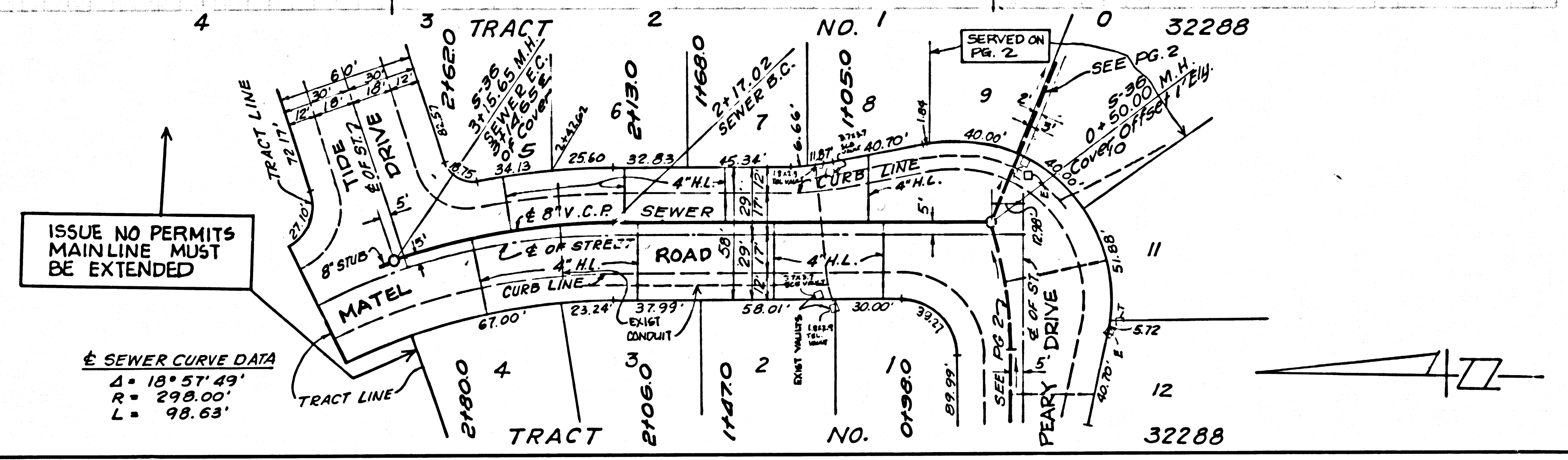
REG. C.E. NO. 4330

SANTA CLARITA VALLEY BLDG. DIST. B.2. I.N. 0250.02.





44896



SEWER CURVE DATA
 $\Delta = 18^\circ 57' 49''$
 $R = 298.00'$
 $L = 98.63'$