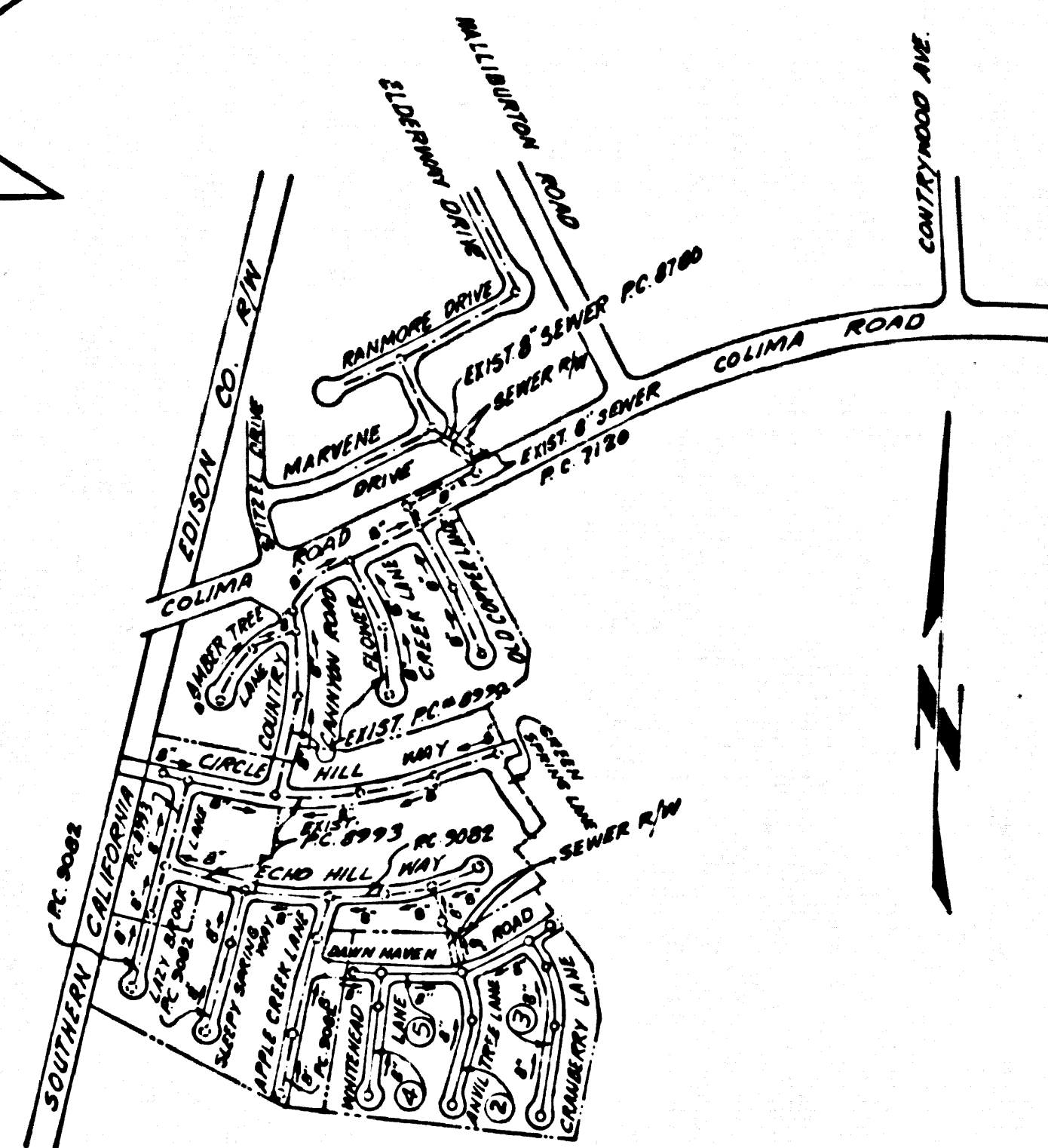


B.M. B.G. 3825 ELEV. 489.502
 ROBM TAG IN CURB 42' S/C COLIMA
 ROAD & 08MI. EAST PUNTA DEL
 ESTE DRIVE
 OTTERBEIN QUAD. 1970.



INDEX MAP
 SCALE: 1" = 600'
 P.C. 9083

ISSUE NO PERMITS UNTIL
 P.C. 8990 & 8993 AND
 9082 ARE ACCEPTED

GENERAL NOTES:

1. ELEVATIONS ARE IN FEET UNLESS OTHERWISE NOTED.
2. NO BYPASS SHALL BE MADE IN THESE PLANS WITHOUT THE APPROVAL OF THE COUNTY ENGINEER.
3. NO IMPROVEMENTS OF THE COUNTY ENGINEER WILL BE MADE OR LAY OUT ANY PORTION OF THE WORK.
4. GRADES TO WHICH THIS IMPROVEMENT IS TO BE CONSTRUCTED ARE SHOWN ON PLANS AND PROFILES. GRADE POINTS FOR TOP OF CURB, CENTER LINE OF STREET, OR CENTER LINE OF ALLEY ARE SHOWN BY CIRCLES ON PROFILES. AT ALL POINTS BETWEEN BEING, MARKED POINTS THE GRADE SHALL BE ESTABLISHED SO AS TO CONFORM TO A STRAIGHT LINE DRAWN BETWEEN SAID MARKED POINTS.
5. THE PRIVATE ENGINEER SHALL FURNISH THE COUNTY ENGINEER WITH GRADE SHEETS AND STATIONING FOR ALL HOUSE LATERALS AND "T" OR "Y" BRANCHES AND SHALL PROVIDE STAKES FOR THEM AT THEIR PROPER LOCATIONS WITH STATIONING PLAINLY MARKED. ALL HOUSE LATERALS SHALL BE CONSTRUCTED IN A STRAIGHT ALIGNMENT AT RIGHT ANGLES FROM THE MAIN LINE SEWER EXCEPT AS SHOWN ON THE PLANS. HOUSE LATERALS FROM CHIMNEYS SHALL NOT HAVE AN ANGLE OF LESS THAN 45° WITH THE MAIN LINE SEWER. ANY CHANGE IN ALIGNMENT SHALL BE REQUESTED IN WRITING BY THE PRIVATE ENGINEER.
6. THE PRIVATE ENGINEER SHALL FURNISH THE HOUSE LATERAL DEPTH AT THE PROPERTY LINE BELOW THE TOP OF CURB ELEVATION FOR EACH HOUSE LATERAL ON THE GRADE SHEET.
7. BEFORE WORK CAN BE STARTED, THE CONTRACTOR MUST OBTAIN A PERMIT TO EXCAVATE IN COUNTY STREETS FROM THE L.A. COUNTY ROAD DEPT., DISTRICT OFFICE NO. 2, AND PAY A FEE TO THE COUNTY ENGINEER, 200 E. BOWLING, SAN DIMAS REGIONAL OFFICE, TO COVER THE COST OF CONSTRUCTION INSPECTION AND RECORD PLANS.
8. IF WORK IS TO BE DONE IN A STATE HIGHWAY, A PERMIT MUST BE OBTAINED FROM THE STATE OF CALIFORNIA, DIVISION OF HIGHWAYS, 120 SOUTH SHAW STREET, LOS ANGELES, CALIFORNIA.
9. APPROVAL OF THIS PLAN BY THE COUNTY OF LOS ANGELES DOES NOT CONSTITUTE A REPRESENTATION AS TO THE ACCURACY OF THE LOCATION OF OR THE EXISTENCE OR NON-EXISTENCE OF ANY UNDERGROUND UTILITY PIPE, OR STRUCTURE WITHIN THE LIMITS OF THE PROJECT. THE NOTE APPLIES TO ALL PAGES.
10. REFER TO SECTION 716.41 OF THE STANDARD SPECIFICATIONS, REGARDING SAFETY ORDERS.
11. "FEE" TO REISSUE OF THE REQUIRED SEWER CONSTRUCTION PERMIT BY THE COUNTY ENGINEER, THE CONTRACTOR SHALL OBTAIN A PERMIT TO EXCAVATE FROM THE STATE OF CALIFORNIA, DIVISION OF INDUSTRIAL SAFETY.

QUANTITY QUOTATIONS DISTRICTS SHALL BE NOTIFIED 24 HOURS BEFORE TO THE FOLLOWING, SO THAT REQUIRED INSPECTIONS CAN BE MADE.
 (PHONE NO. 681-1111)

NO CONNECTION FOR THE DISPOSAL OF INDUSTRIAL WASTE SHALL BE MADE TO SEWERS SHOWN ON THESE DRAWINGS UNLESS A PERMIT FOR INDUSTRIAL WASTE DISCHARGE HAS BEEN ISSUED BY THE SANITATION DISTRICTS FOR SAID CONNECTION.

CONSTRUCTION NOTES:

1. WORK SHALL BE CONSTRUCTED ACCORDING TO THE STANDARD SPECIFICATIONS FOR PUBLIC WORKS CONSTRUCTION 1972 EDITION WITH 1974 SUPPLEMENT AND COUNTY ENGINEER SPECIAL PROVISIONS FOR THE CONSTRUCTION OF SANITARY SEWERS DATED MARCH 1, 1974.
2. THE CONTRACTOR SHALL NOTIFY THE "SEWER" DIVISION BY TELEPHONE, (818) 974-7288, AT LEAST TWENTY-FOUR HOURS BEFORE STARTING ANY WORK UNDER THIS CONTRACT.
3. HOUSE LATERALS TO BE CONSTRUCTED WITH INVERTS AT PROPERTY LINE A FEET BELOW CURB GRADE EXCEPT AS NOTED.
4. WYE OR TE BRANCHES MAY BE USED FOR CONNECTIONS TO MAINLINE SEWERS EXCEPT AS NOTED.
5. ALL STRUCTURES SHALL BE EITHER BRICK MANHOLES PER 5-3 OR PRECAST CONCRETE MANHOLES PER 5-36, EXCEPT AS NOTED.
6. PROVIDE STAKES ON THE PROPERTY LINE OR PROPERTY LINES PRODUCERS AT RIGHT ANGLES TO THE SEWER LINE AT THE CENTER LINE OF EACH MANHOLE.
7. MANHOLE TOPS IN UNIMPROVED RIGHTS OF WAY TO BE SIX INCHES ABOVE FINISHED GRADE.
8. WITHIN CLAY PIPE JOINTS SHALL BE TYPE "B", "C", OR "D" PER STANDARD SPECIFICATIONS SECTION 506.2.
9. IF A POWER POLE IS WITHIN THREE FEET OF THE SEWER, THE SEWER SHALL BE ENCASED PER 5-21, CASE II, TWO FEET ON EACH SIDE FROM THE POINT OF INTERFERENCE.
10. IF DURING THE COURSE OF CONSTRUCTION IT IS DETERMINED THAT THERE IS LESS THAN FOUR FEET OF COVER OVER THE TOP OF A MAIN LINE OR HOUSE LATERAL V.C.P. SEWER WHICH IS NOT INDICATED ON THE PLANS, THE PIPE SHALL BE ENCASED PER 5-21, CASE II UNLESS OTHERWISE APPROVED BY THE COUNTY ENGINEER.
11. ALL JOINTS BETWEEN CLAY PIPE AND WITHIN CLAY PIPE SHALL BE MADE WITH A RUBBER SLUVEE JOINT, TYPE "C" OR "D", FURTH BURNING IS NECESSARY PER STANDARD SPECIFICATIONS, SECTION 506.2.
12. SEWERS TO BE TESTED FOR LEAKAGE PER SECTION 506.1.6 OF THE STANDARD SPECIFICATIONS AND SPECIAL PROVISIONS.
13. RESURFACE ALL EXCAVATED AREAS WITHIN PAVED AREAS TO MEET L.A. COUNTY ROAD DEPT. OF CALIFORNIA STATE HIGHWAY REQUIREMENTS IN ACCORDANCE WITH PERMITS.
14. FULL COMPLIANCE WITH SECTION 506.1.2 OF THE SPECIAL PROVISIONS WILL BE REQUIRED FOR BACKFILL IN STREETS. CERTIFICATION OF BACKFILL COMPACTION AND SAND EQUIVALENT BY A QUALIFIED, REGISTERED TESTING LABORATORY SHALL BE PROVIDED BY THE PERMITTEE PRIOR TO THE ISSUANCE OF A CERTIFICATE OF PARTIAL ACCEPTANCE.

CONSTRUCTED IN
 TRACT NO. 31050
 PRIVATE CONTRACT NO. 9083

W.S. 38, B-3
 3 SHEETS, 5 PAGES
 SCALE: HORIZ. 1" = 40'
 VERT. 1" = 4'
 SEPTEMBER, 1974
 PREPARED IN THE OFFICES OF
 HOPEN, HEDLUND & DARTST, INC.
 3030 W. MAIN STREET
 ALHAMBRA, CALIF.
 REG. C. E. No. 14075

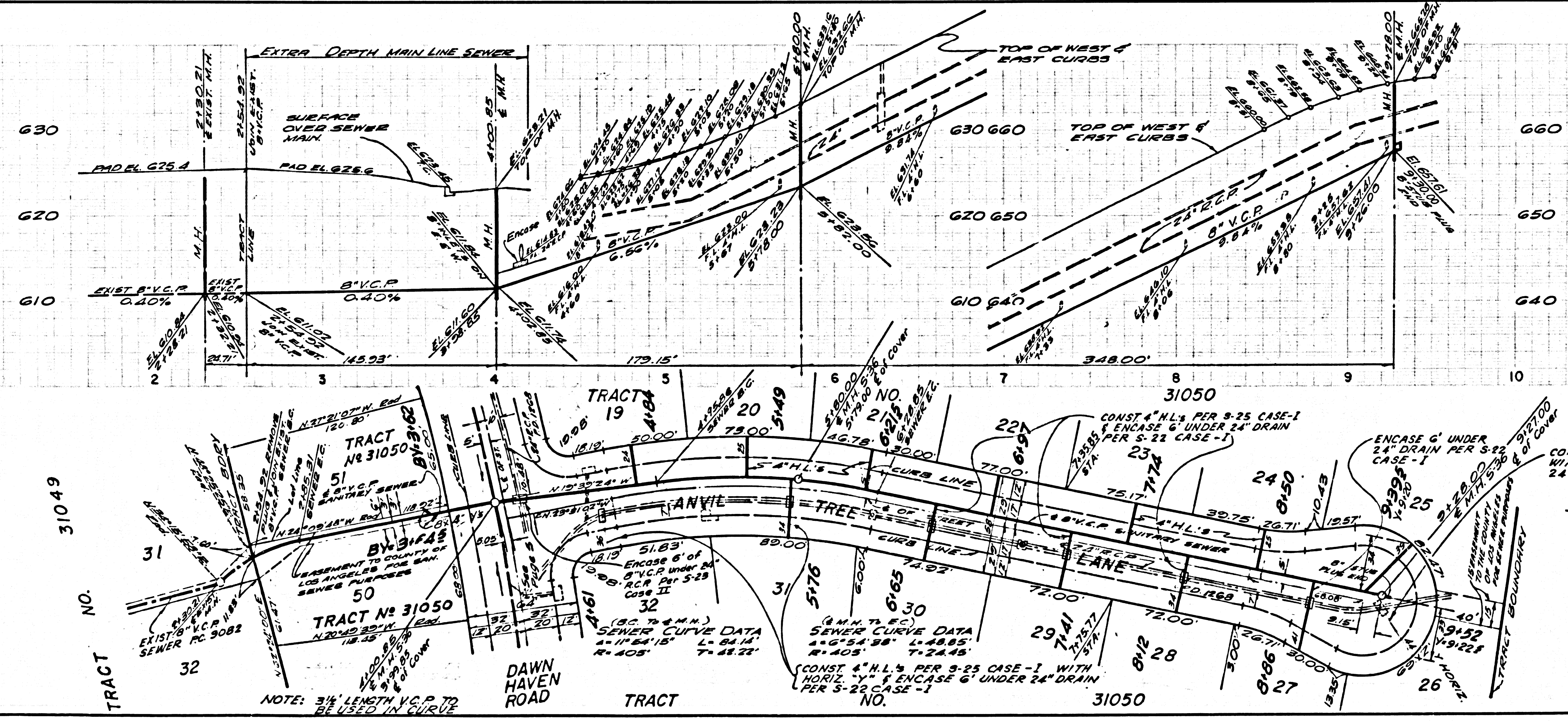
THE FOLLOWING LATEST REVISED STANDARD PLANS ON FILE IN THE OFFICE OF THE COUNTY ENGINEER SHALL APPLY IN THE CONSTRUCTION OF THIS PROJECT:

SEWER	5-1
MINIMUM PUBLIC SAFETY REQUIREMENTS	5-2
BRICK MANHOLES	5-3
STANDARD MANHOLE TOP	5-4
SEEDING FOR SEWER PIPE	5-5
CRACKING AND ENCASING	5-6
WYE OR TE SUPPORT	5-7
ALLOWABLE TRENCH WIDTHS	5-8
LOADING MANHOLE FRAME AND COVER	5-9
NON-REINFORCED PRECAST CONCRETE MANHOLE	5-10
SPECIAL SUPPORT AND PROTECTION	5-11
SPECIAL HOUSE LATERALS	5-12

45274

COUNTY OF LOS ANGELES, CALIFORNIA
 HARVEY T. BRANDT, COUNTY ENGINEER JOHN D. PARKHURST, CHIEF ENGINEER
 APPROVED: *[Signature]* APPROVED: *[Signature]*
 REGIONAL ENGINEER DISTRICT OFFICE ENGINEER
 CHECKED: *[Signature]* DATE: 11/17/75
 W.S. C.E. NO. 17722
 LA PUENTE BLDG. DIST. 2.0 I.N. 0250.02

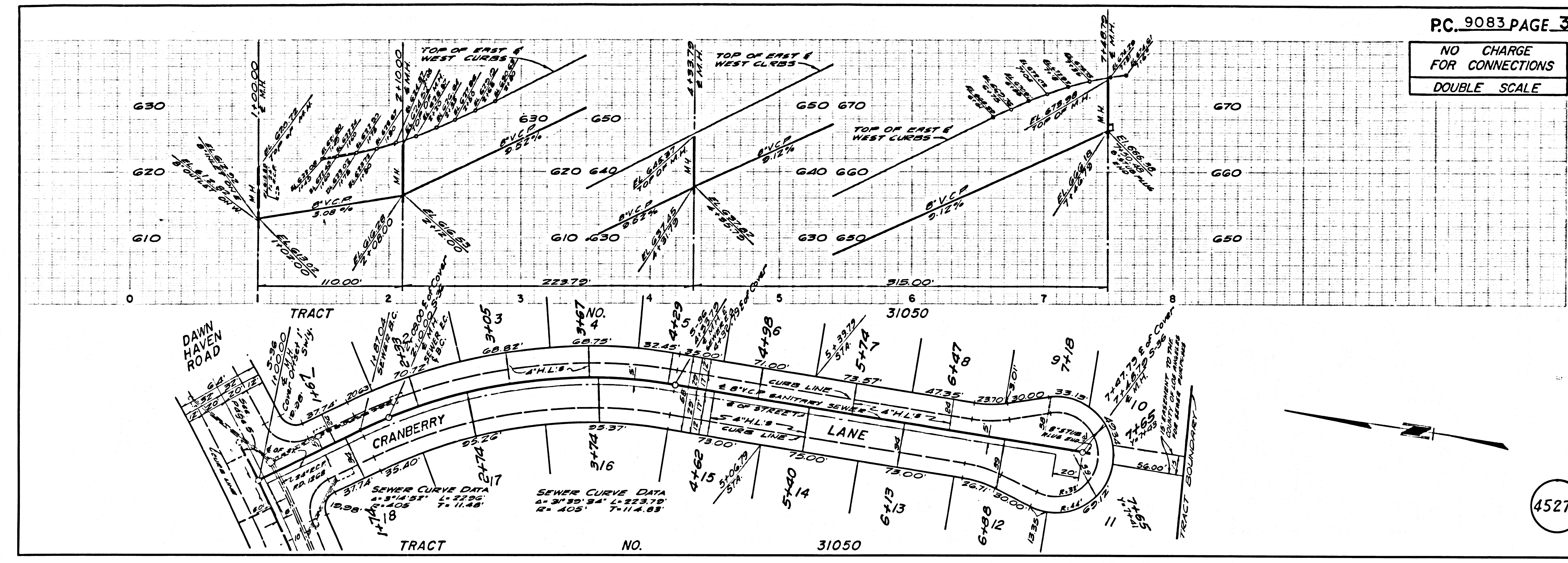
NO CHARGE
 FOR CONNECTIONS
 DOUBLE SCALE



NOTE: 3/4" LENGTH V.C.P. TO BE USED IN CURVES

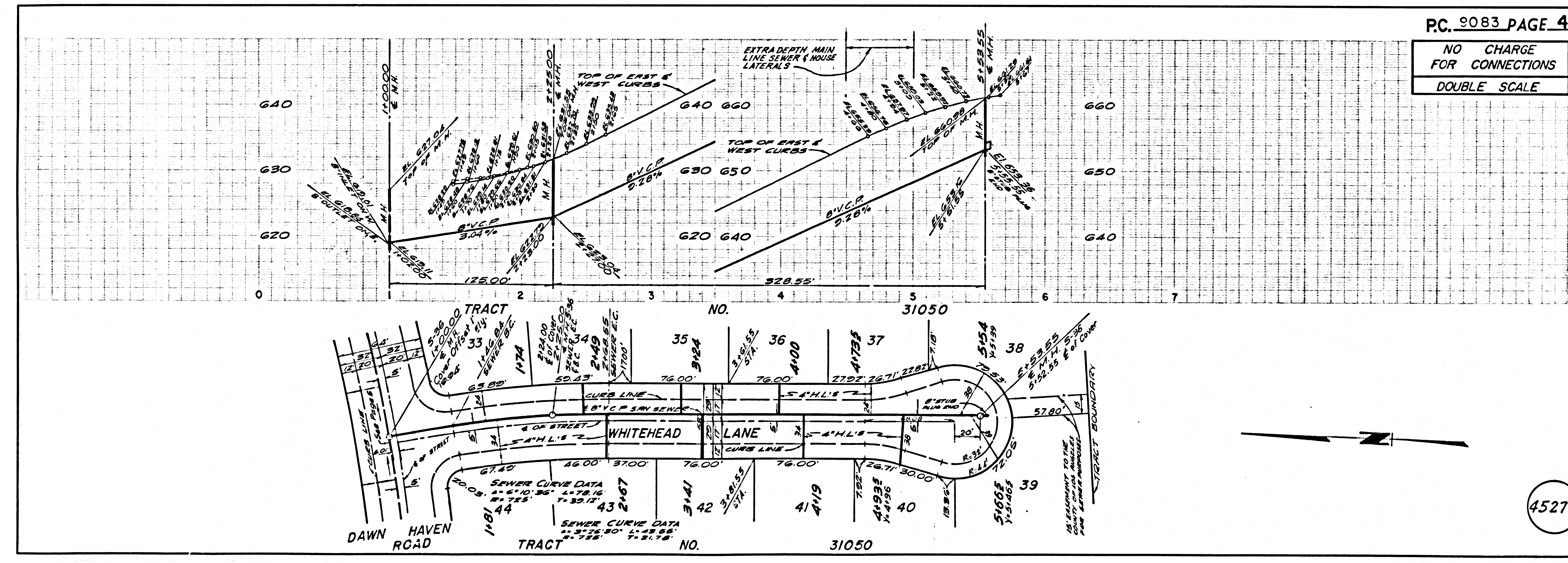
45275

NO CHARGE FOR CONNECTIONS
DOUBLE SCALE



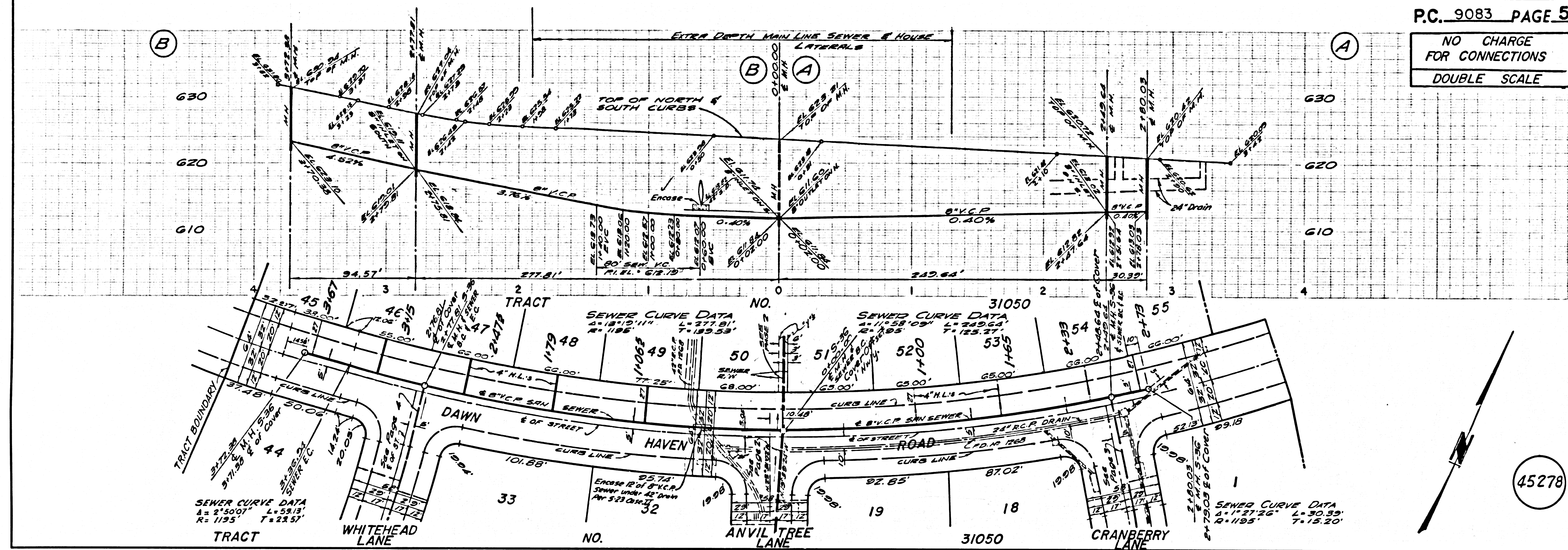
45276

NO CHARGE FOR CONNECTIONS
DOUBLE SCALE



45277

NO CHARGE
FOR CONNECTIONS
DOUBLE SCALE



45278

PAGE