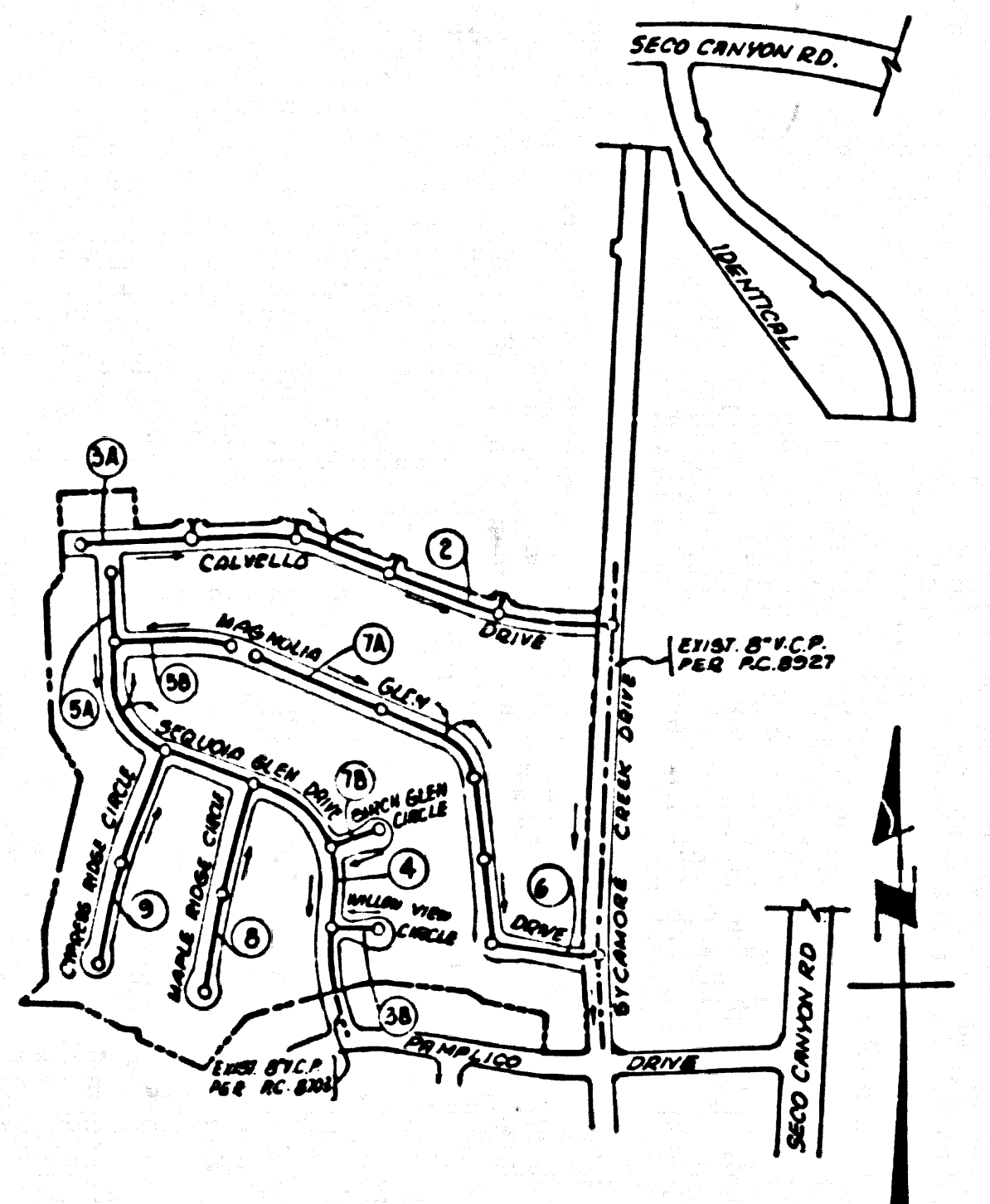


B.M. BL 654 ELEV. 1366.65  
 1.1' NEAR COR @ N.E. COR. SAN  
 FRANCISCO CANYON RD. S. SERVICE  
 TO LOS ROYALES DR. 50' N. W. COR.  
 & S.W. COR. (S.M. E.V.)  
 WINDMILL QUAD. 19 65.



NUMBERS & CIRCLES  
 INDICATE PAGE NUMBERS

INDEX MAP  
 SCALE: 1"=50'  
 P.C. 9087  
 TRACT NO. 29852

THE FOLLOWING COUNTY ENGINEER STANDARD  
 PLANS APPLY TO THIS PROJECT

LEGEND  
 MINIMUM PUBLIC SAFETY REQUIREMENTS 5-1  
 DECK ALLOWABLE 5-2  
 MAN-REINFORCED PRECAST CONC. MANHOLE 5-3  
 LOCATING MANHOLE FRAME AND COVER 5-35  
 STANDARD MANHOLE STEPS 5-7  
 BIDDING FOR SEWER PIPE 5-9  
 COORDINATE AND ELEVATION 5-13  
 100' AND 150' SUPPORT 5-15  
 PIPE SADDLE FOR HOUSE LATERAL 5-38  
 ALLOWABLE TRENCH WIDTHS 5-38

LOTS 1, 2, 139-150 SERVED BY P.C. 8927

ISSUE NO PERMITS ON PAGES  
 2, 3A, 6 AND 7A UNTIL  
 P.C. 8927 IS ACCEPTED

NO CONNECTION FOR THE DISPOSAL OF INDUSTRIAL WASTES  
 SHALL BE MADE TO SEWERS SHOWN ON THESE DRAWINGS UN-  
 LESS A PERMIT FOR INDUSTRIAL WASTE WATER DISCHARGE HAS BEEN  
 ISSUED BY THE SANITATION DISTRICTS FOR SAID CONNECTION

BEFORE BREAKING INTO OR CONSTRUCTION ON A COUNTY  
 SANITATION DISTRICT SEWER AND PRIOR TO FINAL ACCEPTANCE  
 OF THE PROJECT SANITATION DISTRICT INSPECTOR SHALL BE  
 NOTIFIED BY PHONE 962-8600 SO THAT REQUIRED INSPECTION  
 CAN BE MADE.

DOUBLE SCALE  
 SANTA CLARITA VALLEY BLDG. DIST. NO. 82

- NOTES
- PROVING STAKES ON THE PROPERTY LINE OR PROPERTY LINES PRODUCED AT RIGHT ANGLES TO THE SEWER LINE AT THE CENTER LINE OF EACH MANHOLE.
  - NO REPRESENTATIVE OF THE COUNTY ENGINEER WILL SURVEY OR LAY OUT ANY PORTION OF THE WORK.
  - THE PRIVATE ENGINEER SHALL FURNISH THE COUNTY ENGINEER WITH GRADE SHEETS AND STATIONING FOR ALL HOUSE LATERALS AND MANHOLES BRANCHES AND SHALL PROVIDE STAKES FOR FINAL AT THEIR PROPER LOCATIONS WITH STATIONING PLAINLY MARKED. ALL HOUSE LATERALS SHALL BE CONSTRUCTED IN A STRAIGHT ALIGNMENT AT RIGHT ANGLES FROM THE MAIN LINE SEWER EXCEPT AS SHOWN ON THE PLANS. HOUSE LATERALS FROM CHIMNEYS SHALL NOT HAVE AN ANGLE OF LESS THAN 45° WITH THE MAIN LINE SEWER. ANY CHANGE IN ALIGNMENT SHALL BE REQUESTED IN WRITING BY THE PRIVATE ENGINEER.
  - THE PRIVATE ENGINEER SHALL FURNISH THE HOUSE LATERAL DEPTH AT THE PROPERTY LINE BELOW THE TOP OF CURB ELEVATION FOR EACH HOUSE LATERAL ON THE GRADE SHEET.
  - NO REVISIONS SHALL BE MADE IN THESE PLANS WITHOUT THE APPROVAL OF THE COUNTY ENGINEER.
  - THE CONTRACTOR SHALL NOTIFY THE DEPARTMENT OF PUBLIC WORKS BY TELEPHONE 273-7787, AT LEAST TWENTY-FOUR HOURS BEFORE STARTING ANY WORK UNDER THIS CONTRACT.
  - ALL CONNECTIONS SHALL BE MADE TO SEWER MAINS PER S.D. 8, DEPT. OF PUBLIC WORKS, MANHOLE SCHEDULE 8-10, EXCEPT AS NOTED.
  - ALL HOUSE LATERALS SHALL HAVE PIPE AND MANHOLES CAPS FOR SHALL BE MADE WITH A NUMBER MATCHING SHAFT TYPE "S" OR "S1" (WITH INVERTS AT NECESSARY) PER STANDARD SPEC. SECT. 808-1.
  - MANHOLE TOPS ON UNIMPROVED RIGHTS-OF-WAY TO BE SIX INCHES ABOVE FINISHED GRADE.
  - USE EXTRA STRENGTH PIPE. ALL PIPE IS STANDARD UNLESS NOTED AS NOTED.
  - STANDARD PIPE AND JOINTS SHALL BE 24" DIA. 12' LONG STANDARD SPECIFICATIONS, SECTION 808-2.
  - IF A POWER POLE IS WITHIN THREE FEET OF THE SEWER, THE SEWER SHALL BE ENCASED PER S.D. TWO FEET ON EACH SIDE FROM THE POINT OF INTERFERENCE.
  - HOUSE LATERALS TO BE CONSTRUCTED WITH INVERTS AT PROPERTY LINE & FIVE FEET OVER CURB GRADE EXCEPT AS NOTED.
  - REINFORCE ALL TRENCHES WITHIN HAYES AVENUE TO MEET L.A. COUNTY ROAD DEPT. OR CALIFORNIA STATE HIGHWAY REQUIREMENTS IN ACCORDANCE WITH PERMITS.
  - SEWERS TO BE TRENCH FROM REARLINE PER SEC. 808-1.1.8 OF STANDARD SPEC'S & SPECIAL PROVISIONS.
  - IF A PIPE OR MANHOLE IS FOUND TO BE DEFECTIVE OR DAMAGED BY THE CONTRACTOR, THE CONTRACTOR SHALL BE RESPONSIBLE FOR REPAIRING THE SAME TO ORIGINAL CONDITION OR BETTER. THE CONTRACTOR SHALL BE RESPONSIBLE FOR OBTAINING ALL NECESSARY PERMITS AND APPROVALS FROM THE SANITATION DISTRICTS AND THE COUNTY ENGINEER.
  - ALL CONNECTIONS SHALL BE MADE TO SEWER MAINS PER S.D. 8, DEPT. OF PUBLIC WORKS, MANHOLE SCHEDULE 8-10, EXCEPT AS NOTED.
  - ALL HOUSE LATERALS SHALL HAVE PIPE AND MANHOLES CAPS FOR SHALL BE MADE WITH A NUMBER MATCHING SHAFT TYPE "S" OR "S1" (WITH INVERTS AT NECESSARY) PER STANDARD SPEC. SECT. 808-1.
  - MANHOLE TOPS ON UNIMPROVED RIGHTS-OF-WAY TO BE SIX INCHES ABOVE FINISHED GRADE.
  - USE EXTRA STRENGTH PIPE. ALL PIPE IS STANDARD UNLESS NOTED AS NOTED.
  - STANDARD PIPE AND JOINTS SHALL BE 24" DIA. 12' LONG STANDARD SPECIFICATIONS, SECTION 808-2.
  - IF A POWER POLE IS WITHIN THREE FEET OF THE SEWER, THE SEWER SHALL BE ENCASED PER S.D. TWO FEET ON EACH SIDE FROM THE POINT OF INTERFERENCE.
  - HOUSE LATERALS TO BE CONSTRUCTED WITH INVERTS AT PROPERTY LINE & FIVE FEET OVER CURB GRADE EXCEPT AS NOTED.
  - REINFORCE ALL TRENCHES WITHIN HAYES AVENUE TO MEET L.A. COUNTY ROAD DEPT. OR CALIFORNIA STATE HIGHWAY REQUIREMENTS IN ACCORDANCE WITH PERMITS.
  - SEWERS TO BE TRENCH FROM REARLINE PER SEC. 808-1.1.8 OF STANDARD SPEC'S & SPECIAL PROVISIONS.
  - IF A PIPE OR MANHOLE IS FOUND TO BE DEFECTIVE OR DAMAGED BY THE CONTRACTOR, THE CONTRACTOR SHALL BE RESPONSIBLE FOR REPAIRING THE SAME TO ORIGINAL CONDITION OR BETTER. THE CONTRACTOR SHALL BE RESPONSIBLE FOR OBTAINING ALL NECESSARY PERMITS AND APPROVALS FROM THE SANITATION DISTRICTS AND THE COUNTY ENGINEER.

COLLECT CHARGES  
 AS INDICATED

NOTICE TO CONTRACTOR

The existence and location of any underground utility lines or structures shown on these plans are obtained by a search of the available records to the best of my knowledge there are no existing utilities except as shown on these plans. The contractor is required to take due precautionary measures to protect the utility lines shown and any other lines not shown on these plans.

*A. D. Cooper*  
 10-26-76

PROFILE ALIGNMENT AND GRADE OF  
 SANITARY SEWERS PAGE 1  
 CONSTRUCTED IN  
 TRACT NO. 29852

PRIVATE CONTRACT NO. 9087  
 INDEX 276 5121, 276 5125  
 W.S. 62

2 SHEETS, 2 PAGES  
 SCALE: VERT. 1"=8' APRIL 1975  
 HORIZ. 1"=40'

PREPARED IN THE OFFICES OF  
 WYN - LOS ANGELES  
 519 W. MAIN ST., 12TH FLOOR, LOS ANGELES, CALIF.  
 W.S. 62  
 P. O. C. E. NO. 16,685

FOR LEGEND SEE PLAN NO. 5-1

NOTE

GRADES TO WHICH THIS IMPROVEMENT IS TO BE CONSTRUCTED ARE SHOWN ON PLANS AND PROFILE. GRADE POINTS FOR TOP OF CURBS, CENTER LINE OF STREETS, OR CENTER LINE OF ALLEYS ARE SHOWN BY CIRCLES AND PROFILES. AT ALL POINTS BETWEEN DESIGNATED POINTS THE GRADE SHALL BE ESTABLISHED TO AS TO CONFORM TO A STRAIGHT LINE DRAWN BETWEEN SAID DESIGNATED POINTS. ELEVATIONS ARE IN FEET ABOVE U.S.C. & G.S. SEA LEVEL DATUM OF 1929.

THESE PLANS AND THE DATA HEREON ARE HEREBY MADE A PART OF THE SPECIFICATIONS.

THE CONTRACTOR SHALL BE RESPONSIBLE FOR OBTAINING ALL NECESSARY PERMITS AND APPROVALS FROM THE SANITATION DISTRICTS AND THE COUNTY ENGINEER.

THE CONTRACTOR SHALL BE RESPONSIBLE FOR OBTAINING ALL NECESSARY PERMITS AND APPROVALS FROM THE SANITATION DISTRICTS AND THE COUNTY ENGINEER.

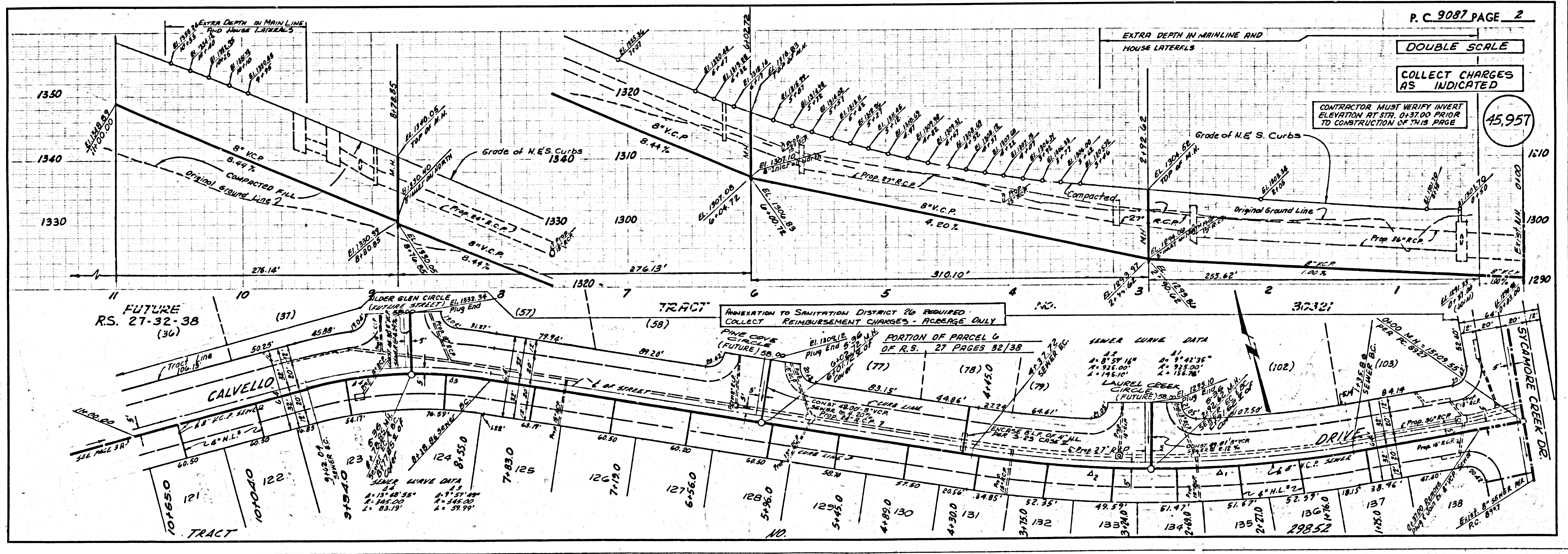
COUNTY OF LOS ANGELES, CALIFORNIA  
 DEPARTMENT OF COUNTY ENGINEER  
 J. D. PARKHURST, CHIEF ENGINEER

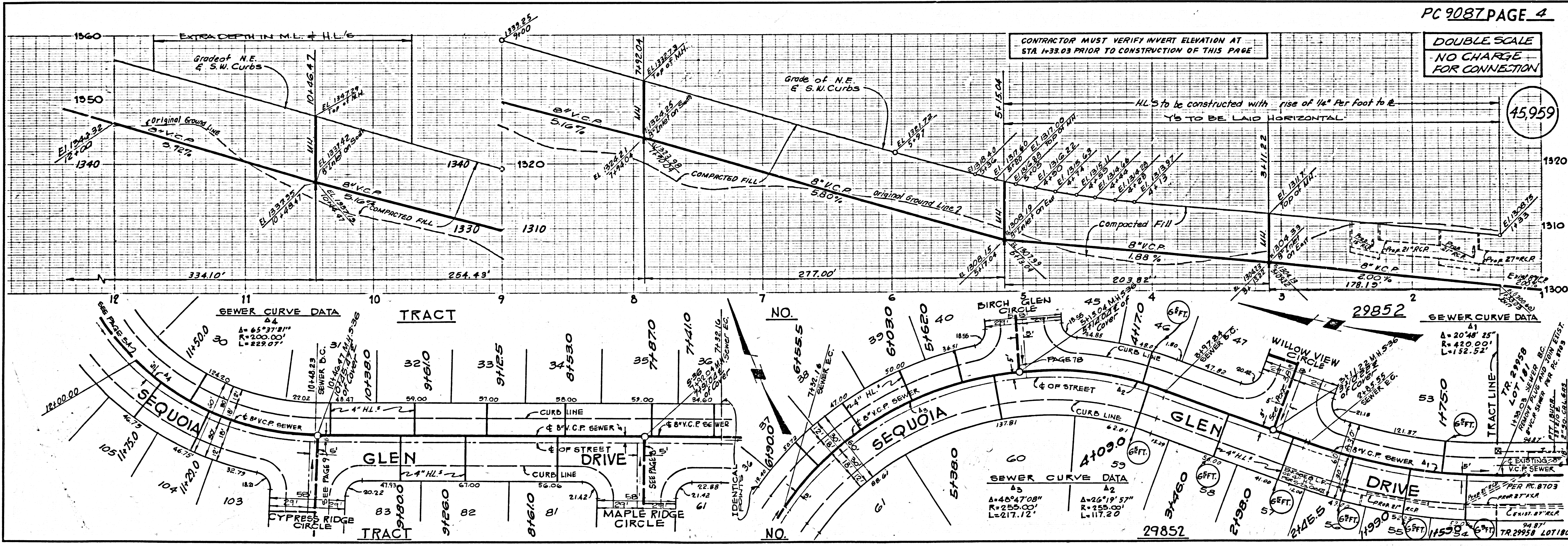
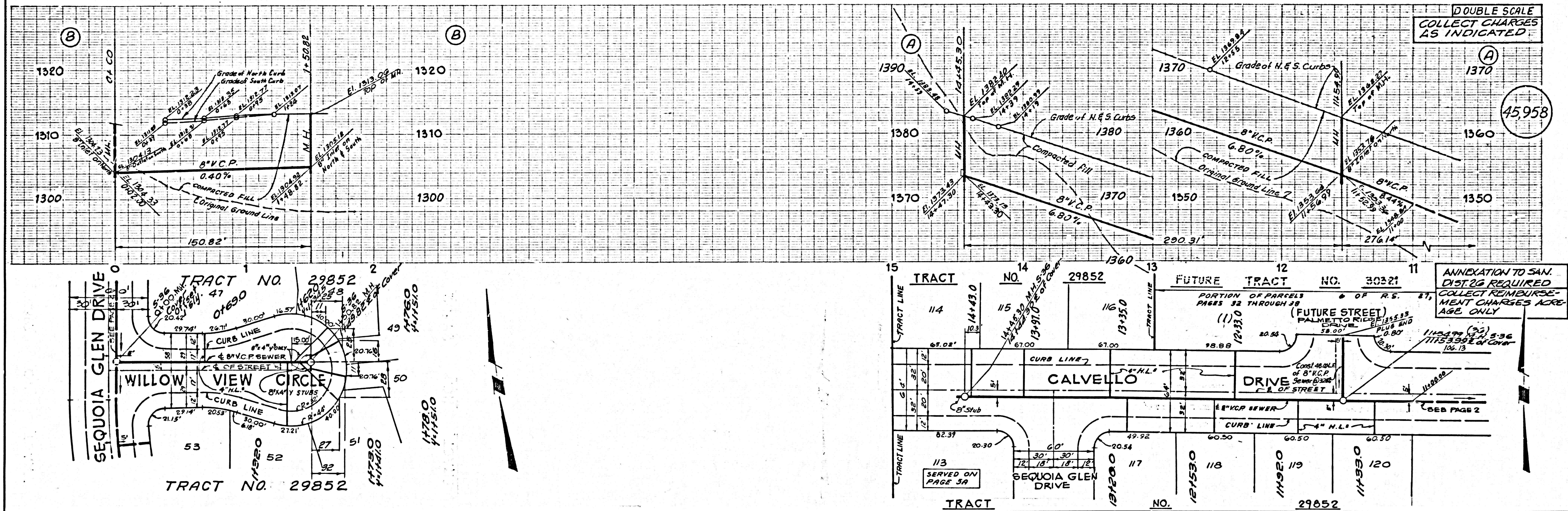
APPROVED BY: *[Signature]*  
 COUNTY ENGINEER (OVER)  
 10-26-76

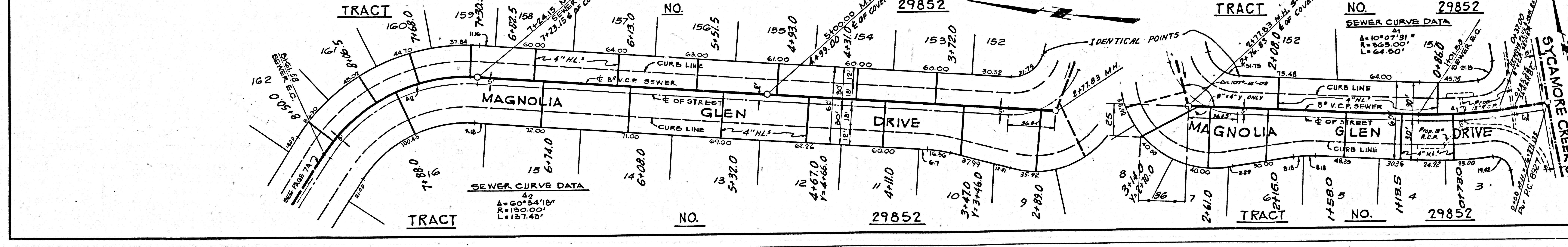
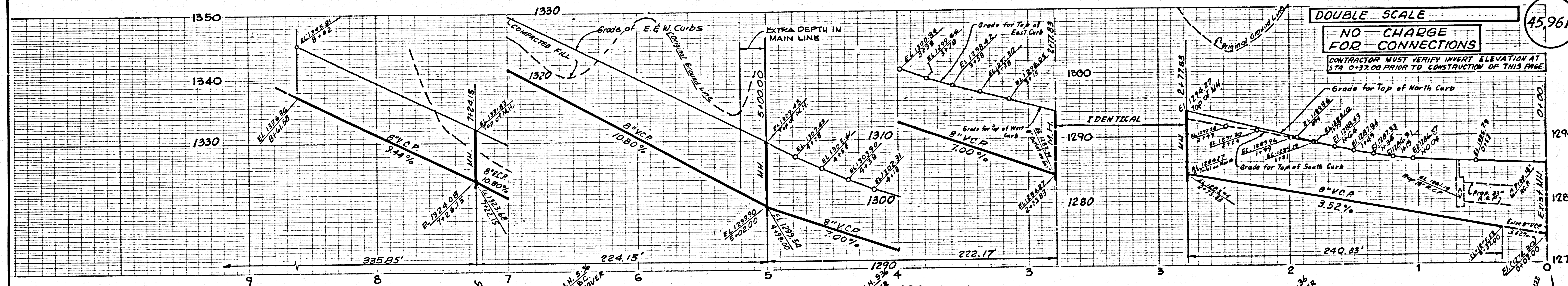
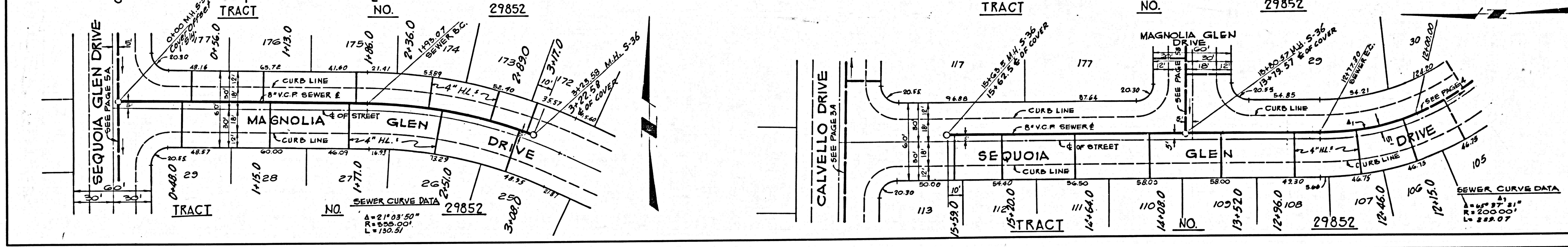
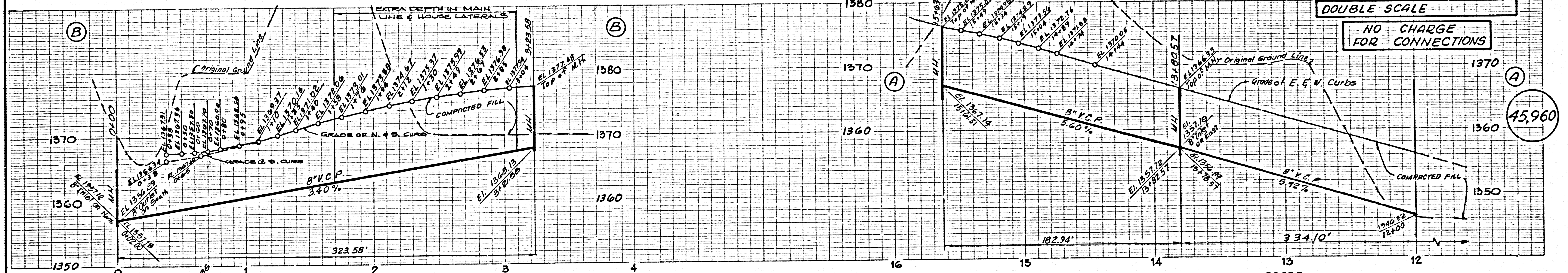
APPROVED BY: *[Signature]*  
 OFFICE ENGINEER

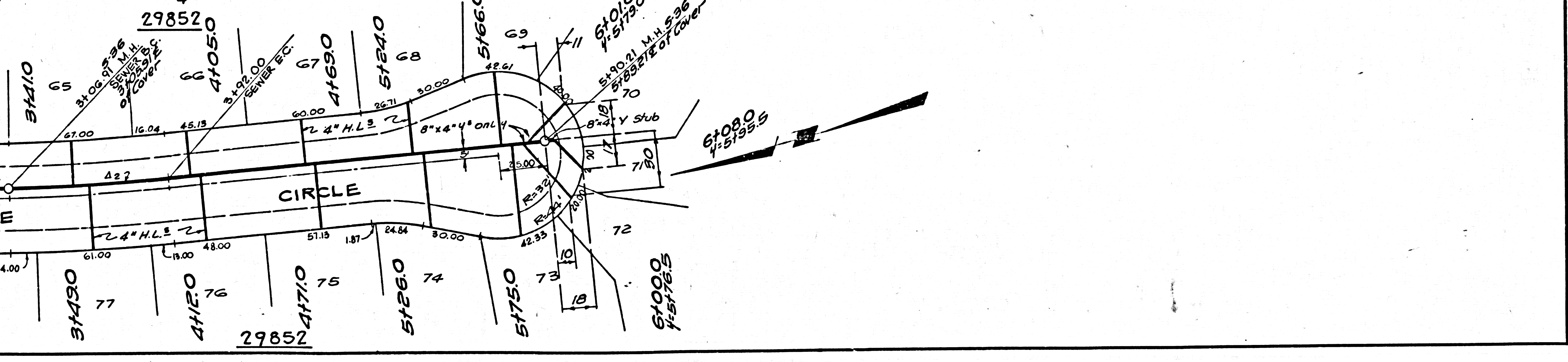
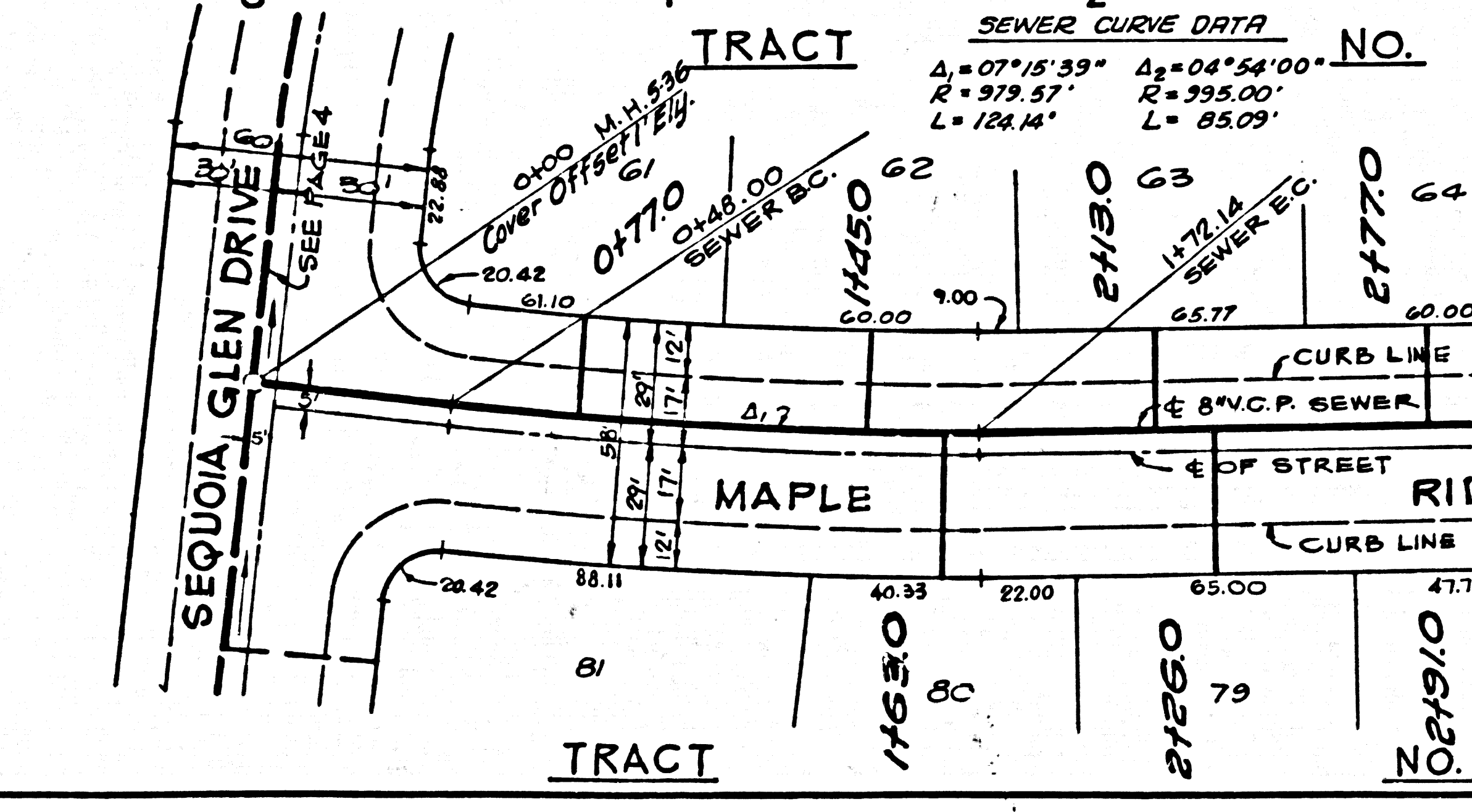
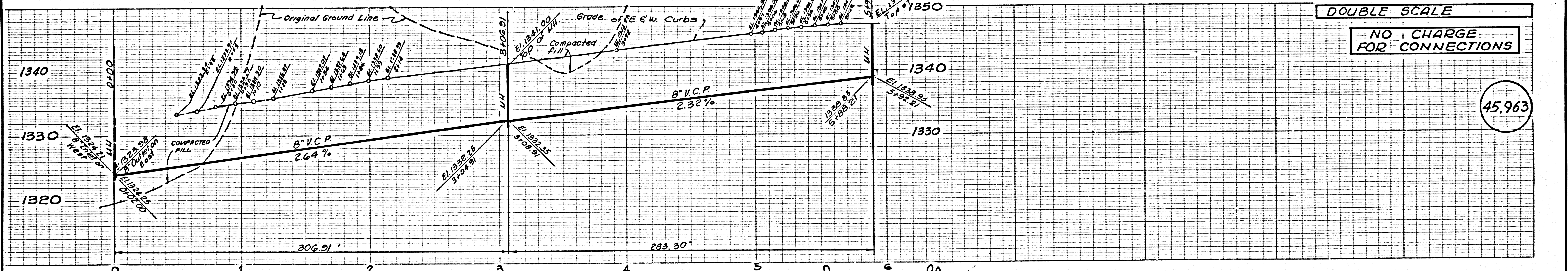
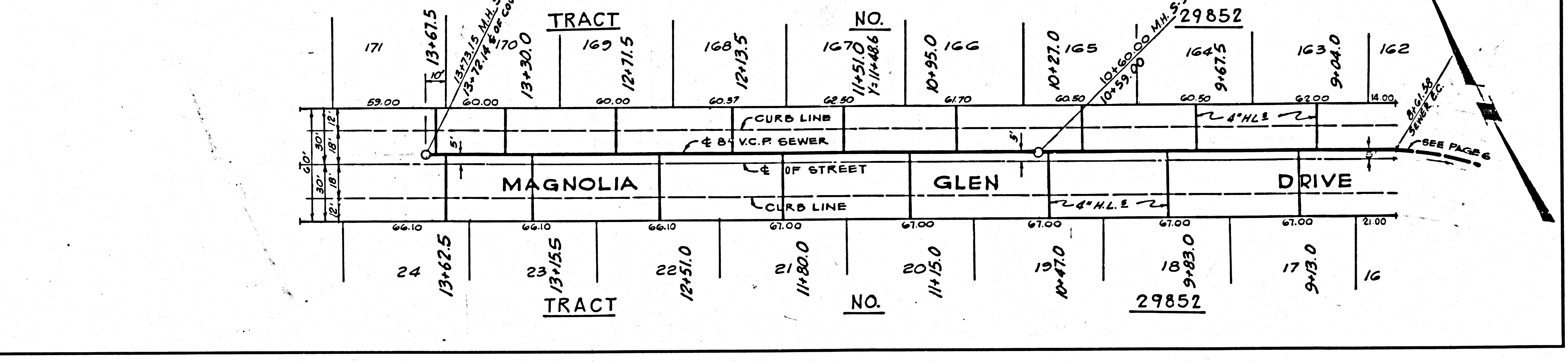
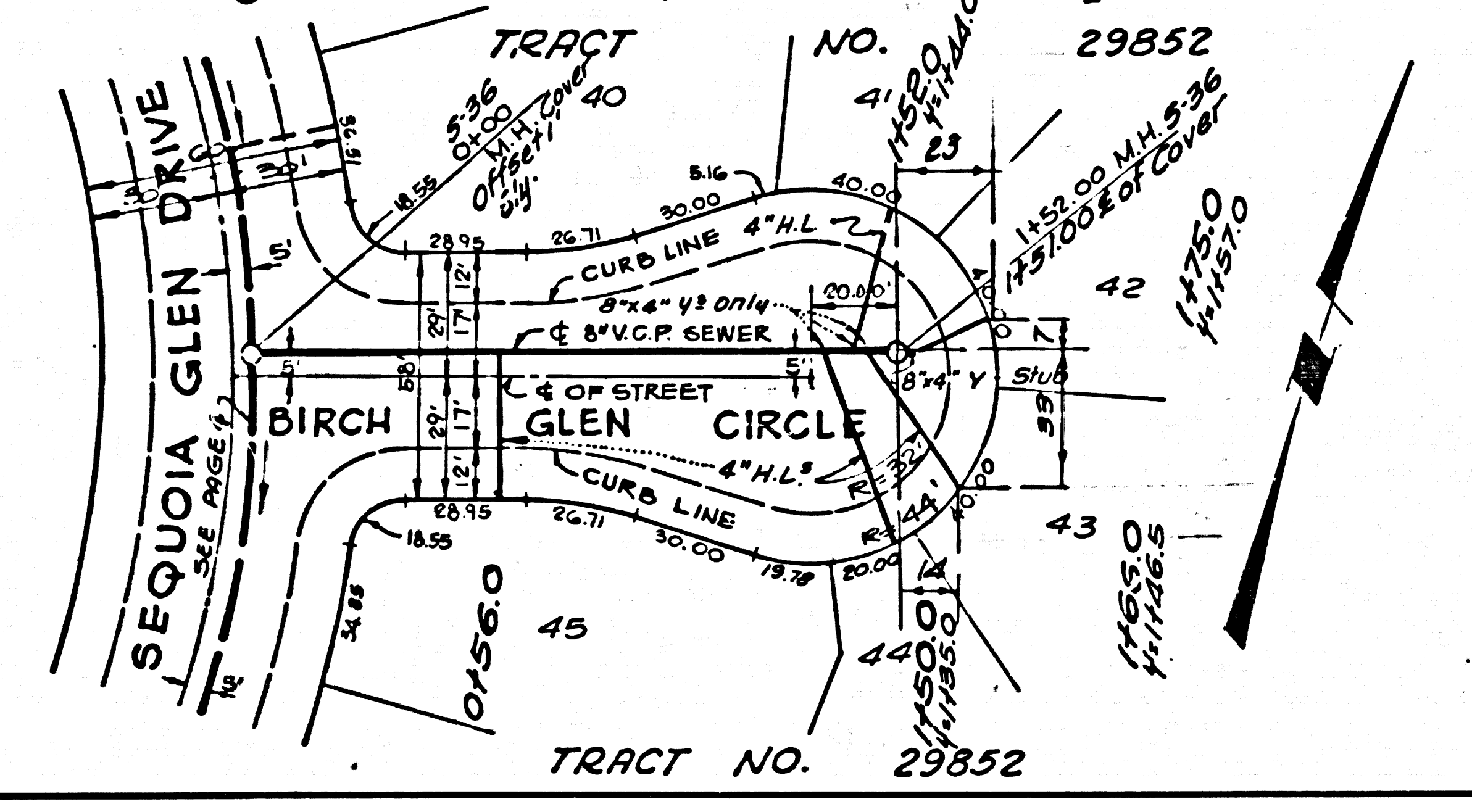
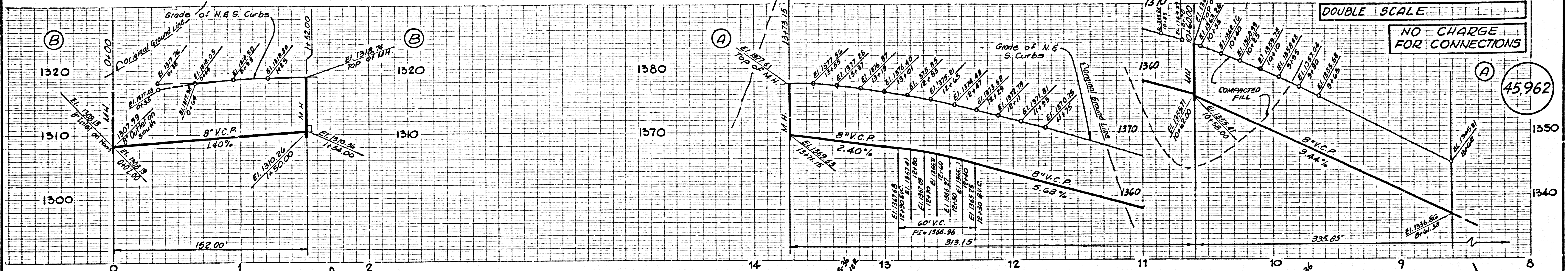
CHECKED BY: *[Signature]* 10-26-76  
 W.S. 62

J. N. 0250.02



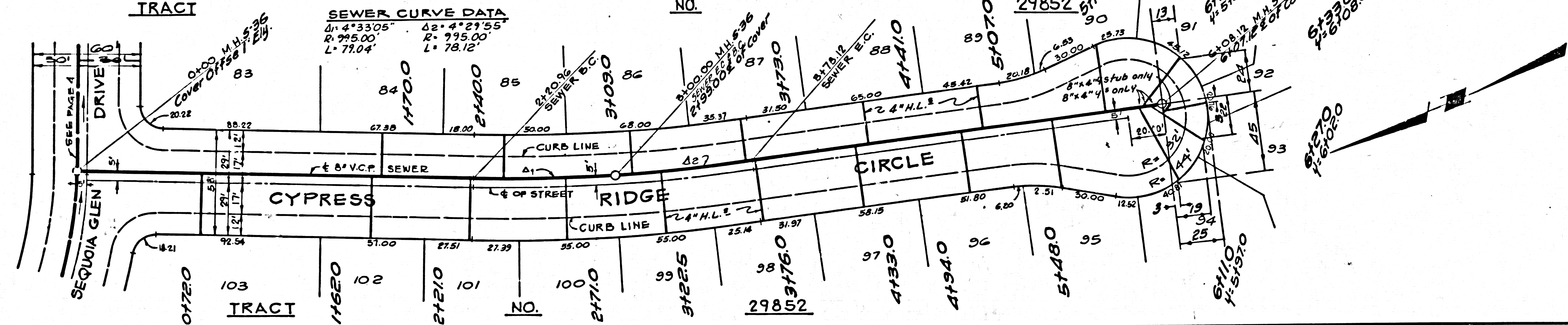
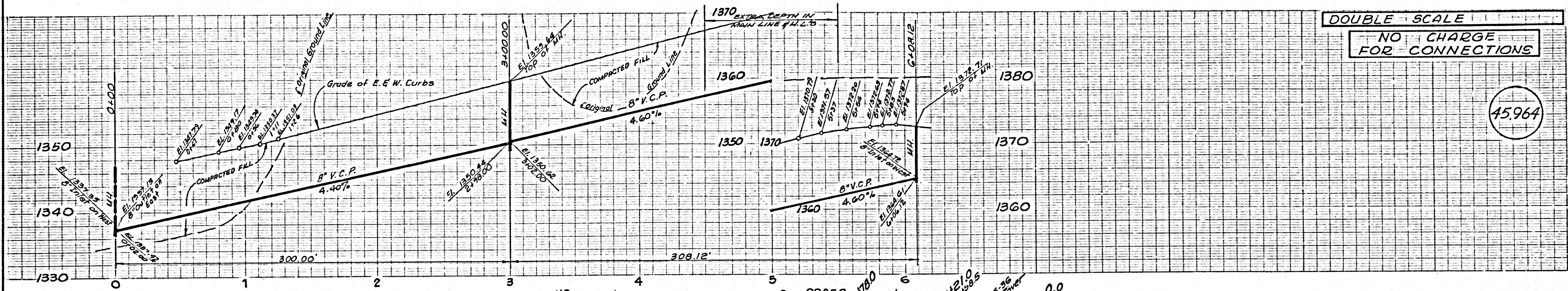






DOUBLE SCALE  
NO CHARGE  
FOR CONNECTIONS

45.964



SEWER CURVE DATA

Δ1 = 4°33'05"	Δ2 = 4°29'55"
R = 775.00'	R = 775.00'
L = 79.04'	L = 78.12'