

TO BE CONSTRUCTED IN
TRACT No. 31053

PRIVATE CONTRACT NO. 9091

W.S.39-54
 5 SHEETS, 9 PAGES

47741

SCALE: VERT. 1"=4'
 HORIZ. 1"=40'
 OCTOBER, 1978
 PREPARED IN THE OFFICES OF
 E.L. PEARSON & ASSOC.'S.

BY: *David W. ...*
 REG. C. E. No. 20228

THE FOLLOWING LATEST REVISED STANDARD PLANS ON FILE IN THE OFFICE OF THE COUNTY ENGINEER SHALL APPLY IN THE CONSTRUCTION OF THIS PROJECT:

LEGEND	5-1
MINIMUM PUBLIC SAFETY REQUIREMENTS	5-2
BRICK MANHOLE	5-3
STANDARD MANHOLE STOP	5-4
BEDDING FOR SEWER PIPE	5-5
CLADDING AND ENCASEMENT	5-6
WYE OR TEE SUPPORT	5-7
ALLOWABLE TRENCH WIDTHS	5-8
SOCKING MANHOLE FRAMES AND COVERS	5-9
NON-REINFORCED PRECAST CONCRETE MANHOLE	5-10

COUNTY OF LOS ANGELES, CALIFORNIA
 STEPHEN J. KOONCE, COUNTY ENGINEER JOHN D. PARKHURST, CHIEF ENGINEER
 APPROVED *Rita ...* APPROVED *Michael ...*
 SAN DIMAS REGIONAL ENGINEER SAN DIMAS OFFICE ENGINEER
 CHECKED *Thomas ...* DATE 10/26/78
 REG. C. E. No. 19156
 LA PUENTE BIDG. DIST. 2.00 I.N. 0358.02

DOUBLE SCALE

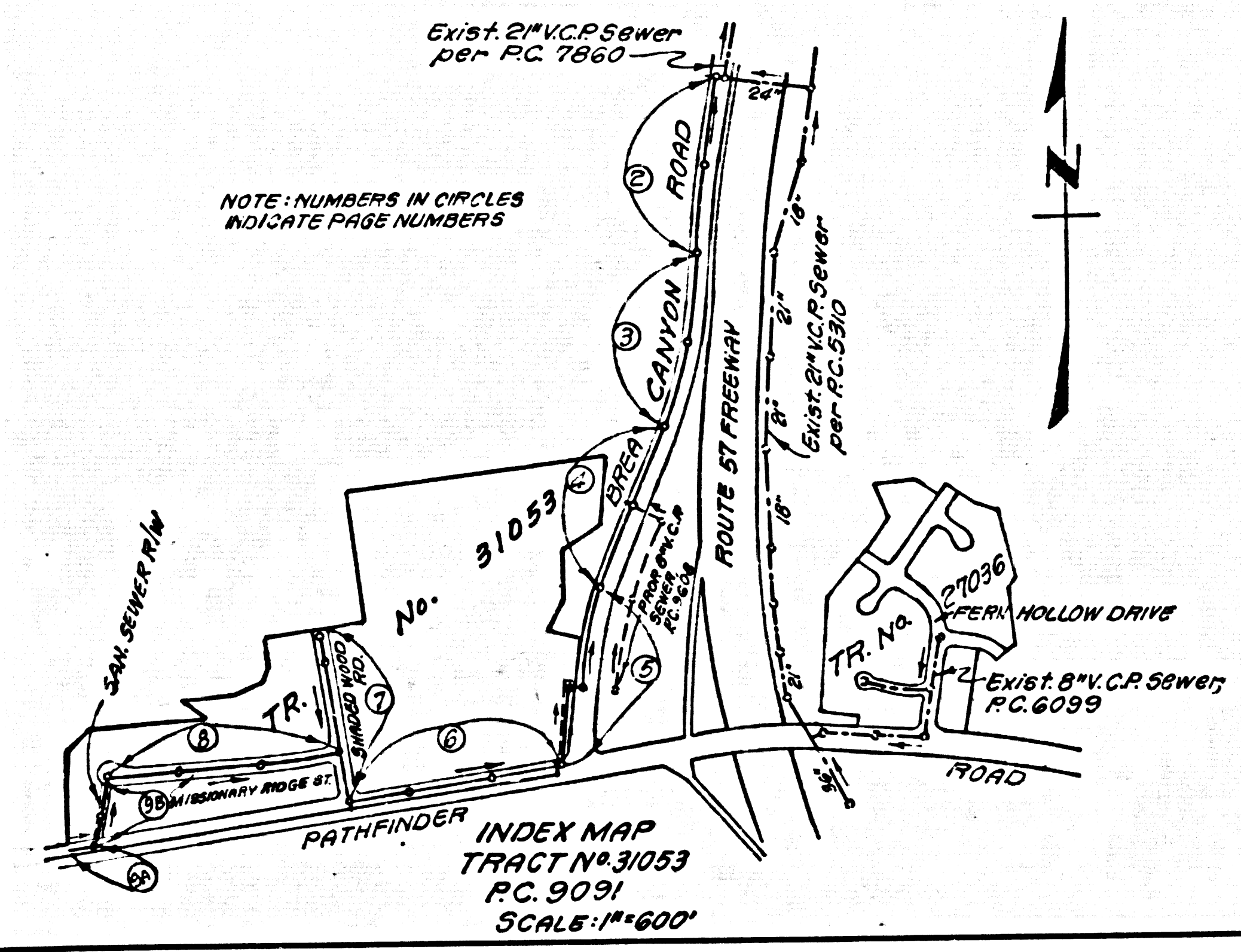
- GENERAL NOTES:**
- ELEVATIONS ARE IN FEET ABOVE U.S.C. & G.S. SEA LEVEL DATUM OF 1929.
 - NO REVISIONS SHALL BE MADE IN THESE PLANS WITHOUT THE APPROVAL OF THE COUNTY ENGINEER.
 - NO REPRESENTATIVE OF THE COUNTY ENGINEER WILL SURVEY OR LAY OUT ANY PORTION OF THE WORK.
 - GRADES TO WHICH THIS IMPROVEMENT IS TO BE CONSTRUCTED ARE SHOWN ON PLANS AND PROFILES. GRADE POINTS FOR TOP OF CURB, CENTER LINE OF STREETS, OR CENTER LINE OF ALLEYS ARE SHOWN BY CIRCLES ON PLANS AT ALL POINTS BETWEEN DESIGNATED POINTS THE GRADE SHALL BE ESTABLISHED SO AS TO CONFORM TO A STRAIGHT LINE DRAWN BETWEEN SAID DESIGNATED POINTS.
 - THE PRIVATE ENGINEER SHALL FURNISH THE COUNTY ENGINEER WITH GRADE SHEETS AND STATIONING FOR ALL HOUSE LATERALS AND "Y" OR "T" BRANCHES AND SHALL PROVIDE STAKES FOR THEM AT THEIR PROPER LOCATIONS WITH STATIONING PLAINLY MARKED. ALL HOUSE LATERALS SHALL BE CONSTRUCTED IN A STRAIGHT ALIGNMENT AT RIGHT ANGLES FROM THE MAIN LINE SEWER EXCEPT AS SHOWN ON THE PLANS. HOUSE LATERALS FROM CURBSIDES SHALL NOT HAVE AN ANGLE OF LESS THAN 45° WITH THE MAIN LINE SEWER. ANY CHANGE IN ALIGNMENT SHALL BE REQUESTED IN WRITING BY THE PRIVATE ENGINEER.
 - THE PRIVATE ENGINEER SHALL FURNISH THE HOUSE LATERAL DEPTH AT THE PROPERTY LINE BELOW THE TOP OF CURB ELEVATION FOR EACH HOUSE LATERAL ON THE GRADE SHEET.
 - BEFORE WORK CAN BE STARTED, THE CONTRACTOR MUST OBTAIN A PERMIT TO EXCAVATE IN COUNTY STREETS FROM THE L.A. COUNTY ROAD DEPT., DISTRICT OFFICE NO. 7, AND PAY A FEE TO THE COUNTY ENGINEER, 501 E. BOWLING AVE., SAN DIMAS REGIONAL OFFICE, TO COVER THE COST OF CONSTRUCTION INSPECTION AND RECORD PLANS.
 - IF WORK IS TO BE DONE IN A STATE HIGHWAY, A PERMIT MUST BE OBTAINED FROM THE STATE OF CALIFORNIA, DIVISION OF HIGHWAYS, 138 SOUTH SPRING STREET, LOS ANGELES, CALIFORNIA.
 - APPROVAL OF THIS PLAN BY THE COUNTY OF LOS ANGELES DOES NOT CONSTITUTE A REPRESENTATION AS TO THE ACCURACY OF THE LOCATION OF OR THE EXISTENCE OR NON-EXISTENCE OF ANY UNDERGROUND UTILITY PIPE, OR STRUCTURE WITHIN THE LIMITS OF THE PROJECT. THIS NOTE APPLIES TO ALL PAGES.
 - REFER TO SECTION 7-18.61 OF THE STANDARD SPECIFICATIONS, REGARDING SAFETY ORDERS.
 - PRIOR TO RESUMPTION OF THE PROJECT, THE CONTRACTOR SHALL OBTAIN A PERMIT FROM THE COUNTY ENGINEER, THE COUNTY ENGINEER'S OFFICE, TO RECONSTRUCT THE STATE OF CALIFORNIA, DIVISION OF HIGHWAYS, DISTRICT OFFICE NO. 7, AND SHALL FILE A CERTIFICATE OF WORKERS COMPENSATION INSURANCE WITH THE COUNTY ENGINEER.

- CONSTRUCTION NOTES:**
- WORK SHALL BE CONSTRUCTED ACCORDING TO THE STANDARD SPECIFICATIONS FOR PUBLIC WORKS CONSTRUCTION (1976 EDITION) WITH 1978 SUPPLEMENTS AND COUNTY ENGINEER SPECIAL PROVISIONS FOR THE CONSTRUCTION OF SANITARY SEWERS DATED SEPTEMBER 21, 1978, AND SHALL BE PROSECUTED ONLY IN THE PRESENCE OF THE COUNTY ENGINEER.
 - THE CONTRACTOR SHALL NOTIFY THE ENVIRONMENTAL DEVELOPMENT DIVISION (P. 208-76-7889), AT LEAST TWENTY-FOUR HOURS BEFORE STARTING ANY WORK UNDER THIS CONTRACT.
 - HOUSE LATERALS TO BE CONSTRUCTED WITH WYES AT PROPERTY LINE 4 FEET BELOW CURB GRADE EXCEPT AS NOTED.
 - WYE OR TEE BRANCHES MAY BE USED FOR CONNECTIONS TO MAINLINE SEWERS EXCEPT AS NOTED.
 - ALL STRUCTURES SHALL BE EITHER BRICK MANHOLES PER S-3 OR PRECAST CONCRETE MANHOLES PER S-36, EXCEPT AS NOTED.
 - PROVIDE STAKES ON THE PROPERTY LINE OR PROPERTY LINES PRODUCED AT RIGHT ANGLES TO THE SEWER LINE AT THE CENTER LINE OF EACH MANHOLE.
 - MANHOLE TOPS IN UNIMPROVED RIGHTS OF WAY TO BE SIX INCHES ABOVE FINISHED GRADE.
 - VERIFIED CLAY PIPE JOINTS SHALL BE TYPE "B", "F", OR "G" PER STANDARD SPECIFICATIONS SECTION 300-2.
 - IF A POWER POLE IS WITHIN THREE FEET OF THE SEWER, THE SEWER SHALL BE ENCASED, PER S-23, CASE II, TWO FEET ON EACH SIDE FROM THE POINT OF INTERFERENCE.
 - IF DURING THE COURSE OF CONSTRUCTION IT IS DETERMINED THAT THERE IS LESS THAN FOUR FEET OF COVER OVER THE TOP OF A MAIN LINE OR HOUSE LATERAL V.C.P. SEWER WHICH IS NOT INDICATED ON THE PLANS, THE PIPE SHALL BE ENCASED PER S-23, CASE II UNLESS OTHERWISE APPROVED BY THE COUNTY ENGINEER.
 - ALL JOINTS BETWEEN CLAY PIPE AND VERIFIED CLAY PIPE SHALL BE MADE WITH A RUBBER SLEEVE JOINT, TYPE "C" OR "B", (WITH BRUSHING IF NECESSARY) PER STANDARD SPECIFICATIONS, SECTION 300-2.
 - SEWERS TO BE TESTED FOR LEAKAGE PER SECTION 306-1.6 OF THE STANDARD SPECIFICATIONS AND SPECIAL PROVISIONS.
 - REINFORCE ALL TRENCHES WITHIN PAVED AREAS TO MEET L.A. COUNTY ROAD DEPT. OR CALIFORNIA STATE HIGHWAY REQUIREMENTS IN ACCORDANCE WITH PERMITS.
 - FULL COMPLIANCE WITH SECTION 306-1.8 OF THE SPECIAL PROVISIONS WILL BE REQUIRED FOR BACKFILL IN SHEETS. CERTIFICATION OF BACKFILL COMPACTION AND SAND FORTWALMETS BY A QUALIFIED, REGISTERED TESTING LABORATORY SHALL BE PROVIDED BY THE PERMITTEE PRIOR TO THE ISSUANCE OF A CERTIFICATE OF PARTIAL ACCEPTANCE.
 - SPECIAL BACKFILL IN DESIGNATED AREAS:
 A. BACKFILL FRENCH AND REPLACE STAKES WITHIN THE PROJECT AREA TO ACHIEVE THE NATURAL OR FINISHED GRADES.
 B. BACKFILL SHOULD BE THE SPECIFIC TYPE APPROVED FOR THIS PROJECT BY THE BUILDING AND SAFETY DIVISION.
 C. ALL BACKFILL AND SAND FORTWALMETS SHALL BE TESTED PER SECTION 306-1.8 OF THE STANDARD SPECIFICATIONS AND SPECIAL PROVISIONS. FULL COMPLIANCE WITH SECTION 306-1.8 OF THE SPECIAL PROVISIONS WILL BE REQUIRED FOR BACKFILL IN SHEETS. CERTIFICATION OF BACKFILL COMPACTION AND SAND FORTWALMETS BY A QUALIFIED, REGISTERED TESTING LABORATORY SHALL BE PROVIDED BY THE PERMITTEE PRIOR TO THE ISSUANCE OF A CERTIFICATE OF PARTIAL ACCEPTANCE.

B.M. CG 3932 ELEV. 856.318
 L+39.1 FT. W. B.C.R. 36 FT. N+51 FT.
 & C/L INT. FERN HOLLOW DR. &
 PATHFINDER RD.
 OTTERBEIN QUAD. 19 75

PAGE	REVISIONS DESCRIPTION	DATE
1	ADDED REVISION BLOCK	
1	REVISED UNIT LINE TO SHOW NEW TR. BOUNDARY AND NEW STREETS	
1	CHANGED "FORWING ROAD" TO "BREA CANYON ROAD"	
1	CHANGED "4 SITS, 7 RANGES" TO "5 SITS, 8 RANGES"	
5	REV. PLAN FROM STA. 251.50 TO STA. 252.50	1-9-79
2 TO 6	CHANGED "FORWING ROAD" TO "BREA CANYON ROAD"	
6	REV. PLAN FROM STA. 7+54.00 FORWARD	1-9-79
7	REVISED PLAN & PROFILE	
8	REV. PROFILE STA. 0+33.23 TO STRAIGHT	1-9-79
8 & 9	NEW PAGES	

APPROVED BY:
Ralph David ... 16883 5/24/79
 CHIEF OF THE COUNTY ENGINEER - R.C.E. DATE

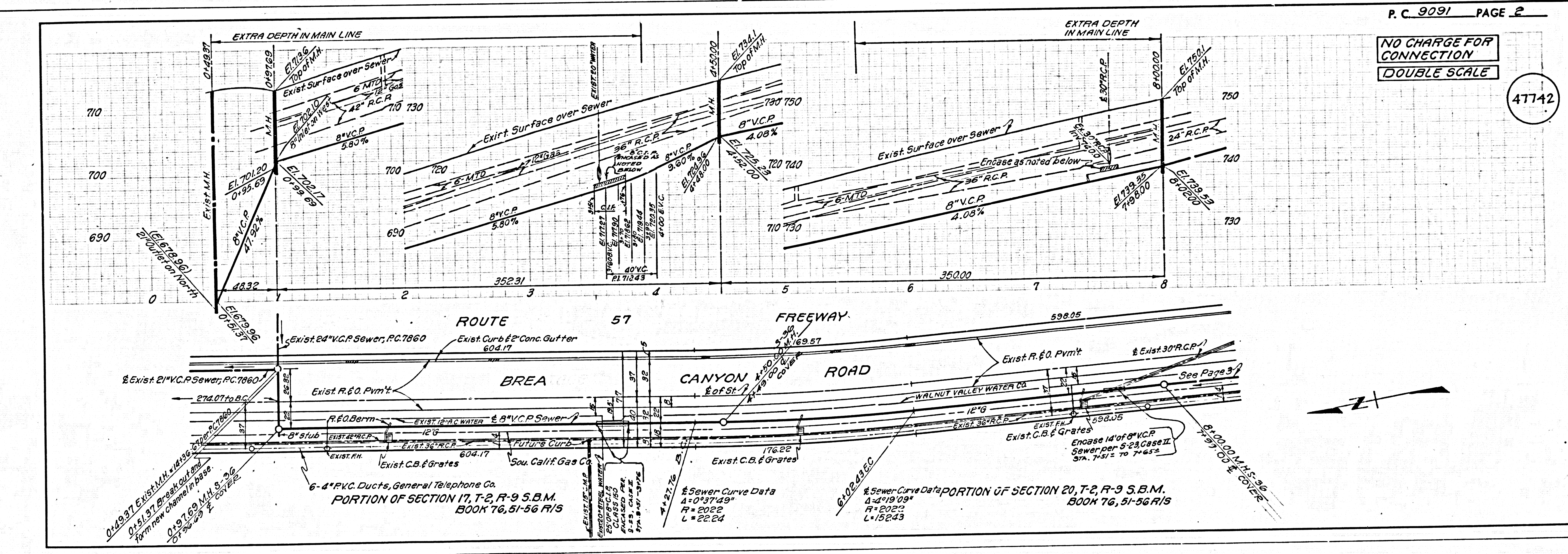


NO CONVICTION FOR THE PROHIBITION OF HAZARDOUS WASTES SHALL BE MADE TO ANY PERSON OR ENTITY UNLESS SUCH PERSON OR ENTITY HAS BEEN ADVISED BY THE SANITATION DISTRICTS FOR SAID CONVICTION.

COUNTY STATIONING DISTRICTS SHALL BE MODIFIED 24 HOURS PRIOR TO THE STARTING OF ANY WORK. INSPECTION CAN BE MADE AT ANY TIME.

ACCEPTANCE OF THE PROJECT:
David W. ...
 R.C.E. 20228

THE EXISTENCE AND LOCATION OF ANY UNDERGROUND UTILITY PIPES OR STRUCTURES SHOWN ON THESE PLANS HAS BEEN OBTAINED BY SEARCH OF THE PUBLIC RECORDS TO THE BEST OF MY KNOWLEDGE THERE ARE NO EXISTING UTILITIES EXCEPT AS SHOWN ON THESE PLANS. THIS CONTRACTOR IS REQUIRED TO TAKE DUE PRECAUTIONARY MEASURES TO PROTECT THE UTILITY LINES SHOWN AND ANY OTHER LINES NOT OF RECORD OR NOT SHOWN ON THESE PLANS.

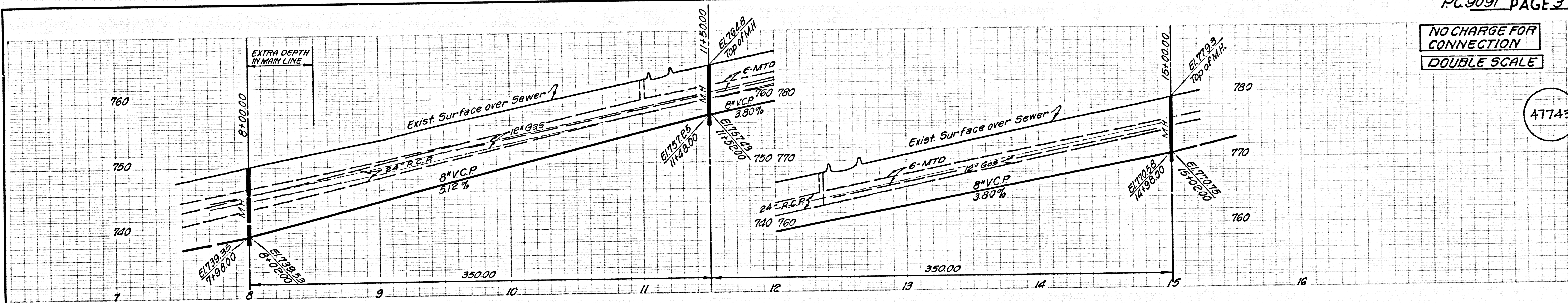


NO CHARGE FOR CONNECTION
 DOUBLE SCALE

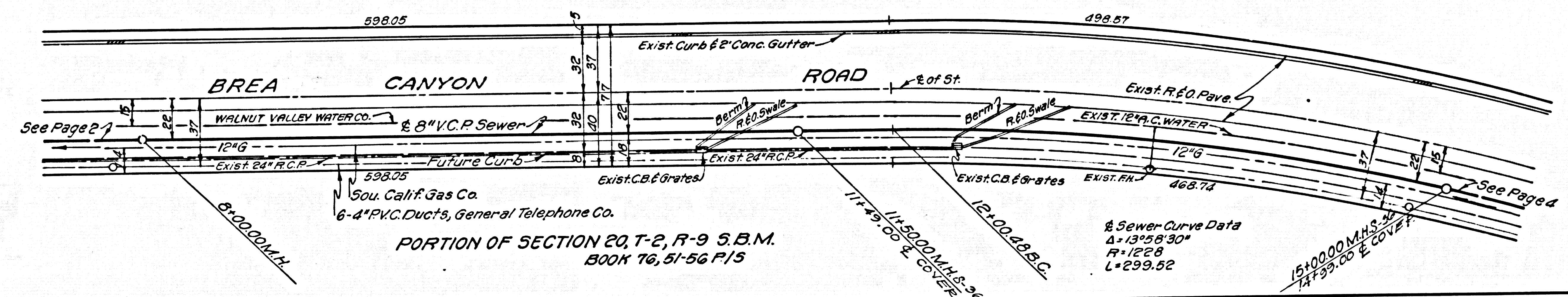
47742

NO CHARGE FOR CONNECTION
DOUBLE SCALE

47743



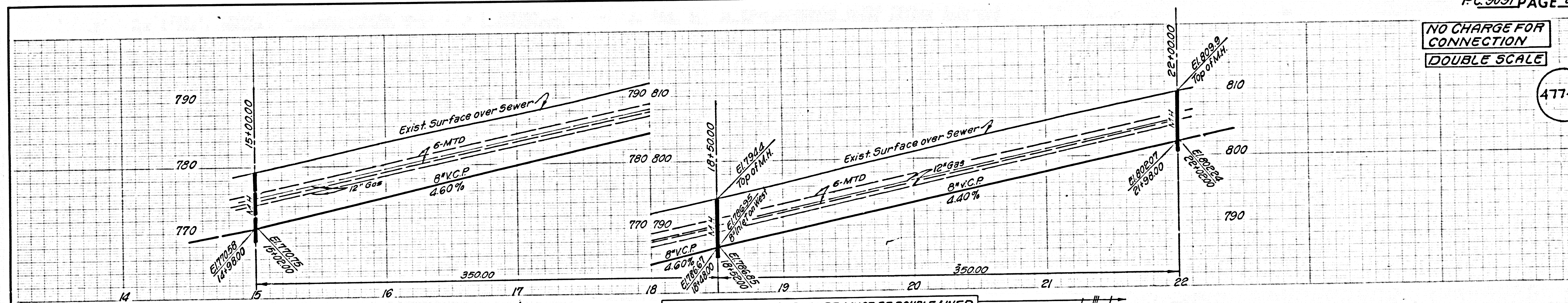
ROUTE 57 FREEWAY



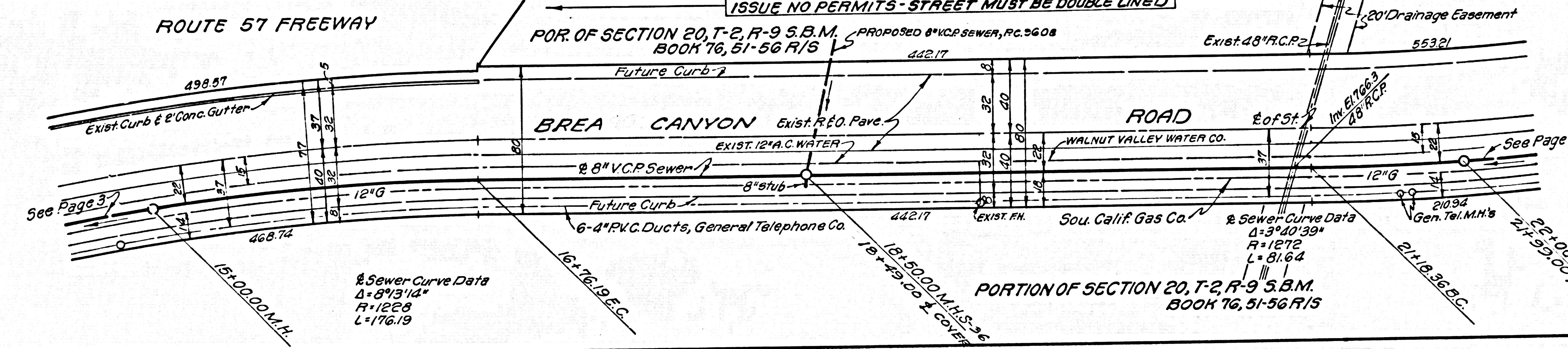
PORTION OF SECTION 20, T-2, R-9 S.B.M.
BOOK 76, 51-56 P/15

NO CHARGE FOR CONNECTION
DOUBLE SCALE

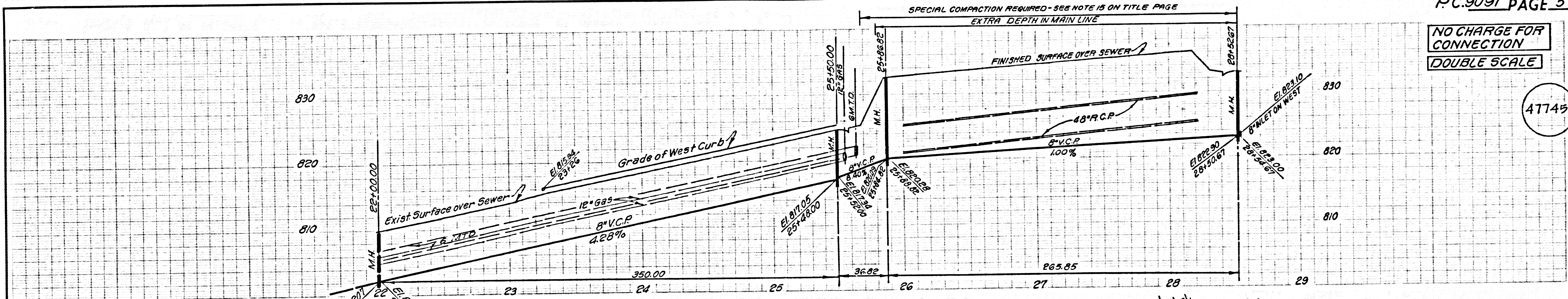
47744



ROUTE 57 FREEWAY

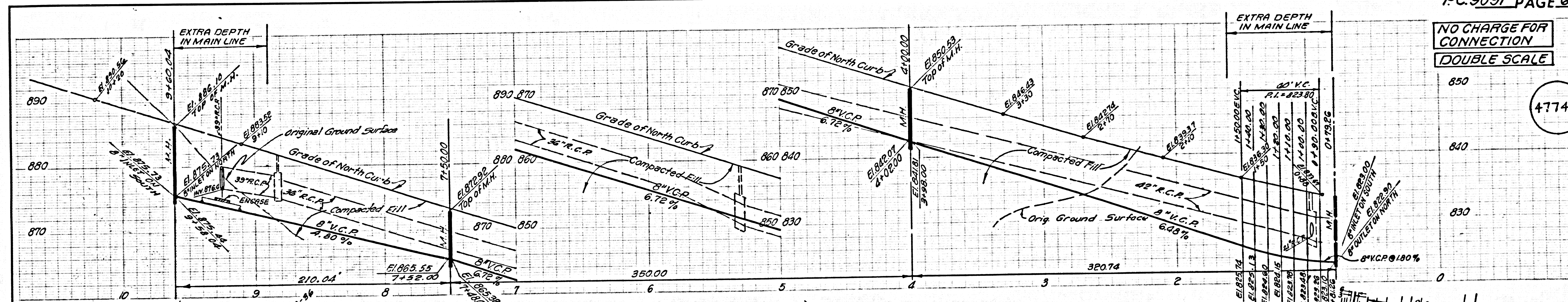
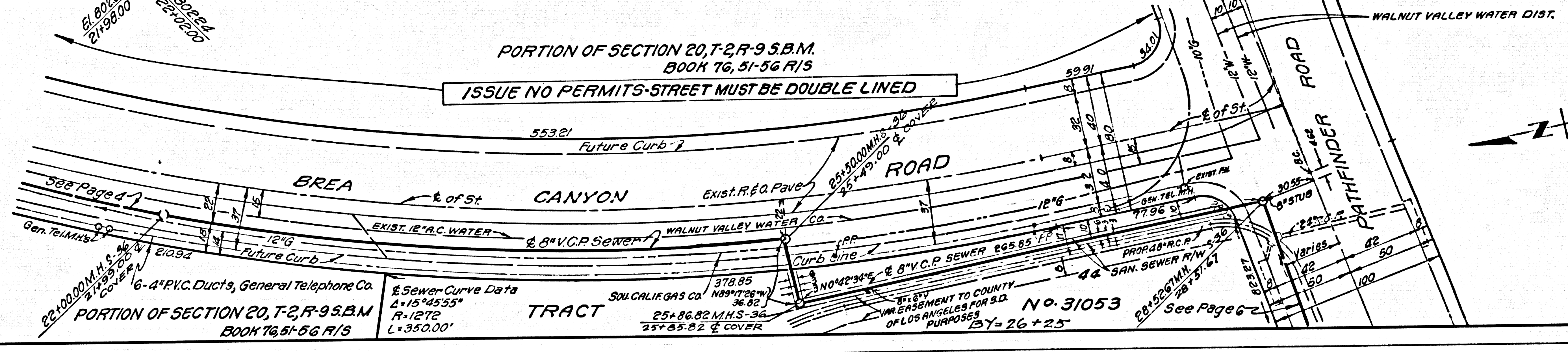


PORTION OF SECTION 20, T-2, R-9 S.B.M.
BOOK 76, 51-56 P/15



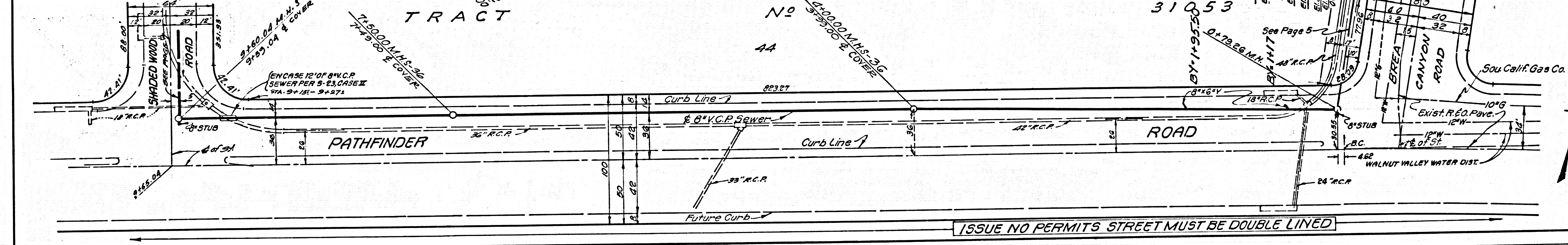
NO CHARGE FOR CONNECTION
DOUBLE SCALE

4774



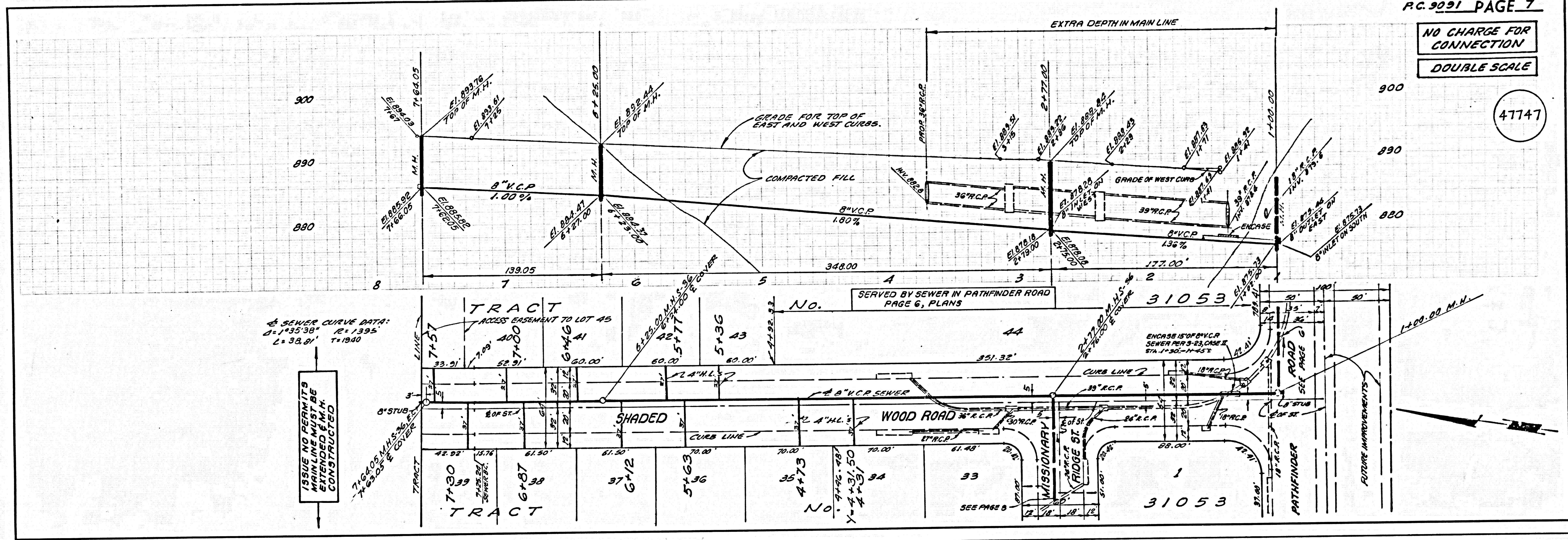
NO CHARGE FOR CONNECTION
DOUBLE SCALE

4774



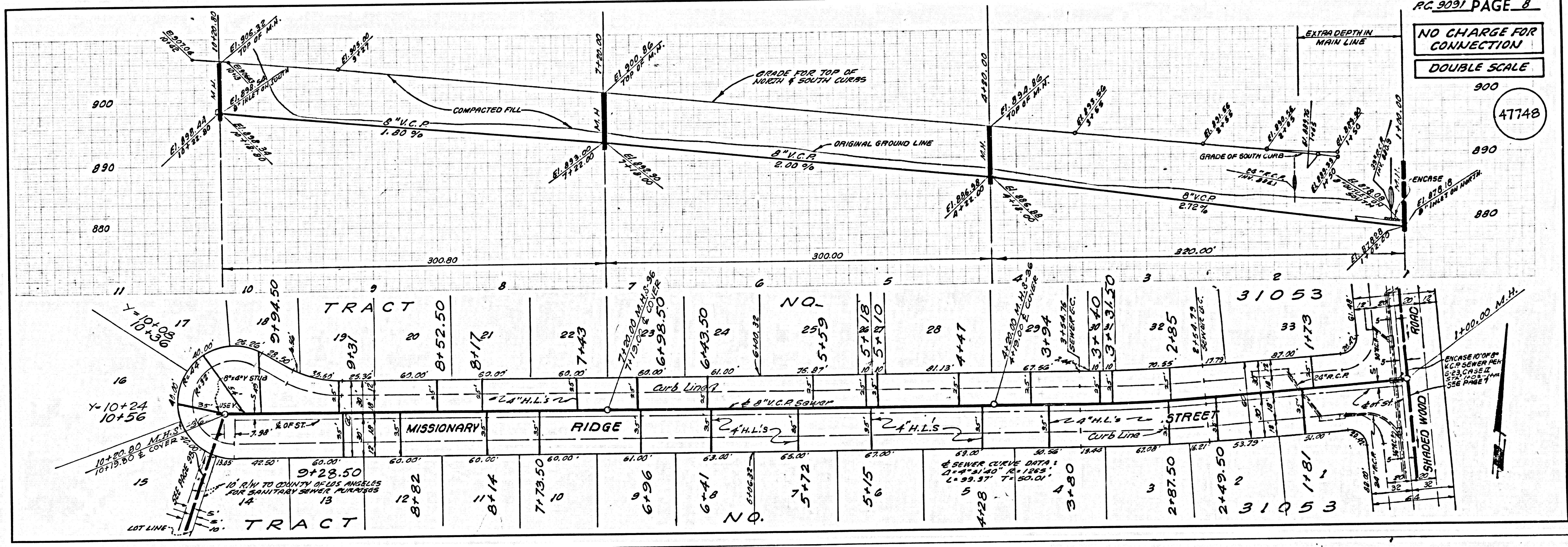
NO CHARGE FOR CONNECTION
DOUBLE SCALE

47747



NO CHARGE FOR CONNECTION
DOUBLE SCALE

47748



NO CHARGE FOR CONNECTION

DOUBLE SCALE

47749

