

B.M. DLG34 ELEV. 1259.41G
 L & T. AT SOUTHEAST CORNER CONCRETE PORCH OF
 NEWHALL MOOSE LODGE NO. 1989 140 FT. NORTH OF E
 OF LYONS AVE. & 90 FT. EAST OF E OF ARCADIA STREET
 NEWHALL QUAD. 1972

DOUBLE SCALE

GENERAL NOTES:

1. REVISIONS ARE IN PINK INK.
2. NO REVISIONS SHALL BE MADE IN THESE PLANS WITHOUT THE APPROVAL OF THE COUNTY ENGINEER.
3. NO REPRESENTATIVE OF THE COUNTY ENGINEER WILL SURVEY OR LAY OUT ANY PORTION OF THE WORK.
4. GRADES TO WHICH THIS IMPROVEMENT IS TO BE CONSTRUCTED ARE SHOWN ON PLANS AND PROFILES. GRADE POINTS FOR TOP OF CURBS, CENTER LINE OF STREETS, OR CENTER LINE OF ALLEYS ARE SHOWN BY CIRCLES ON PROFILES AT ALL POINTS BETWEEN DESIGNATED POINTS. THE GRADE SHALL BE ESTABLISHED SO AS TO CONFORM TO A STRAIGHT LINE DRAWN BETWEEN SAID DESIGNATED POINTS.
5. THE PRIVATE ENGINEER SHALL FURNISH THE COUNTY ENGINEER WITH GRADE SHEETS AND STATIONING FOR ALL HOUSE LATERALS AND "T" OR "Y" BRANCHES AND SHALL PROVIDE STAKES FOR THEM AT THEIR PROPER LOCATIONS WITH STATIONING PLAINLY MARKED. ALL HOUSE LATERALS SHALL BE CONSTRUCTED IN A STRAIGHT ALIGNMENT AT RIGHT ANGLES FROM THE MAIN LINE SEWER EXCEPT AS SHOWN ON THE PLANS. HOUSE LATERALS FROM CHIMNEYS SHALL NOT HAVE AN ANGLE OF LESS THAN 45° WITH THE MAIN LINE SEWER. ANY CHANGE IN ALIGNMENT SHALL BE REQUESTED IN WRITING BY THE PRIVATE ENGINEER.
6. THE PRIVATE ENGINEER SHALL FURNISH THE HOUSE LATERAL DEPTH AT THE PROPERTY LINE BELOW THE TOP OF CURB ELEVATION FOR EACH HOUSE LATERAL ON THE GRADE SHEET.
7. BEFORE WORK CAN BE STARTED, THE CONTRACTOR MUST PAY A FEE TO THE COUNTY ENGINEER'S R.M. 10000 COUNTY ENGINEERING BLDG. JOB NO. ENG. ET. L.A. OF THE SANTA CLARITA VALLEY REGIONAL OFFICE, TO COVER THE COST OF CONSTRUCTION INSPECTION AND REVISION PLANS.
8. IF WORK IS TO BE DONE IN A STATE HIGHWAY, A PERMIT MUST BE OBTAINED FROM THE STATE OF CALIFORNIA, DIVISION OF HIGHWAYS, 120 SOUTH SPRING STREET, LOS ANGELES, CALIFORNIA.
9. APPROVAL OF THIS PLAN BY THE COUNTY OF LOS ANGELES DOES NOT CONSTITUTE A REPRESENTATION AS TO THE ACCURACY OF THE LOCATION OF OR THE EXISTENCE OR NON-EXISTENCE OF ANY UNDERGROUND UTILITY PIPE, OR STRUCTURE WITHIN THE LIMITS OF THIS PROJECT. THIS NOTE APPLIES TO ALL PAGES.
10. REFER TO SECTION 7-18.4.1 OF THE STANDARD SPECIFICATIONS REGARDING SAFETY ORDERS.
11. PRIOR TO THE ISSUANCE OF THE REQUIRED SEWER CONSTRUCTION PERMIT BY THE COUNTY ENGINEER, THE CONTRACTOR SHALL OBTAIN A PERMIT TO EXCAVATE FROM THE STATE OF CALIFORNIA, DIVISION OF INDUSTRIAL SAFETY.

PROFILE, ALIGNMENT AND GRADE OF
SANITARY SEWERS PAGE 1
 CONSTRUCTED IN EASEMENT FOR
 RE-ALIGNMENT OF HART H.S. SEWER

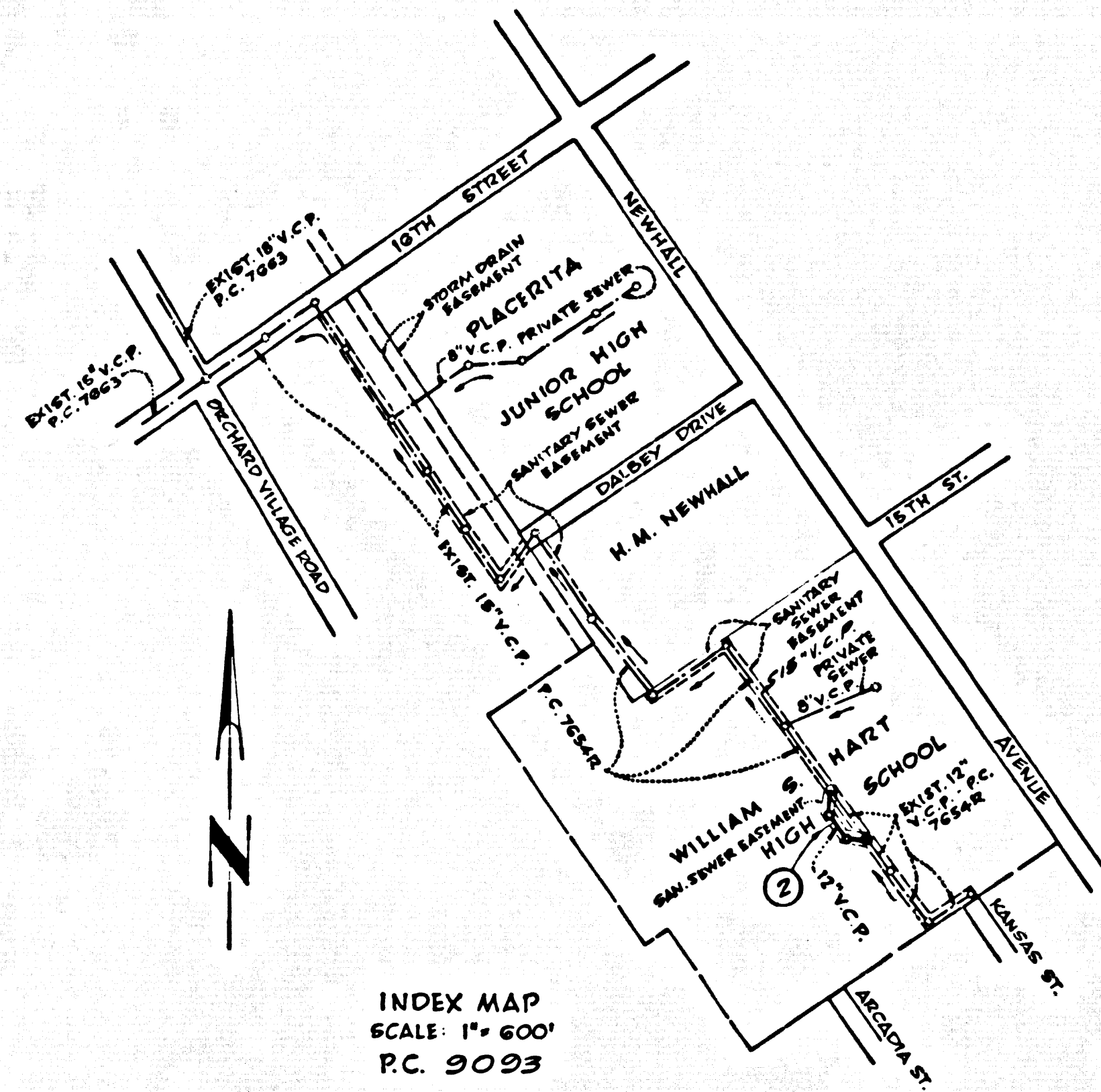
PRIVATE CONTRACT NO. 9093

INDEX 249 S 125
 W.S. 62

1 SHEET, 2 PAGES

SCALE: VERT. 1" = 4'
 HORIZ. 1" = 40'
 NOVEMBER, 1974
 PREPARED IN THE OFFICES OF
 HOPEN, HEDLUND & DARBY, INC.

BY: *Harold H. Hedlund*
 REG. C. E. No. 14975



INDEX MAP
 SCALE: 1" = 600'
 P.C. 9093

NOTE:
 NUMBERS IN CIRCLES
 INDICATE SHEET NUMBER.

NO CONNECTION FOR THE DISPOSAL OF INDUSTRIAL WASTES
 SHALL BE MADE TO SEWERS SHOWN ON THESE DRAWINGS UNTIL
 A PERMIT FOR INDUSTRIAL WASTE WATER DISPOSAL HAS BEEN
 ISSUED BY THE SANITATION DISTRICTS FOR SUCH CONNECTION

THE FOLLOWING LATEST REVISED STANDARD PLANS ON FILE IN THE OFFICE OF THE COUNTY ENGINEER SHALL APPLY IN THE CONSTRUCTION OF THIS PROJECT:

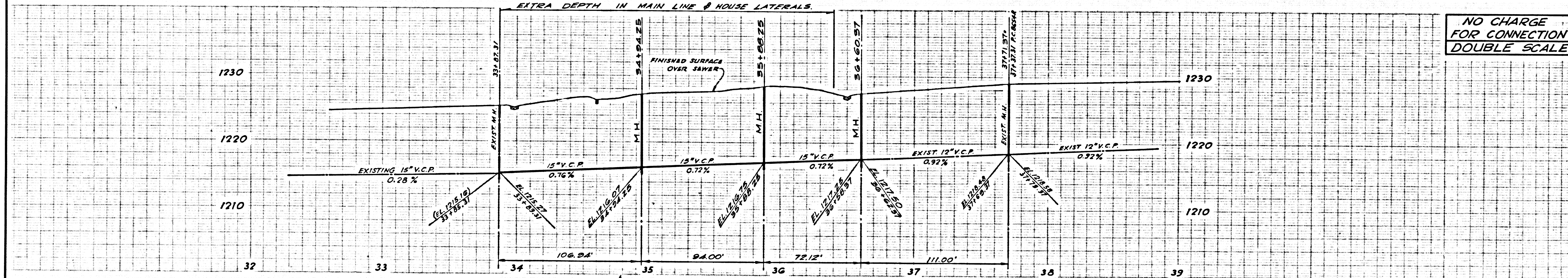
SECTION	63
MINIMUM PUBLIC SAFETY REQUIREMENTS	63
BRICK MANHOLE	63
STANDARD MANHOLE STEP	63
BEDDING FOR SEWER PIPE	63
CRACKING AND REINFORCEMENT	63
WYE OR TEE SUPPORT	63
ALLOWABLE TRENCH WIDTHS	63
LOCKING MANHOLE FRAME AND COVER	63
NON-REINFORCED PRECAST CONCRETE MANHOLE	63

45313

THE FOLLOWING SANITATION DISTRICT STANDARDS APPLY TO THIS PROJECT:
 STD. PRESSURE MANHOLE, FRAME & COVER 5.8-308
 (LOWER TO READ "SEWER")

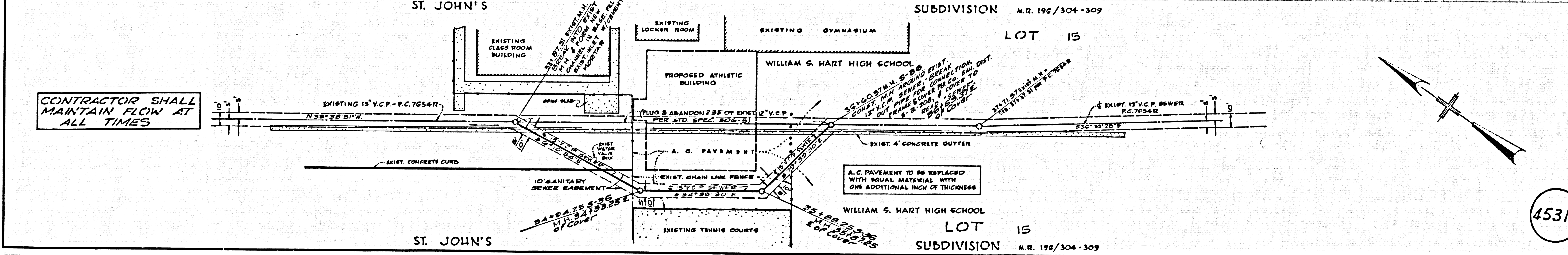
COUNTY OF LOS ANGELES, CALIFORNIA
 HARVEY T. BRANDT, COUNTY ENGINEER JOHN D. PARKURST, CHIEF ENGINEER
 CO. SAN. DIST. NO. 82
 APPROVED *Armando Cal* 3/24/75 APPROVED *J. Hedlund*
 REGIONAL ENGINEER OFFICE ENGINEER
 CHECKED *Ralph J. Link* 3/24/75
 REG. C. E. NO. 14390
 SANTA CLARITA VALLEY BLDG. DIST. B.2. I.N. 0972.49

P.C. 9093 PAGE 2



NO CHARGE
 FOR CONNECTION
 DOUBLE SCALE

CONTRACTOR SHALL
 MAINTAIN FLOW AT
 ALL TIMES



45314