

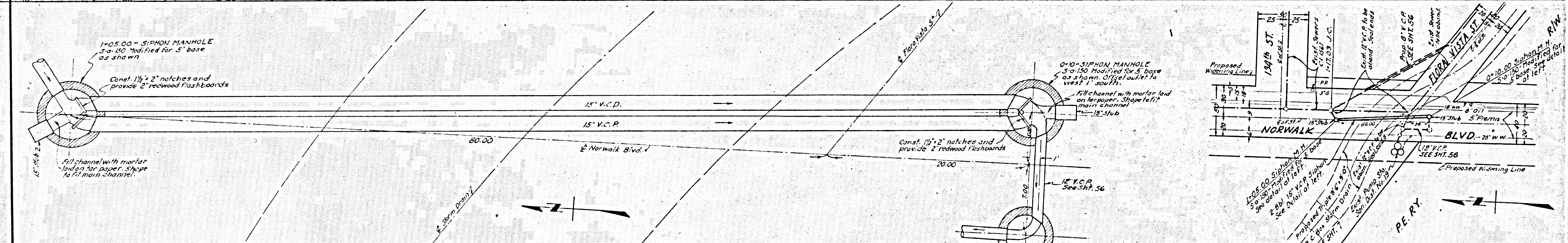
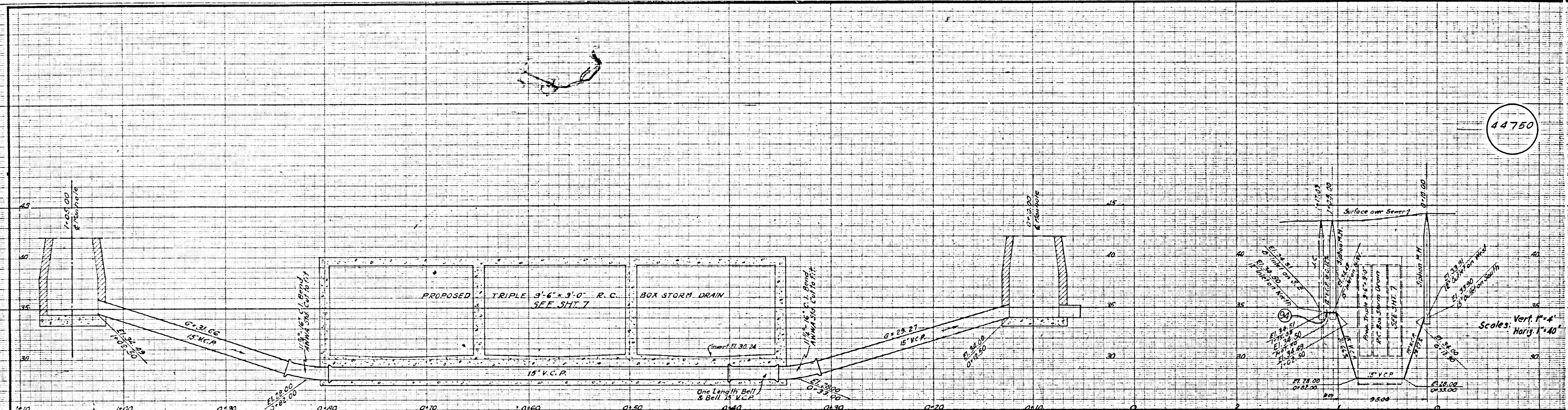
• "V" Connections on North of S3 along Flora Vista St
 "4" = 8" x 4" except as otherwise indicated
 (See Chart Below)

STATION	DESCRIPTION	DEPTH
1+08	Live	7'-8"
1+43	Blind	7'-10"
2+36	Live	6'-0"
2+67	"	7'-10"
2+90	"	7'-10"
3+57	"	7'-2"
4+46	Blind	6'-10"
6+69	Live	6'-0"
6+88	"	6'-0"
7+17	"	5'-8"

REFERENCE ONLY P.C. 9094
 COUNTY STORM DRAIN BOND ISSUE

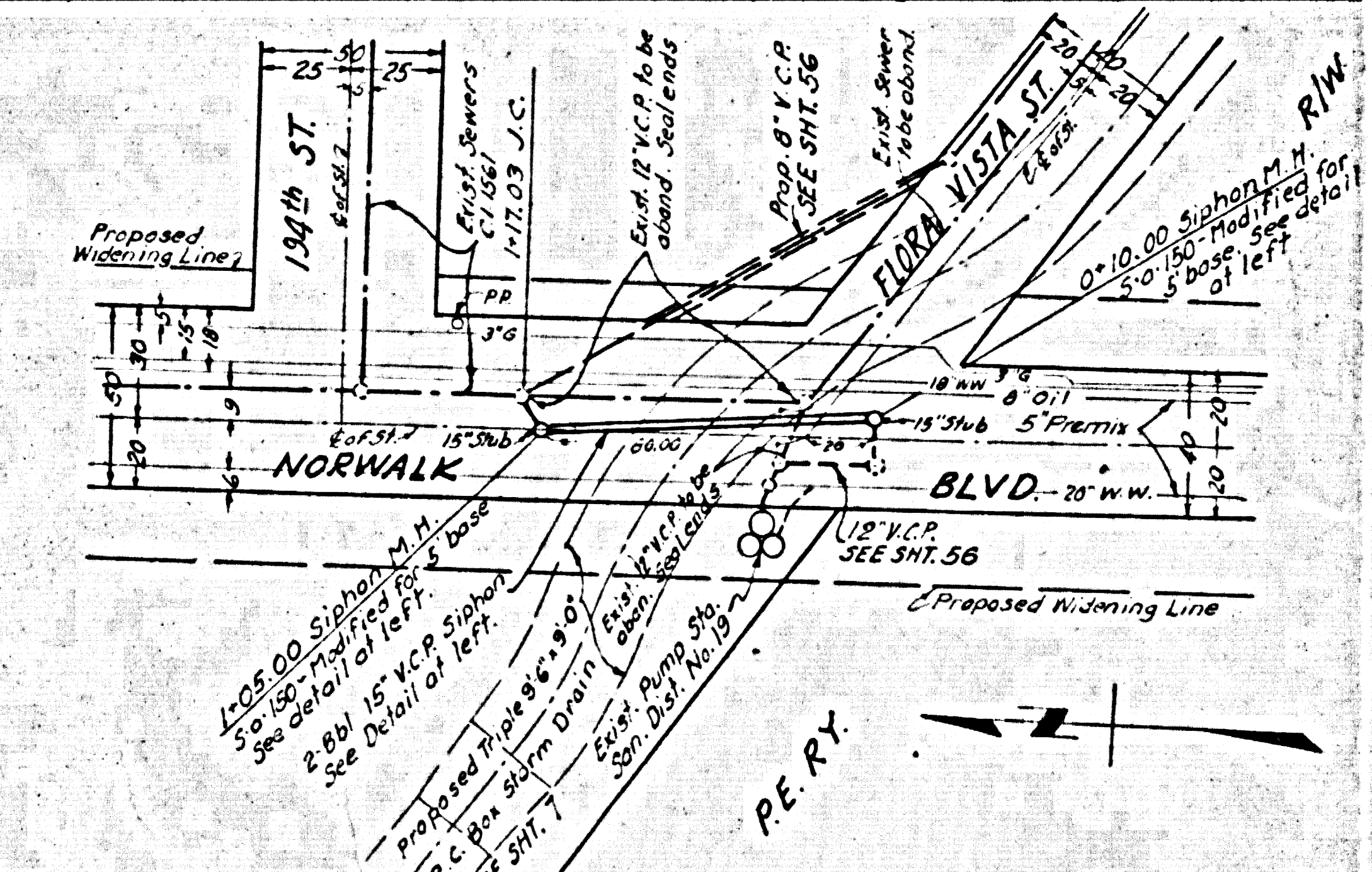
PREPARED BY JOHN A. LAMBIE COUNTY ENGINEER RECOMMENDED BY <i>[Signature]</i> SANITATION ENGINEER	REVISIONS MARK DATE DESCRIPTION • 1-3-63 "As Built"	LOS ANGELES COUNTY FLOOD CONTROL DISTRICT PROJECT NO. 21 ARTESIA - NORWALK UNIT 2 - LINE A SANITARY SEWER RECONSTRUCTION PLAN AND PROFILE
DRAWN BY ALBERTSON CHECKED BY ALBERTSON DATE MARCH 1958	DESIGNED BY ALBERTSON SUBMITTED BY R.A.B. DATE MARCH 1958	APPROVED BY <i>[Signature]</i> CHIEF ENGINEER SCALE AS NOTED DATE OCT 1958 SHEET 56 OF 85

44750



PLAN & PROFILE OF
PROPOSED 2-BARREL SIPHON
NORWALK BLVD. & FLORA VISTA ST.
SCALES: VERT. 1"=4'
HORIZ. 1"=4'

SIPHON No 10



REFERENCE PC.9094
COUNTY STORM DRAIN BOND ISSUE

PREPARED BY JOHN A. LAMBIE COUNTY ENGINEER RECOMMENDED BY <i>E. H. Hughes</i> SANITATION ENGINEER	REVISIONS MARK DATE DESCRIPTION _____ _____ _____	LOS ANGELES COUNTY FLOOD CONTROL DISTRICT PROJECT NO. 21 ARTESIA - NORWALK UNIT 2 - LINE A SANITARY SEWER RECONSTRUCTION SEWER SIPHON PLAN AND PROFILE APPROVED BY <i>M. E. Salmons</i> CHIEF ENGINEER
DRAWN BY WOOD CHECKED BY WOOD TRACED BY WOOD APPROVED BY PROSEER DATE APRIL 1959	DESIGNED BY WOOD CHECKED BY PROSEER SUBMITTED BY PROSEER DATE APRIL 1959	SCALE AS NOTED DATE OCT. 1958 SHEET 57 OF 85