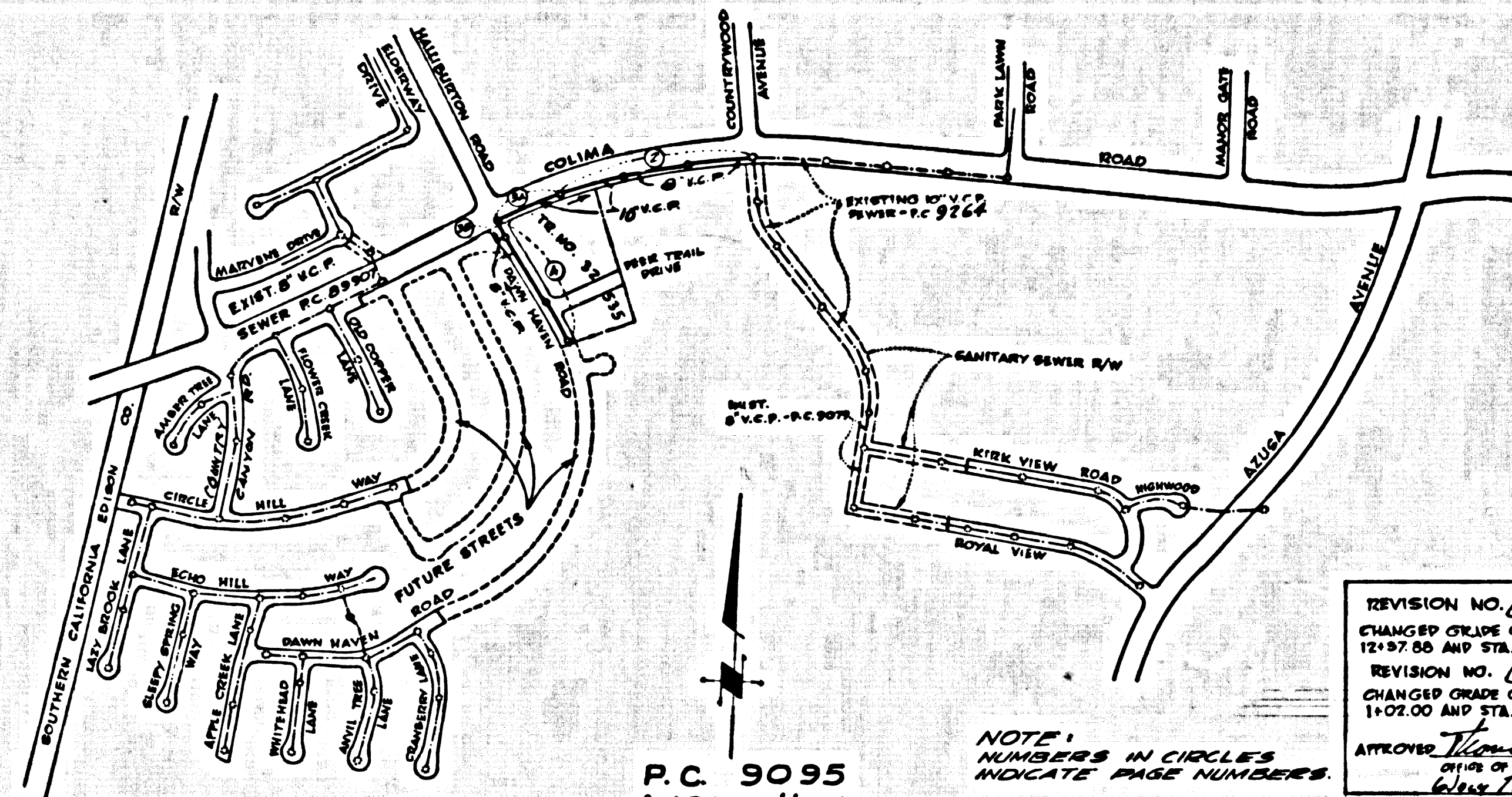


B.M. 563279 ELEV. 456.765

ROAD DEPT. B.M. TAG IN CURB 6' WEST OF CURB END 42' SOUTH & 81' WEST OF INT. OF COLIMA ROAD & AZUCA AVENUE OTTERBEIN QUAD. 1970



P.C. 9095 INDEX MAP SCALE: 1"=500'

NOTE: NUMBERS IN CIRCLES INDICATE PAGE NUMBERS

ISSUE NO HOUSE CONNECTION PERMITS UNTIL P.C. 9095-18 ACCEPTED

REVISION NO. 1 JULY 1, 1974 CHANGED CURVE OF 8" V.C.P. BETWEEN STA. 12+77.50 AND STA. 18+76.50 PAGE 2  
REVISION NO. 2 JULY 1, 1974 CHANGED GRADE OF 8" V.C.P. BETWEEN STA. 11+02.50 AND STA. 14+76.50 PAGE 2  
APPROVED: [Signature] DIVISION OF THE COUNTY ENGINEER 7/1/74

DOUBLE SCALE

PROFILE, ALIGNMENT AND GRADE OF SANITARY SEWERS PAGE 1

CONSTRUCTED IN

TRACT NO. 32535

PRIVATE CONTRACT NO. 9095

W.S. 38-B4

2 SHEETS, 4 PAGES

45568

SCALE: VERT. 1"=4' HORIZ. 1"=40'

NOVEMBER, 1974

PREPARED IN THE OFFICES OF

HOPEN, HEIDLAND & DORBY INC.

3050 W. MAIN STREET ALHAMBRA, CALIF.

REG. C. E. No. 44078

GENERAL NOTES:

- 1. REVISIONS ARE BY PERMITS MADE BY THE COUNTY ENGINEER.
2. NO REVISIONS SHALL BE MADE IN THIS PLAN WITHOUT THE APPROVAL OF THE COUNTY ENGINEER.
3. NO REVISIONS OF THE COUNTY ENGINEER WILL BE MADE ON ANY PORTION OF THE WORK.
4. GRADES TO WHICH THIS IMPROVEMENT IS TO BE CONSTRUCTED ARE SHOWN ON PLANS AND PROFILES. GRADE POINTS FOR TOP OF CURBS, CENTER LINE OF STREETS, OR CENTER LINE OF ALLEYS ARE SHOWN BY CIRCLES ON PROFILES. AT ALL POINTS BETWEEN DESIGNATED POINTS THE GRADE SHALL BE ESTABLISHED SO AS TO CONFORM TO A STRAIGHT LINE BETWEEN SAID DESIGNATED POINTS.
5. THE PRIVATE ENGINEER SHALL FURNISH THE COUNTY ENGINEER WITH GRADE SHEETS AND STATIONINGS FOR ALL HOUSE LATERALS AND "C" OR "T" BRANCHES AND SHALL PROVIDE STAKES FOR THEM AT THEIR PROPER LOCATIONS WITH STATIONINGS PLAINLY MARKED. ALL HOUSE LATERALS SHALL BE CONSTRUCTED IN A STRAIGHT ALIGNMENT AT RIGHT ANGLES FROM THE MAIN LINE SEWER EXCEPT AS SHOWN ON THE PLANS. HOUSE LATERALS FROM CHIMNEYS SHALL NOT HAVE AN ANGLE OF LESS THAN 45° WITH THE MAIN LINE SEWER. ANY CHANGE IN ALIGNMENT SHALL BE REQUESTED IN WRITING BY THE PRIVATE ENGINEER.
6. THE PRIVATE ENGINEER SHALL FURNISH THE HOUSE LATERAL SHEET AT THE PROPERTY LINE BELOW THE TOP OF CURB RELEVATION FOR EACH HOUSE LATERAL ON THE GRADE SHEET.
7. BEFORE WORK CAN BE STARTED, THE CONTRACTOR MUST OBTAIN A PERMIT TO EXCAVATE IN COUNTY STREETS FROM THE L.A. COUNTY ROAD DEPT., DISTRICT OFFICE NO. 7, AND PAY A FEE TO THE COUNTY ENGINEER, 300 E. BROADWAY, 2ND FLOOR, DISTRICT OFFICE, REGIONAL OFFICE, TO COVER THE COST OF CONSTRUCTION INSPECTION AND RECORD PLANS.
8. IF WORK IS TO BE DONE IN A STATE HIGHWAY, A PERMIT MUST BE OBTAINED FROM THE STATE OF CALIFORNIA, DIVISION OF HIGHWAYS, 180 SOUTH SPRING STREET, LOS ANGELES, CALIFORNIA.
9. APPROVAL OF THIS PLAN BY THE COUNTY OF LOS ANGELES DOES NOT CONSTITUTE A REPRESENTATION AS TO THE ACCURACY OF THE LOCATION OF OR THE EXISTENCE OR NON-EXISTENCE OF ANY UNDERGROUND UTILITY PIPE, OR STRUCTURE WITHIN THE LIMITS OF THIS PROJECT. THIS NOTE APPLIES TO ALL PAGES.
10. REFER TO SECTION 7-18.6.1 OF THE STANDARD SPECIFICATIONS, REGARDING SAFETY CARRIAGE.

CONSTRUCTION NOTES:

- 1. WORK SHALL BE CONSTRUCTED ACCORDING TO THE STANDARD SPECIFICATIONS FOR PUBLIC WORKS CONSTRUCTION (1972 EDITION) WITH (L.S.C.) SUPPLEMENT AND COUNTY ENGINEER SPECIAL PROVISIONS FOR THE CONSTRUCTION OF SANITARY SEWERS DATED JANUARY 11, 1974. THIS SHALL BE INDICATED ONLY IN THE PRESENCE OF THE COUNTY ENGINEER.
2. THE CONTRACTOR SHALL NOTIFY THE DIVISION OF TELEPHONE, (213) 874-2888, AT LEAST TWENTY FOUR HOURS BEFORE STARTING ANY WORK UNDER THIS CONTRACT.
3. HOUSE LATERALS TO BE CONSTRUCTED WITH INVERTS AT PROPERTY LINE & PERMITS SHOW CURB GRADE EXCEPT AS NOTED.
4. USE OF THE BRANCHES MAY BE USED FOR CONNECTIONS TO MAINLINE SEWERS EXCEPT AS NOTED.
5. ALL STRUCTURES SHALL BE WITHIN SINK MANHOLES PER 5.2 ON PRECAST CONCRETE MANHOLES PER 5.3, EXCEPT AS NOTED.
6. PROFILE STAKES ON THE PROPERTY LINE OR PROPERTY LINES PRODUCED BY RIGHT ANGLES TO THE SEWER LINE AT THE CENTER LINE OF EACH MANHOLE.
7. MANHOLES TOPS IN UNIMPROVED RIGHTS OF WAY TO BE 6 INCHES ABOVE FINISHED GRADE.
8. INTERFERING CLAY PIPE JOINTS SHALL BE TYPE "C", "D", OR "E" PER STANDARD SPECIFICATIONS SECTION 200.2.
9. IF A POWER POLE IS WITHIN THREE FEET OF THE SEWER, THE SEWER SHALL BE ENCASED PER 5.3, CASE B, TWO FEET ON EACH SIDE FROM THE POINT OF INTERFERENCE.
10. IF DURING THE COURSE OF CONSTRUCTION IT IS DETERMINED THAT THERE IS LESS THAN FOUR FEET OF COVER OVER THE TOP OF A MAIN LINE OR HOUSE LATERAL V.C.P. SEWER WHICH IS NOT INDICATED ON THE PLANS, THE PIPE SHALL BE ENCASED PER 5.3, CASE B, UNLESS OTHERWISE APPROVED BY THE COUNTY ENGINEER.
11. ALL JOINTS BETWEEN CLAY PIPE AND INTERFERING CLAY PIPE SHALL BE MADE WITH A RUBBER SLEEVE JOINT, TYPE "C" OR "D", WITHIN BURNING IF NECESSARY PER STANDARD SPECIFICATIONS, SECTION 200.2.
12. SEWERS TO BE TESTED FOR LEAKAGE PER SECTION 200-1.6 OF THE STANDARD SPECIFICATIONS AND SPECIAL PROVISIONS.
13. REQUIRE ALL TRENCHES WITHIN PAVED AREAS TO MEET L.A. COUNTY ROAD DEPT. OR CALIFORNIA STATE HIGHWAY REQUIREMENTS IN ACCORDANCE WITH PERMITS.
14. FULL COMPLIANCE WITH SECTION 200-1.8 OF THE SPECIAL PROVISIONS WILL BE REQUIRED FOR BACKFILL BY STREET CURBIFICATION OF EXISTING CONNECTIONS AND LAND EQUIVALENTS BY A QUALIFIED, REGISTERED TESTING LABORATORY SHALL BE PROVIDED BY THE PERMITTEE PRIOR TO THE ISSUANCE OF A CERTIFICATE OF PARTIAL ACCEPTANCE.

THE FOLLOWING LATEST REVISED STANDARD PLANS ON FILE IN THE OFFICE OF THE COUNTY ENGINEER SHALL APPLY IN THE CONSTRUCTION OF THIS PROJECT:

Table listing standard plans: SINK MANHOLES PER 5.3, STANDARD MANHOLE DEPTH, CHIMNEY AND ENCASUREMENT, etc.

COUNTY OF LOS ANGELES, CALIFORNIA

HARVEY T. BRANDT, COUNTY ENGINEER JOHN D. PARKHURST, CHIEF ENGINEER

APPROVED: [Signatures]

CHECKED: [Signature]

MR. C.E. NO. 19156

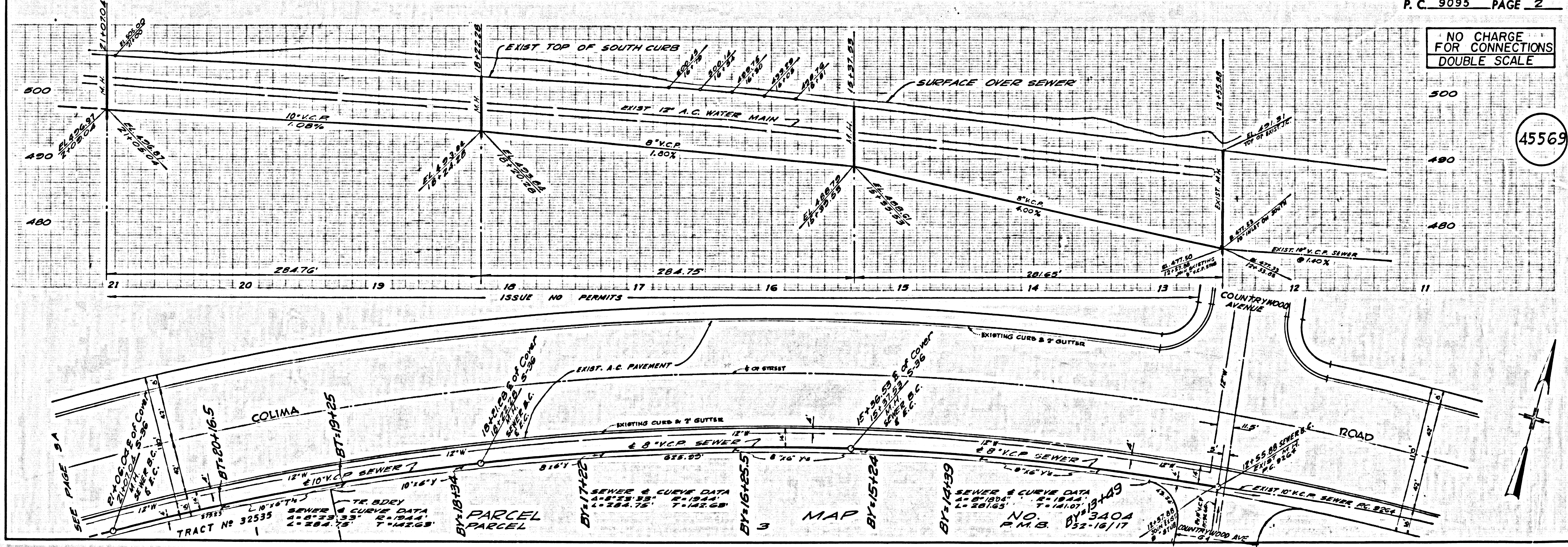
LA PUENTE BLDG. DIST. 2.0

J.N. 0250.02

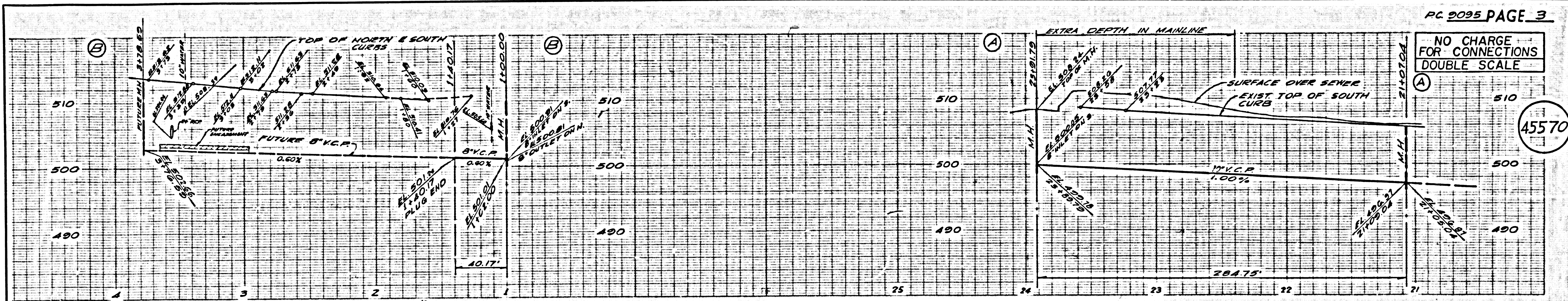
P.C. 9095 PAGE 2

NO CHARGE FOR CONNECTIONS DOUBLE SCALE

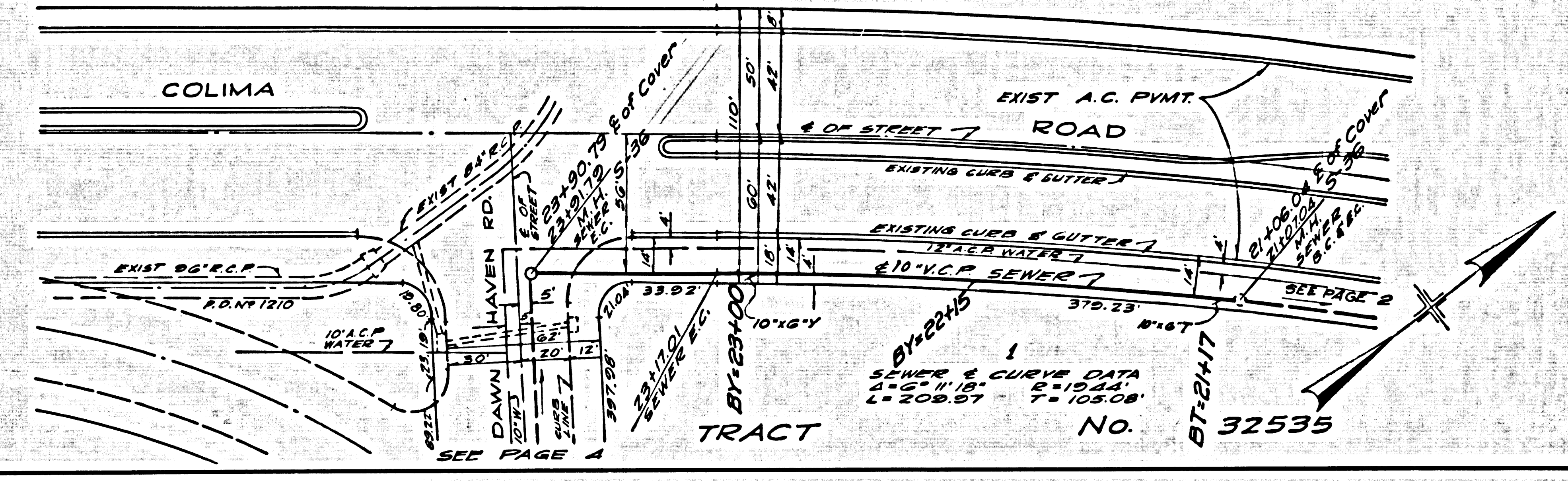
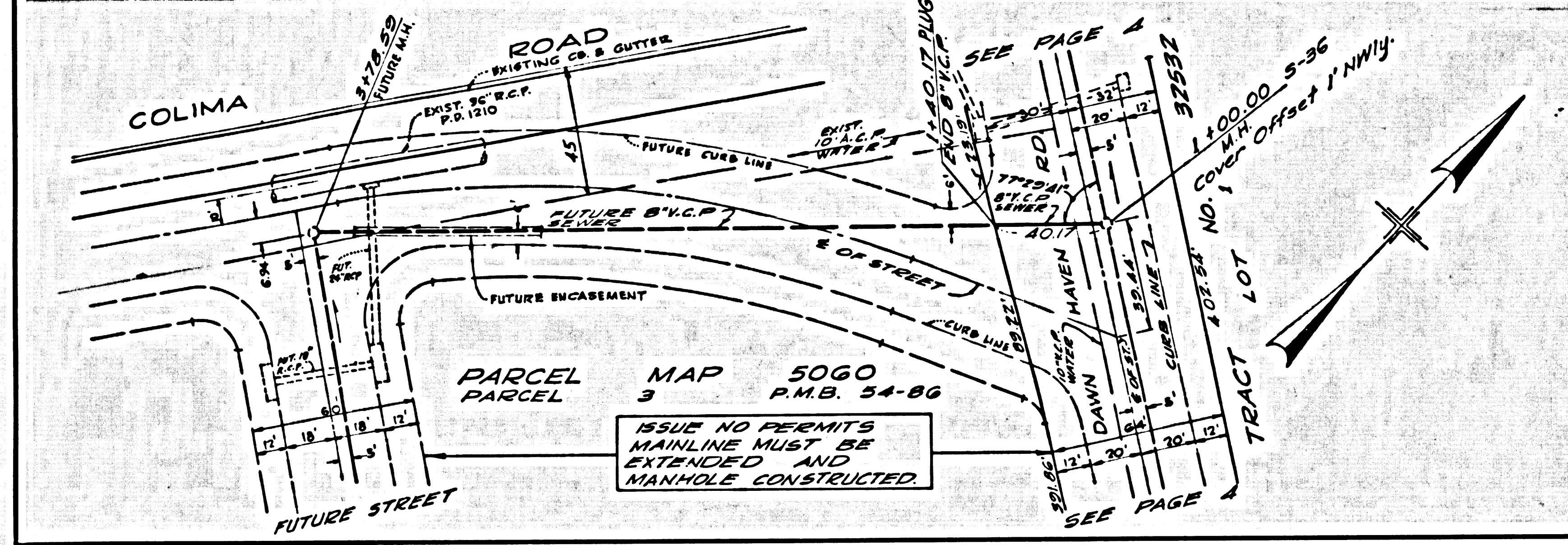
45569



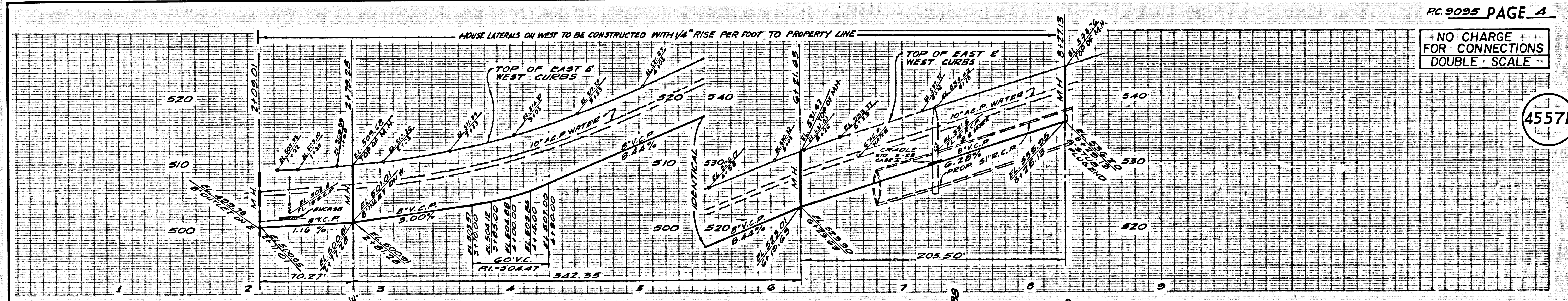
NO CHARGE FOR CONNECTIONS DOUBLE SCALE



45570



NO CHARGE FOR CONNECTIONS DOUBLE SCALE



45571

